

WATER RESOURCES SUMMARY

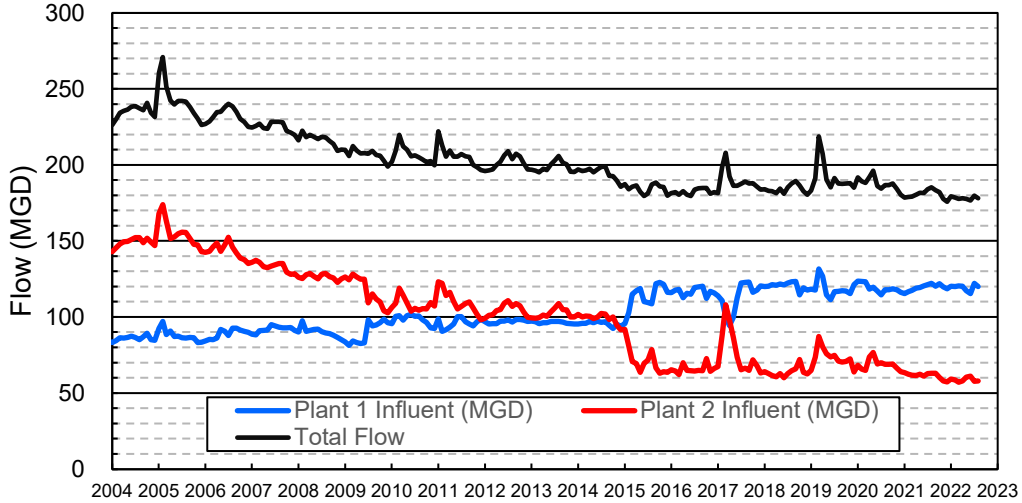
July 2022

INFLOWS & OUTFLOWS (acre-feet)	Total for Month	Year to Date - This Year Last Year	
BASIN SUPPLIES			
Water Purchases from MWD (excludes In Lieu)	0	0	0
Water into MWD Storage Account (excludes In Lieu)	0	0	0
SAR & Santiago Creek Flows (accounts for storage to/from recharge facilities)	5,533	5,533	5,022
GWRS Water to Forebay	5,258	5,258	5,267
GWRS Water to Mid-Basin Injection Wells	676	676	818
GWRS Water to Talbert Barrier	2,249	2,249	2,684
OC-44 and F. Valley Water to Talbert Barrier	0	0	0
Alamitos Barrier Water	210	210	269
Incidental Recharge (estimated)	1,200	1,200	1,000
Evaporation from Recharge Basins	(259)	(259)	(275)
River Flow Lost to Ocean	<u>0</u>	<u>0</u>	<u>0</u>
Total Groundwater Recharge	14,868	14,868	14,786
WATER PRODUCTION			
Groundwater Production	23,688	23,688	24,526
MWD Storage Program Withdrawals	<u>0</u>	<u>0</u>	<u>0</u>
Total Groundwater Production	23,688	23,688	24,526
BASIN BALANCE			
Change in Groundwater Storage	(8,820)	(8,820)	(9,739)
Change in Groundwater Storage excluding MWD Stored Water	(8,820)	(8,820)	(9,739)
Accumulated Overdraft	-----	261,145	257,742
Accumulated Overdraft excluding MWD Storage	-----	261,145	257,742
IN LIEU WATER			
OCWD In Lieu Purchases (MWD Cyclic Storage)	0	0	0
MWD In Lieu Storage	<u>0</u>	<u>0</u>	<u>0</u>
Total In Lieu	0	0	0
OTHER KEY INFORMATION			
1. MWD Water Deliveries to Producers	11,194	11,194	13,025
2. Basin Production Percentage	67.9%	67.9%	65.3%
3. Total Water Demand	36,317	36,317	39,272
4. Total GWRS Production	8,191	8,191	8,778
5. Green Acres Project Water	443	443	476
6. SAR Water Quality			
- Total Dissolved Solids (TDS) of SAR below Prado Dam (ppm)	690	-----	700
- Total Nitrogen of SAR below Prado Dam (ppm)	3.6	-----	3.3
7. Month-End Water Storage Behind Prado Dam	0	-----	25
8. Month-End Water Storage in Recharge Facilities	8,905	-----	8,028
9. Water Storage Change in Recharge Facilities	(1,971)	(1,971)	(632)
10. Total Artificial Recharge	13,668	13,668	13,786
11. Monthly Mean Temperature at Santa Ana Fire Station (°F)	73.8	-----	75.5
12. Rainfall at FHQ (inches)	0.00	0.00	0.08

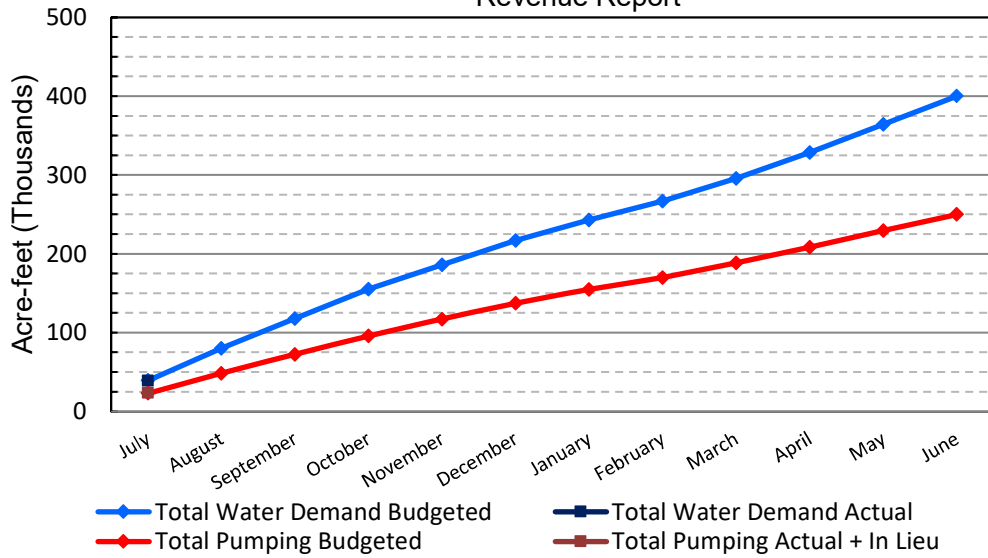
*** Note: Data are preliminary, subject to change

8/11/2022

Orange County Sanitation District Influent Flows Report

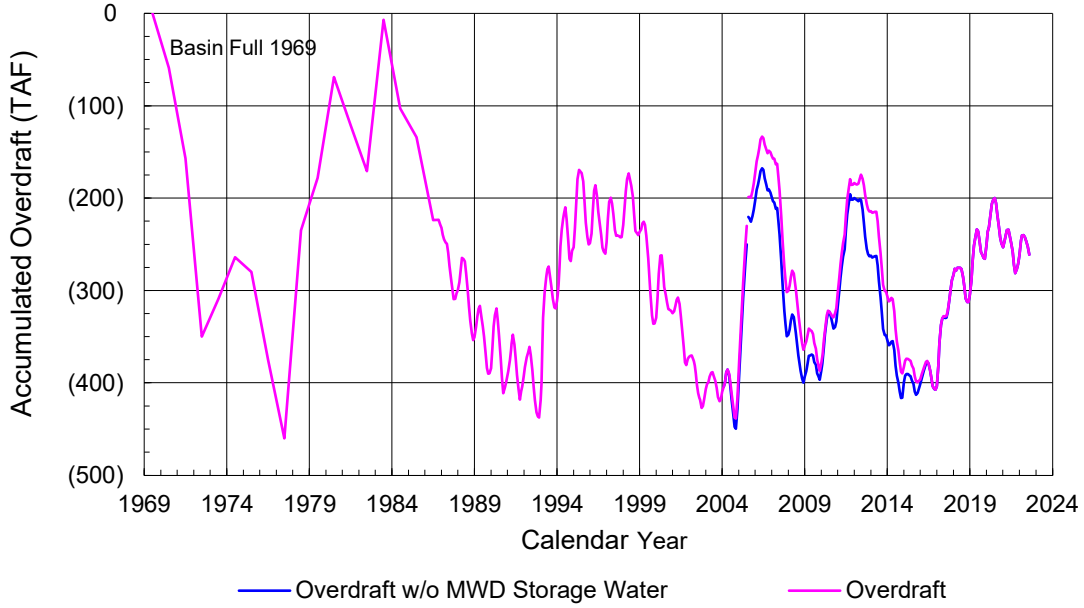


2022-23 Water Demands/Groundwater Pumping + In Lieu/RA Revenue Report

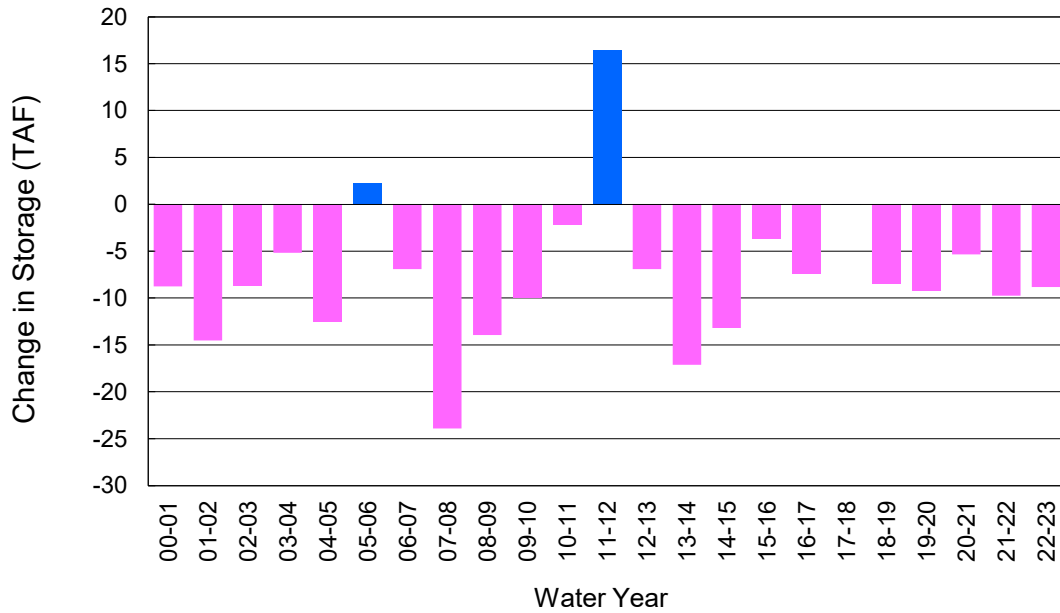


	Monthly		Accumulated Total for the Year			
	Budget	Actual	Budget	Actual	Difference	Percent
Total Water Demand	39,400	36,317	39,400	36,317	-3,083	92.18%
Total Pumping + In Lieu	23,200	23,688	23,200	23,688	488	102.10%
RA Revenue	\$10,718,400	\$10,943,921	\$10,718,400	\$10,943,921	\$225,521	102.10%

Accumulated Overdraft



YTD Change in Groundwater Storage in OCWD



PRODUCERS WATER USAGE SUMMARY

July 2022

(AF except BPP)

WATER AGENCY	Ground-water (1)	In Lieu	Reclaimed Water	Total Import (2)	Total Demand	2022-23	2021-22	YTD	JUL	2022-23	2021-22
						YTD Demand	YTD Demand	% Diff Demand	2022 BPP	YTD BPP	YTD BPP
Anaheim	1,566	0	0	0	1,566	5,091	5,530	92%	30.8%	30.8%	28.6%
Buena Park	1,022	0	0	0	1,022	1,257	1,356	93%	81.4%	81.4%	85.0%
East Orange County	0	0	0	0	0	84	100	84%	0.0%	0.0%	0.2%
Fountain Valley	809	0	171	0	980	980	1,082	91%	100.0%	100.0%	100.0%
Fullerton	1,737	0	0	0	1,737	2,293	2,511	91%	75.7%	75.7%	78.3%
Garden Grove	1,212	0	0	0	1,212	2,070	2,240	92%	58.5%	58.5%	74.8%
Golden State	1,346	0	0	0	1,346	2,147	2,390	90%	62.7%	62.7%	58.5%
West OC System	1,269	-	-	0	1,269	1,272	1,427	89%	na	na	na
East OC System	76	-	-	0	76	875	963	91%	na	na	na
Huntington Beach	1,440	0	0	0	1,440	2,451	2,672	92%	58.8%	58.8%	81.9%
Irvine Ranch	4,362	0	1,019	0	5,380	5,407	5,780	94%	99.4%	99.4%	97.7%
DRWF Clear	2,643	-	-	-	2,643	2,643	2,680	99%	na	na	na
DRWF Color	730	-	-	-	730	730	611	120%	na	na	na
Laguna Beach	0	0	0	0	0	300	330	na	0.0%	0.0%	0.0%
La Palma	165	0	0	0	165	167	179	93%	98.5%	98.5%	100.0%
Mesa Water (MW)	1,549	0	124	0	1,673	1,673	1,777	94%	100.0%	100.0%	100.0%
MW Clear	973	-	-	-	973	973	1,121	87%	na	na	na
MW Amber	577	-	-	-	577	577	527	109%	na	na	na
Newport Beach	1,312	0	77	0	1,389	1,591	1,655	96%	86.7%	86.7%	82.6%
Orange	1,253	0	0	0	1,253	2,470	2,794	88%	50.7%	50.7%	46.4%
OCWD (GAP)	131	0	0	0	131	131	134	98%	100.0%	100.0%	100.0%
Santa Ana	1,902	0	44	0	1,945	3,041	3,250	94%	63.4%	63.4%	81.0%
Seal Beach	0	0	0	0	0	304	354	86%	0.1%	0.1%	0.1%
Serrano	261	0	0	0	261	285	308	92%	91.6%	91.6%	0.0%
Tustin	487	0	0	0	487	1,042	1,101	95%	46.7%	46.7%	47.5%
Westminster	996	0	0	0	996	996	1,083	92%	100.0%	100.0%	100.0%
Yorba Linda	<u>1,646</u>	<u>0</u>	<u>0</u>	<u>0</u>	<u>1,646</u>	<u>2,029</u>	<u>2,115</u>	<u>96%</u>	<u>81.1%</u>	<u>81.1%</u>	<u>0.0%</u>
SUBTOTAL:	23,194	0	1,435	0	24,629	35,809	38,744	92%	67.9%	67.9%	65.3%
Other Producers (Est ~3% of Subtotal)	<u>494</u>	<u>0</u>	<u>0</u>	<u>0</u>	<u>494</u>	<u>508</u>	<u>528</u>	<u>96%</u>			
TOTAL:	23,688	0	1,435	0	25,123	36,317	39,272		67.9%	67.9%	65.3%
OCWD (Talbert Barrier)	0		2,249	0	2,249	2,249	2,684				
OCSA (GAP)	na		27	na	27	27	60				

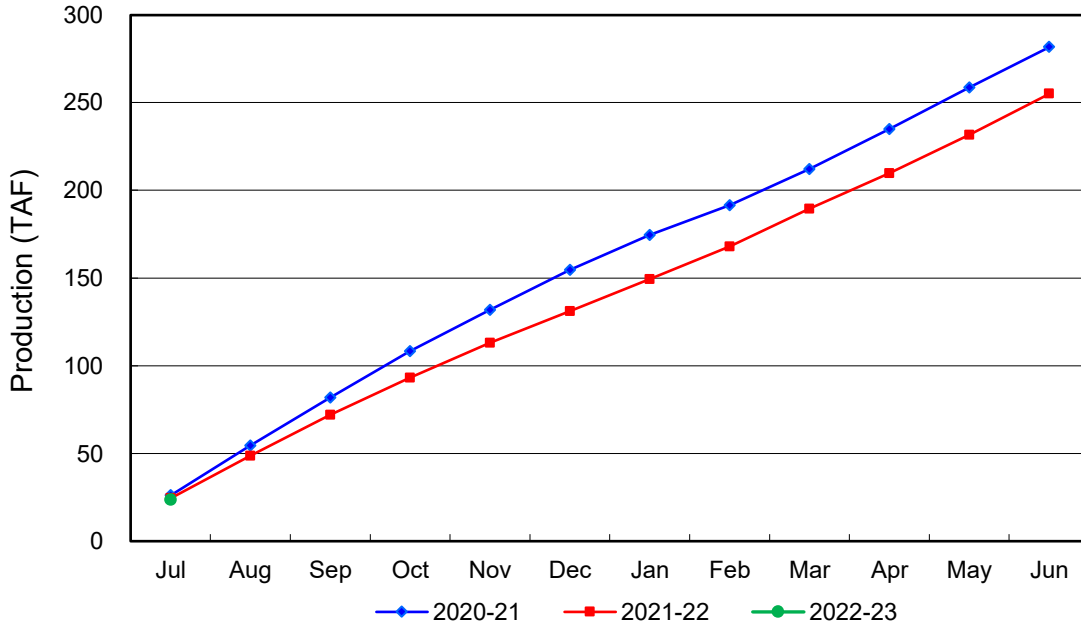
Estimated

(1) Excludes MWD CUP Withdrawals

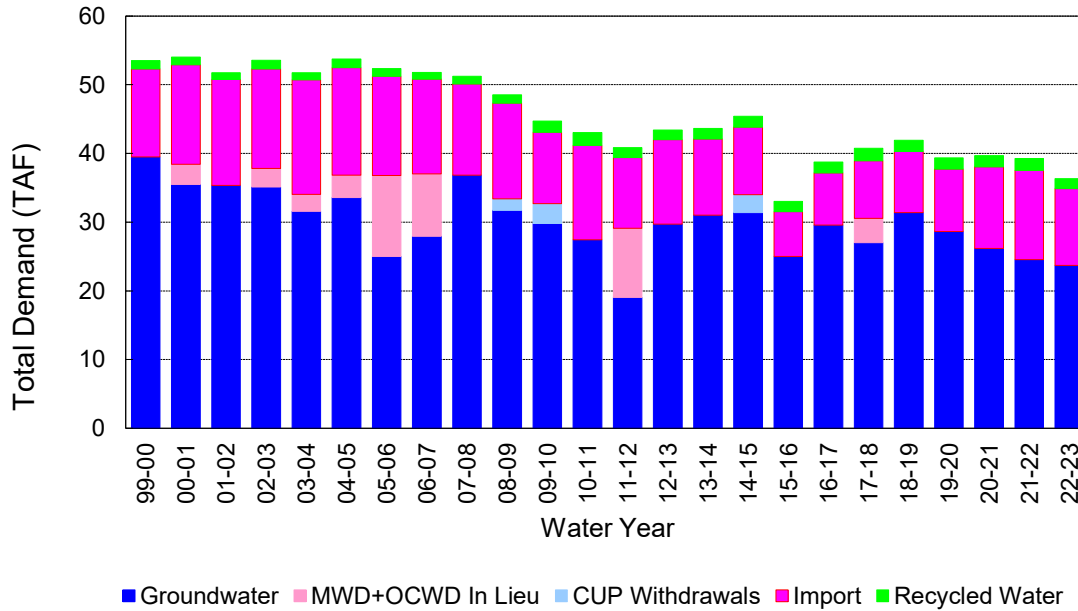
(2) Includes MWD CUP Withdrawals & In Lieu Water

8/11/2022 14:37

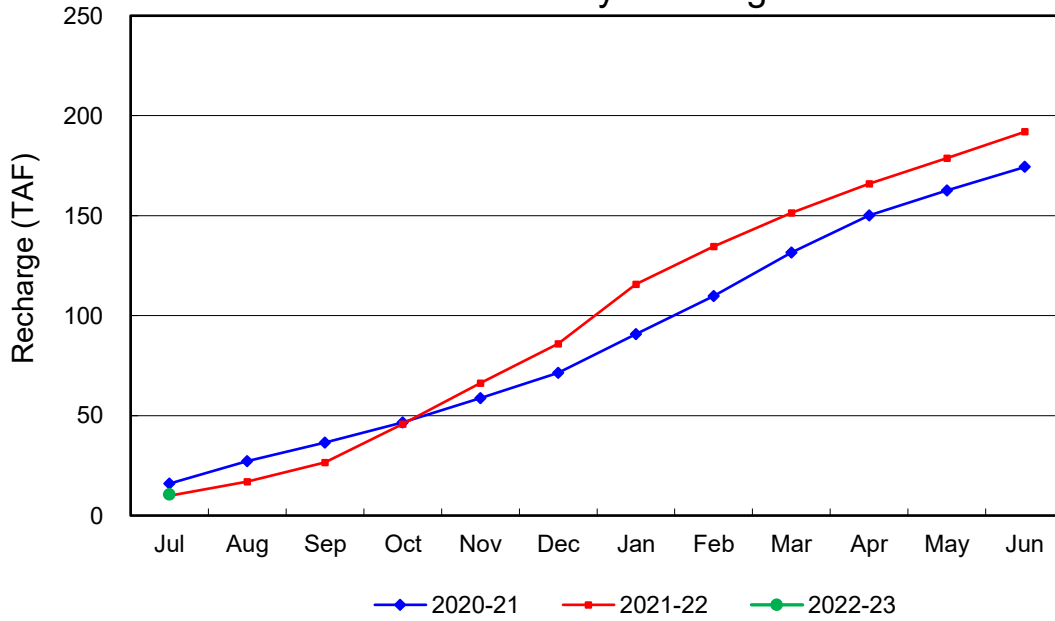
Annual Groundwater Production



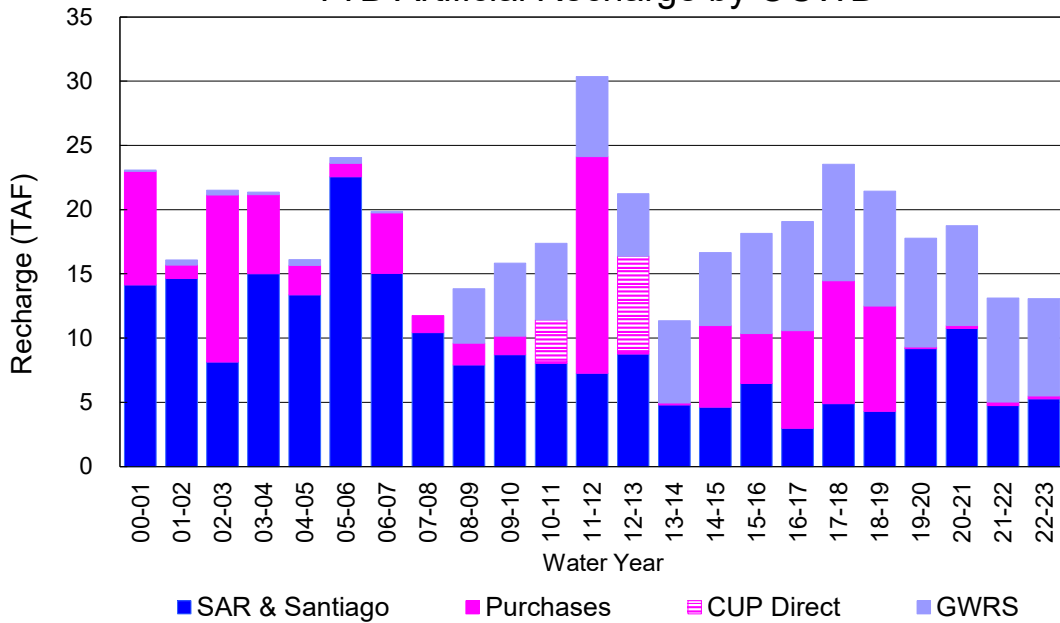
YTD Total Demand in OCWD



Annual Forebay Recharge



YTD Artificial Recharge by OCWD



RECHARGE AREAS REPORT

July 2022

	Percolation (AF)	Remarks
RIVER SYSTEM	2,219	36 cfs per day average perc
DESILTING SYSTEM	na	SAR
OFF-RIVER SYSTEM	46	SAR
WARNER SYSTEM	1,103	SAR
OLIVE BASIN	na	
ANAHEIM LAKE	1,022	Imported Water
MINI-ANA LAKE	0	
MILLER BASIN	74	GWRS
KRAEMER BASIN	0	
LA PALMA BASIN	4,073	GWRS
MIRA LOMA	1,082	GWRS
LA JOLLA BASIN	0	
PLACENTIA BASIN	na	
RAYMOND BASIN	0	
FIVE COVES BASIN	na	
BURRIS BASIN	369	SAR
RIVER VIEW BASIN	0	
FLETCHER BASIN	0	
SANTIAGO BASINS	546	
SANTIAGO CREEK	0	
TOTALS	10,534	
5-YR AVERAGE	14,070	

FLOWS TO RECHARGE AREAS (AF)	
Imperial Headgates (estimated)	3,562
GWRS	5,260
OC-28 (MWD)	0
OC-28a (MWD)	0
OC-59	0
Est'd local Forebay inflow below Imperial	0
Est'd local Santiago inflow (estimated)	0
Irvine lake releases (OC-13 MWD)	0
Villa Park Dam releases (estimated)	0
Precip at Warner Basin (inches)	0.00
Precip direct to open water surfaces	0
TOTAL INFLOW	8,822

LOSSES FROM RECHARGE AREAS (AF)	
Est'd SAR flow past Chapman Ave.	0
Est'd Santiago Cr. flow to SAR	0
Est'd flows past Raymond Basin	0
Calc'd evap (inches) Estimated	7.16
Est'd evaporative losses	259
TOTAL LOSSES	259

STORAGE CHANGES (AF)			
Facility	Begin	End	Net
Deep basins	6,824	5,399	-1,425
Santiago Pits	4,052	3,506	-546
River			
Off-river			
Irvine Lake			
TOTAL	10,876	8,905	-1,971

SUMMARY (AF)	
TOTAL INFLOW	8,822
TOTAL LOSSES	259
STORAGE CHANGE	-1,971
CALC'D PERCOLATION	10,534

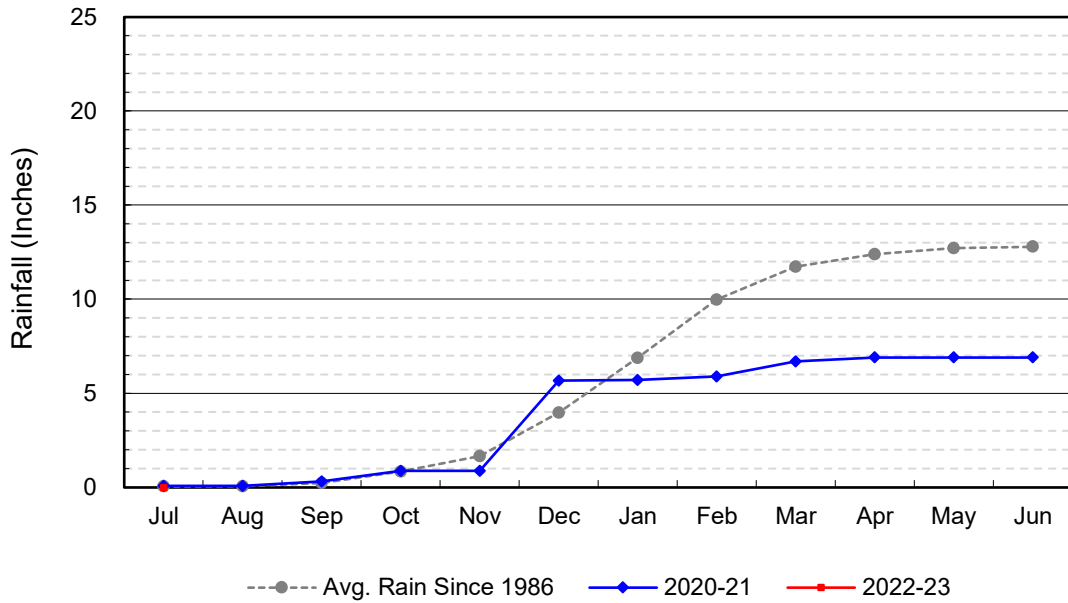
DEEP BASINS MONTHLY STATUS

July 2022

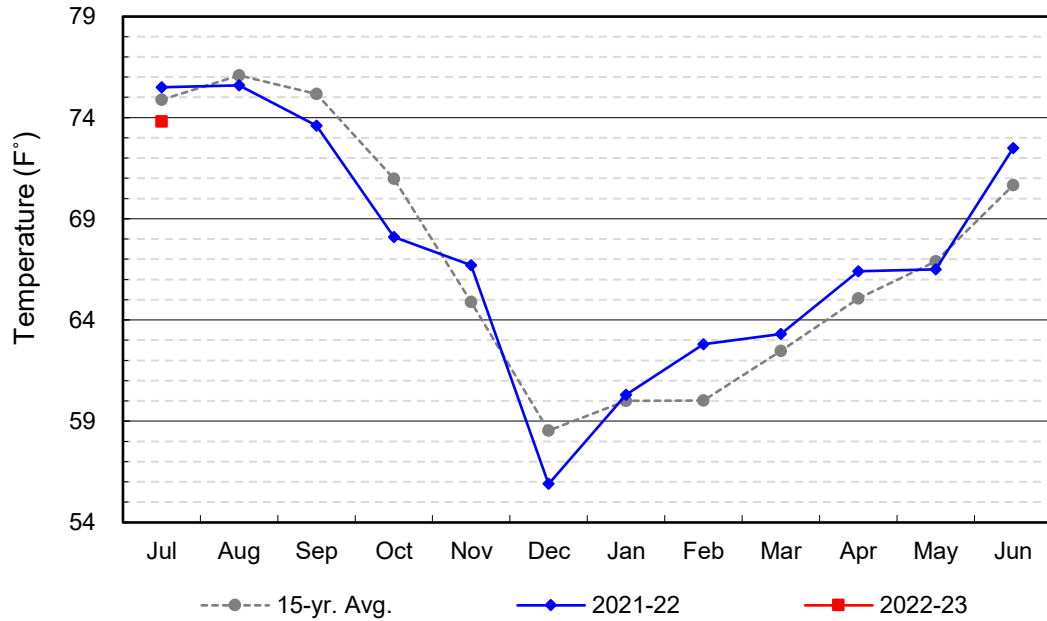
(values in acre-feet)

<i>Facility</i>	<i>Storage Start</i>	<i>Storage End</i>	<i>Maximum Storage</i>	<i>Total Perc</i>	<i>Max Perc</i>	<i>Avg Perc</i>	<i>Avg W.S. Elev</i>
Desilting Ponds	220	220	252	na	na	na	na
Fos-Huckleberry	528	528	628	na	na	na	na
Conrock Basin	546	552	661	na	na	na	na
Warner Basins	2,816	2,748	2,900	1,103	na	na	237
Olive Pit	0	0	95	na	na	na	187
Anaheim Lake	1,022	0	2,300	1,022	125	32	178
Mini-Anaheim Lk	0	0	10	0	0	0	220
Miller Basin	0	0	350	74	17	2	201
Kraemer Basin	0	0	1,055	0	0	0	164
La Palma Basin	53	82	101	4,073	162	131	216
Mira Loma	35	34	53	1,082	37	35	218
La Jolla Basin	0	0	20	0	0	0	199
Placentia Basin	0	0	200	na	na	na	na
Raymond Basin	0	0	200	0	na	na	na
Five Coves Basins	0	0	329	na	na	na	na
Burriss Pit	1,604	1,235	2,500	369	16	12	161
River View Basin	0	0	8	0	0	0	187
Fletcher Basin	0	0	15	0	0	0	184
Santiago (Bond)	3,053	2,709	8,312	546	53	18	215
Santiago (Blu Dia)	999	797	5,259	-	-	-	-
Totals	10,876	8,905	25,247	8,269			
Prado Dam	0	0	20,000				

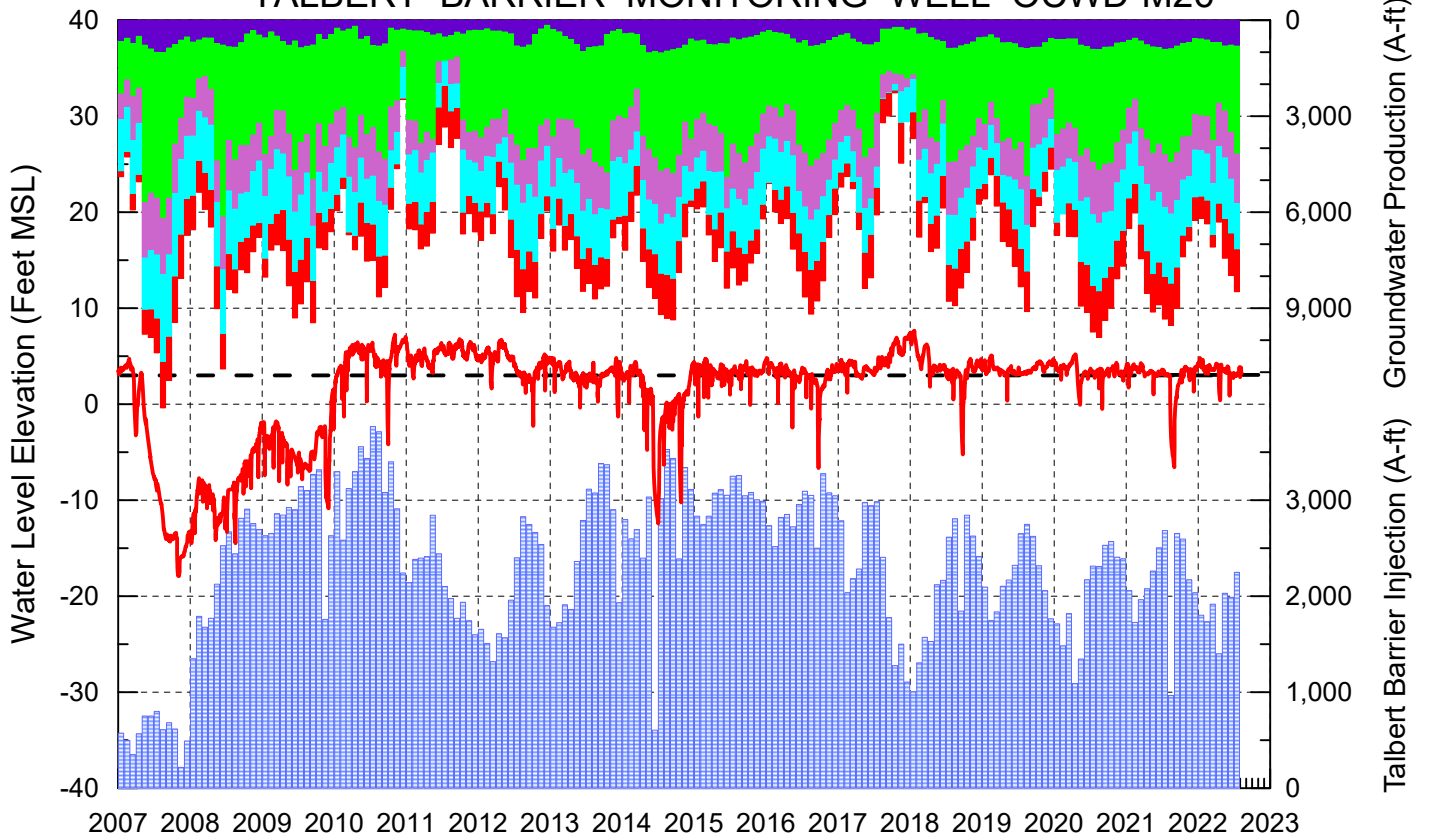
Cumulative Anaheim Field HQ Rainfall




Temperature at Santa Ana Fire Station



TALBERT BARRIER MONITORING WELL OCWD-M26



- | | | | |
|---|---|---|---|
|  | Talbert/Lambda Aquifer Mergence Zone
Perforated Interval: 71 - 135 ft. bgs |  | Fountain Valley Groundwater Production |
|  | Talbert Barrier Injection |  | IRWD Groundwater Production |
|  | Protective Level to Prevent Seawater Intrusion |  | Mesa Water Groundwater Production |
| | |  | Huntington Beach Groundwater Production |
| | |  | Newport Beach Groundwater Production |

