

WATER RESOURCES SUMMARY

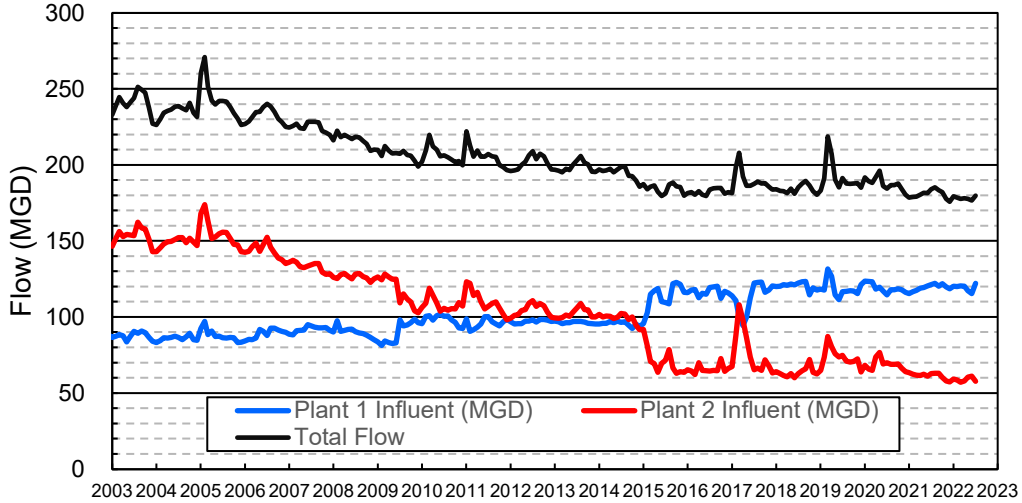
June 2022

| INFLOWS & OUTFLOWS (acre-feet) | Total for Month | Year to Date - This Year Last Year | |
|--|--------------------|--|----------------|
| BASIN SUPPLIES | | | |
| Water Purchases from MWD (excludes In Lieu) | 2,979 | 22,982 | 0 |
| Water into MWD Storage Account (excludes In Lieu) | 0 | 0 | 0 |
| SAR & Santiago Creek Flows (accounts for storage to/from recharge facilities) | 5,169 | 127,168 | 117,452 |
| GWRS Water to Forebay | 5,321 | 60,776 | 61,418 |
| GWRS Water to Mid-Basin Injection Wells | 658 | 7,807 | 10,608 |
| GWRS Water to Talbert Barrier | 1,988 | 23,980 | 27,113 |
| OC-44 and F. Valley Water to Talbert Barrier | 1 | 14 | 17 |
| Alamitos Barrier Water | 206 | 2,681 | 2,618 |
| Incidental Recharge (estimated) | 1,500 | 24,300 | 19,051 |
| Evaporation from Recharge Basins | (256) | (2,567) | (3,266) |
| River Flow Lost to Ocean | <u>0</u> | <u>(16,390)</u> | <u>(1,218)</u> |
| Total Groundwater Recharge | 17,566 | 250,750 | 233,793 |
| WATER PRODUCTION | | | |
| Groundwater Production | 23,397 | 255,096 | 281,793 |
| MWD Storage Program Withdrawals | <u>0</u> | <u>0</u> | <u>0</u> |
| Total Groundwater Production | 23,397 | 255,096 | 281,793 |
| BASIN BALANCE | | | |
| Change in Groundwater Storage | (5,831) | (4,346) | (48,000) |
| Change in Groundwater Storage excluding MWD Stored Water | (5,831) | (4,346) | (48,000) |
| Accumulated Overdraft | ----- | 252,348 | 248,002 |
| Accumulated Overdraft excluding MWD Storage | ----- | 252,348 | 248,002 |
| IN LIEU WATER | | | |
| OCWD In Lieu Purchases (MWD Cyclic Storage) | 0 | 0 | 0 |
| MWD In Lieu Storage | <u>0</u> | <u>0</u> | <u>0</u> |
| Total In Lieu | 0 | 0 | 0 |
| OTHER KEY INFORMATION | | | |
| 1. MWD Water Deliveries to Producers | 9,655 | 117,410 | 102,513 |
| 2. Basin Production Percentage | 70.8% | 68.5% | 73.3% |
| 3. Total Water Demand | 34,566 | 391,011 | 402,642 |
| 4. Total GWRS Production | 7,974 | 92,699 | 99,200 |
| 5. Green Acres Project Water | 463 | 3,827 | 4,315 |
| 6. SAR Water Quality | | | |
| - Total Dissolved Solids (TDS) of SAR below Prado Dam (ppm) | 646 | ----- | 680 |
| - Total Nitrogen of SAR below Prado Dam (ppm) | 3.9 | ----- | 3.4 |
| 7. Month-End Water Storage Behind Prado Dam | 0 | ----- | 1 |
| 8. Month-End Water Storage in Recharge Facilities | 10,876 | ----- | 8,660 |
| 9. Water Storage Change in Recharge Facilities | (202) | 2,216 | (7,079) |
| 10. Total Artificial Recharge | 16,066 | 226,450 | 214,740 |
| 11. Monthly Mean Temperature at Santa Ana Fire Station (°F) | 72.5 | ----- | 70.6 |
| 12. Rainfall at FHQ (inches) | 0.00 | 6.91 | 5.75 |

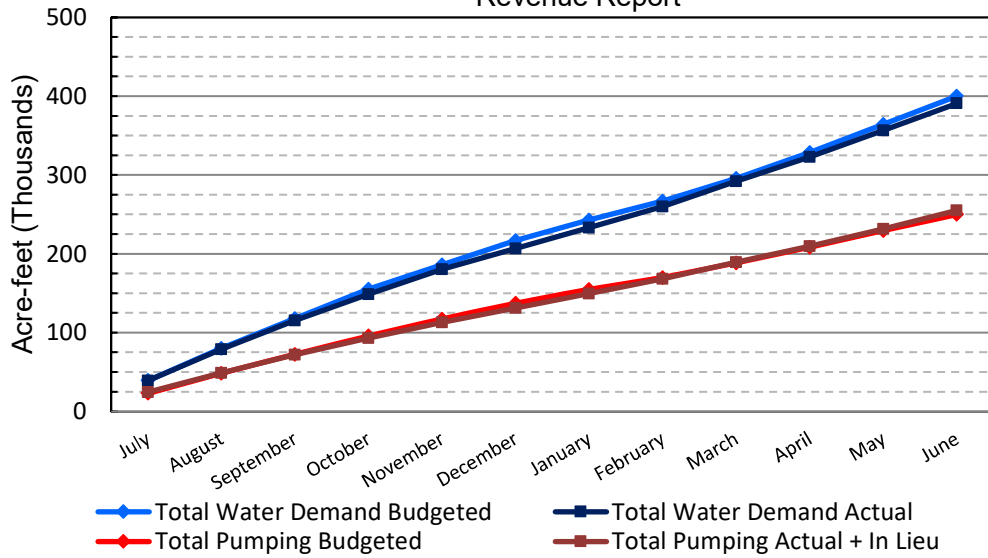
*** Note: Data are preliminary, subject to change

7/14/2022

Orange County Sanitation District Influent Flows Report

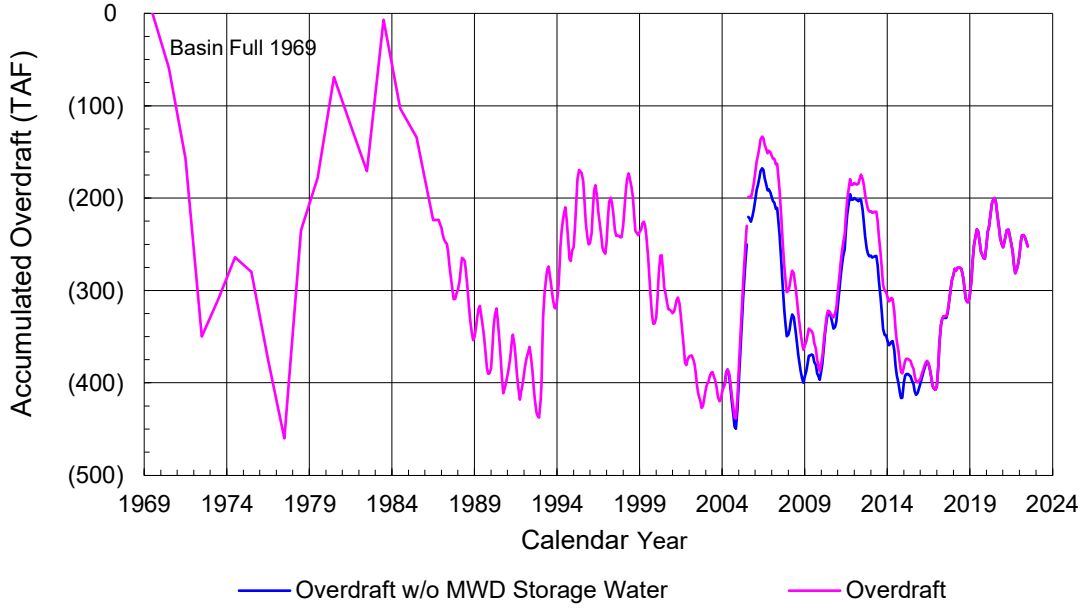


2021-22 Water Demands/Groundwater Pumping + In Lieu/RA Revenue Report

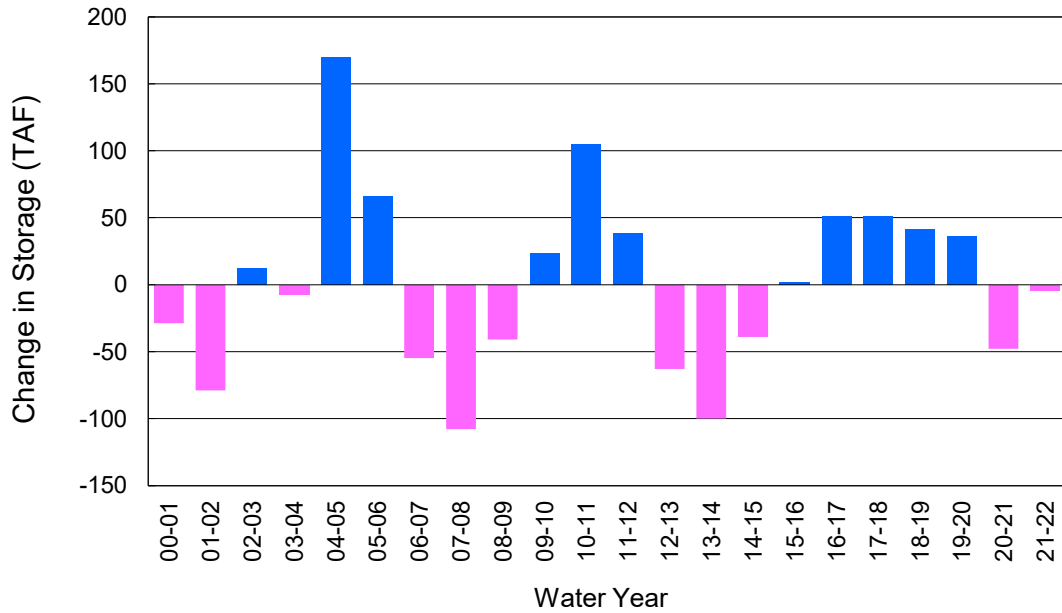


| | Monthly | | Accumulated Total for the Year | | | |
|-------------------------|-------------|--------------|--------------------------------|---------------|-------------|---------|
| | Budget | Actual | Budget | Actual | Difference | Percent |
| Total Water Demand | 35,800 | 34,566 | 400,000 | 391,011 | -8,989 | 97.75% |
| Total Pumping + In Lieu | 20,400 | 23,397 | 250,000 | 255,096 | 5,096 | 102.04% |
| RA Revenue | \$9,424,800 | \$10,809,401 | \$115,500,000 | \$117,854,267 | \$2,354,267 | 102.04% |

Accumulated Overdraft



YTD Change in Groundwater Storage in OCWD



PRODUCERS WATER USAGE SUMMARY

June 2022

(AF except BPP)

| WATER AGENCY | Ground-water (1) | In Lieu | Reclaimed Water | Total Import (2) | Total Demand | 2021-22 YTD Demand | 2020-21 YTD Demand | YTD % Diff Demand | JUN 2022 BPP | 2021-22 YTD BPP | 2020-21 YTD BPP |
|--|------------------|----------|-----------------|------------------|---------------|--------------------|--------------------|-------------------|--------------|-----------------|-----------------|
| Anaheim | 1,440 | 0 | 0 | 3,498 | 4,938 | 59,255 | 57,493 | 103% | 29.2% | 29.0% | 27.0% |
| Buena Park | 981 | 0 | 0 | 212 | 1,193 | 13,186 | 13,325 | 99% | 82.2% | 87.5% | 88.9% |
| East Orange County | 0 | 0 | 0 | 79 | 80 | 906 | 983 | 92% | 0.1% | 0.3% | 7.2% |
| Fountain Valley | 776 | 0 | 174 | 0 | 950 | 10,213 | 10,546 | 97% | 100.0% | 100.0% | 100.0% |
| Fullerton | 1,597 | 0 | 0 | 544 | 2,140 | 23,733 | 24,562 | 97% | 74.6% | 74.7% | 71.8% |
| Garden Grove | 1,472 | 0 | 0 | 515 | 1,987 | 22,105 | 23,164 | 95% | 74.1% | 76.0% | 77.0% |
| Golden State | 1,304 | 0 | 0 | 740 | 2,044 | 23,190 | 24,276 | 96% | 63.8% | 63.3% | 69.8% |
| West OC System | 1,226 | - | - | 2 | 1,228 | 14,056 | 14,648 | 96% | na | na | na |
| East OC System | 78 | - | - | 738 | 817 | 9,133 | 9,629 | 95% | na | na | na |
| Huntington Beach | 1,711 | 0 | 0 | 606 | 2,317 | 26,013 | 27,650 | 94% | 73.8% | 82.0% | 85.9% |
| Irvine Ranch | 3,867 | 0 | 1,098 | 61 | 5,026 | 61,006 | 62,527 | 98% | 98.4% | 98.6% | 99.4% |
| DRWF Clear | 2,013 | - | - | - | 2,013 | 26,452 | 28,243 | 94% | na | na | na |
| DRWF Color | 715 | - | - | - | 715 | 6,492 | 8,266 | 79% | na | na | na |
| Laguna Beach | 0 | 0 | 0 | 300 | 300 | 3,354 | 3,594 | na | 0.0% | 0.0% | 15.3% |
| La Palma | 163 | 0 | 0 | 0 | 163 | 1,767 | 1,990 | 89% | 100.0% | 96.5% | 100.0% |
| Mesa Water (MW) | 1,462 | 0 | 125 | 0 | 1,587 | 17,501 | 17,639 | 99% | 100.0% | 98.7% | 99.6% |
| MW Clear | 896 | - | - | - | 896 | 12,560 | 12,673 | 99% | na | na | na |
| MW Amber | 567 | - | - | - | 567 | 3,766 | 3,878 | 97% | na | na | na |
| Newport Beach | 1,290 | 0 | 74 | 0 | 1,364 | 14,662 | 15,583 | 94% | 100.0% | 73.6% | 95.5% |
| Orange | 1,095 | 0 | 0 | 1,578 | 2,673 | 26,275 | 27,893 | 94% | 41.0% | 52.8% | 75.2% |
| OCWD (GAP) | 149 | 0 | 0 | 0 | 149 | 1,575 | 1,606 | 98% | 100.0% | 100.0% | 100.0% |
| Santa Ana | 2,209 | 0 | 44 | 621 | 2,874 | 33,198 | 34,157 | 97% | 78.0% | 76.8% | 77.1% |
| Seal Beach | 268 | 0 | 0 | 26 | 294 | 3,347 | 3,443 | 97% | 91.2% | 81.7% | 68.0% |
| Serrano | 234 | 0 | 0 | 19 | 253 | 2,820 | 2,836 | 99% | 92.6% | 33.5% | 0.2% |
| Tustin | 496 | 0 | 0 | 494 | 990 | 10,926 | 11,256 | 97% | 50.1% | 55.5% | 80.1% |
| Westminster | 920 | 0 | 0 | 1 | 920 | 10,811 | 10,993 | 98% | 99.9% | 100.0% | 100.0% |
| Yorba Linda | <u>1,476</u> | <u>0</u> | <u>0</u> | <u>347</u> | <u>1,823</u> | <u>19,697</u> | <u>20,380</u> | <u>97%</u> | <u>81.0%</u> | <u>35.2%</u> | <u>52.8%</u> |
| SUBTOTAL: | 22,909 | 0 | 1,515 | 9,642 | 34,066 | 385,542 | 395,899 | 97% | 70.8% | 68.5% | 73.3% |
| Other Producers (Est ~3% of Subtotal) | <u>488</u> | <u>0</u> | <u>0</u> | <u>12</u> | <u>500</u> | <u>5,468</u> | <u>6,743</u> | <u>81%</u> | | | |
| TOTAL: | 23,397 | 0 | 1,515 | 9,655 | 34,566 | 391,011 | 402,642 | | 70.8% | 68.5% | 73.3% |
| OCWD (Talbert Barrier) | 0 | | 1,988 | 0 | 1,988 | 23,994 | 27,130 | | | | |
| OCSA (GAP) | na | | 46 | na | 46 | 590 | 1,045 | | | | |

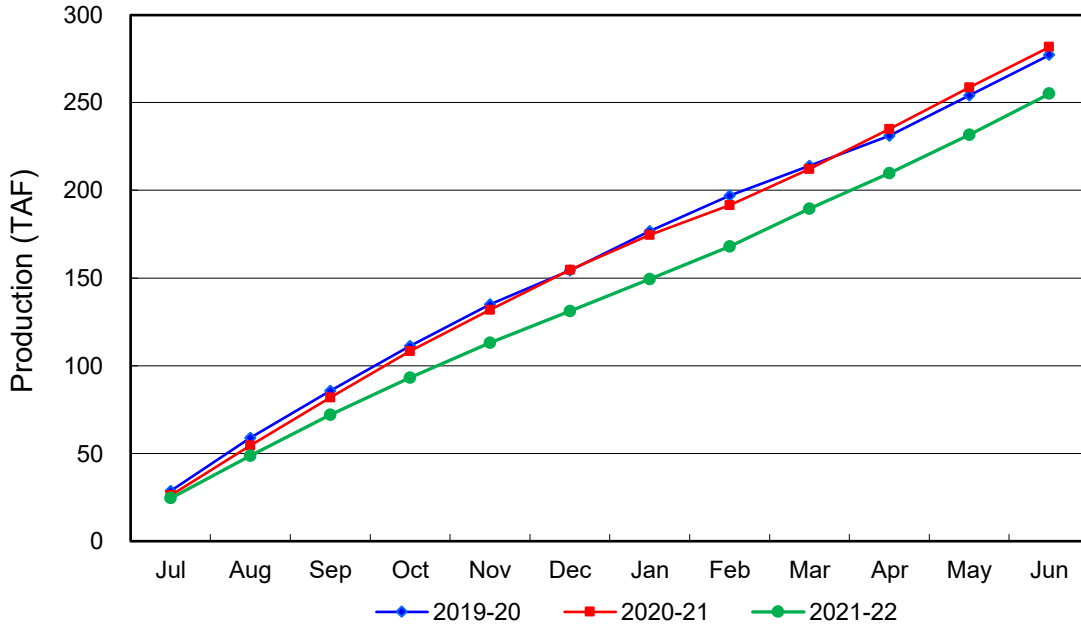
Estimated

(1) Excludes MWD CUP Withdrawals

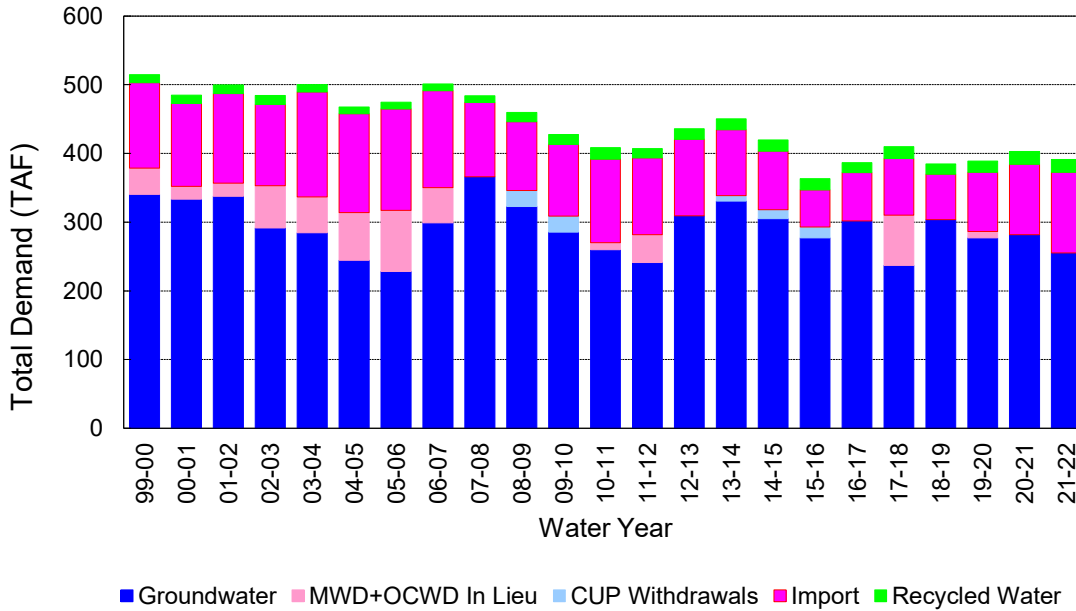
(2) Includes MWD CUP Withdrawals & In Lieu Water

7/14/2022 15:03

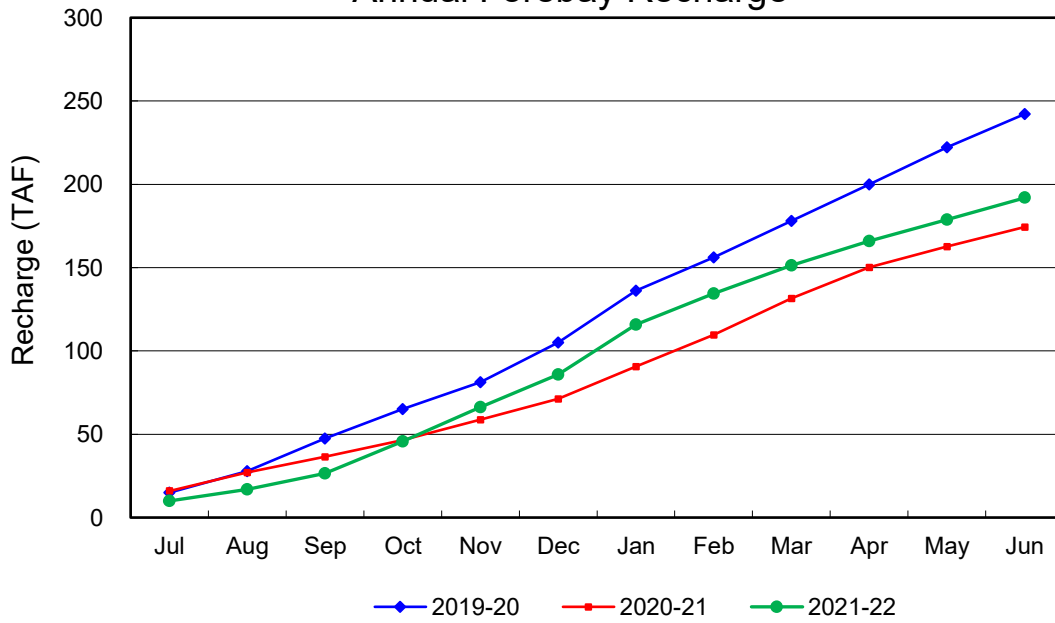
Annual Groundwater Production



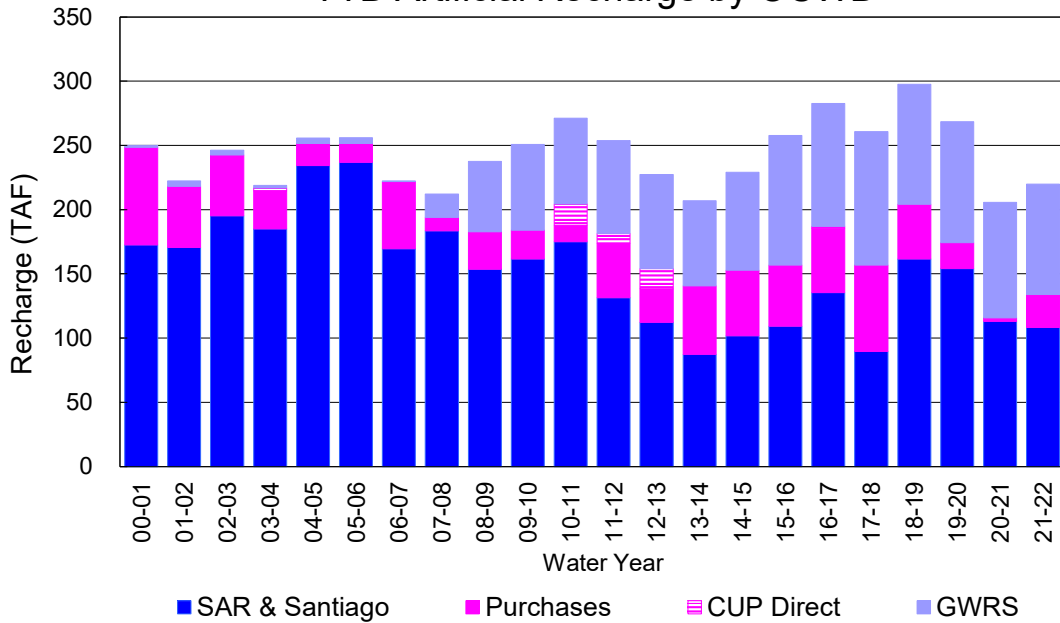
YTD Total Demand in OCWD



Annual Forebay Recharge



YTD Artificial Recharge by OCWD



RECHARGE AREAS REPORT

June 2022

| | Percolation (AF) | Remarks |
|---------------------|------------------|-----------------------------|
| RIVER SYSTEM | 3,529 | 59 cfs per day average perc |
| DESILTING SYSTEM | na | SAR |
| OFF-RIVER SYSTEM | 8 | Passive System |
| WARNER SYSTEM | 964 | SAR |
| OLIVE BASIN | na | |
| ANAHEIM LAKE | 1,963 | Imported Water |
| MINI-ANA LAKE | 0 | |
| MILLER BASIN | 0 | |
| KRAEMER BASIN | 0 | |
| LA PALMA BASIN | 4,122 | GWRS |
| MIRA LOMA | 1,182 | GWRS |
| LA JOLLA BASIN | 0 | |
| PLACENTIA BASIN | na | |
| RAYMOND BASIN | 0 | |
| FIVE COVES BASIN | na | |
| BURRIS BASIN | 652 | SAR |
| RIVER VIEW BASIN | 0 | |
| FLETCHER BASIN | 0 | |
| SANTIAGO BASINS | 795 | |
| SANTIAGO CREEK | 0 | |
| TOTALS | 13,215 | |
| 5-YR AVERAGE | 17,078 | |

| FLOWS TO RECHARGE AREAS (AF) | |
|---|---------------|
| Imperial Headgates (estimated) | 4,967 |
| GWRS | 5,323 |
| OC-28 (MWD) | 2,979 |
| OC-28a (MWD) | 0 |
| OC-59 | 0 |
| Est'd local Forebay inflow below Imperial | 0 |
| Est'd local Santiago inflow (estimated) | 0 |
| Irvine lake releases (OC-13 MWD) | 0 |
| Villa Park Dam releases (estimated) | 0 |
| Precip at Warner Basin (inches) | 0.00 |
| Precip direct to open water surfaces | 0 |
| TOTAL INFLOW | 13,269 |

| LOSSES FROM RECHARGE AREAS (AF) | |
|----------------------------------|------------|
| Est'd SAR flow past Chapman Ave. | 0 |
| Est'd Santiago Cr. flow to SAR | 0 |
| Est'd flows past Raymond Basin | 0 |
| Calc'd evap (inches) Estimated | 6.27 |
| Est'd evaporative losses | 256 |
| TOTAL LOSSES | 256 |

| STORAGE CHANGES (AF) | | | |
|----------------------|---------------|---------------|-------------|
| Facility | Begin | End | Net |
| Deep basins | 6,238 | 6,824 | 586 |
| Santiago Pits | 4,840 | 4,052 | -788 |
| River | | | |
| Off-river | | | |
| Irvine Lake | | | |
| TOTAL | 11,078 | 10,876 | -202 |

| SUMMARY (AF) | |
|--------------------|--------|
| TOTAL INFLOW | 13,269 |
| TOTAL LOSSES | 256 |
| STORAGE CHANGE | -202 |
| CALC'D PERCOLATION | 13,215 |

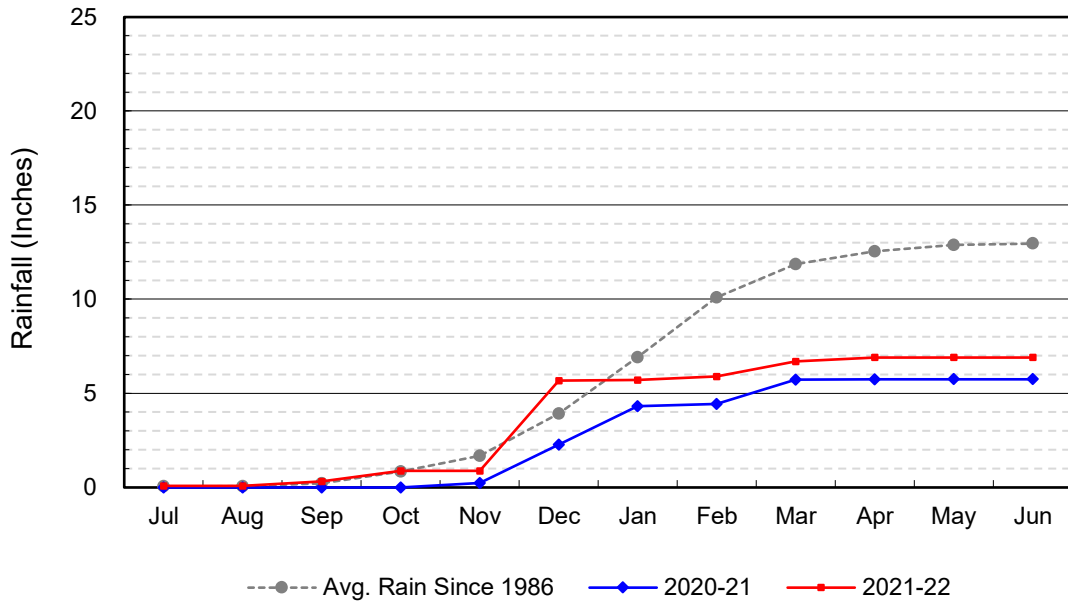
DEEP BASINS MONTHLY STATUS

June 2022

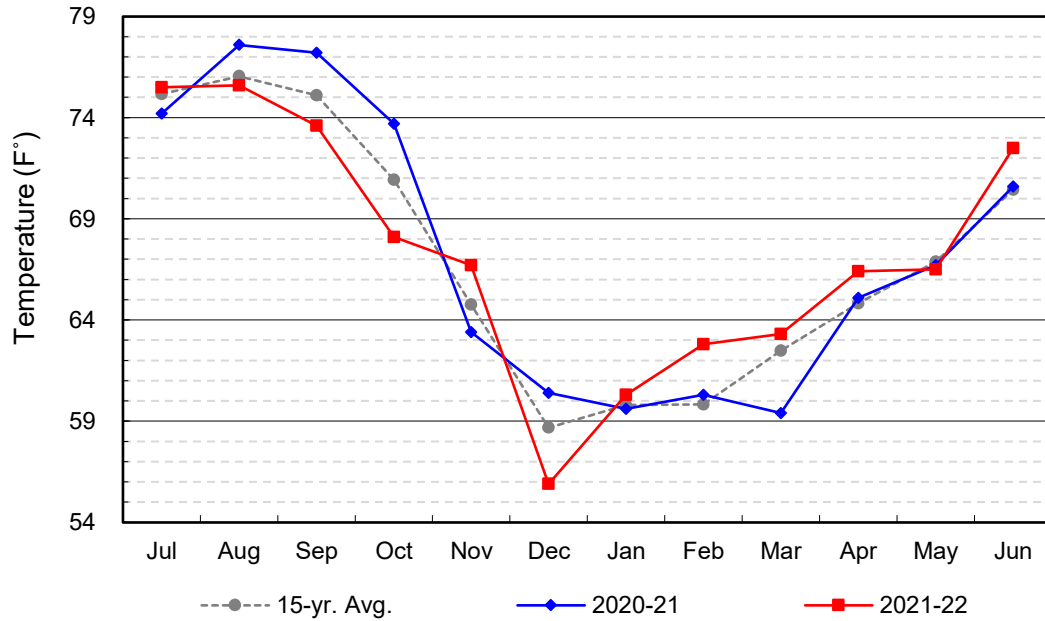
(values in acre-feet)

| <i>Facility</i> | <i>Storage Start</i> | <i>Storage End</i> | <i>Maximum Storage</i> | <i>Total Perc</i> | <i>Max Perc</i> | <i>Avg Perc</i> | <i>Avg W.S. Elev</i> |
|--------------------|--------------------------|------------------------|----------------------------|-----------------------|---------------------|---------------------|--------------------------|
| Desilting Ponds | 230 | 220 | 252 | na | na | na | na |
| Fos-Huckleberry | 533 | 528 | 628 | na | na | na | na |
| Conrock Basin | 554 | 546 | 661 | na | na | na | na |
| Warner Basins | 2,903 | 2,816 | 2,900 | 964 | na | na | 238 |
| Olive Pit | 8 | 0 | 95 | na | na | na | 193 |
| Anaheim Lake | 0 | 1,022 | 2,300 | 1,963 | 150 | 65 | 181 |
| Mini-Anaheim Lk | 0 | 0 | 10 | 0 | 0 | 0 | 220 |
| Miller Basin | 0 | 0 | 350 | 0 | 0 | 0 | 200 |
| Kraemer Basin | 0 | 0 | 1,055 | 0 | 0 | 0 | 164 |
| La Palma Basin | 36 | 53 | 101 | 4,122 | 165 | 137 | 215 |
| Mira Loma | 35 | 35 | 53 | 1,182 | 64 | 39 | 218 |
| La Jolla Basin | 0 | 0 | 20 | 0 | 0 | 0 | 199 |
| Placentia Basin | 0 | 0 | 200 | na | na | na | na |
| Raymond Basin | 0 | 0 | 200 | 0 | na | na | na |
| Five Coves Basins | 0 | 0 | 329 | na | na | na | na |
| Burriss Pit | 1,939 | 1,604 | 2,500 | 652 | 36 | 22 | 165 |
| River View Basin | 0 | 0 | 8 | 0 | 0 | 0 | 187 |
| Fletcher Basin | 0 | 0 | 15 | 0 | 0 | 0 | 184 |
| Santiago (Bond) | 3,539 | 3,053 | 8,312 | 795 | 41 | 26 | 221 |
| Santiago (Blu Dia) | 1,301 | 999 | 5,259 | - | - | - | - |
| Totals | 11,078 | 10,876 | 25,247 | 9,678 | | | |
| | | | | | | | |
| Prado Dam | 1 | 0 | 20,000 | | | | |

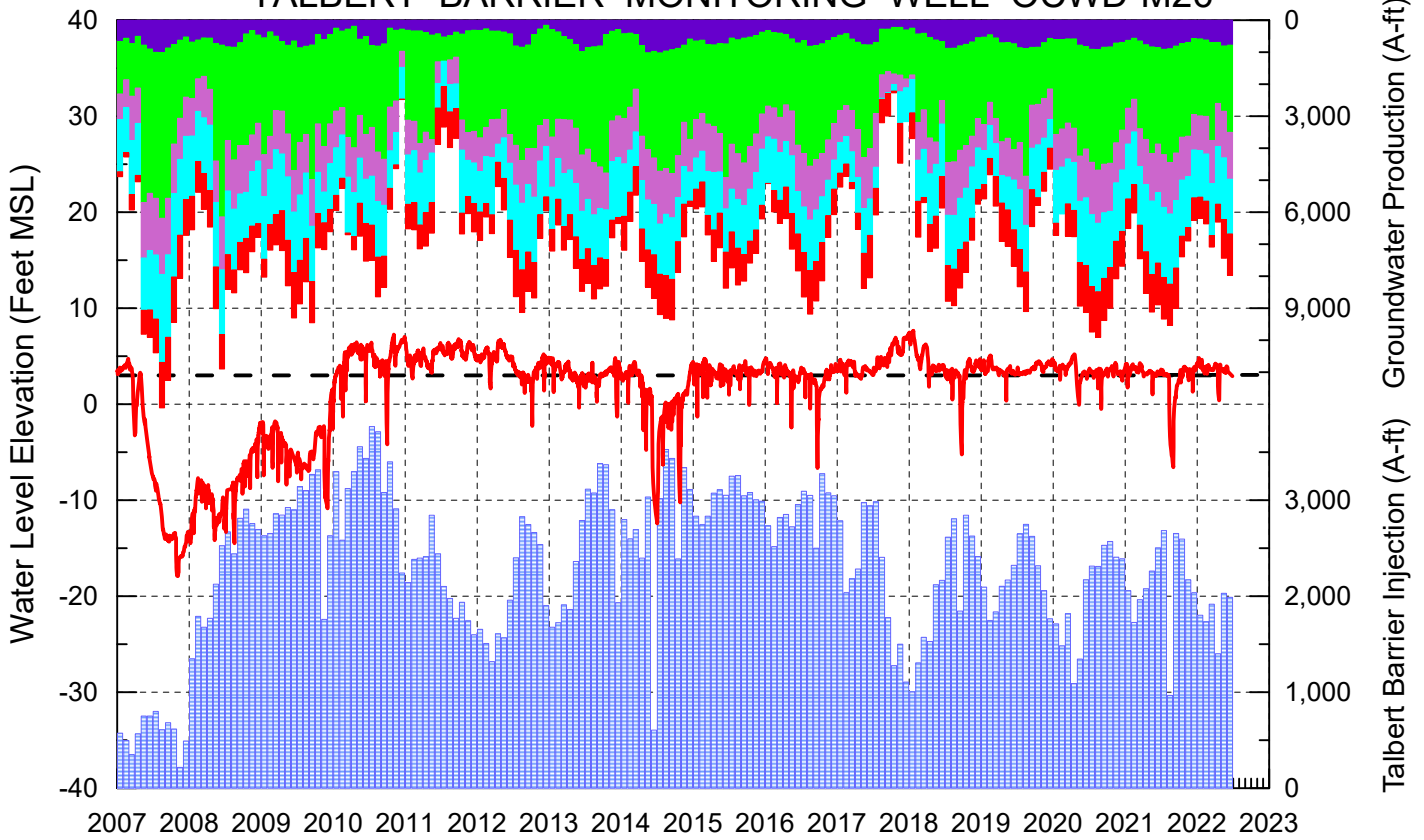
Cumulative Anaheim Field HQ Rainfall



Temperature at Santa Ana Fire Station



TALBERT BARRIER MONITORING WELL OCWD-M26



- Talbert/Lambda Aquifer Mergence Zone Perforated Interval: 71 - 135 ft. bgs
- ▨ Talbert Barrier Injection
- Protective Level to Prevent Seawater Intrusion
- Fountain Valley Groundwater Production
- IRWD Groundwater Production
- Mesa Water Groundwater Production
- Huntington Beach Groundwater Production
- Newport Beach Groundwater Production

