

WATER RESOURCES SUMMARY

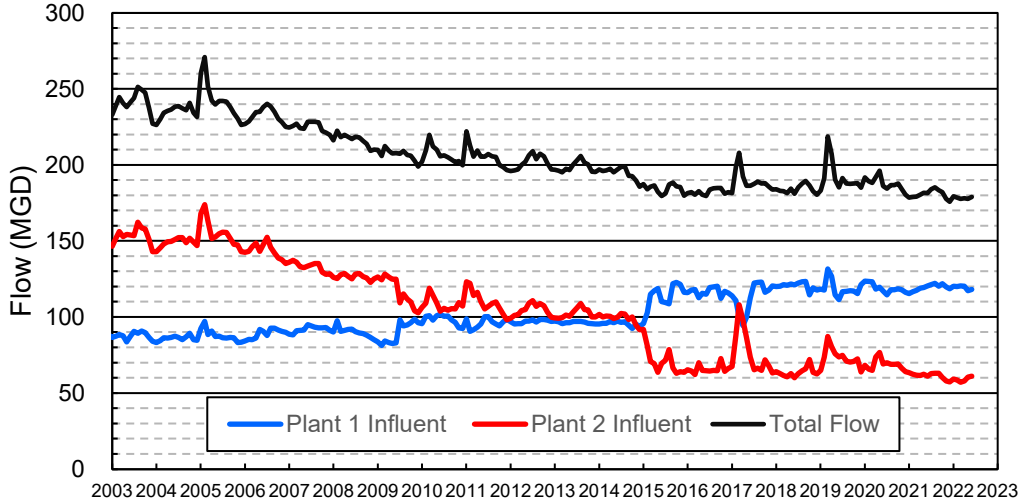
May 2022

INFLOWS & OUTFLOWS (acre-feet)	Total for Month	Year to Date - This Year Last Year	
BASIN SUPPLIES			
Water Purchases from MWD (excludes In Lieu)	0	20,003	0
Water into MWD Storage Account (excludes In Lieu)	0	0	0
SAR & Santiago Creek Flows (accounts for storage to/from recharge facilities)	7,351	121,999	110,484
GWRS Water to Forebay	5,737	55,454	56,328
GWRS Water to Mid-Basin Injection Wells	754	7,150	9,797
GWRS Water to Talbert Barrier	2,030	21,992	24,609
OC-44 and F. Valley Water to Talbert Barrier	0	13	17
Alamitos Barrier Water	205	2,467	2,364
Incidental Recharge (estimated)	1,600	22,800	18,051
Evaporation from Recharge Basins	(215)	(2,311)	(2,997)
River Flow Lost to Ocean	<u>0</u>	<u>(16,390)</u>	<u>(1,218)</u>
Total Groundwater Recharge	17,462	233,176	217,435
WATER PRODUCTION			
Groundwater Production	21,934	231,699	258,603
MWD Storage Program Withdrawals	<u>0</u>	<u>0</u>	<u>0</u>
Total Groundwater Production	21,934	231,699	258,603
BASIN BALANCE			
Change in Groundwater Storage	(4,472)	1,477	(41,168)
Change in Groundwater Storage excluding MWD Stored Water	(4,472)	1,477	(41,168)
Accumulated Overdraft	-----	246,525	241,171
Accumulated Overdraft excluding MWD Storage	-----	246,525	241,170
IN LIEU WATER			
OCWD In Lieu Purchases (MWD Cyclic Storage)	0	0	0
MWD In Lieu Storage	<u>0</u>	<u>0</u>	<u>0</u>
Total In Lieu	0	0	0
OTHER KEY INFORMATION			
1. MWD Water Deliveries to Producers	9,834	107,721	91,184
2. Basin Production Percentage	69.0%	68.3%	73.9%
3. Total Water Demand	33,416	356,410	366,376
4. Total GWRS Production	8,526	84,726	90,788
5. Green Acres Project Water	396	3,364	3,766
6. SAR Water Quality			
- Total Dissolved Solids (TDS) of SAR below Prado Dam (ppm)	708	-----	756
- Total Nitrogen of SAR below Prado Dam (ppm)	3.7	-----	4.7
7. Month-End Water Storage Behind Prado Dam	1	-----	2
8. Month-End Water Storage in Recharge Facilities	11,078	-----	10,003
9. Water Storage Change in Recharge Facilities	(1,736)	2,418	(5,736)
10. Total Artificial Recharge	15,862	210,376	199,382
11. Monthly Mean Temperature at Santa Ana Fire Station (°F)	66.5	-----	66.7
12. Rainfall at FHQ (inches)	0.00	6.91	5.75

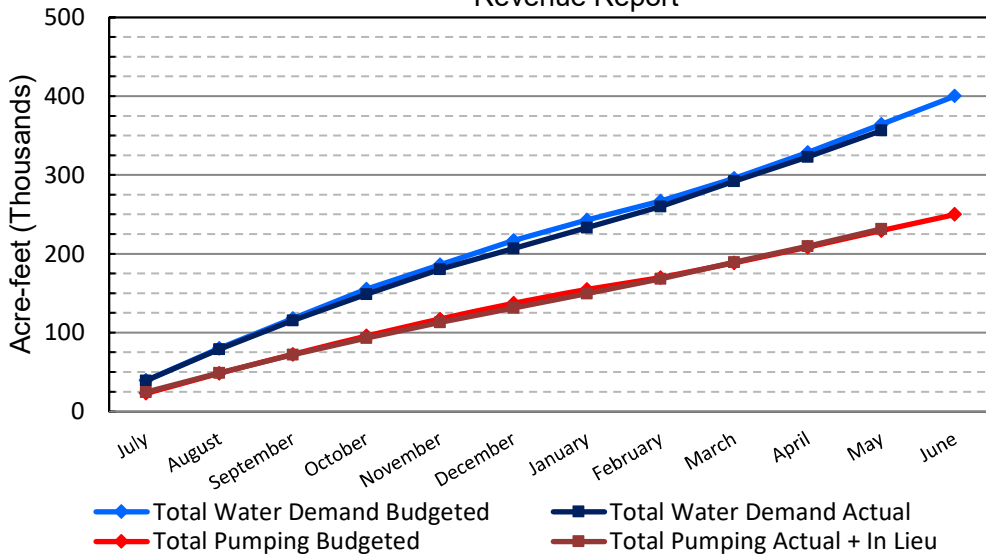
*** Note: Data are preliminary, subject to change

6/9/2022

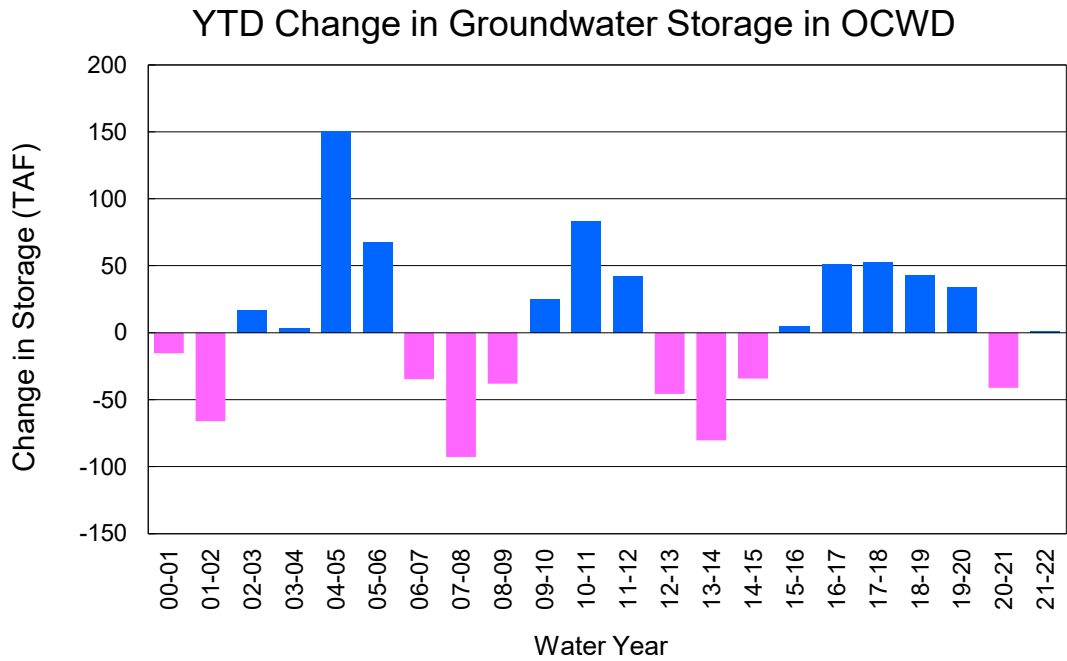
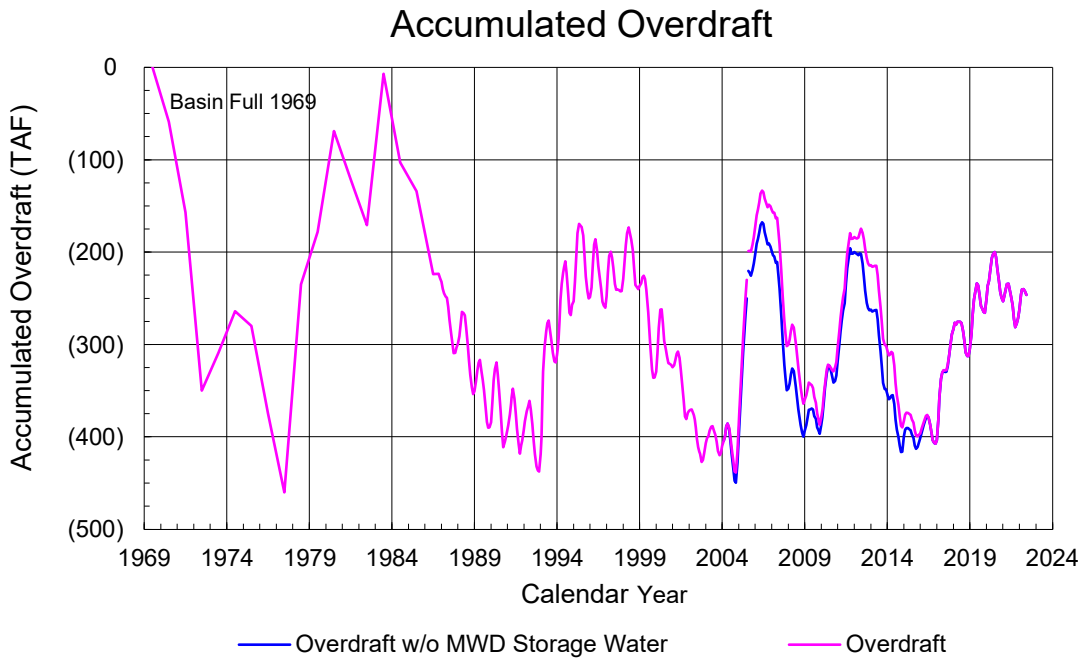
Orange County Sanitation District Influent Flows Report



2021-22 Water Demands/Groundwater Pumping + In Lieu/RA Revenue Report



	Monthly		Accumulated Total for the Year			
	Budget	Actual	Budget	Actual	Difference	Percent
Total Water Demand	35,500	33,416	364,200	356,410	-7,790	97.86%
Total Pumping + In Lieu	21,100	21,934	229,600	231,699	2,099	100.91%
RA Revenue	\$9,748,200	\$10,133,555	\$106,075,200	\$107,044,866	\$969,666	100.91%



PRODUCERS WATER USAGE SUMMARY

May 2022
(AF except BPP)

WATER AGENCY	Ground-water (1)	In Lieu	Reclaimed Water	Total Import (2)	Total Demand	2021-22 YTD Demand	2020-21 YTD Demand	YTD % Diff Demand	MAY 2022 BPP	2021-22 YTD BPP	2020-21 YTD BPP
Anaheim	1,525	0	0	3,684	5,209	54,317	52,675	103%	29.3%	29.0%	26.7%
Buena Park	1,118	0	0	55	1,173	11,993	12,064	99%	95.3%	88.0%	89.0%
East Orange County	0	0	0	78	78	827	888	93%	0.0%	0.3%	8.0%
Fountain Valley	804	0	131	0	934	9,263	9,481	98%	100.0%	100.0%	100.0%
Fullerton	1,445	0	0	684	2,129	21,593	22,193	97%	67.9%	74.8%	72.1%
Garden Grove	750	0	0	1,234	1,983	20,118	21,036	96%	37.8%	76.2%	77.0%
Golden State	1,334	0	0	733	2,067	21,145	22,047	96%	64.5%	63.2%	70.4%
West OC System	1,253	-	-	3	1,255	12,829	13,317	96%	na	na	na
East OC System	82	-	-	731	812	8,316	8,730	95%	na	na	na
Huntington Beach	1,932	0	0	469	2,400	23,696	25,271	94%	80.5%	82.8%	85.3%
Irvine Ranch	3,053	0	1,301	103	4,458	55,980	57,197	98%	96.7%	98.6%	99.5%
DRWF Clear	1,296	-	-	-	1,296	24,439	25,865	94%	na	na	na
DRWF Color	744	-	-	-	744	5,777	7,639	76%	na	na	na
Laguna Beach	0	0	0	280	280	3,020	3,289	na	0.0%	0.0%	16.8%
La Palma	159	0	0	0	159	1,604	1,812	89%	100.0%	96.2%	100.0%
Mesa Water (MW)	1,457	0	116	0	1,573	15,914	15,955	100%	100.0%	98.6%	99.6%
MW Clear	994	-	-	-	994	11,665	11,532	101%	na	na	na
MW Amber	463	-	-	-	463	3,199	3,494	92%	na	na	na
Newport Beach	1,207	0	63	102	1,373	13,298	14,142	94%	92.2%	70.9%	95.3%
Orange	1,088	0	0	655	1,743	23,603	25,221	94%	62.4%	54.2%	78.2%
OCWD (GAP)	165	0	0	0	165	1,426	1,490	96%	100.0%	100.0%	100.0%
Santa Ana	1,991	0	37	928	2,956	30,324	31,078	98%	68.2%	76.7%	76.9%
Seal Beach	293	0	0	1	293	3,053	3,117	98%	99.7%	80.8%	72.2%
Serrano	248	0	0	12	260	2,568	2,555	101%	95.4%	27.6%	0.2%
Tustin	518	0	0	457	974	9,936	10,205	97%	53.1%	56.0%	83.5%
Westminster	954	0	0	0	954	9,891	10,006	99%	100.0%	100.0%	100.0%
Yorba Linda	<u>1,437</u>	<u>0</u>	<u>0</u>	<u>347</u>	<u>1,784</u>	<u>17,874</u>	<u>18,410</u>	<u>97%</u>	<u>80.6%</u>	<u>30.5%</u>	<u>58.4%</u>
SUBTOTAL:	21,477	0	1,648	9,822	32,946	351,442	360,131	98%	69.0%	68.3%	73.9%
Other Producers (Est ~3% of Subtotal)	<u>457</u>	<u>0</u>	<u>0</u>	<u>13</u>	<u>470</u>	<u>4,968</u>	<u>6,245</u>	<u>80%</u>			
TOTAL:	21,934	0	1,648	9,834	33,416	356,410	366,376		69.0%	68.3%	73.9%
OCWD (Talbert Barrier)	0		2,030	0	2,030	22,005	24,626				
OCSD (GAP)	na		49	na	49	544	993				

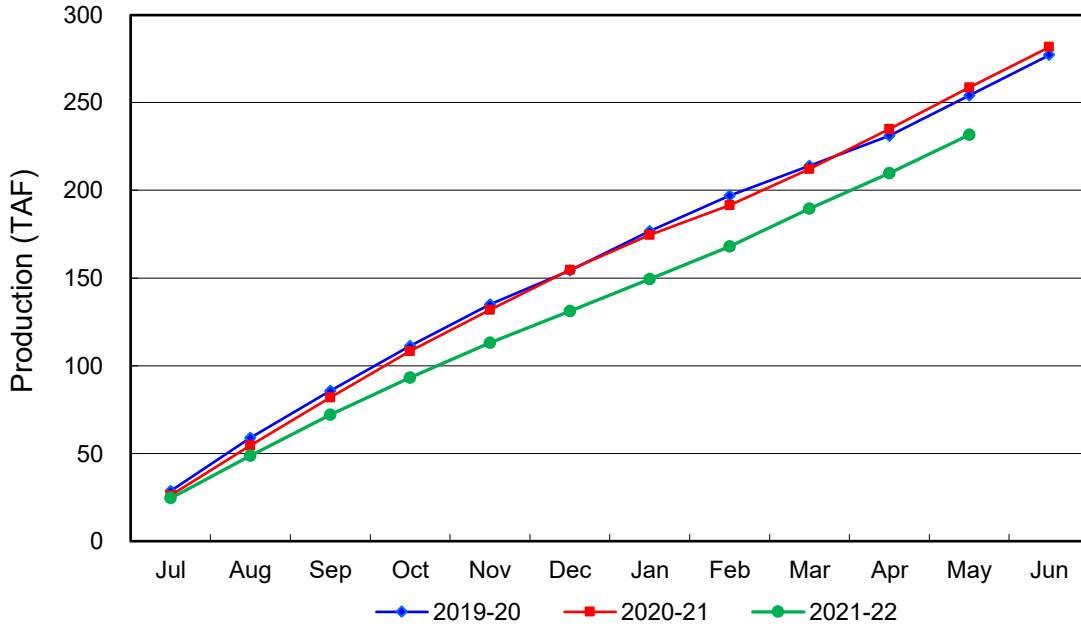
Estimated

(1) Excludes MWD CUP Withdrawals

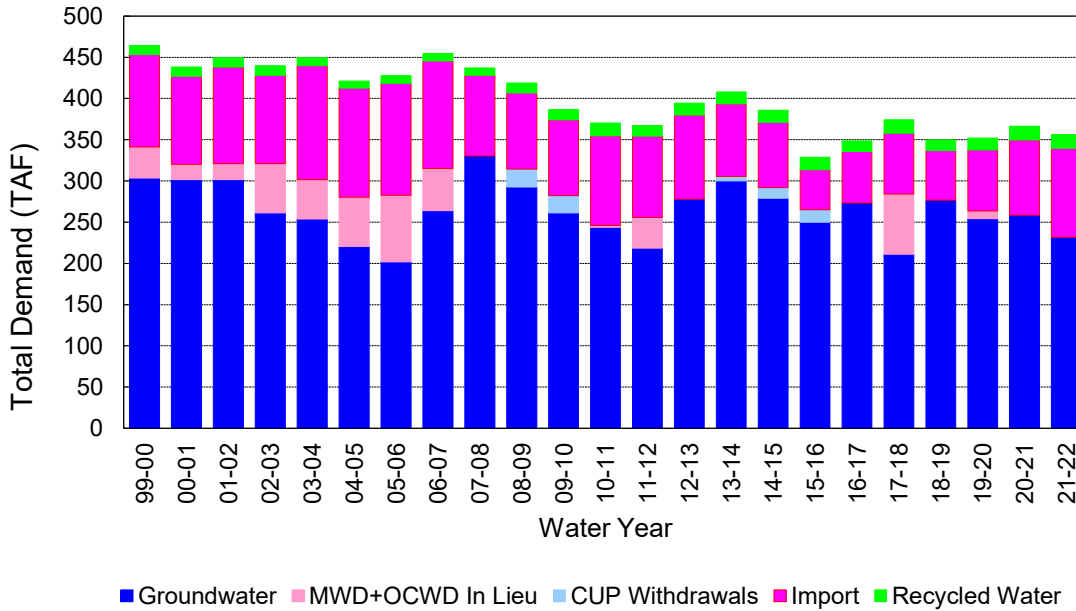
(2) Includes MWD CUP Withdrawals & In Lieu Water

6/9/2022 14:42

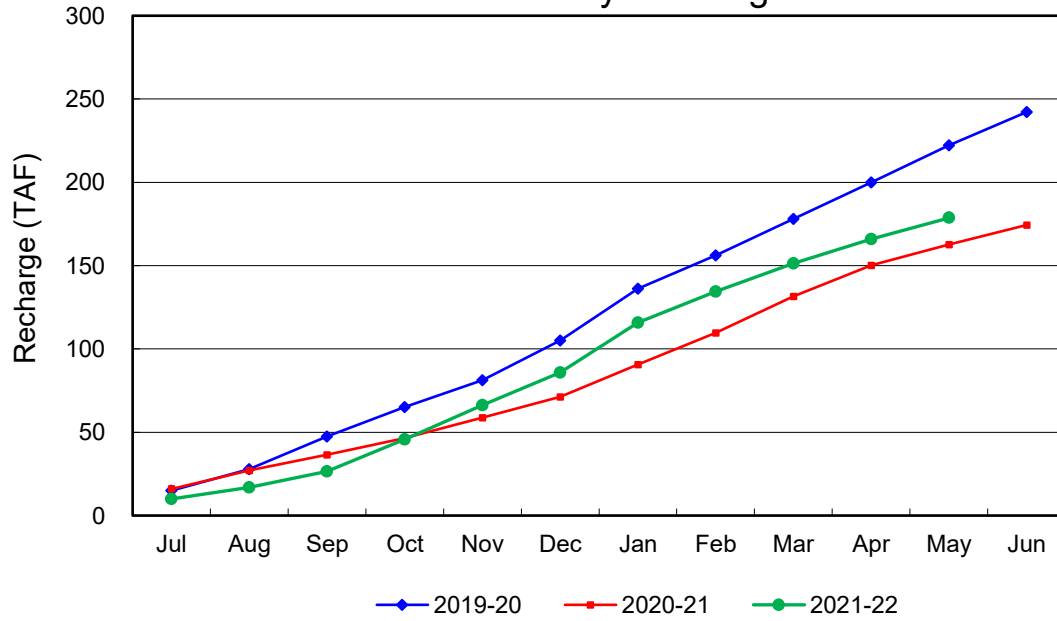
Annual Groundwater Production



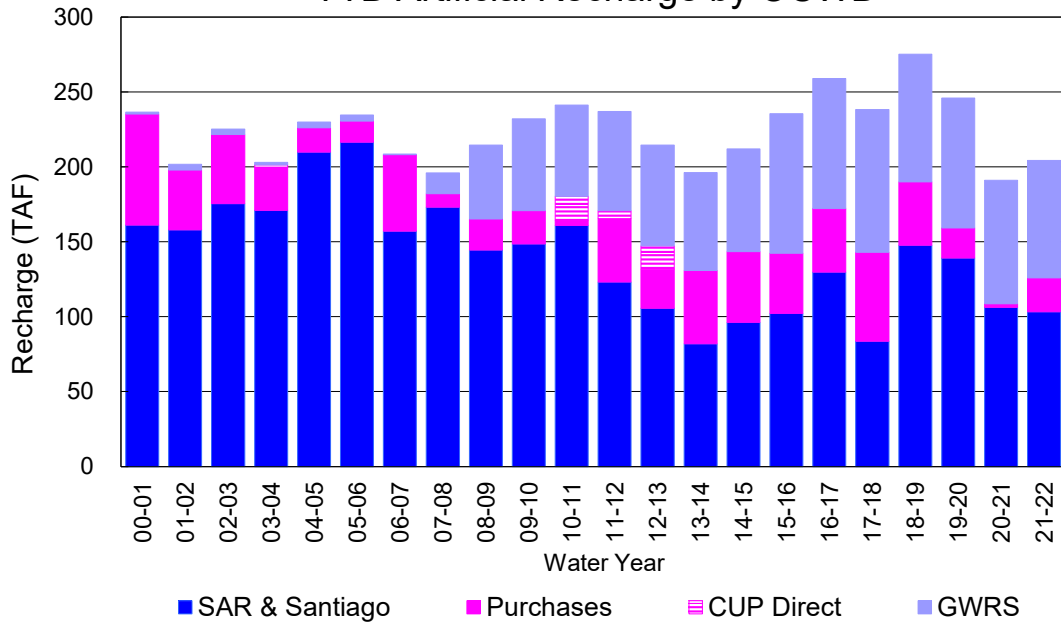
YTD Total Demand in OCWD



Annual Forebay Recharge



YTD Artificial Recharge by OCWD



RECHARGE AREAS REPORT

May 2022

	Percolation (AF)	Remarks
RIVER SYSTEM	3,563	58 cfs per day average perc
DESILTING SYSTEM	na	SAR
OFF-RIVER SYSTEM	540	
WARNER SYSTEM	1,074	SAR
OLIVE BASIN	na	Passive System
ANAHEIM LAKE	0	SAR
MINI-ANA LAKE	0	
MILLER BASIN	0	SAR
KRAEMER BASIN	0	SAR
LA PALMA BASIN	3,338	GWRS
MIRA LOMA	2,369	GWRS
LA JOLLA BASIN	0	
PLACENTIA BASIN	na	
RAYMOND BASIN	0	
FIVE COVES BASIN	na	
BURRIS BASIN	711	SAR
RIVER VIEW BASIN	0	
FLETCHER BASIN	0	
SANTIAGO BASINS	1,280	
SANTIAGO CREEK	0	
TOTALS	12,875	
5-YR AVERAGE	19,759	

FLOWS TO RECHARGE AREAS (AF)	
Imperial Headgates (estimated)	5,615
GWRS	5,739
OC-28 (MWD)	0
OC-28a (MWD)	0
OC-59	0
Est'd local Forebay inflow below Imperial	0
Est'd local Santiago inflow (estimated)	0
Irvine lake releases (OC-13 MWD)	0
Villa Park Dam releases (estimated)	0
Precip at Warner Basin (inches)	0.00
Precip direct to open water surfaces	0
TOTAL INFLOW	11,354

LOSSES FROM RECHARGE AREAS (AF)	
Est'd SAR flow past Chapman Ave.	0
Est'd Santiago Cr. flow to SAR	0
Est'd flows past Raymond Basin	0
Calc'd evap (inches) Estimated	5.12
Est'd evaporative losses	215
TOTAL LOSSES	215

STORAGE CHANGES (AF)			
Facility	Begin	End	Net
Deep basins	6,726	6,238	-488
Santiago Pits	6,088	4,840	-1,248
River			
Off-river			
Irvine Lake			
TOTAL	12,814	11,078	-1,736

SUMMARY (AF)	
TOTAL INFLOW	11,354
TOTAL LOSSES	215
STORAGE CHANGE	-1,736
CALC'D PERCOLATION	12,875

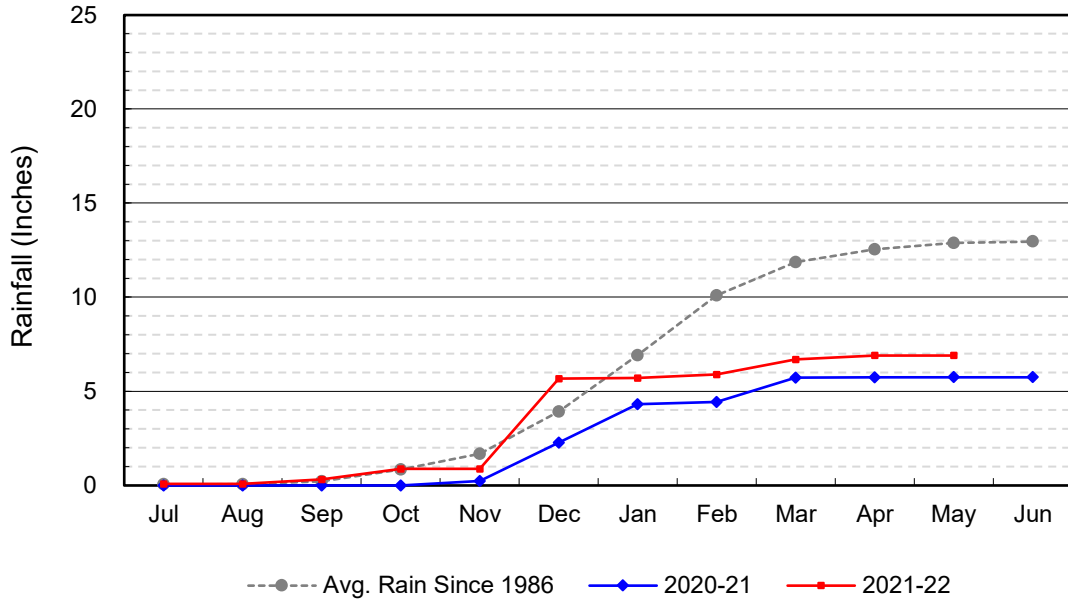
DEEP BASINS MONTHLY STATUS

May 2022

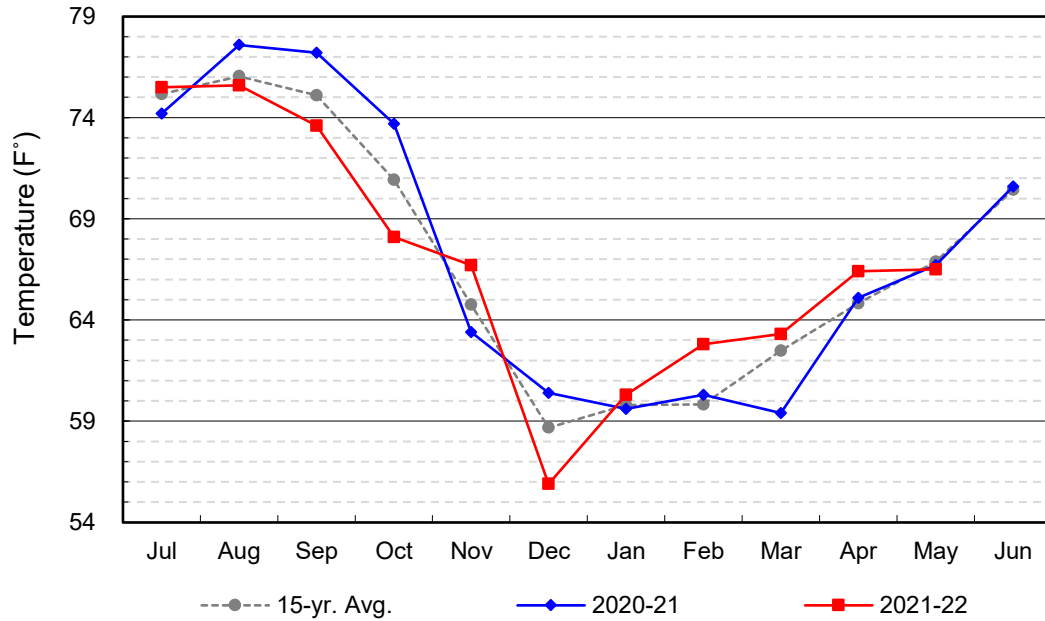
(values in acre-feet)

<i>Facility</i>	<i>Storage Start</i>	<i>Storage End</i>	<i>Maximum Storage</i>	<i>Total Perc</i>	<i>Max Perc</i>	<i>Avg Perc</i>	<i>Avg W.S. Elev</i>
Desilting Ponds	230	230	252	na	na	na	na
Fos-Huckleberry	557	533	628	na	na	na	na
Conrock Basin	550	554	661	na	na	na	na
Warner Basins	2,897	2,903	2,900	1,074	na	na	238
Olive Pit	30	8	95	na	na	na	202
Anaheim Lake	0	0	2,300	0	0	0	168
Mini-Anaheim Lk	0	0	10	0	0	0	220
Miller Basin	0	0	350	0	0	0	200
Kraemer Basin	0	0	1,055	0	0	0	164
La Palma Basin	12	36	101	3,338	129	108	213
Mira Loma	30	35	53	2,369	90	76	218
La Jolla Basin	0	0	20	0	0	0	199
Placentia Basin	0	0	200	na	na	na	na
Raymond Basin	0	0	200	0	na	na	na
Five Coves Basins	235	0	329	na	na	na	na
Burriss Pit	2,185	1,939	2,500	711	35	23	167
River View Basin	0	0	8	0	0	0	187
Fletcher Basin	0	0	15	0	0	0	184
Santiago (Bond)	4,291	3,539	8,312	1,280	59	41	230
Santiago (Blu Dia)	1,797	1,301	5,259	-	-	-	-
Totals	12,814	11,078	25,247	8,772			
Prado Dam	2	1	20,000				

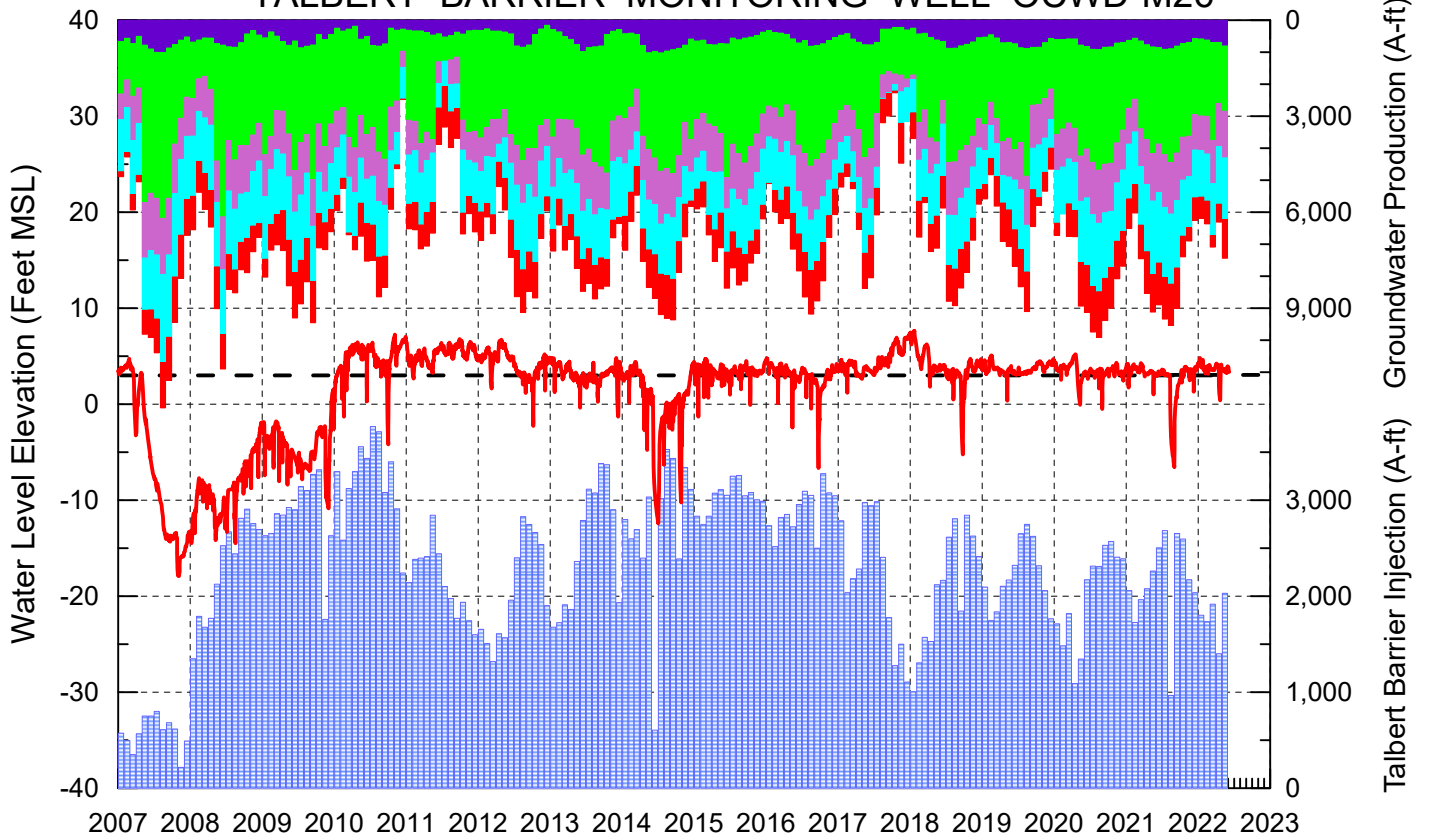
Cumulative Anaheim Field HQ Rainfall



Temperature at Santa Ana Fire Station



TALBERT BARRIER MONITORING WELL OCWD-M26



- Talbert/Lambda Aquifer Mergence Zone
Perforated Interval: 71 - 135 ft. bgs
- ▨ Talbert Barrier Injection
- Protective Level to Prevent Seawater Intrusion
- Fountain Valley Groundwater Production
- IRWD Groundwater Production
- Mesa Water Groundwater Production
- Huntington Beach Groundwater Production
- Newport Beach Groundwater Production

