

WATER RESOURCES SUMMARY

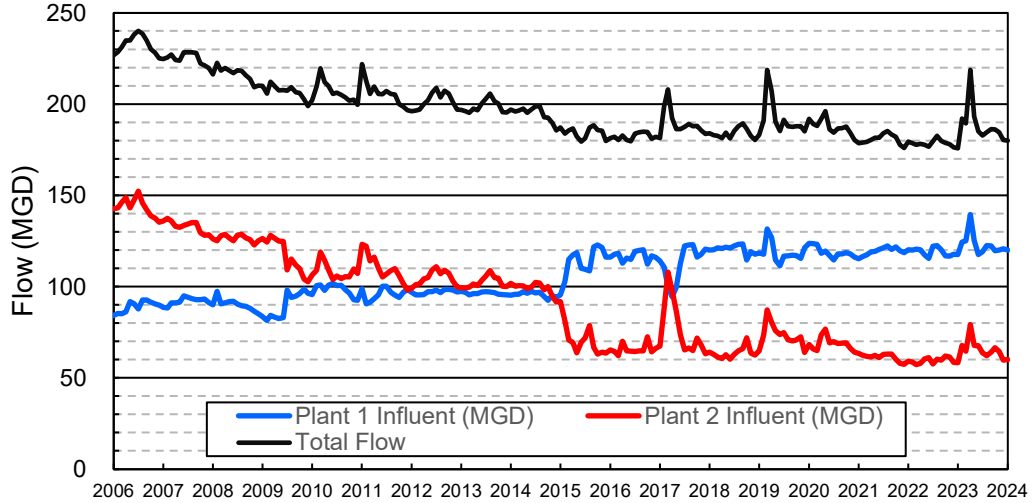
December 2023

INFLOWS & OUTFLOWS (acre-feet)	Total for Month	Year to Date - This Year Last Year	
BASIN SUPPLIES			
Water Purchases from MWD (excludes In Lieu)	0	0	16,864
Water into MWD Storage Account (excludes In Lieu)	0	0	0
SAR & Santiago Creek Flows (accounts for storage to/from recharge facilities)	12,074	76,045	45,345
GWRS Water to Forebay	8,838	46,052	34,002
GWRS Water to Mid-Basin Injection Wells	583	3,766	3,931
GWRS Water to Talbert Barrier	1,414	10,041	11,825
OC-44 and F. Valley Water to Talbert Barrier	1	7	17
Alamitos Barrier Water	180	1,046	1,432
Incidental Recharge (estimated)	2,500	9,700	11,100
Evaporation from Recharge Basins	(217)	(2,025)	(1,332)
River Flow Lost to Ocean	(313)	(714)	(394)
Total Groundwater Recharge	25,061	143,916	122,790
WATER PRODUCTION			
Groundwater Production	21,112	147,720	127,954
MWD Storage Program Withdrawals	<u>0</u>	<u>0</u>	<u>0</u>
Total Groundwater Production	21,112	147,720	127,954
BASIN BALANCE			
Change in Groundwater Storage	3,949	(3,804)	(5,165)
Change in Groundwater Storage excluding MWD Stored Water	3,949	(3,804)	(5,165)
Accumulated Overdraft	-----	192,807	263,167
Accumulated Overdraft excluding MWD Storage	-----	192,806	263,167
IN LIEU WATER			
OCWD In Lieu Purchases (MWD Cyclic Storage)	0	0	0
MWD In Lieu Storage	<u>0</u>	<u>0</u>	<u>0</u>
Total In Lieu	0	0	0
OTHER KEY INFORMATION			
1. MWD Water Deliveries to Producers	4,809	35,713	58,894
2. Basin Production Percentage	81.4%	80.5%	68.5%
3. Total Water Demand	27,641	194,495	197,539
4. Total GWRS Production	10,839	59,891	49,802
5. Green Acres Project Water	117	1,893	2,124
6. SAR Water Quality			
- Total Dissolved Solids (TDS) of SAR below Prado Dam (ppm)	648	-----	248
- Total Nitrogen of SAR below Prado Dam (ppm)	9.4	-----	2.0
7. Month-End Water Storage Behind Prado Dam	20	-----	681
8. Month-End Water Storage in Recharge Facilities	14,517	-----	13,767
9. Water Storage Change in Recharge Facilities	1,465	(6,733)	2,891
10. Total Artificial Recharge	22,561	134,216	111,690
11. Monthly Mean Temperature at Santa Ana Fire Station (°F)	61.8	-----	58.1
12. Rainfall at FHQ (inches)	1.30	4.10	5.48

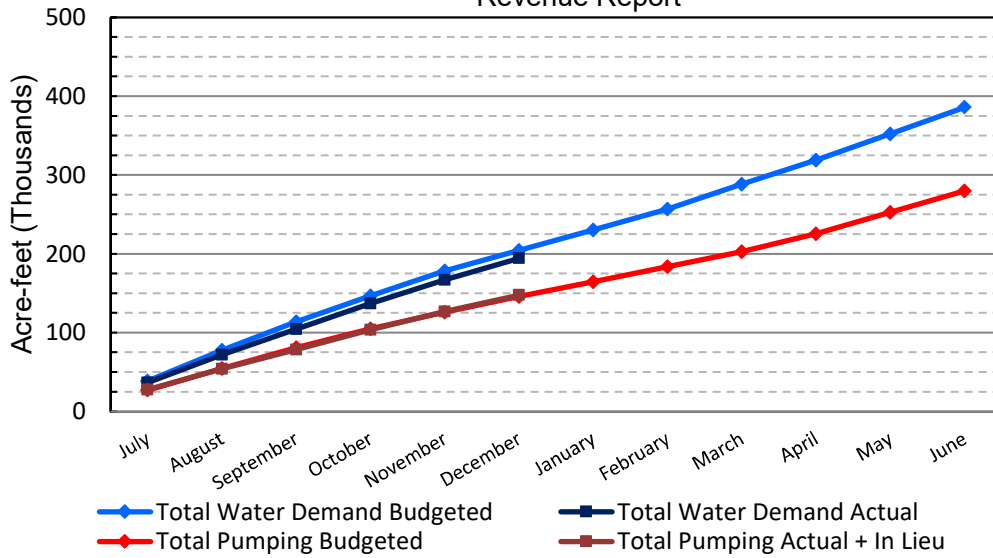
*** Note: Data are preliminary, subject to change

1/11/2024

Orange County Sanitation District Influent Flows Report

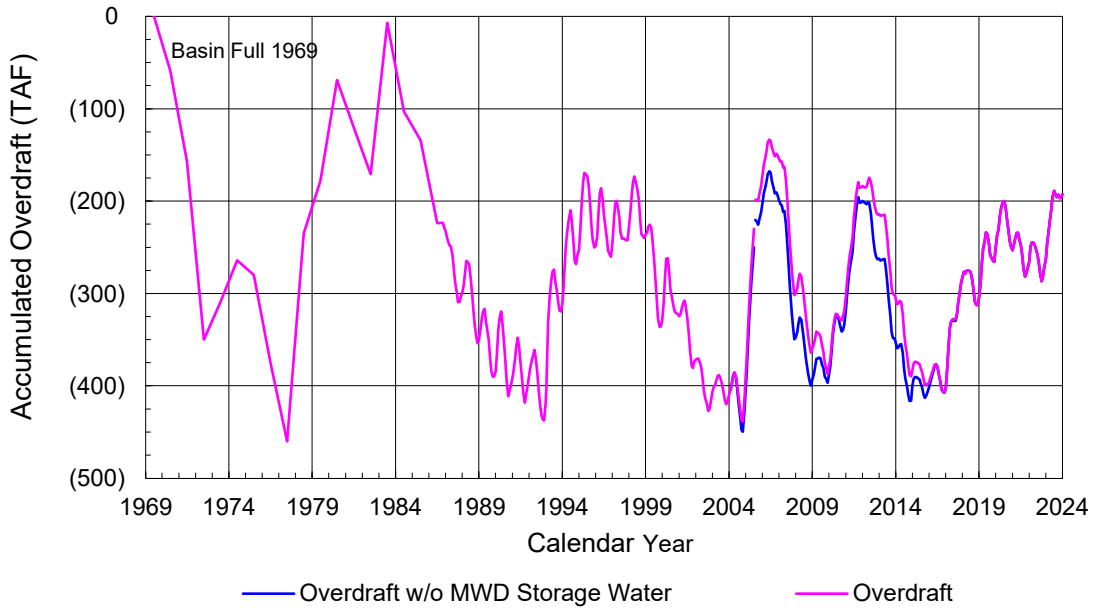


2023-24 Water Demands/Groundwater Pumping + In Lieu/RA Revenue Report

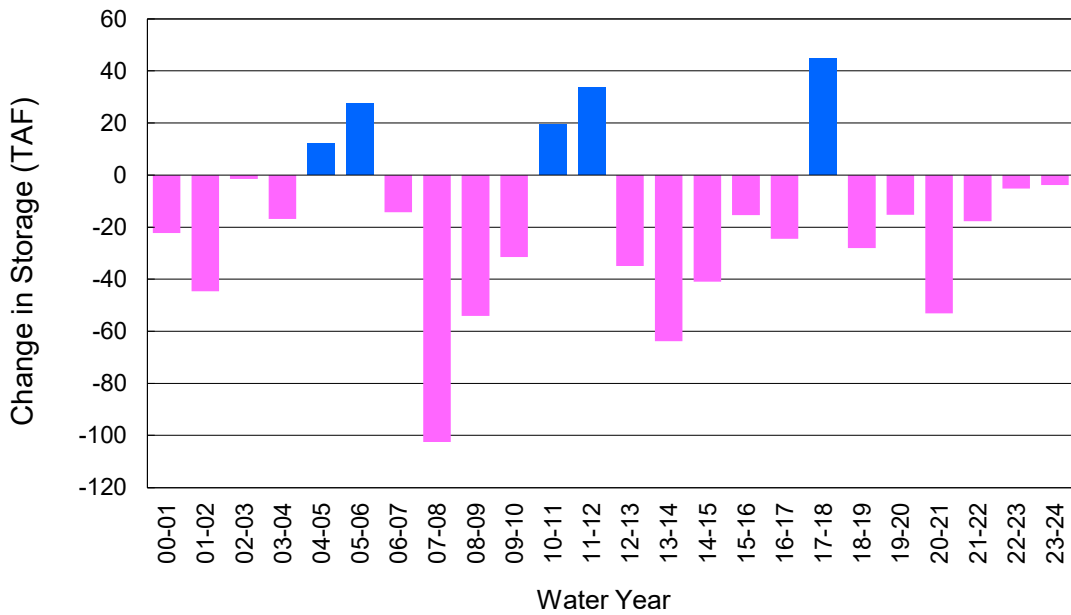


	Monthly		Accumulated Total for the Year			
	Budget	Actual	Budget	Actual	Difference	Percent
Total Water Demand	26,300	27,641	204,400	194,495	-9,905	95.15%
Total Pumping + In Lieu	20,000	21,112	145,800	147,720	1,920	101.32%
RA Revenue	\$9,240,000	\$9,753,812	\$67,359,600	\$68,246,832	\$887,232	101.32%

Accumulated Overdraft



YTD Change in Groundwater Storage in OCWD



PRODUCERS WATER USAGE SUMMARY

December 2023

(AF except BPP)

WATER AGENCY	Ground-water (1)	In Lieu	Reclaimed Water	Total Import (2)	Total Demand	2023-24 YTD Demand	2022-23 YTD Demand	YTD % Diff Demand	DEC 2023 BPP	2023-24 YTD BPP	2022-23 YTD BPP
Anaheim	2,217	0	0	1,824	4,041	28,448	29,747	96%	54.9%	49.5%	26.1%
Buena Park	881	0	0	0	881	6,545	6,688	98%	100.0%	90.2%	82.9%
East Orange County	0	0	0	57	57	444	431	103%	0.5%	0.4%	0.2%
Fountain Valley	698	0	61	0	759	5,100	4,969	103%	100.0%	100.0%	100.0%
Fullerton	1,236	0	0	276	1,512	11,463	11,866	97%	81.7%	75.2%	75.5%
Garden Grove	1,625	0	0	0	1,625	11,196	10,878	103%	100.0%	100.0%	61.7%
Golden State	1,082	0	0	546	1,628	11,410	11,304	101%	66.5%	61.0%	58.5%
West OC System	782	-	-	209	991	6,950	6,837	102%	na	na	na
East OC System	300	-	-	337	637	4,460	4,467	100%	na	na	na
Huntington Beach	1,647	0	0	156	1,803	12,810	13,047	98%	91.4%	84.2%	57.6%
Irvine Ranch	3,552	0	1,602	0	5,154	33,300	32,456	103%	100.0%	99.8%	99.5%
DRWF Clear	2,195	-	-	-	2,195	15,570	14,491	107%	na	na	na
DRWF Color	702	-	-	-	702	4,244	4,235	100%	na	na	na
Laguna Beach	0	0	0	230	230	1,639	1,690	na	0.0%	0.0%	8.1%
La Palma	124	0	0	0	124	895	894	100%	100.0%	100.0%	99.6%
Mesa Water (MW)	1,134	0	34	0	1,168	8,557	8,615	99%	100.0%	100.0%	99.9%
MW Clear	1,010	-	-	-	1,010	7,215	5,931	122%	na	na	na
MW Amber	124	-	-	-	124	886	2,190	40%	na	na	na
Newport Beach	557	0	12	347	916	7,001	7,553	93%	61.6%	83.4%	88.6%
Orange	1,626	0	0	120	1,746	12,895	12,983	99%	93.1%	85.6%	68.9%
OCWD (GAP)	109	0	0	0	109	923	754	122%	100.0%	100.0%	100.0%
Santa Ana	1,682	0	9	751	2,442	16,509	16,615	99%	69.1%	87.2%	63.1%
Seal Beach	232	0	0	0	233	1,599	1,554	103%	99.8%	99.7%	55.6%
Serrano	29	0	0	134	162	1,377	1,591	87%	17.6%	46.9%	77.0%
Tustin	592	0	0	163	755	5,442	5,442	100%	78.4%	67.2%	46.2%
Westminster	788	0	0	0	788	5,260	5,292	99%	100.0%	100.0%	95.2%
Yorba Linda	<u>1,051</u>	<u>0</u>	<u>0</u>	<u>199</u>	<u>1,250</u>	<u>9,891</u>	<u>9,848</u>	<u>100%</u>	<u>84.1%</u>	<u>83.6%</u>	<u>81.4%</u>
SUBTOTAL:	20,863	0	1,718	4,802	27,383	192,704	194,216	99%	81.4%	80.5%	68.1%
Other Producers (Est ~3% of Subtotal)	<u>249</u>	<u>0</u>	<u>0</u>	<u>6</u>	<u>256</u>	<u>1,791</u>	<u>3,322</u>	<u>54%</u>			
TOTAL:	21,112	0	1,718	4,809	27,639	194,495	197,539		81.4%	80.5%	68.1%
OCWD (Talbert Barrier)	0		1,414	0	1,414	10,048	10,387				
OCSA (GAP)	na		0	na	0	532	385				

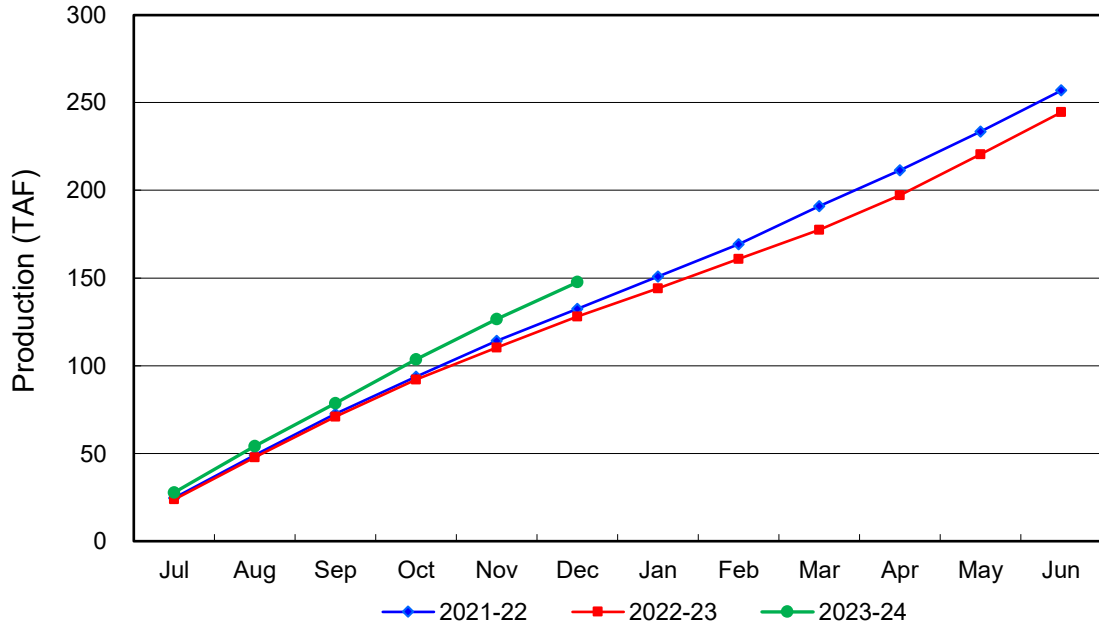
Estimated

(1) Excludes MWD CUP Withdrawals

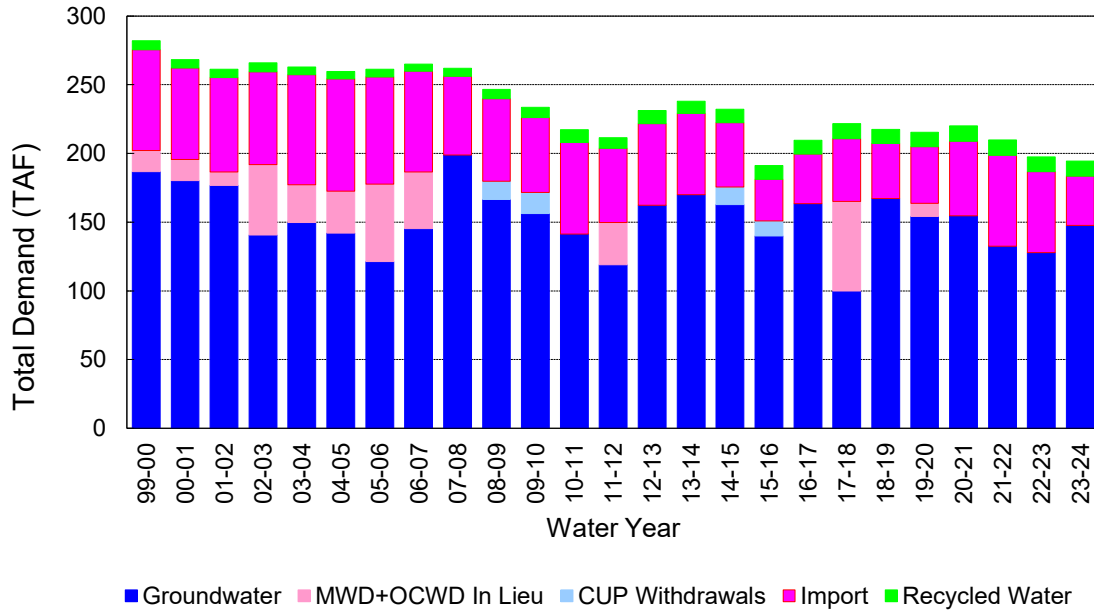
(2) Includes MWD CUP Withdrawals & In Lieu Water

1/11/2024 14:36

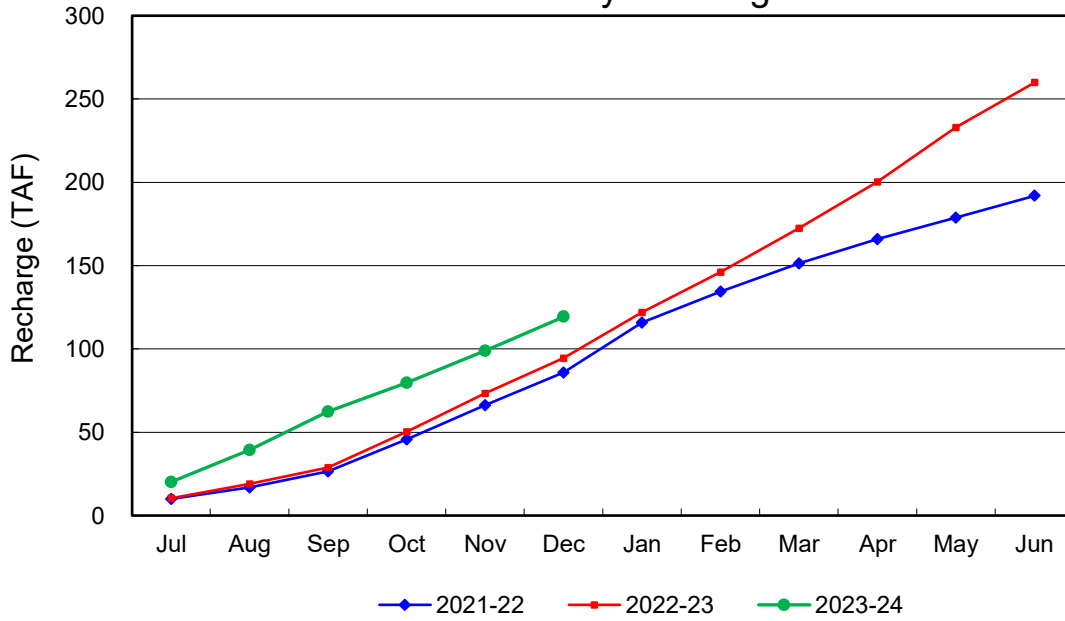
Annual Groundwater Production



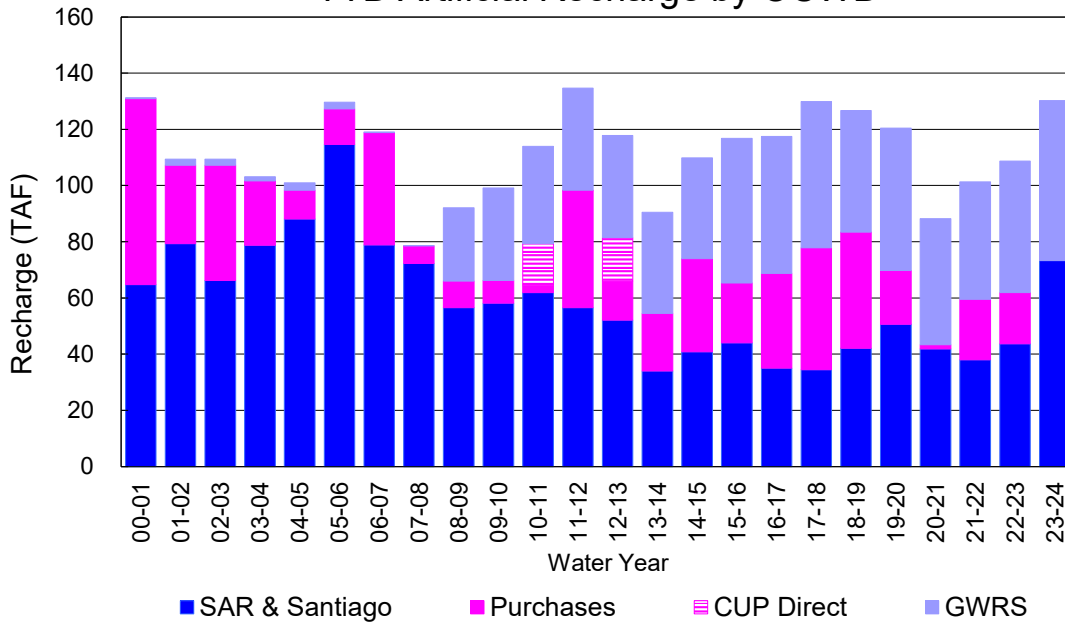
YTD Total Demand in OCWD



Annual Forebay Recharge



YTD Artificial Recharge by OCWD



RECHARGE AREAS REPORT

December 2023

	Percolation (AF)	Remarks
RIVER SYSTEM	4,877	79 cfs per day average perc
DESILTING SYSTEM	na	SAR
OFF-RIVER SYSTEM	1,327	SAR
WARNER SYSTEM	1,058	SAR
OLIVE BASIN	na	Passive System
ANAHEIM LAKE	926	SAR
MINI-ANA LAKE	na	
MILLER BASIN	444	SAR
KRAEMER BASIN	na	
LA PALMA BASIN	5,639	GWRS
MIRALOMA BASIN	3,225	GWRS
LA JOLLA BASIN	121	SAR
PLACENTIA BASIN	na	
RAYMOND BASIN	na	
FIVE COVES BASIN	na	SAR
BURRIS BASIN	704	SAR
RIVER VIEW BASIN	109	SAR, Burris Pumping
FLETCHER BASIN	27	Local Runoff
SANTIAGO BASINS	1,774	SAR, Burris Pumping, Local Runoff
SANTIAGO CREEK	156	SAR, Burris Pumping, Local Runoff
TOTALS	20,387	
5-YR AVERAGE	19,533	

FLOWS TO RECHARGE AREAS (AF)	
Imperial Headgates (estimated)	12,499
GWRS	8,842
OC-28 (MWD)	0
OC-28a (MWD)	0
OC-59	0
Est'd local Forebay inflow below Imperial	419
Est'd local Santiago inflow (estimated)	536
Irvine lake releases (OC-13 MWD)	0
Villa Park Dam releases (estimated)	0
Precip at Warner Basin (inches)	1.30
Precip direct to open water surfaces	86
TOTAL INFLOW	22,382

LOSSES FROM RECHARGE AREAS (AF)	
Est'd SAR flow past Chapman Ave.	269
Est'd Santiago Cr. flow to SAR	44
Est'd flows past Raymond Basin	0
Calc'd evap (inches) Estimated	3.29
Est'd evaporative losses	217
TOTAL LOSSES	530

STORAGE CHANGES (AF)			
Facility	Begin	End	Net
Deep basins	5,031	6,413	1,381
Santiago Pits	8,020	8,104	84
River			
Off-river			
Irvine Lake			
TOTAL	13,051	14,517	1,465

SUMMARY (AF)	
TOTAL INFLOW	22,382
TOTAL LOSSES	530
STORAGE CHANGE	1,465
CALC'D PERCOLATION	20,387

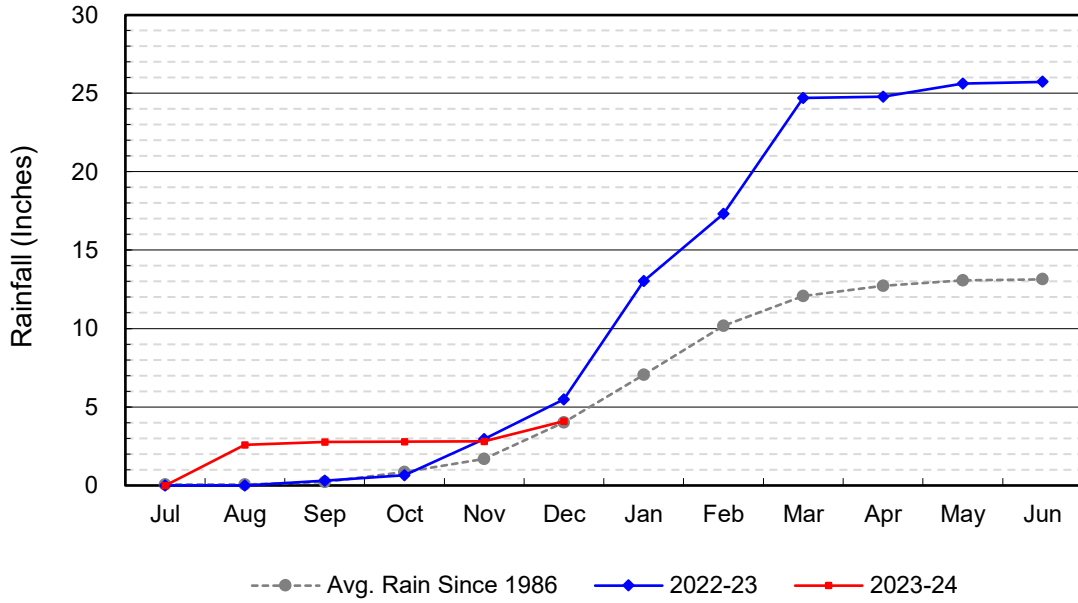
DEEP BASINS MONTHLY STATUS

December 2023

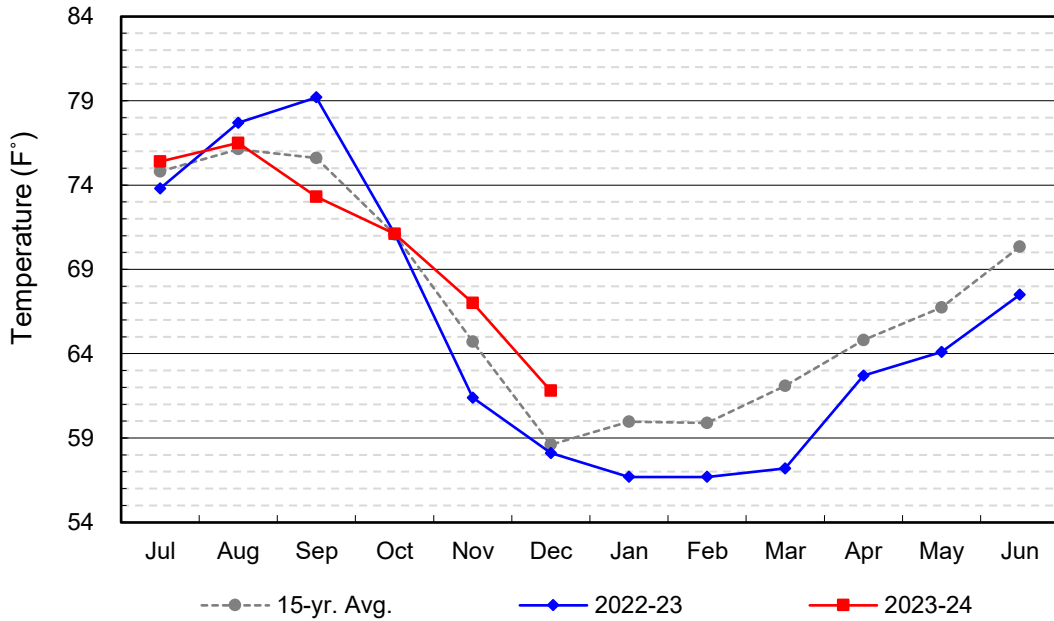
(values in acre-feet)

<i>Facility</i>	<i>Storage Start</i>	<i>Storage End</i>	<i>Maximum Storage</i>	<i>Total Perc</i>	<i>Max Perc</i>	<i>Avg Perc</i>	<i>Avg W.S. Elev</i>
Desilting Ponds	230	230	252	na	na	na	na
Fos-Huckleberry	532	531	628	na	na	na	na
Conrock Basin	550	579	661	na	na	na	na
Warner Basins	2,902	2,885	2,900	1,125	na	na	238
Olive Pit	39	48	95	na	na	na	212
Anaheim Lake	0	306	2,300	985	136	32	174
Mini-Anaheim Lk	0	0	10	na	na	na	na
Miller Basin	0	115	350	472	74	15	202
Kraemer Basin	0	0	1,055	na	na	na	na
La Palma Basin	45	68	101	5,639	196	182	217
Miraloma Basin	25	43	53	3,225	111	104	219
La Jolla Basin	0	0	20	129	24	4	200
Placentia Basin	0	0	200	na	na	na	na
Raymond Basin	0	0	200	na	na	na	na
Five Coves Basins	242	283	329	na	na	na	na
Burriss Pit	463	1,308	2,500	749	35	24	154
River View Basin	0	6	8	116	17	4	187
Fletcher Basin	3	11	15	29	6	1	186
Santiago (Bond)	5,426	5,474	8,312	1,887	87	61	246
Santiago (Blu Dia)	2,594	2,630	5,259	-	-	-	-
Totals	13,051	14,517	25,247	14,356			
Prado Dam	7	20	20,000				

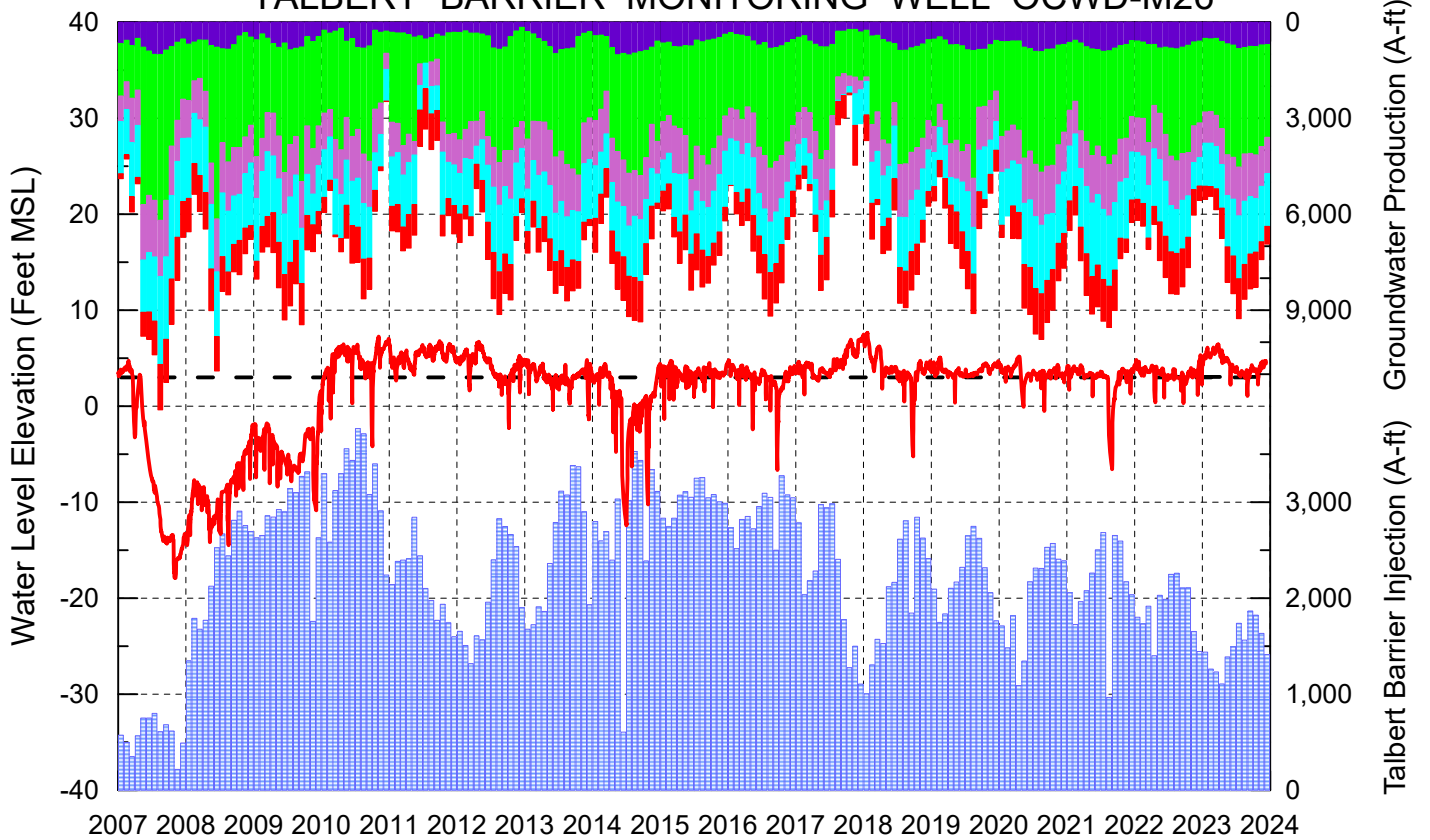
Cumulative Anaheim Field HQ Rainfall



Temperature at Santa Ana Fire Station



TALBERT BARRIER MONITORING WELL OCWD-M26



- Talbert/Lambda Aquifer Mergence Zone Perforated Interval: 71 - 135 ft. bgs
- ▨ Talbert Barrier Injection
- - - Protective Level to Prevent Seawater Intrusion
- ▨ Fountain Valley Groundwater Production
- ▨ IRWD Groundwater Production
- ▨ Mesa Water Groundwater Production
- ▨ Huntington Beach Groundwater Production
- ▨ Newport Beach Groundwater Production

