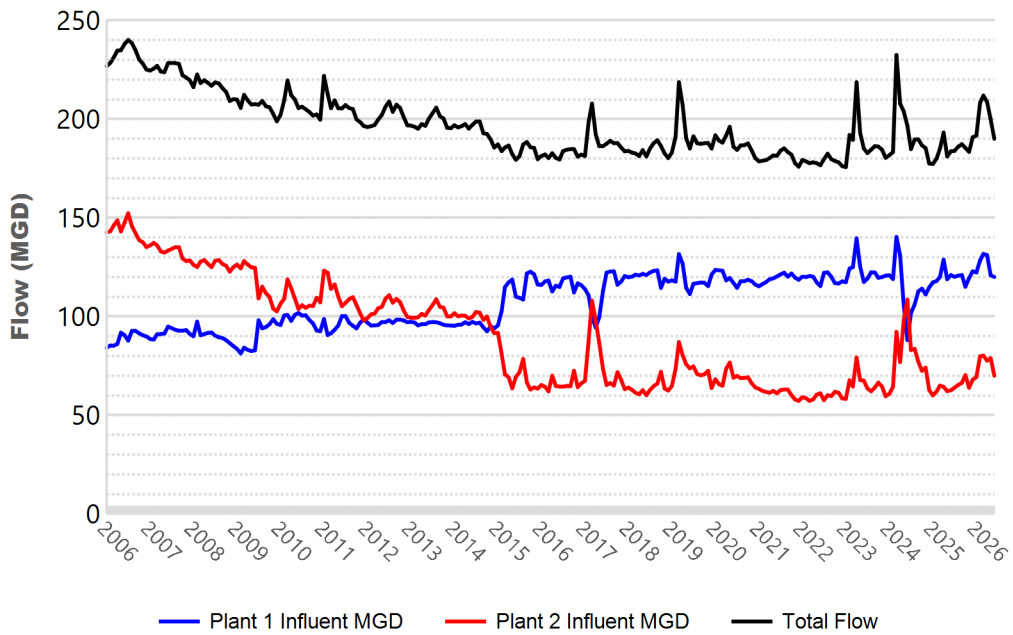


WATER RESOURCES SUMMARY

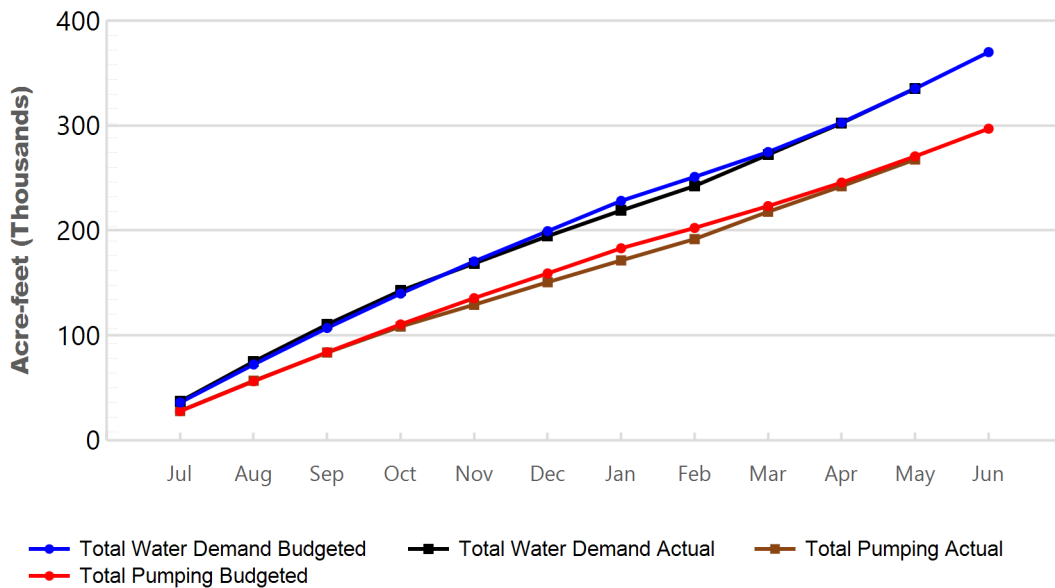
May 2026

INFLOWS & OUTFLOWS (acre-feet)	Total for Month	Year to Date -	
		This Year	Last Year
BASIN SUPPLIES			
Water Purchases from MWD (excludes In Lieu)	0	0	0
SAR & Santiago Creek Flows (accounts for storage to/from recharge facilities)	17,851	169,073	126,287
GWRS Water to Forebay	7,524	83,161	81,690
GWRS Water to Mid-Basin Injection Wells	491	5,860	6,391
GWRS Water to Talbert Barrier	1,164	15,195	16,750
OC-44 and F. Valley Water to Talbert Barrier	0	8	10
Alamitos Barrier Water	145	1,847	1,952
Incidental Recharge (estimated)	2,000	19,050	7,313
Evaporation from Recharge Basins	(407)	(3,265)	(2,971)
River Flow Lost to Ocean	0	(6,525)	(2,020)
Total Groundwater Recharge	28,768	284,404	235,403
GROUNDWATER PRODUCTION	25,560	267,707	275,410
BASIN BALANCE			
Change in Groundwater Storage	3,208	16,698	(40,007)
Accumulated Overdraft	----	166,307	173,011
OCWD IN LIEU PURCHASES (MWD CYCLIC STORAGE)	0	0	0
OTHER KEY INFORMATION			
1. MWD Water Deliveries to Producers	5,812	52,095	48,433
2. Achieved Basin Production Percentage (Current BPP - 85%)	81.5 %	83.7 %	85 %
3. Total Water Demand	33,138	335,428	343,238
4. Total GWRS Production	9,181	104,244	104,874
5. Green Acres Project Water	389	3,030	3,485
6. SAR Water Quality			
- Total Dissolved Solids (TDS) of SAR below Prado Dam (ppm)	662	----	320
- Total Nitrogen of SAR below Prado Dam (ppm)	6.2	----	2.4
7. Month-End Water Storage Behind Prado Dam	5	----	1
8. Month-End Water Storage in Recharge Facilities	16,261	----	12,602
9. Water Storage Change in Recharge Facilities	(9,673)	6,122	(5,880)
10. Total Artificial Recharge	26,768	265,354	228,090
11. Monthly Mean Temperature at Santa Ana Fire Station	69 °F	----	68.6 °F
12. Rainfall at FHQ (inches)	0	15.95	6.65

Orange County Sanitation District Influent Flows Report

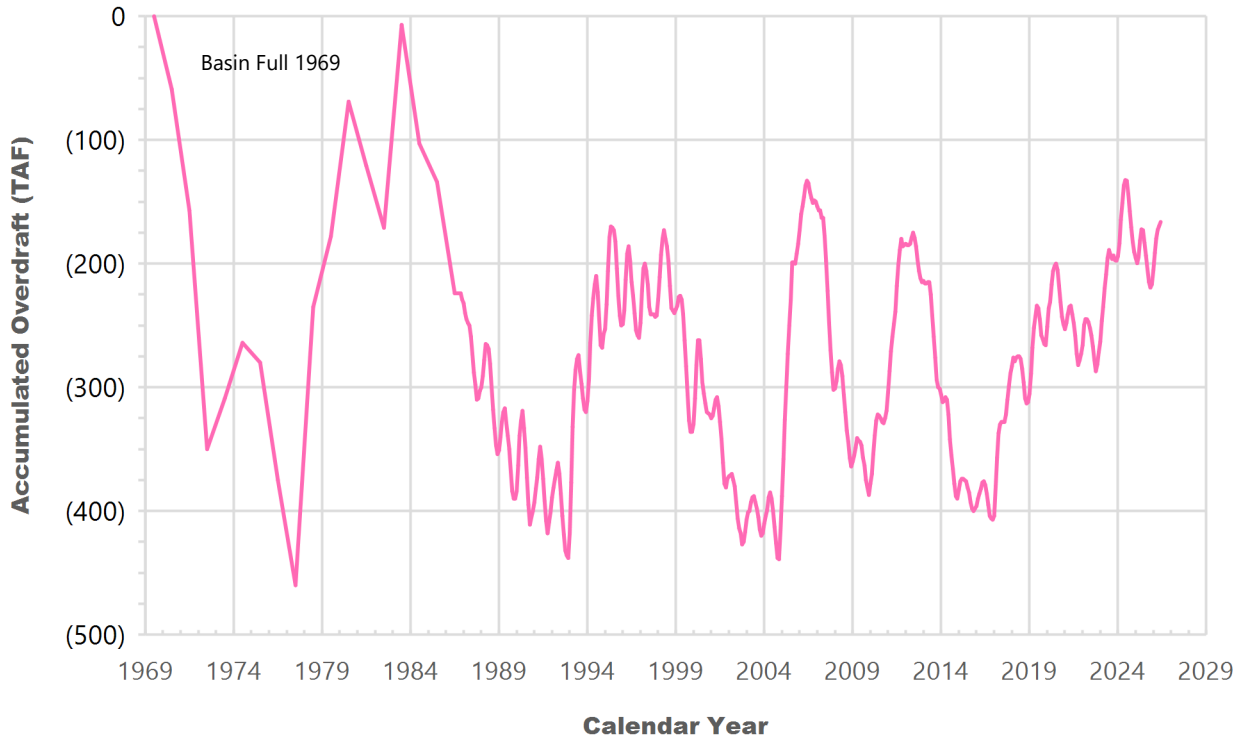


2025-26 Water Demands/Groundwater Pumping/RA Revenue Report

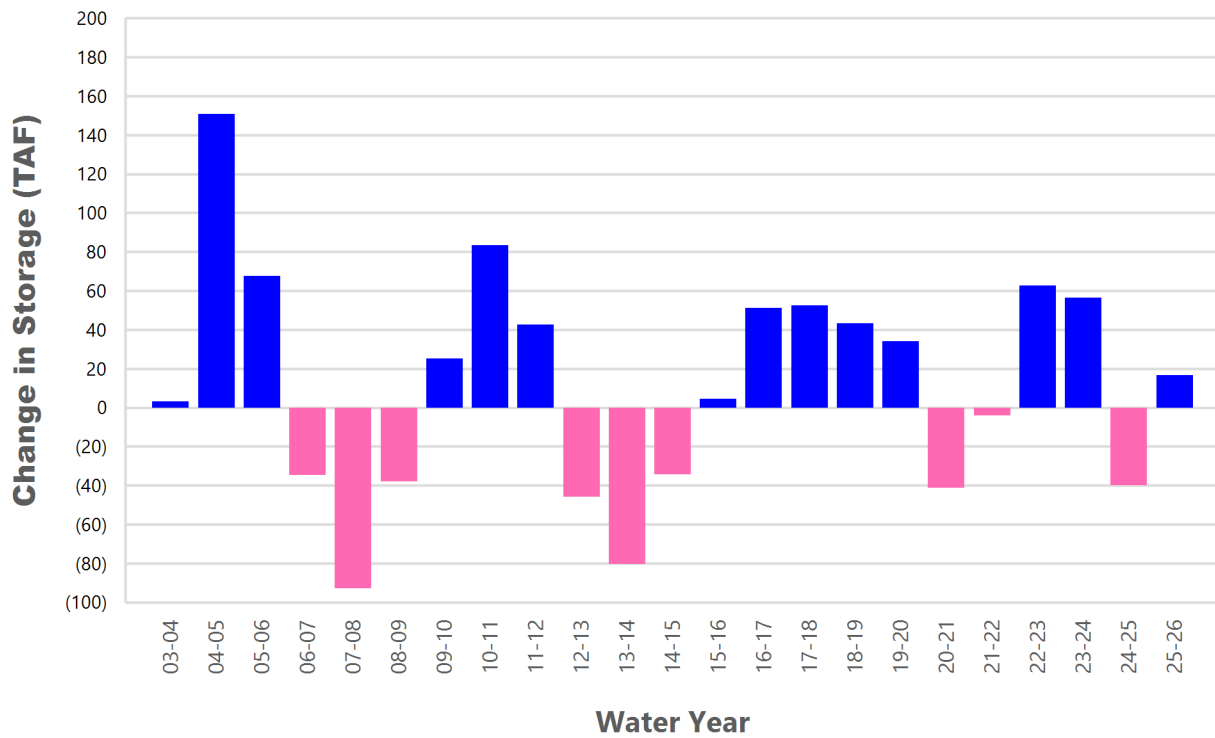


	Monthly		Accumulated Total for the Year			
	Budget	Actual	Budget	Actual	Difference	Percent
Total Water Demand	32,300	33,138	335,200	335,428	228	100.07 %
Total Pumping	25,100	25,560	270,700	267,706	(2,994)	98.89 %
RA Revenue	\$17,846,100	\$18,173,160	\$192,467,700	\$190,338,966	(\$2,128,734)	98.89 %

Accumulated Overdraft



YTD Change in Groundwater Storage in OCWD



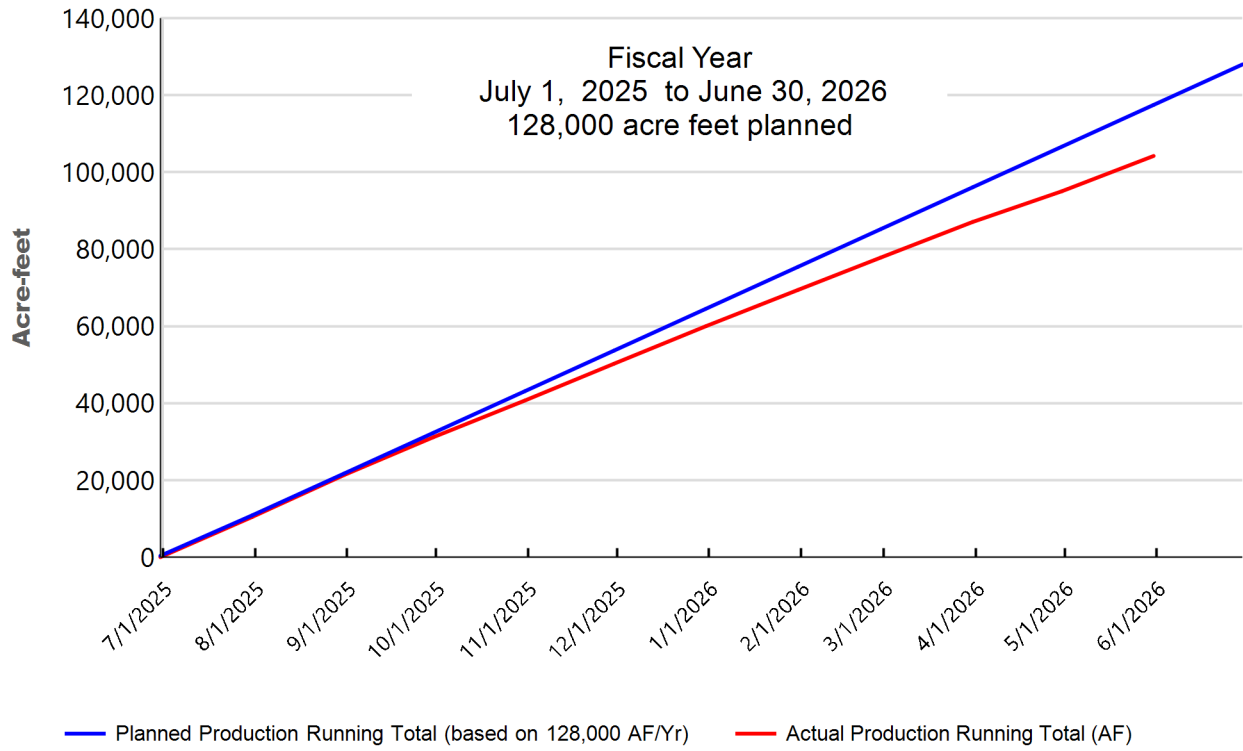
PRODUCERS WATER USAGE SUMMARY

May 2026

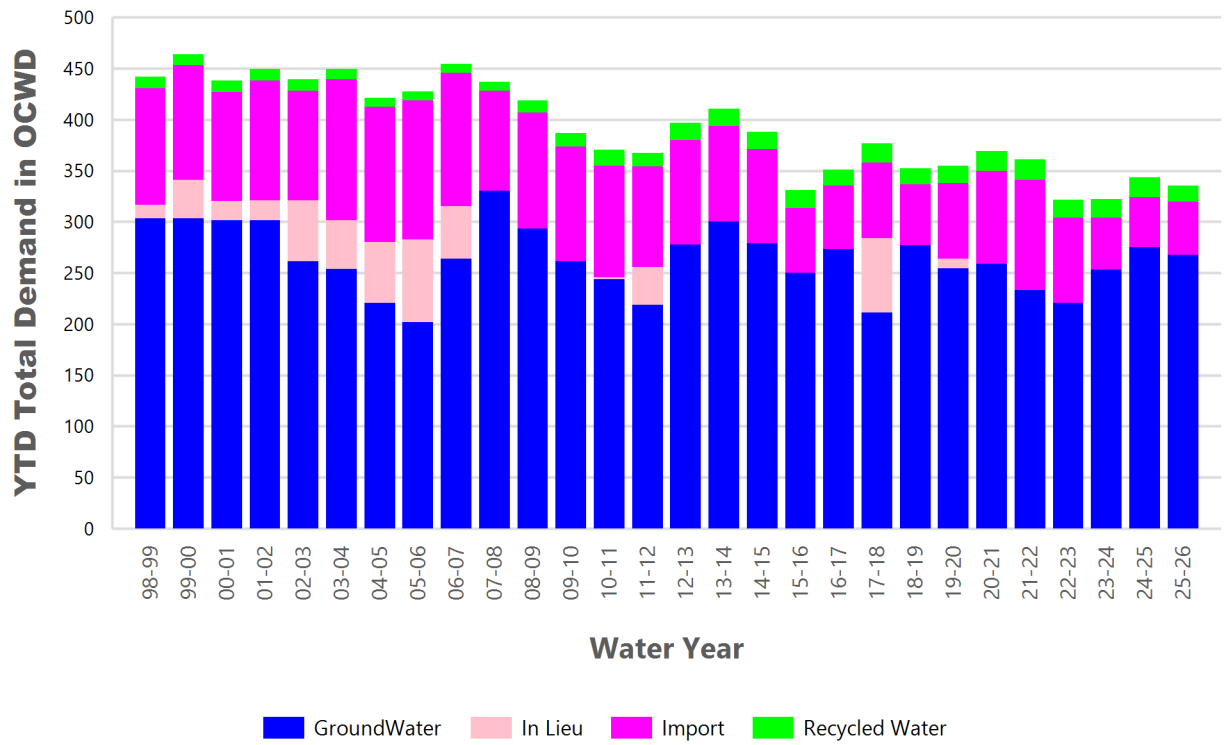
(units are acre-feet, unless percentage)

WATER AGENCY	Ground water	In Lieu	Reclaimed Water	Total Import	Total Demand	2025-26 YTD Demand	2024-25 YTD Demand	YTD % Diff Demand	May 2026 BPP	2025-26 YTD BPP	2024-25 YTD BPP
Anaheim	3,828	0	0	1,150	4,978	49,325	50,903	97 %	76.9 %	82.4 %	82.7 %
Buena Park	1,060	0	0	105	1,165	11,356	11,590	98 %	91 %	90.4 %	89.8 %
East Orange County	30	0	0	35	65	715	1,766	40 %	46.2 %	62.8 %	100 %
Fountain Valley	780	0	120	0	901	8,544	8,953	95 %	100 %	100 %	100 %
Fullerton	639	0	0	1,338	1,977	19,496	20,020	97 %	32.3 %	48 %	65.9 %
Garden Grove	1,524	0	0	385	1,909	19,030	19,462	98 %	79.8 %	84.7 %	92.8 %
Golden State	1,696	0	0	331	2,027	19,992	20,416	98 %	83.7 %	59.3 %	65.9 %
West OC System	1,138	-	-	73	1,211	12,096	12,247	99 %	na	na	na
East OC System	558	-	-	258	816	7,895	8,169	97 %	na	na	na
Huntington Beach	1,692	0	0	657	2,349	22,515	22,778	99 %	72 %	83.8 %	87.8 %
Irvine Ranch	2,967	0	1,487	37	4,491	52,631	54,543	96 %	98.8 %	99.2 %	98.6 %
DRWF Clear	1,600	-	-	-	1,600	24,393	22,483	108 %	na	na	na
DRWF Color	680	-	-	-	680	7,503	7,600	99 %	na	na	na
Laguna Beach	0	0	0	230	230	2,740	2,900	94 %	0 %	0 %	0 %
La Palma	150	0	0	2	153	1,504	1,507	100 %	98.6 %	99.7 %	97.2 %
Mesa Water (MW)	1,392	0	71	0	1,463	14,518	14,971	97 %	100 %	100 %	100 %
MW Clear	1,040	-	-	-	1,040	11,852	12,179	97 %	na	na	na
MW Amber	353	-	-	-	353	2,070	2,067	100 %	na	na	na
Newport Beach	892	0	57	372	1,320	12,260	12,591	97 %	70.6 %	83.3 %	86.4 %
Orange	2,190	0	0	308	2,498	23,825	22,932	104 %	87.7 %	81.7 %	79.7 %
OCWD (GAP)	138	0	0	0	138	1,384	1,370	101 %	100 %	100 %	100 %
Santa Ana	2,311	0	30	505	2,846	29,765	30,025	99 %	82.1 %	86.7 %	87.7 %
Seal Beach	339	0	0	0	339	3,553	3,562	100 %	99.9 %	99.8 %	89.3 %
Serrano	175	0	0	60	235	2,346	2,386	98 %	74.5 %	75.9 %	51.3 %
Tustin	935	0	0	1	936	9,388	8,368	112 %	99.9 %	91.4 %	64 %
Westminster	949	0	0	0	949	9,372	9,509	99 %	100 %	100 %	100 %
Yorba Linda	1,427	0	0	288	1,715	16,427	17,317	95 %	83.2 %	85.1 %	85.9 %
SUBTOTAL	25,114	0	1,766	5,804	32,683	330,684	337,869	98 %	81.2 %	83.5 %	84.8 %
Other Producers (Est ~2% of Subtotal)	447	0	0	7	454	4,744	5,369	88 %			
TOTAL	25,560	0	1,766	5,812	33,137	335,428	343,238	98 %	81.5 %	83.7 %	85 %
OCWD (Talbert Barrier)	0		1,164	0	1,164	15,195	16,750				
OCSD (GAP)	na		111	na	111	1,012	930				

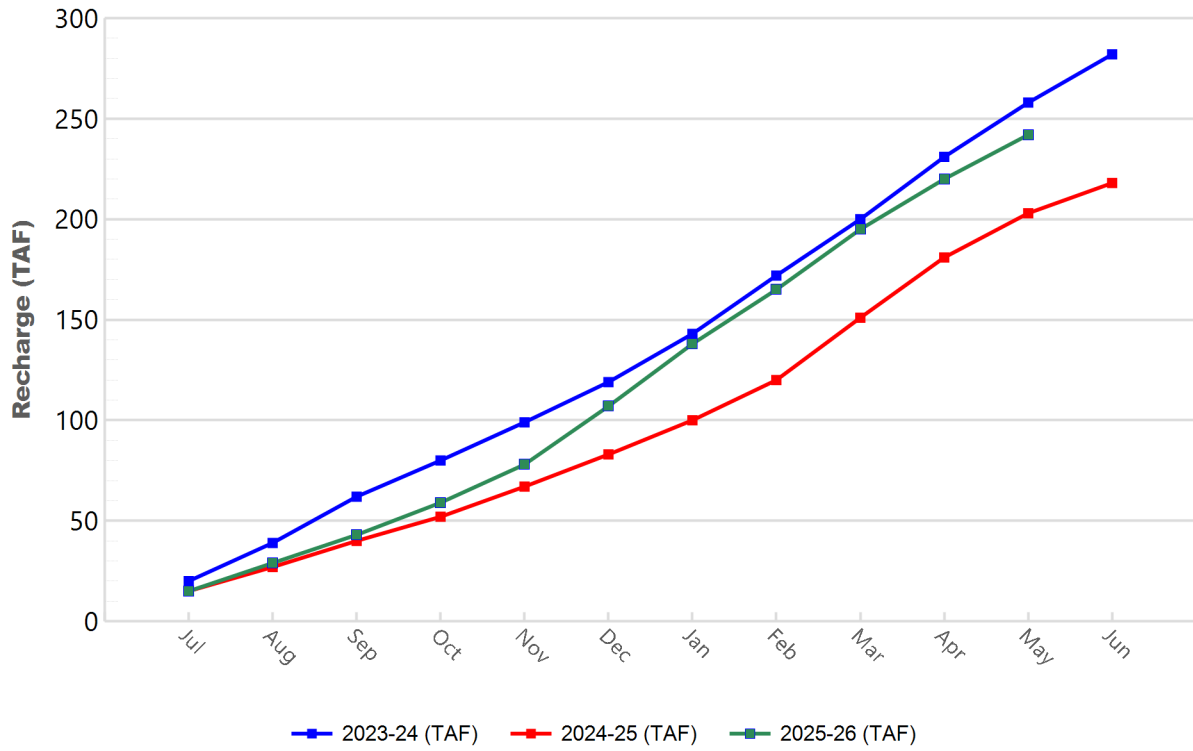
GWRS Actual Production to Target Production



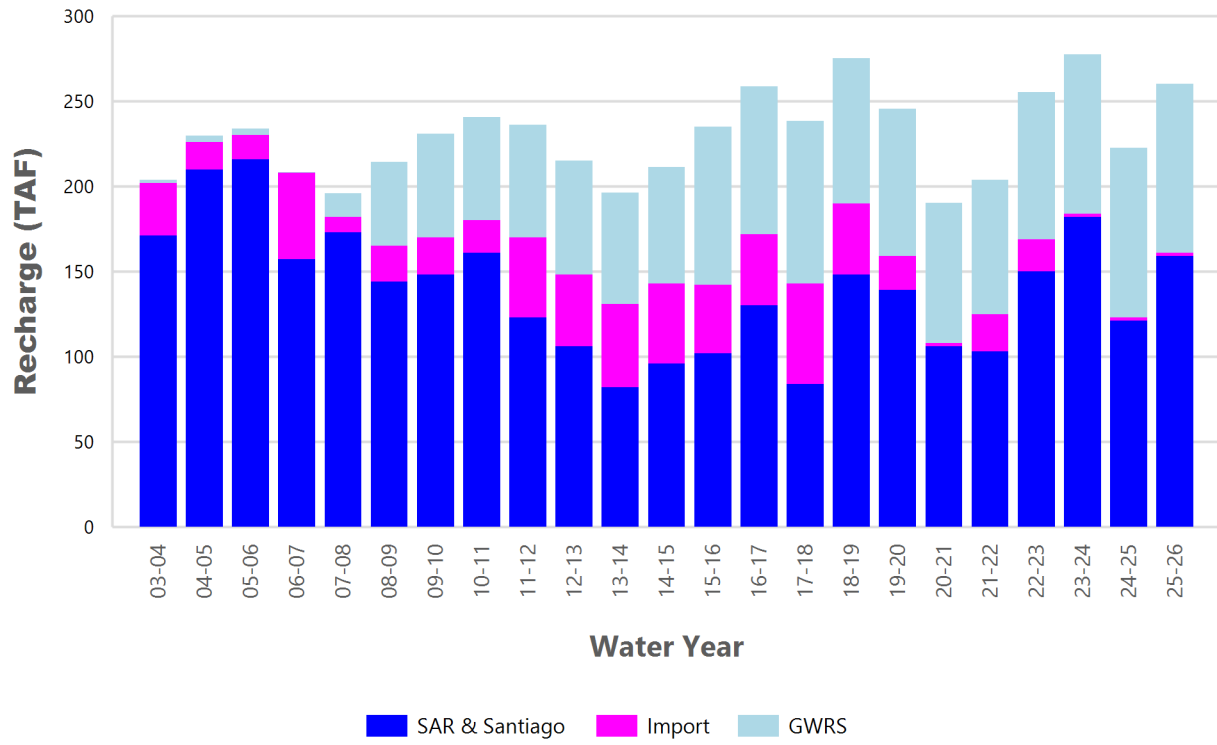
YTD Total Demand in OCWD



Annual Forebay Recharge



YTD Artificial Recharge by OCWD



RECHARGE AREAS REPORT

May 2026

	Percolation (AF)	Remarks
RIVER SYSTEM	5,400	88 cfs per day average perc
DESILTING SYSTEM	na	SAR
OFF-RIVER SYSTEM	1,153	SAR
WARNER SYSTEM	978	SAR
OLIVE BASIN	na	Passive System
ANAHEIM LAKE	296	SAR
MINI-ANA LAKE	0	
MILLER BASIN	843	SAR
KRAEMER BASIN	519	SAR
LA PALMA BASIN	4,581	GWRS
MIRALOMA BASIN	2,903	GWRS
LA JOLLA BASIN	495	SAR
PLACENTIA BASIN	279	SAR
RAYMOND BASIN	192	SAR
FIVE COVES BASIN	na	SAR
BURRIS BASIN	1,168	SAR; Santiago Barge pumping.
RIVER VIEW BASIN	215	SAR; Santiago Barge pumping.
FLETCHER BASIN	26	SAR; Santiago Barge pumping.
SANTIAGO BASINS	2,925	SAR
SANTIAGO CREEK	353	SAR; Santiago Barge pumping.
TOTALS	22,324	
5-YR AVERAGE	23,546	

FLOWS TO RECHARGE AREAS (AF)	
Imperial Headgates (estimated)	8,104
GWRS	7,525
OC-28 (MWD)	0
OC-28a (MWD)	0
OC-59	0
Est'd local Forebay inflow below Imperial	0
Est'd local Santiago inflow (estimated)	65
Irvine lake releases (OC-13 MWD)	0
Villa Park Dam releases (estimated)	0
Precip at Warner Basin (inches)	0.10
Precip direct to open water surfaces	9
TOTAL INFLOW	15,702

LOSSES FROM RECHARGE AREAS (AF)	
Est'd SAR flow past Chapman Ave.	0
Est'd Santiago Cr. flow to SAR	0
Est'd flows past Raymond Basin	0
Calc'd evap (inches) Estimated	5.12
Est'd evaporative losses	407
TOTAL LOSSES	407

STORAGE CHANGES (AF)			
Facility	Begin	End	Net
Deep basins	10,401	7,394	-3,006
Santiago Pits	12,890	8,867	-4,023
River			
Off-river			
Irvine Lake			
TOTAL	23,290	16,261	-7,029

SUMMARY (AF)	
TOTAL INFLOW	15,702
TOTAL LOSSES	407
STORAGE CHANGE	-7,029
CALC'D PERCOLATION	22,324

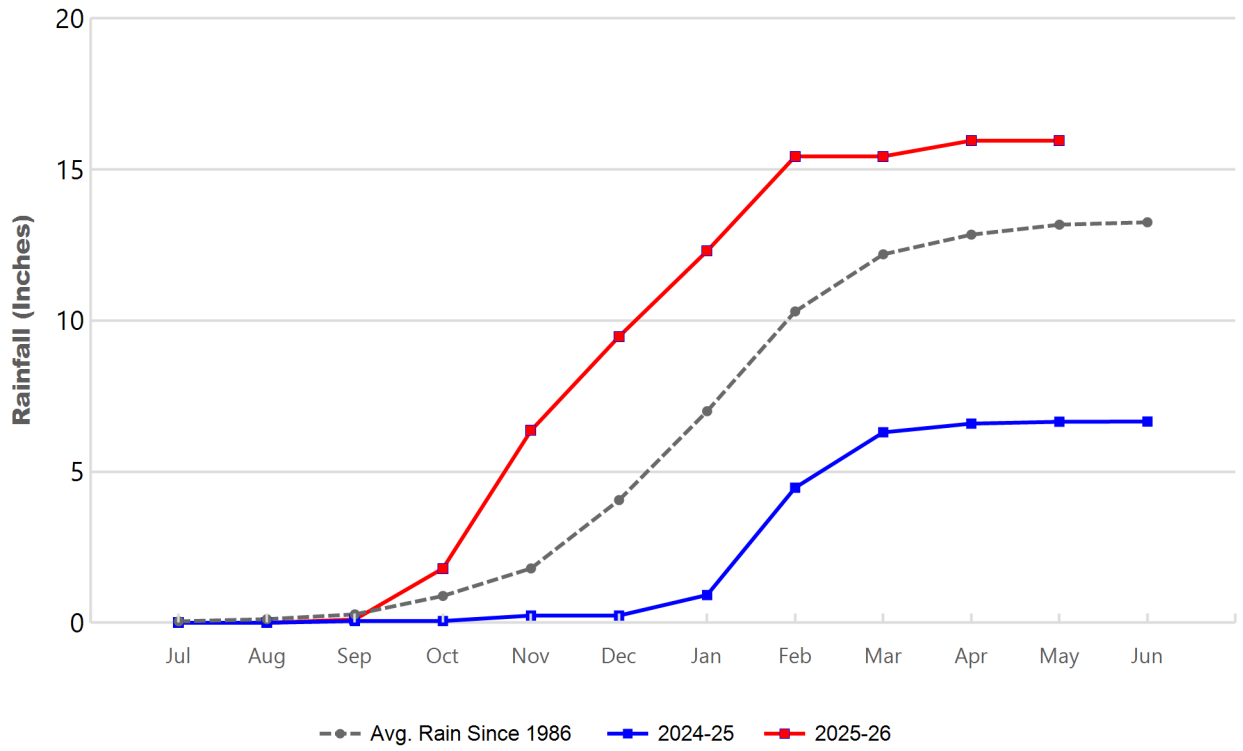
DEEP BASINS MONTHLY STATUS

May 2026

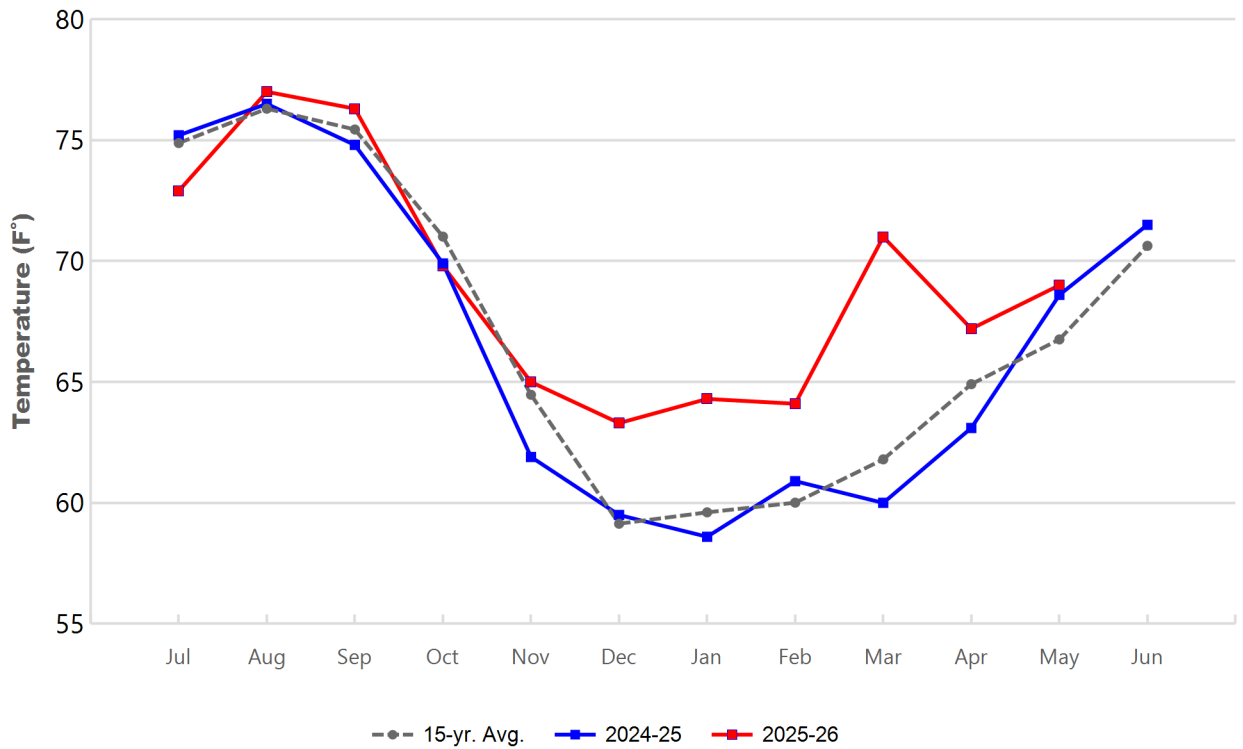
(values in acre-feet)

<i>Facility</i>	<i>Storage Start</i>	<i>Storage End</i>	<i>Maximum Storage</i>	<i>Total Perc</i>	<i>Max Perc</i>	<i>Avg Perc</i>	<i>Avg W.S. Elev</i>
Desilting Ponds	215	200	252	na	na	na	na
Fos-Huckleberry	532	531	628	na	na	na	na
Conrock Basin	552	553	661	na	na	na	na
Warner Basins	2,875	2,844	3,020	978	na	na	238
Olive Pit	47	38	95	na	na	na	210
Anaheim Lake	2,048	235	2,386	296	40	10	194
Mini-Anaheim Lk	0	0	44	0	0	0	220
Miller Basin	156	32	350	843	56	28	206
Kraemer Basin	1,128	80	1,142	519	59	17	192
La Palma Basin	20	51	101	4,581	184	148	215
Miraloma Basin	25	34	53	2,903	98	94	218
La Jolla Basin	15	17	20	495	29	16	202
Placentia Basin	70	114	260	279	35	9	172
Raymond Basin	75	122	260	192	13	6	151
Five Coves Basins	280	269	554	na	na	na	na
Burriss Pit	2,362	2,257	2,500	1,168	47	38	171
River View Basin	0	1	14	215	16	7	183
Fletcher Basin	0	18	24	26	3	1	182
Santiago (Bond)	7,992	5,916	8,312	2,925	132	96	269
Santiago (Blu Dia)	4,897	2,951	5,259	-	-	-	-
Totals	23,290	16,261	25,934	15,418			
Prado Dam	8	5	25,374				

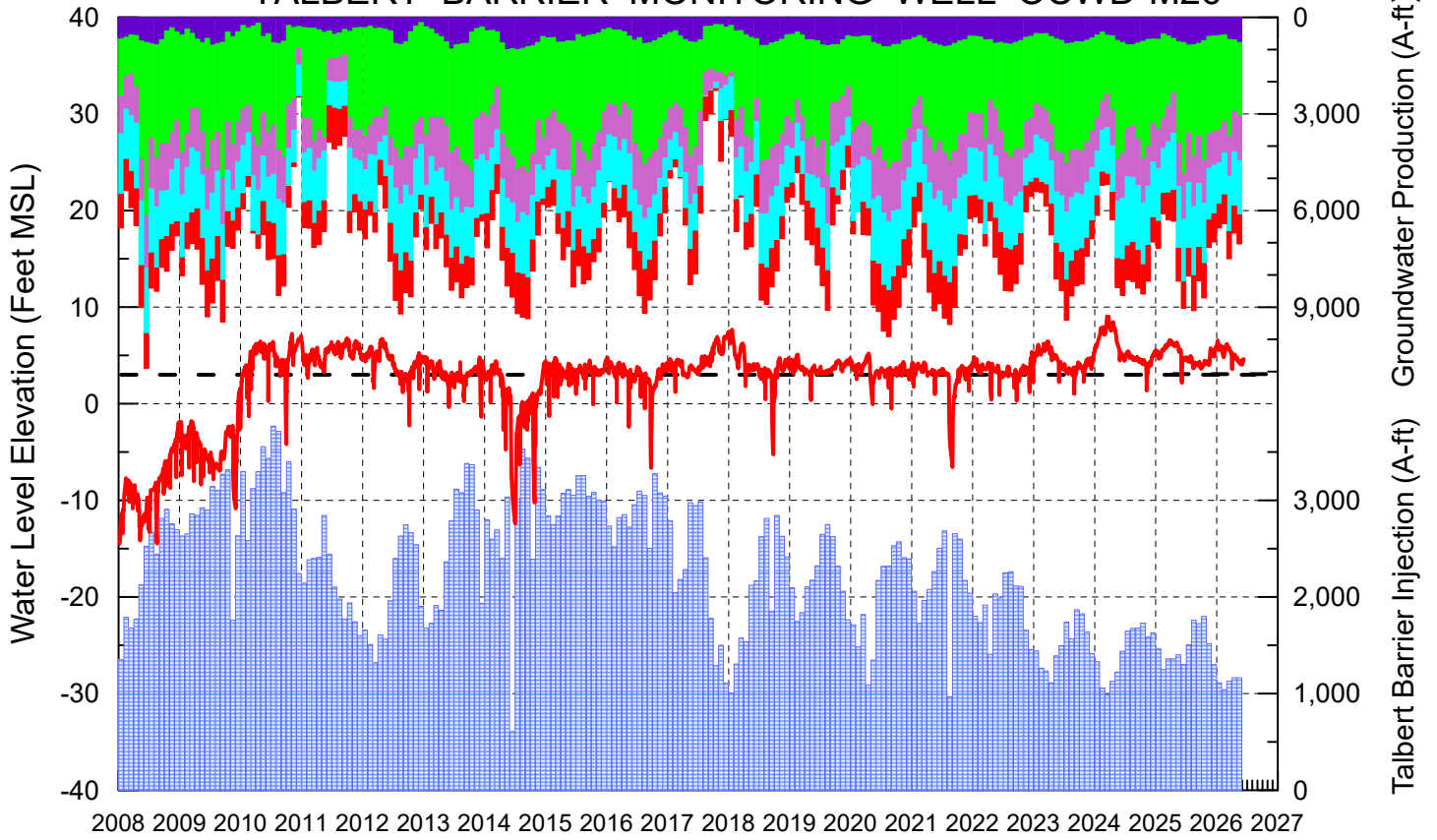
Cumulative Anaheim Field HQ Rainfall



Temperature at Santa Ana Fire Station



TALBERT BARRIER MONITORING WELL OCWD-M26



- Talbert/Lambda Aquifer Mergence Zone Perforated Interval: 71 - 135 ft. bgs
- ▨ Talbert Barrier Injection
- - - Protective Level to Prevent Seawater Intrusion
- ▨ Fountain Valley Groundwater Production
- ▨ IRWD Groundwater Production
- ▨ Mesa Water Groundwater Production
- ▨ Huntington Beach Groundwater Production
- ▨ Newport Beach Groundwater Production

