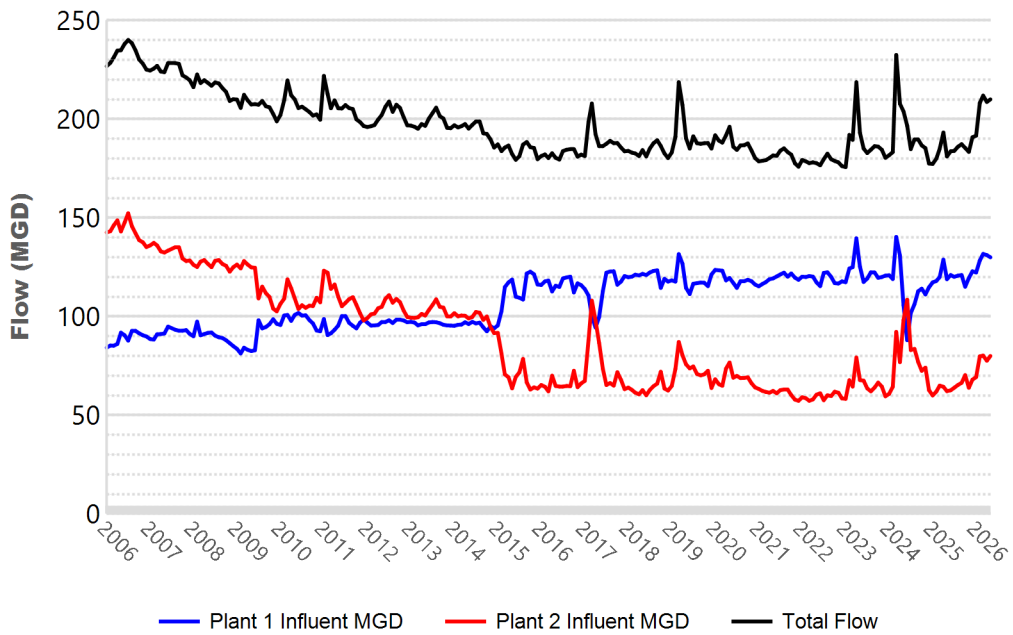


WATER RESOURCES SUMMARY

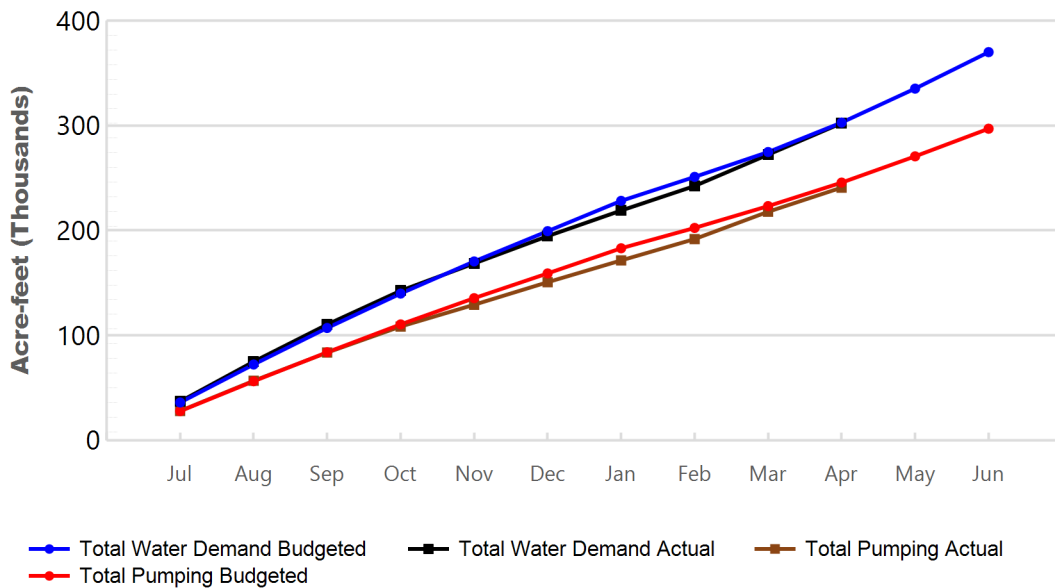
April 2026

INFLOWS & OUTFLOWS (acre-feet)	Total for Month	Year to Date -	
		This Year	Last Year
BASIN SUPPLIES			
Water Purchases from MWD (excludes In Lieu)	0	0	0
SAR & Santiago Creek Flows (accounts for storage to/from recharge facilities)	17,191	151,222	112,291
GWRS Water to Forebay	6,351	75,637	72,880
GWRS Water to Mid-Basin Injection Wells	437	5,370	5,838
GWRS Water to Talbert Barrier	1,157	14,032	15,350
OC-44 and F. Valley Water to Talbert Barrier	6	8	10
Alamitos Barrier Water	150	1,768	1,863
Incidental Recharge (estimated)	2,800	17,050	7,013
Evaporation from Recharge Basins	(436)	(2,859)	(2,613)
River Flow Lost to Ocean	(133)	(6,525)	(2,020)
Total Groundwater Recharge	27,524	255,703	210,612
GROUNDWATER PRODUCTION	23,011	240,853	249,945
BASIN BALANCE			
Change in Groundwater Storage	4,513	14,850	(39,332)
Accumulated Overdraft	----	168,155	172,337
OCWD IN LIEU PURCHASES (MWD CYCLIC STORAGE)	0	0	0
OTHER KEY INFORMATION			
1. MWD Water Deliveries to Producers	5,785	47,558	42,658
2. Achieved Basin Production Percentage (Current BPP - 85%)	79.9 %	83.5 %	85.4 %
3. Total Water Demand	30,001	302,271	310,095
4. Total GWRS Production	7,947	95,063	94,109
5. Green Acres Project Water	320	2,641	3,101
6. SAR Water Quality			
- Total Dissolved Solids (TDS) of SAR below Prado Dam (ppm)	556	----	556
- Total Nitrogen of SAR below Prado Dam (ppm)	2.7	----	4.6
7. Month-End Water Storage Behind Prado Dam	25,374	----	1
8. Month-End Water Storage in Recharge Facilities	25,934	----	17,204
9. Water Storage Change in Recharge Facilities	1,013	15,795	(1,278)
10. Total Artificial Recharge	24,724	238,653	203,599
11. Monthly Mean Temperature at Santa Ana Fire Station	67.2 °F	----	63.1 °F
12. Rainfall at FHQ (inches)	0.52	15.95	6.59

Orange County Sanitation District Influent Flows Report

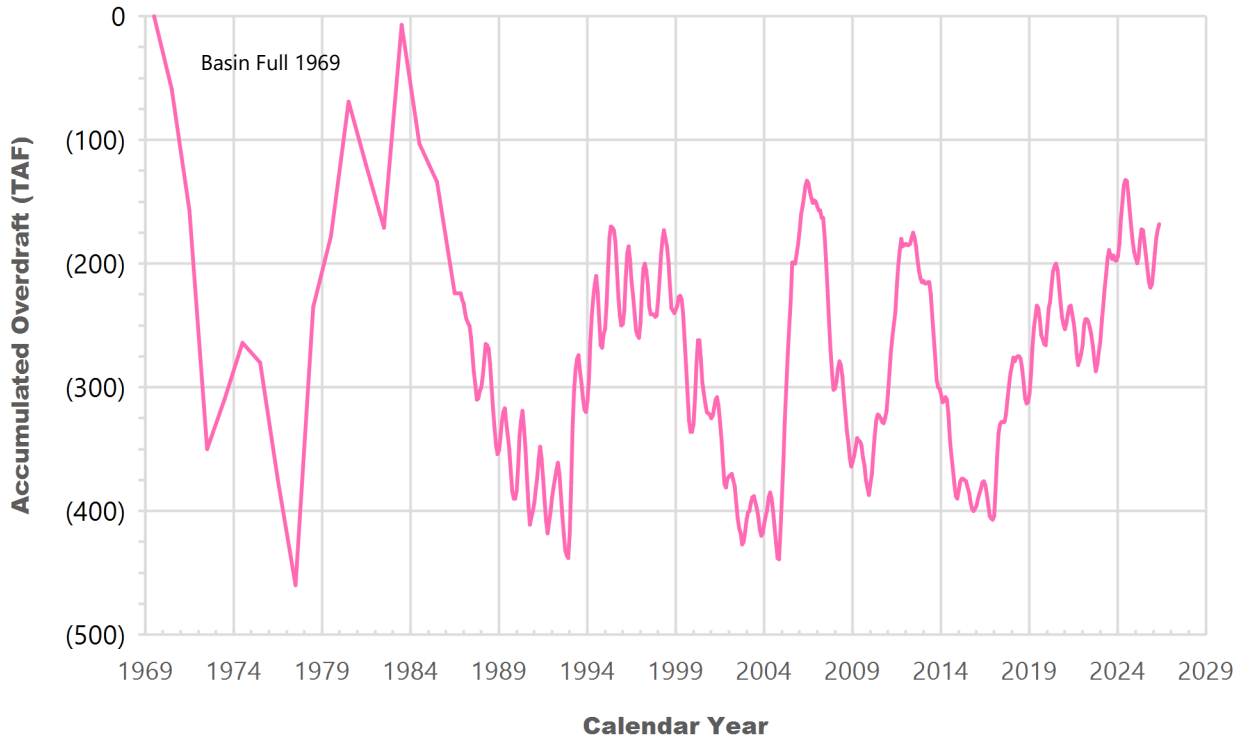


2025-26 Water Demands/Groundwater Pumping/RA Revenue Report

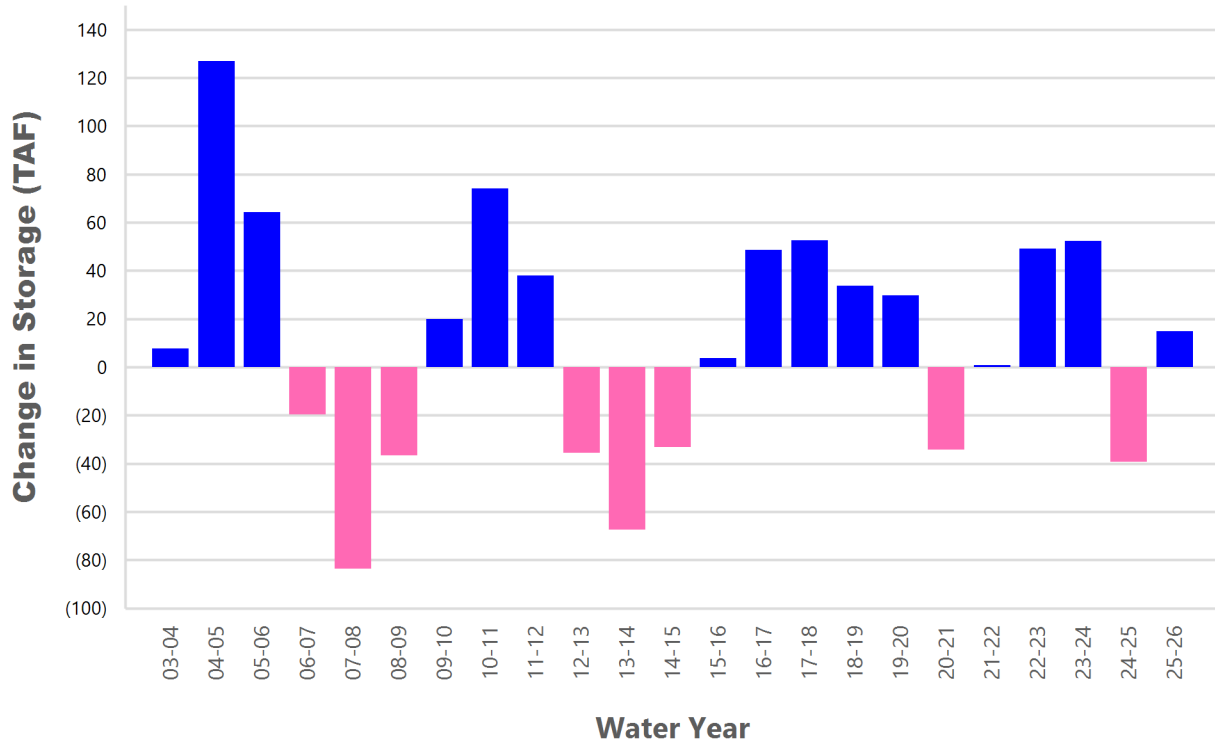


	Monthly		Accumulated Total for the Year			
	Budget	Actual	Budget	Actual	Difference	Percent
Total Water Demand	28,100	30,001	302,900	302,271	(629)	99.79 %
Total Pumping	22,400	23,011	245,600	240,853	(4,747)	98.07 %
RA Revenue	\$15,926,400	\$16,360,821	\$174,621,600	\$171,246,483	(\$3,375,117)	98.07 %

Accumulated Overdraft



YTD Change in Groundwater Storage in OCWD



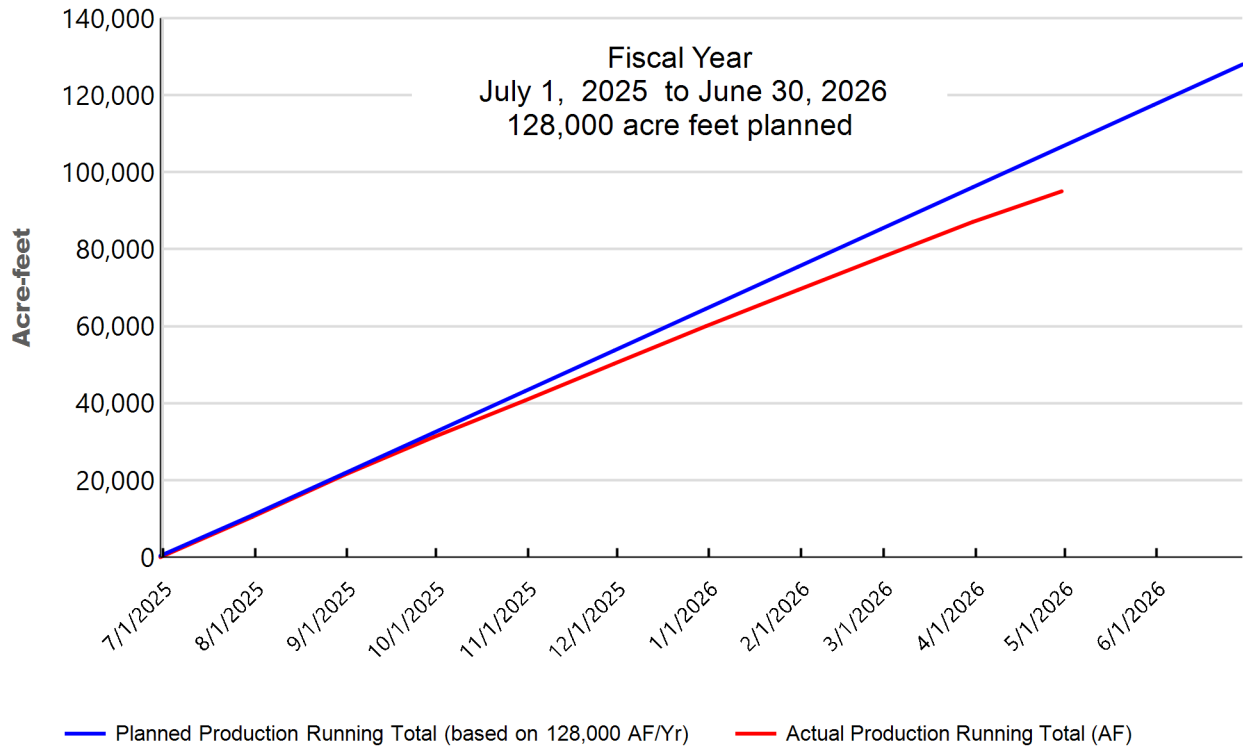
PRODUCERS WATER USAGE SUMMARY

April 2026

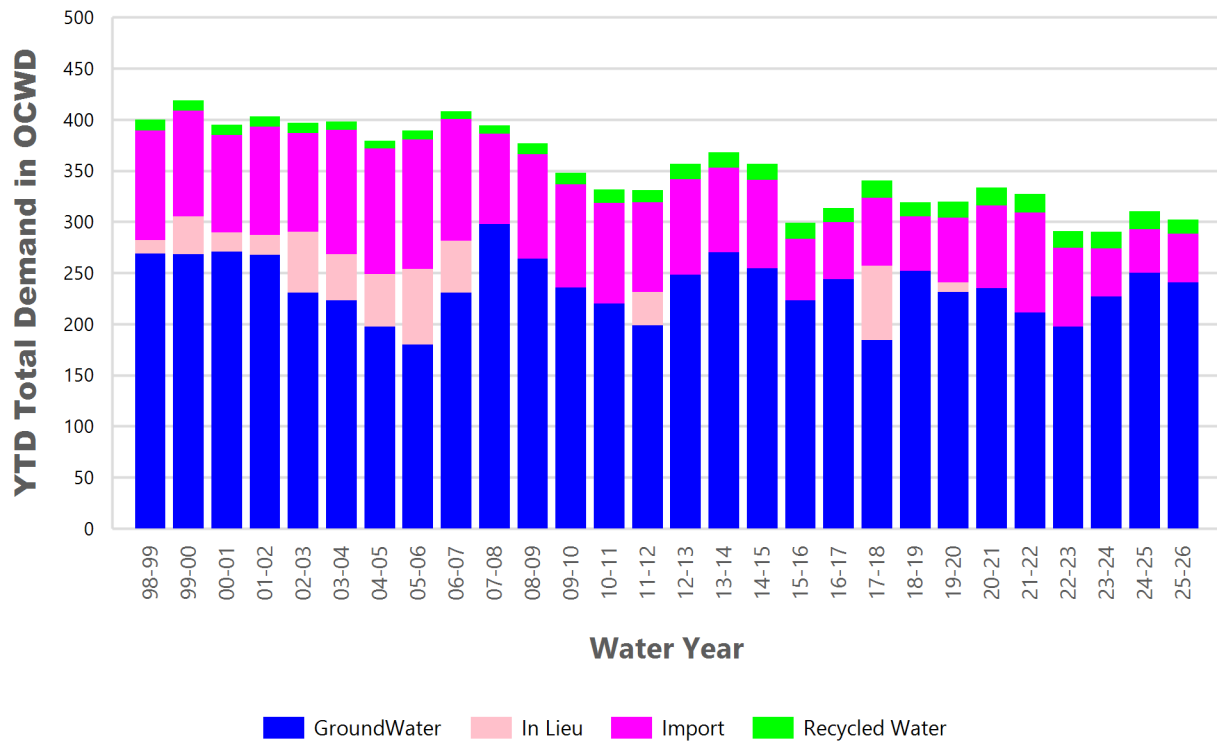
(units are acre-feet, unless percentage)

WATER AGENCY	Ground water	In Lieu	Reclaimed Water	Total Import	Total Demand	2025-26 YTD Demand	2024-25 YTD Demand	YTD % Diff Demand	Apr 2026 BPP	2025-26 YTD BPP	2024-25 YTD BPP
Anaheim	3,589	0	0	810	4,399	44,347	46,267	96 %	81.6 %	83.1 %	82.4 %
Buena Park	913	0	0	133	1,046	10,191	10,453	97 %	87.3 %	90.3 %	89 %
East Orange County	35	0	0	30	65	650	1,588	41 %	53.8 %	65.6 %	100 %
Fountain Valley	697	0	92	0	790	7,643	8,091	94 %	100 %	100 %	100 %
Fullerton	749	0	0	1,075	1,824	17,519	18,063	97 %	41.1 %	49.7 %	67.9 %
Garden Grove	1,501	0	0	271	1,772	17,121	17,603	97 %	84.7 %	85.2 %	94.5 %
Golden State	1,565	0	0	300	1,866	17,965	18,453	97 %	83.9 %	56.5 %	66.6 %
West OC System	1,054	-	-	76	1,130	10,886	11,050	99 %	na	na	na
East OC System	512	-	-	224	736	7,080	7,403	96 %	na	na	na
Huntington Beach	401	0	0	1,679	2,080	20,166	20,510	98 %	19.3 %	78.9 %	88.2 %
Irvine Ranch	2,921	0	998	60	3,979	48,141	48,895	98 %	98 %	99.2 %	98.6 %
DRWF Clear	1,551	-	-	-	1,551	22,793	20,049	114 %	na	na	na
DRWF Color	672	-	-	-	672	6,823	6,885	99 %	na	na	na
Laguna Beach	0	0	0	251	251	2,510	2,626	96 %	0 %	0 %	0 %
La Palma	138	0	0	0	138	1,351	1,359	99 %	99.7 %	99.9 %	100 %
Mesa Water (MW)	1,265	0	49	0	1,313	13,055	13,545	96 %	100 %	100 %	100 %
MW Clear	1,084	-	-	-	1,084	10,813	11,189	97 %	na	na	na
MW Amber	181	-	-	-	181	1,718	1,706	101 %	na	na	na
Newport Beach	836	0	40	270	1,146	10,939	11,399	96 %	75.6 %	84.8 %	86.1 %
Orange	2,174	0	0	166	2,340	21,327	20,695	103 %	92.9 %	81 %	81.5 %
OCWD (GAP)	150	0	0	0	150	1,247	1,237	101 %	100 %	100 %	100 %
Santa Ana	2,210	0	27	489	2,725	26,919	27,171	99 %	81.9 %	87.2 %	87.5 %
Seal Beach	323	0	0	0	324	3,214	3,210	100 %	99.9 %	99.8 %	88.1 %
Serrano	219	0	0	(12)	207	2,111	2,148	98 %	105.9 %	76 %	53.5 %
Tustin	852	0	0	2	854	8,453	7,537	112 %	99.8 %	90.5 %	65.3 %
Westminster	831	0	0	0	831	8,423	8,621	98 %	100 %	100 %	100 %
Yorba Linda	1,240	0	0	253	1,493	14,712	15,645	94 %	83 %	85.3 %	86.2 %
SUBTOTAL	22,609	0	1,205	5,777	29,592	298,003	305,118	98 %	79.6 %	83.3 %	85.2 %
Other Producers (Est ~2% of Subtotal)	402	0	0	7	409	4,269	4,977	86 %			
TOTAL	23,011	0	1,205	5,785	30,001	302,271	310,095	97 %	79.9 %	83.5 %	85.4 %
OCWD (Talbert Barrier)	0		1,157	0	1,157	14,032	15,350				
OCSD (GAP)	na		112	na	112	901	808				

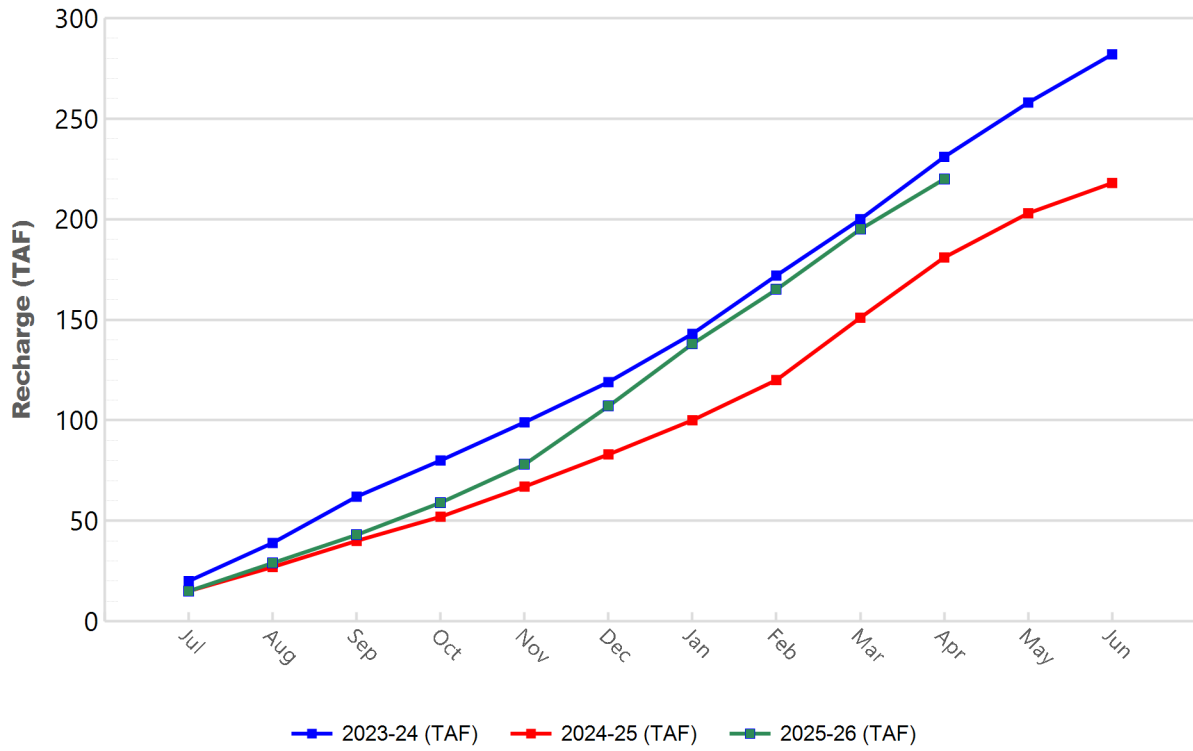
GWRS Actual Production to Target Production



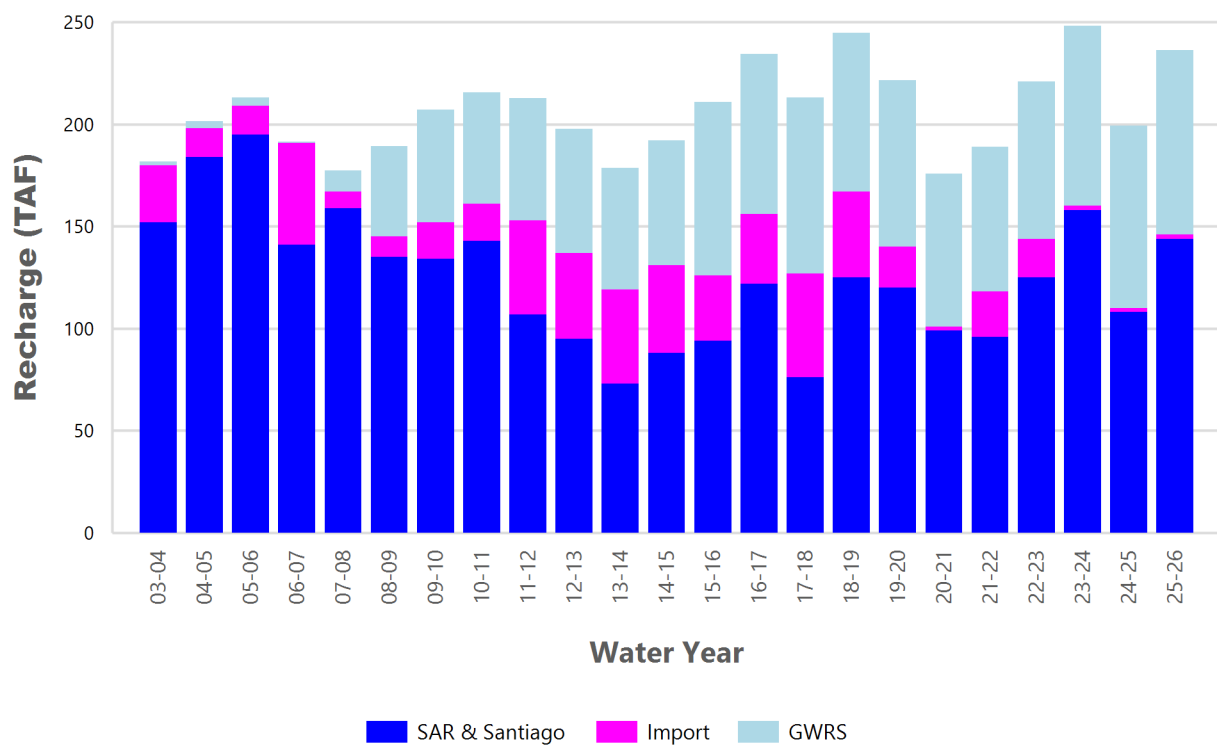
YTD Total Demand in OCWD



Annual Forebay Recharge



YTD Artificial Recharge by OCWD



RECHARGE AREAS REPORT

April 2026

	Percolation (AF)	Remarks
RIVER SYSTEM	5,301	89 cfs per day average perc
DESILTING SYSTEM	na	SAR
OFF-RIVER SYSTEM	1,317	SAR
WARNER SYSTEM	920	SAR
OLIVE BASIN	na	Passive System
ANAHEIM LAKE	1,790	SAR
MINI-ANA LAKE	142	SAR
MILLER BASIN	2,410	GWRS
KRAEMER BASIN	2,097	GWRS, SAR
LA PALMA BASIN	1,953	GWRS
MIRALOMA BASIN	1,204	GWRS
LA JOLLA BASIN	661	SAR
PLACENTIA BASIN	612	SAR
RAYMOND BASIN	317	SAR
FIVE COVES BASIN	na	SAR
BURRIS BASIN	1,548	SAR
RIVER VIEW BASIN	34	SAR, Burris Pumping
FLETCHER BASIN	40	SAR, Burris Pumping, Local runoff
SANTIAGO BASINS	5,021	SAR, Burris Pumping, Local runoff
SANTIAGO CREEK	252	SAR, Burris Pumping
TOTALS	25,618	
5-YR AVERAGE	25,615	

FLOWS TO RECHARGE AREAS (AF)	
Imperial Headgates (estimated)	17,794
GWRS	6,351
OC-28 (MWD)	0
OC-28a (MWD)	0
OC-59	0
Est'd local Forebay inflow below Imperial	213
Est'd local Santiago inflow (estimated)	153
Irvine lake releases (OC-13 MWD)	0
Villa Park Dam releases (estimated)	0
Precip at Warner Basin (inches)	0.52
Precip direct to open water surfaces	45
TOTAL INFLOW	24,556

LOSSES FROM RECHARGE AREAS (AF)	
Est'd SAR flow past Chapman Ave.	133
Est'd Santiago Cr. flow to SAR	0
Est'd flows past Raymond Basin	0
Calc'd evap (inches) Estimated	5
Est'd evaporative losses	436
TOTAL LOSSES	569

STORAGE CHANGES (AF)			
Facility	Begin	End	Net
Deep basins	11,257	10,401	-857
Santiago Pits	13,664	12,890	-774
River			
Off-river			
Irvine Lake			
TOTAL	24,921	23,290	-1,631

SUMMARY (AF)	
TOTAL INFLOW	24,556
TOTAL LOSSES	569
STORAGE CHANGE	-1,631
CALC'D PERCOLATION	25,618

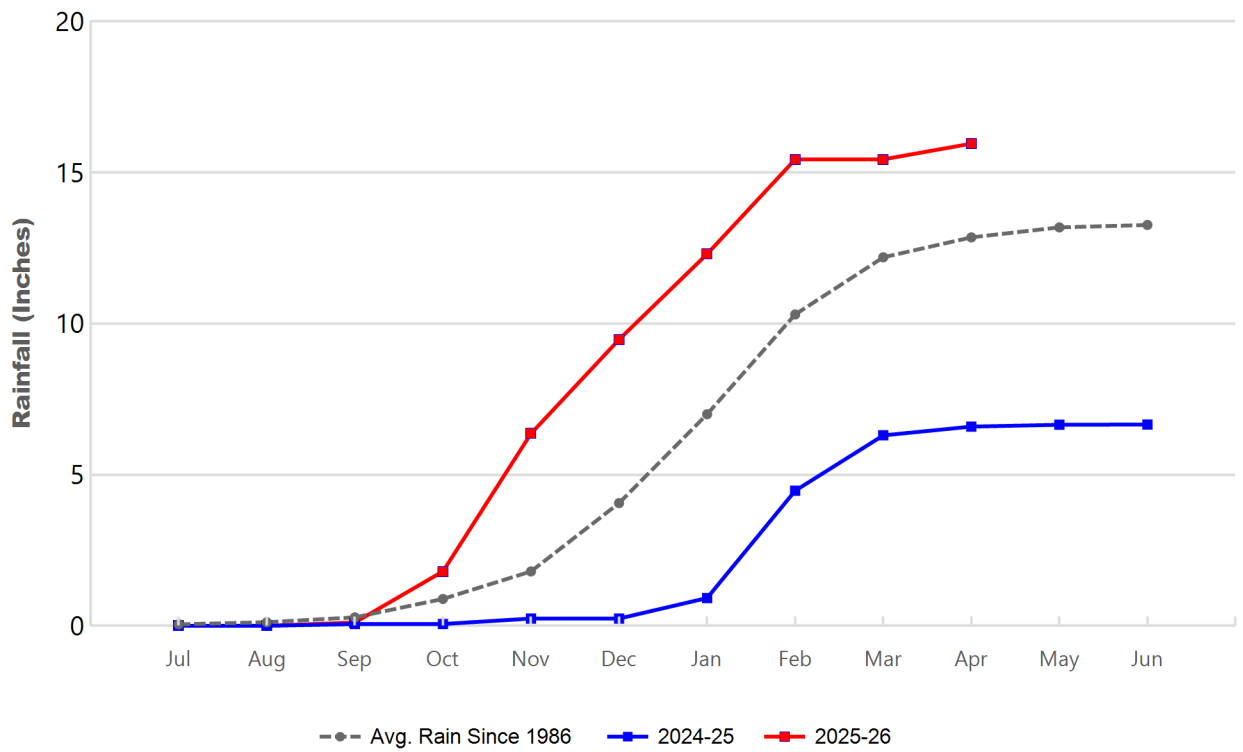
DEEP BASINS MONTHLY STATUS

April 2026

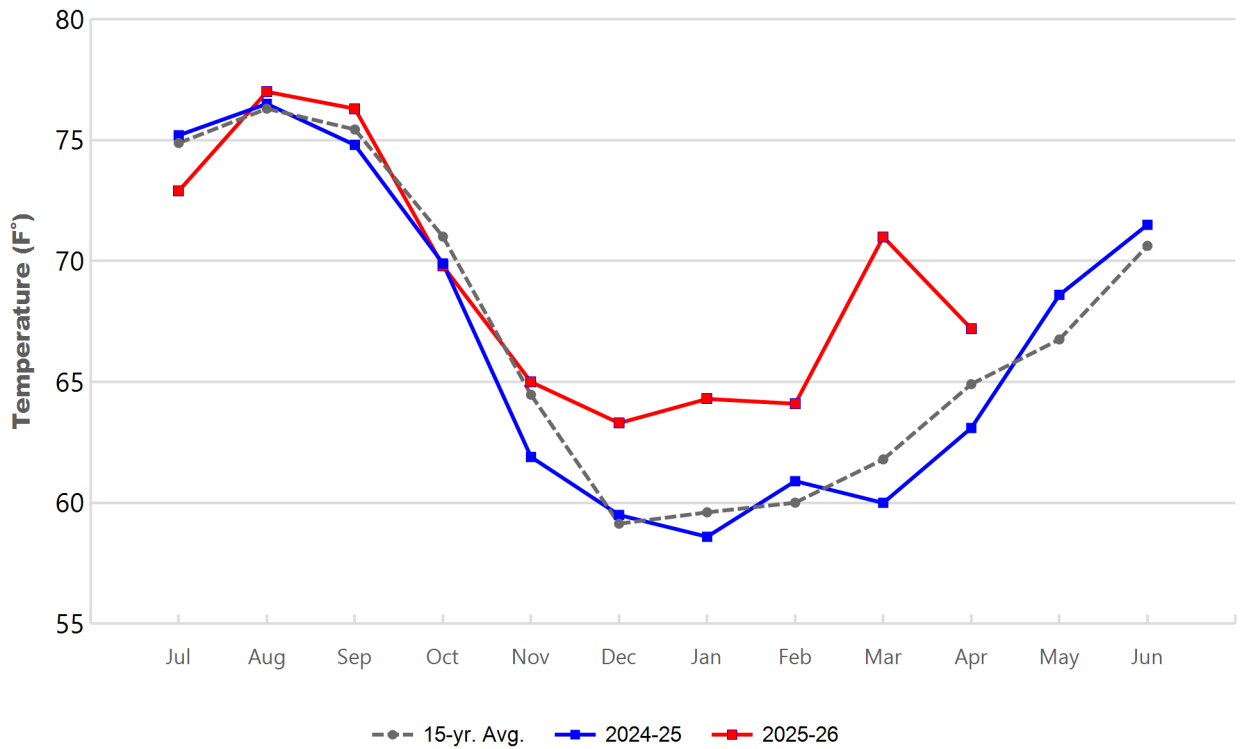
(values in acre-feet)

<i>Facility</i>	<i>Storage Start</i>	<i>Storage End</i>	<i>Maximum Storage</i>	<i>Total Perc</i>	<i>Max Perc</i>	<i>Avg Perc</i>	<i>Avg W.S. Elev</i>
Desilting Ponds	230	215	252	na	na	na	na
Fos-Huckleberry	569	532	628	na	na	na	na
Conrock Basin	589	552	661	na	na	na	na
Warner Basins	2,973	2,875	3,020	920	na	na	239
Olive Pit	63	47	95	na	na	na	215
Anaheim Lake	2,368	2,048	2,386	1,790	77	61	223
Mini-Anaheim Lk	24	0	44	142	9	5	227
Miller Basin	81	156	350	2,410	111	80	216
Kraemer Basin	1,122	1,128	1,142	2,097	86	70	219
La Palma Basin	92	20	101	1,953	129	65	215
Miraloma Basin	53	25	53	1,204	86	40	214
La Jolla Basin	0	15	20	661	44	22	201
Placentia Basin	101	70	260	612	63	21	170
Raymond Basin	168	75	260	317	23	11	149
Five Coves Basins	324	280	554	na	na	na	na
Burris Pit	2,473	2,362	2,500	1,548	66	53	171
River View Basin	8	0	14	34	2	1	185
Fletcher Basin	20	0	24	40	3	1	187
Santiago (Bond)	8,350	7,992	8,312	5,021	192	171	285
Santiago (Blu Dia)	5,313	4,897	5,259	-	-	-	-
Totals	24,921	23,290	25,934	18,749			
Prado Dam	6,421	8	25,374				

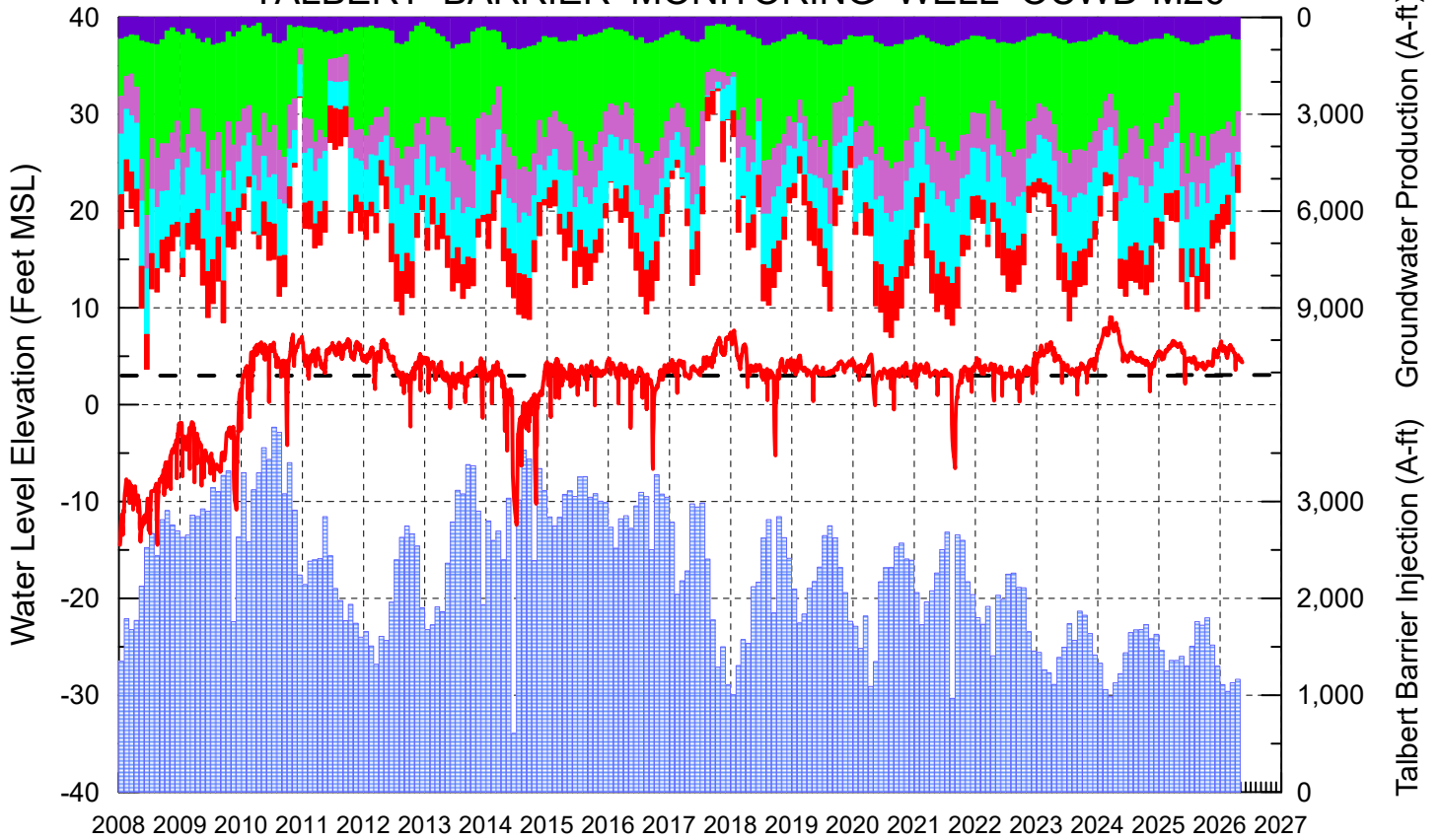
Cumulative Anaheim Field HQ Rainfall



Temperature at Santa Ana Fire Station



TALBERT BARRIER MONITORING WELL OCWD-M26



- Talbert/Lambda Aquifer Mergence Zone Perforated Interval: 71 - 135 ft. bgs
- ▨ Talbert Barrier Injection
- Protective Level to Prevent Seawater Intrusion
- ▨ Fountain Valley Groundwater Production
- ▨ IRWD Groundwater Production
- ▨ Mesa Water Groundwater Production
- ▨ Huntington Beach Groundwater Production
- ▨ Newport Beach Groundwater Production

