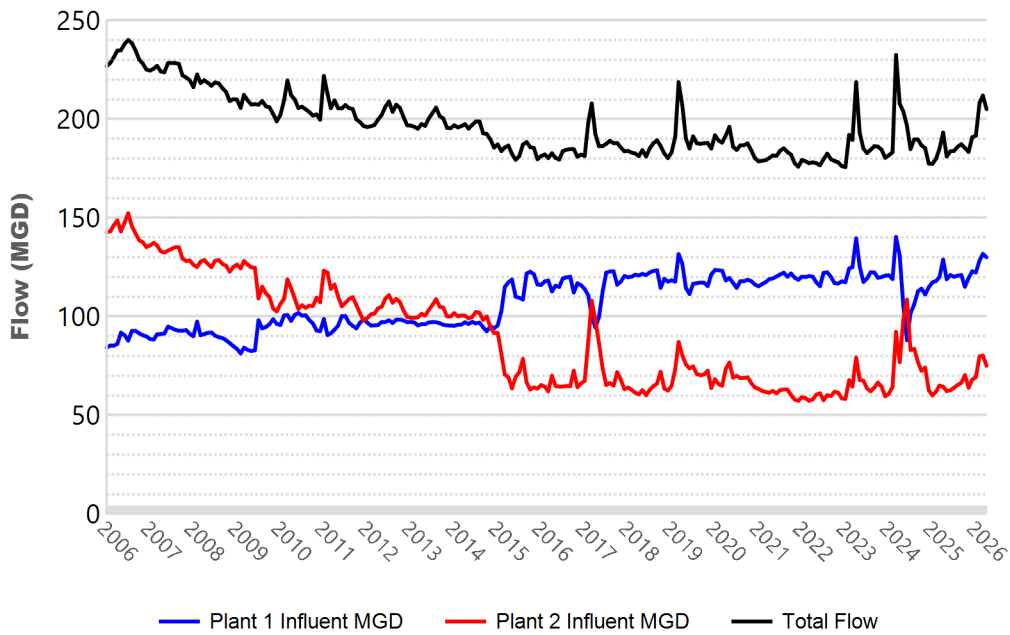


# WATER RESOURCES SUMMARY

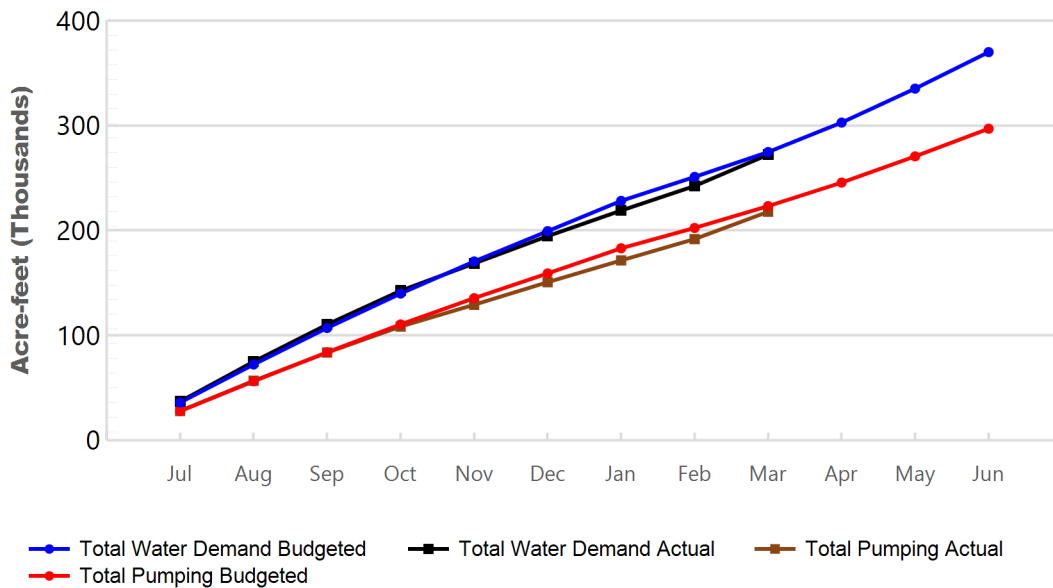
## March 2026

INFLOWS & OUTFLOWS (acre-feet)	Total for Month	Year to Date -	
		This Year	Last Year
<b>BASIN SUPPLIES</b>			
Water Purchases from MWD (excludes In Lieu)	0	0	0
SAR & Santiago Creek Flows (accounts for storage to/from recharge facilities)	22,296	134,031	90,602
GWRS Water to Forebay	7,624	69,286	64,838
GWRS Water to Mid-Basin Injection Wells	494	4,933	5,332
GWRS Water to Talbert Barrier	1,128	12,875	13,992
OC-44 and F. Valley Water to Talbert Barrier	0	2	10
Alamitos Barrier Water	12	1,618	1,817
Incidental Recharge (estimated)	1,800	14,250	6,413
Evaporation from Recharge Basins	(324)	(2,423)	(2,207)
River Flow Lost to Ocean	0	(6,392)	(1,966)
<b>Total Groundwater Recharge</b>	<b>33,031</b>	<b>228,179</b>	<b>178,831</b>
<b>GROUNDWATER PRODUCTION</b>	<b>26,027</b>	<b>217,830</b>	<b>227,137</b>
<b>BASIN BALANCE</b>			
Change in Groundwater Storage	7,004	10,349	(48,306)
Accumulated Overdraft	----	172,655	181,310
<b>OCWD IN LIEU PURCHASES (MWD CYCLIC STORAGE)</b>	<b>0</b>	<b>0</b>	<b>0</b>
<b>OTHER KEY INFORMATION</b>			
1. MWD Water Deliveries to Producers	3,180	41,776	38,478
2. Achieved Basin Production Percentage (Current BPP - 85%)	89.1 %	83.9 %	85.5 %
3. Total Water Demand	29,871	272,261	281,339
4. Total GWRS Production	9,250	87,116	84,200
5. Green Acres Project Water	296	2,322	2,825
6. SAR Water Quality			
- Total Dissolved Solids (TDS) of SAR below Prado Dam (ppm)	312	----	364
- Total Nitrogen of SAR below Prado Dam (ppm)	1.8	----	2.0
7. Month-End Water Storage Behind Prado Dam	6,421	----	6,732
8. Month-End Water Storage in Recharge Facilities	24,921	----	21,633
9. Water Storage Change in Recharge Facilities	138	14,782	3,151
10. Total Artificial Recharge	31,231	213,929	172,418
11. Monthly Mean Temperature at Santa Ana Fire Station	71 °F	----	60 °F
12. Rainfall at FHQ (inches)	0	15.43	6.3

## Orange County Sanitation District Influent Flows Report

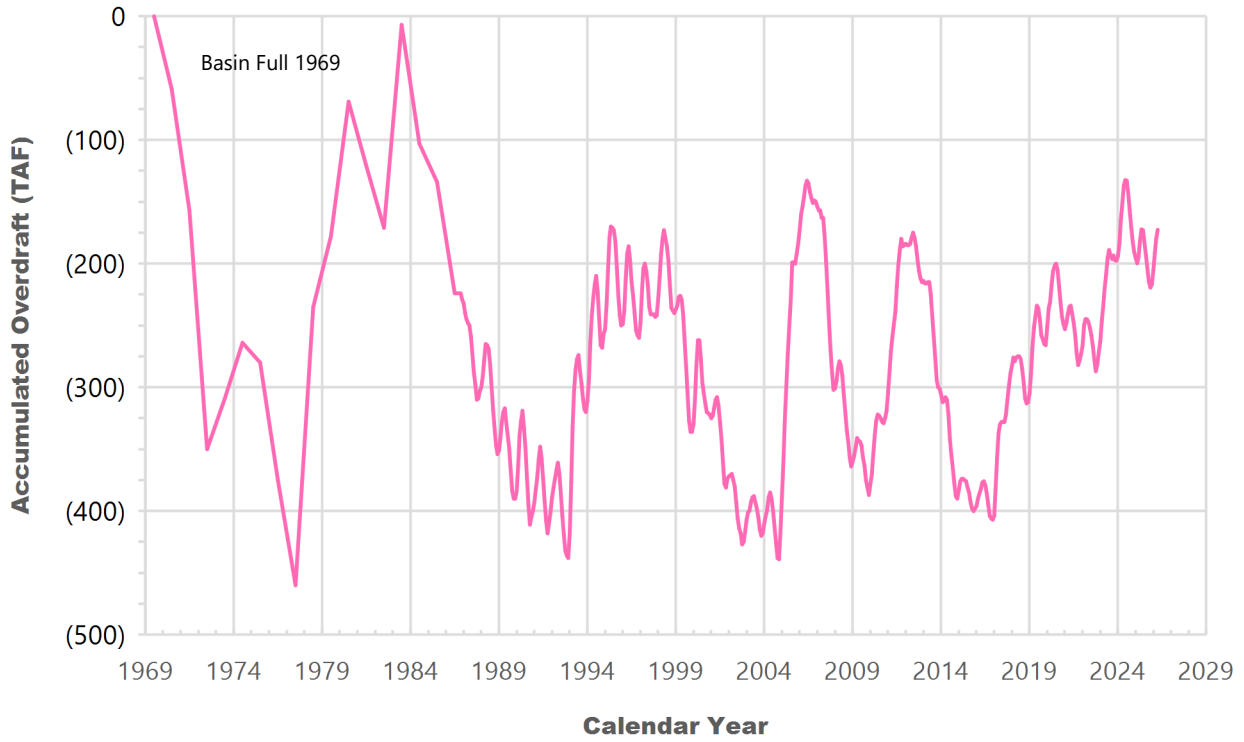


## 2025-26 Water Demands/Groundwater Pumping/RA Revenue Report

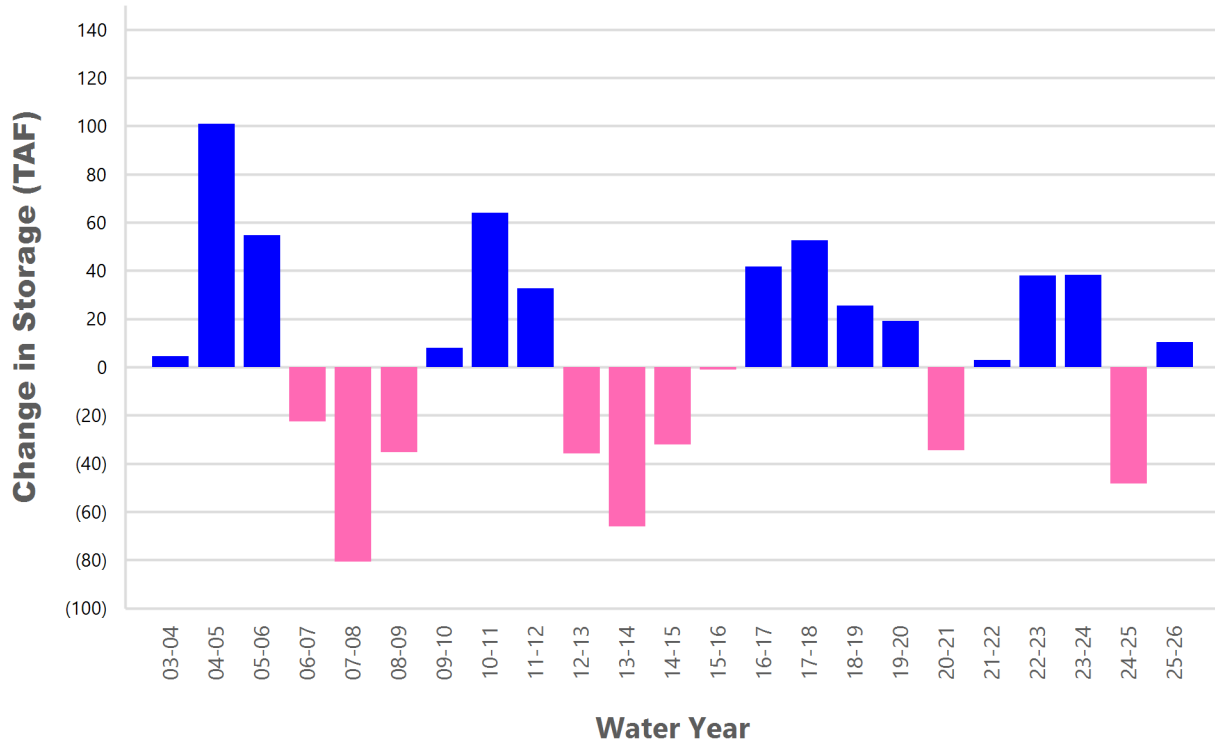


	Monthly		Accumulated Total for the Year			
	Budget	Actual	Budget	Actual	Difference	Percent
Total Water Demand	23,700	29,871	274,800	272,261	(2,539)	99.08 %
Total Pumping	20,800	26,027	223,200	217,830	(5,370)	97.59 %
RA Revenue	\$14,788,800	\$18,505,197	\$158,695,200	\$154,877,130	(\$3,818,070)	97.59 %

### Accumulated Overdraft



### YTD Change in Groundwater Storage in OCWD



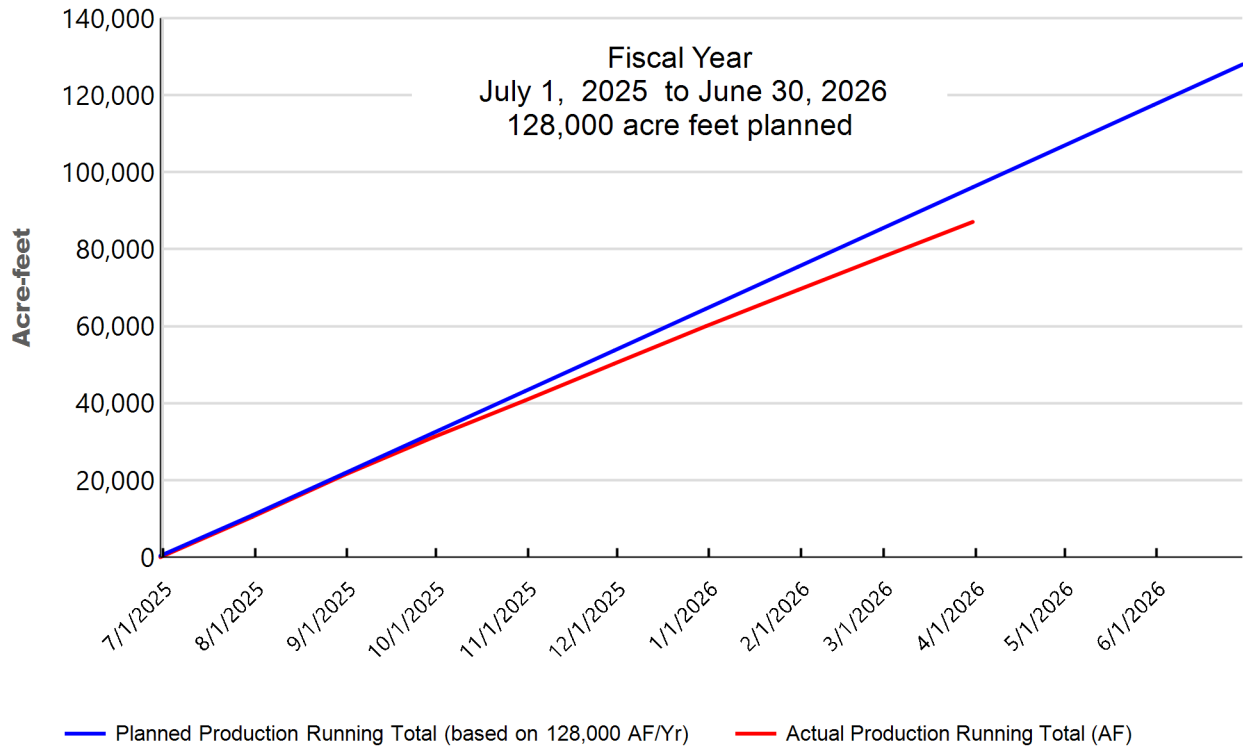
# PRODUCERS WATER USAGE SUMMARY

## March 2026

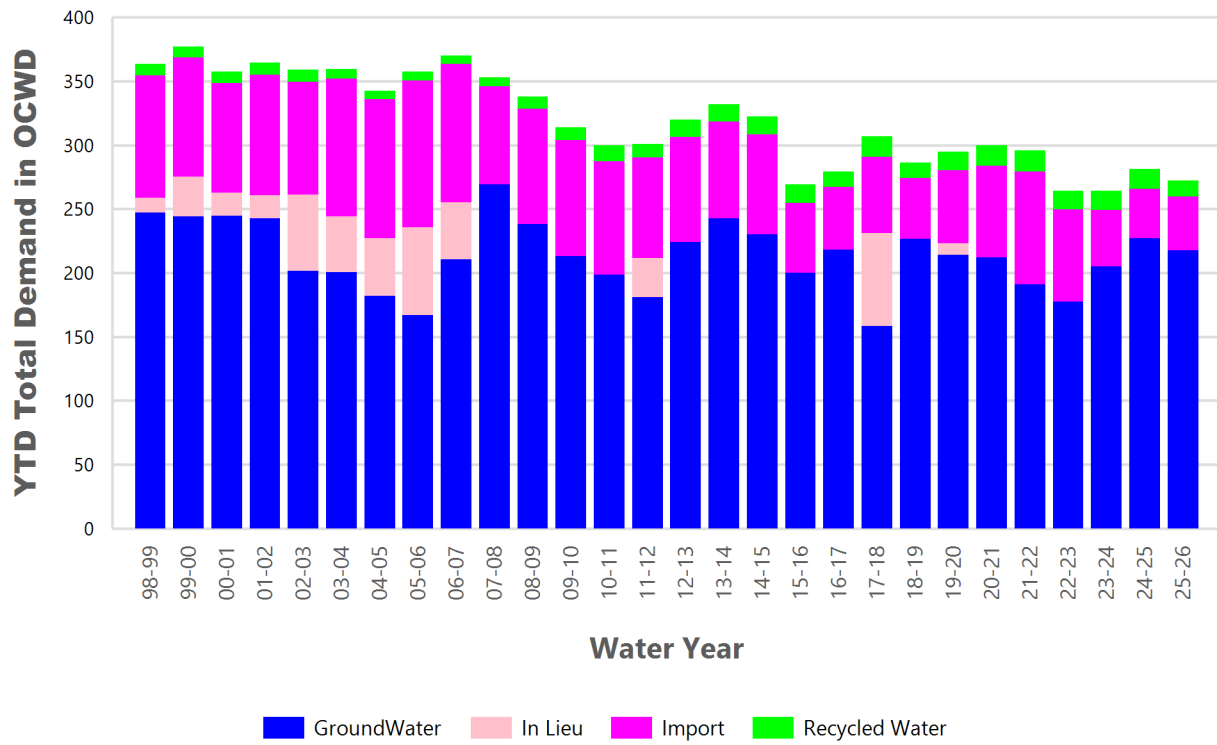
(units are acre-feet, unless percentage)

WATER AGENCY	Ground water	In Lieu	Reclaimed Water	Total Import	Total Demand	2025-26 YTD Demand	2024-25 YTD Demand	YTD % Diff Demand	Mar 2026 BPP	2025-26 YTD BPP	2024-25 YTD BPP
Anaheim	3,872	0	0	766	4,638	39,948	42,016	95 %	83.5 %	83.2 %	82.1 %
Buena Park	968	0	0	31	999	9,145	9,449	97 %	96.9 %	90.7 %	89.1 %
East Orange County	25	0	0	25	50	571	1,412	40 %	50 %	66.4 %	100 %
Fountain Valley	685	0	74	0	758	6,853	7,344	93 %	100 %	100 %	100 %
Fullerton	965	0	0	324	1,289	15,694	16,370	96 %	74.9 %	50.7 %	68.3 %
Garden Grove	1,702	0	0	24	1,726	15,348	15,870	97 %	98.6 %	85.3 %	95.1 %
Golden State	1,433	0	0	364	1,797	16,100	16,693	96 %	79.8 %	53.4 %	66.3 %
West OC System	921	-	-	170	1,091	9,756	9,983	98 %	na	na	na
East OC System	513	-	-	194	706	6,344	6,710	95 %	na	na	na
Huntington Beach	1,724	0	0	255	1,979	18,086	18,528	98 %	87.1 %	85.7 %	88.1 %
Irvine Ranch	3,648	0	487	39	4,175	44,162	44,890	98 %	98.9 %	99.3 %	98.8 %
DRWF Clear	2,318	-	-	-	2,318	21,242	18,933	112 %	na	na	na
DRWF Color	690	-	-	-	690	6,150	6,303	98 %	na	na	na
Laguna Beach	0	0	0	260	260	2,266	2,387	95 %	0 %	0 %	0 %
La Palma	132	0	0	0	132	1,213	1,227	99 %	100 %	99.9 %	100 %
Mesa Water (MW)	1,246	0	50	0	1,296	11,742	12,242	96 %	100 %	99.9 %	100 %
MW Clear	1,043	-	-	-	1,043	9,729	10,296	94 %	na	na	na
MW Amber	203	-	-	-	203	1,537	1,355	113 %	na	na	na
Newport Beach	835	0	30	205	1,070	9,793	10,197	96 %	80.3 %	85.9 %	86.5 %
Orange	2,166	0	0	437	2,603	18,987	18,759	101 %	83.2 %	79.5 %	82.5 %
OCWD (GAP)	134	0	0	0	134	1,096	1,113	98 %	100 %	100 %	100 %
Santa Ana	2,390	0	24	309	2,722	24,194	24,559	99 %	88.5 %	87.8 %	87.4 %
Seal Beach	329	0	0	1	330	2,891	2,897	100 %	99.8 %	99.8 %	86.9 %
Serrano	200	0	0	(3)	198	1,904	1,940	98 %	101.3 %	72.7 %	56.2 %
Tustin	847	0	0	0	847	7,598	6,861	111 %	100 %	89.4 %	65.6 %
Westminster	851	0	0	0	851	7,592	7,793	97 %	100 %	100 %	100 %
Yorba Linda	1,420	0	0	140	1,560	13,219	14,162	93 %	91 %	85.5 %	85.7 %
<b>SUBTOTAL</b>	<b>25,572</b>	<b>0</b>	<b>664</b>	<b>3,176</b>	<b>29,413</b>	<b>268,402</b>	<b>276,711</b>	<b>97 %</b>	<b>89 %</b>	<b>83.7 %</b>	<b>85.3 %</b>
Other Producers (Est ~2% of Subtotal)	455	0	0	4	459	3,859	4,628	83 %			
<b>TOTAL</b>	<b>26,027</b>	<b>0</b>	<b>664</b>	<b>3,180</b>	<b>29,871</b>	<b>272,261</b>	<b>281,339</b>	<b>97 %</b>	<b>89.1 %</b>	<b>83.9 %</b>	<b>85.5 %</b>
OCWD (Talbert Barrier)	0		1,128	0	1,128	12,875	13,992				
OCSD (GAP)	na		119	na	119	789	741				

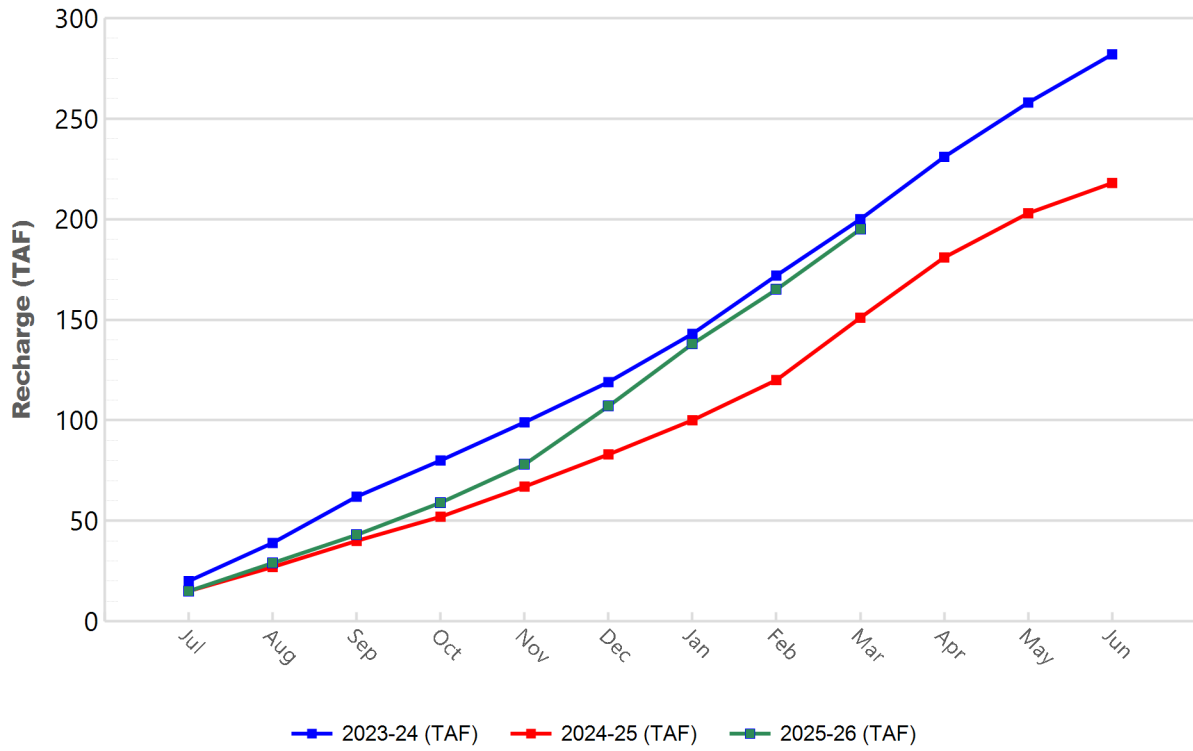
### GWRS Actual Production to Target Production



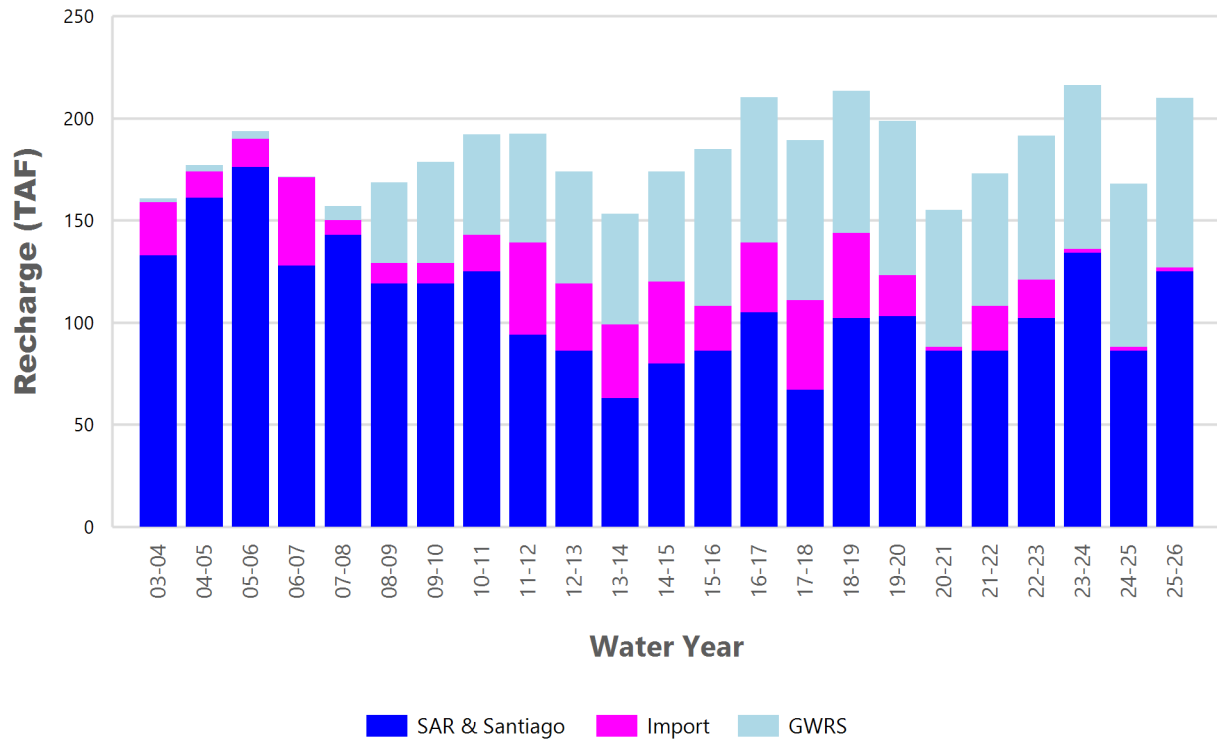
### YTD Total Demand in OCWD



### Annual Forebay Recharge



### YTD Artificial Recharge by OCWD



## RECHARGE AREAS REPORT

March 2026

	Percolation (AF)	Remarks
RIVER SYSTEM	5,273	86 cfs per day average perc
DESILTING SYSTEM	na	SAR
OFF-RIVER SYSTEM	1,587	SAR
WARNER SYSTEM	799	SAR
OLIVE BASIN	na	Passive System
ANAHEIM LAKE	2,335	SAR
MINI-ANA LAKE	207	SAR
MILLER BASIN	1,078	GWRS
KRAEMER BASIN	2,990	SAR
LA PALMA BASIN	4,587	GWRS
MIRALOMA BASIN	1,886	GWRS
LA JOLLA BASIN	138	SAR
PLACENTIA BASIN	846	SAR
RAYMOND BASIN	458	SAR
FIVE COVES BASIN	na	SAR
BURRIS BASIN	1,572	SAR
RIVER VIEW BASIN	61	SAR, Burris Pumping
FLETCHER BASIN	67	SAR, Burris Pumping
SANTIAGO BASINS	5,526	SAR, Burris Pumping
SANTIAGO CREEK	187	SAR, Burris Pumping
<b>TOTALS</b>	<b>29,596</b>	
<b>5-YR AVERAGE</b>	<b>26,361</b>	

FLOWS TO RECHARGE AREAS (AF)	
Imperial Headgates (estimated)	22,372
GWRS	7,624
OC-28 (MWD)	0
OC-28a (MWD)	0
OC-59	0
Est'd local Forebay inflow below Imperial	0
Est'd local Santiago inflow (estimated)	61
Irvine lake releases (OC-13 MWD)	0
Villa Park Dam releases (estimated)	0
Precip at Warner Basin (inches)	0.00
Precip direct to open water surfaces	0
<b>TOTAL INFLOW</b>	<b>30,057</b>

LOSSES FROM RECHARGE AREAS (AF)	
Est'd SAR flow past Chapman Ave.	0
Est'd Santiago Cr. flow to SAR	0
Est'd flows past Raymond Basin	0
Calc'd evap (inches) Estimated	3.68
Est'd evaporative losses	324
<b>TOTAL LOSSES</b>	<b>324</b>

STORAGE CHANGES (AF)			
Facility	Begin	End	Net
Deep basins	11,189	11,257	68
Santiago Pits	13,594	13,664	70
River			
Off-river			
Irvine Lake			
<b>TOTAL</b>	<b>24,783</b>	<b>24,921</b>	<b>138</b>

SUMMARY (AF)	
TOTAL INFLOW	30,057
TOTAL LOSSES	324
STORAGE CHANGE	138
CALC'D PERCOLATION	29,596

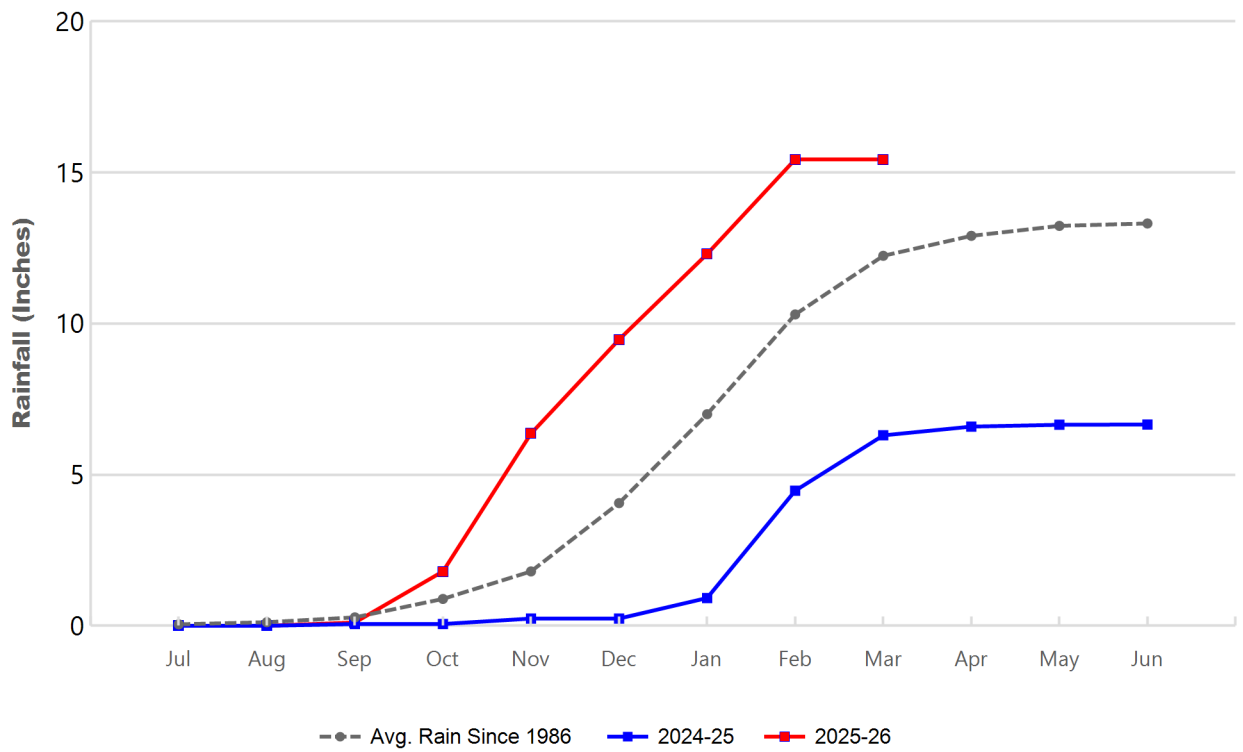
## DEEP BASINS MONTHLY STATUS

**March 2026**

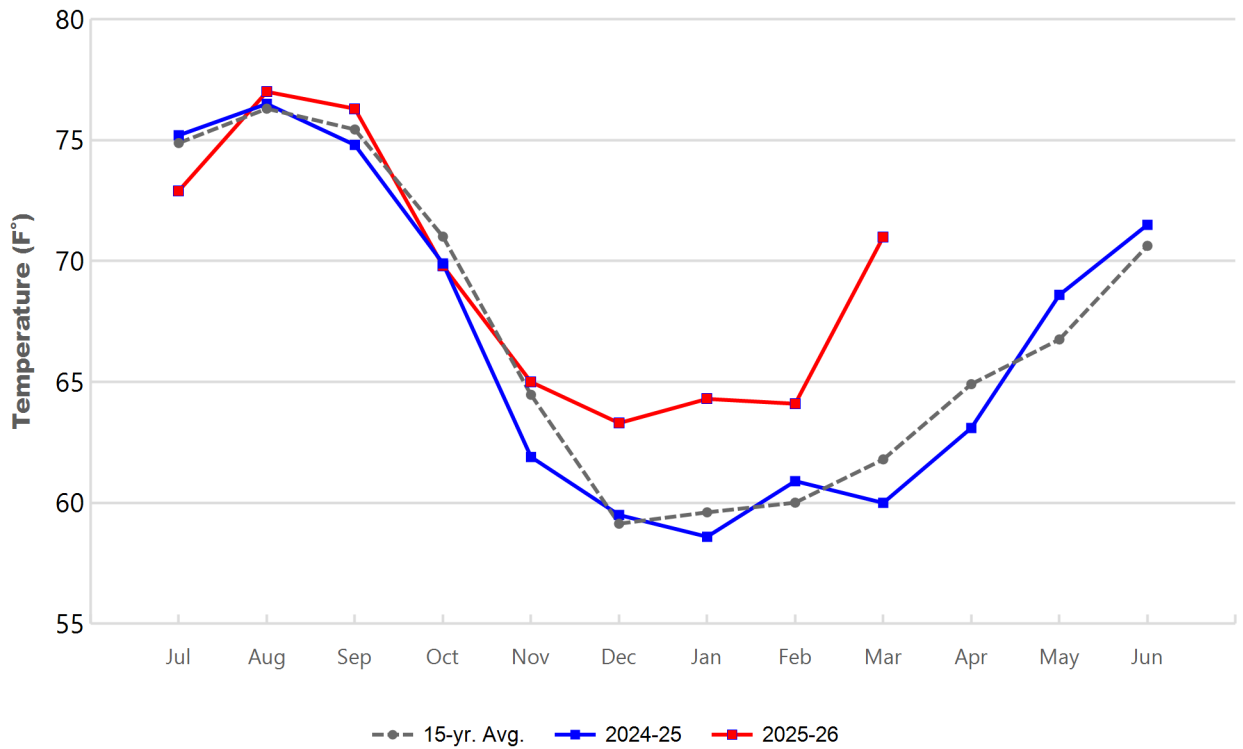
(values in acre-feet)

<i>Facility</i>	<i>Storage Start</i>	<i>Storage End</i>	<i>Maximum Storage</i>	<i>Total Perc</i>	<i>Max Perc</i>	<i>Avg Perc</i>	<i>Avg W.S. Elev</i>
Desilting Ponds	230	230	252	na	na	na	na
Fos-Huckleberry	564	569	628	na	na	na	na
Conrock Basin	591	589	661	na	na	na	na
Warner Basins	2,991	2,973	3,020	799	na	na	240
Olive Pit	48	63	95	na	na	na	214
Anaheim Lake	2,372	2,368	2,386	2,335	84	76	223
Mini-Anaheim Lk	22	24	44	207	9	7	228
Miller Basin	7	81	350	1,078	49	35	207
Kraemer Basin	1,055	1,122	1,142	2,990	108	98	219
La Palma Basin	98	92	101	4,587	177	148	219
Miraloma Basin	43	53	53	1,886	67	61	220
La Jolla Basin	20	0	20	138	8	5	203
Placentia Basin	121	101	260	846	52	28	175
Raymond Basin	232	168	260	458	26	15	158
Five Coves Basins	327	324	554	na	na	na	na
Burriss Pit	2,442	2,473	2,500	1,572	56	52	171
River View Basin	7	8	14	61	2	2	186
Fletcher Basin	20	20	24	67	3	2	190
Santiago (Bond)	8,318	8,350	8,312	5,526	194	181	286
Santiago (Blu Dia)	5,276	5,313	5,259	-	-	-	-
<b>Totals</b>	<b>24,783</b>	<b>24,921</b>	<b>25,934</b>	<b>22,549</b>			
Prado Dam	18,712	6,421	25,374				

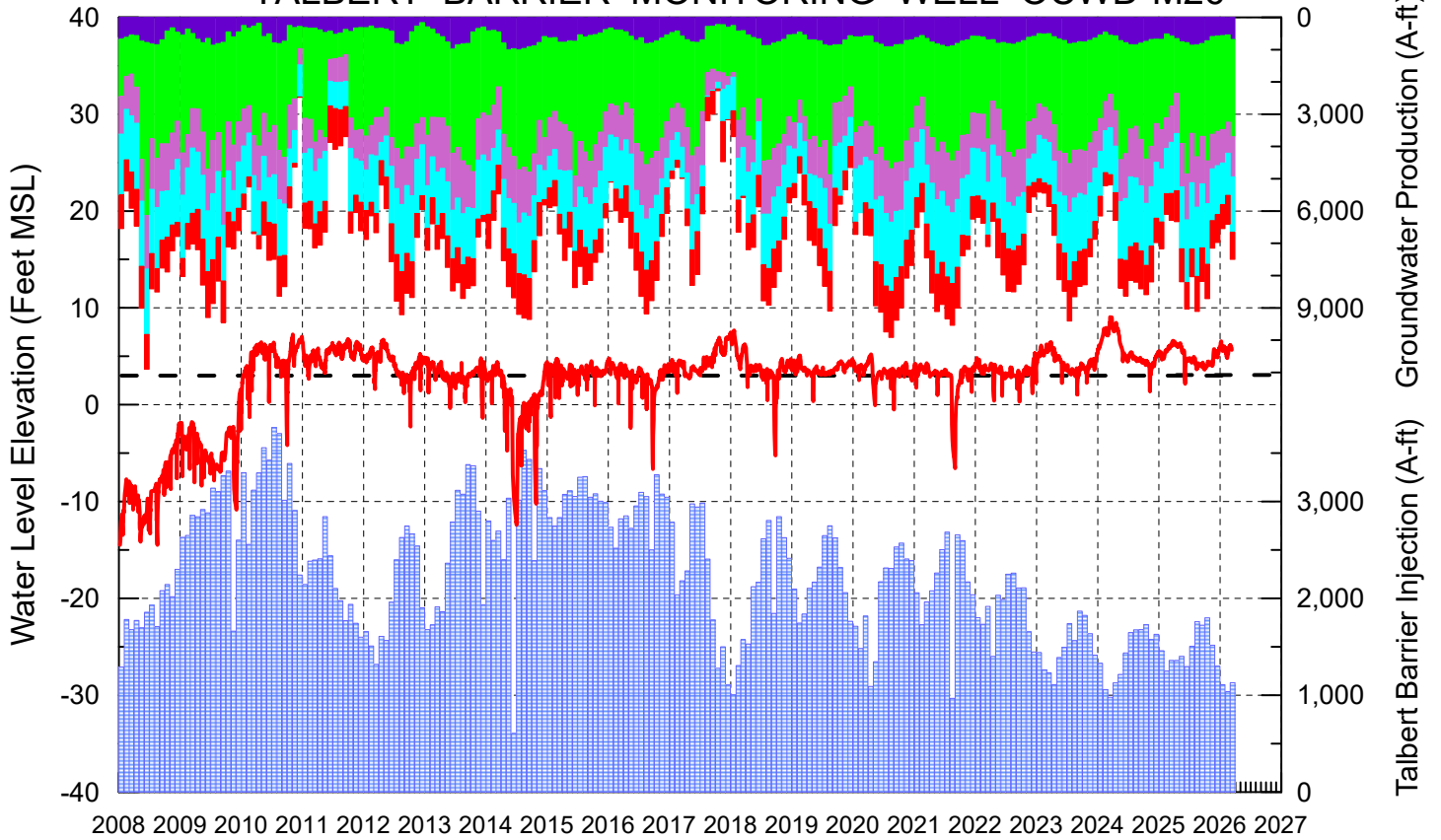
### Cumulative Anaheim Field HQ Rainfall



### Temperature at Santa Ana Fire Station



# TALBERT BARRIER MONITORING WELL OCWD-M26



- Talbert/Lambda Aquifer Mergence Zone Perforated Interval: 71 - 135 ft. bgs
- ▨ Talbert Barrier Injection
- Protective Level to Prevent Seawater Intrusion
- Fountain Valley Groundwater Production
- IRWD Groundwater Production
- Mesa Water Groundwater Production
- Huntington Beach Groundwater Production
- Newport Beach Groundwater Production

