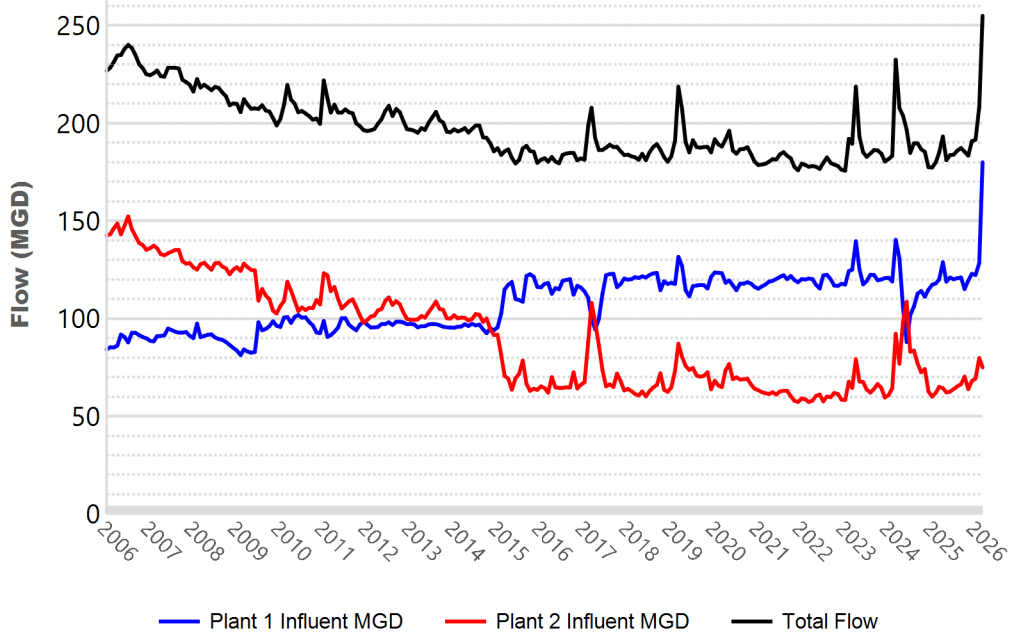


# WATER RESOURCES SUMMARY

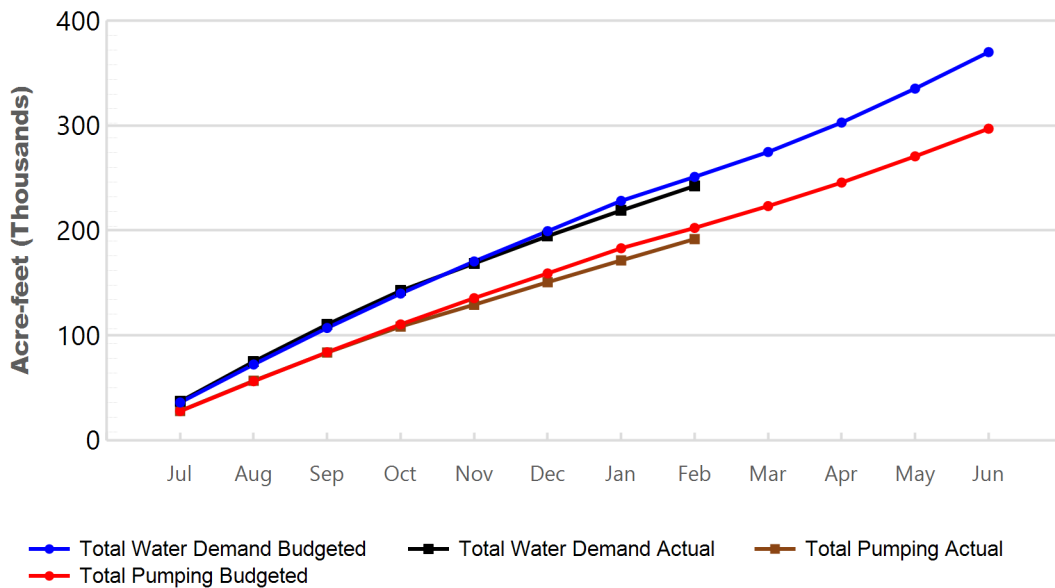
## February 2026

INFLOWS & OUTFLOWS (acre-feet)	Total for Month	Year to Date -	
		This Year	Last Year
<b>BASIN SUPPLIES</b>			
Water Purchases from MWD (excludes In Lieu)	0	0	0
SAR & Santiago Creek Flows (accounts for storage to/from recharge facilities)	22,906	111,735	67,393
GWRS Water to Forebay	6,889	61,662	56,009
GWRS Water to Mid-Basin Injection Wells	503	4,438	4,777
GWRS Water to Talbert Barrier	1,037	11,746	12,634
OC-44 and F. Valley Water to Talbert Barrier	1	2	10
Alamitos Barrier Water	175	1,615	1,656
Incidental Recharge (estimated)	3,000	12,450	5,213
Evaporation from Recharge Basins	(252)	(2,099)	(1,910)
River Flow Lost to Ocean	(2,188)	(6,392)	(1,572)
<b>Total Groundwater Recharge</b>	<b>32,071</b>	<b>195,157</b>	<b>144,210</b>
<b>GROUNDWATER PRODUCTION</b>	<b>20,360</b>	<b>191,803</b>	<b>205,969</b>
<b>BASIN BALANCE</b>			
Change in Groundwater Storage	11,711	3,355	(61,759)
Accumulated Overdraft	----	179,650	194,763
<b>OCWD IN LIEU PURCHASES (MWD CYCLIC STORAGE)</b>	<b>0</b>	<b>0</b>	<b>0</b>
<b>OTHER KEY INFORMATION</b>			
1. MWD Water Deliveries to Producers	2,517	38,595	36,234
2. Achieved Basin Production Percentage (Current BPP - 85%)	89 %	83.3 %	85 %
3. Total Water Demand	23,416	242,389	257,054
4. Total GWRS Production	8,431	77,866	73,457
5. Green Acres Project Water	175	2,026	2,677
6. SAR Water Quality			
- Total Dissolved Solids (TDS) of SAR below Prado Dam (ppm)	554	----	624
- Total Nitrogen of SAR below Prado Dam (ppm)	3.1	----	5.1
7. Month-End Water Storage Behind Prado Dam	18,712	----	7,969
8. Month-End Water Storage in Recharge Facilities	24,783	----	18,244
9. Water Storage Change in Recharge Facilities	317	14,644	(238)
10. Total Artificial Recharge	29,071	182,708	138,997
11. Monthly Mean Temperature at Santa Ana Fire Station	65.5 °F	----	60.9 °F
12. Rainfall at FHQ (inches)	3.13	15.43	4.47

## Orange County Sanitation District Influent Flows Report

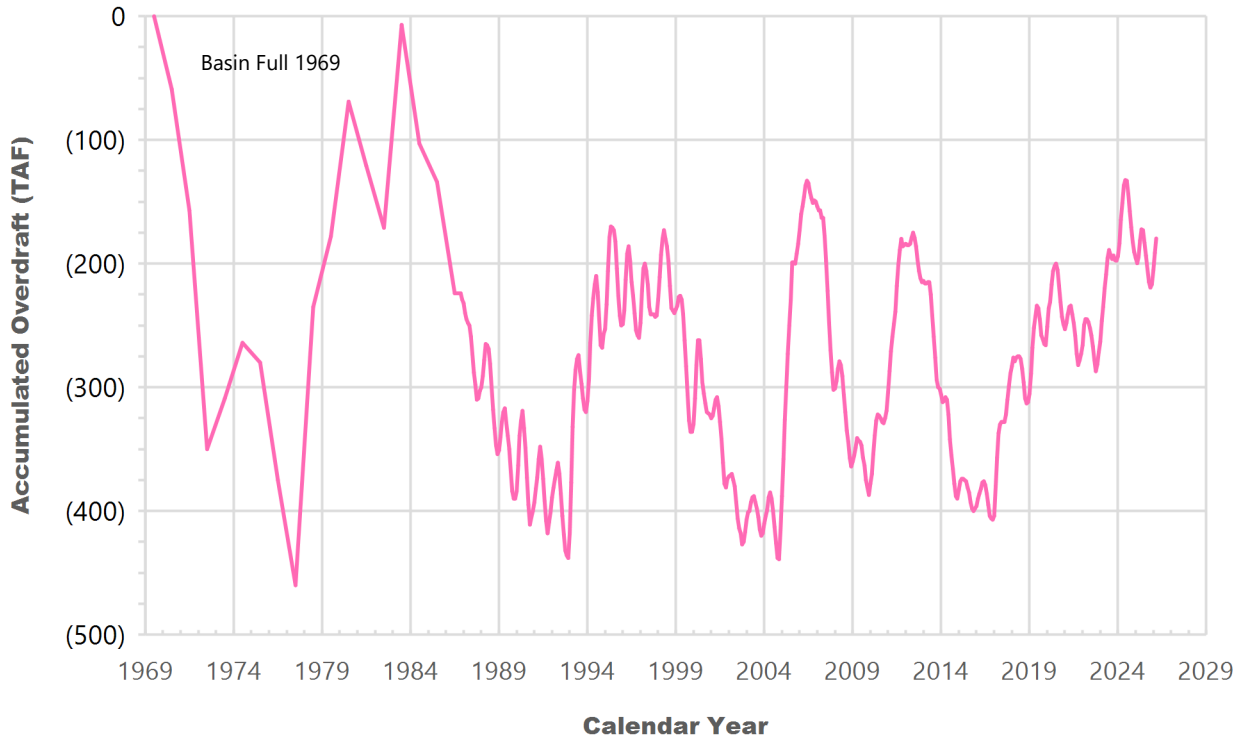


## 2025-26 Water Demands/Groundwater Pumping/RA Revenue Report

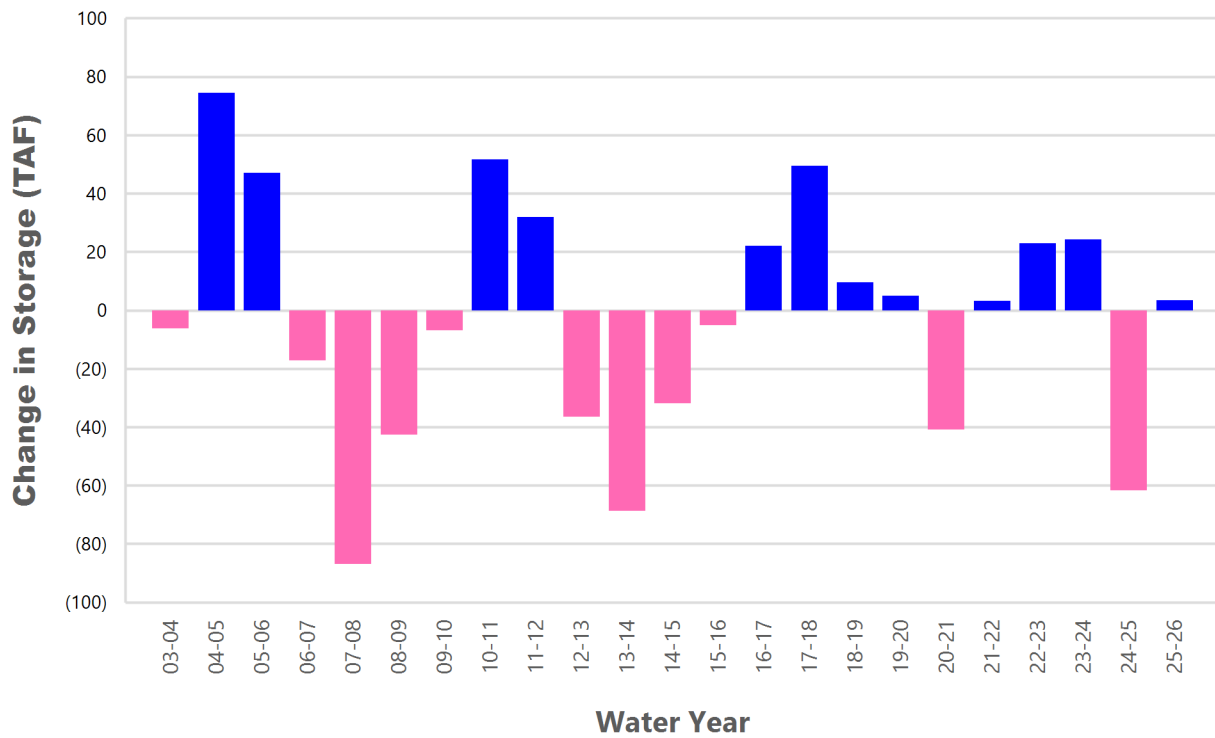


	Monthly		Accumulated Total for the Year			
	Budget	Actual	Budget	Actual	Difference	Percent
Total Water Demand	22,900	23,416	251,100	242,389	(8,711)	96.53 %
Total Pumping	19,400	20,360	202,400	191,803	(10,597)	94.76 %
RA Revenue	\$13,793,400	\$14,475,960	\$143,906,400	\$136,371,933	(\$7,534,467)	94.76 %

### Accumulated Overdraft



### YTD Change in Groundwater Storage in OCWD



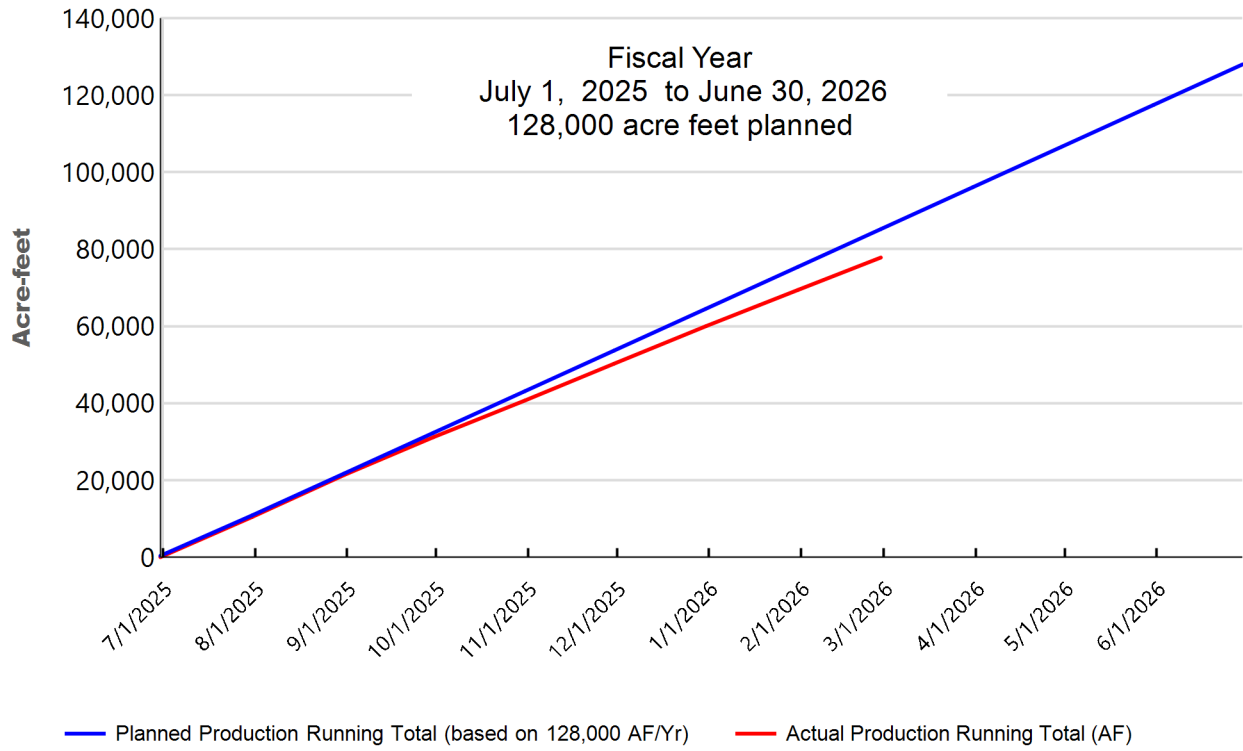
# PRODUCERS WATER USAGE SUMMARY

## February 2026

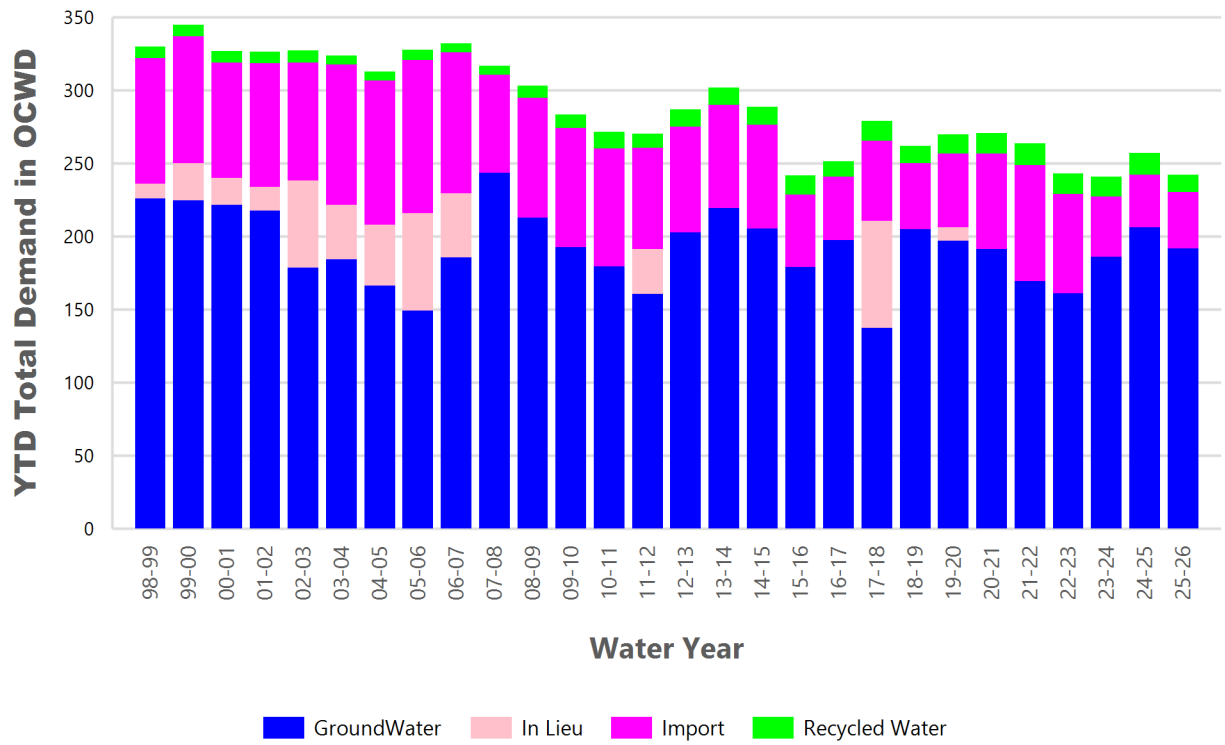
(units are acre-feet, unless percentage)

WATER AGENCY	Ground water	In Lieu	Reclaimed Water	Total Import	Total Demand	2025-26 YTD Demand	2024-25 YTD Demand	YTD % Diff Demand	Feb 2026 BPP	2025-26 YTD BPP	2024-25 YTD BPP
Anaheim	2,776	0	0	558	3,335	35,310	38,470	92 %	83.3 %	83.2 %	81.5 %
Buena Park	802	0	0	0	802	8,146	8,601	95 %	100 %	89.9 %	88.2 %
East Orange County	25	0	0	25	50	521	1,239	42 %	50.9 %	67.9 %	100 %
Fountain Valley	544	0	39	0	583	6,095	6,736	90 %	100 %	100 %	99.8 %
Fullerton	774	0	0	566	1,340	14,406	14,951	96 %	57.7 %	48.6 %	67.4 %
Garden Grove	1,381	0	0	0	1,381	13,622	14,463	94 %	100 %	83.6 %	94.6 %
Golden State	1,062	0	0	302	1,364	14,302	15,210	94 %	77.8 %	50 %	65.7 %
West OC System	721	-	-	126	847	8,665	9,054	96 %	na	na	na
East OC System	341	-	-	177	518	5,638	6,157	92 %	na	na	na
Huntington Beach	1,305	0	0	242	1,547	16,107	16,810	96 %	84.4 %	85.5 %	87.7 %
Irvine Ranch	3,300	0	461	4	3,765	39,987	41,436	97 %	99.9 %	99.4 %	98.8 %
DRWF Clear	2,075	-	-	-	2,075	18,923	17,482	108 %	na	na	na
DRWF Color	624	-	-	-	624	5,460	5,583	98 %	na	na	na
Laguna Beach	0	0	0	197	197	2,006	2,170	92 %	0 %	0 %	0 %
La Palma	107	0	0	0	107	1,081	1,114	97 %	100 %	99.9 %	100 %
Mesa Water (MW)	964	0	17	0	981	10,446	11,089	94 %	100 %	99.9 %	100 %
MW Clear	964	-	-	-	964	8,686	9,197	94 %	na	na	na
MW Amber	0	-	-	-	0	1,334	1,329	100 %	na	na	na
Newport Beach	892	0	9	2	903	8,723	9,303	94 %	99.8 %	86.6 %	85.6 %
Orange	1,512	0	0	237	1,749	16,384	17,138	96 %	86.5 %	79 %	81.5 %
OCWD (GAP)	102	0	0	0	102	962	1,012	95 %	100 %	100 %	100 %
Santa Ana	1,921	0	13	225	2,160	21,472	22,181	97 %	89.5 %	87.7 %	87.5 %
Seal Beach	252	0	0	1	252	2,561	2,619	98 %	99.8 %	99.8 %	85.5 %
Serrano	70	0	0	72	143	1,706	1,791	95 %	49.3 %	69.4 %	59.1 %
Tustin	623	0	0	0	624	6,751	6,329	107 %	100 %	88.1 %	64 %
Westminster	678	0	0	0	678	6,742	7,027	96 %	100 %	100 %	100 %
Yorba Linda	915	0	0	82	996	11,660	13,060	89 %	91.8 %	84.8 %	84.8 %
<b>SUBTOTAL</b>	<b>20,004</b>	<b>0</b>	<b>539</b>	<b>2,514</b>	<b>23,057</b>	<b>238,989</b>	<b>252,748</b>	<b>95 %</b>	<b>88.8 %</b>	<b>83 %</b>	<b>84.8 %</b>
Other Producers (Est ~2% of Subtotal)	356	0	0	3	359	3,400	4,306	79 %			
<b>TOTAL</b>	<b>20,360</b>	<b>0</b>	<b>539</b>	<b>2,517</b>	<b>23,416</b>	<b>242,390</b>	<b>257,054</b>	<b>94 %</b>	<b>89 %</b>	<b>83.2 %</b>	<b>85 %</b>
OCWD (Talbert Barrier)	0		1,037	0	1,037	11,746	12,634				
OCSD (GAP)	na		96	na	96	670	686				

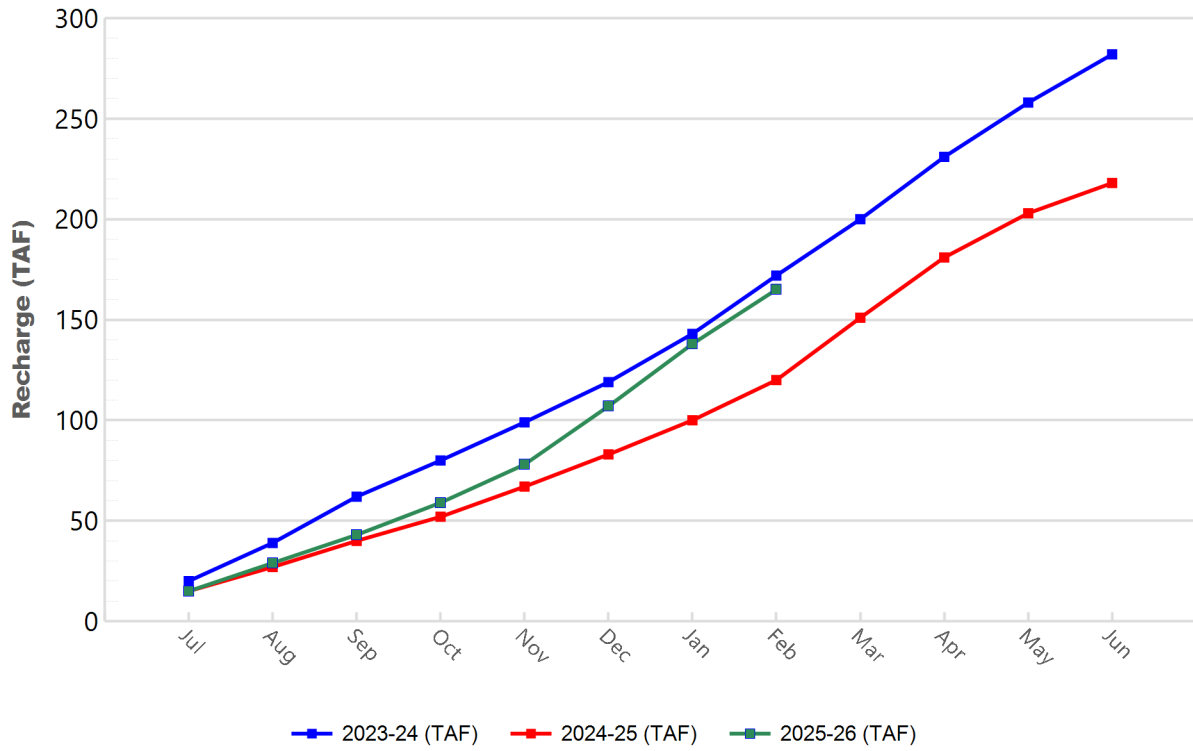
### GWRS Actual Production to Target Production



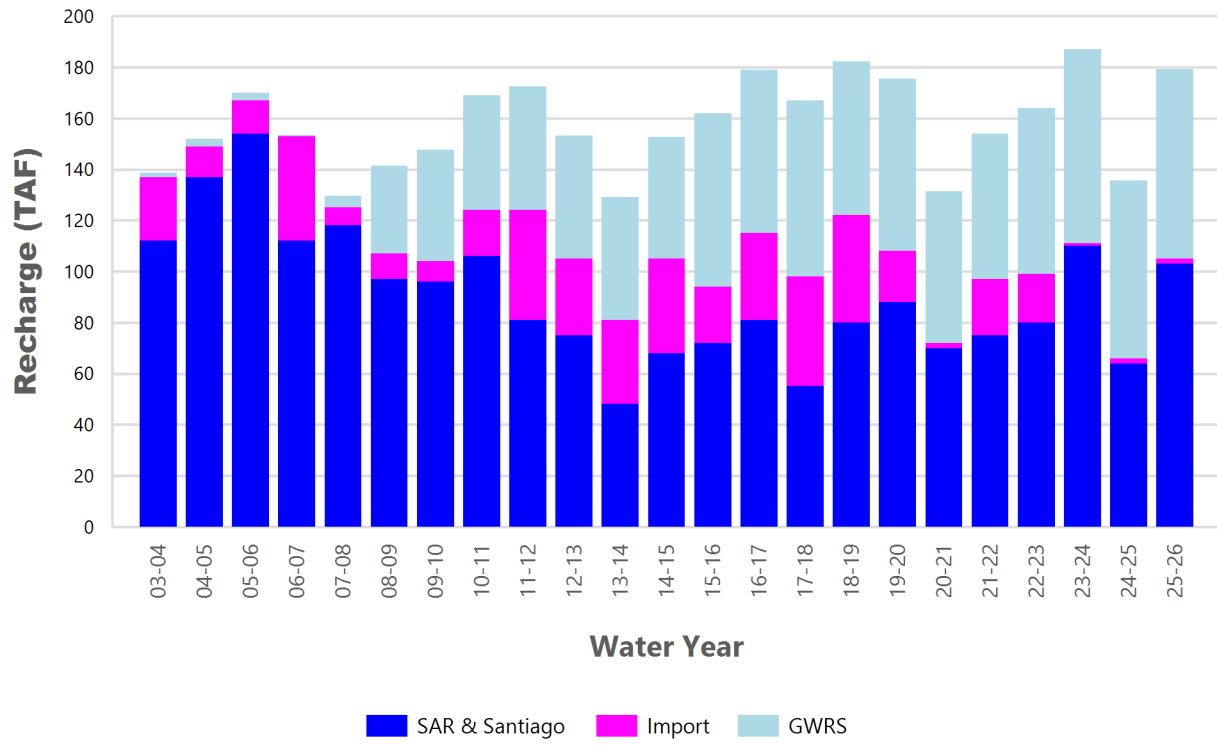
### YTD Total Demand in OCWD



### Annual Forebay Recharge



### YTD Artificial Recharge by OCWD



## RECHARGE AREAS REPORT

February 2026

	Percolation (AF)	Remarks
RIVER SYSTEM	4,435	80 cfs per day average perc
DESILTING SYSTEM	na	SAR
OFF-RIVER SYSTEM	1,083	SAR
WARNER SYSTEM	199	SAR
OLIVE BASIN	na	Passive System
ANAHEIM LAKE	2,897	SAR
MINI-ANA LAKE	167	SAR
MILLER BASIN	123	GWRS
KRAEMER BASIN	3,258	SAR
LA PALMA BASIN	5,004	GWRS
MIRALOMA BASIN	1,725	GWRS
LA JOLLA BASIN	206	SAR
PLACENTIA BASIN	422	SAR
RAYMOND BASIN	532	SAR
FIVE COVES BASIN	na	SAR
BURRIS BASIN	1,291	SAR
RIVER VIEW BASIN	54	SAR, Burris Pumping
FLETCHER BASIN	55	SAR, Burris Pumping, Local runoff
SANTIAGO BASINS	5,757	SAR, Burris Pumping, Local runoff
SANTIAGO CREEK	145	SAR, Burris Pumping
<b>TOTALS</b>	<b>27,355</b>	
<b>5-YR AVERAGE</b>	<b>23,914</b>	

FLOWS TO RECHARGE AREAS (AF)	
Imperial Headgates (estimated)	20,017
GWRS	6,889
OC-28 (MWD)	0
OC-28a (MWD)	0
OC-59	0
Est'd local Forebay inflow below Imperial	2,400
Est'd local Santiago inflow (estimated)	543
Irvine lake releases (OC-13 MWD)	0
Villa Park Dam releases (estimated)	0
Precip at Warner Basin (inches)	3.13
Precip direct to open water surfaces	262
<b>TOTAL INFLOW</b>	<b>30,112</b>

LOSSES FROM RECHARGE AREAS (AF)	
Est'd SAR flow past Chapman Ave.	2,066
Est'd Santiago Cr. flow to SAR	122
Est'd flows past Raymond Basin	0
Calc'd evap (inches) Estimated	3.01
Est'd evaporative losses	252
<b>TOTAL LOSSES</b>	<b>2,440</b>

STORAGE CHANGES (AF)			
Facility	Begin	End	Net
Deep basins	10,916	11,189	273
Santiago Pits	13,550	13,594	44
River			
Off-river			
Irvine Lake			
<b>TOTAL</b>	<b>24,466</b>	<b>24,783</b>	<b>317</b>

SUMMARY (AF)	
TOTAL INFLOW	30,112
TOTAL LOSSES	2,440
STORAGE CHANGE	317
<b>CALC'D PERCOLATION</b>	<b>27,355</b>

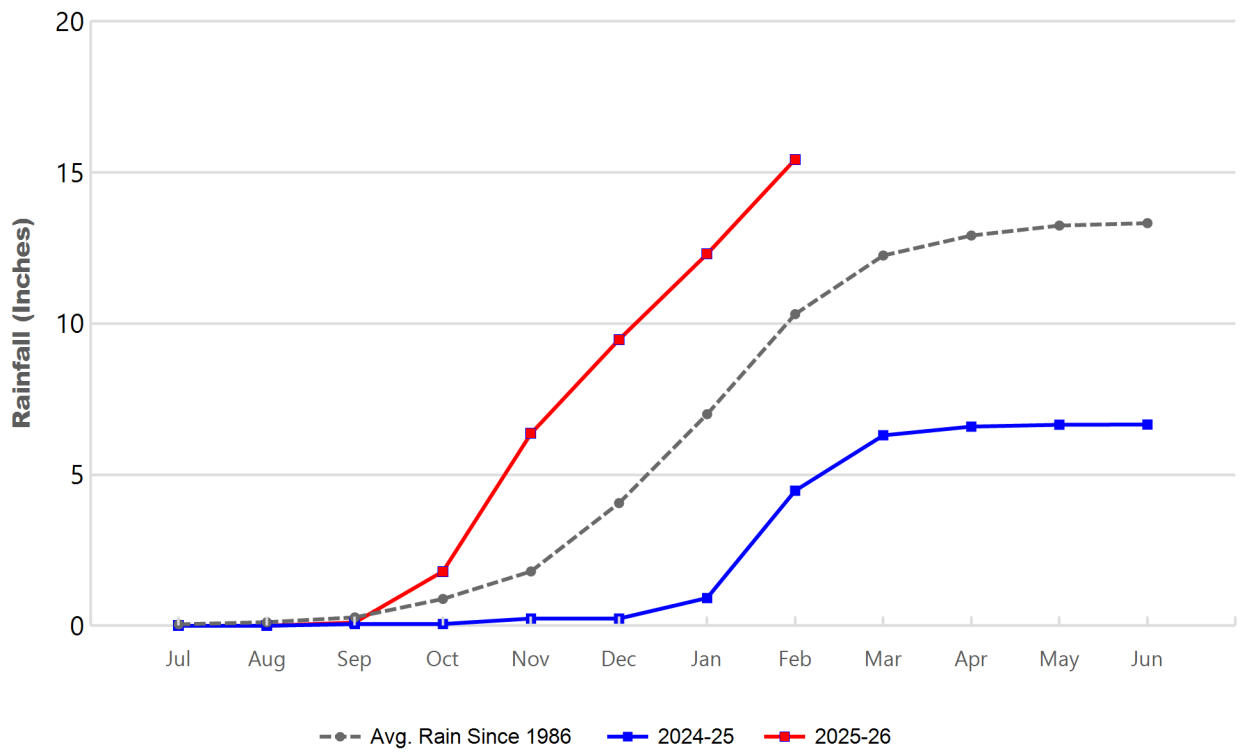
## DEEP BASINS MONTHLY STATUS

**February 2026**

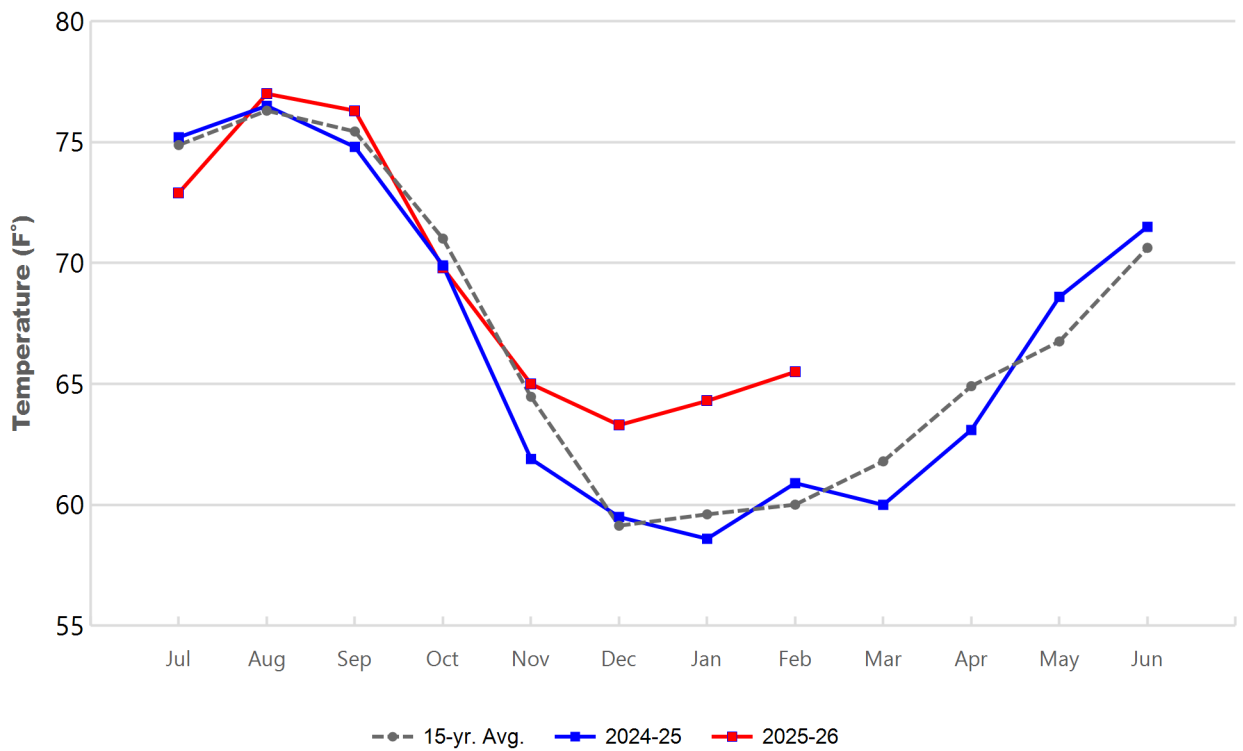
(values in acre-feet)

<i>Facility</i>	<i>Storage Start</i>	<i>Storage End</i>	<i>Maximum Storage</i>	<i>Total Perc</i>	<i>Max Perc</i>	<i>Avg Perc</i>	<i>Avg W.S. Elev</i>
Desilting Ponds	230	230	252	na	na	na	na
Fos-Huckleberry	580	564	628	na	na	na	na
Conrock Basin	606	591	661	na	na	na	na
Warner Basins	2,990	2,991	3,020	199	na	na	239
Olive Pit	50	48	95	na	na	na	213
Anaheim Lake	2,316	2,372	2,386	2,897	116	101	222
Mini-Anaheim Lk	10	22	44	167	13	6	227
Miller Basin	0	7	350	123	14	4	201
Kraemer Basin	1,055	1,055	1,055	3,258	124	114	219
La Palma Basin	64	98	101	5,004	188	179	218
Miraloma Basin	53	43	53	1,725	71	62	220
La Jolla Basin	20	20	20	206	13	7	203
Placentia Basin	45	121	260	422	32	15	171
Raymond Basin	102	232	260	532	42	19	153
Five Coves Basins	324	327	554	na	na	na	na
Burriss Pit	2,445	2,442	2,500	1,291	53	45	171
River View Basin	9	7	14	54	3	2	185
Fletcher Basin	19	20	24	55	4	2	190
Santiago (Bond)	8,298	8,318	8,312	5,757	229	202	285
Santiago (Blu Dia)	5,252	5,276	5,259	-	-	-	-
<b>Totals</b>	<b>24,466</b>	<b>24,783</b>	<b>25,847</b>	<b>21,692</b>			
Prado Dam	9,694	18,712	25,374				

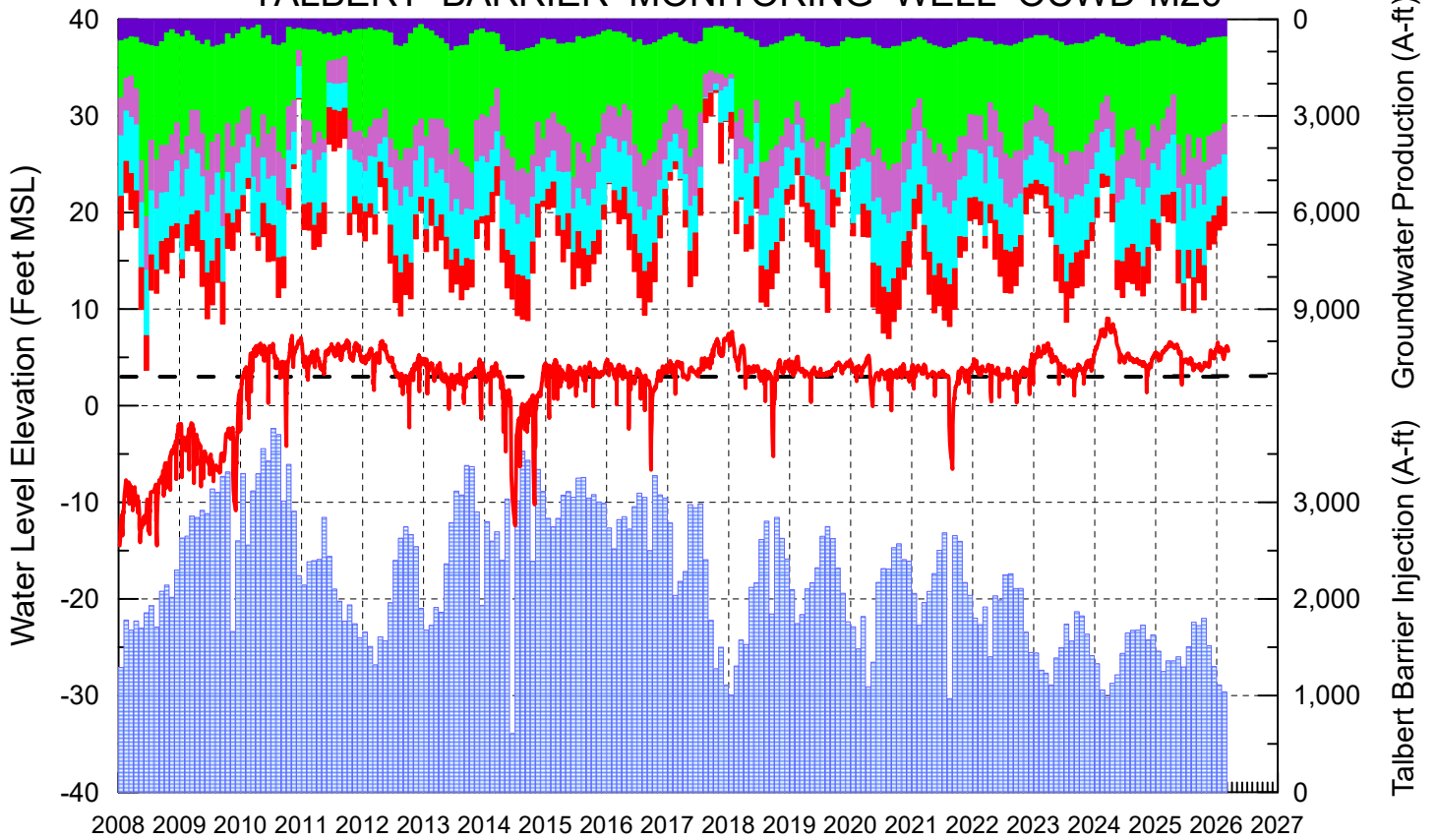
### Cumulative Anaheim Field HQ Rainfall



### Temperature at Santa Ana Fire Station



# TALBERT BARRIER MONITORING WELL OCWD-M26



- Talbert/Lambda Aquifer Mergence Zone Perforated Interval: 71 - 135 ft. bgs
- ▨ Talbert Barrier Injection
- - - Protective Level to Prevent Seawater Intrusion
- Fountain Valley Groundwater Production
- IRWD Groundwater Production
- Mesa Water Groundwater Production
- Huntington Beach Groundwater Production
- Newport Beach Groundwater Production

