

WATER RESOURCES SUMMARY

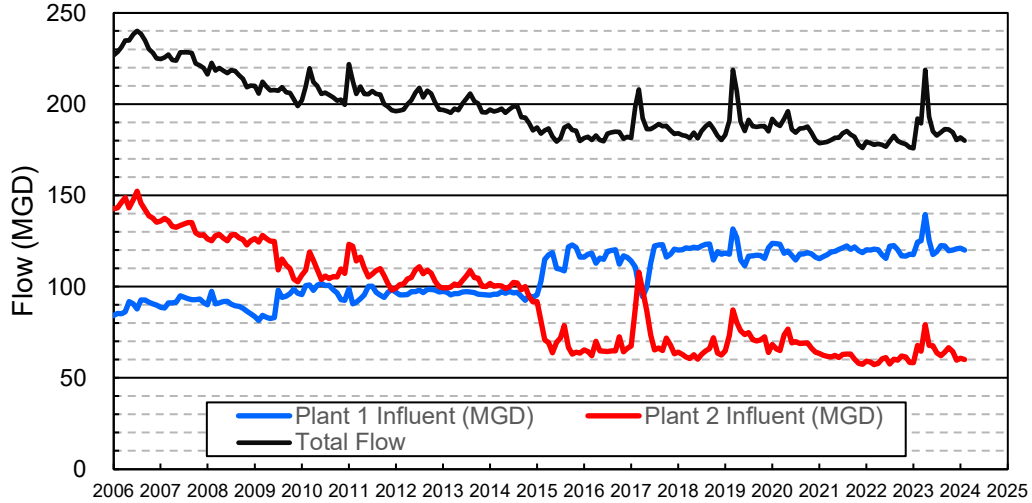
January 2024

INFLOWS & OUTFLOWS (acre-feet)	Total for Month	Year to Date - This Year Last Year	
BASIN SUPPLIES			
Water Purchases from MWD (excludes In Lieu)	7	7	16,864
Water into MWD Storage Account (excludes In Lieu)	0	0	0
SAR & Santiago Creek Flows (accounts for storage to/from recharge facilities)	15,740	91,741	95,157
GWRS Water to Forebay	8,861	54,913	42,368
GWRS Water to Mid-Basin Injection Wells	546	4,312	4,526
GWRS Water to Talbert Barrier	1,329	11,370	13,265
OC-44 and F. Valley Water to Talbert Barrier	0	7	18
Alamitos Barrier Water	190	1,249	1,638
Incidental Recharge (estimated)	3,000	11,700	14,400
Evaporation from Recharge Basins	(214)	(2,239)	(1,542)
River Flow Lost to Ocean	<u>(703)</u>	<u>(1,373)</u>	<u>(30,998)</u>
Total Groundwater Recharge	28,757	171,686	155,696
WATER PRODUCTION			
Groundwater Production	19,221	166,942	144,055
MWD Storage Program Withdrawals	<u>0</u>	<u>0</u>	<u>0</u>
Total Groundwater Production	19,221	166,942	144,055
BASIN BALANCE			
Change in Groundwater Storage	9,537	4,744	11,640
Change in Groundwater Storage excluding MWD Stored Water	9,537	4,744	11,640
Accumulated Overdraft	-----	184,258	246,362
Accumulated Overdraft excluding MWD Storage	-----	184,258	246,362
IN LIEU WATER			
OCWD In Lieu Purchases (MWD Cyclic Storage)	0	0	0
MWD In Lieu Storage	<u>0</u>	<u>0</u>	<u>0</u>
Total In Lieu	0	0	0
OTHER KEY INFORMATION			
1. MWD Water Deliveries to Producers	3,412	39,132	63,145
2. Basin Production Percentage	84.9%	81.0%	69.5%
3. Total Water Demand	24,336	218,838	219,580
4. Total GWRS Production	10,741	70,632	60,204
5. Green Acres Project Water	133	2,026	2,251
6. SAR Water Quality			
- Total Dissolved Solids (TDS) of SAR below Prado Dam (ppm)	668	-----	322
- Total Nitrogen of SAR below Prado Dam (ppm)	5.3	-----	1.8
7. Month-End Water Storage Behind Prado Dam	738	-----	14,709
8. Month-End Water Storage in Recharge Facilities	19,444	-----	22,787
9. Water Storage Change in Recharge Facilities	4,927	(1,806)	11,911
10. Total Artificial Recharge	25,757	159,986	141,296
11. Monthly Mean Temperature at Santa Ana Fire Station (°F)	58.8	-----	56.7
12. Rainfall at FHQ (inches)	2.16	6.26	13.03

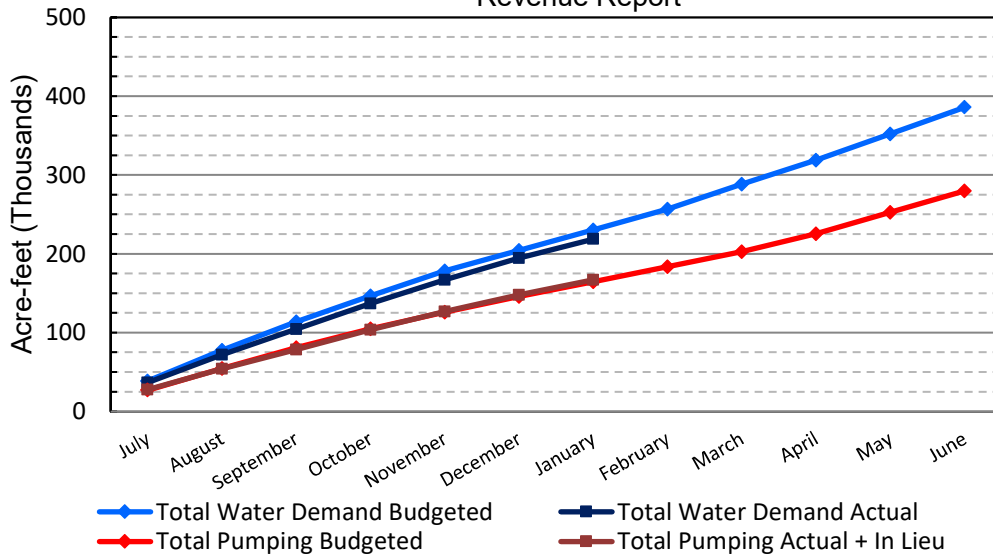
*** Note: Data are preliminary, subject to change

2/15/2024

Orange County Sanitation District Influent Flows Report

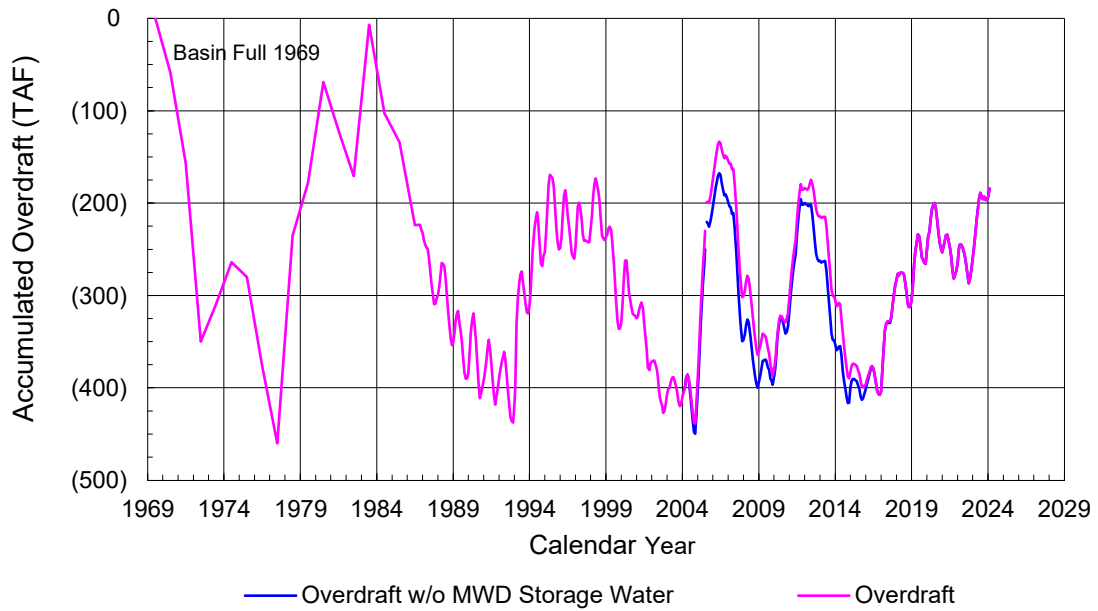


2023-24 Water Demands/Groundwater Pumping + In Lieu/RA Revenue Report

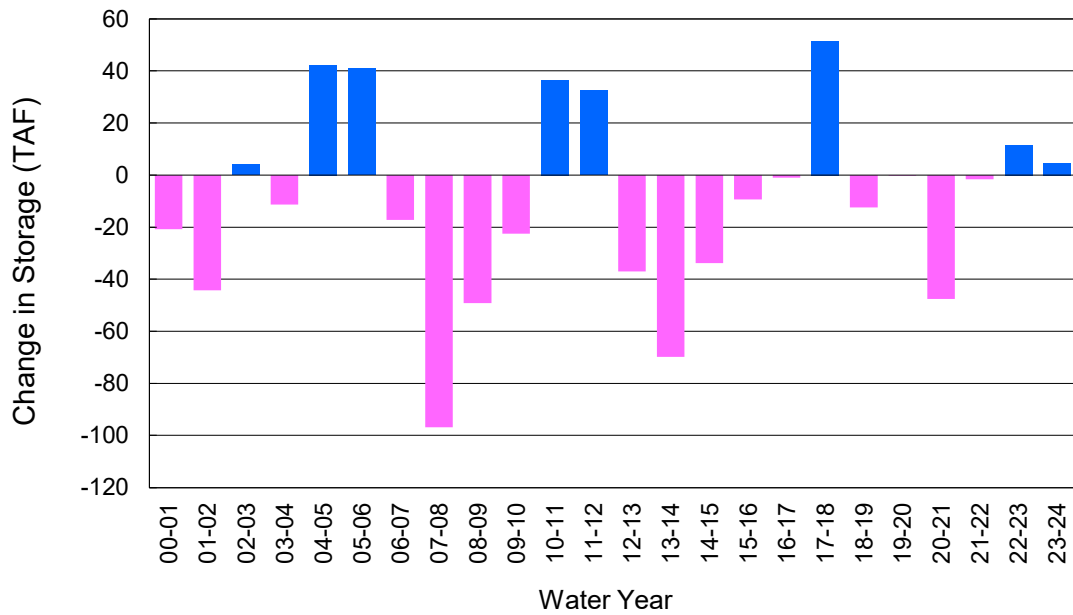


	Monthly		Accumulated Total for the Year			
	Budget	Actual	Budget	Actual	Difference	Percent
Total Water Demand	25,800	24,336	230,200	218,838	-11,362	95.06%
Total Pumping + In Lieu	18,600	19,221	164,400	166,942	2,542	101.55%
RA Revenue	\$8,593,200	\$8,879,889	\$75,952,800	\$77,127,329	\$1,174,529	101.55%

Accumulated Overdraft



YTD Change in Groundwater Storage in OCWD



PRODUCERS WATER USAGE SUMMARY

January 2024

(AF except BPP)

WATER AGENCY	Ground-water (1)	In Lieu	Reclaimed Water	Total Import (2)	Total Demand	2023-24 YTD Demand	2022-23 YTD Demand	YTD % Diff Demand	JAN 2024 BPP	2023-24 YTD BPP	2022-23 YTD BPP
Anaheim	2,557	0	0	1,130	3,688	32,136	32,786	98%	69.4%	51.8%	25.6%
Buena Park	768	0	0	1	769	7,314	7,400	99%	99.9%	91.2%	84.7%
East Orange County	0	0	0	38	38	483	471	102%	0.8%	0.4%	0.3%
Fountain Valley	548	0	25	0	573	5,673	5,479	104%	100.0%	100.0%	100.0%
Fullerton	818	0	0	228	1,046	12,508	13,022	96%	78.2%	75.5%	76.3%
Garden Grove	1,494	0	0	0	1,494	12,690	12,214	104%	100.0%	100.0%	70.3%
Golden State	994	0	0	403	1,398	12,808	12,527	102%	71.1%	62.1%	57.8%
West OC System	709	-	-	177	886	7,836	7,636	103%	na	na	na
East OC System	285	-	-	226	511	4,971	4,890	102%	na	na	na
Huntington Beach	1,393	0	0	196	1,589	14,398	14,553	99%	87.7%	84.6%	59.8%
Irvine Ranch	3,236	0	1,658	0	4,893	38,194	36,962	103%	100.0%	99.8%	99.6%
DRWF Clear	1,877	-	-	-	1,877	17,448	16,059	109%	na	na	na
DRWF Color	708	-	-	-	708	4,952	4,962	100%	na	na	na
Laguna Beach	0	0	0	208	208	1,854	1,883	na	0.0%	0.0%	17.8%
La Palma	110	0	0	0	110	1,006	1,000	101%	100.0%	100.0%	99.6%
Mesa Water (MW)	1,017	0	12	0	1,029	9,585	9,597	100%	100.0%	100.0%	99.9%
MW Clear	640	-	-	-	640	7,855	6,893	114%	na	na	na
MW Amber	377	-	-	-	377	1,262	2,205	57%	na	na	na
Newport Beach	611	0	2	195	808	7,809	8,186	95%	75.8%	82.6%	81.0%
Orange	1,484	0	0	25	1,509	14,403	14,378	100%	98.4%	87.0%	75.0%
OCWD (GAP)	109	0	0	0	109	1,032	844	122%	100.0%	100.0%	100.0%
Santa Ana	1,404	0	6	819	2,228	18,737	18,727	100%	63.2%	84.4%	66.1%
Seal Beach	203	0	0	1	204	1,803	1,730	104%	99.5%	99.7%	65.8%
Serrano	22	0	0	104	126	1,504	1,759	86%	17.7%	44.4%	68.6%
Tustin	592	0	0	44	636	6,078	6,004	101%	93.0%	69.9%	50.4%
Westminster	718	0	0	0	718	5,978	5,973	100%	100.0%	100.0%	96.3%
Yorba Linda	<u>914</u>	<u>0</u>	<u>0</u>	<u>15</u>	<u>930</u>	<u>10,821</u>	<u>10,568</u>	<u>102%</u>	<u>98.4%</u>	<u>84.8%</u>	<u>82.5%</u>
SUBTOTAL:	18,993	0	1,703	3,408	24,104	216,815	216,061	100%	84.9%	81.0%	69.5%
Other Producers (Est ~3% of Subtotal)	<u>227</u>	<u>0</u>	<u>0</u>	<u>4</u>	<u>232</u>	<u>2,023</u>	<u>3,518</u>	<u>57%</u>			
TOTAL:	19,221	0	1,703	3,412	24,336	218,838	219,580		84.9%	81.0%	69.5%
OCWD (Talbert Barrier)	0		1,329	0	1,329	11,377	13,283				
OCSA (GAP)	na		88	na	88	619	639				

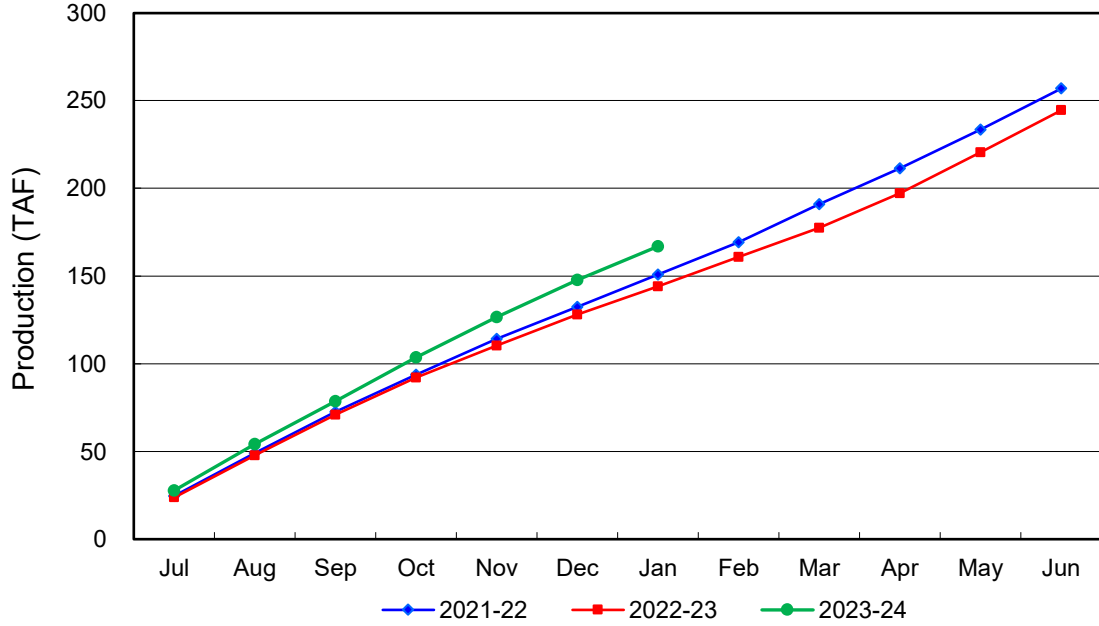
Estimated

(1) Excludes MWD CUP Withdrawals

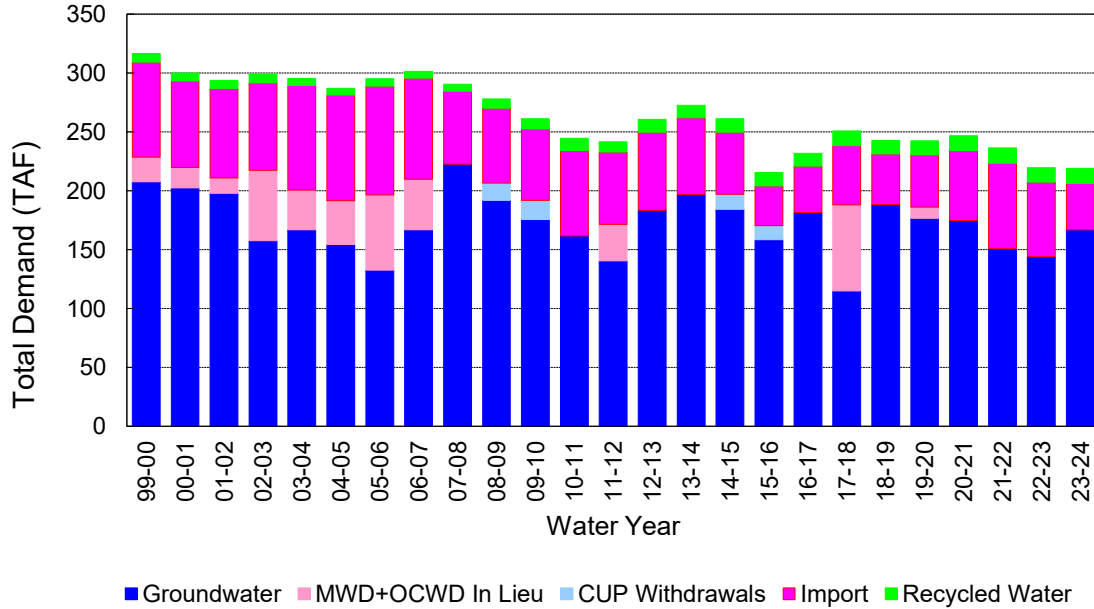
(2) Includes MWD CUP Withdrawals & In Lieu Water

2/15/2024 11:43

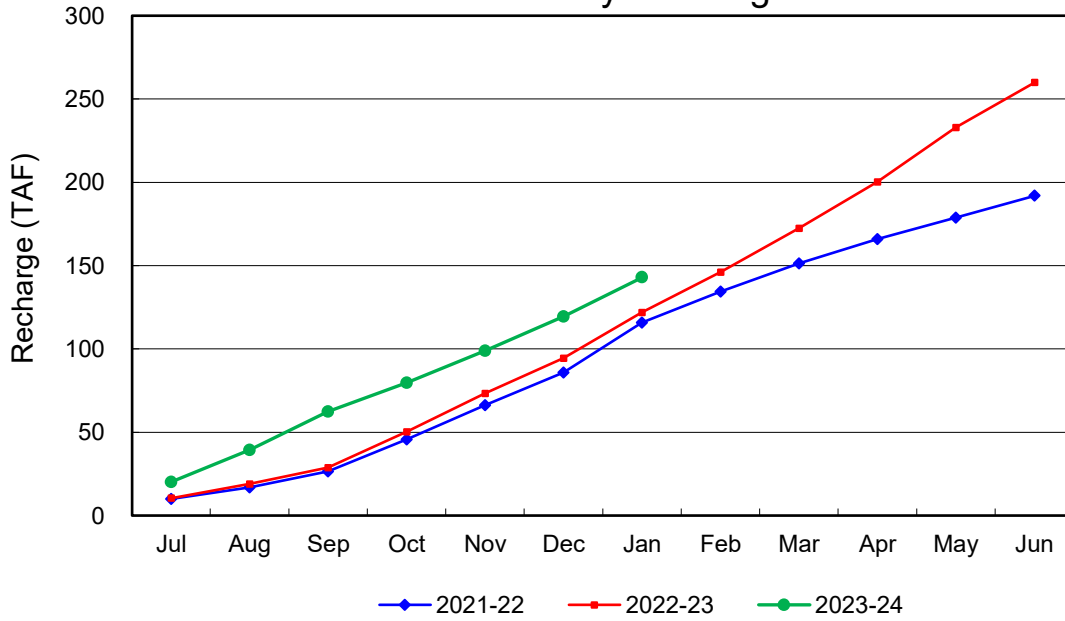
Annual Groundwater Production



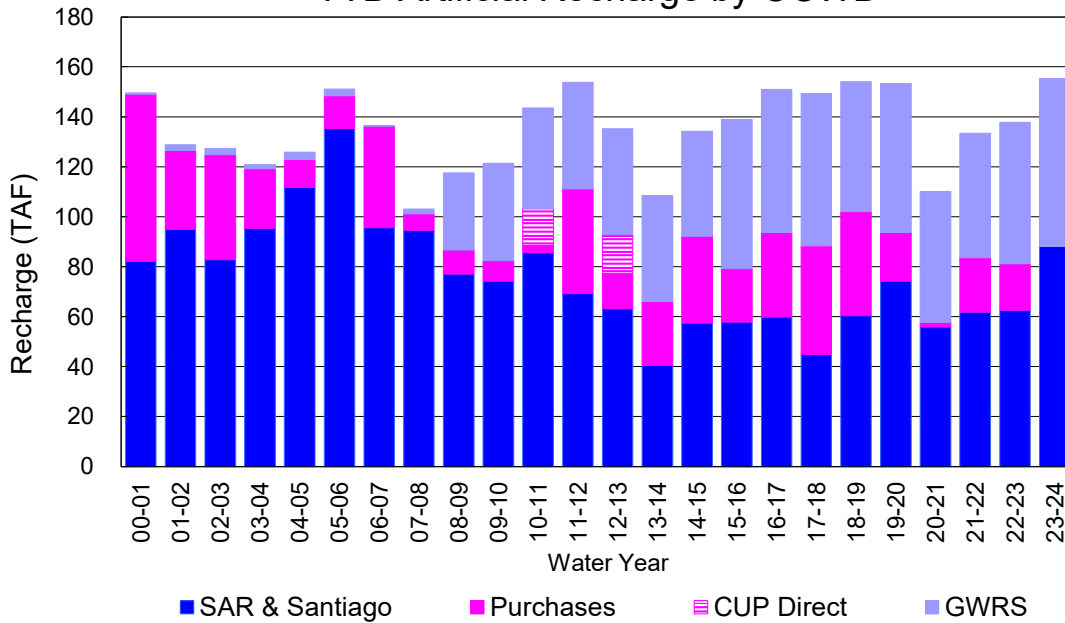
YTD Total Demand in OCWD



Annual Forebay Recharge



YTD Artificial Recharge by OCWD



RECHARGE AREAS REPORT

January 2024

	Percolation (AF)	Remarks
RIVER SYSTEM	5,134	83 cfs per day average perc
DESILTING SYSTEM	na	SAR
OFF-RIVER SYSTEM	1,677	SAR
WARNER SYSTEM	874	SAR
OLIVE BASIN	na	Passive System
ANAHEIM LAKE	1,270	SAR, Import Water
MINI-ANA LAKE	102	
MILLER BASIN	1,368	SAR
KRAEMER BASIN	647	
LA PALMA BASIN	5,425	GWRS
MIRALOMA BASIN	2,869	GWRS
LA JOLLA BASIN	421	SAR
PLACENTIA BASIN	na	
RAYMOND BASIN	na	
FIVE COVES BASIN	na	SAR
BURRIS BASIN	998	SAR
RIVER VIEW BASIN	134	SAR, Burris Pumping
FLETCHER BASIN	43	Local Runoff
SANTIAGO BASINS	2,494	SAR, Burris Pumping, Local Runoff
SANTIAGO CREEK	241	SAR, Burris Pumping, Local Runoff
TOTALS	23,697	
5-YR AVERAGE	26,265	

FLOWS TO RECHARGE AREAS (AF)	
Imperial Headgates (estimated)	19,184
GWRS	8,866
OC-28 (MWD)	7
OC-28a (MWD)	0
OC-59	0
Est'd local Forebay inflow below Imperial	807
Est'd local Santiago inflow (estimated)	516
Irvine lake releases (OC-13 MWD)	0
Villa Park Dam releases (estimated)	0
Precip at Warner Basin (inches)	2.16
Precip direct to open water surfaces	161
TOTAL INFLOW	29,541

LOSSES FROM RECHARGE AREAS (AF)	
Est'd SAR flow past Chapman Ave.	659
Est'd Santiago Cr. flow to SAR	44
Est'd flows past Raymond Basin	0
Calc'd evap (inches) Estimated	2.87
Est'd evaporative losses	214
TOTAL LOSSES	917

STORAGE CHANGES (AF)			
Facility	Begin	End	Net
Deep basins	6,413	8,630	2,217
Santiago Pits	8,104	10,814	2,710
River			
Off-river			
Irvine Lake			
TOTAL	14,517	19,444	4,927

SUMMARY (AF)	
TOTAL INFLOW	29,541
TOTAL LOSSES	917
STORAGE CHANGE	4,927
CALC'D PERCOLATION	23,697

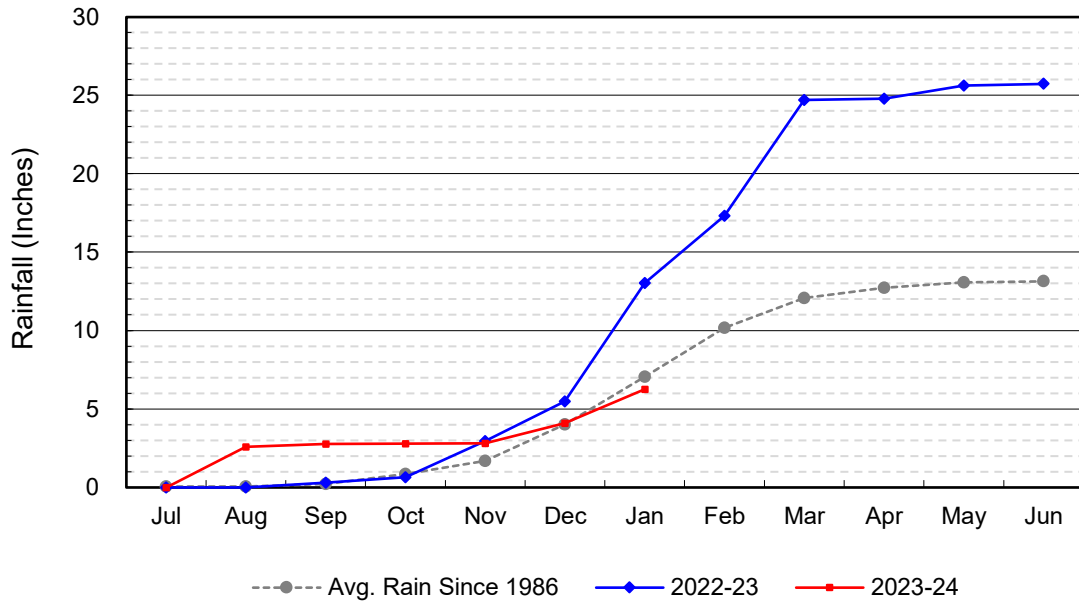
DEEP BASINS MONTHLY STATUS

January 2024

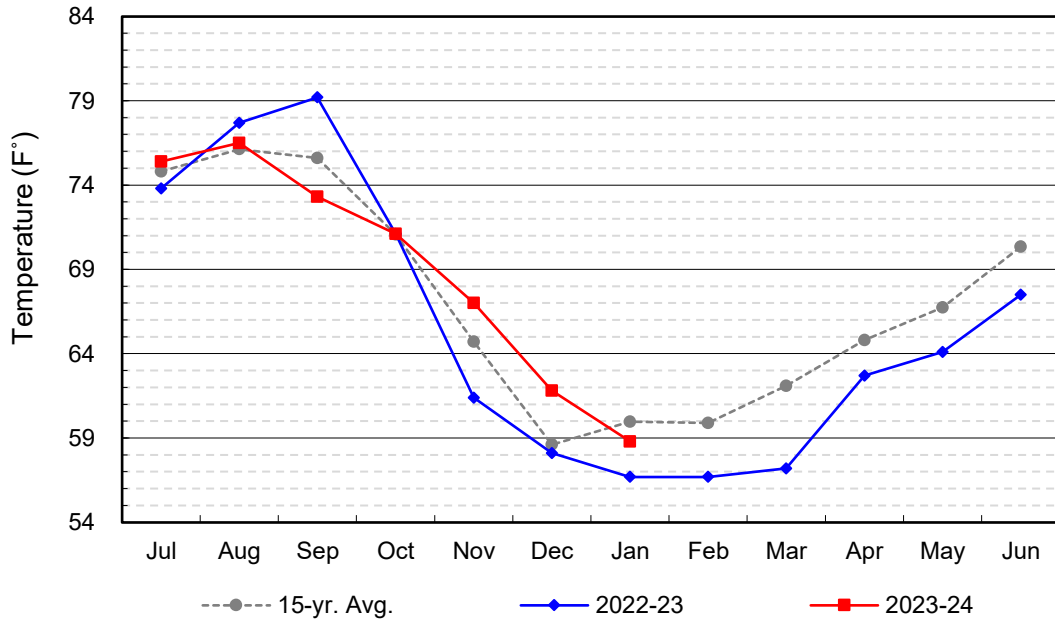
(values in acre-feet)

<i>Facility</i>	<i>Storage Start</i>	<i>Storage End</i>	<i>Maximum Storage</i>	<i>Total Perc</i>	<i>Max Perc</i>	<i>Avg Perc</i>	<i>Avg W.S. Elev</i>
Desilting Ponds	230	230	252	na	na	na	na
Fos-Huckleberry	531	562	628	na	na	na	na
Conrock Basin	579	603	661	na	na	na	na
Warner Basins	2,885	2,915	2,900	884	na	na	238
Olive Pit	48	45	95	na	na	na	210
Anaheim Lake	306	1,112	2,300	1,284	106	41	188
Mini-Anaheim Lk	0	6	10	103	14	3	221
Miller Basin	115	213	350	1,383	65	45	207
Kraemer Basin	0	368	1,055	647	76	21	174
La Palma Basin	68	94	101	5,425	188	175	218
Miraloma Basin	43	43	53	2,869	102	93	220
La Jolla Basin	0	0	20	426	27	14	201
Placentia Basin	0	0	200	na	na	na	na
Raymond Basin	0	0	200	na	na	na	na
Five Coves Basins	283	249	329	na	na	na	na
Burriss Pit	1,308	2,180	2,500	1,009	71	33	162
River View Basin	6	2	8	135	13	4	187
Fletcher Basin	11	8	15	43	5	1	188
Santiago (Bond)	5,474	7,012	8,312	2,522	147	81	256
Santiago (Blu Dia)	2,630	3,802	5,259	-	-	-	-
Totals	14,517	19,444	25,247	16,730			
Prado Dam	20	738	20,000				

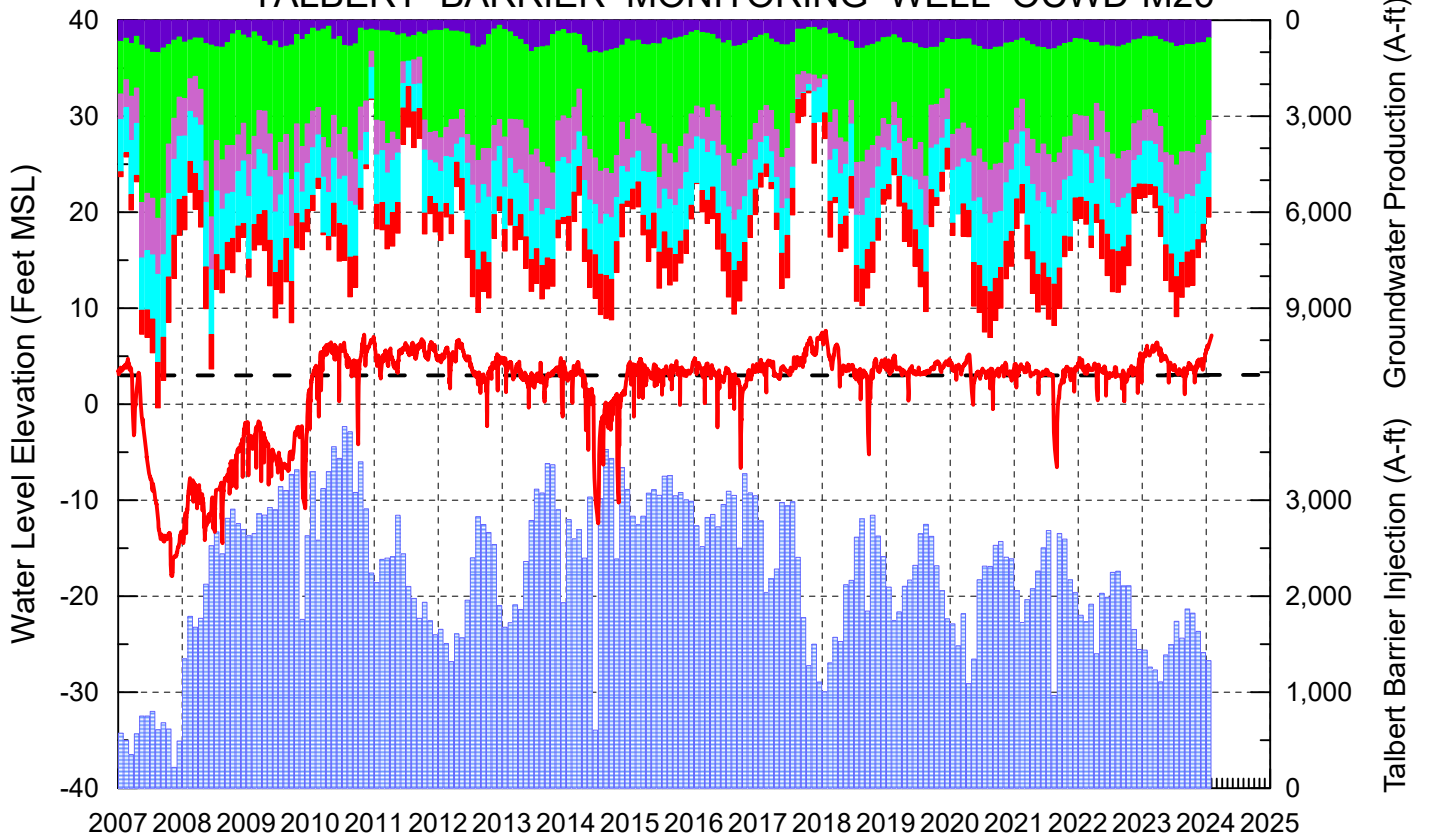
Cumulative Anaheim Field HQ Rainfall



Temperature at Santa Ana Fire Station



TALBERT BARRIER MONITORING WELL OCWD-M26



- Talbert/Lambda Aquifer Mergence Zone
Perforated Interval: 71 - 135 ft. bgs
- ▨ Talbert Barrier Injection
- Protective Level to Prevent Seawater Intrusion
- Fountain Valley Groundwater Production
- IRWD Groundwater Production
- Mesa Water Groundwater Production
- Huntington Beach Groundwater Production
- Newport Beach Groundwater Production

