

WATER RESOURCES SUMMARY

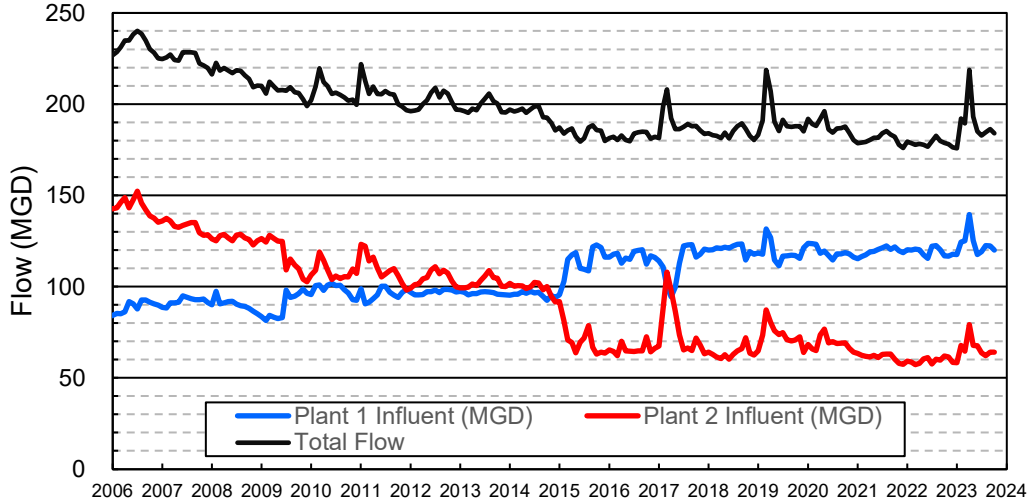
September 2023

INFLOWS & OUTFLOWS (acre-feet)	Total for Month	Year to Date - This Year Last Year	
BASIN SUPPLIES			
Water Purchases from MWD (excludes In Lieu)	0	0	0
Water into MWD Storage Account (excludes In Lieu)	0	0	0
SAR & Santiago Creek Flows (accounts for storage to/from recharge facilities)	17,156	43,060	14,203
GWRS Water to Forebay	6,227	21,056	15,327
GWRS Water to Mid-Basin Injection Wells	659	1,850	2,016
GWRS Water to Talbert Barrier	1,867	5,169	6,617
OC-44 and F. Valley Water to Talbert Barrier	0	3	6
Alamitos Barrier Water	200	612	721
Incidental Recharge (estimated)	1,100	3,500	3,800
Evaporation from Recharge Basins	(420)	(1,334)	(682)
River Flow Lost to Ocean	<u>0</u>	<u>(359)</u>	<u>0</u>
Total Groundwater Recharge	26,789	73,556	42,008
WATER PRODUCTION			
Groundwater Production	24,482	79,514	71,026
MWD Storage Program Withdrawals	<u>0</u>	<u>0</u>	<u>0</u>
Total Groundwater Production	24,482	79,514	71,026
BASIN BALANCE			
Change in Groundwater Storage	2,307	(5,959)	(29,018)
Change in Groundwater Storage excluding MWD Stored Water	2,307	(5,959)	(29,018)
Accumulated Overdraft	-----	194,961	287,020
Accumulated Overdraft excluding MWD Storage	-----	194,961	287,020
IN LIEU WATER			
OCWD In Lieu Purchases (MWD Cyclic Storage)	0	0	0
MWD In Lieu Storage	<u>0</u>	<u>0</u>	<u>0</u>
Total In Lieu	0	0	0
OTHER KEY INFORMATION			
1. MWD Water Deliveries to Producers	6,363	20,228	32,996
2. Basin Production Percentage	79.4%	79.7%	68.3%
3. Total Water Demand	32,656	105,458	109,590
4. Total GWRS Production	8,757	28,097	23,993
5. Green Acres Project Water	366	1,210	1,398
6. SAR Water Quality			
- Total Dissolved Solids (TDS) of SAR below Prado Dam (ppm)	720	-----	508
- Total Nitrogen of SAR below Prado Dam (ppm)	0.0	-----	2.2
7. Month-End Water Storage Behind Prado Dam	13	-----	0
8. Month-End Water Storage in Recharge Facilities	16,131	-----	7,749
9. Water Storage Change in Recharge Facilities	(2,645)	(5,119)	(3,127)
10. Total Artificial Recharge	25,689	70,056	38,208
11. Monthly Mean Temperature at Santa Ana Fire Station (°F)	73.3	-----	79.2
12. Rainfall at FHQ (inches)	0.17	2.76	0.29

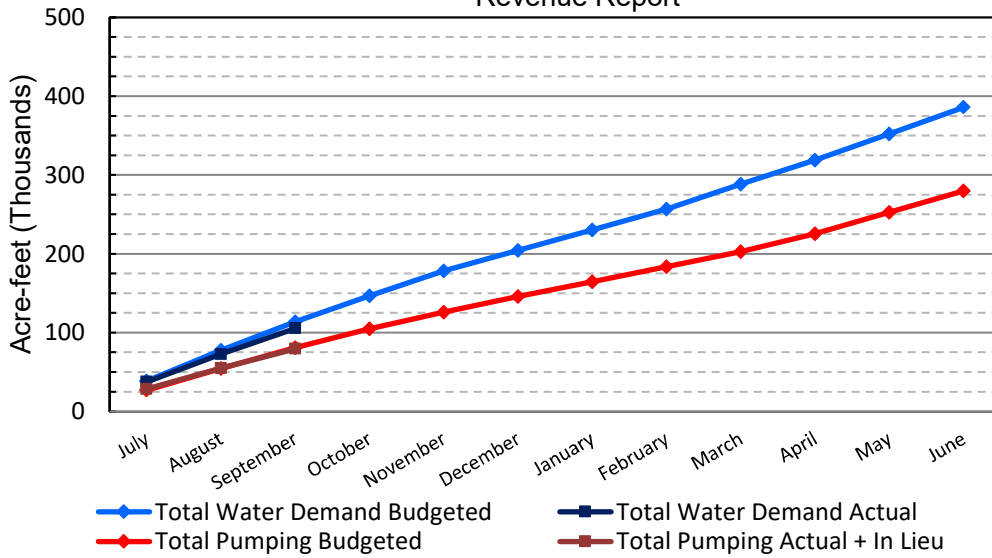
*** Note: Data are preliminary, subject to change

10/12/2023

Orange County Sanitation District Influent Flows Report

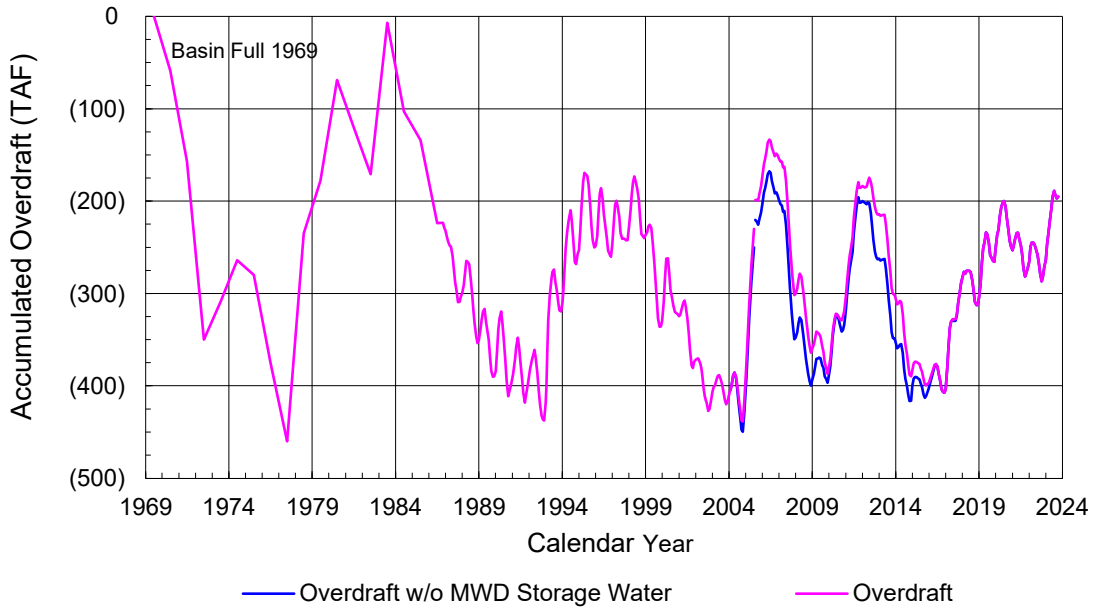


2023-24 Water Demands/Groundwater Pumping + In Lieu/RA Revenue Report

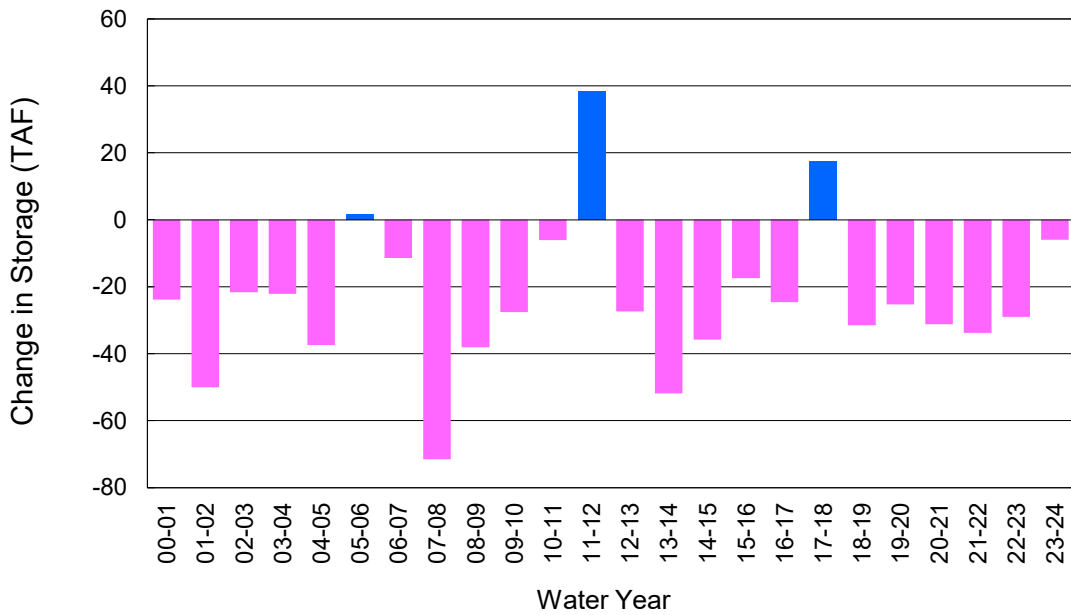


	Monthly		Accumulated Total for the Year			
	Budget	Actual	Budget	Actual	Difference	Percent
Total Water Demand	36,000	32,656	113,600	105,458	-8,142	92.83%
Total Pumping + In Lieu	26,500	24,482	80,900	79,514	-1,386	98.29%
RA Revenue	\$12,243,000	\$11,310,716	\$37,375,800	\$36,735,591	-\$640,209	98.29%

Accumulated Overdraft



YTD Change in Groundwater Storage in OCWD



PRODUCERS WATER USAGE SUMMARY

September 2023

(AF except BPP)

WATER AGENCY	Ground-water (1)	In Lieu	Reclaimed Water	Total Import (2)	Total Demand	2023-24 YTD Demand	2022-23 YTD Demand	YTD % Diff Demand	SEPT 2023 BPP	2023-24 YTD BPP	2022-23 YTD BPP
Anaheim	1,882	0	0	2,866	4,749	15,195	15,901	96%	39.6%	46.9%	27.5%
Buena Park	926	0	0	183	1,109	3,659	3,775	97%	83.5%	83.3%	82.1%
East Orange County	0	0	0	80	80	248	253	98%	0.2%	0.3%	0.2%
Fountain Valley	755	0	86	0	841	2,686	2,876	93%	100.0%	100.0%	100.0%
Fullerton	1,434	0	0	539	1,973	7,238	6,878	105%	72.7%	74.7%	75.5%
Garden Grove	1,874	0	0	0	1,874	5,874	6,111	96%	100.0%	100.0%	63.9%
Golden State	1,162	0	0	737	1,899	6,140	6,366	96%	61.2%	57.6%	62.8%
West OC System	876	-	-	304	1,180	3,726	3,806	98%	na	na	na
East OC System	286	-	-	433	719	2,414	2,560	94%	na	na	na
Huntington Beach	1,789	0	0	371	2,160	6,886	7,169	96%	82.8%	83.2%	60.4%
Irvine Ranch	3,996	0	1,569	10	5,574	17,294	17,115	101%	99.8%	99.7%	99.4%
DRWF Clear	2,646	-	-	-	2,646	8,219	8,063	102%	na	na	na
DRWF Color	698	-	-	-	698	2,140	2,132	100%	na	na	na
Laguna Beach	0	0	0	280	280	898	947	na	0.0%	0.0%	0.0%
La Palma	150	0	0	0	150	484	497	97%	100.0%	100.0%	99.3%
Mesa Water (MW)	1,358	0	90	0	1,448	4,645	4,881	95%	100.0%	100.0%	100.0%
MW Clear	1,165	-	-	-	1,165	3,693	2,796	132%	na	na	na
MW Amber	193	-	-	-	193	669	1,740	38%	na	na	na
Newport Beach	1,088	0	43	66	1,197	3,895	4,388	89%	94.2%	91.7%	91.0%
Orange	1,866	0	0	293	2,159	7,116	7,479	95%	86.4%	80.7%	55.3%
OCWD (GAP)	138	0	0	0	138	563	408	138%	100.0%	100.0%	100.0%
Santa Ana	2,507	0	23	241	2,771	8,764	9,071	97%	91.2%	91.3%	63.8%
Seal Beach	265	0	0	1	266	849	854	99%	99.5%	99.7%	30.9%
Serrano	147	0	0	75	222	818	829	99%	66.2%	68.9%	90.5%
Tustin	596	0	0	340	936	2,927	3,082	95%	63.7%	62.0%	47.8%
Westminster	859	0	0	0	859	2,770	2,900	96%	100.0%	100.0%	100.0%
Yorba Linda	<u>1,404</u>	<u>0</u>	<u>0</u>	<u>271</u>	<u>1,675</u>	<u>5,548</u>	<u>5,963</u>	<u>93%</u>	<u>83.8%</u>	<u>83.3%</u>	<u>81.1%</u>
SUBTOTAL:	24,194	0	1,811	6,354	32,360	104,498	107,745	97%	79.4%	79.7%	68.3%
Other Producers (Est ~3% of Subtotal)	<u>288</u>	<u>0</u>	<u>0</u>	<u>8</u>	<u>296</u>	<u>960</u>	<u>1,845</u>	<u>52%</u>			
TOTAL:	24,482	0	1,811	6,363	32,656	105,458	109,590		79.4%	79.7%	68.3%
OCWD (Talbert Barrier)	0		1,867	0	1,867	5,172	6,623				
OCSA (GAP)	na		124	na	124	389	236				

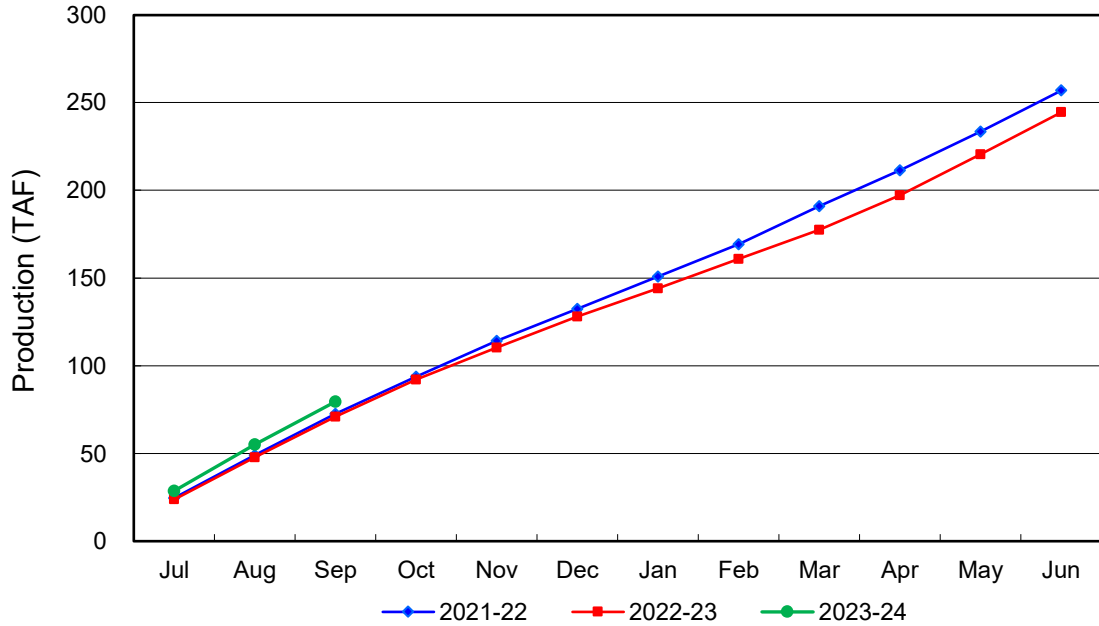
Estimated

(1) Excludes MWD CUP Withdrawals

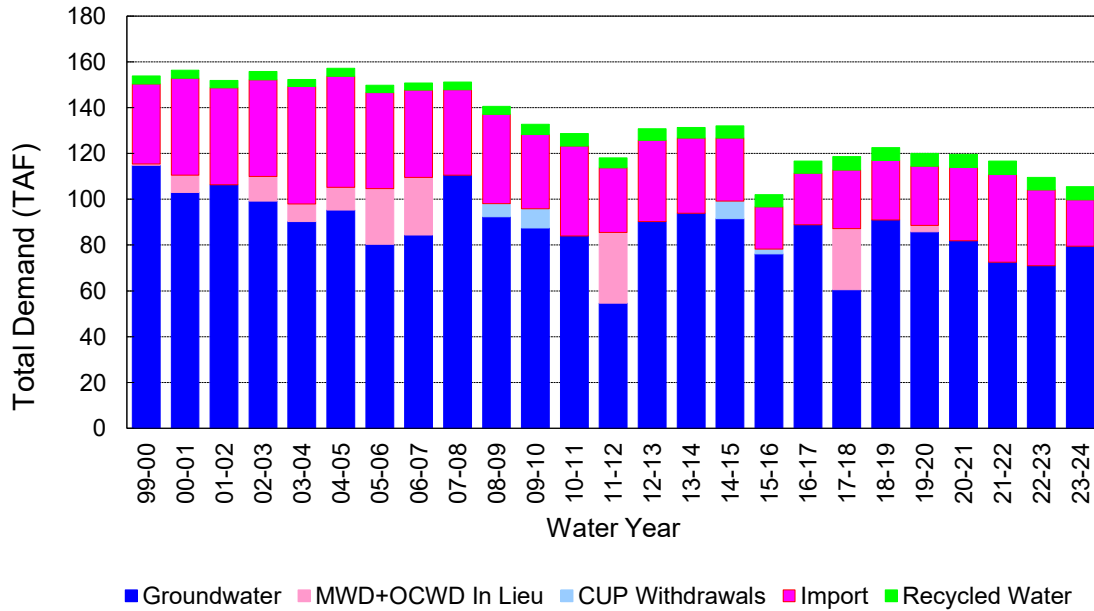
(2) Includes MWD CUP Withdrawals & In Lieu Water

10/12/2023 13:45

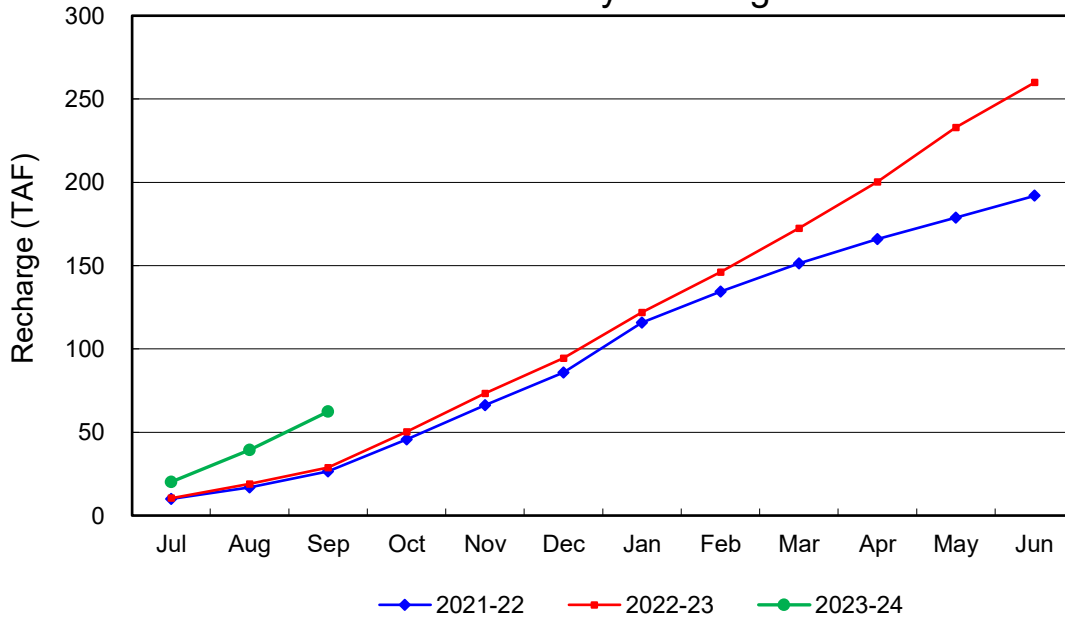
Annual Groundwater Production



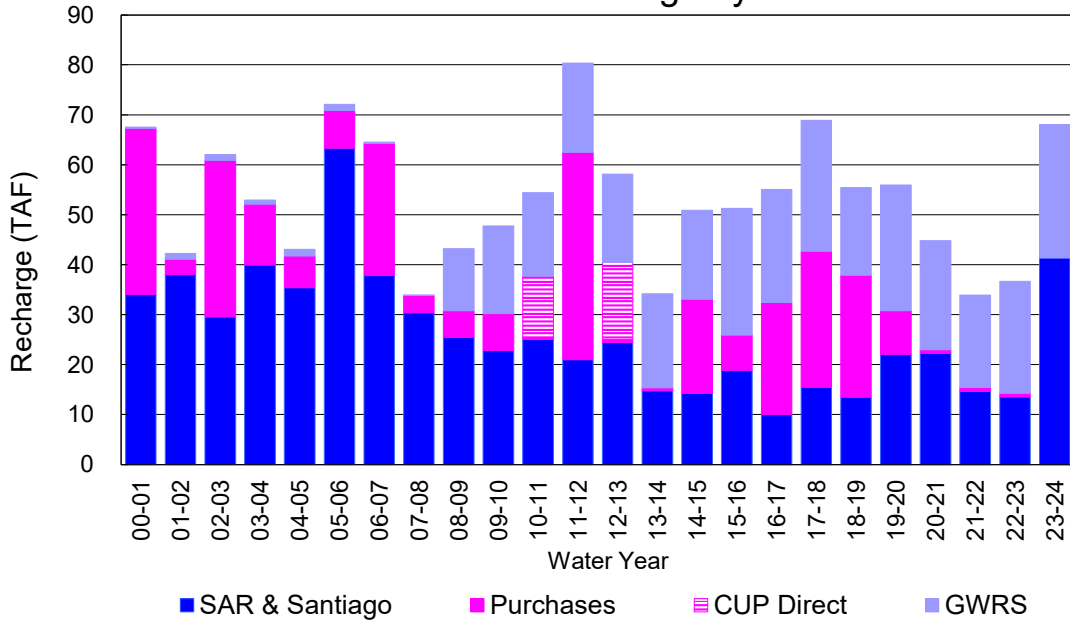
YTD Total Demand in OCWD



Annual Forebay Recharge



YTD Artificial Recharge by OCWD



RECHARGE AREAS REPORT

September 2023

	Percolation (AF)	Remarks
RIVER SYSTEM	4,524	76 cfs per day average perc
DESILTING SYSTEM	na	SAR
OFF-RIVER SYSTEM	1,173	SAR
WARNER SYSTEM	491	SAR
OLIVE BASIN	na	Passive System
ANAHEIM LAKE	1,155	SAR
MINI-ANA LAKE	182	SAR
MILLER BASIN	824	GWRS
KRAEMER BASIN	2,326	SAR
LA PALMA BASIN	4,012	GWRS
MIRA LOMA	1,371	GWRS
LA JOLLA BASIN	598	SAR
PLACENTIA BASIN	na	
RAYMOND BASIN	258	SAR
FIVE COVES BASIN	na	SAR
BURRIS BASIN	1,138	SAR
RIVER VIEW BASIN	301	SAR, Burris Pumping
FLETCHER BASIN	95	SAR, Burris Pumping
SANTIAGO BASINS	4,008	SAR, Burris Pumping
SANTIAGO CREEK	507	SAR, Burris Pumping
TOTALS	22,963	
5-YR AVERAGE	14,277	

FLOWS TO RECHARGE AREAS (AF)	
Imperial Headgates (estimated)	14,380
GWRS	6,227
OC-28 (MWD)	0
OC-28a (MWD)	0
OC-59	0
Est'd local Forebay inflow below Imperial	0
Est'd local Santiago inflow (estimated)	119
Irvine lake releases (OC-13 MWD)	0
Villa Park Dam releases (estimated)	0
Precip at Warner Basin (inches)	0.17
Precip direct to open water surfaces	12
TOTAL INFLOW	20,738

LOSSES FROM RECHARGE AREAS (AF)	
Est'd SAR flow past Chapman Ave.	0
Est'd Santiago Cr. flow to SAR	0
Est'd flows past Raymond Basin	0
Calc'd evap (inches) Estimated	5.92
Est'd evaporative losses	420
TOTAL LOSSES	420

STORAGE CHANGES (AF)			
Facility	Begin	End	Net
Deep basins	8,591	6,337	-2,254
Santiago Pits	10,185	9,794	-391
River			
Off-river			
Irvine Lake			
TOTAL	18,776	16,131	-2,645

SUMMARY (AF)	
TOTAL INFLOW	20,738
TOTAL LOSSES	420
STORAGE CHANGE	-2,645
CALC'D PERCOLATION	22,963

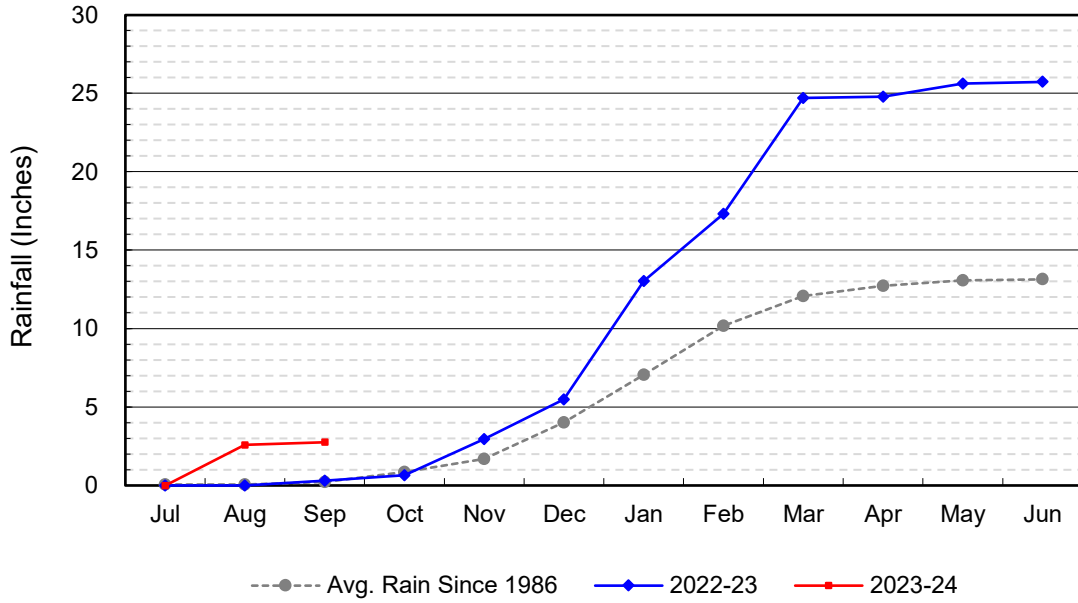
DEEP BASINS MONTHLY STATUS

September 2023

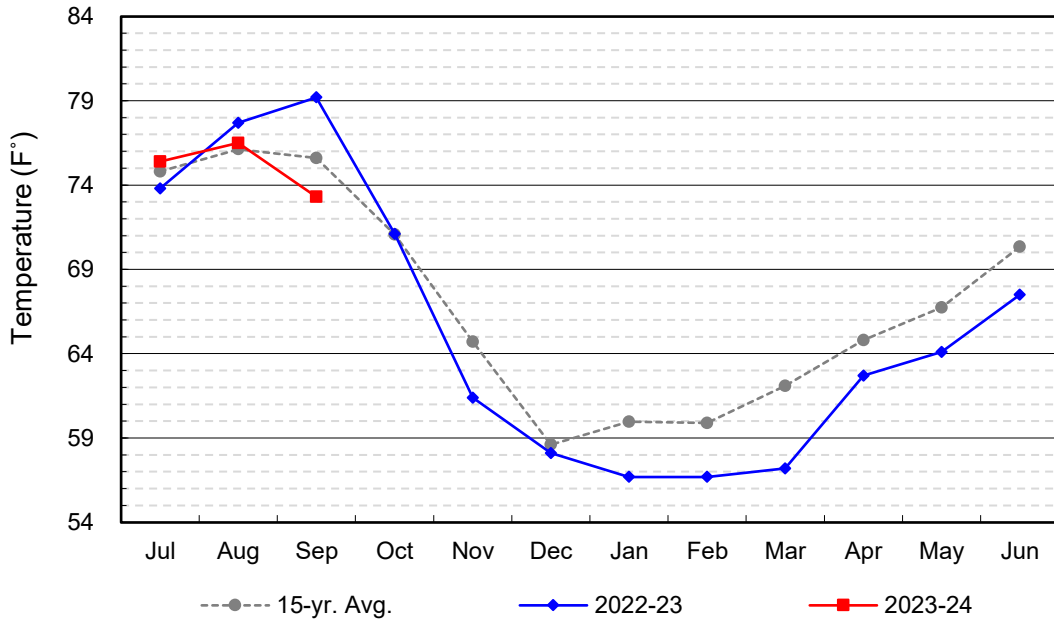
(values in acre-feet)

<i>Facility</i>	<i>Storage Start</i>	<i>Storage End</i>	<i>Maximum Storage</i>	<i>Total Perc</i>	<i>Max Perc</i>	<i>Avg Perc</i>	<i>Avg W.S. Elev</i>
Desilting Ponds	230	230	252	na	na	na	na
Fos-Huckleberry	573	526	628	na	na	na	na
Conrock Basin	609	550	661	na	na	na	na
Warner Basins	2,896	2,902	2,900	491	na	na	239
Olive Pit	38	16	95	na	na	na	205
Anaheim Lake	1,552	0	2,300	1,155	127	40	190
Mini-Anaheim Lk	8	0	10	182	20	6	221
Miller Basin	3	35	350	824	65	27	204
Kraemer Basin	126	120	1,055	2,326	140	81	191
La Palma Basin	65	81	101	4,012	144	134	219
Mira Loma	30	35	53	1,371	59	46	218
La Jolla Basin	2	0	20	598	42	21	201
Placentia Basin	0	0	200	na	na	na	na
Raymond Basin	5	100	200	258	na	na	na
Five Coves Basins	306	269	329	na	na	na	na
Burriss Pit	2,140	1,458	2,500	1,138	58	40	166
River View Basin	3	3	8	301	19	11	187
Fletcher Basin	5	12	15	95	6	3	188
Santiago (Bond)	6,652	6,442	8,312	4,008	211	140	270
Santiago (Blu Dia)	3,533	3,352	5,259	-	-	-	-
Totals	18,776	16,131	25,247	16,759			
Prado Dam	5,578	13	20,000				

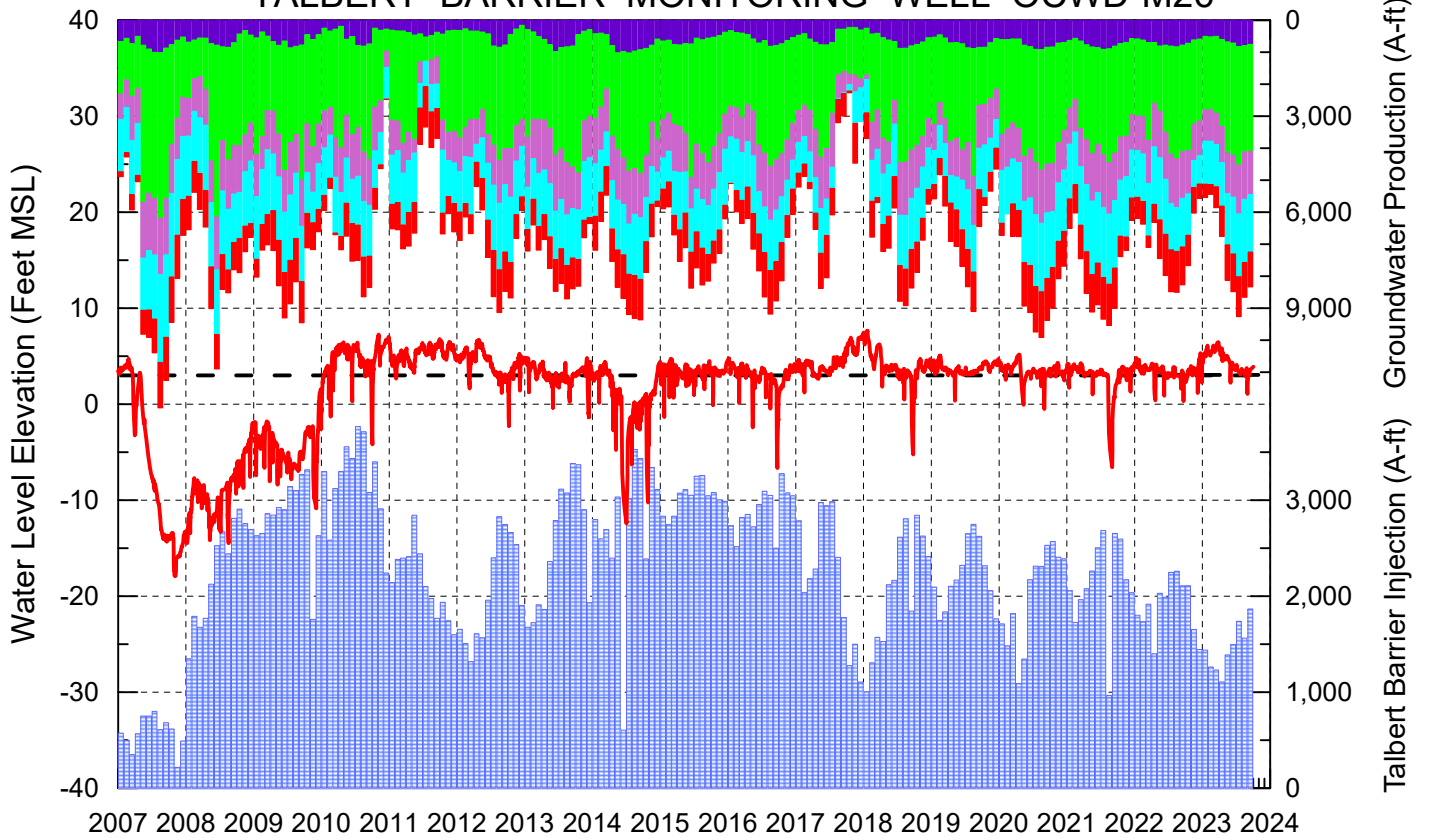
Cumulative Anaheim Field HQ Rainfall



Temperature at Santa Ana Fire Station



TALBERT BARRIER MONITORING WELL OCWD-M26



- Talbert/Lambda Aquifer Mergence Zone Perforated Interval: 71 - 135 ft. bgs
- ▨ Talbert Barrier Injection
- Protective Level to Prevent Seawater Intrusion
- Fountain Valley Groundwater Production
- IRWD Groundwater Production
- Mesa Water Groundwater Production
- Huntington Beach Groundwater Production
- Newport Beach Groundwater Production

