

WATER RESOURCES SUMMARY

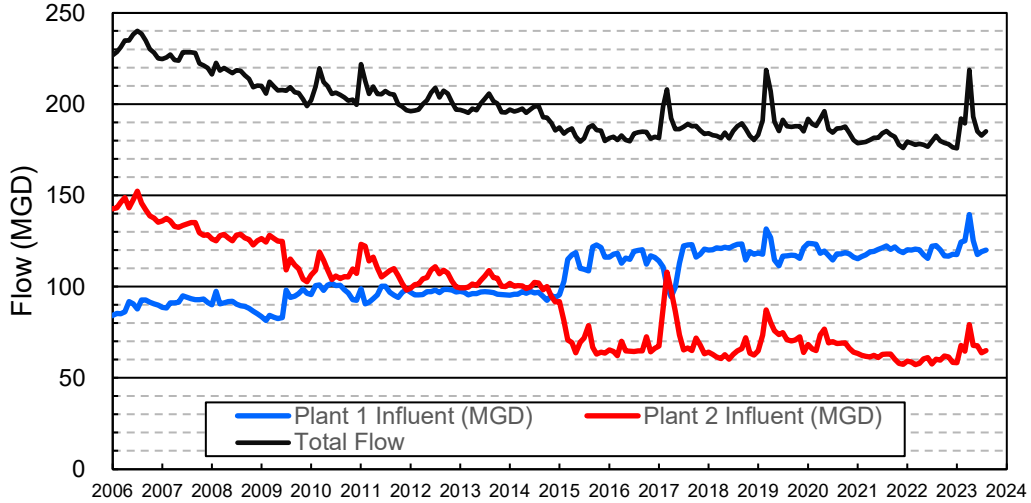
July 2023

| INFLOWS & OUTFLOWS (acre-feet) | Total for Month | Year to Date - This Year Last Year | |
|--|--------------------|--|----------|
| BASIN SUPPLIES | | | |
| Water Purchases from MWD (excludes In Lieu) | 0 | 0 | 0 |
| Water into MWD Storage Account (excludes In Lieu) | 0 | 0 | 0 |
| SAR & Santiago Creek Flows (accounts for storage to/from recharge facilities) | 12,528 | 12,528 | 5,533 |
| GWRS Water to Forebay | 8,119 | 8,119 | 5,258 |
| GWRS Water to Mid-Basin Injection Wells | 670 | 670 | 676 |
| GWRS Water to Talbert Barrier | 1,738 | 1,738 | 2,249 |
| OC-44 and F. Valley Water to Talbert Barrier | 0 | 0 | 0 |
| Alamitos Barrier Water | 200 | 200 | 248 |
| Incidental Recharge (estimated) | 3,500 | 3,500 | 1,200 |
| Evaporation from Recharge Basins | (432) | (432) | (259) |
| River Flow Lost to Ocean | <u>0</u> | <u>0</u> | <u>0</u> |
| Total Groundwater Recharge | 26,322 | 26,322 | 14,906 |
| WATER PRODUCTION | | | |
| Groundwater Production | 28,846 | 28,846 | 23,781 |
| MWD Storage Program Withdrawals | <u>0</u> | <u>0</u> | <u>0</u> |
| Total Groundwater Production | 28,846 | 28,846 | 23,781 |
| BASIN BALANCE | | | |
| Change in Groundwater Storage | (2,523) | (2,523) | (8,876) |
| Change in Groundwater Storage excluding MWD Stored Water | (2,523) | (2,523) | (8,876) |
| Accumulated Overdraft | ----- | 155,360 | 266,878 |
| Accumulated Overdraft excluding MWD Storage | ----- | 155,359 | 266,878 |
| IN LIEU WATER | | | |
| OCWD In Lieu Purchases (MWD Cyclic Storage) | 0 | 0 | 0 |
| MWD In Lieu Storage | <u>0</u> | <u>0</u> | <u>0</u> |
| Total In Lieu | 0 | 0 | 0 |
| OTHER KEY INFORMATION | | | |
| 1. MWD Water Deliveries to Producers | 6,837 | 6,837 | 11,221 |
| 2. Basin Production Percentage | 80.8% | 80.8% | 67.9% |
| 3. Total Water Demand | 37,652 | 37,652 | 36,661 |
| 4. Total GWRS Production | 10,537 | 112,487 | 8,191 |
| 5. Green Acres Project Water | 435 | 435 | 443 |
| 6. SAR Water Quality | | | |
| - Total Dissolved Solids (TDS) of SAR below Prado Dam (ppm) | 688 | ----- | 690 |
| - Total Nitrogen of SAR below Prado Dam (ppm) | 2.8 | ----- | 3.6 |
| 7. Month-End Water Storage Behind Prado Dam | 1 | ----- | 0 |
| 8. Month-End Water Storage in Recharge Facilities | 15,233 | ----- | 8,905 |
| 9. Water Storage Change in Recharge Facilities | (6,017) | (6,017) | (1,971) |
| 10. Total Artificial Recharge | 22,822 | 22,822 | 13,706 |
| 11. Monthly Mean Temperature at Santa Ana Fire Station (°F) | 75.4 | ----- | 73.8 |
| 12. Rainfall at FHQ (inches) | 0.00 | 0.00 | 0.00 |

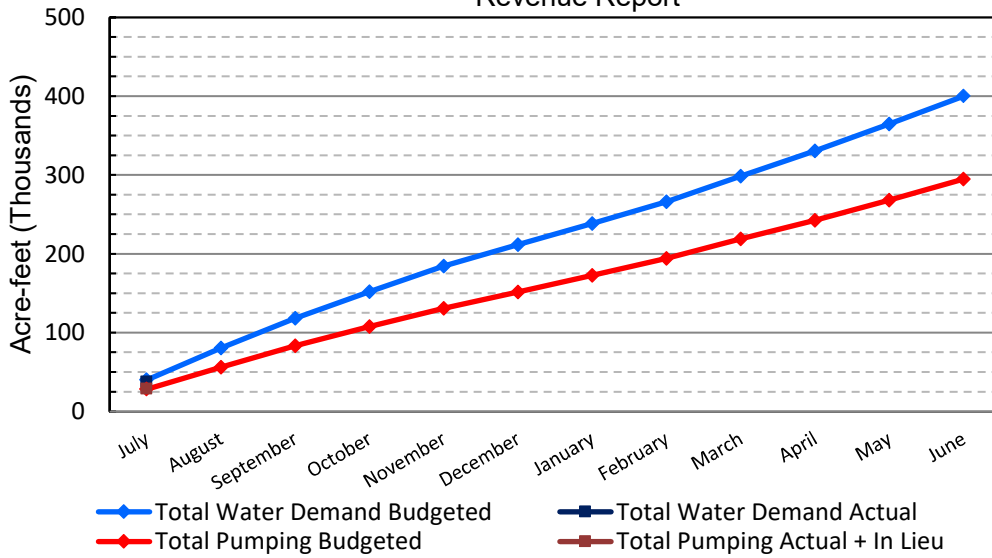
*** Note: Data are preliminary, subject to change

8/10/2023

Orange County Sanitation District Influent Flows Report

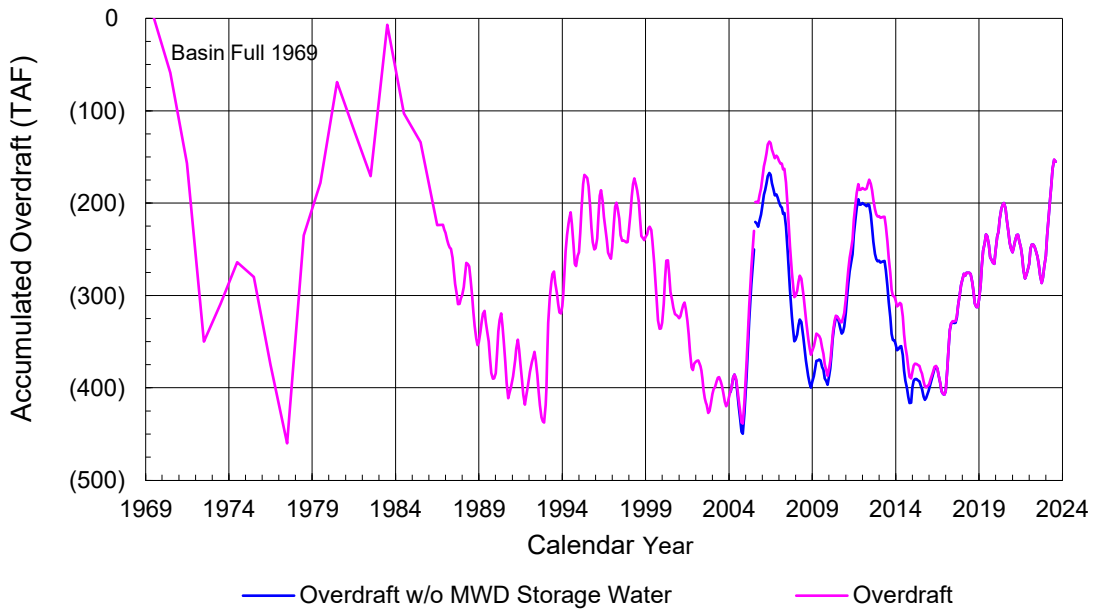


2022-23 Water Demands/Groundwater Pumping + In Lieu/RA Revenue Report

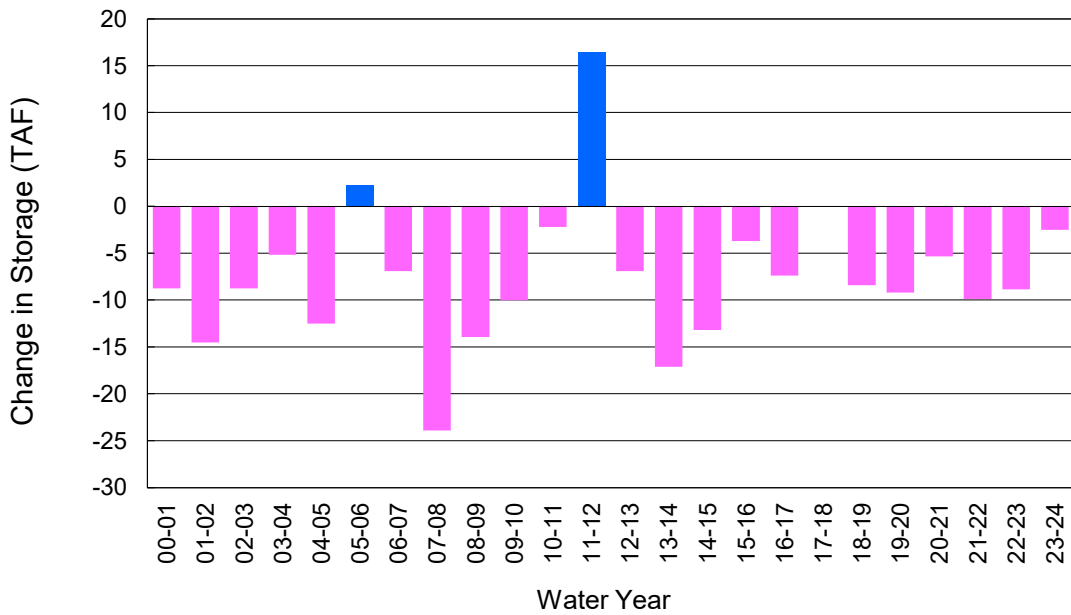


| | Monthly | | Accumulated Total for the Year | | | |
|-------------------------|--------------|--------------|--------------------------------|--------------|------------|---------|
| | Budget | Actual | Budget | Actual | Difference | Percent |
| Total Water Demand | 40,200 | 37,652 | 40,200 | 37,652 | -2,548 | 93.66% |
| Total Pumping + In Lieu | 28,400 | 28,846 | 28,400 | 28,846 | 446 | 101.57% |
| RA Revenue | \$13,120,800 | \$13,326,778 | \$13,120,800 | \$13,326,778 | \$205,978 | 101.57% |

Accumulated Overdraft



YTD Change in Groundwater Storage in OCWD



PRODUCERS WATER USAGE SUMMARY

July 2023

(AF except BPP)

| WATER AGENCY | Ground-water (1) | In Lieu | Reclaimed Water | Total Import (2) | Total Demand | 2023-24 YTD Demand | 2022-23 YTD Demand | YTD % Diff Demand | JUL 2023 BPP | 2023-24 YTD BPP | 2022-23 YTD BPP |
|--|------------------|----------|-----------------|------------------|---------------|--------------------|--------------------|-------------------|--------------|-----------------|-----------------|
| Anaheim | 2,775 | 0 | 0 | 2,511 | 5,286 | 5,286 | 5,091 | 104% | 52.5% | 52.5% | 30.8% |
| Buena Park | 1,083 | 0 | 0 | 222 | 1,305 | 1,305 | 1,257 | 104% | 83.0% | 83.0% | 81.4% |
| East Orange County | 0 | 0 | 0 | 82 | 82 | 82 | 84 | 98% | 0.4% | 0.4% | 0.0% |
| Fountain Valley | 824 | 0 | 134 | 0 | 958 | 958 | 980 | 98% | 100.0% | 100.0% | 100.0% |
| Fullerton | 2,442 | 0 | 0 | 720 | 3,161 | 3,161 | 2,293 | 138% | 77.2% | 77.2% | 75.7% |
| Garden Grove | 2,046 | 0 | 0 | 0 | 2,046 | 2,046 | 2,070 | 99% | 100.0% | 100.0% | 58.5% |
| Golden State | 1,166 | 0 | 0 | 1,011 | 2,177 | 2,177 | 2,147 | 101% | 53.6% | 53.6% | 62.7% |
| West OC System | 846 | - | - | 451 | 1,297 | 1,297 | 1,272 | 102% | na | na | na |
| East OC System | 321 | - | - | 559 | 880 | 880 | 875 | 101% | na | na | na |
| Huntington Beach | 1,800 | 0 | 0 | 300 | 2,100 | 2,100 | 2,451 | 86% | 85.7% | 85.7% | 58.8% |
| Irvine Ranch | 4,384 | 0 | 1,643 | 10 | 6,037 | 6,037 | 5,631 | 107% | 99.8% | 99.8% | 99.4% |
| DRWF Clear | 2,977 | - | - | - | 2,977 | 2,977 | 2,643 | 113% | na | na | na |
| DRWF Color | 723 | - | - | - | 723 | 723 | 730 | 99% | na | na | na |
| Laguna Beach | 0 | 0 | 0 | 250 | 250 | 250 | 327 | na | 0.0% | 0.0% | 0.0% |
| La Palma | 168 | 0 | 0 | 0 | 168 | 168 | 167 | 101% | 100.0% | 100.0% | 98.5% |
| Mesa Water (MW) | 1,523 | 0 | 101 | 0 | 1,624 | 1,624 | 1,673 | 97% | 100.0% | 100.0% | 100.0% |
| MW Clear | 1,433 | - | - | - | 1,433 | 1,433 | 973 | 147% | na | na | na |
| MW Amber | 89 | - | - | - | 89 | 89 | 577 | 15% | na | na | na |
| Newport Beach | 1,251 | 0 | 66 | 14 | 1,331 | 1,331 | 1,591 | 84% | 98.9% | 98.9% | 86.7% |
| Orange | 2,006 | 0 | 0 | 611 | 2,617 | 2,617 | 2,519 | 104% | 76.6% | 76.6% | 51.7% |
| OCWD (GAP) | 229 | 0 | 0 | 0 | 229 | 229 | 131 | 174% | 100.0% | 100.0% | 100.0% |
| Santa Ana | 2,745 | 0 | 25 | 257 | 3,027 | 3,027 | 3,041 | 100% | 91.5% | 91.5% | 63.4% |
| Seal Beach | 297 | 0 | 0 | 1 | 298 | 298 | 304 | 98% | 99.8% | 99.8% | 0.1% |
| Serrano | 225 | 0 | 0 | 60 | 285 | 285 | 287 | 99% | 79.1% | 79.1% | 91.6% |
| Tustin | 578 | 0 | 0 | 434 | 1,012 | 1,012 | 1,042 | 97% | 57.1% | 57.1% | 46.7% |
| Westminster | 973 | 0 | 0 | 0 | 973 | 973 | 996 | 98% | 100.0% | 100.0% | 100.0% |
| Yorba Linda | <u>1,687</u> | <u>0</u> | <u>0</u> | <u>347</u> | <u>2,034</u> | <u>2,034</u> | <u>2,034</u> | <u>100%</u> | <u>83.0%</u> | <u>83.0%</u> | <u>81.2%</u> |
| SUBTOTAL: | 28,202 | 0 | 1,970 | 6,828 | 37,000 | 37,000 | 36,117 | 102% | 80.8% | 80.8% | 67.9% |
| Other Producers (Est ~3% of Subtotal) | <u>643</u> | <u>0</u> | <u>0</u> | <u>9</u> | <u>652</u> | <u>652</u> | <u>545</u> | <u>120%</u> | | | |
| TOTAL: | 28,846 | 0 | 1,970 | 6,837 | 37,652 | 37,652 | 36,661 | | 80.8% | 80.8% | 67.9% |
| OCWD (Talbert Barrier) | 0 | | 1,738 | 0 | 1,738 | 1,738 | 2,249 | | | | |
| OCSA (GAP) | na | | 108 | na | 108 | 108 | 27 | | | | |

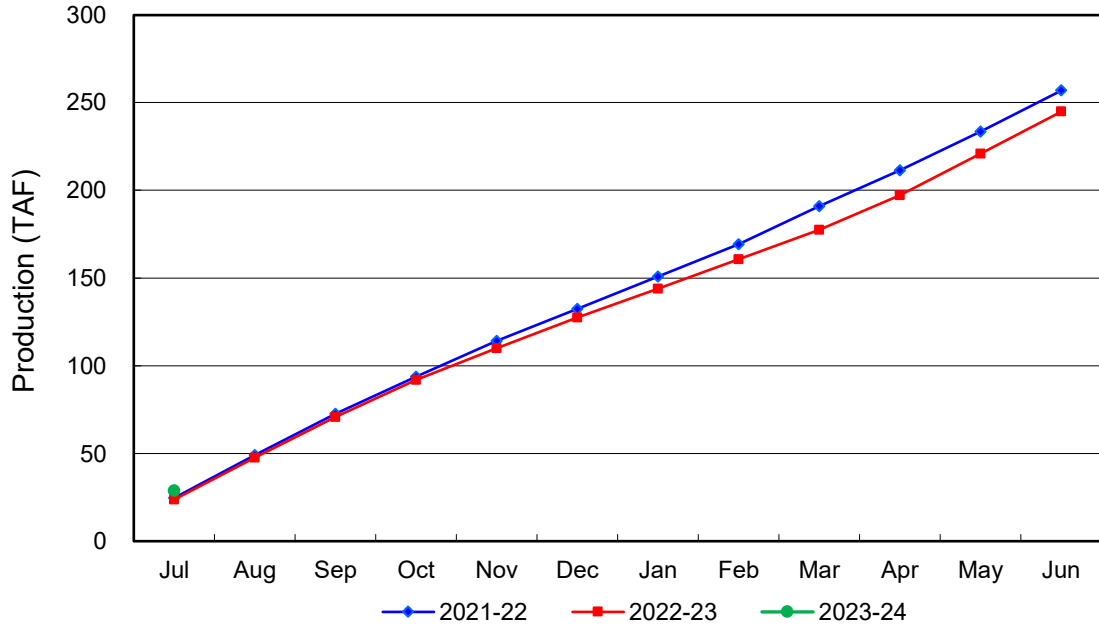
Estimated

(1) Excludes MWD CUP Withdrawals

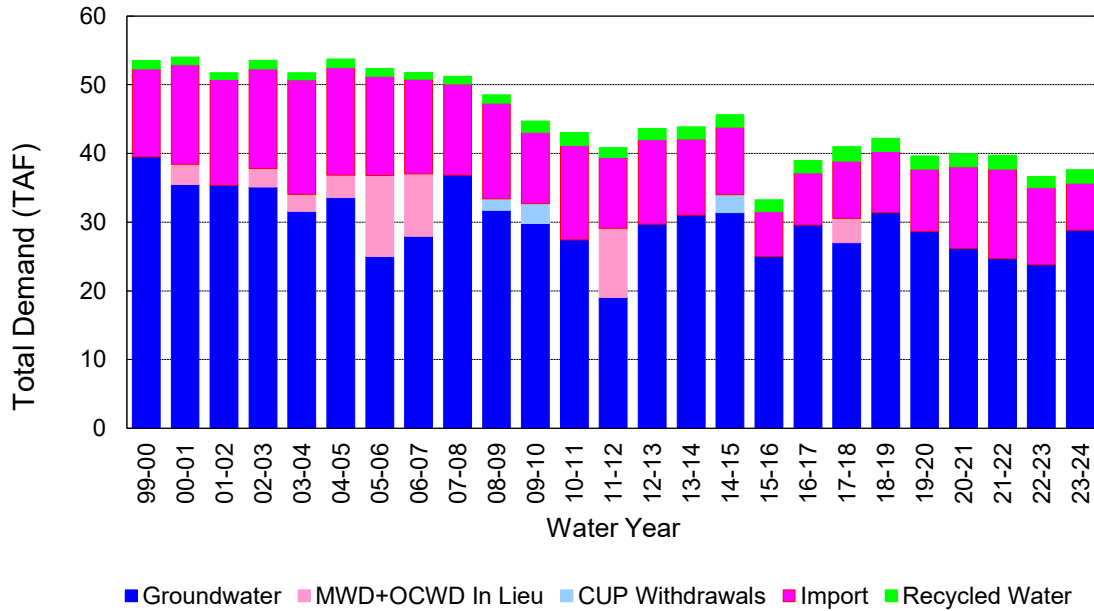
(2) Includes MWD CUP Withdrawals & In Lieu Water

8/10/2023 15:29

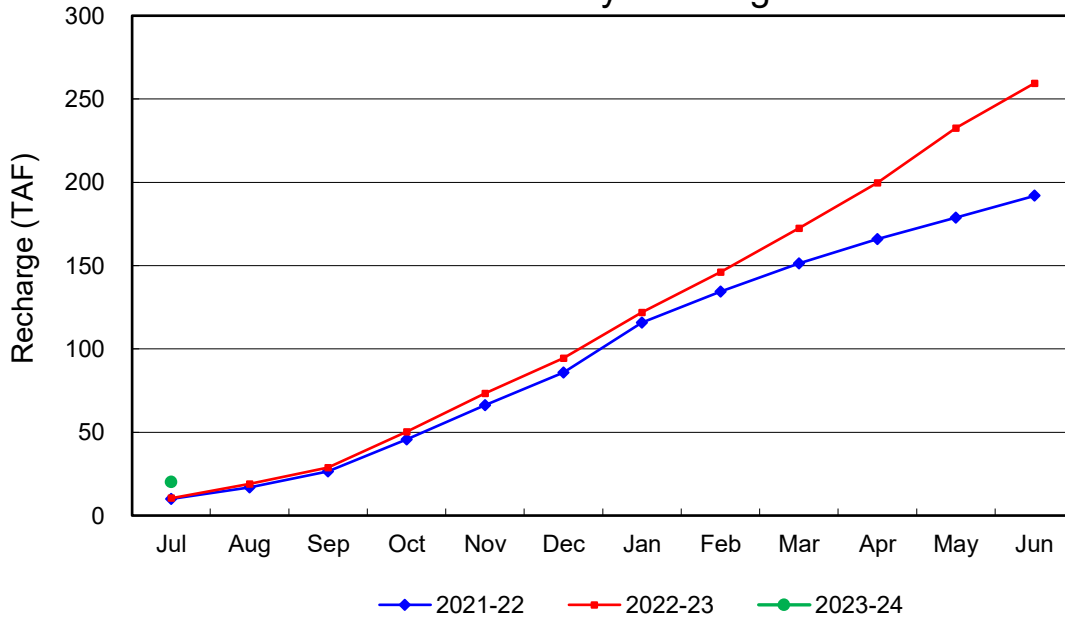
Annual Groundwater Production



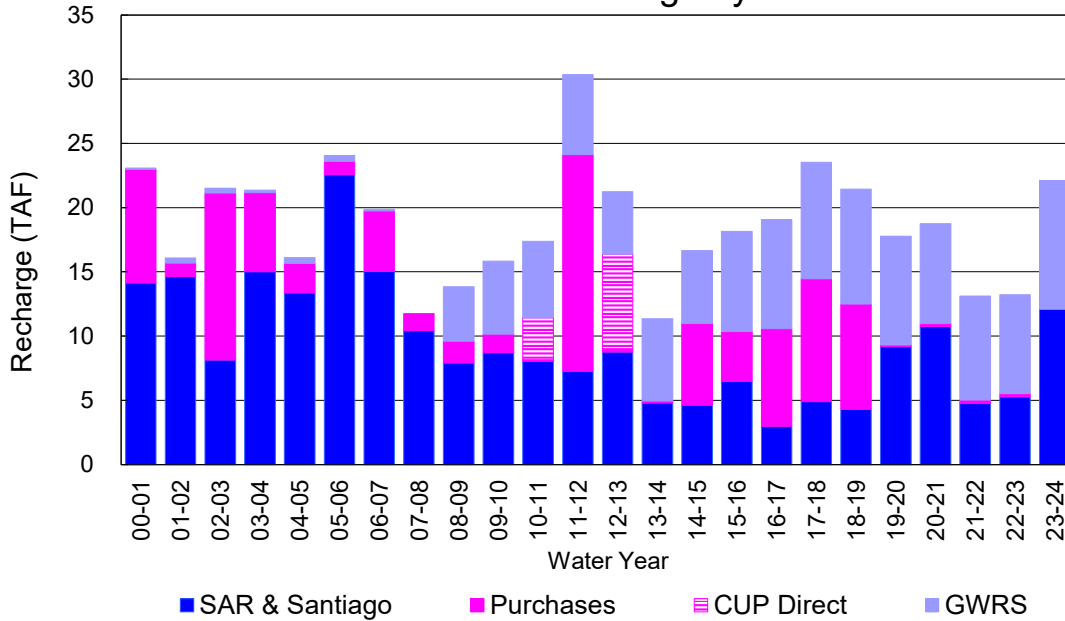
YTD Total Demand in OCWD



Annual Forebay Recharge



YTD Artificial Recharge by OCWD



RECHARGE AREAS REPORT

July 2023

| | Percolation (AF) | Remarks |
|---------------------|------------------|-----------------------------|
| RIVER SYSTEM | 4,948 | 80 cfs per day average perc |
| DESILTING SYSTEM | na | SAR |
| OFF-RIVER SYSTEM | 0 | |
| WARNER SYSTEM | 824 | SAR |
| OLIVE BASIN | na | Passive System |
| ANAHEIM LAKE | 227 | SAR |
| MINI-ANA LAKE | 0 | |
| MILLER BASIN | 2,399 | GWRS, SAR |
| KRAEMER BASIN | 60 | SAR |
| LA PALMA BASIN | 5,393 | GWRS |
| MIRA LOMA | 1,399 | GWRS |
| LA JOLLA BASIN | 565 | SAR |
| PLACENTIA BASIN | na | |
| RAYMOND BASIN | 383 | SAR |
| FIVE COVES BASIN | na | |
| BURRIS BASIN | 958 | SAR |
| RIVER VIEW BASIN | 0 | |
| FLETCHER BASIN | 0 | |
| SANTIAGO BASINS | 3,059 | SAR |
| SANTIAGO CREEK | 0 | |
| TOTALS | 20,215 | |
| 5-YR AVERAGE | 14,366 | |

| FLOWS TO RECHARGE AREAS (AF) | |
|---|---------------|
| Imperial Headgates (estimated) | 6,388 |
| GWRS | 8,119 |
| OC-28 (MWD) | 0 |
| OC-28a (MWD) | 0 |
| OC-59 | 0 |
| Est'd local Forebay inflow below Imperial | 0 |
| Est'd local Santiago inflow (estimated) | 123 |
| Irvine lake releases (OC-13 MWD) | 0 |
| Villa Park Dam releases (estimated) | 0 |
| Precip at Warner Basin (inches) | 0.00 |
| Precip direct to open water surfaces | 0 |
| TOTAL INFLOW | 14,630 |

| LOSSES FROM RECHARGE AREAS (AF) | |
|----------------------------------|------------|
| Est'd SAR flow past Chapman Ave. | 0 |
| Est'd Santiago Cr. flow to SAR | 0 |
| Est'd flows past Raymond Basin | 0 |
| Calc'd evap (inches) Estimated | 7.16 |
| Est'd evaporative losses | 432 |
| TOTAL LOSSES | 432 |

| STORAGE CHANGES (AF) | | | |
|----------------------|---------------|---------------|---------------|
| Facility | Begin | End | Net |
| Deep basins | 9,363 | 6,274 | -3,089 |
| Santiago Pits | 11,887 | 8,959 | -2,928 |
| River | | | |
| Off-river | | | |
| Irvine Lake | | | |
| TOTAL | 21,250 | 15,233 | -6,017 |

| SUMMARY (AF) | |
|--------------------|--------|
| TOTAL INFLOW | 14,630 |
| TOTAL LOSSES | 432 |
| STORAGE CHANGE | -6,017 |
| CALC'D PERCOLATION | 20,215 |

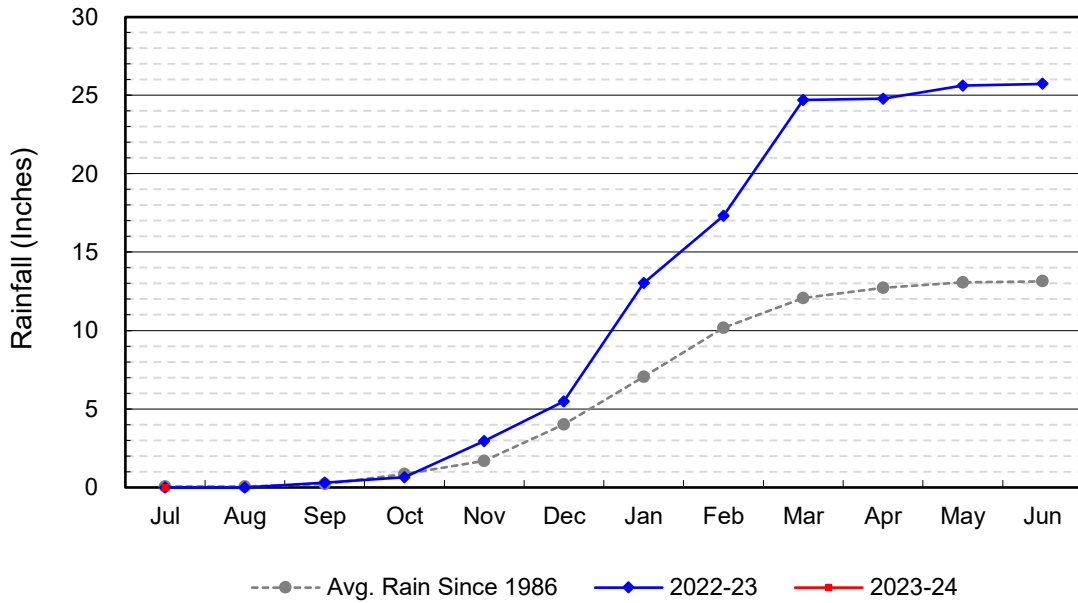
DEEP BASINS MONTHLY STATUS

July 2023

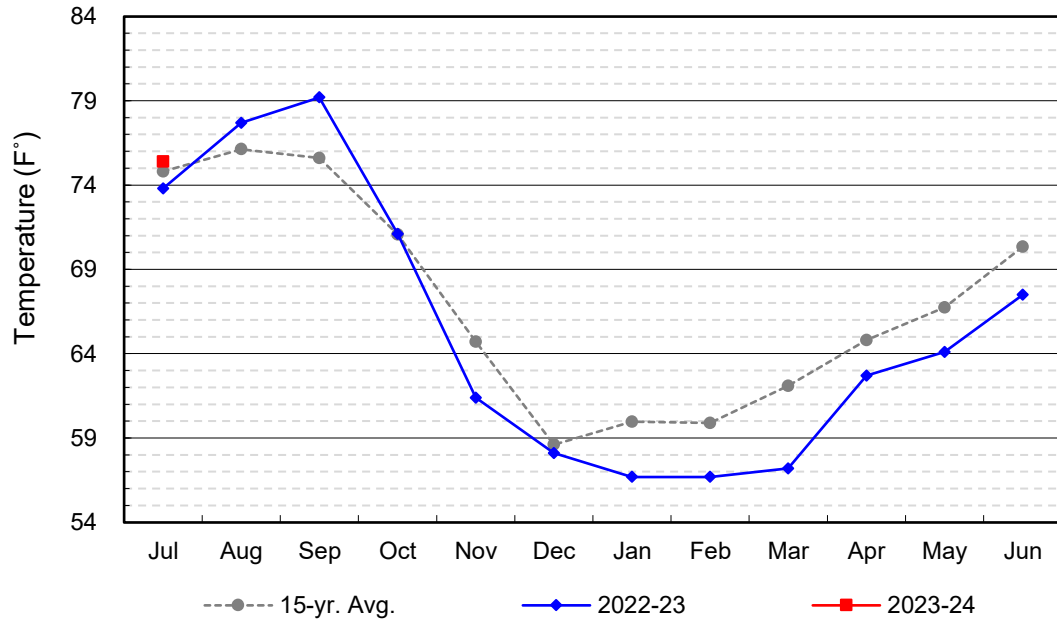
(values in acre-feet)

| <i>Facility</i> | <i>Storage Start</i> | <i>Storage End</i> | <i>Maximum Storage</i> | <i>Total Perc</i> | <i>Max Perc</i> | <i>Avg Perc</i> | <i>Avg W.S. Elev</i> |
|--------------------|--------------------------|------------------------|----------------------------|-----------------------|---------------------|---------------------|--------------------------|
| Desilting Ponds | 220 | 200 | 252 | na | na | na | na |
| Fos-Huckleberry | 533 | 537 | 628 | na | na | na | na |
| Conrock Basin | 549 | 552 | 661 | na | na | na | na |
| Warner Basins | 2,891 | 2,902 | 2,900 | 824 | na | na | 239 |
| Olive Pit | 44 | 0 | 95 | na | na | na | 194 |
| Anaheim Lake | 1,774 | 158 | 2,300 | 227 | 22 | 7 | 196 |
| Mini-Anaheim Lk | 0 | 0 | 10 | 0 | 0 | 0 | 220 |
| Miller Basin | 44 | 57 | 350 | 2,399 | 102 | 77 | 212 |
| Kraemer Basin | 684 | 0 | 1,055 | 60 | 21 | 2 | 175 |
| La Palma Basin | 94 | 93 | 101 | 5,393 | 192 | 174 | 218 |
| Mira Loma | 36 | 32 | 53 | 1,399 | 59 | 45 | 218 |
| La Jolla Basin | 4 | 4 | 20 | 565 | 41 | 18 | 200 |
| Placentia Basin | 0 | 0 | 200 | na | na | na | na |
| Raymond Basin | 5 | 5 | 200 | 383 | na | na | na |
| Five Coves Basins | 257 | 0 | 329 | na | na | na | na |
| Burriss Pit | 2,228 | 1,734 | 2,500 | 958 | 52 | 31 | 167 |
| River View Basin | 0 | 0 | 8 | 0 | 0 | 0 | 186 |
| Fletcher Basin | 0 | 0 | 15 | 0 | 0 | 0 | 187 |
| Santiago (Bond) | 7,591 | 5,968 | 8,312 | 3,059 | 154 | 99 | 266 |
| Santiago (Blu Dia) | 4,296 | 2,991 | 5,259 | - | - | - | - |
| Totals | 21,250 | 15,233 | 25,247 | 15,267 | | | |
| | | | | | | | |
| Prado Dam | 1 | 1 | 20,000 | | | | |

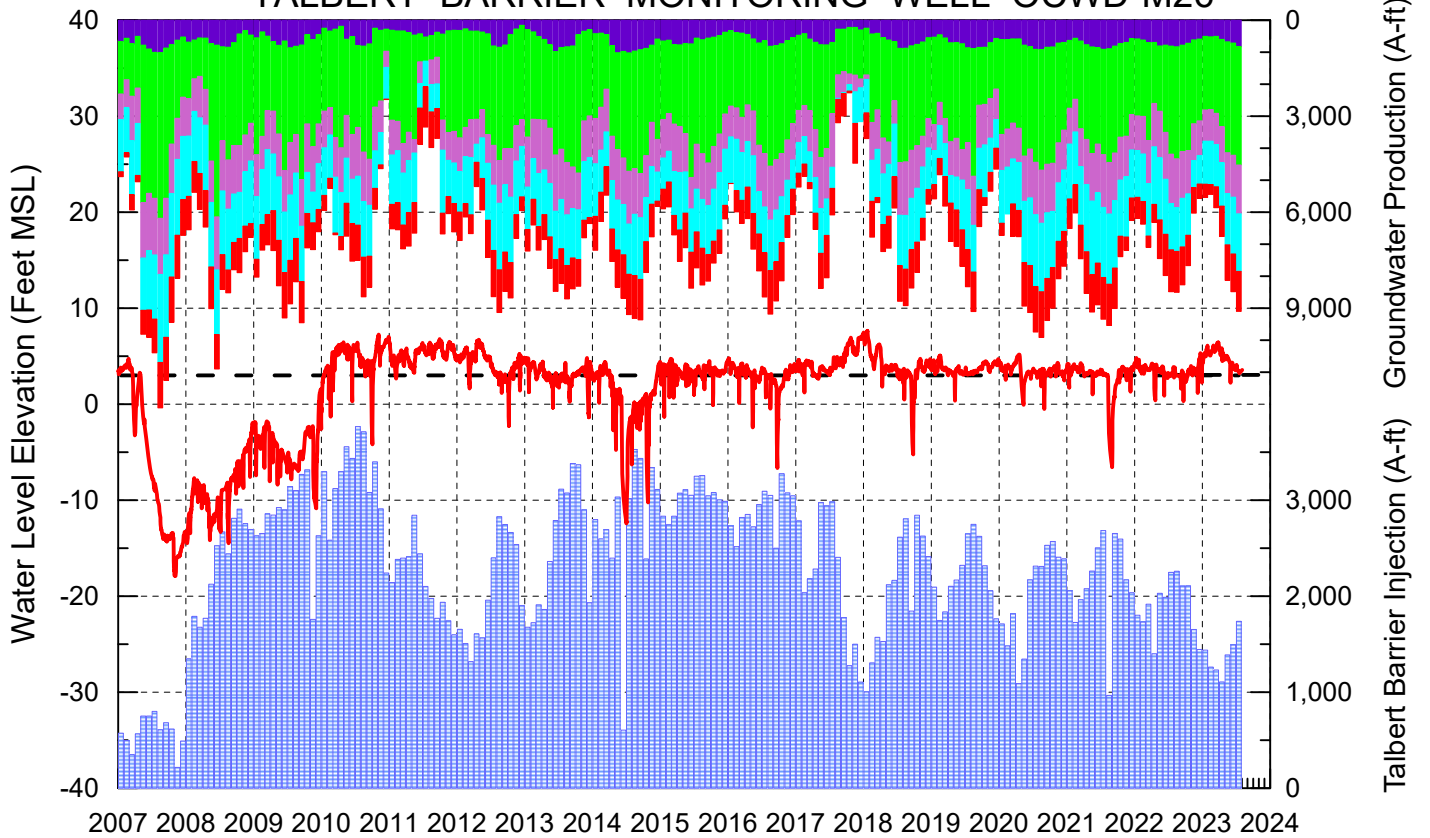
Cumulative Anaheim Field HQ Rainfall




Temperature at Santa Ana Fire Station



TALBERT BARRIER MONITORING WELL OCWD-M26



- | | | | |
|---|---|---|---|
|  | Talbert/Lambda Aquifer Mergence Zone Perforated Interval: 71 - 135 ft. bgs |  | Fountain Valley Groundwater Production |
|  | Talbert Barrier Injection |  | IRWD Groundwater Production |
|  | Protective Level to Prevent Seawater Intrusion |  | Mesa Water Groundwater Production |
| | |  | Huntington Beach Groundwater Production |
| | |  | Newport Beach Groundwater Production |

