

# WATER RESOURCES SUMMARY

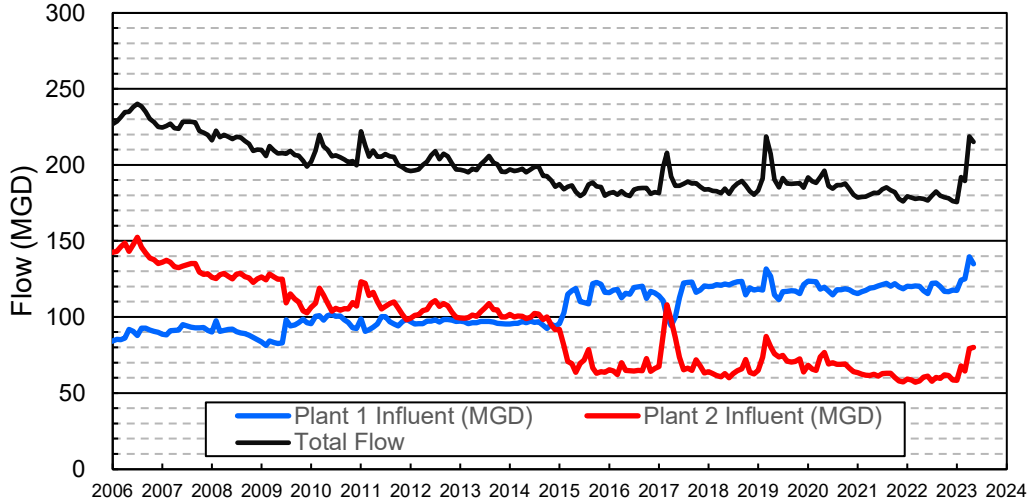
April 2023

INFLOWS & OUTFLOWS (acre-feet)	Total for Month	Year to Date - This Year    Last Year	
<b>BASIN SUPPLIES</b>			
Water Purchases from MWD (excludes In Lieu)	0	16,864	20,003
Water into MWD Storage Account (excludes In Lieu)	0	0	0
SAR & Santiago Creek Flows (accounts for storage to/from recharge facilities)	26,206	268,046	114,648
GWRS Water to Forebay	5,092	58,656	49,716
GWRS Water to Mid-Basin Injection Wells	582	6,226	6,396
GWRS Water to Talbert Barrier	1,106	16,865	19,962
OC-44 and F. Valley Water to Talbert Barrier	4	22	13
Alamitos Barrier Water	160	2,100	2,262
Incidental Recharge (estimated)	5,500	39,400	17,536
Evaporation from Recharge Basins	(402)	(2,503)	(2,096)
River Flow Lost to Ocean	<u>(3,586)</u>	<u>(141,263)</u>	<u>(16,390)</u>
Total Groundwater Recharge	34,663	264,412	212,049
<b>WATER PRODUCTION</b>			
Groundwater Production	19,794	197,259	211,319
MWD Storage Program Withdrawals	<u>0</u>	<u>0</u>	<u>0</u>
Total Groundwater Production	19,794	197,259	211,319
<b>BASIN BALANCE</b>			
Change in Groundwater Storage	14,868	67,153	730
Change in Groundwater Storage excluding MWD Stored Water	14,868	67,153	730
Accumulated Overdraft	-----	205,717	245,030
Accumulated Overdraft excluding MWD Storage	-----	205,717	245,030
<b>IN LIEU WATER</b>			
OCWD In Lieu Purchases (MWD Cyclic Storage)	0	0	0
MWD In Lieu Storage	<u>0</u>	<u>0</u>	<u>0</u>
Total In Lieu	0	0	0
<b>OTHER KEY INFORMATION</b>			
1. MWD Water Deliveries to Producers	5,425	77,447	97,887
2. Basin Production Percentage	78.5%	71.8%	68.3%
3. Total Water Demand	26,799	290,954	327,382
4. Total GWRS Production	6,784	81,802	76,123
5. Green Acres Project Water	236	2,753	2,969
6. SAR Water Quality			
- Total Dissolved Solids (TDS) of SAR below Prado Dam (ppm)	422	-----	688
- Total Nitrogen of SAR below Prado Dam (ppm)	1.9	-----	3.9
7. Month-End Water Storage Behind Prado Dam	14,082	-----	2
8. Month-End Water Storage in Recharge Facilities	23,982	-----	12,814
9. Water Storage Change in Recharge Facilities	(322)	13,106	4,154
10. Total Artificial Recharge	29,163	225,012	194,513
11. Monthly Mean Temperature at Santa Ana Fire Station (°F)	62.7	-----	66.4
12. Rainfall at FHQ (inches)	0.08	24.78	6.91

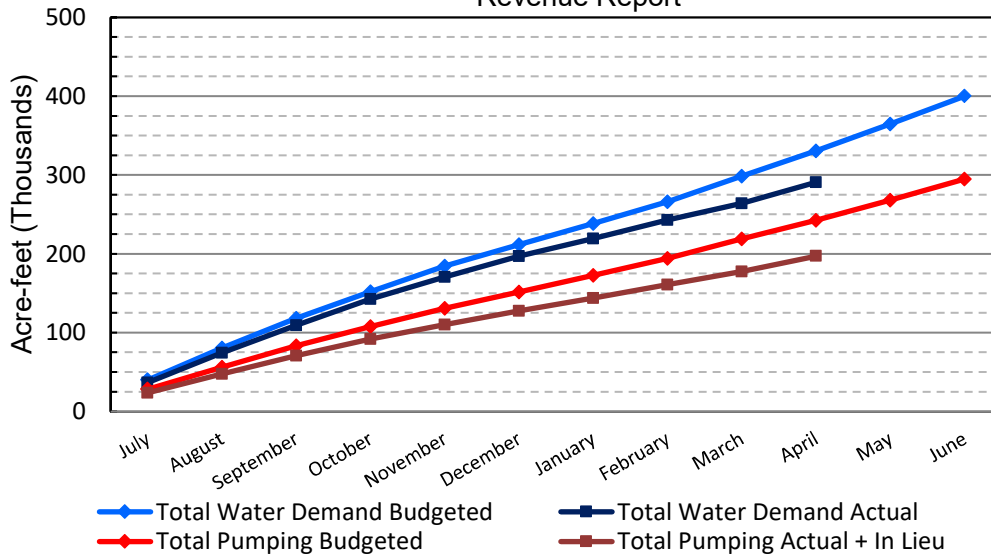
\*\*\* Note: Data are preliminary, subject to change

5/11/2023

### Orange County Sanitation District Influent Flows Report

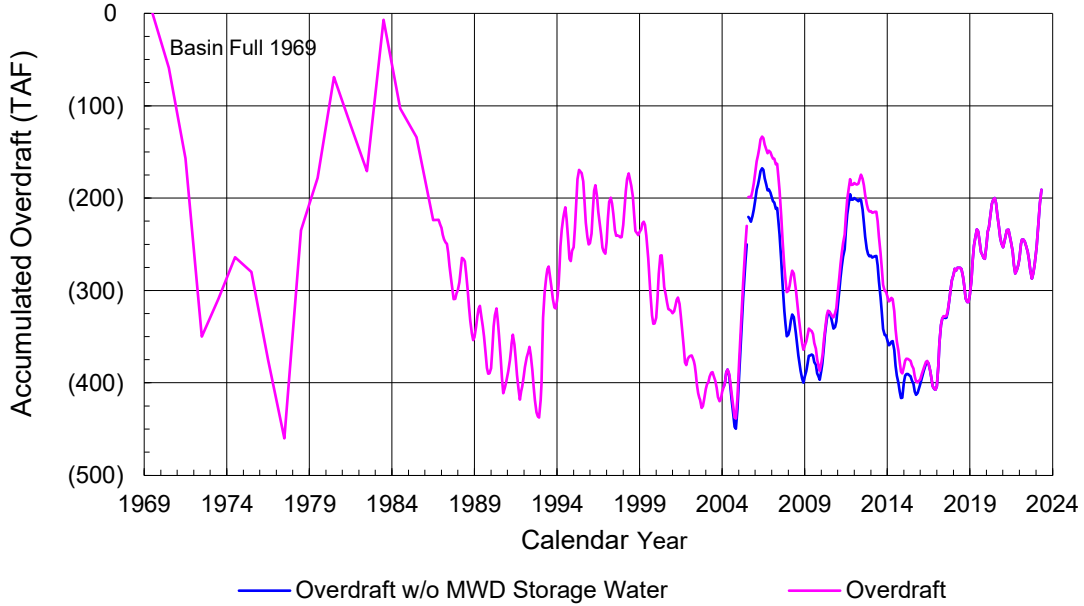


### 2022-23 Water Demands/Groundwater Pumping + In Lieu/RA Revenue Report

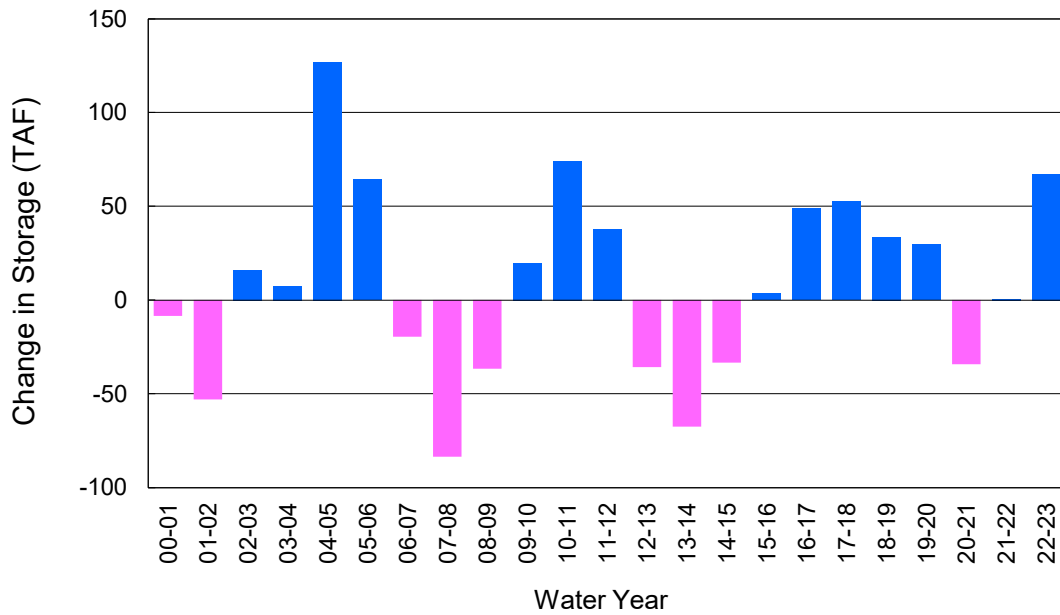


	Monthly		Accumulated Total for the Year			
	Budget	Actual	Budget	Actual	Difference	Percent
Total Water Demand	31,700	26,799	330,400	290,954	-39,446	88.06%
Total Pumping + In Lieu	23,500	19,794	242,600	197,259	-45,341	81.31%
RA Revenue	\$10,857,000	\$9,144,942	\$112,081,200	\$91,133,548	-\$20,947,652	81.31%

### Accumulated Overdraft



### YTD Change in Groundwater Storage in OCWD



## PRODUCERS WATER USAGE SUMMARY

**April 2023**

(AF except BPP)

WATER AGENCY	Ground-water (1)	In Lieu	Reclaimed Water	Total Import (2)	Total Demand	2022-23	2021-22	YTD	APR	2022-23	2021-22
						YTD Demand	YTD Demand	% Diff Demand	2023 BPP	YTD BPP	YTD BPP
Anaheim	1,226	0	0	2,567	3,794	42,949	49,108	87%	32.3%	27.1%	28.9%
Buena Park	939	0	0	6	945	9,779	10,820	90%	99.3%	87.7%	87.2%
East Orange County	0	0	0	60	60	614	749	82%	0.5%	0.3%	0.3%
Fountain Valley	598	0	36	0	635	7,177	8,329	86%	100.0%	100.0%	100.0%
Fullerton	1,042	0	0	483	1,525	17,011	19,467	87%	68.4%	76.0%	75.5%
Garden Grove	1,336	0	0	8	1,344	16,149	18,135	89%	99.4%	77.5%	80.4%
Golden State	797	0	0	687	1,485	16,508	19,081	87%	53.7%	56.5%	63.1%
West OC System	747	-	-	179	927	10,155	11,576	88%	na	na	na
East OC System	50	-	-	508	558	6,354	7,504	85%	na	na	na
Huntington Beach	1,357	0	0	366	1,723	19,282	21,614	89%	78.8%	66.0%	83.3%
Irvine Ranch	3,528	0	1,456	3	4,986	50,164	54,333	92%	99.9%	99.7%	98.8%
DRWF Clear	2,021	-	-	-	2,021	21,372	23,143	92%	na	na	na
DRWF Color	706	-	-	-	706	7,052	5,033	140%	na	na	na
Laguna Beach	0	0	0	194	194	2,463	2,740	na	0.0%	18.3%	0.0%
La Palma	120	0	0	0	120	1,330	1,387	96%	100.0%	99.7%	95.6%
Mesa Water (MW)	1,126	0	50	0	1,176	12,783	14,342	89%	100.0%	99.9%	98.4%
MW Clear	1,109	-	-	-	1,109	9,920	10,670	93%	na	na	na
MW Amber	17	-	-	-	17	2,266	2,736	83%	na	na	na
Newport Beach	948	0	27	101	1,075	10,867	11,930	91%	90.4%	78.9%	68.5%
Orange	1,682	0	0	41	1,723	18,915	21,956	86%	97.6%	80.0%	53.7%
OCWD (GAP)	123	0	0	0	123	1,183	1,262	94%	100.0%	100.0%	100.0%
Santa Ana	2,001	0	11	357	2,369	25,403	27,373	93%	84.9%	71.1%	77.6%
Seal Beach	190	0	0	1	191	2,293	2,772	83%	99.7%	74.2%	78.9%
Serrano	78	0	0	103	181	2,108	2,327	91%	42.9%	62.0%	20.7%
Tustin	345	0	0	364	709	7,883	8,963	88%	48.7%	51.9%	56.3%
Westminster	757	0	0	0	757	8,058	8,937	90%	100.0%	97.3%	100.0%
Yorba Linda	<u>1,159</u>	<u>0</u>	<u>0</u>	<u>77</u>	<u>1,237</u>	<u>13,535</u>	<u>16,276</u>	<u>83%</u>	<u>93.7%</u>	<u>85.6%</u>	<u>25.8%</u>
SUBTOTAL:	19,353	0	1,580	5,418	26,351	286,455	321,900	89%	78.5%	71.8%	68.3%
Other Producers (Est ~3% of Subtotal)	<u>441</u>	<u>0</u>	<u>0</u>	<u>7</u>	<u>448</u>	<u>4,499</u>	<u>5,482</u>	<u>82%</u>			
<b>TOTAL:</b>	<b>19,794</b>	<b>0</b>	<b>1,580</b>	<b>5,425</b>	<b>26,799</b>	<b>290,954</b>	<b>327,382</b>		<b>78.5%</b>	<b>71.8%</b>	<b>68.3%</b>
OCWD (Talbert Barrier)	0		1,106	0	1,106	16,887	19,975				
OCSD (GAP)	na		112	na	112	900	495				

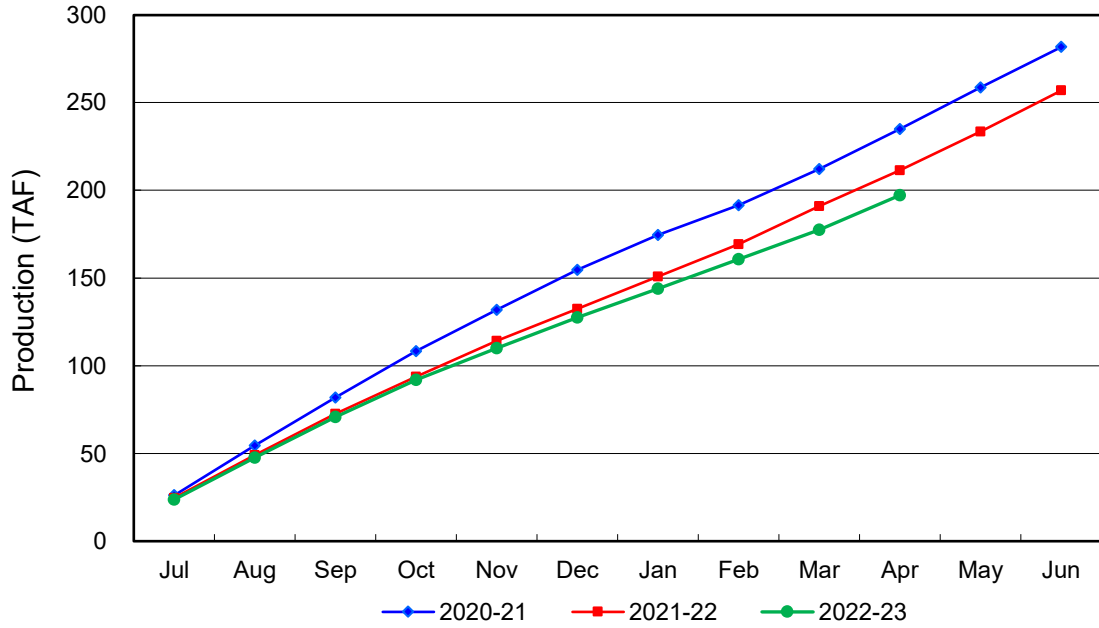
Estimated

(1) Excludes MWD CUP Withdrawals

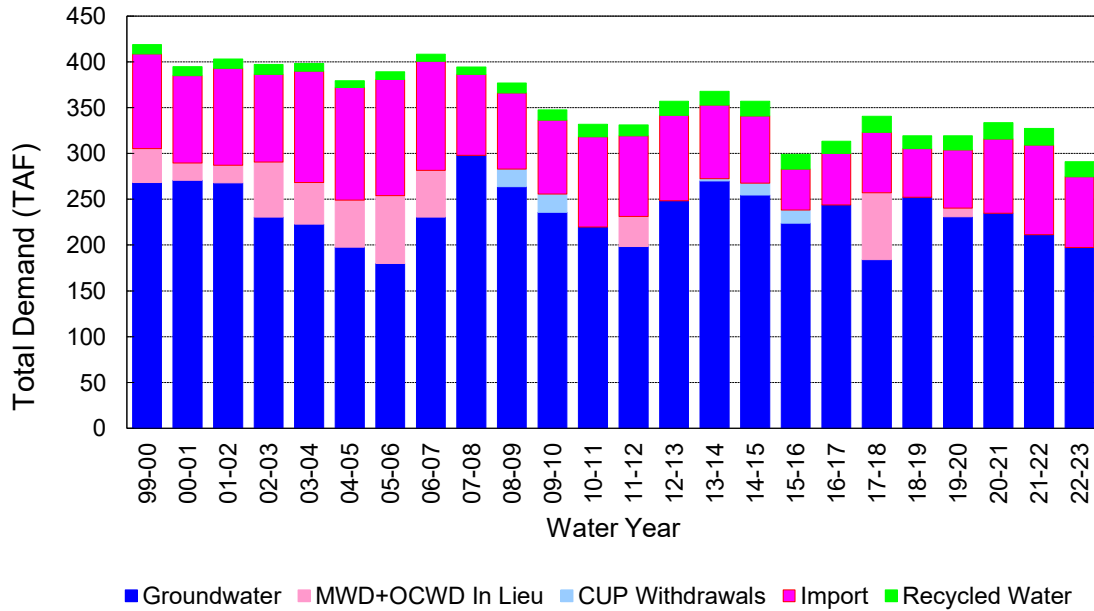
(2) Includes MWD CUP Withdrawals & In Lieu Water

5/11/2023 15:40

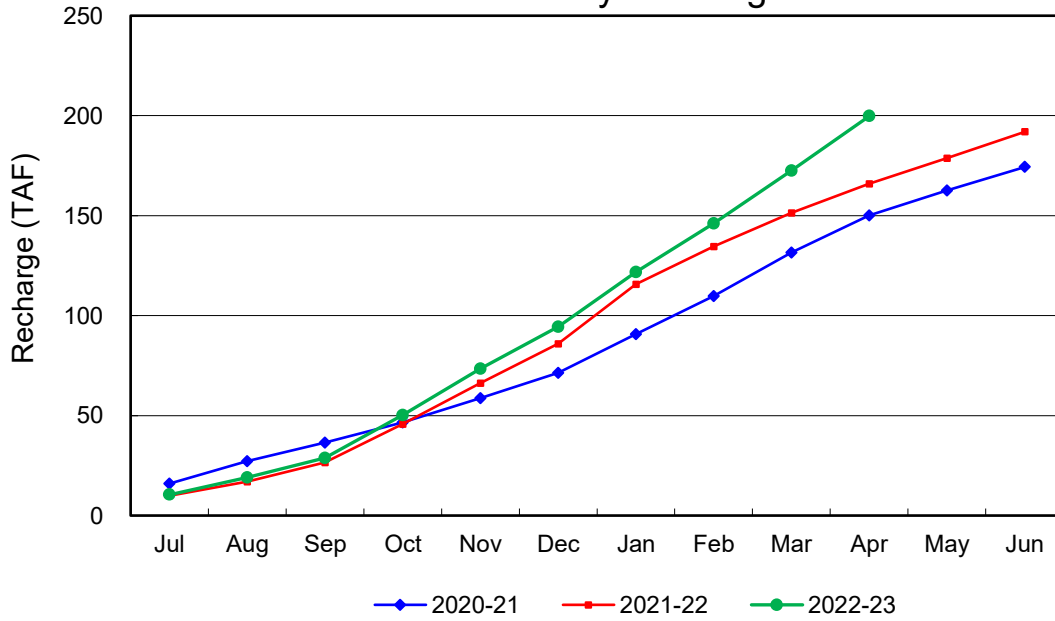
### Annual Groundwater Production



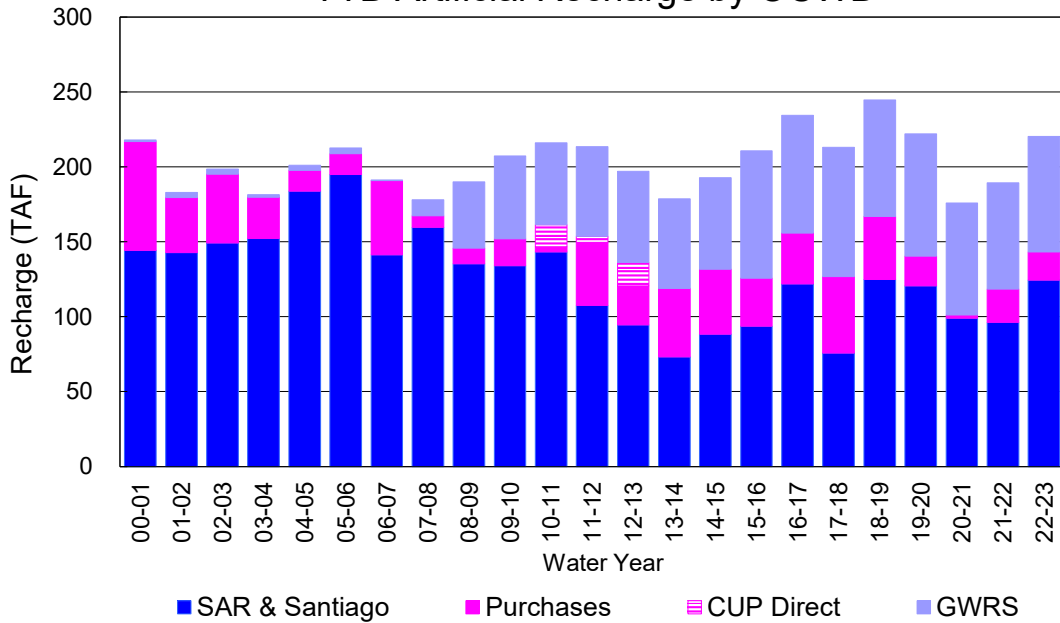
### YTD Total Demand in OCWD



### Annual Forebay Recharge



### YTD Artificial Recharge by OCWD



## RECHARGE AREAS REPORT

April 2023

	Percolation (AF)	Remarks
RIVER SYSTEM	5,212	88 cfs per day average perc
DESILTING SYSTEM	na	SAR
OFF-RIVER SYSTEM	670	SAR
WARNER SYSTEM	728	SAR
OLIVE BASIN	na	Passive System
ANAHEIM LAKE	1,861	SAR
MINI-ANA LAKE	412	SAR
MILLER BASIN	1,612	SAR
KRAEMER BASIN	1,661	SAR
LA PALMA BASIN	2,870	GWRS
MIRA LOMA	2,161	GWRS
LA JOLLA BASIN	732	SAR
PLACENTIA BASIN	na	N/A
RAYMOND BASIN	130	SAR
FIVE COVES BASIN	na	SAR
BURRIS BASIN	1,867	SAR
RIVER VIEW BASIN	200	SAR, Burris pumping
FLETCHER BASIN	101	SAR, Burris pumping
SANTIAGO BASINS	6,747	SAR, Burris pumping
SANTIAGO CREEK	348	SAR, Burris pumping
<b>TOTALS</b>	<b>27,312</b>	
<b>5-YR AVERAGE</b>	<b>22,142</b>	

FLOWS TO RECHARGE AREAS (AF)	
Imperial Headgates (estimated)	23,729
GWRS	5,094
OC-28 (MWD)	0
OC-28a (MWD)	0
OC-59	0
Est'd local Forebay inflow below Imperial	0
Est'd local Santiago inflow (estimated)	498
Irvine lake releases (OC-13 MWD)	1,651
Villa Park Dam releases (estimated)	0
Precip at Warner Basin (inches)	0.08
Precip direct to open water surfaces	6
<b>TOTAL INFLOW</b>	<b>30,978</b>

LOSSES FROM RECHARGE AREAS (AF)	
Est'd SAR flow past Chapman Ave.	3,150
Est'd Santiago Cr. flow to SAR	436
Est'd flows past Raymond Basin	0
Calc'd evap (inches) Estimated	5
Est'd evaporative losses	402
<b>TOTAL LOSSES</b>	<b>3,988</b>

STORAGE CHANGES (AF)			
Facility	Begin	End	Net
Deep basins	10,583	10,432	-151
Santiago Pits	13,721	13,550	-171
River			
Off-river			
Irvine Lake			
<b>TOTAL</b>	<b>24,304</b>	<b>23,982</b>	<b>-322</b>

SUMMARY (AF)	
TOTAL INFLOW	30,978
TOTAL LOSSES	3,988
STORAGE CHANGE	-322
<b>CALC'D PERCOLATION</b>	<b>27,312</b>

## DEEP BASINS MONTHLY STATUS

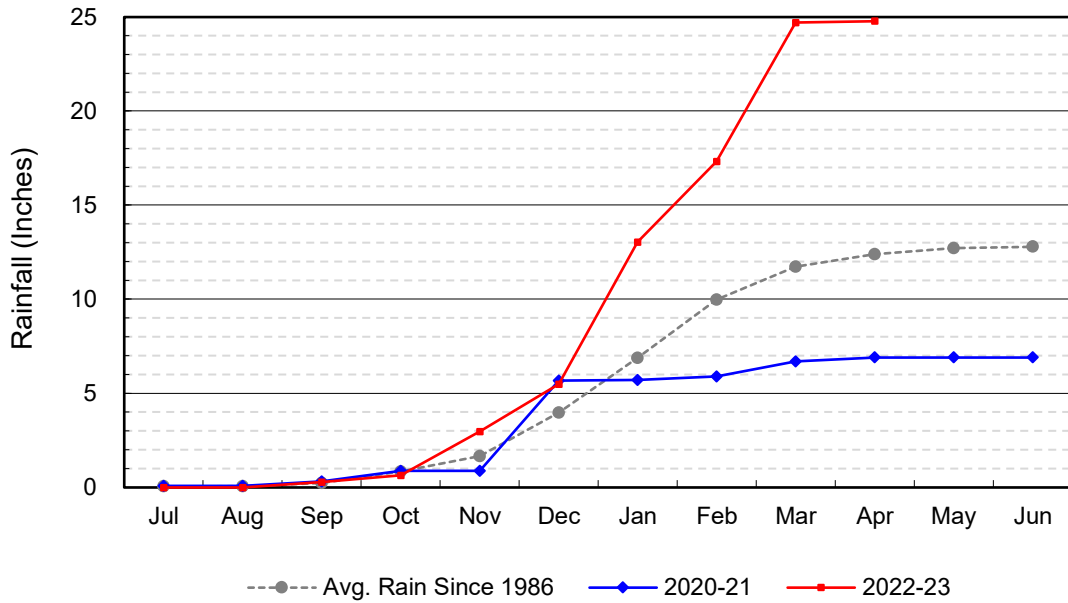
**April 2023**

(values in acre-feet)

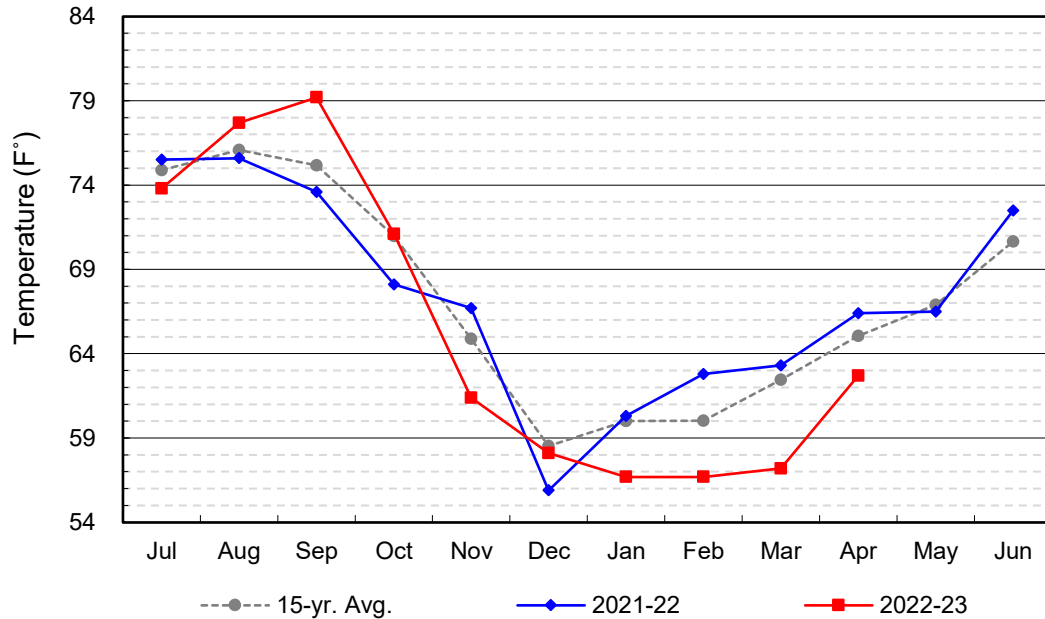
<i>Facility</i>	<i>Storage Start</i>	<i>Storage End</i>	<i>Maximum Storage</i>	<i>Total Perc</i>	<i>Max Perc</i>	<i>Avg Perc</i>	<i>Avg W.S. Elev</i>
Desilting Ponds	230	230	252	na	na	na	na
Fos-Huckleberry	569	568	628	na	na	na	na
Conrock Basin	595	593	661	na	na	na	na
Warner Basins	2,884	2,905	2,900	728	na	na	238
Olive Pit	83	91	95	363	na	na	222
Anaheim Lake	2,040	1,996	2,300	1,861	77	62	218
Mini-Anaheim Lk	2	0	10	412	41	14	221
Miller Basin	242	311	350	1,612	71	54	214
Kraemer Basin	1,069	1,054	1,055	1,661	66	55	217
La Palma Basin	91	54	101	2,870	190	96	213
Mira Loma	31	35	53	2,161	90	72	217
La Jolla Basin	5	1	20	732	34	24	201
Placentia Basin	0	0	200	na	na	na	na
Raymond Basin	0	5	200	130	na	na	na
Five Coves Basins	300	315	329	na	na	na	na
Burriss Pit	2,429	2,253	2,500	1,867	na	na	169
River View Basin	0	7	8	200	14	7	187
Fletcher Basin	13	14	15	101	6	3	189
Santiago (Bond)	8,377	8,298	8,312	6,747	246	225	285
Santiago (Blu Dia)	5,344	5,252	5,259	-	-	-	-
<b>Totals</b>	<b>24,304</b>	<b>23,982</b>	<b>25,247</b>	<b>21,445</b>			
Prado Dam	19,435	14,082	20,000				



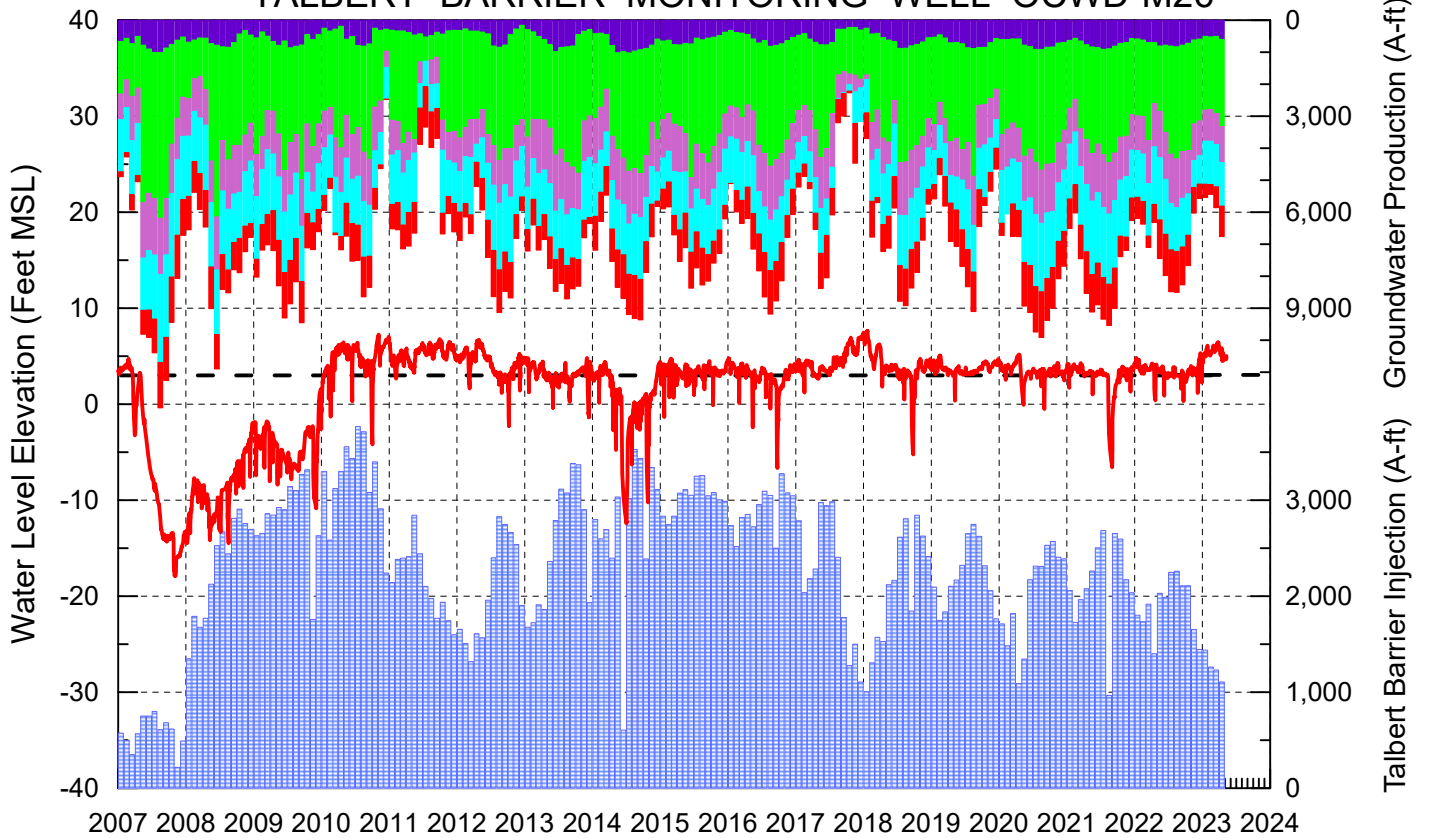
### Cumulative Anaheim Field HQ Rainfall



### Temperature at Santa Ana Fire Station



# TALBERT BARRIER MONITORING WELL OCWD-M26



- Talbert/Lambda Aquifer Mergence Zone Perforated Interval: 71 - 135 ft. bgs
- ▨ Talbert Barrier Injection
- - - Protective Level to Prevent Seawater Intrusion
- ▨ Fountain Valley Groundwater Production
- ▨ IRWD Groundwater Production
- ▨ Mesa Water Groundwater Production
- ▨ Huntington Beach Groundwater Production
- ▨ Newport Beach Groundwater Production

