

WATER RESOURCES SUMMARY

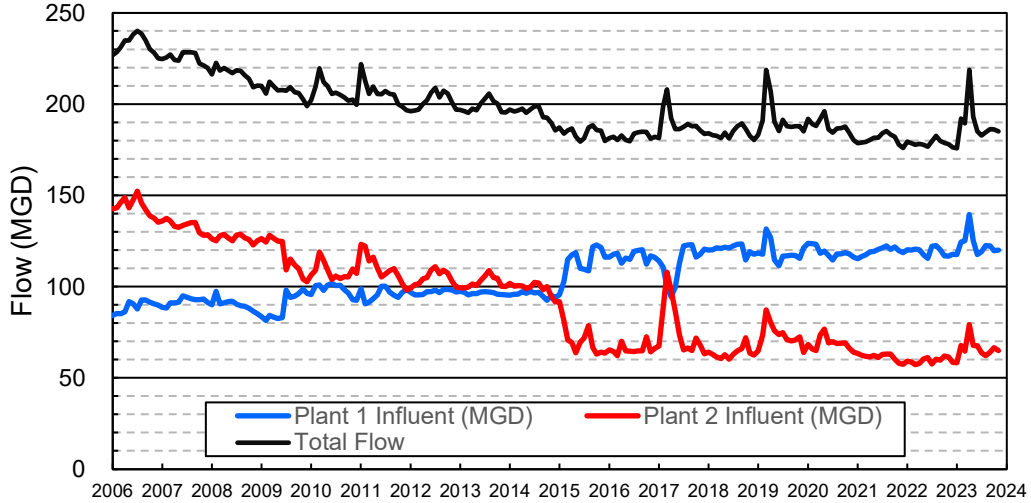
October 2023

| INFLOWS & OUTFLOWS (acre-feet) | Total for Month | Year to Date - This Year Last Year | |
|--|--------------------|--|----------|
| BASIN SUPPLIES | | | |
| Water Purchases from MWD (excludes In Lieu) | 0 | 0 | 11,232 |
| Water into MWD Storage Account (excludes In Lieu) | 0 | 0 | 0 |
| SAR & Santiago Creek Flows (accounts for storage to/from recharge facilities) | 9,638 | 52,698 | 18,701 |
| GWRS Water to Forebay | 7,948 | 29,004 | 21,175 |
| GWRS Water to Mid-Basin Injection Wells | 664 | 2,514 | 2,685 |
| GWRS Water to Talbert Barrier | 1,824 | 6,993 | 8,726 |
| OC-44 and F. Valley Water to Talbert Barrier | 1 | 4 | 6 |
| Alamitos Barrier Water | 130 | 660 | 979 |
| Incidental Recharge (estimated) | 1,000 | 4,500 | 6,100 |
| Evaporation from Recharge Basins | (263) | (1,598) | (884) |
| River Flow Lost to Ocean | <u>0</u> | <u>(359)</u> | <u>0</u> |
| Total Groundwater Recharge | 20,943 | 94,417 | 68,719 |
| WATER PRODUCTION | | | |
| Groundwater Production | 24,454 | 103,968 | 92,133 |
| MWD Storage Program Withdrawals | <u>0</u> | <u>0</u> | <u>0</u> |
| Total Groundwater Production | 24,454 | 103,968 | 92,133 |
| BASIN BALANCE | | | |
| Change in Groundwater Storage | (3,511) | (9,551) | (23,413) |
| Change in Groundwater Storage excluding MWD Stored Water | (3,511) | (9,551) | (23,413) |
| Accumulated Overdraft | ----- | 198,554 | 281,416 |
| Accumulated Overdraft excluding MWD Storage | ----- | 198,554 | 281,416 |
| IN LIEU WATER | | | |
| OCWD In Lieu Purchases (MWD Cyclic Storage) | 0 | 0 | 0 |
| MWD In Lieu Storage | <u>0</u> | <u>0</u> | <u>0</u> |
| Total In Lieu | 0 | 0 | 0 |
| OTHER KEY INFORMATION | | | |
| 1. MWD Water Deliveries to Producers | 5,914 | 26,089 | 43,392 |
| 2. Basin Production Percentage | 80.5% | 79.9% | 68.0% |
| 3. Total Water Demand | 32,209 | 137,614 | 142,905 |
| 4. Total GWRS Production | 10,441 | 38,538 | 32,623 |
| 5. Green Acres Project Water | 353 | 1,562 | 1,673 |
| 6. SAR Water Quality | | | |
| - Total Dissolved Solids (TDS) of SAR below Prado Dam (ppm) | 734 | ----- | 710 |
| - Total Nitrogen of SAR below Prado Dam (ppm) | 6.3 | ----- | 4.2 |
| 7. Month-End Water Storage Behind Prado Dam | 3 | ----- | 1 |
| 8. Month-End Water Storage in Recharge Facilities | 14,784 | ----- | 8,830 |
| 9. Water Storage Change in Recharge Facilities | (1,347) | (6,466) | (2,046) |
| 10. Total Artificial Recharge | 19,943 | 89,917 | 62,619 |
| 11. Monthly Mean Temperature at Santa Ana Fire Station (°F) | 71.1 | ----- | 71.1 |
| 12. Rainfall at FHQ (inches) | 0.02 | 2.78 | 0.64 |

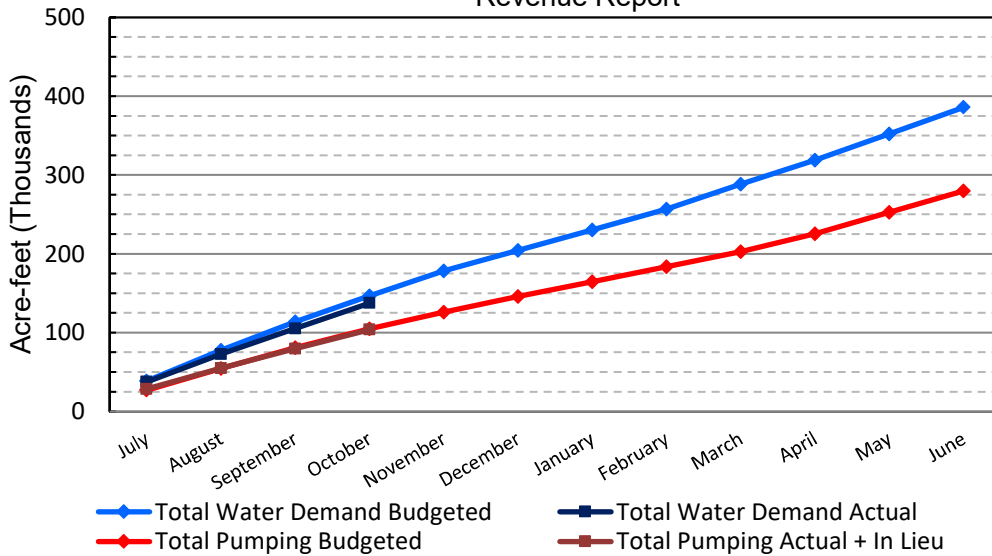
*** Note: Data are preliminary, subject to change

11/9/2023

Orange County Sanitation District Influent Flows Report

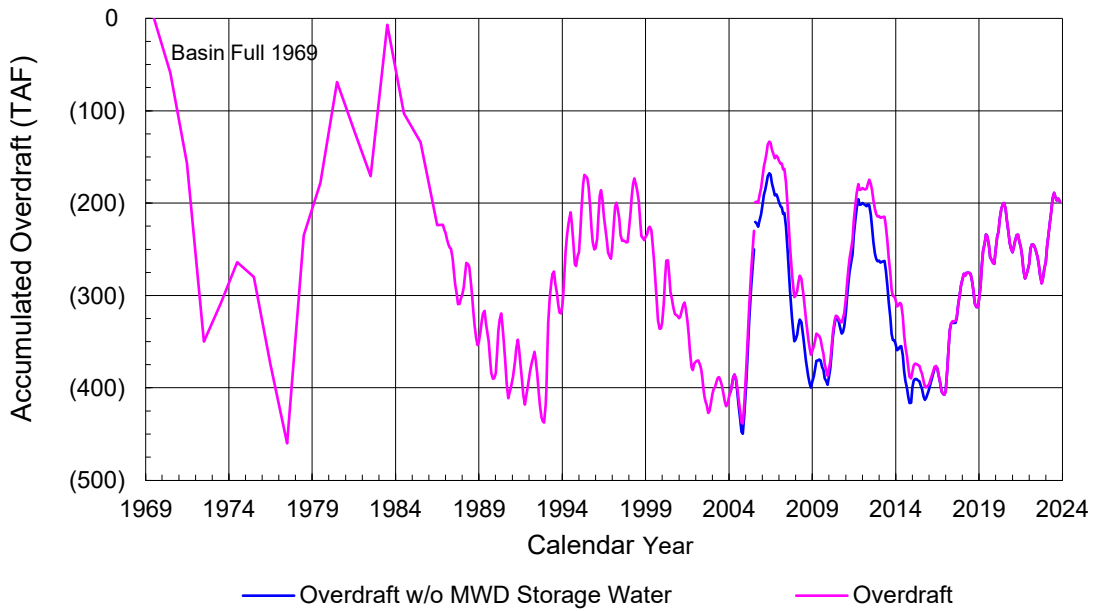


2023-24 Water Demands/Groundwater Pumping + In Lieu/RA Revenue Report

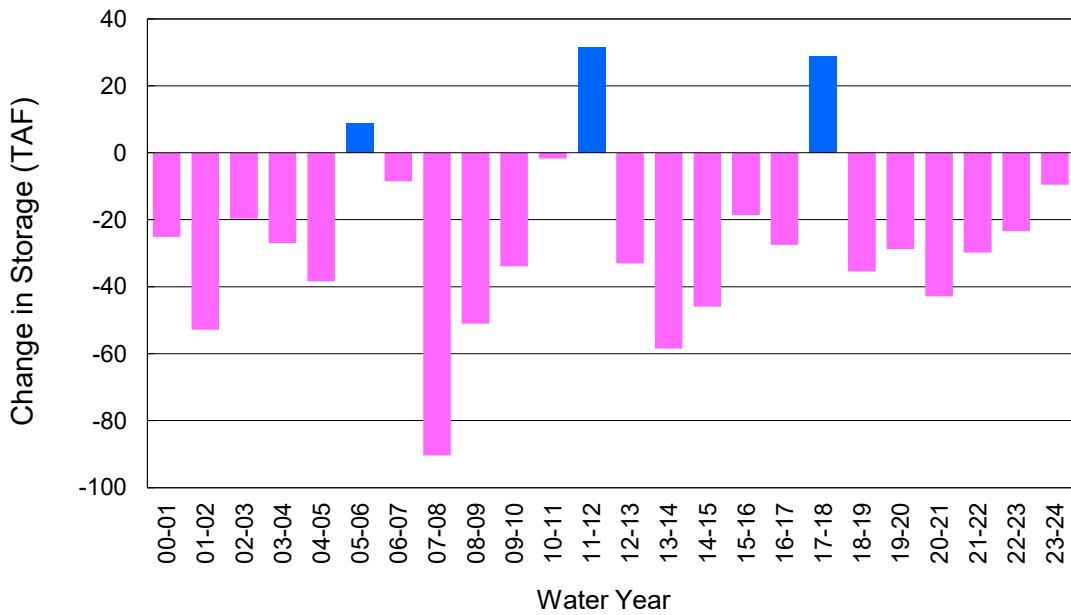


| | Monthly | | Accumulated Total for the Year | | | |
|-------------------------|--------------|--------------|--------------------------------|--------------|------------|---------|
| | Budget | Actual | Budget | Actual | Difference | Percent |
| Total Water Demand | 33,000 | 32,209 | 146,600 | 137,614 | -8,986 | 93.87% |
| Total Pumping + In Lieu | 24,100 | 24,454 | 105,000 | 103,968 | -1,032 | 99.02% |
| RA Revenue | \$11,134,200 | \$11,297,635 | \$48,510,000 | \$48,033,273 | -\$476,727 | 99.02% |

Accumulated Overdraft



YTD Change in Groundwater Storage in OCWD



PRODUCERS WATER USAGE SUMMARY

October 2023

(AF except BPP)

| WATER AGENCY | Ground-water (1) | In Lieu | Reclaimed Water | Total Import (2) | Total Demand | 2023-24 YTD Demand | 2022-23 YTD Demand | YTD % Diff Demand | OCT 2023 BPP | 2023-24 YTD BPP | 2022-23 YTD BPP |
|--|------------------|----------|-----------------|------------------|---------------|--------------------|--------------------|-------------------|--------------|-----------------|-----------------|
| Anaheim | 1,800 | 0 | 0 | 2,800 | 4,600 | 19,795 | 21,225 | 93% | 39.1% | 45.1% | 26.8% |
| Buena Park | 1,029 | 0 | 0 | 28 | 1,057 | 4,716 | 4,923 | 96% | 97.4% | 86.4% | 82.5% |
| East Orange County | 0 | 0 | 0 | 77 | 77 | 322 | 321 | 100% | 0.4% | 0.4% | 0.2% |
| Fountain Valley | 762 | 0 | 76 | 0 | 838 | 3,524 | 3,685 | 96% | 100.0% | 100.0% | 100.0% |
| Fullerton | 1,541 | 0 | 0 | 387 | 1,929 | 9,166 | 8,826 | 104% | 79.9% | 75.8% | 76.4% |
| Garden Grove | 1,909 | 0 | 0 | 0 | 1,909 | 7,783 | 7,889 | 99% | 100.0% | 100.0% | 59.0% |
| Golden State | 1,201 | 0 | 0 | 691 | 1,892 | 8,031 | 8,234 | 98% | 63.5% | 59.0% | 59.7% |
| West OC System | 883 | - | - | 282 | 1,165 | 4,891 | 4,934 | 99% | na | na | na |
| East OC System | 318 | - | - | 409 | 727 | 3,141 | 3,300 | 95% | na | na | na |
| Huntington Beach | 1,680 | 0 | 0 | 466 | 2,146 | 9,031 | 9,357 | 97% | 78.3% | 82.0% | 60.1% |
| Irvine Ranch | 3,929 | 0 | 1,631 | 4 | 5,564 | 22,858 | 22,847 | 100% | 99.9% | 99.7% | 99.5% |
| DRWF Clear | 2,666 | - | - | - | 2,666 | 10,885 | 10,731 | 101% | na | na | na |
| DRWF Color | 717 | - | - | - | 717 | 2,857 | 2,822 | 101% | na | na | na |
| Laguna Beach | 0 | 0 | 0 | 270 | 270 | 1,151 | 1,224 | na | 0.0% | 0.0% | 0.0% |
| La Palma | 150 | 0 | 0 | 0 | 150 | 634 | 642 | 99% | 100.0% | 100.0% | 99.5% |
| Mesa Water (MW) | 1,360 | 0 | 75 | 0 | 1,436 | 6,080 | 6,299 | 97% | 100.0% | 100.0% | 99.8% |
| MW Clear | 1,274 | - | - | - | 1,274 | 4,967 | 3,802 | 131% | na | na | na |
| MW Amber | 86 | - | - | - | 86 | 755 | 2,078 | 36% | na | na | na |
| Newport Beach | 1,097 | 0 | 43 | 46 | 1,185 | 5,080 | 5,512 | 92% | 96.0% | 92.7% | 90.2% |
| Orange | 1,925 | 0 | 0 | 176 | 2,100 | 9,217 | 9,609 | 96% | 91.6% | 83.2% | 63.4% |
| OCWD (GAP) | 142 | 0 | 0 | 0 | 142 | 705 | 527 | 134% | 100.0% | 100.0% | 100.0% |
| Santa Ana | 2,500 | 0 | 16 | 240 | 2,756 | 11,520 | 11,886 | 97% | 91.2% | 91.3% | 61.8% |
| Seal Beach | 259 | 0 | 0 | 0 | 259 | 1,108 | 1,110 | 100% | 99.8% | 99.7% | 46.8% |
| Serrano | 23 | 0 | 0 | 189 | 213 | 1,031 | 1,061 | 97% | 11.0% | 56.9% | 87.6% |
| Tustin | 600 | 0 | 0 | 259 | 859 | 3,753 | 3,995 | 94% | 69.9% | 64.3% | 45.6% |
| Westminster | 875 | 0 | 0 | 0 | 875 | 3,646 | 3,766 | 97% | 100.0% | 100.0% | 97.2% |
| Yorba Linda | <u>1,384</u> | <u>0</u> | <u>0</u> | <u>274</u> | <u>1,658</u> | <u>7,206</u> | <u>7,573</u> | <u>95%</u> | <u>83.5%</u> | <u>83.3%</u> | <u>81.2%</u> |
| SUBTOTAL: | 24,166 | 0 | 1,841 | 5,907 | 31,914 | 136,358 | 140,511 | 97% | 80.5% | 79.9% | 68.0% |
| Other Producers (Est ~3% of Subtotal) | <u>287</u> | <u>0</u> | <u>0</u> | <u>8</u> | <u>295</u> | <u>1,255</u> | <u>2,394</u> | <u>52%</u> | | | |
| TOTAL: | 24,454 | 0 | 1,841 | 5,914 | 32,209 | 137,614 | 142,905 | | 80.5% | 79.9% | 68.0% |
| OCWD (Talbert Barrier) | 0 | | 1,824 | 0 | 1,824 | 6,997 | 8,731 | | | | |
| OCSA (GAP) | na | | 142 | na | 142 | 531 | 297 | | | | |

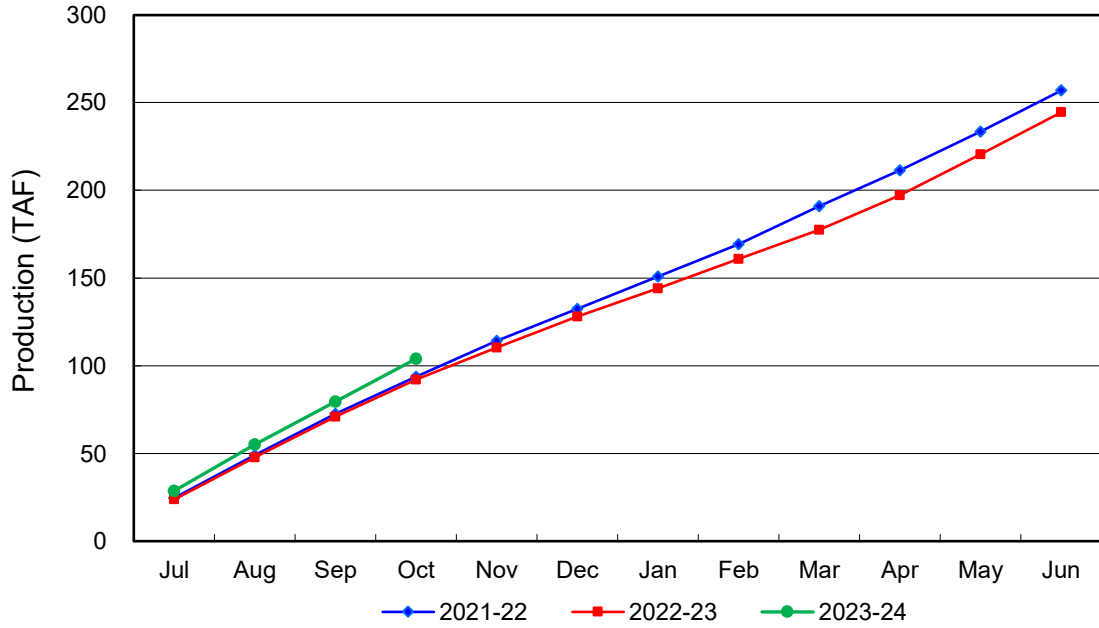
Estimated

(1) Excludes MWD CUP Withdrawals

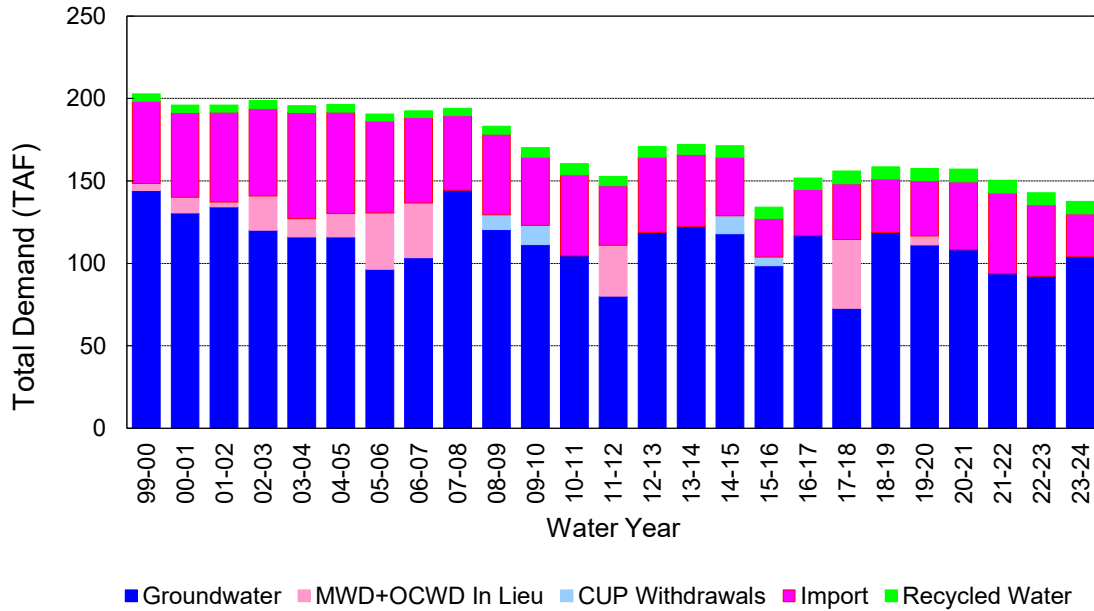
(2) Includes MWD CUP Withdrawals & In Lieu Water

11/9/2023 11:46

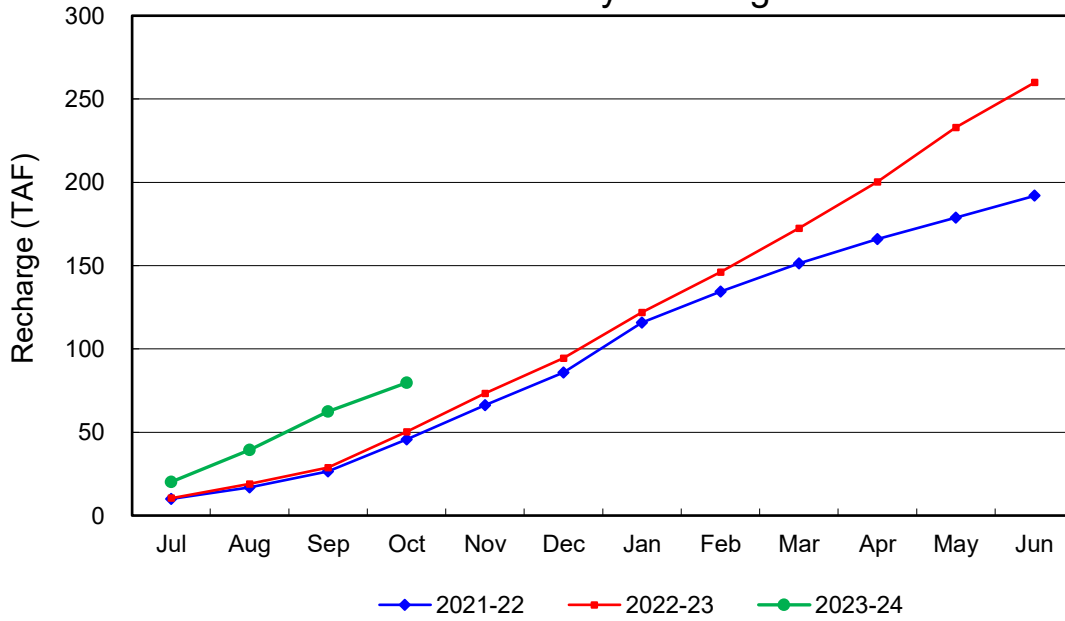
Annual Groundwater Production



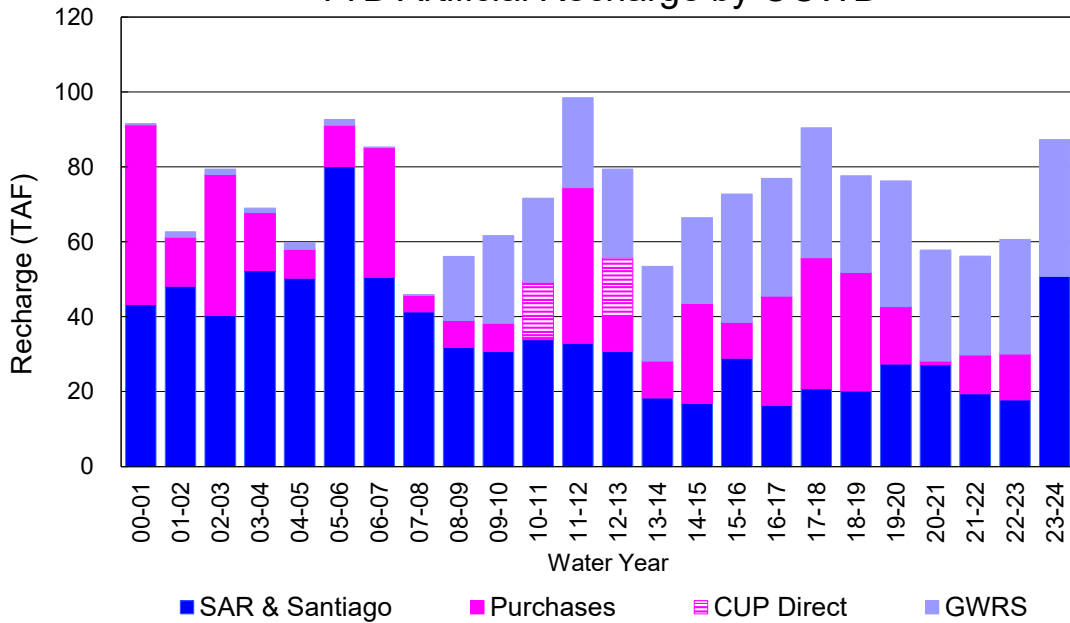
YTD Total Demand in OCWD



Annual Forebay Recharge



YTD Artificial Recharge by OCWD



RECHARGE AREAS REPORT

October 2023

| | Percolation (AF) | Remarks |
|---------------------|------------------|-----------------------------|
| RIVER SYSTEM | 3,939 | 64 cfs per day average perc |
| DESILTING SYSTEM | na | SAR |
| OFF-RIVER SYSTEM | 616 | SAR |
| WARNER SYSTEM | 891 | SAR |
| OLIVE BASIN | na | Passive System |
| ANAHEIM LAKE | 0 | |
| MINI-ANA LAKE | 0 | |
| MILLER BASIN | 2,673 | GWRS |
| KRAEMER BASIN | 716 | GWRS, SAR |
| LA PALMA BASIN | 2,940 | GWRS |
| MIRA LOMA | 1,454 | GWRS |
| LA JOLLA BASIN | 278 | SAR |
| PLACENTIA BASIN | na | |
| RAYMOND BASIN | 233 | SAR |
| FIVE COVES BASIN | na | SAR |
| BURRIS BASIN | 343 | SAR |
| RIVER VIEW BASIN | 108 | SAR, Burris Pumping |
| FLETCHER BASIN | 47 | SAR, Burris Pumping |
| SANTIAGO BASINS | 2,778 | SAR, Burris Pumping |
| SANTIAGO CREEK | 310 | SAR, Burris Pumping |
| TOTALS | 17,326 | |
| 5-YR AVERAGE | 17,131 | |

| FLOWS TO RECHARGE AREAS (AF) | |
|---|---------------|
| Imperial Headgates (estimated) | 6,463 |
| GWRS | 7,951 |
| OC-28 (MWD) | 0 |
| OC-28a (MWD) | 0 |
| OC-59 | 0 |
| Est'd local Forebay inflow below Imperial | 0 |
| Est'd local Santiago inflow (estimated) | 123 |
| Irvine lake releases (OC-13 MWD) | 1,704 |
| Villa Park Dam releases (estimated) | 0 |
| Precip at Warner Basin (inches) | 0.02 |
| Precip direct to open water surfaces | 1 |
| TOTAL INFLOW | 16,242 |

| LOSSES FROM RECHARGE AREAS (AF) | |
|----------------------------------|------------|
| Est'd SAR flow past Chapman Ave. | 0 |
| Est'd Santiago Cr. flow to SAR | 0 |
| Est'd flows past Raymond Basin | 0 |
| Calc'd evap (inches) Estimated | 4.65 |
| Est'd evaporative losses | 263 |
| TOTAL LOSSES | 263 |

| STORAGE CHANGES (AF) | | | |
|----------------------|---------------|---------------|---------------|
| Facility | Begin | End | Net |
| Deep basins | 6,337 | 5,080 | -1,257 |
| Santiago Pits | 9,794 | 9,704 | -90 |
| River | | | |
| Off-river | | | |
| Irvine Lake | | | |
| TOTAL | 16,131 | 14,784 | -1,347 |

| SUMMARY (AF) | |
|--------------------|--------|
| TOTAL INFLOW | 16,242 |
| TOTAL LOSSES | 263 |
| STORAGE CHANGE | -1,347 |
| CALC'D PERCOLATION | 17,326 |

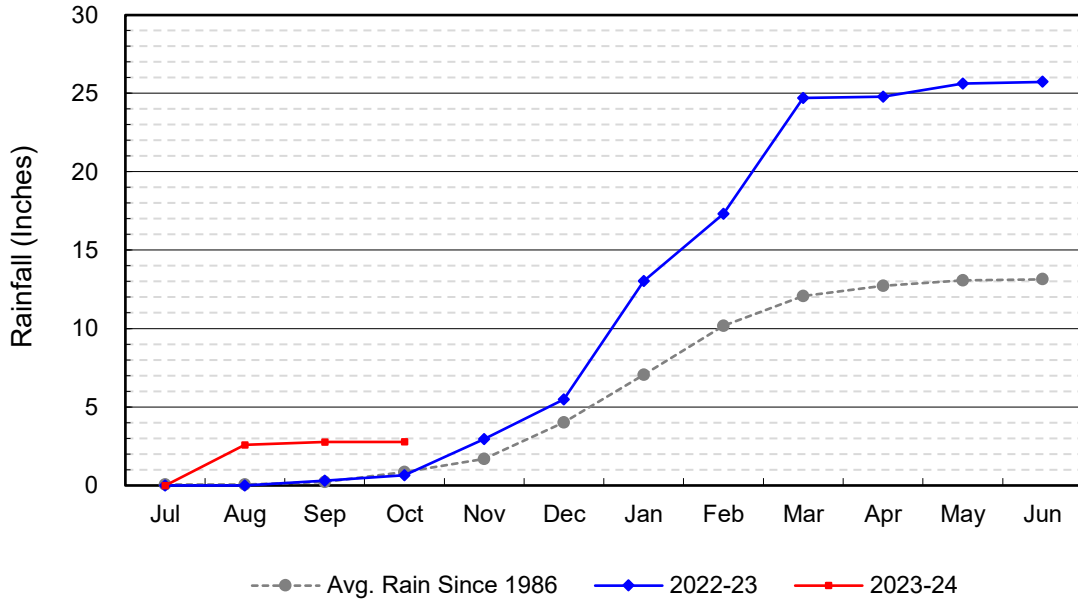
DEEP BASINS MONTHLY STATUS

October 2023

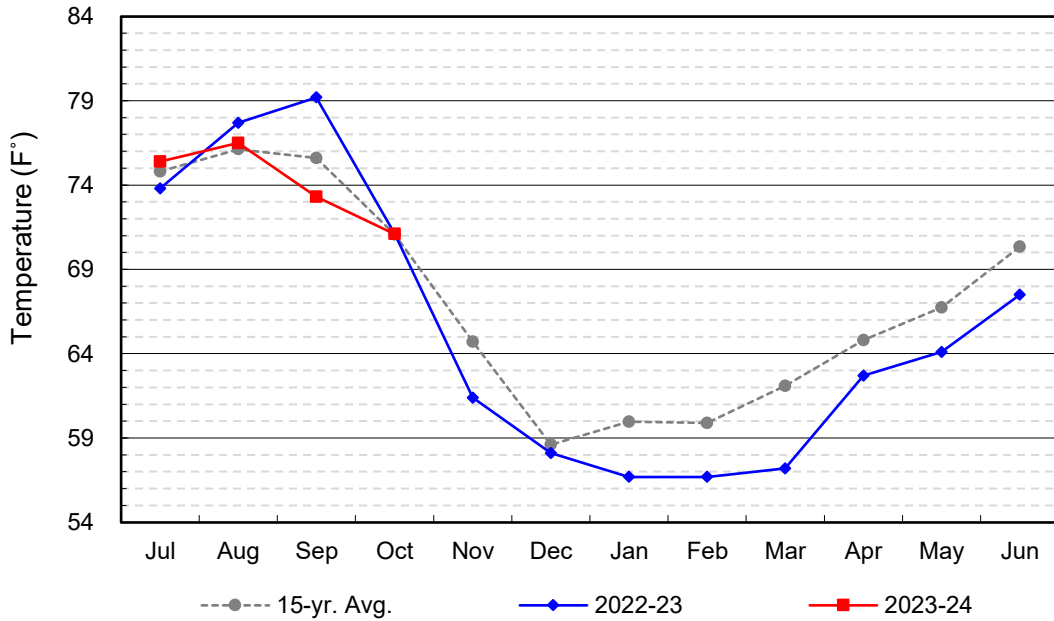
(values in acre-feet)

| <i>Facility</i> | <i>Storage Start</i> | <i>Storage End</i> | <i>Maximum Storage</i> | <i>Total Perc</i> | <i>Max Perc</i> | <i>Avg Perc</i> | <i>Avg W.S. Elev</i> |
|--------------------|--------------------------|------------------------|----------------------------|-----------------------|---------------------|---------------------|--------------------------|
| Desilting Ponds | 230 | 230 | 252 | na | na | na | na |
| Fos-Huckleberry | 526 | 536 | 628 | na | na | na | na |
| Conrock Basin | 550 | 560 | 661 | na | na | na | na |
| Warner Basins | 2,902 | 2,882 | 2,900 | 891 | na | na | 238 |
| Olive Pit | 16 | 16 | 95 | na | na | na | 200 |
| Anaheim Lake | 0 | 0 | 2,300 | 0 | 0 | 0 | 168 |
| Mini-Anaheim Lk | 0 | 0 | 10 | 0 | 0 | 0 | 220 |
| Miller Basin | 35 | 96 | 350 | 2,673 | 115 | 86 | 209 |
| Kraemer Basin | 120 | 233 | 1,055 | 716 | 55 | 23 | 177 |
| La Palma Basin | 81 | 3 | 101 | 2,940 | 122 | 95 | 218 |
| Mira Loma | 35 | 31 | 53 | 1,454 | 98 | 47 | 215 |
| La Jolla Basin | 0 | 7 | 20 | 278 | 32 | 9 | 200 |
| Placentia Basin | 0 | 0 | 200 | na | na | na | na |
| Raymond Basin | 100 | 5 | 200 | 233 | na | na | na |
| Five Coves Basins | 269 | 0 | 329 | na | na | na | na |
| Burris Pit | 1,458 | 481 | 2,500 | 343 | 36 | 11 | 151 |
| River View Basin | 3 | 0 | 8 | 108 | 19 | 4 | 187 |
| Fletcher Basin | 12 | 0 | 15 | 47 | 5 | 2 | 187 |
| Santiago (Bond) | 6,442 | 6,392 | 8,312 | 2,778 | 112 | 91 | 260 |
| Santiago (Blu Dia) | 3,352 | 3,312 | 5,259 | - | - | - | - |
| Totals | 16,131 | 14,784 | 25,247 | 12,461 | | | |
| | | | | | | | |
| Prado Dam | 13 | 3 | 20,000 | | | | |

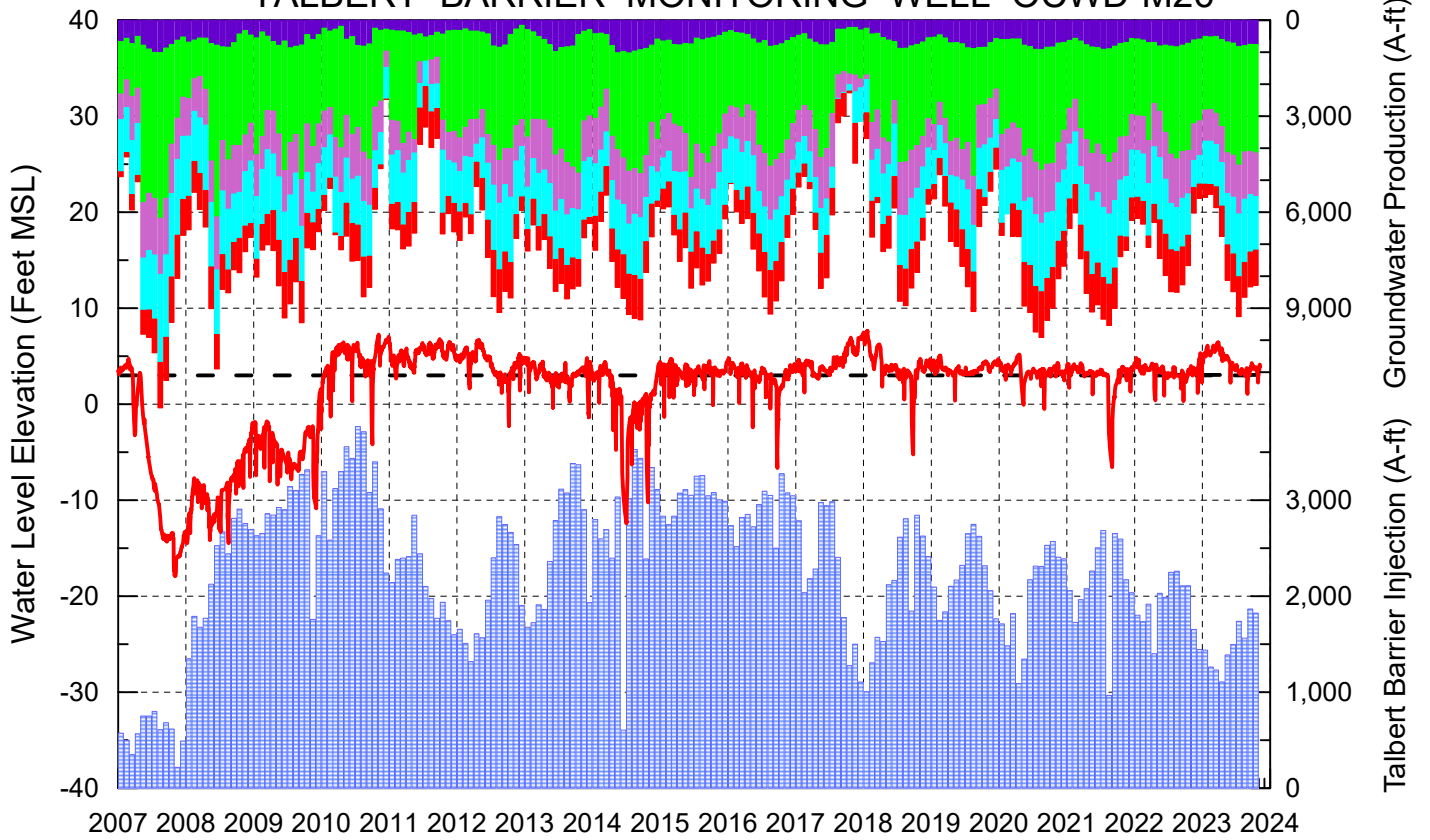
Cumulative Anaheim Field HQ Rainfall



Temperature at Santa Ana Fire Station



TALBERT BARRIER MONITORING WELL OCWD-M26



- Talbert/Lambda Aquifer Mergence Zone Perforated Interval: 71 - 135 ft. bgs
- ▨ Talbert Barrier Injection
- - - Protective Level to Prevent Seawater Intrusion
- ▨ Fountain Valley Groundwater Production
- ▨ IRWD Groundwater Production
- ▨ Mesa Water Groundwater Production
- ▨ Huntington Beach Groundwater Production
- ▨ Newport Beach Groundwater Production

