

WATER RESOURCES SUMMARY

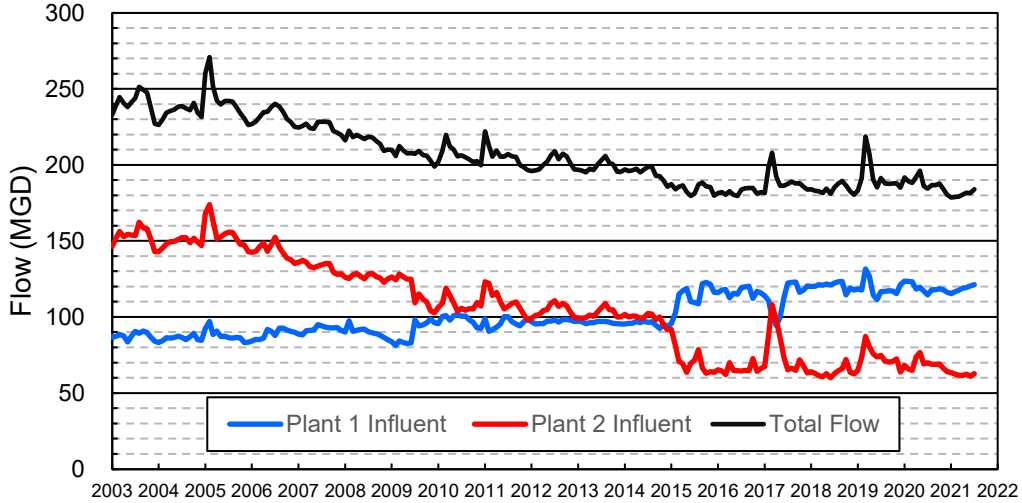
June 2021

INFLOWS & OUTFLOWS (acre-feet)	Total for Month	Year to Date - This Year Last Year	
BASIN SUPPLIES			
Water Purchases from MWD (excludes In Lieu)	0	0	18,098
Water into MWD Storage Account (excludes In Lieu)	0	0	0
SAR & Santiago Creek Flows (accounts for storage to/from recharge facilities)	6,968	117,452	179,455
GWRS Water to Forebay	5,091	61,418	70,133
GWRS Water to Mid-Basin Injection Wells	811	10,608	3,722
GWRS Water to Talbert Barrier	2,503	27,113	23,777
OC-44 Water to Talbert Barrier	0	16	2
Alamitos Barrier Water	190	2,528	2,100
Incidental Recharge (estimated)	2,000	30,000	41,362
Evaporation from Recharge Basins	(269)	(3,266)	(3,363)
River Flow Lost to Ocean	<u>0</u>	<u>(1,218)</u>	<u>(22,093)</u>
Total Groundwater Recharge	17,294	244,651	313,194
WATER PRODUCTION			
Groundwater Production	22,992	281,986	277,195
MWD Storage Program Withdrawals	<u>0</u>	<u>0</u>	<u>0</u>
Total Groundwater Production	22,992	281,986	277,195
BASIN BALANCE			
Change in Groundwater Storage	(5,698)	(37,335)	35,999
Change in Groundwater Storage excluding MWD Stored Water	(5,698)	(37,335)	35,999
Accumulated Overdraft	-----	237,335	200,000
Accumulated Overdraft excluding MWD Storage	-----	237,335	200,000
IN LIEU WATER			
OCWD In Lieu Purchases (MWD Cyclic Storage)	0	0	9,355
MWD In Lieu Storage	<u>0</u>	<u>0</u>	<u>0</u>
Total In Lieu	0	0	9,355
OTHER KEY INFORMATION			
1. MWD Water Deliveries to Producers	11,333	102,518	95,411
2. Basin Production Percentage	67.0%	73.3%	76.9%
3. Total Water Demand	36,073	402,840	388,656
4. Total GWRS Production	8,412	99,200	97,719
5. Green Acres Project Water	550	4,316	4,206
6. SAR Water Quality			
- Total Dissolved Solids (TDS) of SAR below Prado Dam (ppm)	680	-----	530
- Total Nitrogen of SAR below Prado Dam (ppm)	3.4	-----	1.2
7. Month-End Water Storage Behind Prado Dam	1	-----	1,482
8. Month-End Water Storage in Recharge Facilities	8,660	-----	15,739
9. Water Storage Change in Recharge Facilities	(1,343)	(7,079)	(1,044)
10. Total Artificial Recharge	15,294	214,651	271,833
11. Monthly Mean Temperature at Santa Ana Fire Station (°F)	70.6	-----	71.9
12. Rainfall at FHQ (inches)	0.00	5.75	14.02

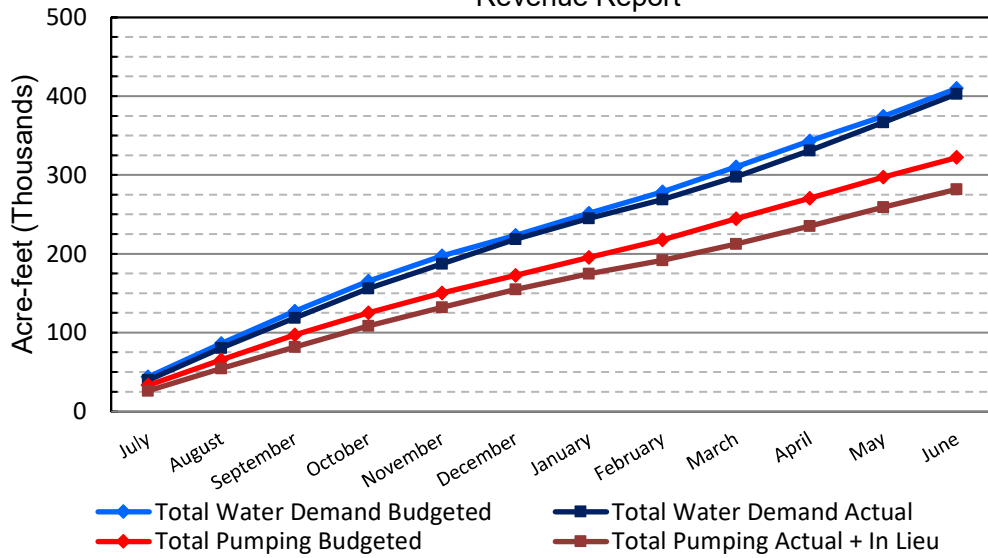
*** Note: Data are preliminary, subject to change

7/15/2021

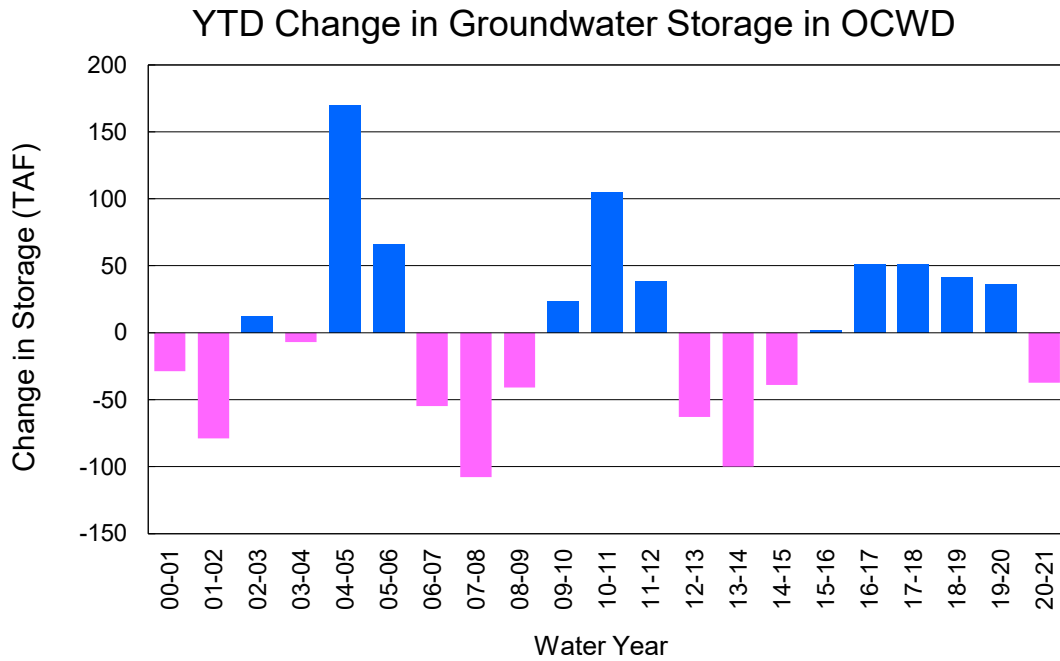
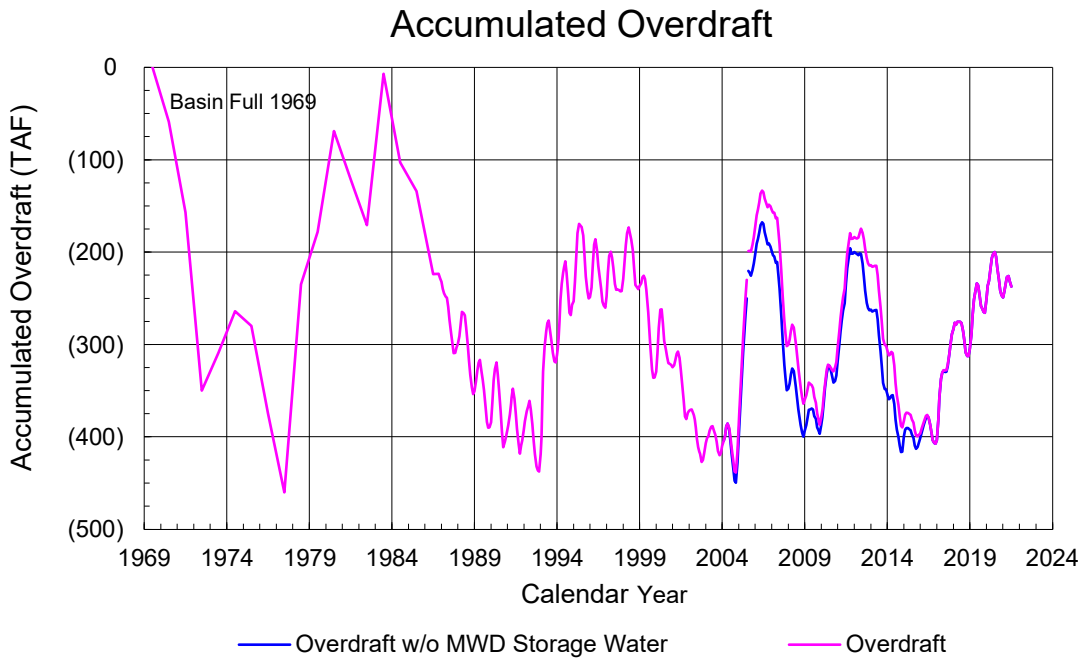
Orange County Sanitation District Influent Flows Report



2019-20 Water Demands/Groundwater Pumping + In Lieu/RA Revenue Report



	Monthly		Accumulated Total for the Year			
	Budget	Actual	Budget	Actual	Difference	Percent
Total Water Demand	35,700	36,073	410,000	402,840	-7,160	98.25%
Total Pumping + In Lieu	24,900	22,992	322,300	281,986	-40,314	87.49%
RA Revenue	\$11,503,800	\$10,622,413	\$148,902,600	\$130,277,306	-\$18,625,294	87.49%



PRODUCERS WATER USAGE SUMMARY

June 2021

(AF except BPP)

WATER AGENCY	Ground-water (1)	In Lieu	Reclaimed Water	Total Import (2)	Total Demand	2020-21 YTD Demand	2019-20 YTD Demand	YTD % Diff Demand	JUN 2021 BPP	2020-21 YTD BPP	2019-20 YTD BPP
Anaheim	1,470	0	0	3,349	4,819	57,493	57,118	101%	30.5%	27.0%	59.5%
Buena Park	1,110	0	0	151	1,261	13,308	13,246	100%	88.0%	88.9%	79.9%
East Orange County	0	0	0	95	95	983	787	125%	0.0%	7.2%	0.6%
Fountain Valley	863	0	202	0	1,066	10,546	9,875	107%	100.0%	100.0%	100.0%
Fullerton	1,626	0	0	737	2,364	24,557	23,797	103%	68.8%	71.8%	78.8%
Garden Grove	1,655	0	0	473	2,128	23,164	21,979	105%	77.8%	77.0%	50.2%
Golden State	1,407	0	0	823	2,230	24,276	22,980	106%	63.1%	69.8%	79.8%
West OC System	1,327	-	-	4	1,331	14,648	13,774	106%	na	na	na
East OC System	81	-	-	818	899	9,629	9,206	105%	na	na	na
Huntington Beach	1,919	0	0	182	2,101	27,348	25,966	105%	91.3%	85.8%	83.6%
Irvine Ranch	4,020	0	1,250	60	5,331	62,635	61,131	102%	98.5%	99.4%	99.8%
DRWF Clear	2,379	-	-	-	2,379	28,351	23,218	122%	na	na	na
DRWF Color	626	-	-	-	626	8,266	8,489	97%	na	na	na
Laguna Beach	0	0	0	310	310	3,599	3,451	na	0.0%	15.3%	51.8%
La Palma	178	0	0	0	178	1,990	1,960	102%	100.0%	100.0%	100.0%
Mesa Water (MW)	1,525	0	157	3	1,684	17,639	17,053	103%	99.8%	99.6%	98.0%
MW Clear	1,141	-	-	-	1,141	12,673	11,364	112%	na	na	na
MW Amber	384	-	-	-	384	3,878	3,885	100%	na	na	na
Newport Beach	1,305	0	101	36	1,441	15,583	14,852	105%	97.3%	95.5%	70.3%
Orange	1,234	0	0	1,438	2,672	27,894	26,927	104%	46.2%	75.2%	76.6%
OCWD (GAP)	116	0	0	0	116	1,606	1,586	101%	100.0%	100.0%	100.0%
Santa Ana	2,420	0	37	617	3,073	34,152	33,464	102%	79.7%	77.1%	77.0%
Seal Beach	91	0	0	235	325	3,443	3,281	105%	27.9%	68.0%	65.2%
Serrano	0	0	0	282	282	2,835	2,524	112%	0.0%	0.1%	55.0%
Tustin	491	0	0	560	1,051	11,254	10,450	108%	46.7%	80.1%	96.4%
Westminster	987	0	0	0	987	10,993	10,653	103%	100.0%	100.0%	77.0%
Yorba Linda	<u>0</u>	<u>0</u>	<u>0</u>	<u>1,970</u>	<u>1,970</u>	<u>20,369</u>	<u>19,346</u>	<u>105%</u>	<u>0.0%</u>	<u>52.7%</u>	<u>53.0%</u>
SUBTOTAL:	22,418	0	1,747	11,319	35,484	395,668	382,425	103%	67.0%	73.3%	76.9%
Other Producers (Est ~3% of Subtotal)	<u>574</u>	<u>0</u>	<u>0</u>	<u>15</u>	<u>588</u>	<u>7,171</u>	<u>6,230</u>	<u>115%</u>			
TOTAL:	22,992	0	1,747	11,333	36,072	402,840	388,656		67.0%	73.3%	76.9%
OCWD (Talbert Barrier)	0		2,503	0	2,503	27,130	23,780				
OCSD (GAP)	na		52	na	52	1,045	1,344				

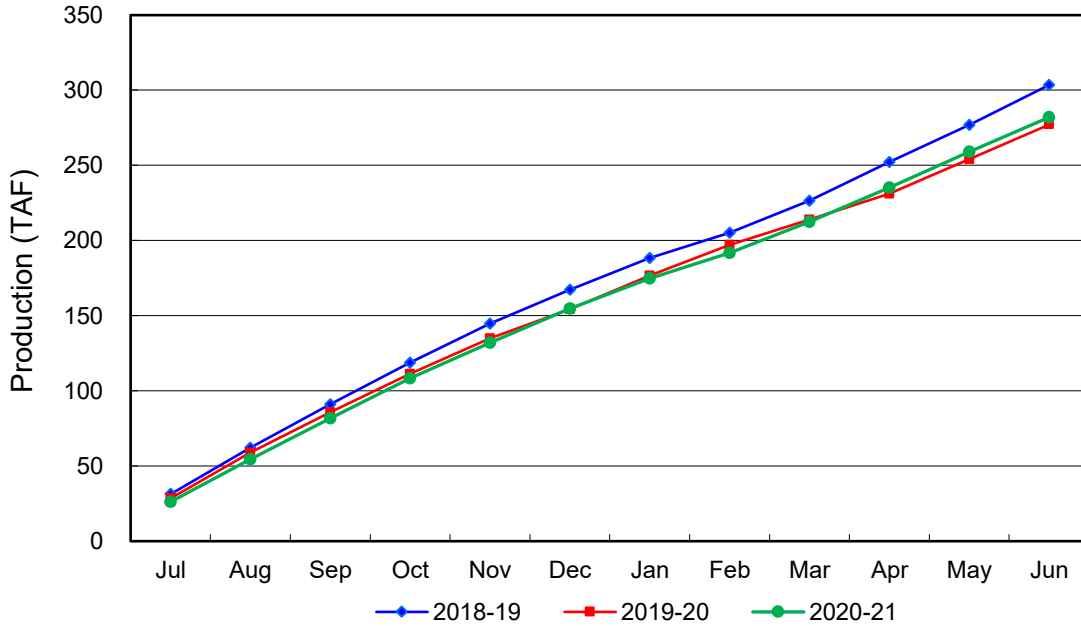
Estimated

(1) Excludes MWD CUP Withdrawals

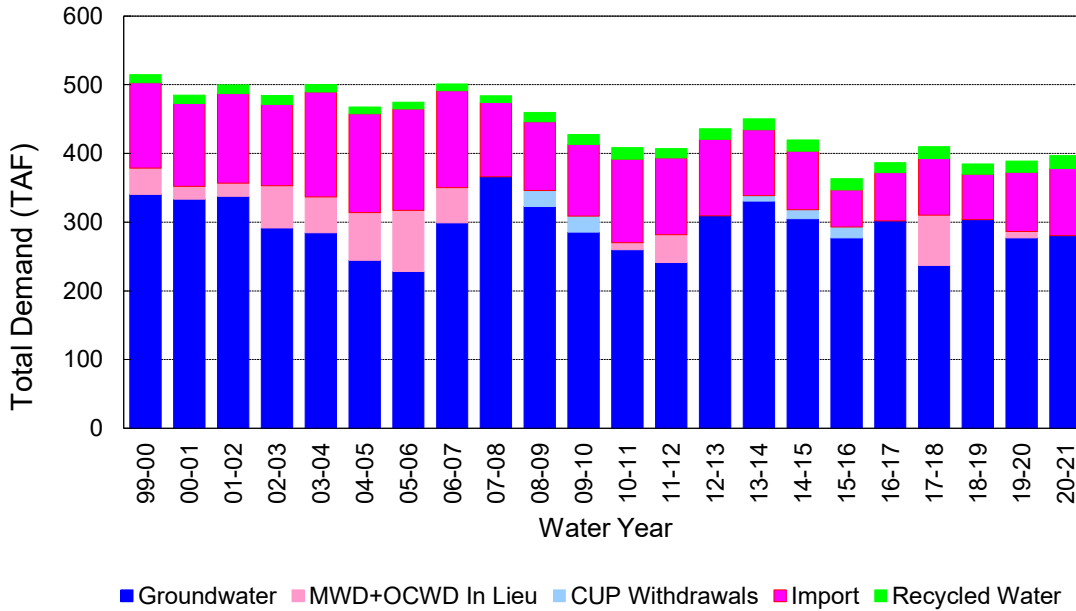
(2) Includes MWD CUP Withdrawals & In Lieu Water

7/15/2021 16:08

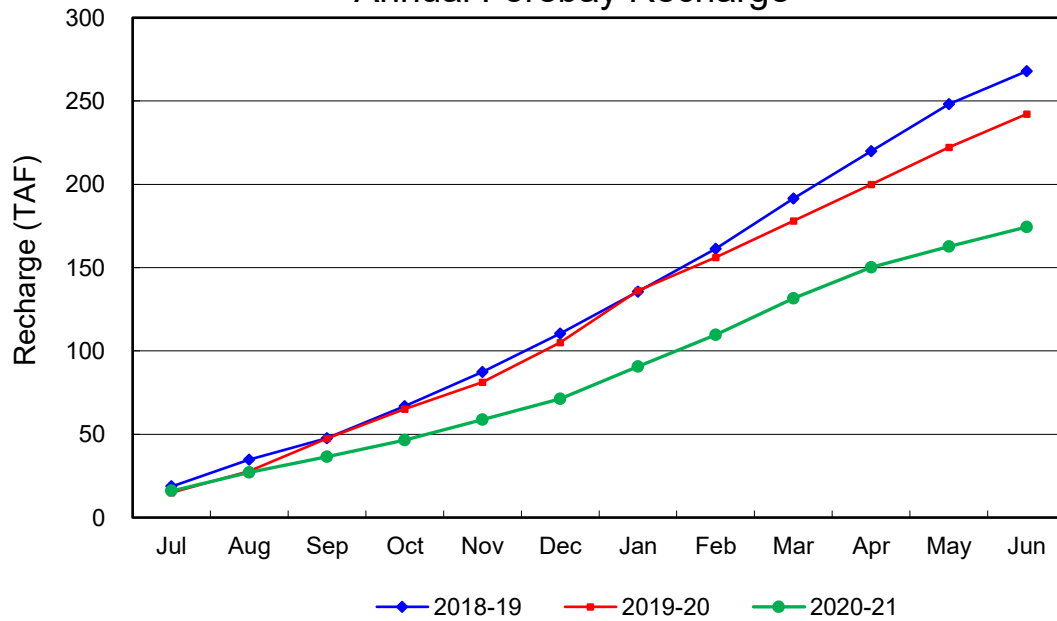
Annual Groundwater Production



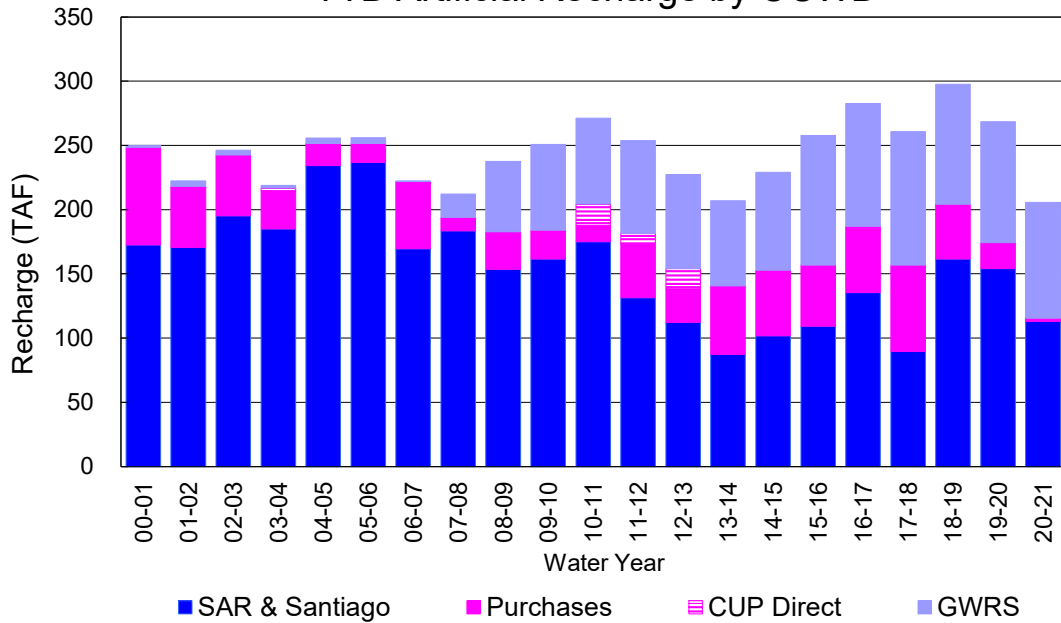
YTD Total Demand in OCWD



Annual Forebay Recharge



YTD Artificial Recharge by OCWD



RECHARGE AREAS REPORT

June 2021

	Percolation (AF)	Remarks
RIVER SYSTEM	2,869	48 cfs per day average perc
DESILTING SYSTEM	na	SAR
OFF-RIVER SYSTEM	1,216	
WARNER SYSTEM	1,143	SAR
OLIVE BASIN	na	Passive System
ANAHEIM LAKE	384	SAR
MINI-ANA LAKE	na	
MILLER BASIN	1,740	GWRS
KRAEMER BASIN	0	
LA PALMA BASIN	1,062	GWRS
MIRA LOMA	2,296	GWRS
LA JOLLA BASIN	40	
PLACENTIA BASIN	na	
RAYMOND BASIN	28	SAR
FIVE COVES BASIN	na	
BURRIS BASIN	931	SAR
RIVER VIEW BASIN	na	
FLETCHER BASIN	na	
SANTIAGO BASINS	82	
SANTIAGO CREEK	0	
TOTALS	11,791	
5-YR AVERAGE	18,595	

FLOWS TO RECHARGE AREAS (AF)	
Imperial Headgates (estimated)	5,625
GWRS	5,092
OC-28 (MWD)	0
OC-28a (MWD)	0
OC-59	0
	0
Est'd local Forebay inflow below Imperial	0
Est'd local Santiago inflow (estimated)	0
Irvine lake releases (OC-13 MWD)	0
Villa Park Dam releases (estimated)	0
Precip at Warner Basin (inches)	0.00
Precip direct to open water surfaces	0
TOTAL INFLOW	10,717

LOSSES FROM RECHARGE AREAS (AF)	
Est'd SAR flow past Chapman Ave.	0
Est'd Santiago Cr. flow to SAR	0
Est'd flows past Raymond Basin	0
Calc'd evap (inches) Estimated	6.27
Est'd evaporative losses	269
TOTAL LOSSES	269

STORAGE CHANGES (AF)			
Facility	Begin	End	Net
Deep basins	7,911	6,649	-1,262
Santiago Pits	2,092	2,011	-81
River			
Off-river			
Irvine Lake			
TOTAL	10,003	8,660	-1,343

SUMMARY (AF)	
TOTAL INFLOW	10,717
TOTAL LOSSES	269
STORAGE CHANGE	-1,343
CALC'D PERCOLATION	11,791

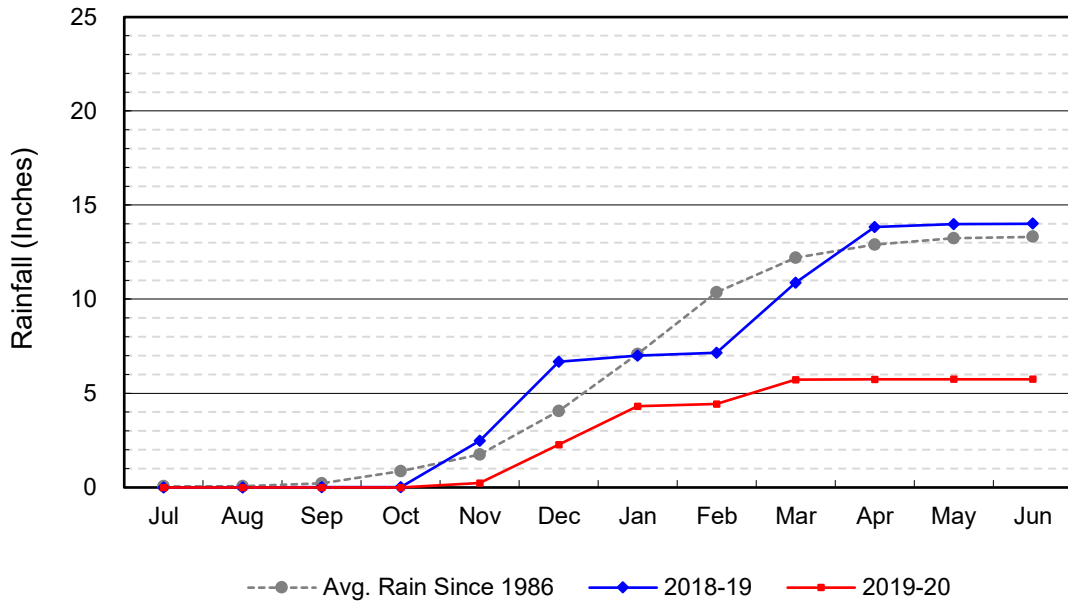
DEEP BASINS MONTHLY STATUS

June 2021

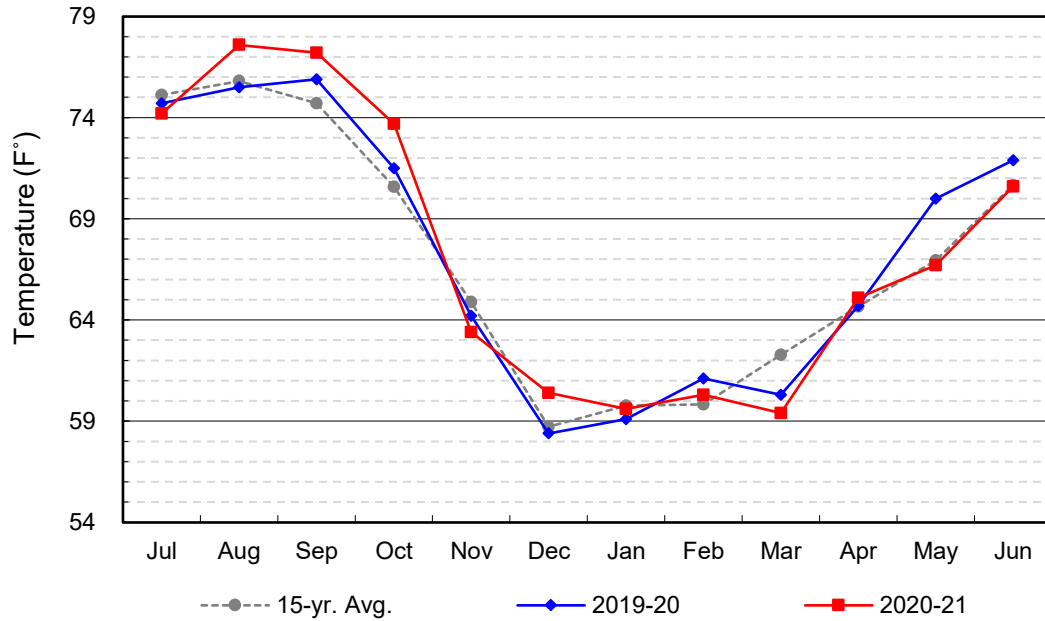
(values in acre-feet)

<i>Facility</i>	<i>Storage Start</i>	<i>Storage End</i>	<i>Maximum Storage</i>	<i>Total Perc</i>	<i>Max Perc</i>	<i>Avg Perc</i>	<i>Avg W.S. Elev</i>
Desilting Ponds	220	200	252	na	na	na	na
Fos-Huckleberry	520	531	628	na	na	na	na
Conrock Basin	550	562	661	na	na	na	na
Warner Basins	2,906	2,764	2,900	1,143	15	12	238
Olive Pit	30	14	95	na	na	na	204
Anaheim Lake	857	390	2,300	384	19	13	194
Mini-Anaheim Lk	0	0	10	na	na	na	na
Miller Basin	45	40	350	1,740	73	58	206
Kraemer Basin	0	0	1,055	0	0	0	164
La Palma Basin	50	55	101	1,062	37	35	216
Mira Loma	31	35	53	2,296	88	77	218
La Jolla Basin	0	0	20	40	14	1	199
Placentia Basin	0	0	200	na	na	na	na
Raymond Basin	0	0	200	28	na	na	na
Five Coves Basins	276	199	329	na	na	na	na
Burris Pit	2,426	1,859	2,500	931	38	31	169
River View Basin	0	0	8	na	na	na	na
Fletcher Basin	0	0	15	na	na	na	na
Santiago (Bond)	1,240	1,194	8,312	82	8	4	187
Santiago (Blu Dia)	852	817	5,259	-	-	-	-
Totals	10,003	8,660	25,247	7,706			
Prado Dam	2	1	25,000				

Cumulative Anaheim Field HQ Rainfall



Temperature at Santa Ana Fire Station



TALBERT BARRIER MONITORING WELL OCWD-M26

