

WATER RESOURCES SUMMARY

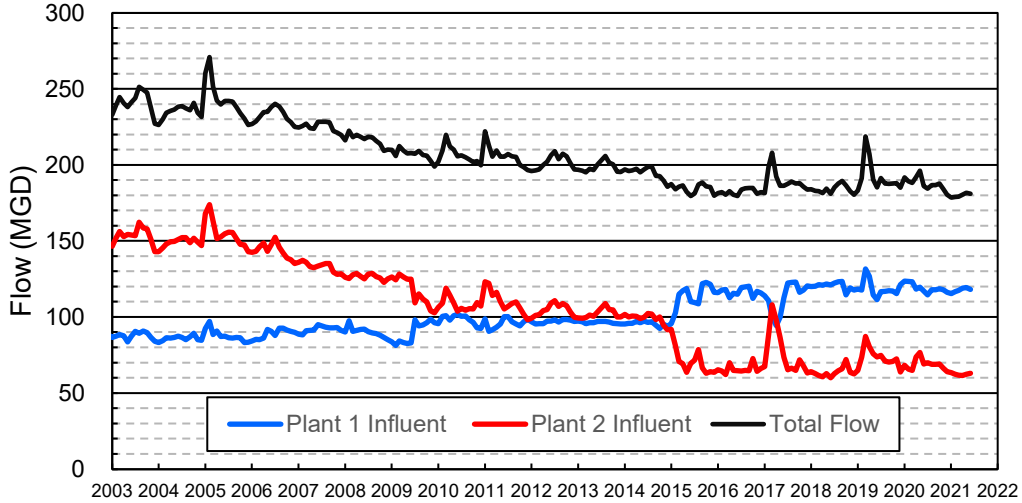
May 2021

INFLOWS & OUTFLOWS (acre-feet)	Total for Month	Year to Date - This Year Last Year	
BASIN SUPPLIES			
Water Purchases from MWD (excludes In Lieu)	0	0	18,098
Water into MWD Storage Account (excludes In Lieu)	0	0	0
SAR & Santiago Creek Flows (accounts for storage to/from recharge facilities)	7,744	110,573	164,251
GWRS Water to Forebay	5,240	56,328	64,875
GWRS Water to Mid-Basin Injection Wells	809	9,797	2,798
GWRS Water to Talbert Barrier	2,262	24,609	21,606
OC-44 Water to Talbert Barrier	1	16	2
Alamitos Barrier Water	103	2,228	1,901
Incidental Recharge (estimated)	3,500	35,200	39,700
Evaporation from Recharge Basins	(299)	(2,997)	(2,997)
River Flow Lost to Ocean	<u>0</u>	<u>(1,218)</u>	<u>(22,093)</u>
Total Groundwater Recharge	19,359	234,536	288,142
WATER PRODUCTION			
Groundwater Production	23,845	258,994	254,156
MWD Storage Program Withdrawals	<u>0</u>	<u>0</u>	<u>0</u>
Total Groundwater Production	23,845	258,994	254,156
BASIN BALANCE			
Change in Groundwater Storage	(4,485)	(24,458)	33,985
Change in Groundwater Storage excluding MWD Stored Water	(4,485)	(24,458)	33,985
Accumulated Overdraft	-----	224,458	202,014
Accumulated Overdraft excluding MWD Storage	-----	224,458	202,014
IN LIEU WATER			
OCWD In Lieu Purchases (MWD Cyclic Storage)	0	0	9,355
MWD In Lieu Storage	<u>0</u>	<u>0</u>	<u>0</u>
Total In Lieu	0	0	9,355
OTHER KEY INFORMATION			
1. MWD Water Deliveries to Producers	10,242	91,179	83,532
2. Basin Production Percentage	70.0%	74.0%	78.0%
3. Total Water Demand	35,824	366,889	352,108
4. Total GWRS Production	8,312	90,788	89,361
5. Green Acres Project Water	507	3,894	3,654
6. SAR Water Quality			
- Total Dissolved Solids (TDS) of SAR below Prado Dam (ppm)	756	-----	462
- Total Nitrogen of SAR below Prado Dam (ppm)	4.7	-----	1.9
7. Month-End Water Storage Behind Prado Dam	2	-----	9,032
8. Month-End Water Storage in Recharge Facilities	9,783	-----	16,876
9. Water Storage Change in Recharge Facilities	(978)	(5,956)	93
10. Total Artificial Recharge	15,859	199,336	248,443
11. Monthly Mean Temperature at Santa Ana Fire Station (°F)	66.7	-----	70.0
12. Rainfall at FHQ (inches)	0.01	5.75	13.98

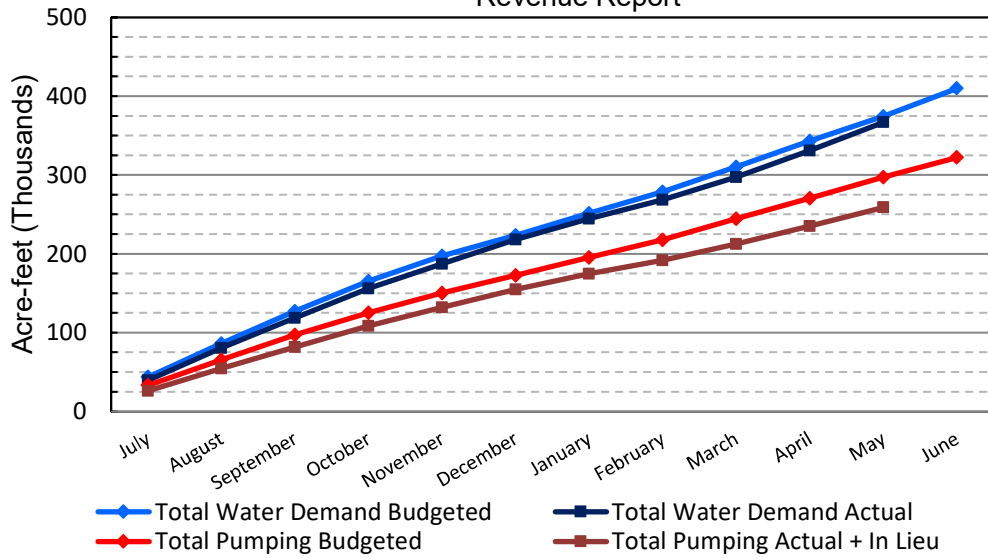
*** Note: Data are preliminary, subject to change

6/10/2021

Orange County Sanitation District Influent Flows Report

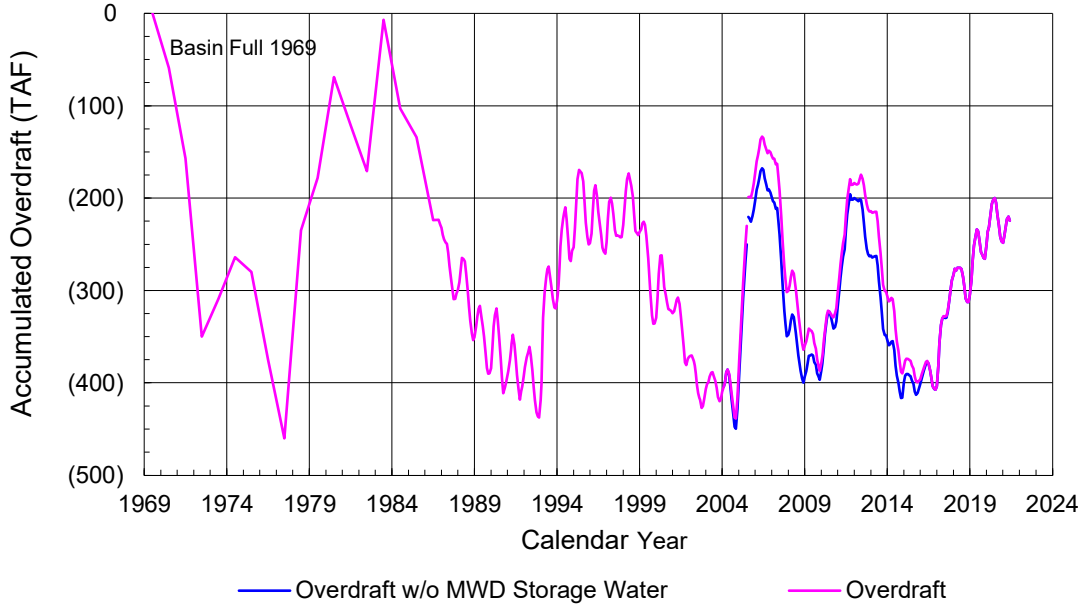


2019-20 Water Demands/Groundwater Pumping + In Lieu/RA Revenue Report

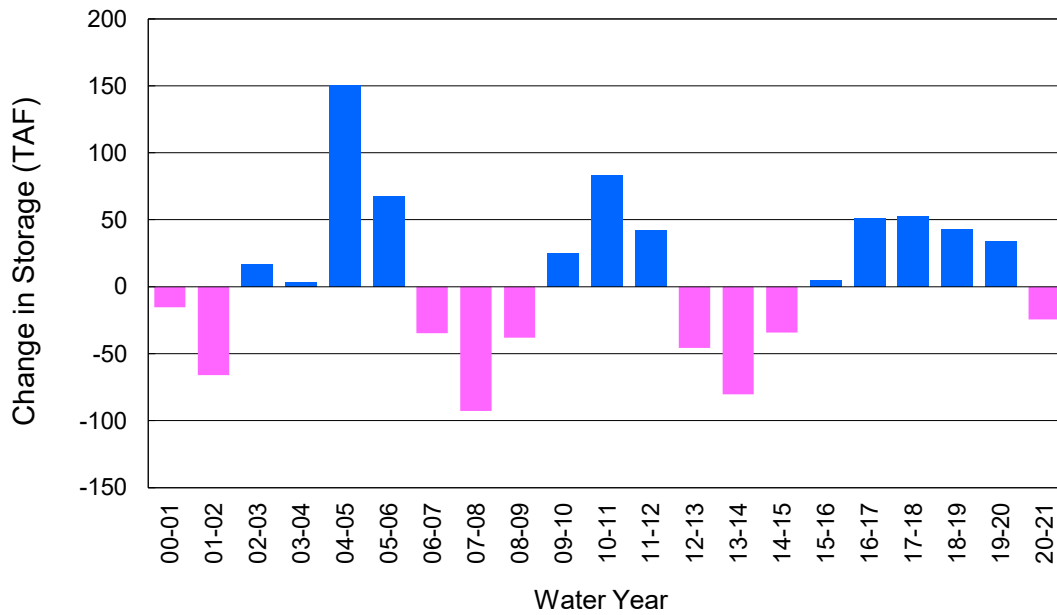


	Monthly		Accumulated Total for the Year			
	Budget	Actual	Budget	Actual	Difference	Percent
Total Water Demand	31,300	35,824	374,300	366,889	-7,411	98.02%
Total Pumping + In Lieu	26,900	23,845	297,400	258,994	-38,406	87.09%
RA Revenue	\$12,427,800	\$11,016,293	\$137,398,800	\$119,655,083	-\$17,743,717	87.09%

Accumulated Overdraft



YTD Change in Groundwater Storage in OCWD



PRODUCERS WATER USAGE SUMMARY

May 2021

(AF except BPP)

WATER AGENCY	Ground-water (1)	In Lieu	Reclaimed Water	Total Import (2)	Total Demand	2020-21 YTD Demand	2019-20 YTD Demand	YTD % Diff Demand	MAY 2021 BPP	2020-21 YTD BPP	2019-20 YTD BPP
Anaheim	1,460	0	0	3,550	5,010	52,675	51,737	102%	29.1%	26.7%	62.9%
Buena Park	1,109	0	0	108	1,217	12,047	11,925	101%	91.1%	89.0%	79.4%
East Orange County	0	0	0	84	85	888	711	125%	0.5%	8.0%	0.6%
Fountain Valley	832	0	251	0	1,083	9,600	8,929	108%	100.0%	100.0%	100.0%
Fullerton	1,674	0	0	553	2,227	22,193	21,517	103%	75.2%	72.1%	78.8%
Garden Grove	1,767	0	0	313	2,080	21,036	19,912	106%	85.0%	77.0%	51.6%
Golden State	1,408	0	0	749	2,157	22,047	20,729	106%	65.3%	70.4%	80.3%
West OC System	1,323	-	-	3	1,326	13,317	12,443	107%	na	na	na
East OC System	85	-	-	746	831	8,730	8,287	105%	na	na	na
Huntington Beach	2,308	0	0	191	2,499	25,247	23,390	108%	92.4%	85.3%	83.7%
Irvine Ranch	4,504	0	1,280	21	5,805	57,305	55,852	103%	99.5%	99.5%	99.8%
DRWF Clear	2,655	-	-	-	2,655	25,973	20,718	125%	na	na	na
DRWF Color	677	-	-	-	677	7,639	7,795	98%	na	na	na
Laguna Beach	0	0	0	300	300	3,283	3,135	na	0.0%	16.8%	57.0%
La Palma	175	0	0	0	175	1,812	1,774	102%	100.0%	100.0%	100.0%
Mesa Water (MW)	1,486	0	109	0	1,594	15,964	15,334	104%	100.0%	99.6%	97.7%
MW Clear	1,163	-	-	-	1,163	11,532	10,510	110%	na	na	na
MW Amber	322	-	-	-	322	3,494	3,215	109%	na	na	na
Newport Beach	1,158	0	70	203	1,431	14,142	13,315	106%	85.1%	95.3%	66.9%
Orange	1,262	0	0	1,031	2,293	25,221	24,498	103%	55.0%	78.2%	79.1%
OCWD (GAP)	144	0	0	0	144	1,490	1,409	106%	100.0%	100.0%	100.0%
Santa Ana	2,203	0	26	535	2,764	31,078	30,351	102%	80.5%	76.9%	77.7%
Seal Beach	306	0	0	0	307	3,117	2,936	106%	99.8%	72.2%	69.7%
Serrano	0	0	0	257	257	2,553	2,253	113%	0.0%	0.1%	61.6%
Tustin	476	0	0	502	978	10,203	9,428	108%	48.7%	83.5%	96.4%
Westminster	976	0	0	0	976	10,006	9,681	103%	100.0%	100.0%	75.9%
Yorba Linda	<u>0</u>	<u>0</u>	<u>0</u>	<u>1,833</u>	<u>1,833</u>	<u>18,399</u>	<u>17,431</u>	<u>106%</u>	<u>0.0%</u>	<u>58.4%</u>	<u>57.8%</u>
SUBTOTAL:	23,250	0	1,736	10,229	35,215	360,306	346,247	104%	70.0%	74.0%	78.0%
Other Producers (Est ~3% of Subtotal)	<u>595</u>	<u>0</u>	<u>0</u>	<u>13</u>	<u>608</u>	<u>6,583</u>	<u>5,861</u>	<u>112%</u>			
TOTAL:	23,845	0	1,736	10,242	35,824	366,889	352,108		70.0%	74.0%	78.0%
OCWD (Talbert Barrier)	0		2,262	1	2,263	24,626	21,609				
OCSD (GAP)	na		50	na	50	993	1,197				

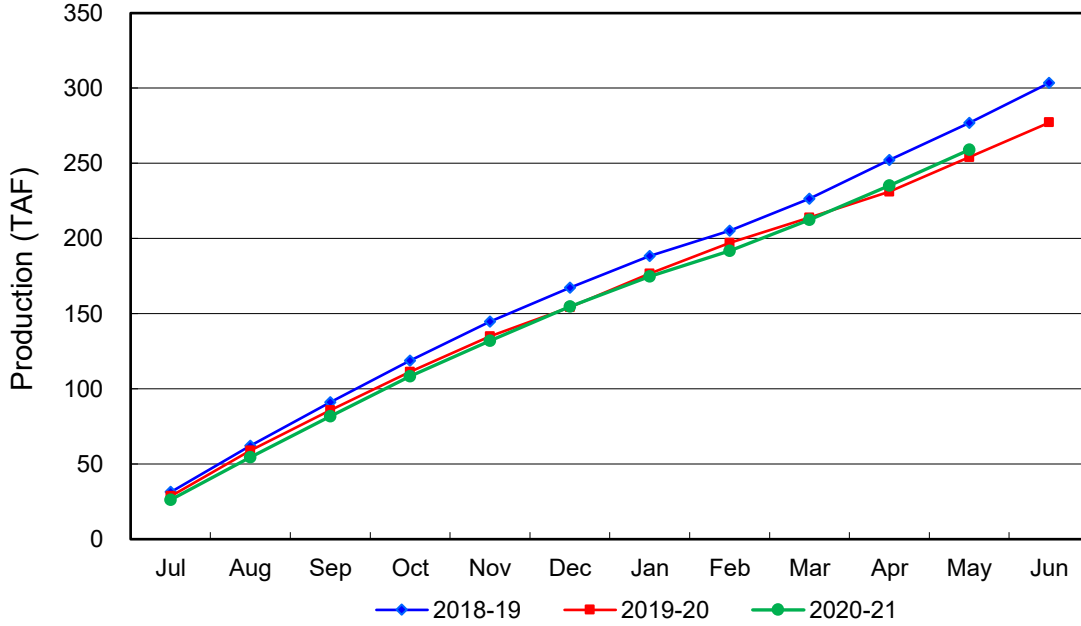
Estimated

(1) Excludes MWD CUP Withdrawals

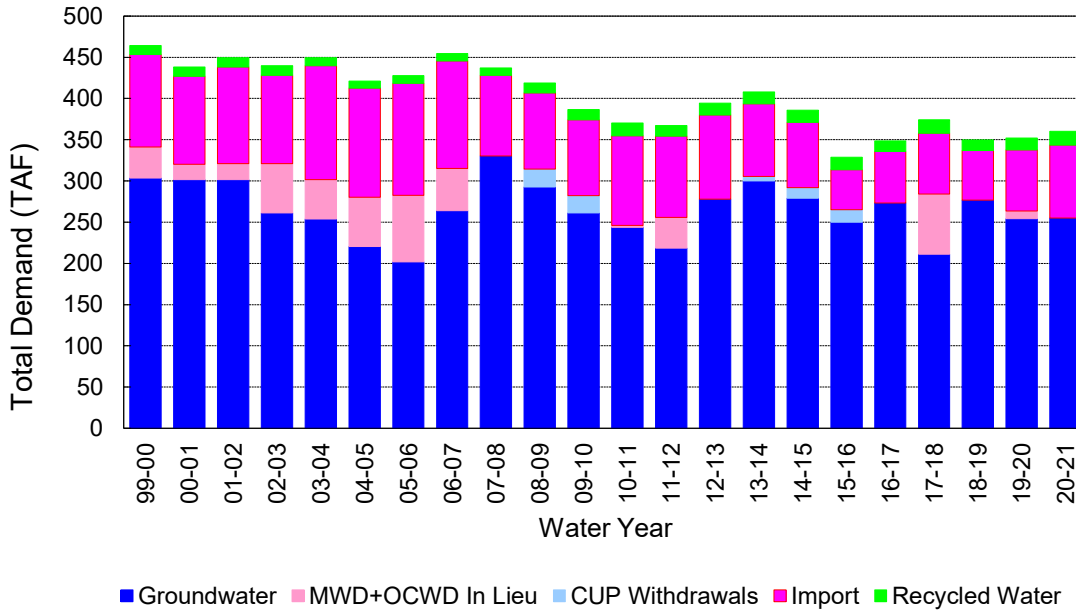
(2) Includes MWD CUP Withdrawals & In Lieu Water

6/10/2021 14:57

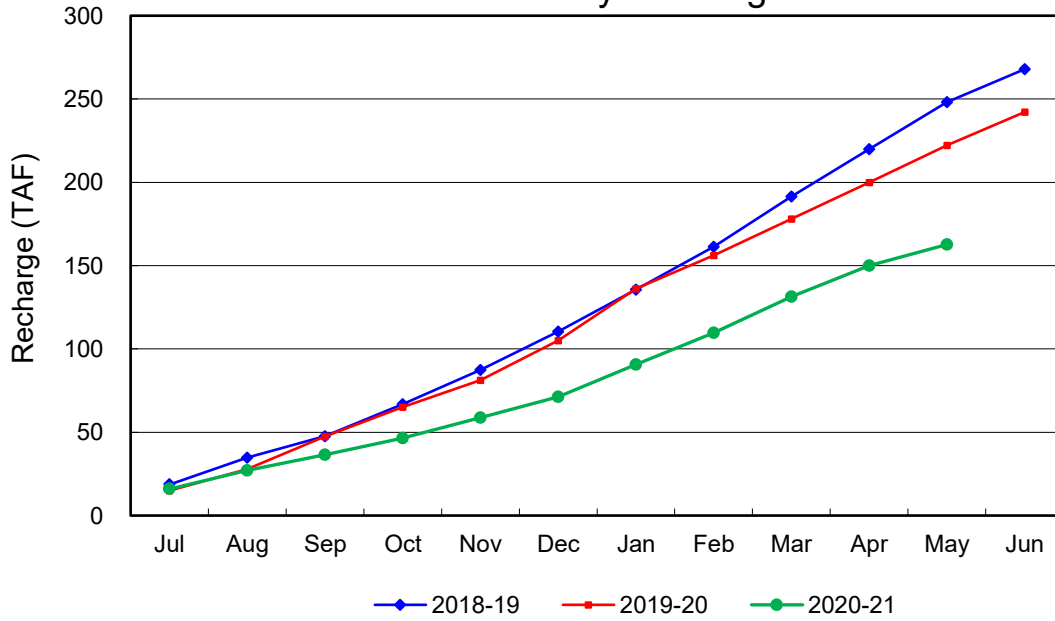
Annual Groundwater Production



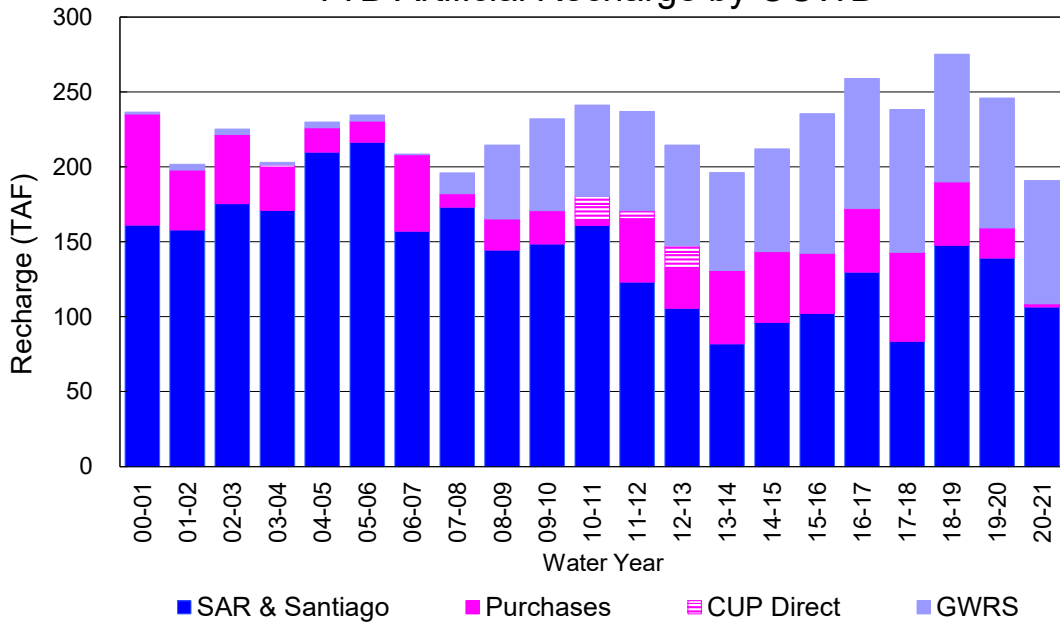
YTD Total Demand in OCWD



Annual Forebay Recharge



YTD Artificial Recharge by OCWD



RECHARGE AREAS REPORT

May 2021

	Percolation (AF)	Remarks
RIVER SYSTEM	3,597	58 cfs per day average perc
DESILTING SYSTEM	na	
OFF-RIVER SYSTEM	1,193	SAR
WARNER SYSTEM	481	SAR
OLIVE BASIN	na	Passive System, 212 af of perc for the month.
ANAHEIM LAKE	765	SAR
MINI-ANA LAKE	0	
MILLER BASIN	361	Cleaned, Kraemer pumped water
KRAEMER BASIN	14	SAR
LA PALMA BASIN	1,888	GWRS
MIRA LOMA	3,050	GWRS
LA JOLLA BASIN	55	SAR, Kraemer pumped water
PLACENTIA BASIN	na	
RAYMOND BASIN	120	SAR, Kraemer pumped water
FIVE COVES BASIN	na	
BURRIS BASIN	1,084	SAR
RIVER VIEW BASIN	0	
FLETCHER BASIN	0	
SANTIAGO BASINS	79	Local nuisance
SANTIAGO CREEK	0	
TOTALS	12,687	
5-YR AVERAGE	21,542	

FLOWS TO RECHARGE AREAS (AF)	
Imperial Headgates (estimated)	6,734
GWRS	5,242
OC-28 (MWD)	0
OC-28a (MWD)	0
OC-59	0
	0
Est'd local Forebay inflow below Imperial	31
Est'd local Santiago inflow (estimated)	0
Irvine lake releases (OC-13 MWD)	0
Villa Park Dam releases (estimated)	0
Precip at Warner Basin (inches)	0.01
Precip direct to open water surfaces	1
TOTAL INFLOW	12,007

LOSSES FROM RECHARGE AREAS (AF)	
Est'd SAR flow past Chapman Ave.	0
Est'd Santiago Cr. flow to SAR	0
Est'd flows past Raymond Basin	0
Calc'd evap (inches) Estimated	5.12
Est'd evaporative losses	299
TOTAL LOSSES	299

STORAGE CHANGES (AF)			
Facility	Begin	End	Net
Deep basins	8,620	7,691	-929
Santiago Pits	2,141	2,092	-49
River			
Off-river			
Irvine Lake			
TOTAL	10,761	9,783	-978

SUMMARY (AF)	
TOTAL INFLOW	12,007
TOTAL LOSSES	299
STORAGE CHANGE	-978
CALC'D PERCOLATION	12,687

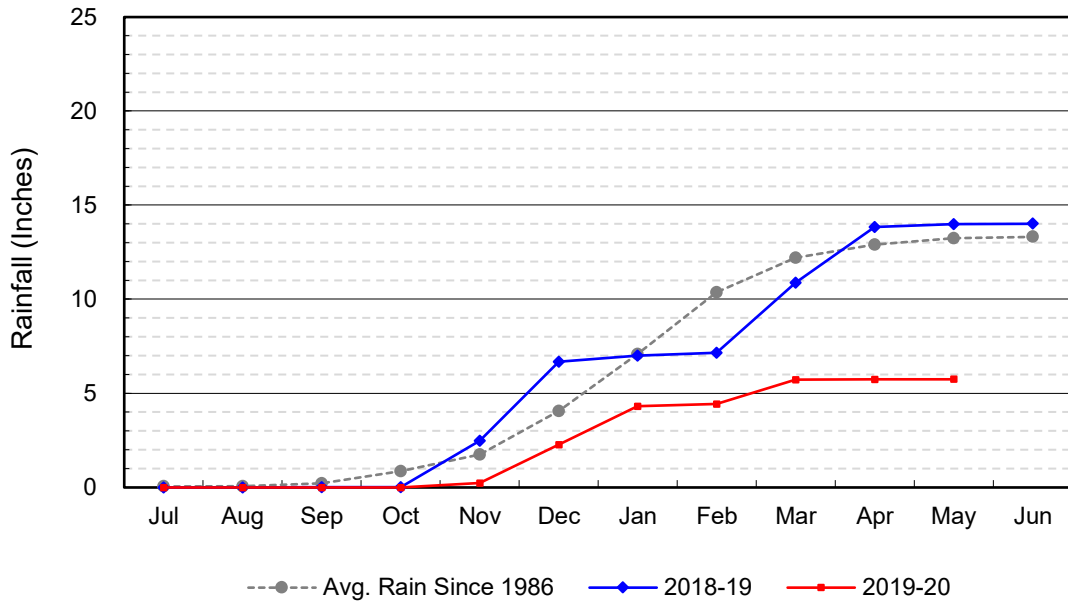
DEEP BASINS MONTHLY STATUS

May 2021

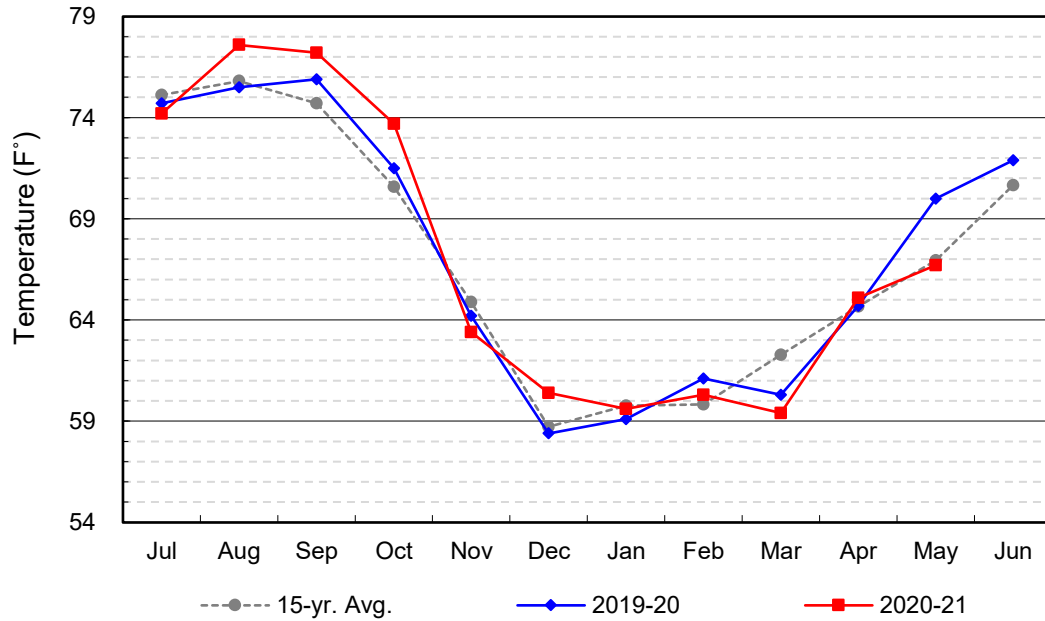
(values in acre-feet)

<i>Facility</i>	<i>Storage Start</i>	<i>Storage End</i>	<i>Maximum Storage</i>	<i>Total Perc</i>	<i>Max Perc</i>	<i>Avg Perc</i>	<i>Avg W.S. Elev</i>
Desilting Ponds	220	0	252	na	na	na	na
Fos-Huckleberry	522	520	628	na	na	na	na
Conrock Basin	549	550	661	na	na	na	na
Warner Basins	2,890	2,906	2,900	481	na	na	238
Olive Pit	29	30	95	na	na	na	203
Anaheim Lake	1,299	857	2,300	765	39	25	203
Mini-Anaheim Lk	1	0	10	0	0	0	220
Miller Basin	0	45	350	361	48	12	202
Kraemer Basin	185	0	1,055	14	2	0	169
La Palma Basin	64	50	101	1,888	91	61	217
Mira Loma	24	31	53	3,050	111	98	217
La Jolla Basin	5	0	20	55	35	2	200
Placentia Basin	0	0	200	na	na	na	na
Raymond Basin	100	0	200	120	na	na	na
Five Coves Basins	249	276	329	na	na	na	na
Burriss Pit	2,483	2,426	2,500	1,084	40	35	171
River View Basin	0	0	8	0	0	0	186
Fletcher Basin	0	0	15	0	0	0	184
Santiago (Bond)	1,275	1,240	8,312	79	15	3	187
Santiago (Blu Dia)	866	852	5,259	-	-	-	-
Totals	10,761	9,783	25,247	7,897			
Prado Dam	2	2	25,000				

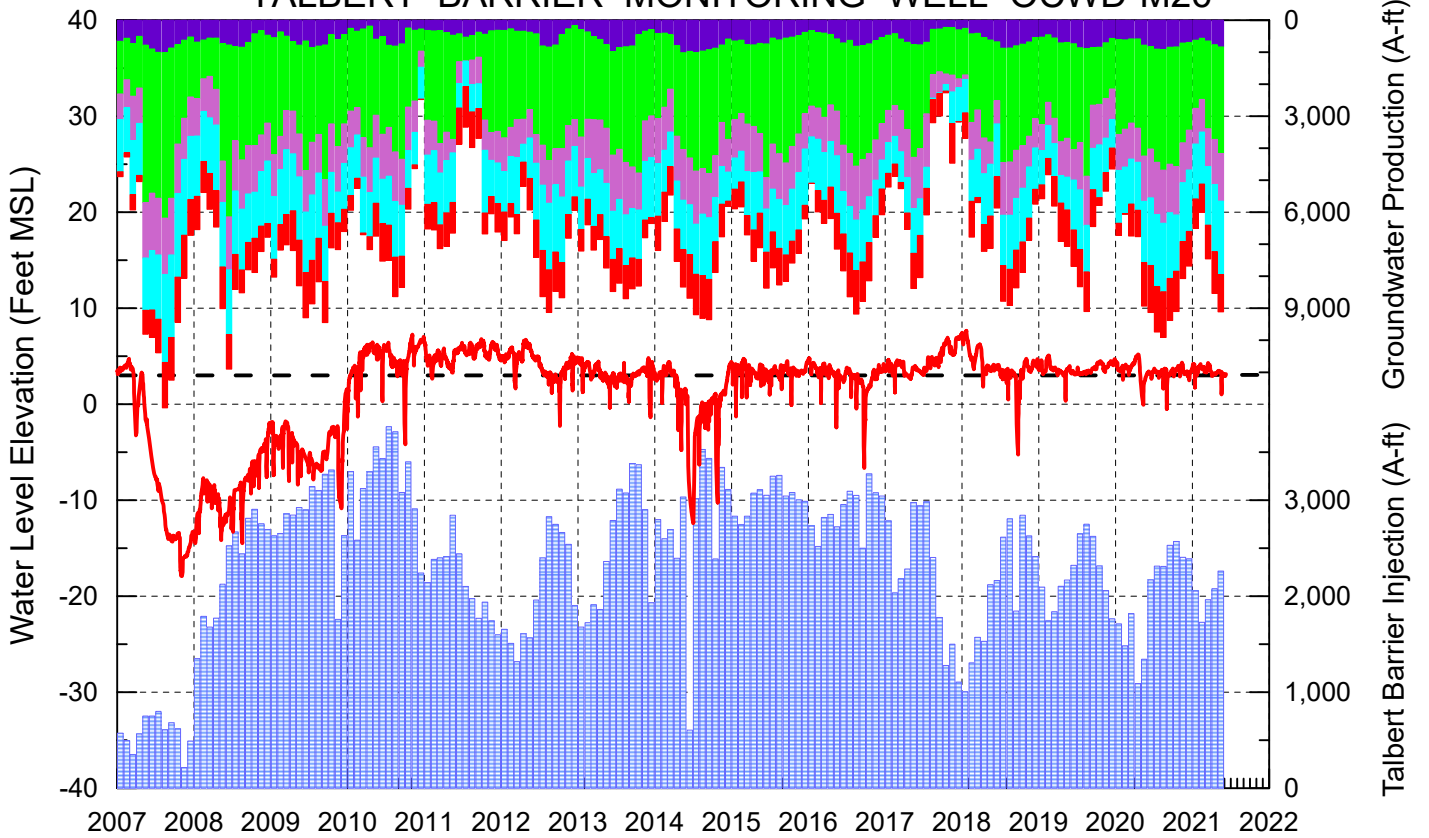
Cumulative Anaheim Field HQ Rainfall



Temperature at Santa Ana Fire Station



TALBERT BARRIER MONITORING WELL OCWD-M26



- | | |
|---|---|
| Talbert/Lambda Aquifer Mergence Zone
Perforated Interval: 71 - 135 ft. bgs | Fountain Valley Groundwater Production |
| Talbert Barrier Injection | IRWD Groundwater Production |
| Protective Level to Prevent Seawater Intrusion | Mesa Water Groundwater Production |
| | Huntington Beach Groundwater Production |
| | Newport Beach Groundwater Production |

