

WATER RESOURCES SUMMARY

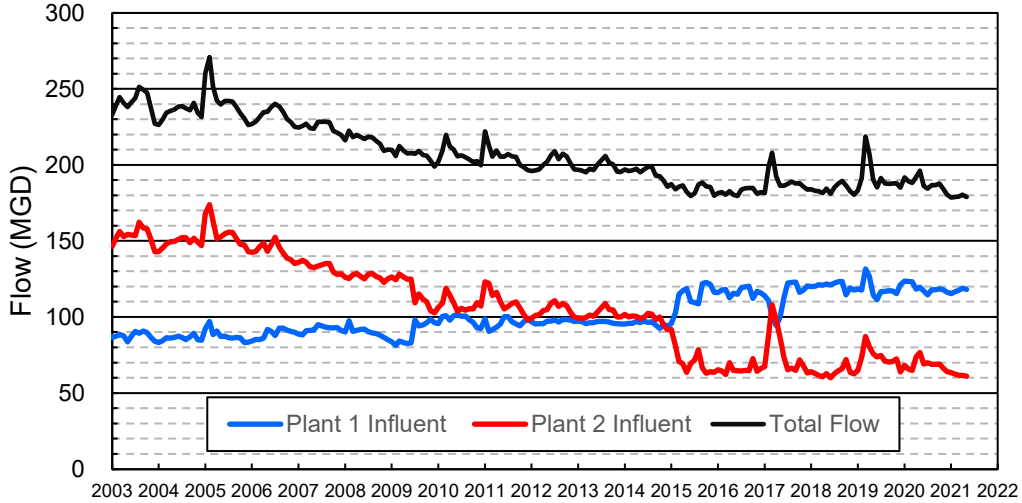
April 2021

| INFLOWS & OUTFLOWS (acre-feet) | Total for Month | Year to Date - This Year Last Year | |
|--|--------------------|--|-----------------|
| BASIN SUPPLIES | | | |
| Water Purchases from MWD (excludes In Lieu) | 0 | 0 | 18,098 |
| Water into MWD Storage Account (excludes In Lieu) | 0 | 0 | 0 |
| SAR & Santiago Creek Flows (accounts for storage to/from recharge facilities) | 13,533 | 102,829 | 145,274 |
| GWRS Water to Forebay | 5,367 | 51,088 | 61,240 |
| GWRS Water to Mid-Basin Injection Wells | 815 | 8,988 | 2,266 |
| GWRS Water to Talbert Barrier | 2,079 | 22,347 | 20,261 |
| OC-44 Water to Talbert Barrier | 0 | 15 | 0 |
| Alamitos Barrier Water | 115 | 2,141 | 1,750 |
| Incidental Recharge (estimated) | 4,000 | 31,700 | 36,700 |
| Evaporation from Recharge Basins | (292) | (2,698) | (2,698) |
| River Flow Lost to Ocean | <u>0</u> | <u>(1,218)</u> | <u>(22,093)</u> |
| Total Groundwater Recharge | 25,617 | 215,192 | 260,798 |
| WATER PRODUCTION | | | |
| Groundwater Production | 22,481 | 234,580 | 231,061 |
| MWD Storage Program Withdrawals | <u>0</u> | <u>0</u> | <u>0</u> |
| Total Groundwater Production | 22,481 | 234,580 | 231,061 |
| BASIN BALANCE | | | |
| Change in Groundwater Storage | 3,136 | (19,388) | 29,737 |
| Change in Groundwater Storage excluding MWD Stored Water | 3,136 | (19,388) | 29,737 |
| Accumulated Overdraft | ----- | 219,388 | 206,261 |
| Accumulated Overdraft excluding MWD Storage | ----- | 219,388 | 206,261 |
| IN LIEU WATER | | | |
| OCWD In Lieu Purchases (MWD Cyclic Storage) | 0 | 0 | 9,355 |
| MWD In Lieu Storage | <u>0</u> | <u>0</u> | <u>0</u> |
| Total In Lieu | 0 | 0 | 9,355 |
| OTHER KEY INFORMATION | | | |
| 1. MWD Water Deliveries to Producers | 9,083 | 80,820 | 72,776 |
| 2. Basin Production Percentage | 71.2% | 74.4% | 79.1% |
| 3. Total Water Demand | 33,214 | 330,381 | 317,022 |
| 4. Total GWRS Production | 8,263 | 82,476 | 83,844 |
| 5. Green Acres Project Water | 466 | 3,387 | 3,353 |
| 6. SAR Water Quality | | | |
| - Total Dissolved Solids (TDS) of SAR below Prado Dam (ppm) | 758 | ----- | 328 |
| - Total Nitrogen of SAR below Prado Dam (ppm) | 3.5 | ----- | 2.0 |
| 7. Month-End Water Storage Behind Prado Dam | 2 | ----- | 18,901 |
| 8. Month-End Water Storage in Recharge Facilities | 10,761 | ----- | 17,533 |
| 9. Water Storage Change in Recharge Facilities | (1,749) | (4,978) | 750 |
| 10. Total Artificial Recharge | 21,617 | 183,492 | 224,100 |
| 11. Monthly Mean Temperature at Santa Ana Fire Station (°F) | 65.1 | ----- | 64.7 |
| 12. Rainfall at FHQ (inches) | 0.01 | 5.74 | 13.83 |

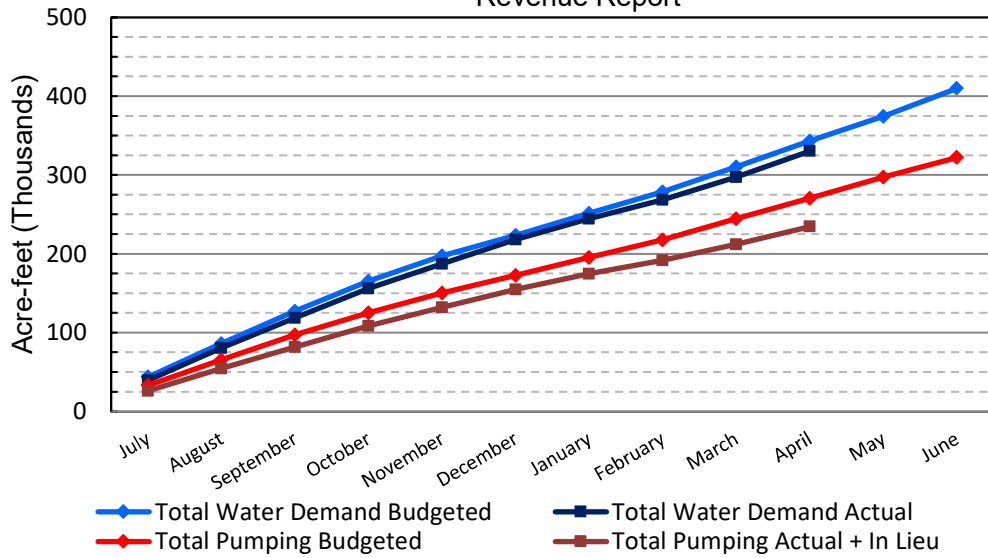
*** Note: Data are preliminary, subject to change

5/13/2021

Orange County Sanitation District Influent Flows Report

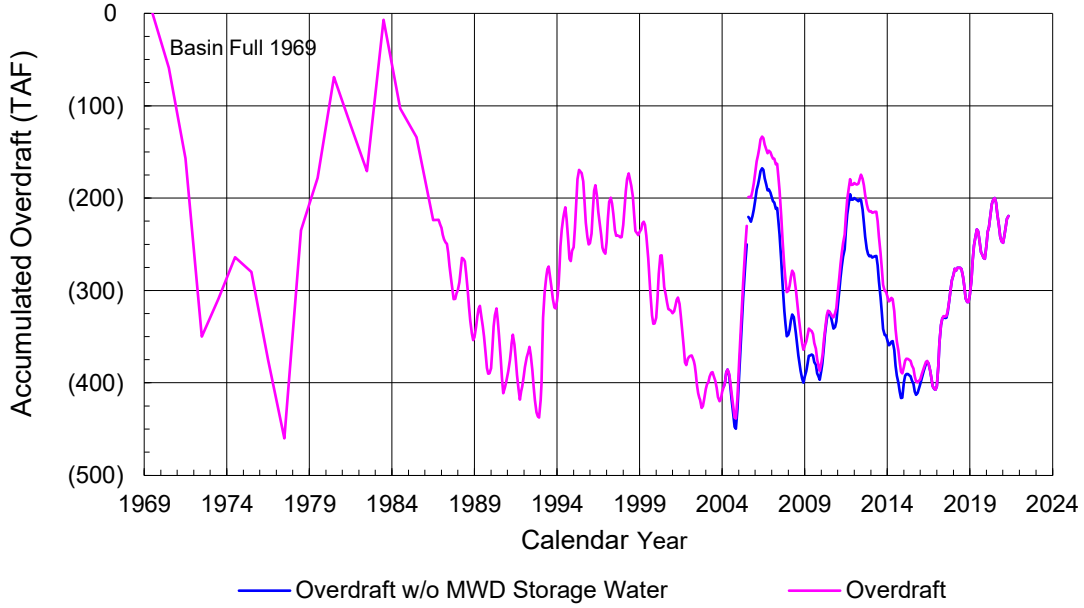


2019-20 Water Demands/Groundwater Pumping + In Lieu/RA Revenue Report

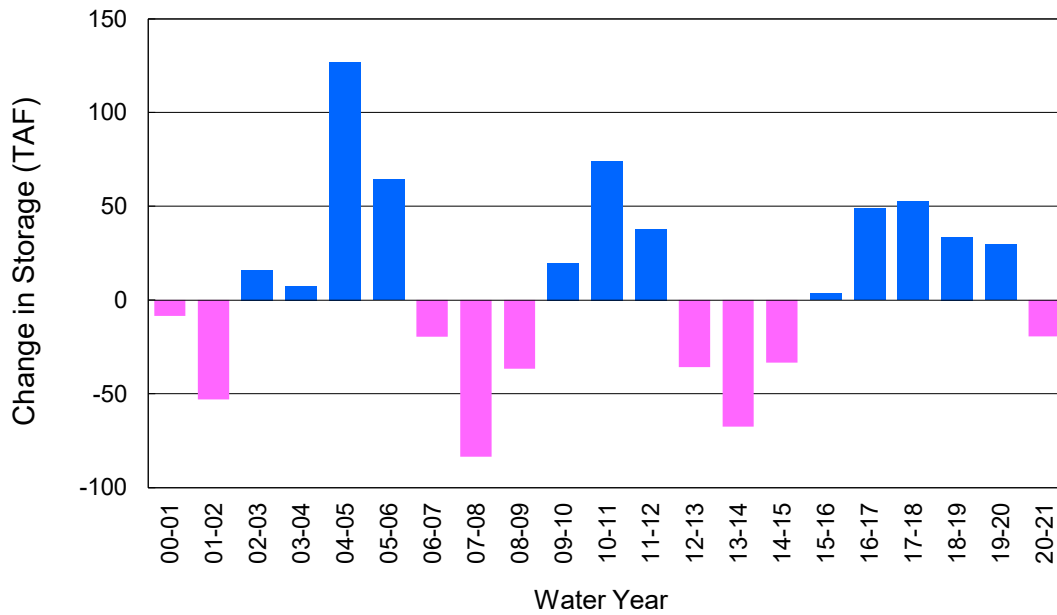


| | Monthly | | Accumulated Total for the Year | | | |
|-------------------------|--------------|--------------|--------------------------------|---------------|---------------|---------|
| | Budget | Actual | Budget | Actual | Difference | Percent |
| Total Water Demand | 32,600 | 33,214 | 343,000 | 330,381 | -12,619 | 96.32% |
| Total Pumping + In Lieu | 26,100 | 22,481 | 270,500 | 234,580 | -35,920 | 86.72% |
| RA Revenue | \$12,058,200 | \$10,386,082 | \$124,971,000 | \$108,376,005 | -\$16,594,995 | 86.72% |

Accumulated Overdraft



YTD Change in Groundwater Storage in OCWD



PRODUCERS WATER USAGE SUMMARY

April 2021

(AF except BPP)

| WATER AGENCY | Ground-water (1) | In Lieu | Reclaimed Water | Total Import (2) | Total Demand | 2020-21 YTD Demand | 2019-20 YTD Demand | YTD % Diff Demand | APR 2021 BPP | 2020-21 YTD BPP | 2019-20 YTD BPP |
|--|------------------|----------|-----------------|------------------|---------------|--------------------|--------------------|-------------------|--------------|-----------------|-----------------|
| Anaheim | 1,315 | 0 | 0 | 3,631 | 4,946 | 47,665 | 46,405 | 103% | 26.6% | 26.4% | 67.4% |
| Buena Park | 910 | 0 | 0 | 157 | 1,067 | 10,830 | 10,748 | 101% | 85.3% | 88.7% | 77.4% |
| East Orange County | 0 | 0 | 0 | 64 | 64 | 803 | 644 | 125% | 0.0% | 8.8% | 0.6% |
| Fountain Valley | 763 | 0 | 204 | 0 | 967 | 8,517 | 8,106 | 105% | 100.0% | 100.0% | 100.0% |
| Fullerton | 1,510 | 0 | 0 | 506 | 2,016 | 19,967 | 19,386 | 103% | 74.9% | 71.8% | 79.1% |
| Garden Grove | 1,635 | 0 | 0 | 281 | 1,916 | 18,957 | 17,959 | 106% | 85.3% | 76.1% | 52.7% |
| Golden State | 1,312 | 0 | 0 | 673 | 1,985 | 19,890 | 18,617 | 107% | 66.1% | 71.0% | 80.7% |
| West OC System | 1,231 | - | - | 2 | 1,233 | 11,991 | 11,183 | 107% | na | na | na |
| East OC System | 81 | - | - | 671 | 752 | 7,899 | 7,434 | 106% | na | na | na |
| Huntington Beach | 1,820 | 0 | 0 | 211 | 2,031 | 22,194 | 20,985 | 106% | 89.6% | 84.1% | 84.2% |
| Irvine Ranch | 4,062 | 0 | 1,239 | 42 | 5,343 | 51,500 | 50,281 | 102% | 99.0% | 99.5% | 99.8% |
| DRWF Clear | 2,274 | - | - | - | 2,274 | 23,318 | 17,924 | 130% | na | na | na |
| DRWF Color | 687 | - | - | - | 687 | 6,963 | 7,125 | 98% | na | na | na |
| Laguna Beach | 56 | 0 | 0 | 130 | 186 | 2,867 | 2,910 | na | 30.0% | 19.2% | 61.4% |
| La Palma | 155 | 0 | 0 | 0 | 155 | 1,637 | 1,597 | 103% | 99.8% | 100.0% | 100.0% |
| Mesa Water (MW) | 1,410 | 0 | 106 | 56 | 1,572 | 14,369 | 13,889 | 103% | 96.2% | 99.5% | 97.5% |
| MW Clear | 925 | - | - | - | 925 | 10,369 | 9,713 | 107% | na | na | na |
| MW Amber | 486 | - | - | - | 486 | 3,172 | 2,599 | 122% | na | na | na |
| Newport Beach | 1,308 | 0 | 73 | 2 | 1,383 | 12,712 | 11,903 | 107% | 99.8% | 96.4% | 63.0% |
| Orange | 1,771 | 0 | 0 | 507 | 2,278 | 22,928 | 22,034 | 104% | 77.7% | 80.5% | 80.3% |
| OCWD (GAP) | 132 | 0 | 0 | 0 | 132 | 1,346 | 1,242 | 108% | 100.0% | 100.0% | 100.0% |
| Santa Ana | 2,117 | 0 | 29 | 480 | 2,626 | 28,314 | 27,393 | 103% | 81.5% | 76.5% | 78.0% |
| Seal Beach | 273 | 0 | 0 | 0 | 273 | 2,811 | 2,646 | 106% | 99.8% | 69.2% | 66.4% |
| Serrano | 0 | 0 | 0 | 227 | 227 | 2,297 | 2,002 | 115% | 0.0% | 0.1% | 69.3% |
| Tustin | 477 | 0 | 0 | 437 | 914 | 9,225 | 8,475 | 109% | 52.2% | 87.2% | 96.4% |
| Westminster | 895 | 0 | 0 | 0 | 895 | 9,029 | 8,719 | 104% | 100.0% | 100.0% | 74.2% |
| Yorba Linda | <u>0</u> | <u>0</u> | <u>0</u> | <u>1,664</u> | <u>1,664</u> | <u>16,565</u> | <u>15,589</u> | <u>106%</u> | <u>0.0%</u> | <u>64.8%</u> | <u>64.6%</u> |
| SUBTOTAL: | 21,919 | 0 | 1,650 | 9,071 | 32,641 | 324,421 | 311,530 | 104% | 71.2% | 74.4% | 79.1% |
| Other Producers (Est ~3% of Subtotal) | <u>0</u> | <u>0</u> | <u>0</u> | <u>12</u> | <u>12</u> | <u>5,960</u> | <u>5,492</u> | <u>109%</u> | | | |
| TOTAL: | 21,919 | 0 | 1,650 | 9,083 | 32,652 | 330,381 | 317,022 | | 71.2% | 74.4% | 79.1% |
| OCWD (Talbert Barrier) | 0 | | 2,079 | 0 | 2,079 | 22,364 | 20,263 | | | | |
| OCSA (GAP) | na | | 55 | na | 55 | 943 | 1,049 | | | | |

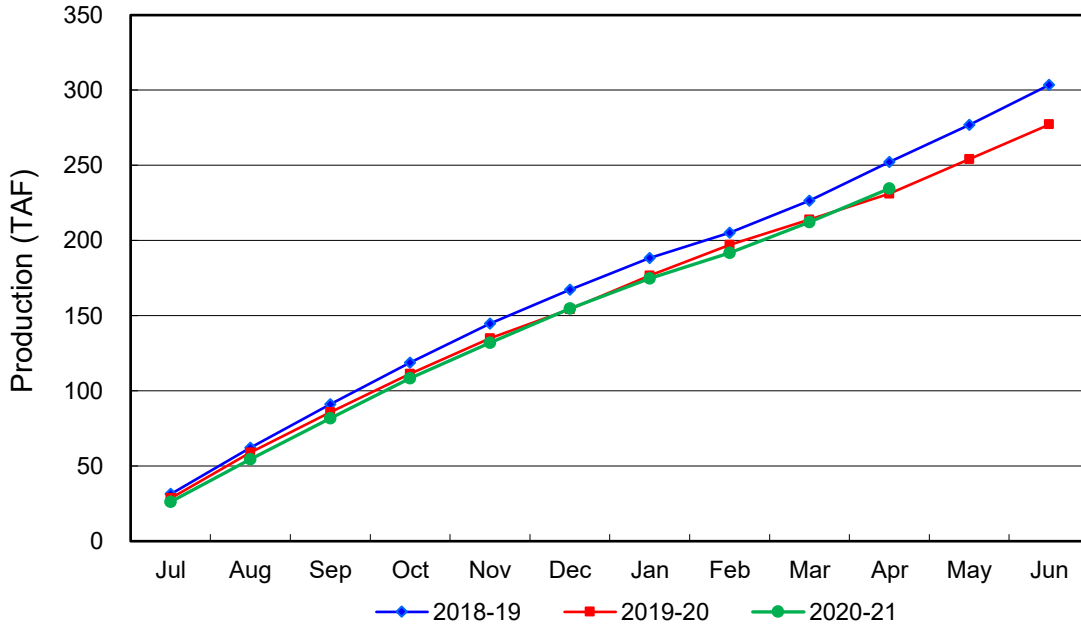
Estimated

(1) Excludes MWD CUP Withdrawals

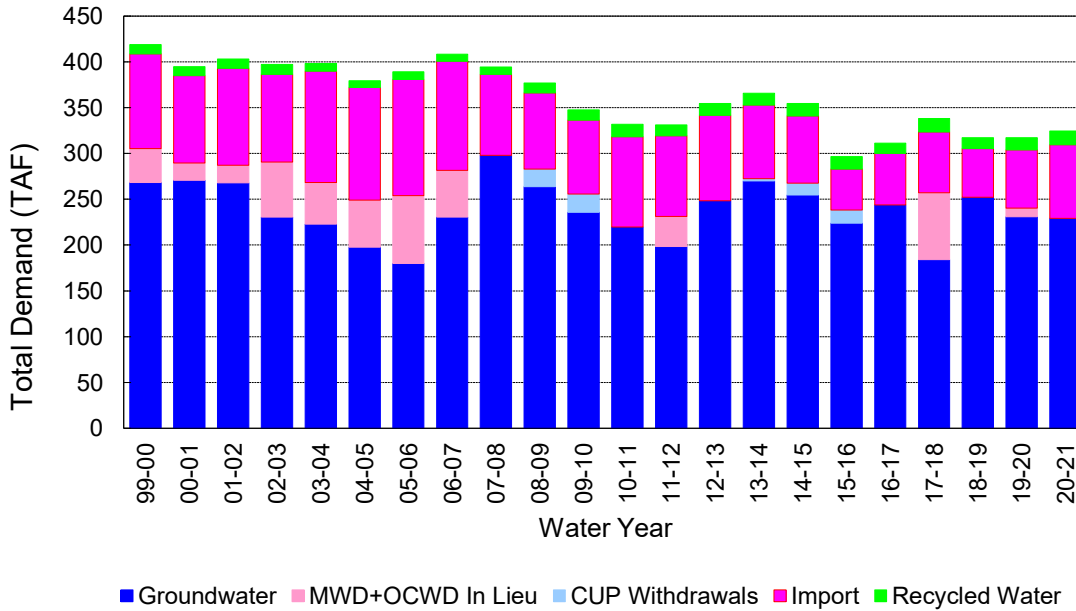
(2) Includes MWD CUP Withdrawals & In Lieu Water

5/13/2021 13:36

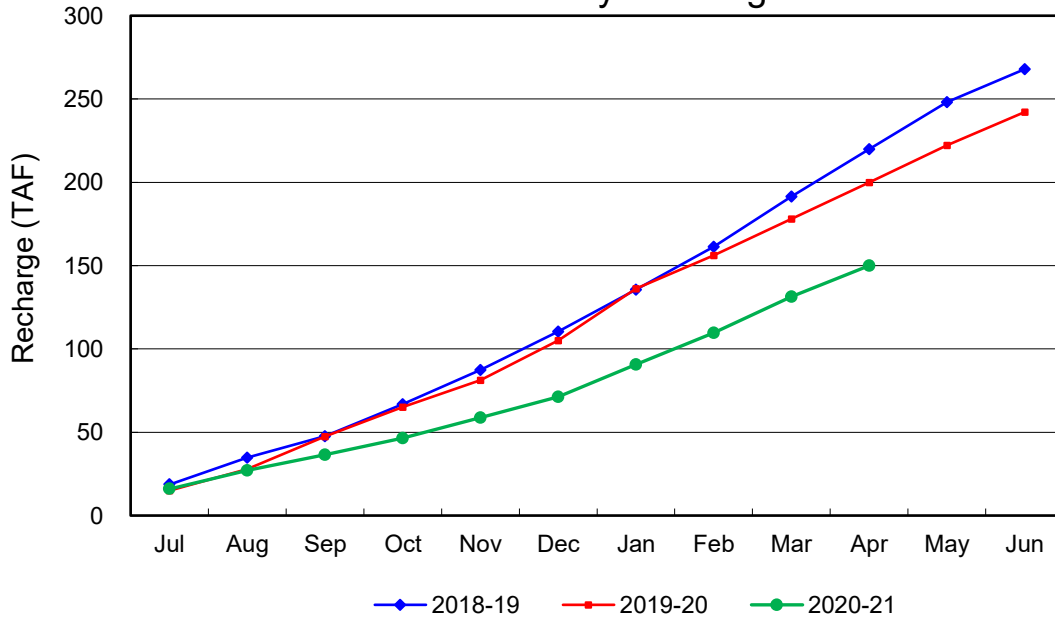
Annual Groundwater Production



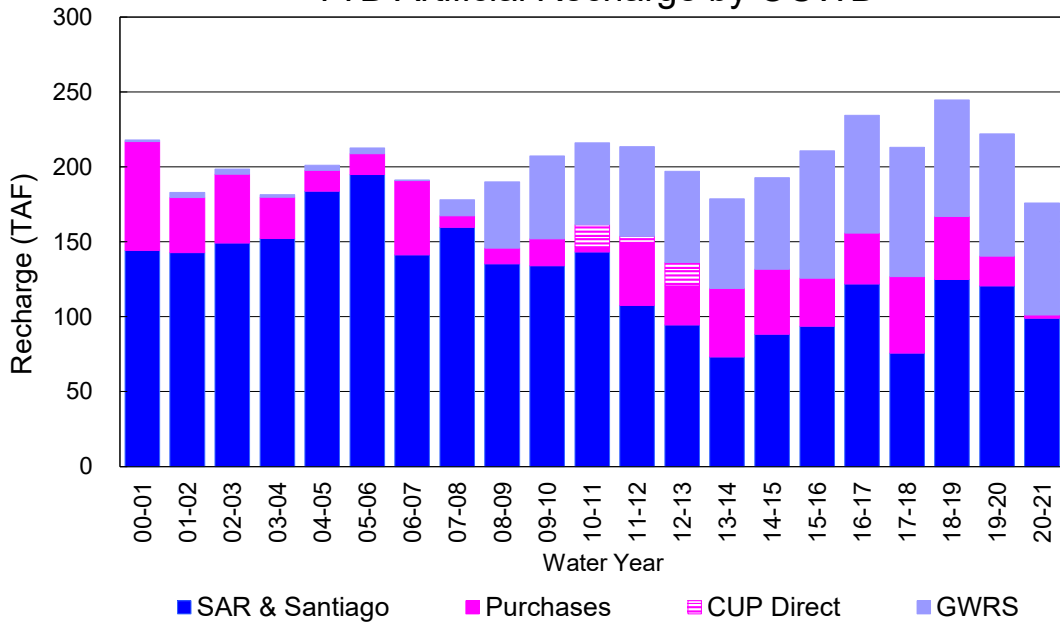
YTD Total Demand in OCWD



Annual Forebay Recharge



YTD Artificial Recharge by OCWD



RECHARGE AREAS REPORT

April 2021

| | Percolation (AF) | Remarks |
|---------------------|------------------|---|
| RIVER SYSTEM | 4,940 | 83 cfs per day average perc |
| DESILTING SYSTEM | na | |
| OFF-RIVER SYSTEM | 1,016 | SAR |
| WARNER SYSTEM | 621 | SAR |
| OLIVE BASIN | na | Passive System, 713 af of perc for the month. |
| ANAHEIM LAKE | 1,875 | SAR |
| MINI-ANA LAKE | 140 | SAR |
| MILLER BASIN | 965 | SAR |
| KRAEMER BASIN | 1,721 | SAR, Miller pumped water |
| LA PALMA BASIN | 2,731 | GWRS |
| MIRA LOMA | 2,652 | GWRS |
| LA JOLLA BASIN | 671 | SAR, Miller pumped water |
| PLACENTIA BASIN | na | |
| RAYMOND BASIN | 242 | SAR, Miller pumped water |
| FIVE COVES BASIN | na | |
| BURRIS BASIN | 958 | SAR |
| RIVER VIEW BASIN | na | |
| FLETCHER BASIN | na | cleaned |
| SANTIAGO BASINS | 79 | local nuisance |
| SANTIAGO CREEK | 0 | |
| TOTALS | 18,611 | |
| 5-YR AVERAGE | 22,718 | |

| FLOWS TO RECHARGE AREAS (AF) | |
|---|---------------|
| Imperial Headgates (estimated) | 11,754 |
| GWRS | 5,369 |
| OC-28 (MWD) | 0 |
| OC-28a (MWD) | 0 |
| OC-59 | 0 |
| | 0 |
| Est'd local Forebay inflow below Imperial | 30 |
| Est'd local Santiago inflow (estimated) | 0 |
| Irvine lake releases (OC-13 MWD) | 0 |
| Villa Park Dam releases (estimated) | 0 |
| Precip at Warner Basin (inches) | 0.01 |
| Precip direct to open water surfaces | 1 |
| TOTAL INFLOW | 17,153 |

| LOSSES FROM RECHARGE AREAS (AF) | |
|----------------------------------|------------|
| Est'd SAR flow past Chapman Ave. | 0 |
| Est'd Santiago Cr. flow to SAR | 0 |
| Est'd flows past Raymond Basin | 0 |
| | |
| Calc'd evap (inches) Estimated | 5 |
| Est'd evaporative losses | 292 |
| TOTAL LOSSES | 292 |

| STORAGE CHANGES (AF) | | | |
|----------------------|---------------|---------------|---------------|
| Facility | Begin | End | Net |
| Deep basins | 10,317 | 8,620 | -1,697 |
| Santiago Pits | 2,193 | 2,141 | -52 |
| River | | | |
| Off-river | | | |
| Irvine Lake | | | |
| TOTAL | 12,510 | 10,761 | -1,749 |

| SUMMARY (AF) | |
|--------------------|--------|
| TOTAL INFLOW | 17,153 |
| TOTAL LOSSES | 292 |
| STORAGE CHANGE | -1,749 |
| CALC'D PERCOLATION | 18,611 |

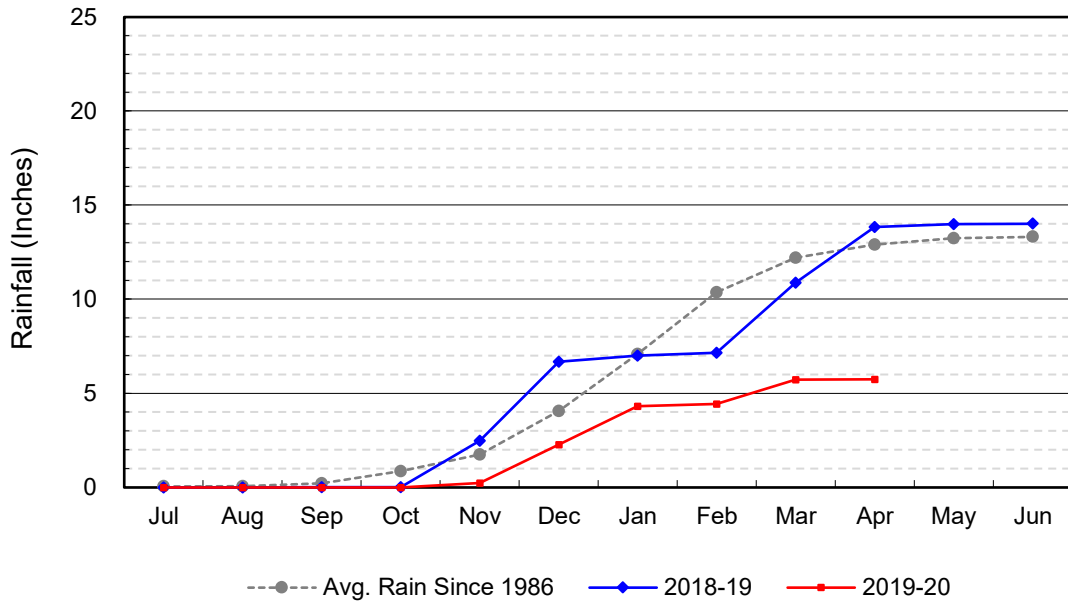
DEEP BASINS MONTHLY STATUS

April 2021

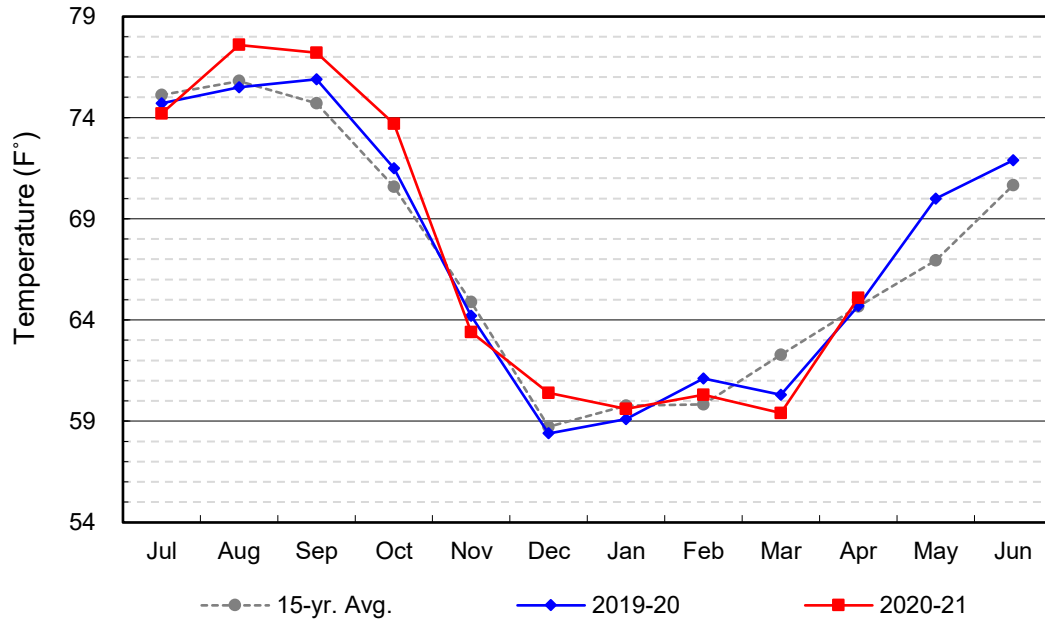
(values in acre-feet)

| <i>Facility</i> | <i>Storage Start</i> | <i>Storage End</i> | <i>Maximum Storage</i> | <i>Total Perc</i> | <i>Max Perc</i> | <i>Avg Perc</i> | <i>Avg W.S. Elev</i> |
|--------------------|--------------------------|------------------------|----------------------------|-----------------------|---------------------|---------------------|--------------------------|
| Desilting Ponds | 230 | 220 | 252 | na | na | na | na |
| Fos-Huckleberry | 570 | 522 | 628 | na | na | na | na |
| Conrock Basin | 605 | 549 | 661 | na | na | na | na |
| Warner Basins | 2,858 | 2,890 | 2,900 | 621 | na | 5 | 238 |
| Olive Pit | 50 | 29 | 95 | na | 36 | 24 | 211 |
| Anaheim Lake | 2,013 | 1,299 | 2,300 | 1,875 | 86 | 63 | 216 |
| Mini-Anaheim Lk | 7 | 1 | 10 | 140 | 10 | 5 | 223 |
| Miller Basin | 178 | 0 | 350 | 965 | 67 | 32 | 208 |
| Kraemer Basin | 797 | 185 | 1,055 | 1,721 | 94 | 57 | 204 |
| La Palma Basin | 89 | 64 | 101 | 2,731 | 120 | 91 | 217 |
| Mira Loma | 16 | 24 | 53 | 2,652 | 106 | 88 | 217 |
| La Jolla Basin | 7 | 5 | 20 | 671 | 39 | 22 | 201 |
| Placentia Basin | 0 | 0 | 200 | na | na | na | na |
| Raymond Basin | 75 | 100 | 200 | 242 | na | na | na |
| Five Coves Basins | 316 | 249 | 329 | na | na | na | na |
| Burriss Pit | 2,506 | 2,483 | 2,500 | 958 | 35 | 32 | 172 |
| River View Basin | 0 | 0 | 8 | na | na | na | na |
| Fletcher Basin | 0 | 0 | 15 | na | na | na | na |
| Santiago (Bond) | 1,313 | 1,275 | 8,312 | 79 | 9 | 3 | 188 |
| Santiago (Blu Dia) | 880 | 866 | 5,259 | - | - | - | - |
| Totals | 12,510 | 10,761 | 25,247 | 12,655 | | | |
| Prado Dam | 3,605 | 2 | 25,000 | | | | |

Cumulative Anaheim Field HQ Rainfall



Temperature at Santa Ana Fire Station



TALBERT BARRIER MONITORING WELL OCWD-M26

