

WATER RESOURCES SUMMARY

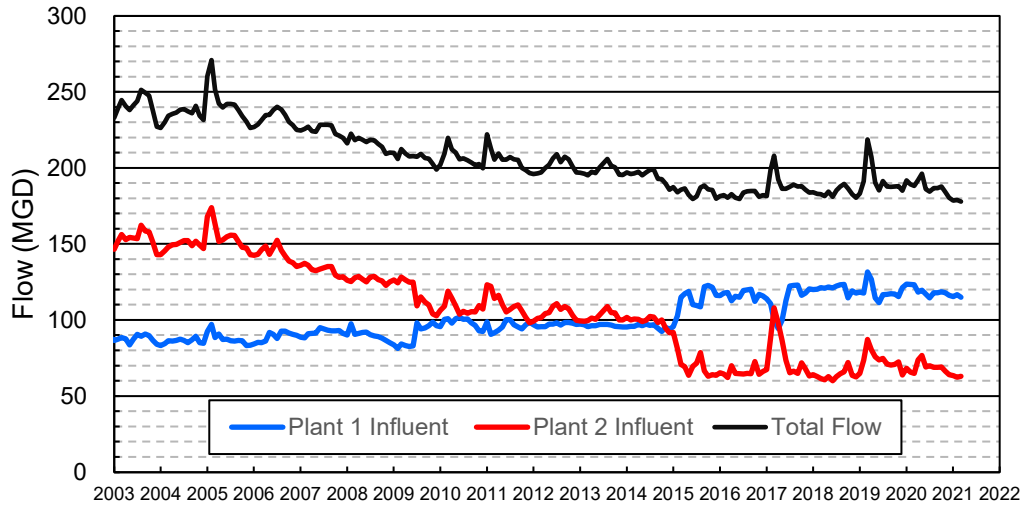
February 2021

INFLOWS & OUTFLOWS (acre-feet)	Total for Month	Year to Date - This Year Last Year	
BASIN SUPPLIES			
Water Purchases from MWD (excludes In Lieu)	0	0	18,098
Water into MWD Storage Account (excludes In Lieu)	0	0	0
SAR & Santiago Creek Flows (accounts for storage to/from recharge facilities)	13,977	72,944	92,043
GWRS Water to Forebay	5,196	39,998	50,009
GWRS Water to Mid-Basin Injection Wells	770	7,338	1,198
GWRS Water to Talbert Barrier	1,728	18,306	17,354
OC-44 Water to Talbert Barrier	0	14	0
Alamitos Barrier Water	240	1,984	1,451
Incidental Recharge (estimated)	4,500	22,700	25,800
Evaporation from Recharge Basins	(176)	(2,192)	(2,192)
River Flow Lost to Ocean	<u>0</u>	<u>(1,039)</u>	<u>(1,869)</u>
Total Groundwater Recharge	26,235	160,053	201,893
WATER PRODUCTION			
Groundwater Production	16,834	189,791	196,979
MWD Storage Program Withdrawals	<u>0</u>	<u>0</u>	<u>0</u>
Total Groundwater Production	16,834	189,791	196,979
BASIN BALANCE			
Change in Groundwater Storage	9,401	(29,738)	4,913
Change in Groundwater Storage excluding MWD Stored Water	9,401	(29,738)	4,913
Accumulated Overdraft	-----	229,738	231,085
Accumulated Overdraft excluding MWD Storage	-----	229,738	231,085
IN LIEU WATER			
OCWD In Lieu Purchases (MWD Cyclic Storage)	0	0	9,355
MWD In Lieu Storage	<u>0</u>	<u>0</u>	<u>0</u>
Total In Lieu	0	0	9,355
OTHER KEY INFORMATION			
1. MWD Water Deliveries to Producers	5,662	65,046	59,668
2. Basin Production Percentage	74.8%	74.5%	80.4%
3. Total Water Demand	23,803	266,679	268,380
4. Total GWRS Production	7,697	65,689	68,625
5. Green Acres Project Water	215	2,657	2,850
6. SAR Water Quality			
- Total Dissolved Solids (TDS) of SAR below Prado Dam (ppm)	579	-----	672
- Total Nitrogen of SAR below Prado Dam (ppm)	2.4	-----	5.7
7. Month-End Water Storage Behind Prado Dam	5,737	-----	4
8. Month-End Water Storage in Recharge Facilities	12,387	-----	17,902
9. Water Storage Change in Recharge Facilities	783	(3,352)	1,119
10. Total Artificial Recharge	21,735	137,353	176,094
11. Monthly Mean Temperature at Santa Ana Fire Station (°F)	60.3	-----	61.1
12. Rainfall at FHQ (inches)	0.12	4.43	7.15

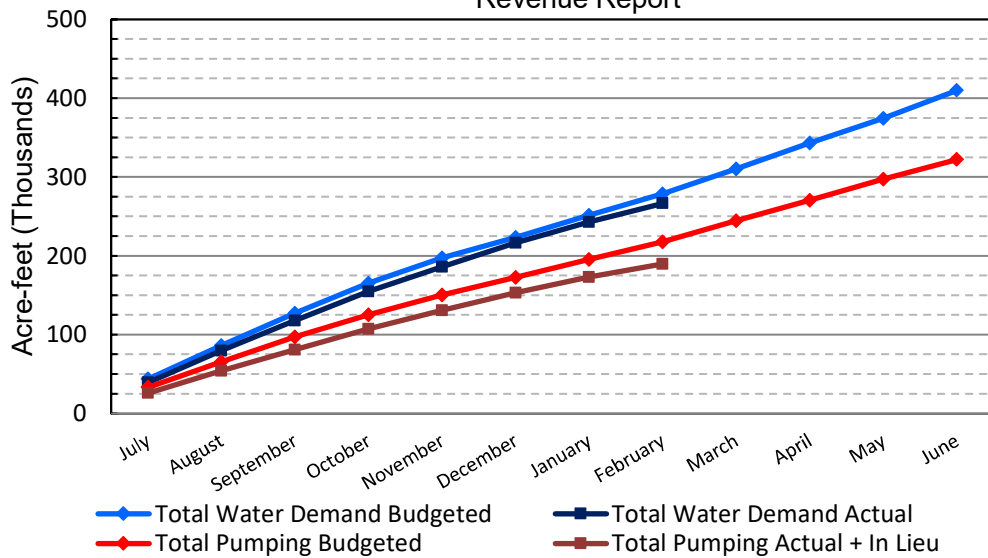
*** Note: Data are preliminary, subject to change

3/11/2021

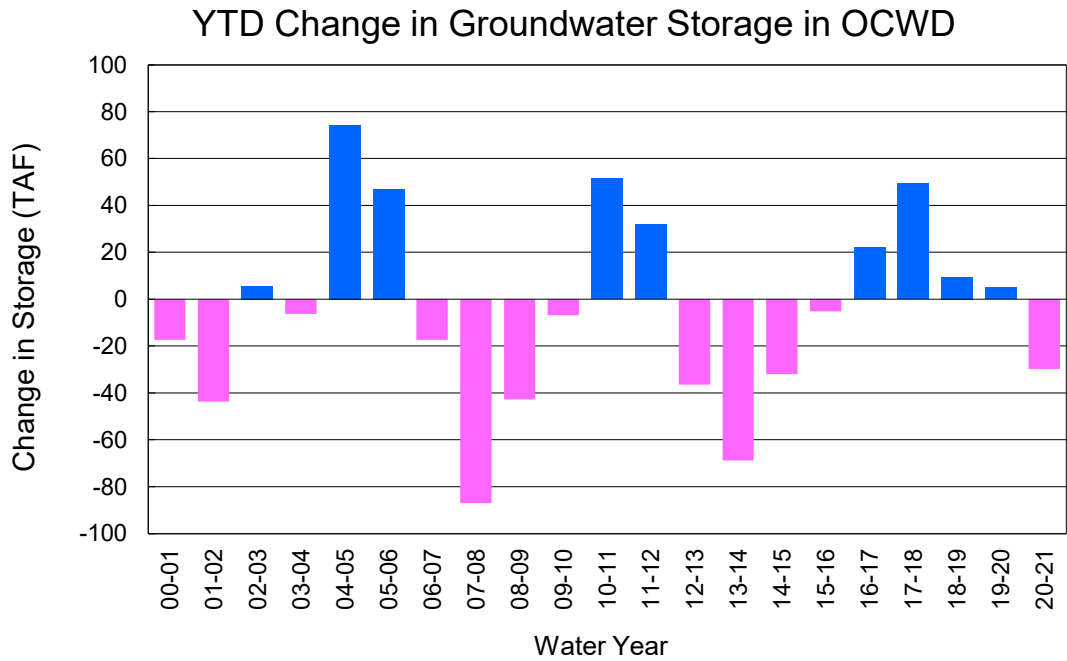
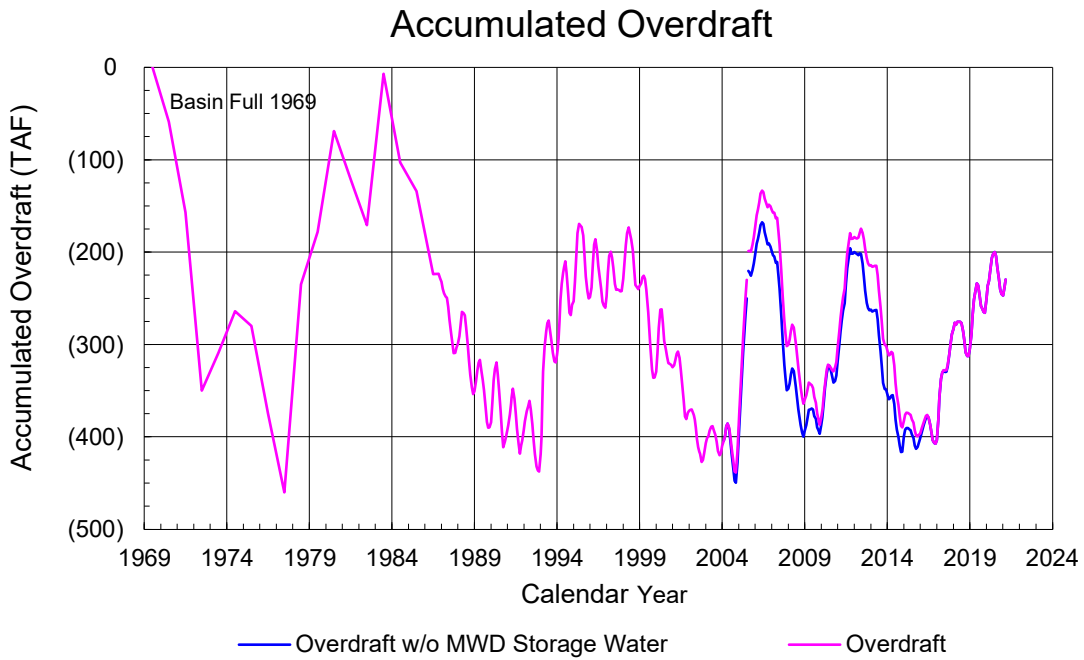
Orange County Sanitation District Influent Flows Report



2019-20 Water Demands/Groundwater Pumping + In Lieu/RA Revenue Report



	Monthly		Accumulated Total for the Year			
	Budget	Actual	Budget	Actual	Difference	Percent
Total Water Demand	26,900	23,803	278,400	266,679	-11,721	95.79%
Total Pumping + In Lieu	22,500	16,834	217,900	189,791	-28,109	87.10%
RA Revenue	\$10,395,000	\$7,777,235	\$100,669,800	\$87,683,403	-\$12,986,397	87.10%



PRODUCERS WATER USAGE SUMMARY

February 2021

(AF except BPP)

WATER AGENCY	Ground-water (1)	In Lieu	Reclaimed Water	Total Import (2)	Total Demand	2020-21 YTD Demand	2019-20 YTD Demand	YTD % Diff Demand	FEB 2021 BPP	2020-21 YTD BPP	2019-20 YTD BPP
Anaheim	905	0	0	2,315	3,220	38,770	40,775	95%	28.1%	26.3%	72.3%
Buena Park	775	0	0	15	790	8,793	9,054	97%	98.1%	88.1%	73.2%
East Orange County	0	0	0	50	50	695	554	126%	0.0%	10.1%	0.7%
Fountain Valley	565	0	68	0	632	6,798	6,838	99%	100.0%	100.0%	100.0%
Fullerton	933	0	0	508	1,441	16,289	16,527	99%	64.7%	72.4%	79.9%
Garden Grove	1,317	0	0	141	1,458	15,364	14,980	103%	90.3%	72.8%	56.3%
Golden State	1,078	0	0	373	1,451	16,230	15,586	104%	74.3%	71.8%	80.1%
West OC System	900	-	-	2	902	9,701	9,281	105%	na	na	na
East OC System	178	-	-	372	549	6,529	6,304	104%	na	na	na
Huntington Beach	1,628	0	0	58	1,686	18,495	17,691	105%	96.5%	82.7%	83.5%
Irvine Ranch	2,428	0	1,153	33	3,614	41,091	42,076	98%	98.7%	99.5%	99.8%
DRWF Clear	1,248	-	-	-	1,248	19,013	13,943	136%	na	na	na
DRWF Color	656	-	-	-	656	5,565	5,683	98%	na	na	na
Laguna Beach	100	0	0	120	220	2,409	2,446	na	45.4%	15.1%	64.2%
La Palma	125	0	0	0	125	1,350	1,321	102%	100.0%	100.0%	100.0%
Mesa Water (MW)	1,020	0	29	0	1,049	11,543	11,594	100%	100.0%	100.0%	97.1%
MW Clear	956	-	-	-	956	8,561	8,126	105%	na	na	na
MW Amber	64	-	-	-	64	2,385	1,994	120%	na	na	na
Newport Beach	882	0	20	0	903	10,246	9,952	103%	100.0%	95.6%	56.5%
Orange	1,577	0	0	120	1,697	18,751	18,748	100%	93.0%	79.3%	80.0%
OCWD (GAP)	112	0	0	0	112	1,087	999	109%	100.0%	100.0%	100.0%
Santa Ana	1,736	0	37	468	2,240	23,056	22,685	102%	78.8%	75.4%	80.6%
Seal Beach	199	0	0	0	199	2,302	2,211	104%	99.8%	62.4%	60.0%
Serrano	0	0	0	144	144	1,893	1,733	109%	0.0%	0.0%	80.1%
Tustin	433	0	0	266	699	7,552	7,126	106%	61.9%	93.6%	95.8%
Westminster	729	0	0	0	729	7,324	7,216	101%	100.0%	100.0%	77.9%
Yorba Linda	<u>34</u>	<u>0</u>	<u>0</u>	<u>1,043</u>	<u>1,077</u>	<u>13,639</u>	<u>13,318</u>	<u>102%</u>	<u>3.2%</u>	<u>78.7%</u>	<u>74.6%</u>
SUBTOTAL:	16,575	0	1,307	5,655	23,537	263,678	263,428	100%	74.8%	74.5%	80.4%
Other Producers (Est ~3% of Subtotal)	<u>0</u>	<u>0</u>	<u>0</u>	<u>0</u>	<u>0</u>	<u>3,001</u>	<u>4,952</u>	<u>61%</u>			
TOTAL:	16,575	0	1,307	5,662	23,544	266,679	268,380		74.8%	74.5%	80.4%
OCWD (Talbert Barrier)	0		1,728	0	1,728	18,321	17,355				
OCSA (GAP)	na		61	na	61	833	795				

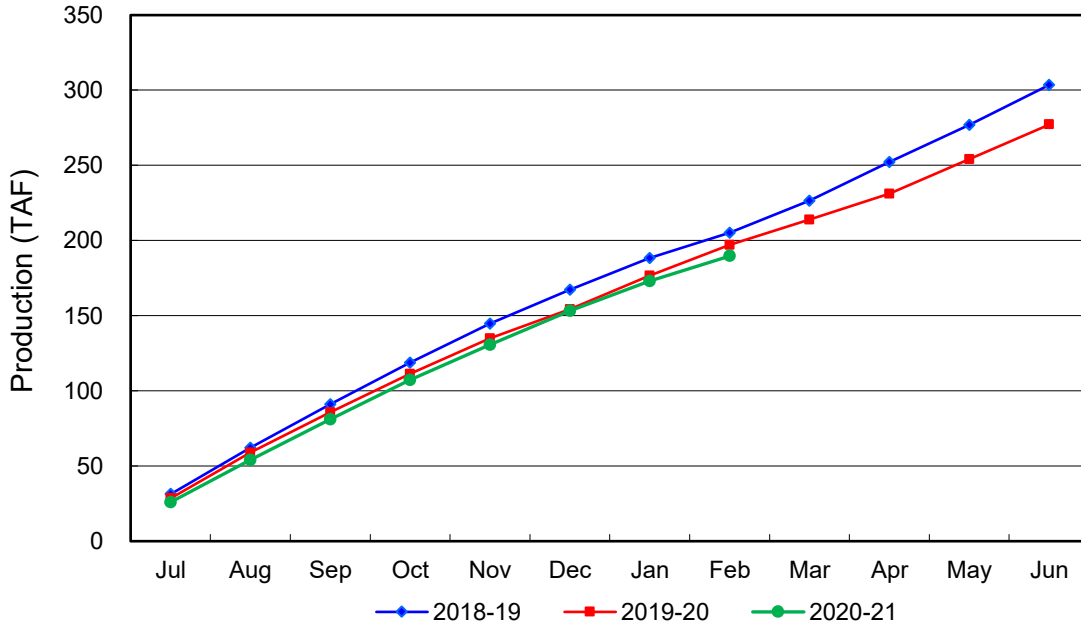
Estimated

(1) Excludes MWD CUP Withdrawals

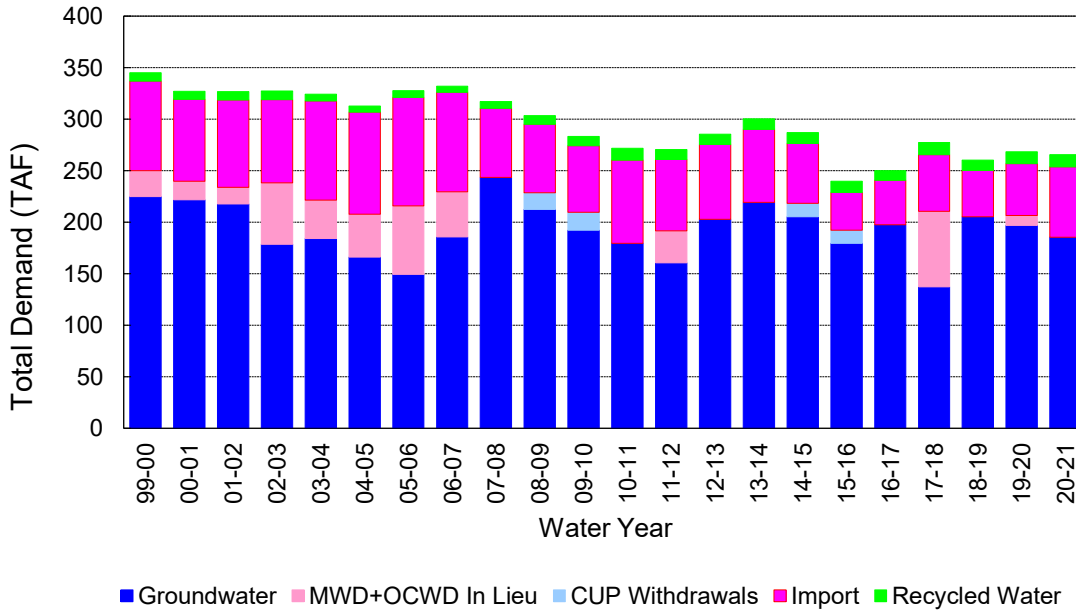
(2) Includes MWD CUP Withdrawals & In Lieu Water

3/11/2021 16:10

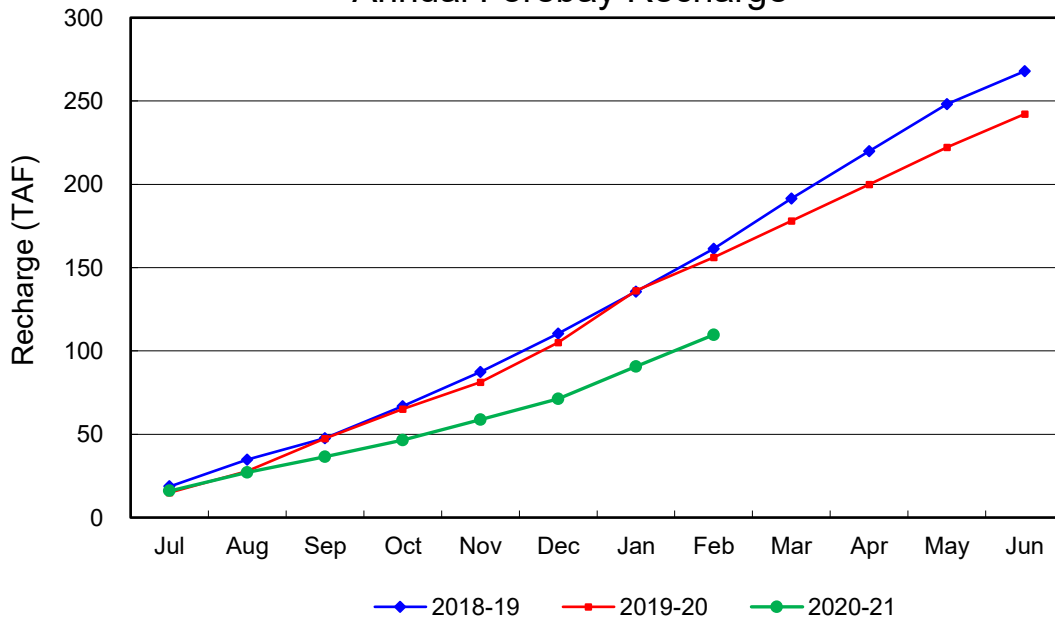
Annual Groundwater Production



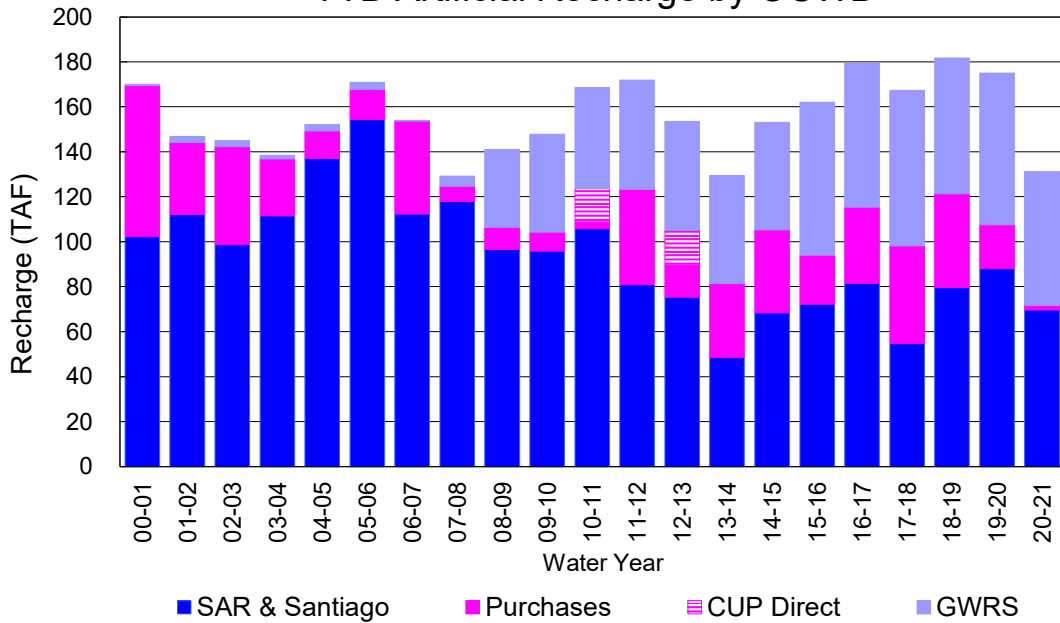
YTD Total Demand in OCWD



Annual Forebay Recharge



YTD Artificial Recharge by OCWD



RECHARGE AREAS REPORT

February 2021

	Percolation (AF)	Remarks
RIVER SYSTEM	4,224	76 cfs per day average
DESILTING SYSTEM	na	SAR
OFF-RIVER SYSTEM	1,023	SAR
WARNER SYSTEM	1,018	SAR
OLIVE BASIN	na	Passive System
ANAHEIM LAKE	2,438	SAR
MINI-ANA LAKE	244	SAR
MILLER BASIN	1,264	SAR
KRAEMER BASIN	1,837	SAR
LA PALMA BASIN	4,356	GWRS
MIRA LOMA	831	GWRS
LA JOLLA BASIN	476	SAR
PLACENTIA BASIN	na	
RAYMOND BASIN	115	SAR
FIVE COVES BASIN	na	SAR
BURRIS BASIN	822	SAR
RIVER VIEW BASIN	71	Santiago pumping
FLETCHER BASIN	11	Runoff
SANTIAGO BASINS	151	Runoff
SANTIAGO CREEK	119	Santiago pumping
TOTALS	19,000	
5-YR AVERAGE	21,525	

FLOWS TO RECHARGE AREAS (AF)	
Imperial Headgates (estimated)	14,553
GWRS	5,198
OC-28 (MWD)	0
OC-28a (MWD)	0
OC-59	0
Est'd local Forebay inflow below Imperial	152
Est'd local Santiago inflow (estimated)	48
Irvine lake releases (OC-13 MWD)	0
Villa Park Dam releases (estimated)	0
Precip at Warner Basin (inches)	0.12
Precip direct to open water surfaces	7
TOTAL INFLOW	19,958

LOSSES FROM RECHARGE AREAS (AF)	
Est'd SAR flow past Chapman Ave.	0
Est'd Santiago Cr. flow to SAR	0
Est'd flows past Raymond Basin	0
Calc'd evap (inches) Estimated	3.01
Est'd evaporative losses	176
TOTAL LOSSES	176

STORAGE CHANGES (AF)			
Facility	Begin	End	Net
Deep basins	8,262	9,331	1,069
Santiago Pits	3,342	3,056	-286
River			0
Off-river			0
Irvine Lake			
TOTAL	11,604	12,387	783

SUMMARY (AF)	
TOTAL INFLOW	19,958
TOTAL LOSSES	176
STORAGE CHANGE	783
CALC'D PERCOLATION	19,000

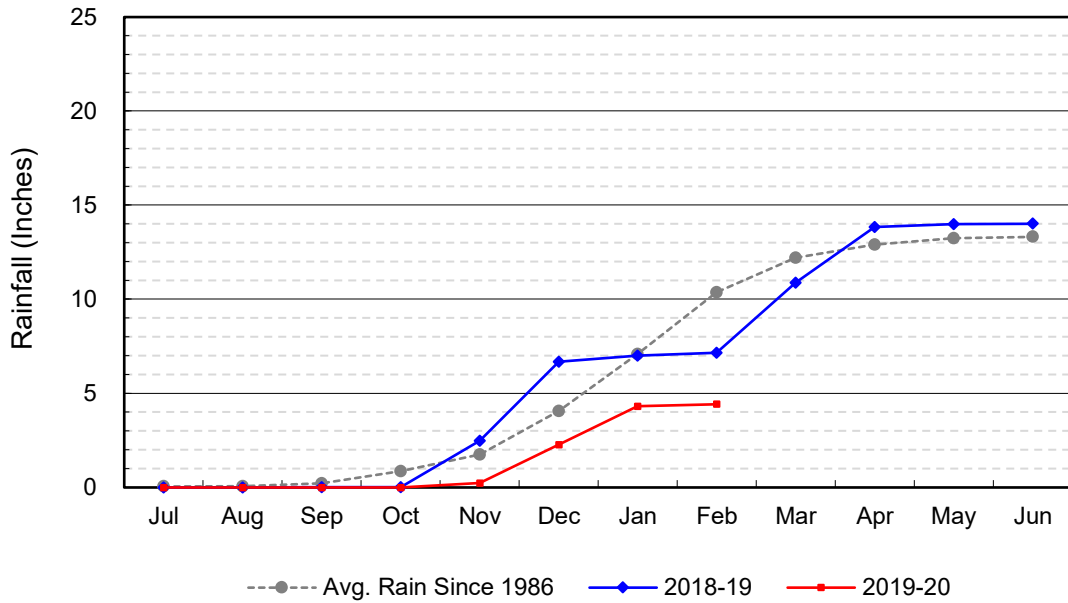
DEEP BASINS MONTHLY STATUS

February 2021

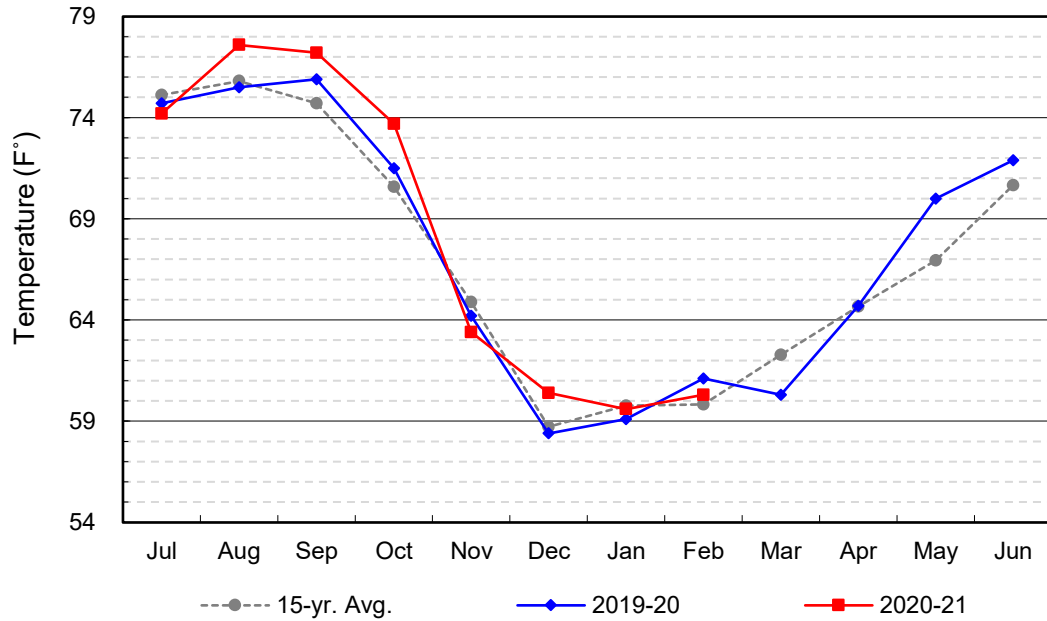
(values in acre-feet)

<i>Facility</i>	<i>Storage Start</i>	<i>Storage End</i>	<i>Maximum Storage</i>	<i>Total Perc</i>	<i>Max Perc</i>	<i>Avg Perc</i>	<i>Avg W.S. Elev</i>
Desilting Ponds	230	230	230	na	na	na	na
Fos-Huckleberry	553	564	630	na	na	na	na
Conrock Basin	582	598	660	na	na	na	na
Warner Basins	2,802	2,852	2,810	1,018	na	na	238
Olive Pit	25	32	183	na	30	27	205
Anaheim Lake	911	1,671	2,300	2,438	104	87	210
Mini-Anaheim Lk	6	8	21	244	10	9	224
Miller Basin	12	83	340	1,264	61	45	207
Kraemer Basin	339	392	1,050	1,837	82	66	189
La Palma Basin	77	85	105	4,356	167	156	218
Mira Loma	4	5	62	831	36	30	214
La Jolla Basin	7	18	36	476	20	17	203
Placentia Basin	0	0	350	na	na	na	na
Raymond Basin	0	75	370	115	na	na	na
Five Coves Basins	280	214	350	na	na	na	na
Burriss Pit	2,423	2,501	2,670	822	33	29	172
River View Basin	0	3	12	71	20	3	187
Fletcher Basin	11	0	15	11	2	0	185
Santiago (Bond)	2,441	2,175	8,690	151	12	5	208
Santiago (Blu Dia)	901	881	5,240	-	-	-	-
Totals	11,604	12,387	26,124	13,634			
Prado Dam	9,926	5,737	25,000				

Cumulative Anaheim Field HQ Rainfall



Temperature at Santa Ana Fire Station



TALBERT BARRIER MONITORING WELL OCWD-M26

