

WATER RESOURCES SUMMARY

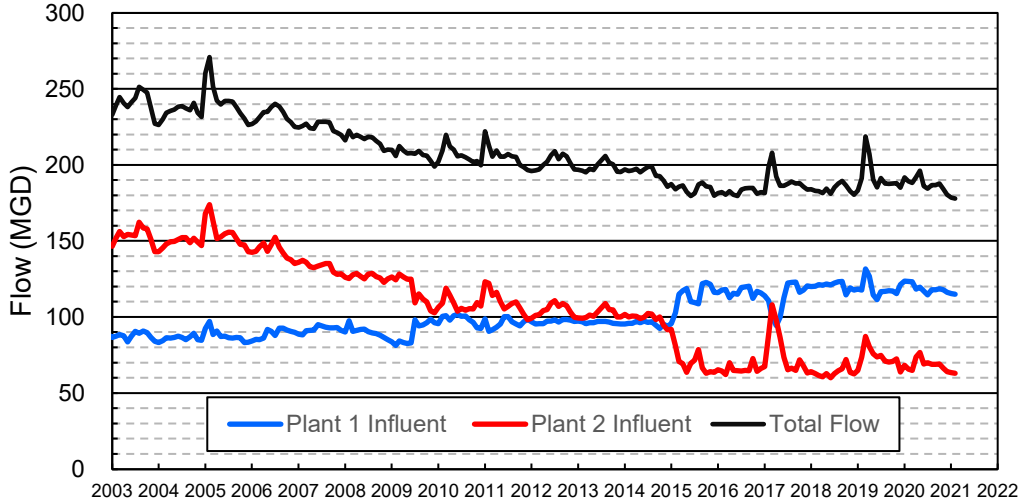
January 2021

INFLOWS & OUTFLOWS (acre-feet)	Total for Month	Year to Date - This Year Last Year	
BASIN SUPPLIES			
Water Purchases from MWD (excludes In Lieu)	0	0	18,098
Water into MWD Storage Account (excludes In Lieu)	0	0	0
SAR & Santiago Creek Flows (accounts for storage to/from recharge facilities)	14,655	58,967	78,159
GWRS Water to Forebay	5,343	34,801	43,684
GWRS Water to Mid-Basin Injection Wells	858	6,568	1,050
GWRS Water to Talbert Barrier	2,057	16,578	15,871
OC-44 Water to Talbert Barrier	0	14	0
Alamitos Barrier Water	250	1,737	1,275
Incidental Recharge (estimated)	5,000	18,200	22,100
Evaporation from Recharge Basins	(167)	(2,016)	(2,016)
River Flow Lost to Ocean	<u>(418)</u>	<u>(1,039)</u>	<u>(1,869)</u>
Total Groundwater Recharge	27,577	133,811	176,352
WATER PRODUCTION			
Groundwater Production	19,930	173,140	176,651
MWD Storage Program Withdrawals	<u>0</u>	<u>0</u>	<u>0</u>
Total Groundwater Production	19,930	173,140	176,651
BASIN BALANCE			
Change in Groundwater Storage	7,648	(39,329)	(299)
Change in Groundwater Storage excluding MWD Stored Water	7,648	(39,329)	(299)
Accumulated Overdraft	-----	239,329	236,299
Accumulated Overdraft excluding MWD Storage	-----	239,329	236,299
IN LIEU WATER			
OCWD In Lieu Purchases (MWD Cyclic Storage)	0	0	9,355
MWD In Lieu Storage	<u>0</u>	<u>0</u>	<u>0</u>
Total In Lieu	0	0	9,355
OTHER KEY INFORMATION			
1. MWD Water Deliveries to Producers	5,165	59,769	53,735
2. Basin Production Percentage	79.4%	74.3%	80.7%
3. Total Water Demand	26,546	243,540	240,853
4. Total GWRS Production	8,260	57,992	60,658
5. Green Acres Project Water	280	2,576	2,642
6. SAR Water Quality			
- Total Dissolved Solids (TDS) of SAR below Prado Dam (ppm)	686	-----	412
- Total Nitrogen of SAR below Prado Dam (ppm)	3.9	-----	1.9
7. Month-End Water Storage Behind Prado Dam	9,926	-----	15
8. Month-End Water Storage in Recharge Facilities	11,604	-----	22,078
9. Water Storage Change in Recharge Facilities	1,341	(4,135)	5,295
10. Total Artificial Recharge	22,577	115,611	154,252
11. Monthly Mean Temperature at Santa Ana Fire Station (°F)	59.6	-----	59.1
12. Rainfall at FHQ (inches)	2.04	4.31	7.00

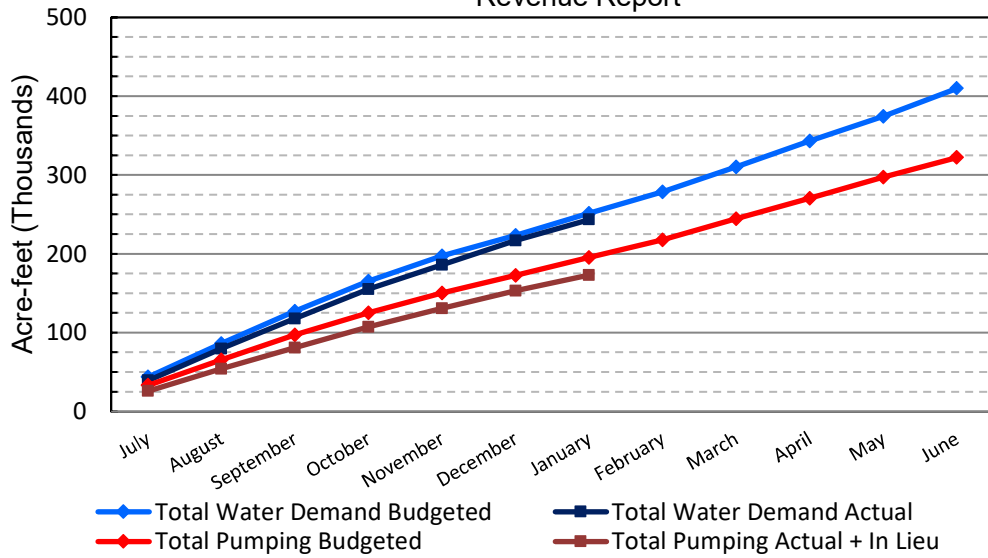
*** Note: Data are preliminary, subject to change

2/11/2021

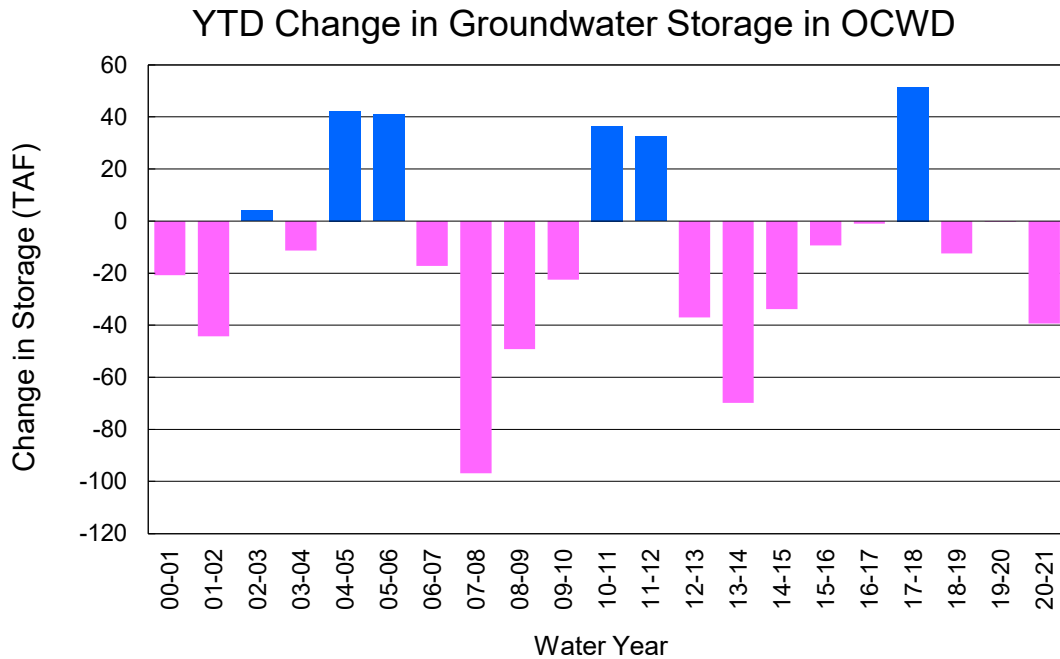
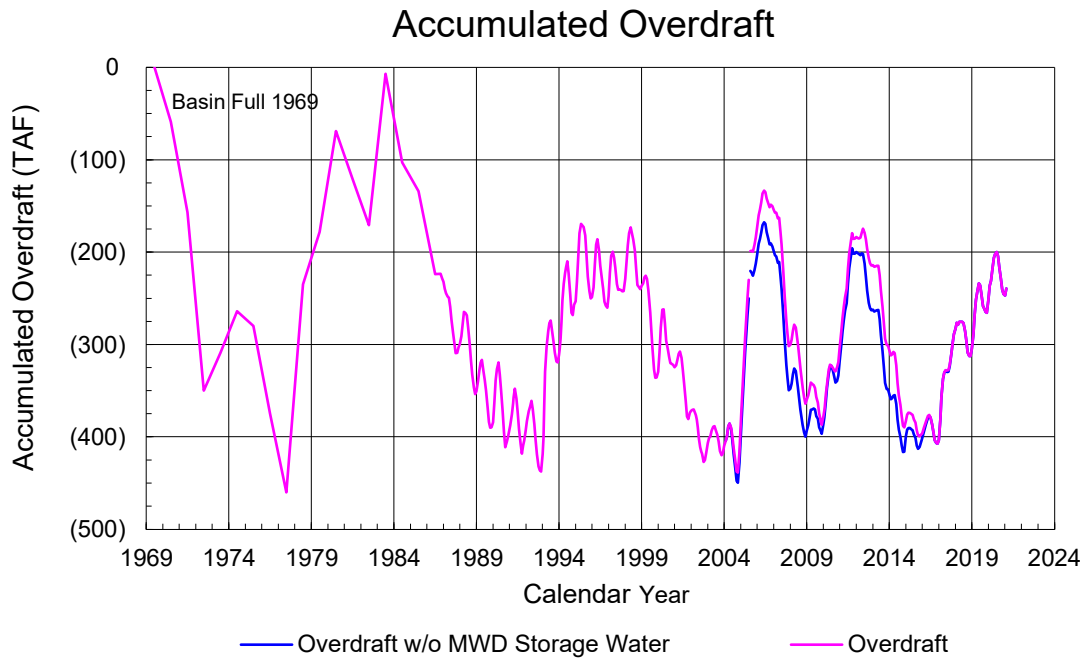
Orange County Sanitation District Influent Flows Report



2019-20 Water Demands/Groundwater Pumping + In Lieu/RA Revenue Report



	Monthly		Accumulated Total for the Year			
	Budget	Actual	Budget	Actual	Difference	Percent
Total Water Demand	28,000	26,545	251,500	243,539	-7,961	96.83%
Total Pumping + In Lieu	22,800	19,930	195,400	173,140	-22,260	88.61%
RA Revenue	\$10,533,600	\$9,207,506	\$90,274,800	\$79,990,629	-\$10,284,171	88.61%



PRODUCERS WATER USAGE SUMMARY

January 2021

(AF except BPP)

WATER AGENCY	Ground-water (1)	In Lieu	Reclaimed Water	Total Import (2)	Total Demand	2020-21 YTD Demand	2019-20 YTD Demand	YTD % Diff Demand	JAN 2021 BPP	2020-21 YTD BPP	2019-20 YTD BPP
Anaheim	932	0	0	2,593	3,526	35,550	36,816	97%	26.4%	26.1%	73.3%
Buena Park	753	0	0	116	869	8,003	8,112	99%	86.6%	87.1%	70.1%
East Orange County	14	0	0	62	76	646	498	130%	18.6%	10.9%	0.8%
Fountain Valley	627	0	88	0	714	6,219	6,203	100%	100.0%	100.0%	100.0%
Fullerton	1,106	0	0	433	1,539	14,847	14,885	100%	71.9%	73.2%	80.7%
Garden Grove	1,365	0	0	248	1,613	13,906	13,435	104%	84.6%	70.9%	57.6%
Golden State	1,195	0	0	417	1,612	14,779	13,983	106%	74.1%	71.6%	80.1%
West OC System	995	-	-	2	997	8,799	8,317	106%	na	na	na
East OC System	200	-	-	415	615	5,980	5,666	106%	na	na	na
Huntington Beach	1,714	0	0	99	1,813	16,809	15,987	105%	94.6%	81.3%	83.2%
Irvine Ranch	2,848	0	1,277	42	4,167	37,477	37,567	100%	98.5%	99.6%	99.8%
DRWF Clear	1,399	-	-	-	1,399	17,765	11,829	150%	na	na	na
DRWF Color	725	-	-	-	725	4,909	5,010	98%	na	na	na
Laguna Beach	121	0	0	150	271	2,213	2,173	na	44.7%	12.0%	64.9%
La Palma	136	0	0	0	136	1,225	1,186	103%	100.0%	100.0%	100.0%
Mesa Water (MW)	1,119	0	49	0	1,168	10,516	10,371	101%	100.0%	100.0%	96.7%
MW Clear	1,065	-	-	-	1,065	7,604	7,174	106%	na	na	na
MW Amber	55	-	-	-	55	2,321	1,755	132%	na	na	na
Newport Beach	925	0	19	21	966	9,350	8,851	106%	97.8%	95.2%	63.7%
Orange	1,900	0	0	120	2,020	17,263	16,926	102%	94.1%	78.1%	78.7%
OCWD (GAP)	115	0	0	0	115	975	873	112%	100.0%	100.0%	100.0%
Santa Ana	1,902	0	15	543	2,460	20,819	20,242	103%	77.8%	75.1%	78.2%
Seal Beach	215	0	0	1	216	2,103	1,994	105%	99.4%	58.9%	55.6%
Serrano	0	0	0	165	165	1,749	1,567	112%	0.0%	0.0%	85.3%
Tustin	746	0	0	2	748	6,853	6,405	107%	99.7%	96.8%	95.4%
Westminster	793	0	0	0	793	6,596	6,443	102%	100.0%	100.0%	75.7%
Yorba Linda	<u>1,097</u>	<u>0</u>	<u>0</u>	<u>146</u>	<u>1,243</u>	<u>12,903</u>	<u>11,704</u>	<u>110%</u>	<u>88.2%</u>	<u>83.0%</u>	<u>79.9%</u>
SUBTOTAL:	19,623	0	1,448	5,158	26,229	240,801	236,222	102%	79.4%	74.3%	80.7%
Other Producers (Est ~3% of Subtotal)	<u>0</u>	<u>0</u>	<u>0</u>	<u>7</u>	<u>7</u>	<u>2,739</u>	<u>4,632</u>	<u>59%</u>			
TOTAL:	19,623	0	1,448	5,165	26,236	243,540	240,853		79.4%	74.3%	80.7%
OCWD (Talbert Barrier)	0		2,057	0	2,057	16,593	15,871				
OCSD (GAP)	na		105	na	105	810	677				

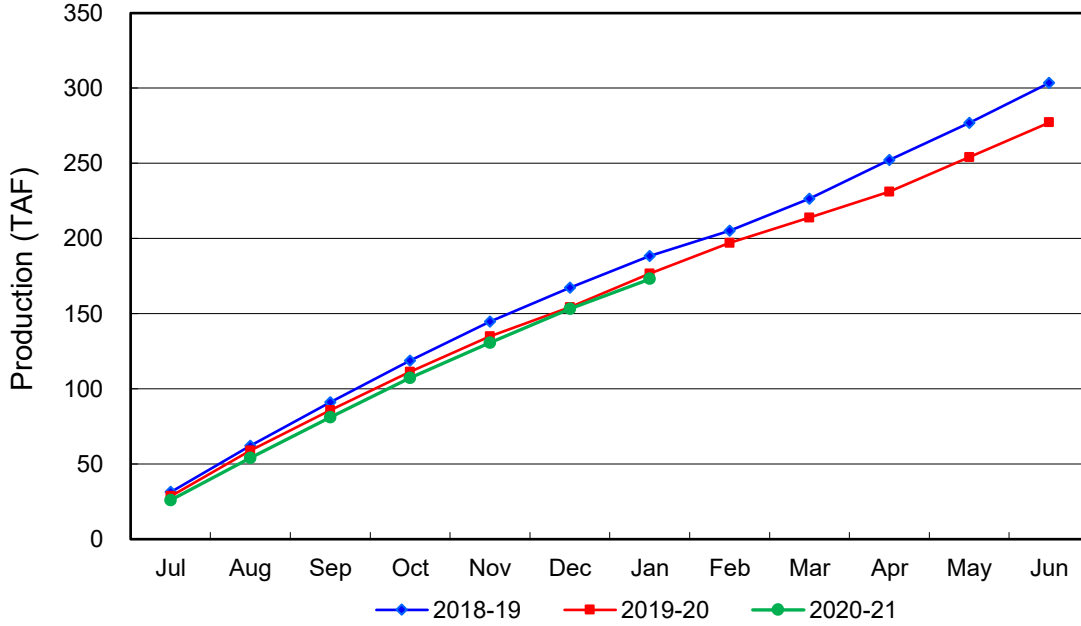
Estimated

(1) Excludes MWD CUP Withdrawals

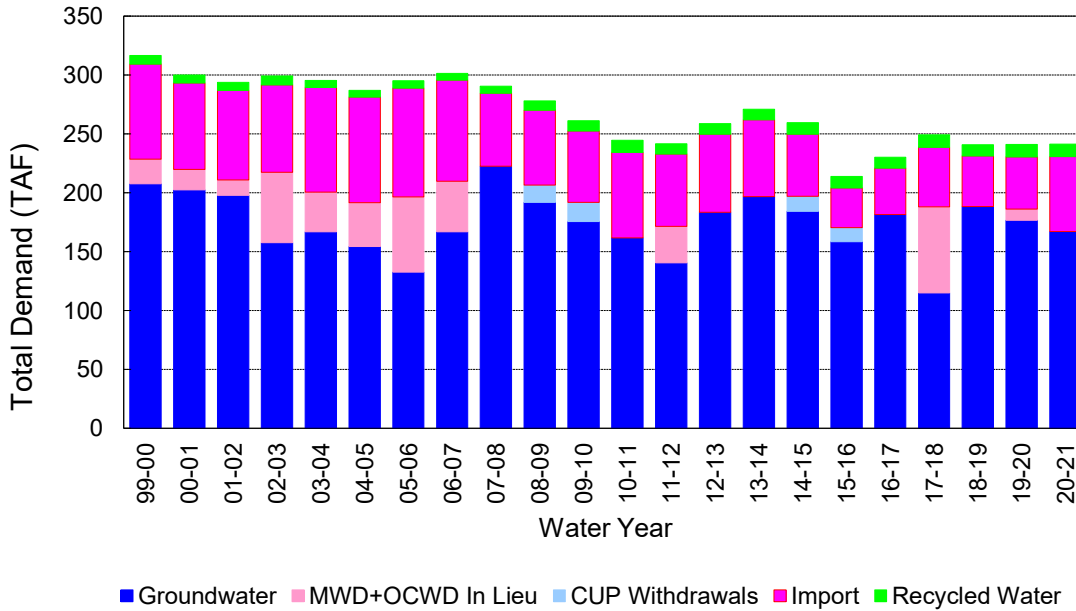
(2) Includes MWD CUP Withdrawals & In Lieu Water

2/11/2021 16:39

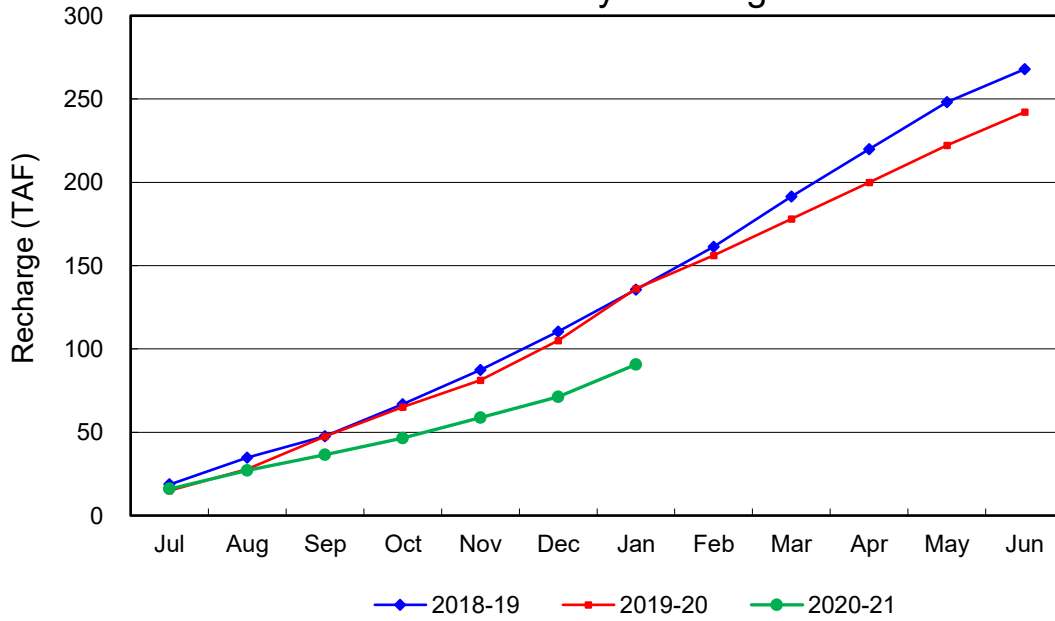
Annual Groundwater Production



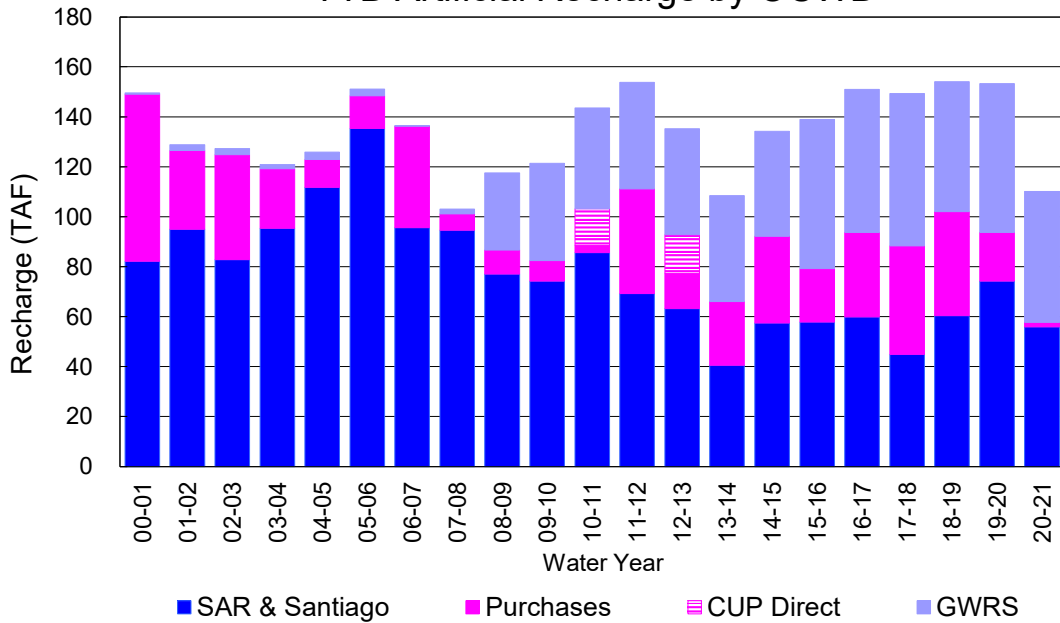
YTD Total Demand in OCWD



Annual Forebay Recharge



YTD Artificial Recharge by OCWD



RECHARGE AREAS REPORT

January 2021

	Percolation (AF)	Remarks
RIVER SYSTEM	4,522	74 cfs per day average
DESILTING SYSTEM	na	SAR
OFF-RIVER SYSTEM	1,175	
WARNER SYSTEM	789	SAR
OLIVE BASIN	na	Passive System inflow started
ANAHEIM LAKE	2,809	SAR
MINI-ANA LAKE	246	
MILLER BASIN	1,173	SAR
KRAEMER BASIN	1,844	SAR
LA PALMA BASIN	5,176	GWRS
MIRA LOMA	147	GWRS
LA JOLLA BASIN	321	
PLACENTIA BASIN	na	
RAYMOND BASIN	0	
FIVE COVES BASIN	na	
BURRIS BASIN	1,014	SAR
RIVER VIEW BASIN	0	
FLETCHER BASIN	24	
SANTIAGO BASINS	174	
SANTIAGO CREEK	0	
TOTALS	19,414	
5-YR AVERAGE	24,862	

FLOWS TO RECHARGE AREAS (AF)	
Imperial Headgates (estimated)	15,269
GWRS	5,345
OC-28 (MWD)	0
OC-28a (MWD)	0
OC-59	0
Est'd local Forebay inflow below Imperial	392
Est'd local Santiago inflow (estimated)	216
Irvine lake releases (OC-13 MWD)	0
Villa Park Dam releases (estimated)	0
Precip at Warner Basin (inches)	2.04
Precip direct to open water surfaces	119
TOTAL INFLOW	21,341

LOSSES FROM RECHARGE AREAS (AF)	
Est'd SAR flow past Chapman Ave.	279
Est'd Santiago Cr. flow to SAR	139
Est'd flows past Raymond Basin	0
Calc'd evap (inches) Estimated	2.87
Est'd evaporative losses	167
TOTAL LOSSES	585

STORAGE CHANGES (AF)			
Facility	Begin	End	Net
Deep basins	6,933	8,262	1,329
Santiago Pits	3,330	3,342	12
River			0
Off-river			0
Irvine Lake			
TOTAL	10,263	11,604	1,341

SUMMARY (AF)	
TOTAL INFLOW	21,341
TOTAL LOSSES	585
STORAGE CHANGE	1,341
CALC'D PERCOLATION	19,414

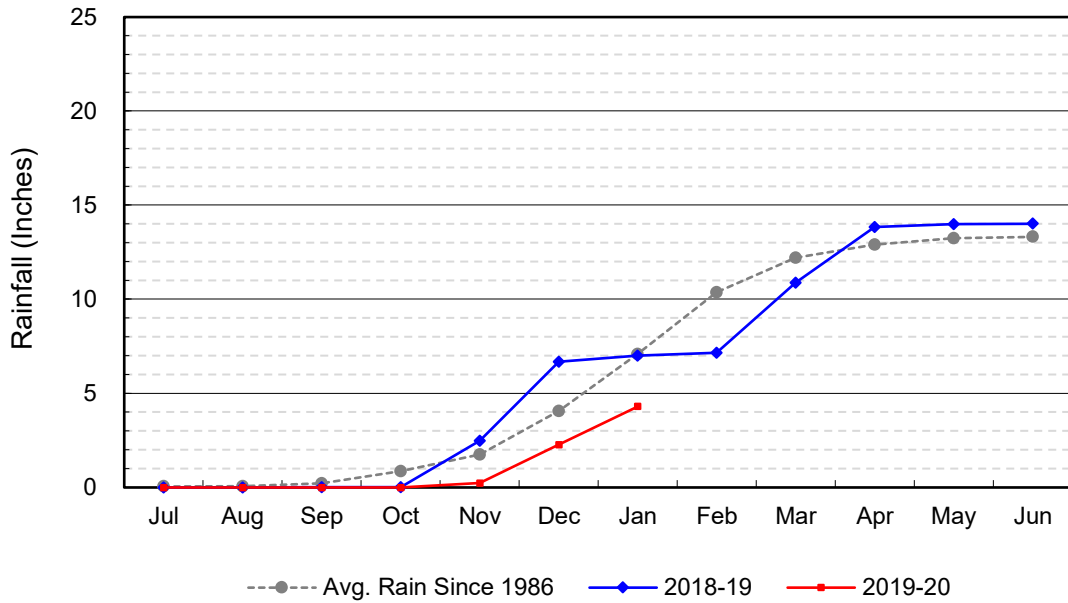
DEEP BASINS MONTHLY STATUS

January 2021

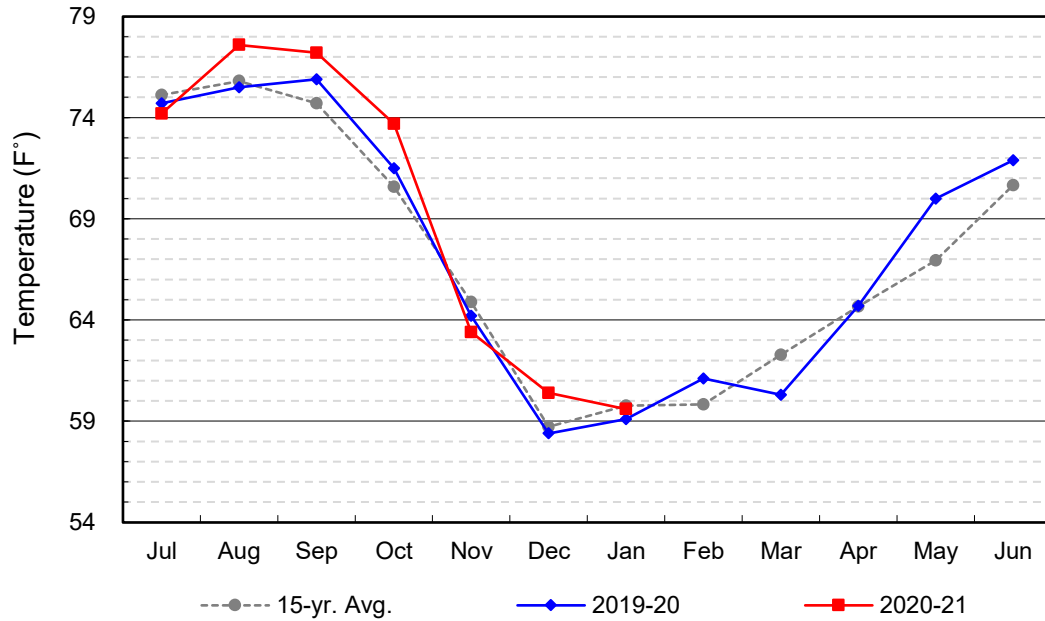
(values in acre-feet)

<i>Facility</i>	<i>Storage Start</i>	<i>Storage End</i>	<i>Maximum Storage</i>	<i>Total Perc</i>	<i>Max Perc</i>	<i>Avg Perc</i>	<i>Avg W.S. Elev</i>
Desilting Ponds	230	230	230	na	na	na	na
Fos-Huckleberry	574	553	630	na	na	na	na
Conrock Basin	610	582	660	na	na	na	na
Warner Basins	2,894	2,802	2,810	789	na	na	238
Olive Pit	34	25	183	na	na	na	207
Anaheim Lake	394	911	2,300	2,809	127	91	203
Mini-Anaheim Lk	6	6	21	246	12	8	223
Miller Basin	0	12	340	1,173	69	38	207
Kraemer Basin	115	339	1,050	1,844	84	59	180
La Palma Basin	70	77	105	5,176	189	167	218
Mira Loma	0	4	62	147	26	5	211
La Jolla Basin	0	7	36	321	22	10	201
Placentia Basin	0	0	350	na	0	0	na
Raymond Basin	0	0	370	0	0	0	na
Five Coves Basins	334	280	350	na	0	0	na
Burriss Pit	1,664	2,423	2,670	1,014	54	33	170
River View Basin	0	0	12	0	0	0	na
Fletcher Basin	8	11	15	24	3	1	185
Santiago (Bond)	2,203	2,441	8,690	174	21	6	206
Santiago (Blu Dia)	1,127	901	5,240	-	-	-	-
Totals	10,263	11,604	26,124	13,717			
Prado Dam	3,585	9,926	25,000				

Cumulative Anaheim Field HQ Rainfall



Temperature at Santa Ana Fire Station



TALBERT BARRIER MONITORING WELL OCWD-M26

