

WATER RESOURCES SUMMARY

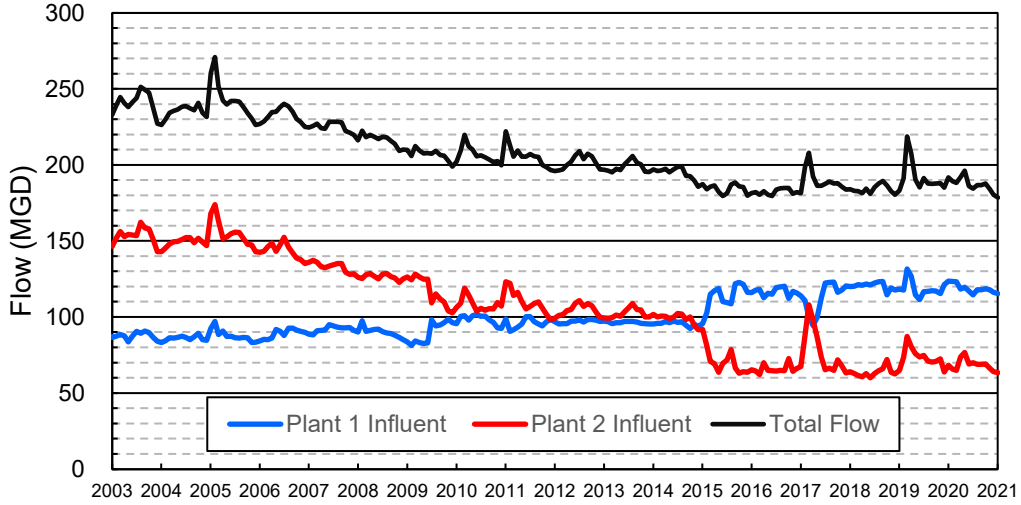
December 2020

INFLOWS & OUTFLOWS (acre-feet)	Total for Month	Year to Date - This Year Last Year	
BASIN SUPPLIES			
Water Purchases from MWD (excludes In Lieu)	0	0	18,029
Water into MWD Storage Account (excludes In Lieu)	0	0	0
SAR & Santiago Creek Flows (accounts for storage to/from recharge facilities)	8,333	44,312	54,317
GWRS Water to Forebay	5,107	29,458	36,494
GWRS Water to Mid-Basin Injection Wells	919	5,711	897
GWRS Water to Talbert Barrier	2,391	14,521	14,160
OC-44 Water to Talbert Barrier	3	14	0
Alamitos Barrier Water	245	1,467	1,080
Incidental Recharge (estimated)	4,800	13,200	17,800
Evaporation from Recharge Basins	(192)	(1,849)	(1,849)
River Flow Lost to Ocean	<u>(621)</u>	<u>(621)</u>	<u>(1,869)</u>
Total Groundwater Recharge	20,984	106,213	139,058
WATER PRODUCTION			
Groundwater Production	22,541	153,210	154,266
MWD Storage Program Withdrawals	<u>0</u>	<u>0</u>	<u>0</u>
Total Groundwater Production	22,541	153,210	154,266
BASIN BALANCE			
Change in Groundwater Storage	(1,556)	(46,997)	(15,208)
Change in Groundwater Storage excluding MWD Stored Water	(1,556)	(46,997)	(15,208)
Accumulated Overdraft	-----	246,998	251,209
Accumulated Overdraft excluding MWD Storage	-----	246,998	251,209
IN LIEU WATER			
OCWD In Lieu Purchases (MWD Cyclic Storage)	0	0	9,355
MWD In Lieu Storage	<u>0</u>	<u>0</u>	<u>0</u>
Total In Lieu	0	0	9,355
OTHER KEY INFORMATION			
1. MWD Water Deliveries to Producers	7,006	54,714	50,583
2. Basin Production Percentage	76.3%	73.7%	79.9%
3. Total Water Demand	30,981	217,103	214,007
4. Total GWRS Production	8,420	49,732	51,593
5. Green Acres Project Water	290	2,296	2,492
6. SAR Water Quality			
- Total Dissolved Solids (TDS) of SAR below Prado Dam (ppm)	696	-----	322
- Total Nitrogen of SAR below Prado Dam (ppm)	5.3	-----	3.4
7. Month-End Water Storage Behind Prado Dam	3,585	-----	12,075
8. Month-End Water Storage in Recharge Facilities	10,263	-----	21,079
9. Water Storage Change in Recharge Facilities	1,861	(5,476)	4,296
10. Total Artificial Recharge	16,184	93,013	121,258
11. Monthly Mean Temperature at Santa Ana Fire Station (°F)	60.4	-----	58.4
12. Rainfall at FHQ (inches)	2.04	2.27	6.67

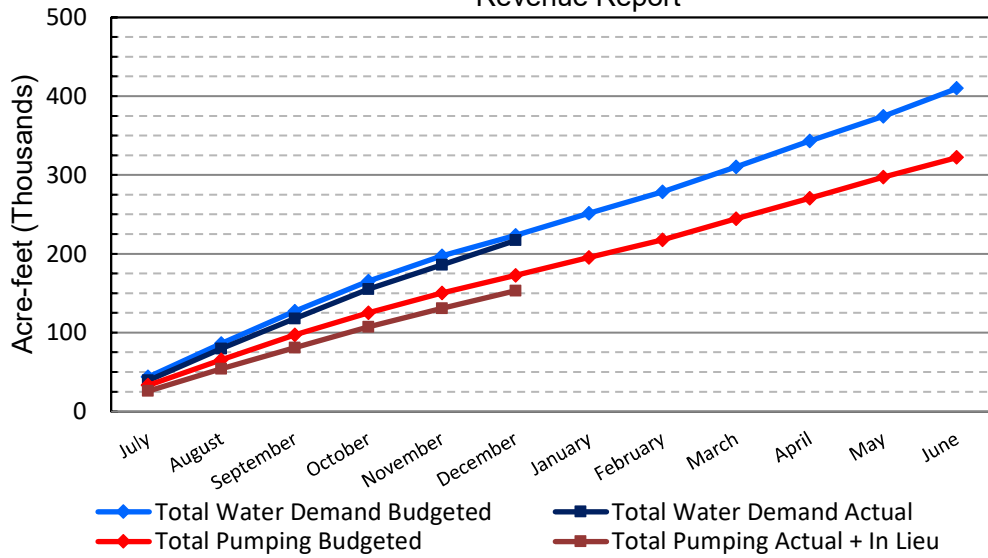
*** Note: Data are preliminary, subject to change

1/14/2021

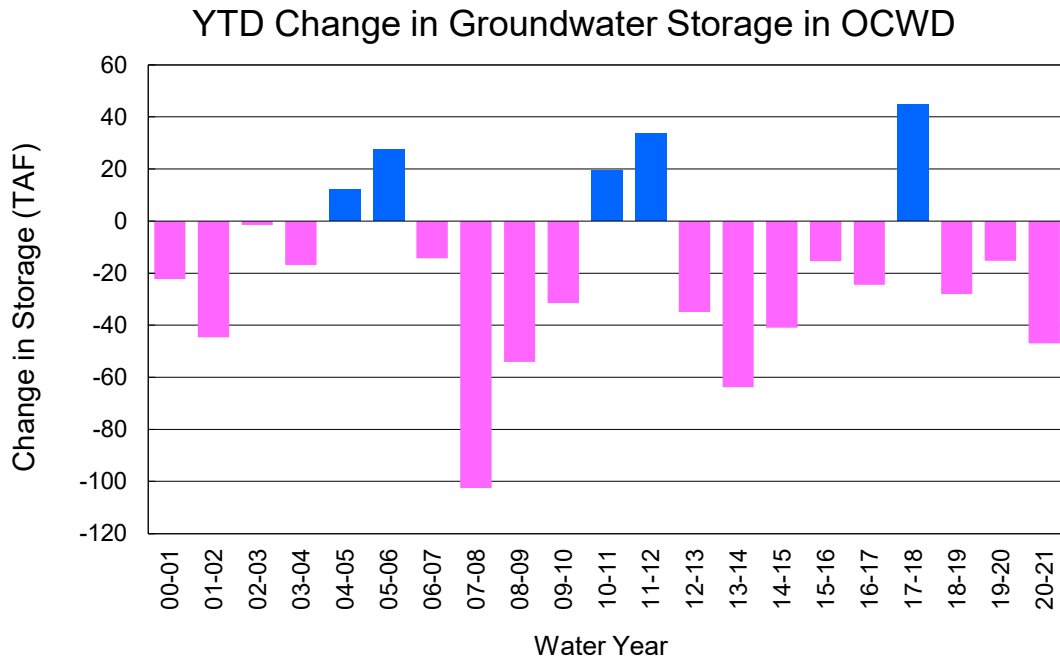
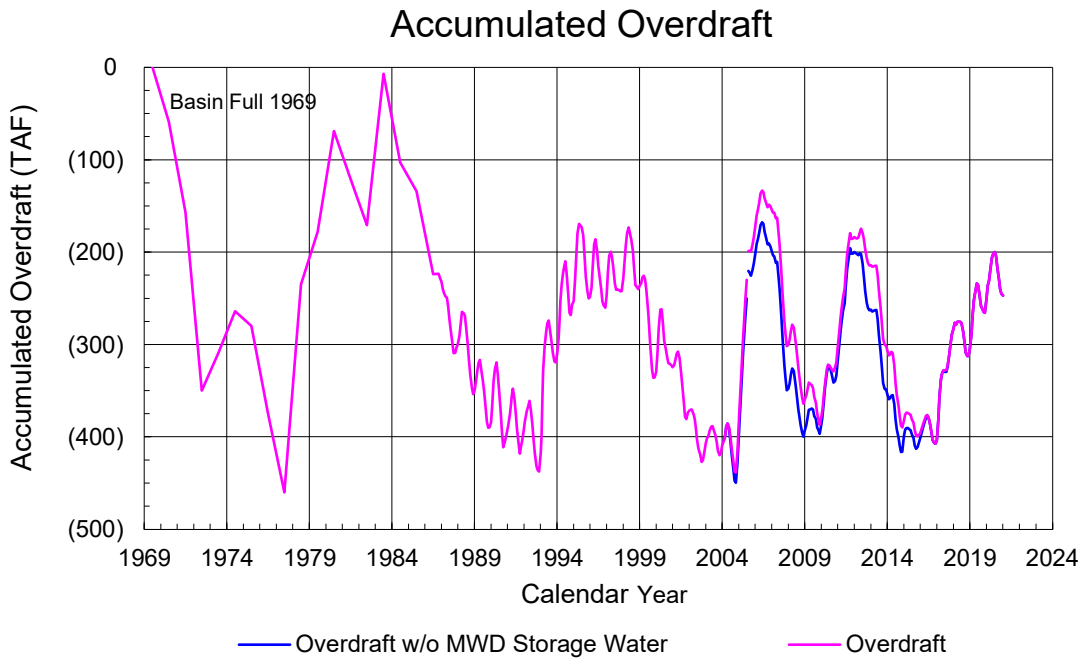
Orange County Sanitation District Influent Flows Report



2019-20 Water Demands/Groundwater Pumping + In Lieu/RA Revenue Report



	Monthly		Accumulated Total for the Year			
	Budget	Actual	Budget	Actual	Difference	Percent
Total Water Demand	26,300	30,981	223,500	217,103	-6,397	97.14%
Total Pumping + In Lieu	22,200	22,541	172,600	153,210	-19,390	88.77%
RA Revenue	\$10,256,400	\$10,413,768	\$79,741,200	\$70,783,123	-\$8,958,077	88.77%



PRODUCERS WATER USAGE SUMMARY

December 2020

(AF except BPP)

WATER AGENCY	Ground-water (1)	In Lieu	Reclaimed Water	Total Import (2)	Total Demand	2020-21 YTD Demand	2019-20 YTD Demand	YTD % Diff Demand	DEC 2020 BPP	2020-21 YTD BPP	2019-20 YTD BPP
Anaheim	1,109	0	0	3,945	5,054	32,024	32,981	97%	21.9%	26.1%	71.9%
Buena Park	816	0	0	111	927	7,134	7,218	99%	88.0%	87.1%	67.8%
East Orange County	54	0	0	68	122	570	452	126%	44.4%	9.8%	0.7%
Fountain Valley	696	0	97	0	792	5,504	5,555	99%	100.0%	100.0%	100.0%
Fullerton	1,255	0	0	563	1,818	13,308	13,315	100%	69.0%	73.3%	80.1%
Garden Grove	1,515	0	0	248	1,763	12,293	11,890	103%	85.9%	69.1%	58.8%
Golden State	1,351	0	0	528	1,878	13,167	12,429	106%	71.9%	71.3%	80.8%
West OC System	1,144	-	-	4	1,147	7,802	7,371	106%	na	na	na
East OC System	207	-	-	524	731	5,365	5,058	106%	na	na	na
Huntington Beach	1,919	0	0	182	2,101	14,997	14,174	106%	91.3%	79.7%	82.2%
Irvine Ranch	3,356	0	1,248	29	4,633	33,310	32,884	101%	99.1%	99.7%	99.8%
DRWF Clear	2,029	-	-	-	2,029	16,366	9,608	170%	na	na	na
DRWF Color	708	-	-	-	708	4,184	4,266	98%	na	na	na
Laguna Beach	144	0	0	190	334	2,051	1,857	na	43.1%	7.0%	67.8%
La Palma	151	0	0	0	151	1,090	1,046	104%	100.0%	100.0%	100.0%
Mesa Water (MW)	1,245	0	51	0	1,296	9,349	9,215	101%	100.0%	100.0%	96.5%
MW Clear	1,176	-	-	-	1,176	6,540	6,049	108%	na	na	na
MW Amber	69	-	-	-	69	2,267	1,755	129%	na	na	na
Newport Beach	1,087	0	20	2	1,109	8,384	8,021	105%	99.8%	94.9%	65.6%
Orange	2,030	0	0	128	2,158	15,239	15,018	101%	94.1%	76.0%	78.0%
OCWD (GAP)	113	0	0	0	113	860	757	114%	100.0%	100.0%	100.0%
Santa Ana	2,023	0	16	617	2,655	18,359	17,805	103%	76.6%	74.7%	75.2%
Seal Beach	249	0	0	1	250	1,887	1,787	106%	99.7%	54.2%	50.5%
Serrano	0	0	0	211	211	1,584	1,423	111%	0.0%	0.0%	76.9%
Tustin	887	0	0	3	891	6,105	5,708	107%	99.6%	96.5%	95.0%
Westminster	842	0	0	0	842	5,803	5,670	102%	100.0%	100.0%	72.4%
Yorba Linda	<u>1,352</u>	<u>0</u>	<u>0</u>	<u>172</u>	<u>1,525</u>	<u>11,660</u>	<u>10,520</u>	<u>111%</u>	<u>88.7%</u>	<u>82.4%</u>	<u>77.8%</u>
SUBTOTAL:	22,194	0	1,431	6,997	30,623	214,677	209,723	102%	76.3%	73.7%	79.9%
Other Producers (Est ~3% of Subtotal)	<u>0</u>	<u>0</u>	<u>0</u>	<u>0</u>	<u>0</u>	<u>2,426</u>	<u>4,283</u>	<u>57%</u>			
TOTAL:	22,194	0	1,431	7,006	30,632	217,103	214,007		76.3%	73.7%	79.9%
OCWD (Talbert Barrier)	0		2,391	3	2,394	14,535	14,160				
OCSD (GAP)	na		103	na	103	705	586				

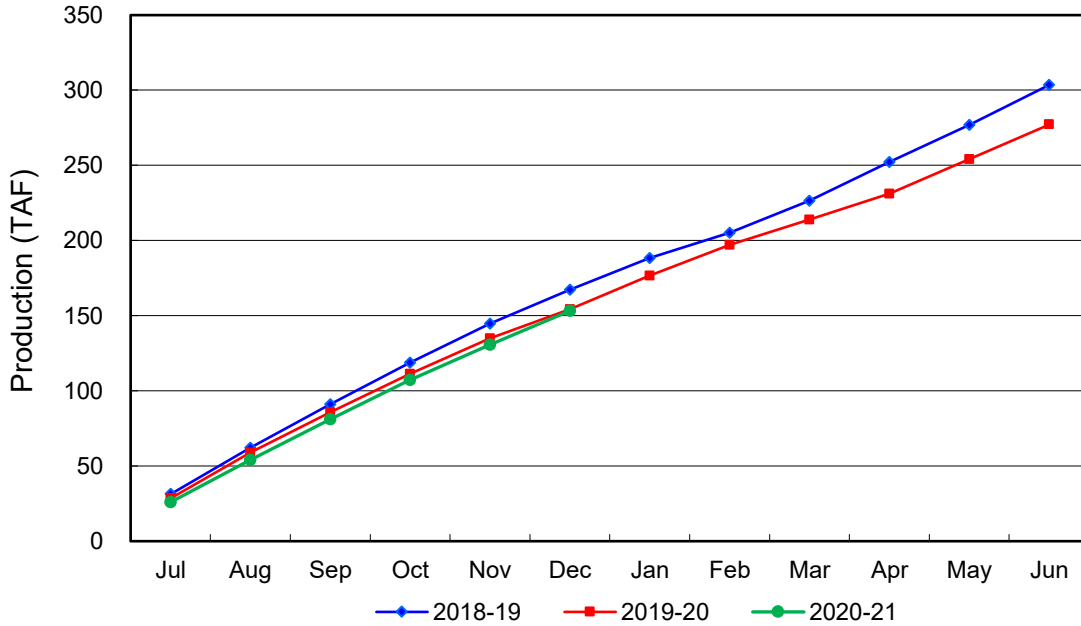
Estimated

(1) Excludes MWD CUP Withdrawals

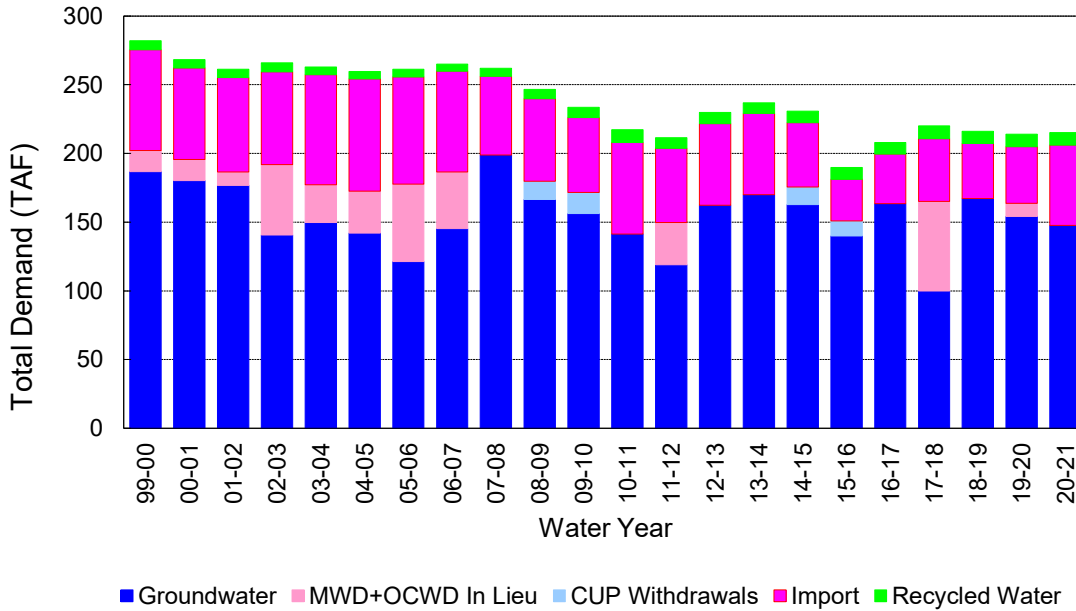
(2) Includes MWD CUP Withdrawals & In Lieu Water

1/14/2021 16:09

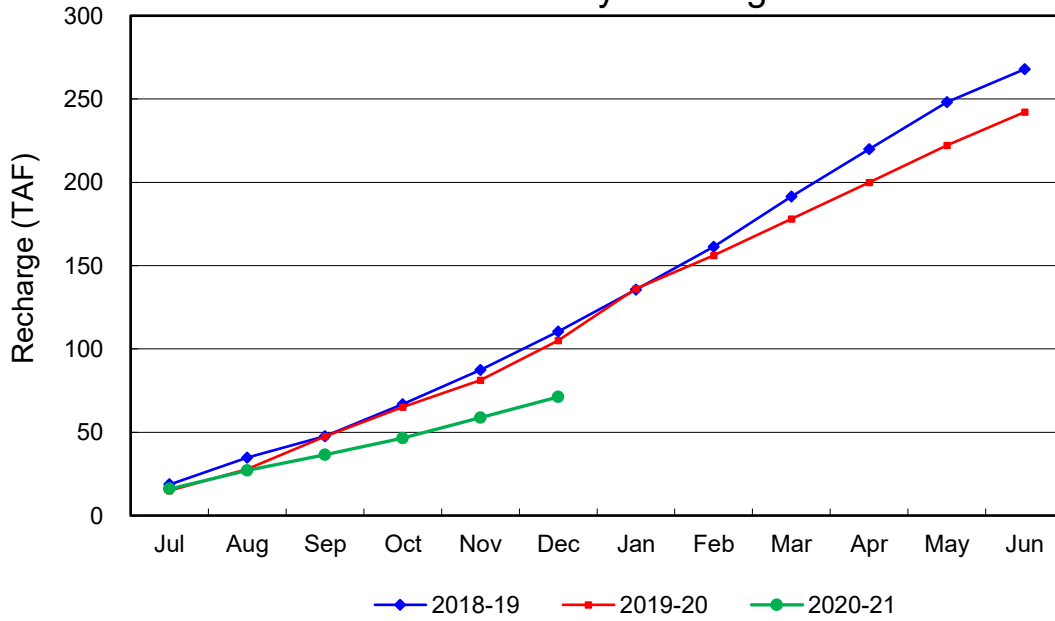
Annual Groundwater Production



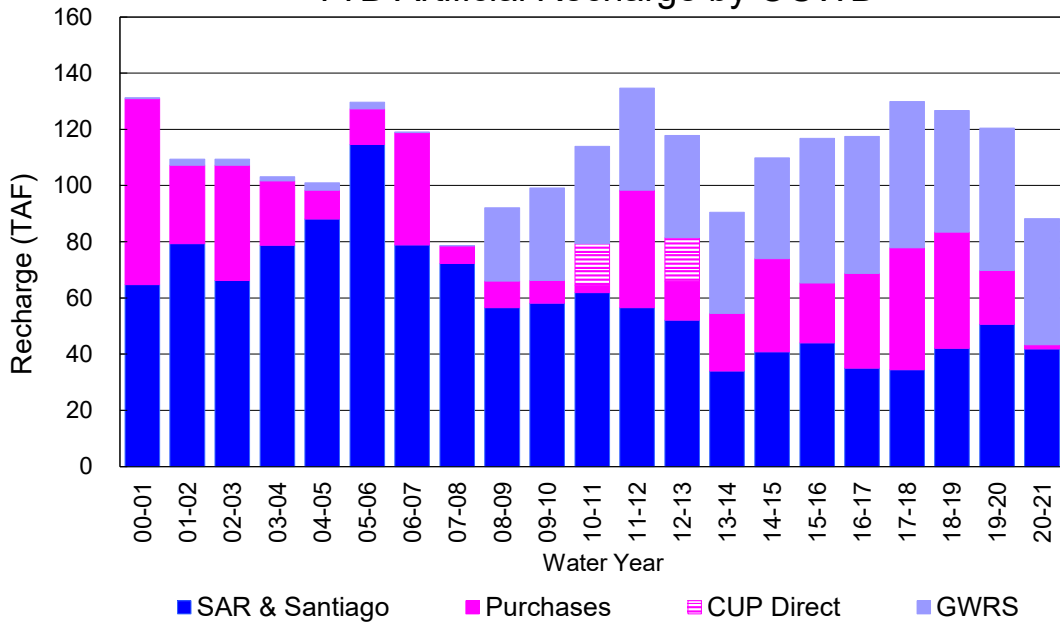
YTD Total Demand in OCWD



Annual Forebay Recharge



YTD Artificial Recharge by OCWD



RECHARGE AREAS REPORT

December 2020

	Percolation (AF)	Remarks
RIVER SYSTEM	3,992	65 cfs per day average
DESILTING SYSTEM	na	SAR
OFF-RIVER SYSTEM	2,044	
WARNER SYSTEM	653	SAR
OLIVE BASIN	na	Passive System inflow started
ANAHEIM LAKE	397	SAR
MINI-ANA LAKE	3	
MILLER BASIN	0	SAR
KRAEMER BASIN	116	SAR
LA PALMA BASIN	5,085	GWRS
MIRA LOMA	0	did not use, all GWRS flow to La Palma
LA JOLLA BASIN	0	
PLACENTIA BASIN	na	
RAYMOND BASIN	0	
FIVE COVES BASIN	na	
BURRIS BASIN	166	SAR
RIVER VIEW BASIN	0	
FLETCHER BASIN	15	
SANTIAGO BASINS	158	
SANTIAGO CREEK	0	
TOTALS	12,629	
5-YR AVERAGE	18,826	

FLOWS TO RECHARGE AREAS (AF)	
Imperial Headgates (estimated)	9,336
GWRS	5,109
OC-28 (MWD)	0
OC-28a (MWD)	0
OC-59	0
Est'd local Forebay inflow below Imperial	500
Est'd local Santiago inflow (estimated)	239
Irvine lake releases (OC-13 MWD)	0
Villa Park Dam releases (estimated)	0
Precip at Warner Basin (inches)	2.04
Precip direct to open water surfaces	119
TOTAL INFLOW	15,303

LOSSES FROM RECHARGE AREAS (AF)	
Est'd SAR flow past Chapman Ave.	441
Est'd Santiago Cr. flow to SAR	180
Est'd flows past Raymond Basin	0
Calc'd evap (inches) Estimated	3.29
Est'd evaporative losses	192
TOTAL LOSSES	813

STORAGE CHANGES (AF)			
Facility	Begin	End	Net
Deep basins	5,156	6,933	1,777
Santiago Pits	3,246	3,330	84
River			0
Off-river			0
Irvine Lake			
TOTAL	8,402	10,263	1,861

SUMMARY (AF)	
TOTAL INFLOW	15,303
TOTAL LOSSES	813
STORAGE CHANGE	1,861
CALC'D PERCOLATION	12,629

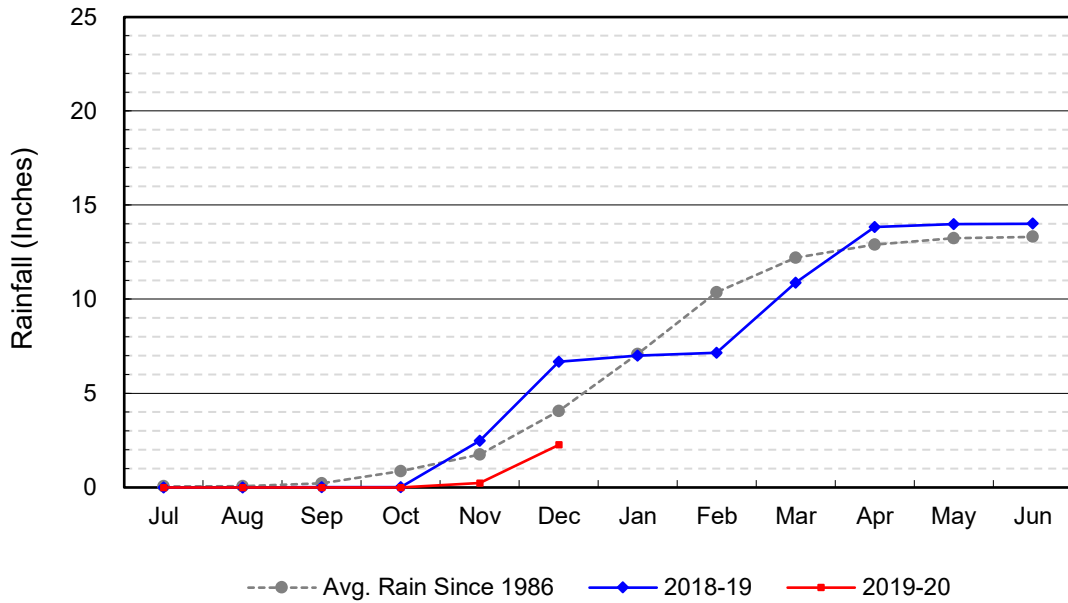
DEEP BASINS MONTHLY STATUS

December 2020

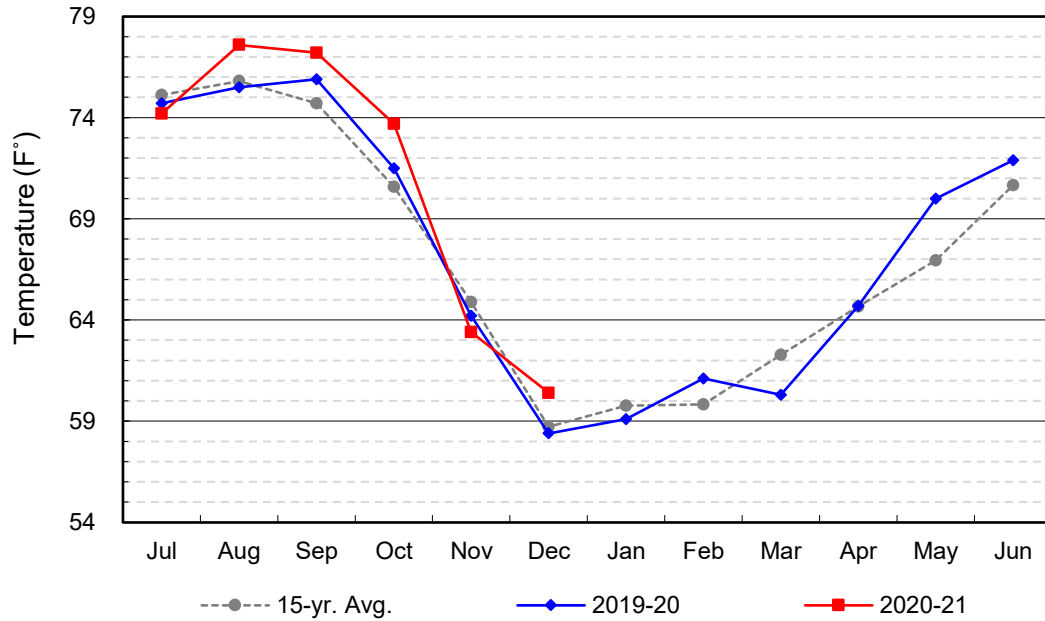
(values in acre-feet)

<i>Facility</i>	<i>Storage Start</i>	<i>Storage End</i>	<i>Maximum Storage</i>	<i>Total Perc</i>	<i>Max Perc</i>	<i>Avg Perc</i>	<i>Avg W.S. Elev</i>
Desilting Ponds	220	230	230	na	na	na	na
Fos-Huckleberry	520	574	630	na	na	na	na
Conrock Basin	548	610	660	na	na	na	na
Warner Basins	2,876	2,894	2,810	653	na	na	238
Olive Pit	6	34	183	na	na	na	204
Anaheim Lake	11	394	2,300	397	123	13	172
Mini-Anaheim Lk	0	6	21	3	3	0	220
Miller Basin	0	0	340	0	0	0	200
Kraemer Basin	0	115	1,050	116	53	4	166
La Palma Basin	49	70	105	5,085	180	164	216
Mira Loma	0	0	62	0	0	0	210
La Jolla Basin	0	0	36	0	0	0	199
Placentia Basin	0	0	350	na	na	na	na
Raymond Basin	0	0	370	0	0	0	na
Five Coves Basins	107	334	350	na	na	na	na
Burriss Pit	819	1,664	2,670	166	43	5	153
River View Basin	0	0	12	0	0	0	187
Fletcher Basin	0	8	15	15	5	0	185
Santiago (Bond)	2,212	2,203	8,690	158	14	5	204
Santiago (Blu Dia)	1,034	1,127	5,240	-	-	-	-
Totals	8,402	10,263	26,124	6,593			
Prado Dam	2	3,585	25,000				

Cumulative Anaheim Field HQ Rainfall



Temperature at Santa Ana Fire Station



TALBERT BARRIER MONITORING WELL OCWD-M26

