

WATER RESOURCES SUMMARY

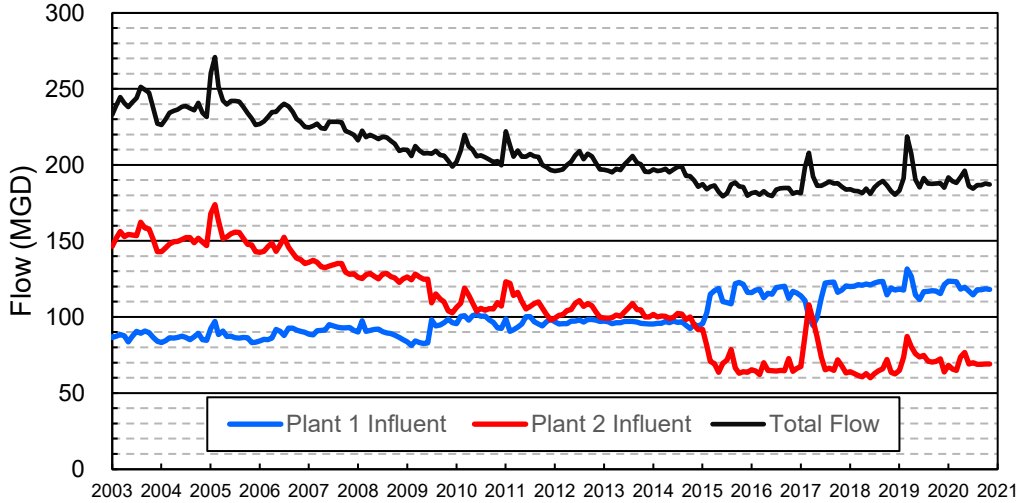
October 2020

INFLOWS & OUTFLOWS (acre-feet)	Total for Month	Year to Date - This Year Last Year	
BASIN SUPPLIES			
Water Purchases from MWD (excludes In Lieu)	0	0	14,626
Water into MWD Storage Account (excludes In Lieu)	0	0	0
SAR & Santiago Creek Flows (accounts for storage to/from recharge facilities)	5,193	28,641	28,800
GWRS Water to Forebay	5,036	19,333	23,223
GWRS Water to Mid-Basin Injection Wells	993	3,860	598
GWRS Water to Talbert Barrier	2,570	9,724	10,339
OC-44 Water to Talbert Barrier	0	10	0
Alamitos Barrier Water	230	909	660
Incidental Recharge (estimated)	1,300	5,900	5,700
Evaporation from Recharge Basins	(271)	(1,455)	(1,455)
River Flow Lost to Ocean	<u>0</u>	<u>0</u>	<u>0</u>
Total Groundwater Recharge	15,050	66,921	82,490
WATER PRODUCTION			
Groundwater Production	26,340	107,336	111,260
MWD Storage Program Withdrawals	<u>0</u>	<u>0</u>	<u>0</u>
Total Groundwater Production	26,340	107,336	111,260
BASIN BALANCE			
Change in Groundwater Storage	(11,290)	(40,414)	(28,770)
Change in Groundwater Storage excluding MWD Stored Water	(11,290)	(40,414)	(28,770)
Accumulated Overdraft	-----	240,414	264,770
Accumulated Overdraft excluding MWD Storage	-----	240,414	264,770
IN LIEU WATER			
OCWD In Lieu Purchases (MWD Cyclic Storage)	0	0	5,135
MWD In Lieu Storage	<u>0</u>	<u>0</u>	<u>0</u>
Total In Lieu	0	0	5,135
OTHER KEY INFORMATION			
1. MWD Water Deliveries to Producers	9,315	41,361	38,812
2. Basin Production Percentage	73.9%	72.2%	77.6%
3. Total Water Demand	37,218	155,022	156,486
4. Total GWRS Production	8,606	32,951	34,187
5. Green Acres Project Water	408	1,731	1,960
6. SAR Water Quality			
- Total Dissolved Solids (TDS) of SAR below Prado Dam (ppm)	754	-----	724
- Total Nitrogen of SAR below Prado Dam (ppm)	5.3	-----	5.0
7. Month-End Water Storage Behind Prado Dam	2	-----	1
8. Month-End Water Storage in Recharge Facilities	8,481	-----	8,641
9. Water Storage Change in Recharge Facilities	(422)	(7,258)	(8,142)
10. Total Artificial Recharge	13,750	61,021	76,790
11. Monthly Mean Temperature at Santa Ana Fire Station (°F)	73.7	-----	71.5
12. Rainfall at FHQ (inches)	0.00	0.00	0.01

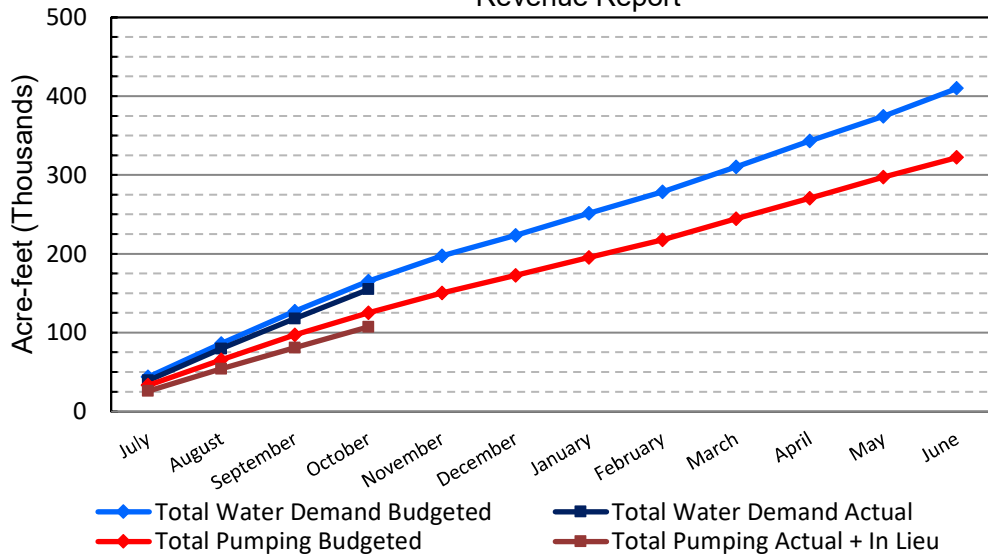
*** Note: Data are preliminary, subject to change

11/12/2020

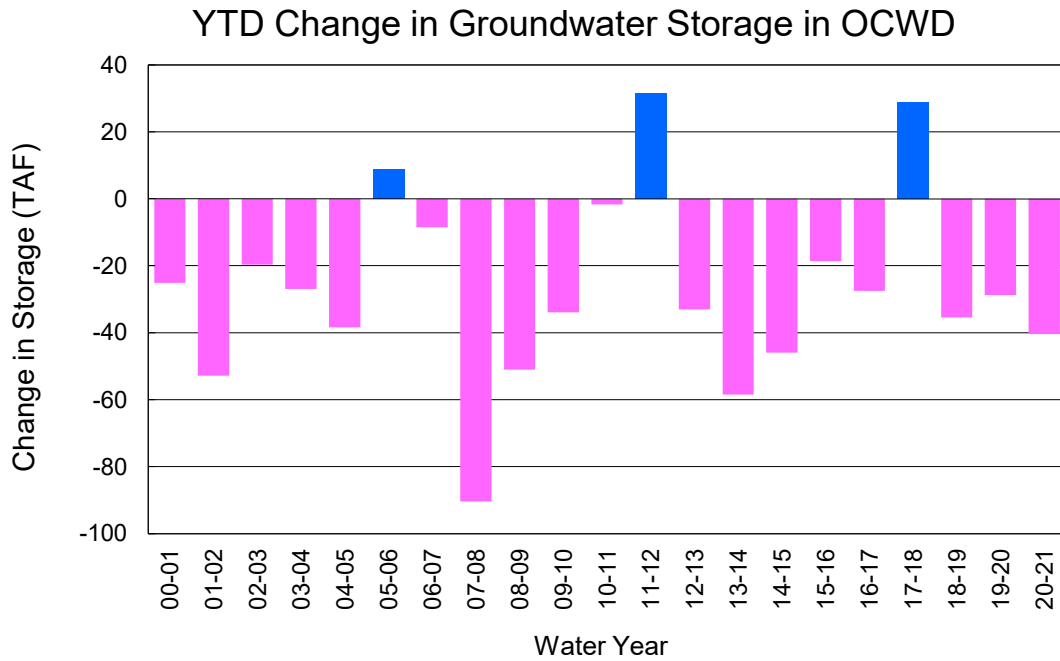
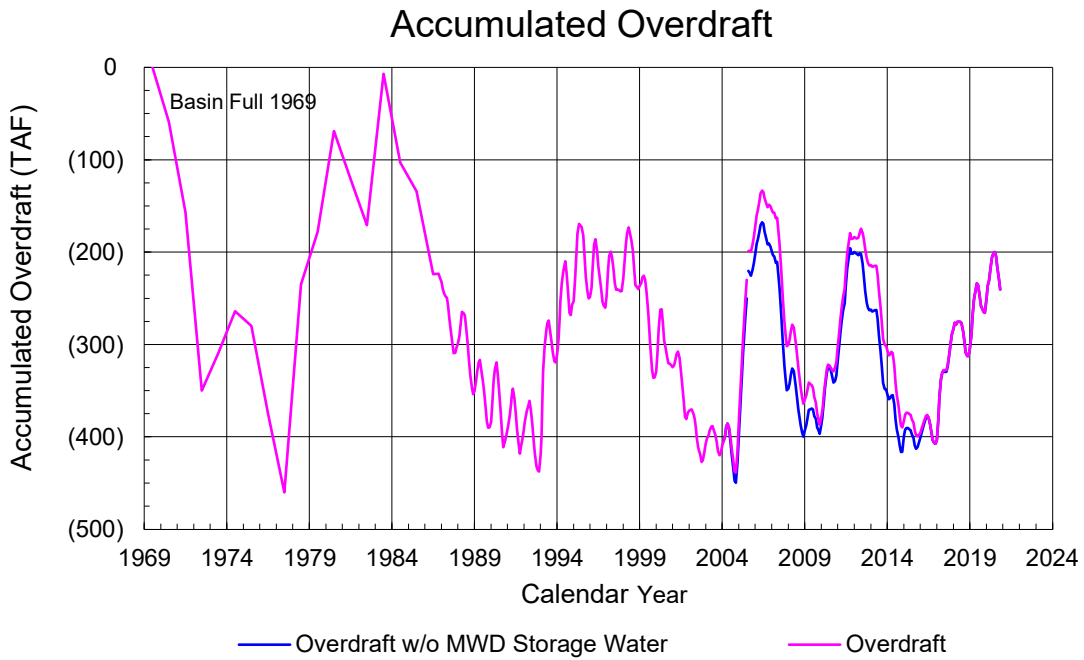
Orange County Sanitation District Influent Flows Report



2019-20 Water Demands/Groundwater Pumping + In Lieu/RA Revenue Report



	Monthly		Accumulated Total for the Year			
	Budget	Actual	Budget	Actual	Difference	Percent
Total Water Demand	38,100	37,218	165,200	155,022	-10,178	93.84%
Total Pumping + In Lieu	28,100	26,340	125,200	107,336	-17,864	85.73%
RA Revenue	\$12,982,200	\$12,169,181	\$57,842,400	\$49,589,021	-\$8,253,379	85.73%



PRODUCERS WATER USAGE SUMMARY

October 2020

(AF except BPP)

WATER AGENCY	Ground-water (1)	In Lieu	Reclaimed Water	Total Import (2)	Total Demand	2020-21 YTD Demand	2019-20 YTD Demand	YTD % Diff Demand	OCT 2020 BPP	2020-21 YTD BPP	2019-20 YTD BPP
Anaheim	1,453	0	0	4,086	5,539	22,522	24,201	93%	26.2%	26.3%	69.6%
Buena Park	1,083	0	0	108	1,190	5,152	5,346	96%	90.9%	85.3%	61.2%
East Orange County	0	0	0	90	91	372	338	110%	0.4%	0.1%	0.7%
Fountain Valley	835	0	102	0	937	3,904	4,131	94%	100.0%	100.0%	100.0%
Fullerton	1,422	0	0	806	2,228	9,637	9,997	96%	63.8%	75.0%	79.0%
Garden Grove	1,535	0	0	531	2,065	8,754	8,658	101%	74.3%	62.4%	60.7%
Golden State	1,624	0	0	593	2,217	9,419	9,159	103%	73.2%	70.8%	79.6%
West OC System	1,311	-	-	4	1,315	5,510	5,359	103%	na	na	na
East OC System	313	-	-	589	902	3,909	3,801	103%	na	na	na
Huntington Beach	1,757	0	0	737	2,494	10,791	10,376	104%	70.4%	76.0%	75.7%
Irvine Ranch	4,640	0	1,283	5	5,929	23,666	23,037	103%	99.9%	99.7%	99.8%
DRWF Clear	3,044	-	-	-	3,044	11,905	7,675	155%	na	na	na
DRWF Color	697	-	-	-	697	2,794	2,873	97%	na	na	na
Laguna Beach	0	0	0	320	320	1,373	1,356	na	0.0%	0.0%	72.3%
La Palma	183	0	0	0	183	767	757	101%	100.0%	100.0%	100.0%
Mesa Water (MW)	1,506	0	95	0	1,600	6,752	6,783	100%	100.0%	100.0%	95.3%
MW Clear	1,109	-	-	-	1,109	4,434	4,082	109%	na	na	na
MW Amber	397	-	-	-	397	1,877	1,533	122%	na	na	na
Newport Beach	1,265	0	48	145	1,458	6,068	5,969	102%	89.7%	93.2%	67.0%
Orange	2,010	0	0	586	2,596	11,014	11,082	99%	77.4%	69.6%	75.8%
OCWD (GAP)	124	0	0	0	124	629	556	113%	100.0%	100.0%	100.0%
Santa Ana	2,570	0	31	499	3,100	12,966	12,773	102%	83.8%	73.3%	66.6%
Seal Beach	304	0	0	0	304	1,372	1,319	104%	99.9%	37.1%	33.4%
Serrano	0	0	0	275	275	1,163	1,122	104%	0.0%	0.0%	74.2%
Tustin	1,004	0	0	26	1,030	4,330	4,248	102%	97.5%	95.1%	94.1%
Westminster	976	0	0	0	976	4,086	4,069	100%	100.0%	100.0%	75.2%
Yorba Linda	<u>1,644</u>	<u>0</u>	<u>0</u>	<u>496</u>	<u>2,140</u>	<u>8,583</u>	<u>8,118</u>	<u>106%</u>	<u>76.8%</u>	<u>80.1%</u>	<u>74.7%</u>
SUBTOTAL:	25,935	0	1,560	9,304	36,799	153,319	153,394	100%	73.9%	72.2%	77.6%
Other Producers (Est ~3% of Subtotal)	<u>0</u>	<u>0</u>	<u>0</u>	<u>12</u>	<u>12</u>	<u>1,703</u>	<u>3,092</u>	<u>55%</u>			
TOTAL:	25,935	0	1,561	9,315	36,812	155,022	156,486		73.9%	72.2%	77.6%
OCWD (Talbert Barrier)	0		2,570	0	2,570	9,734	10,339				
OCSA (GAP)	na		130	na	130	515	368				

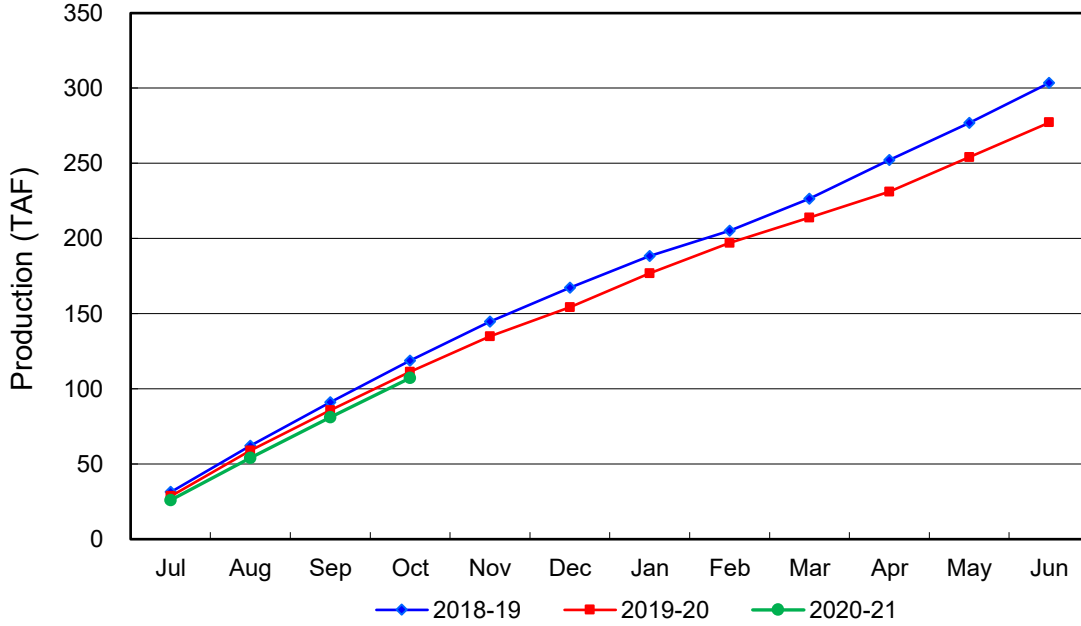
Estimated

(1) Excludes MWD CUP Withdrawals

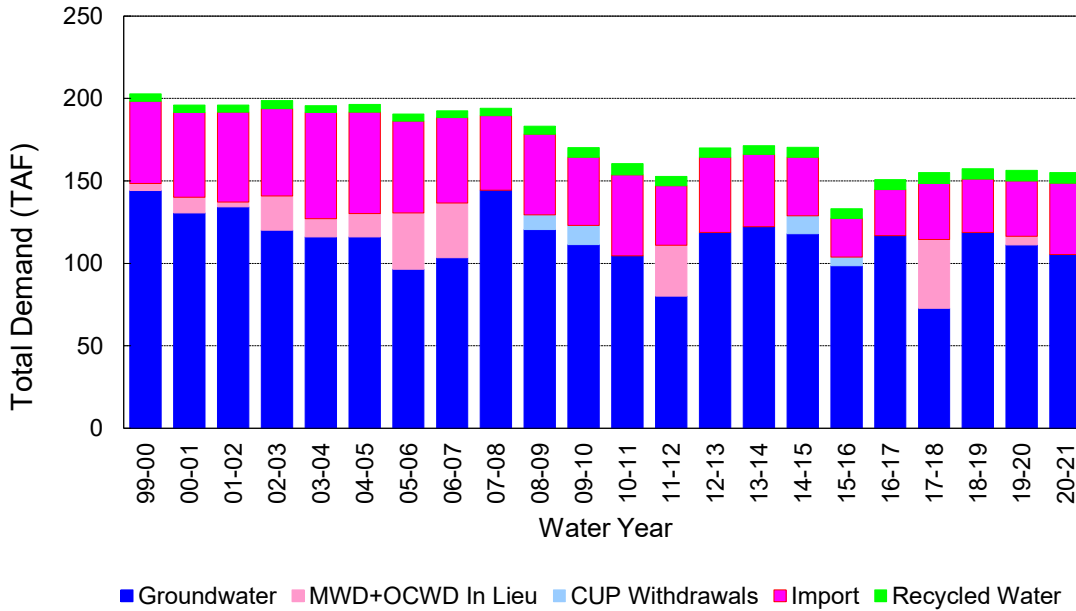
(2) Includes MWD CUP Withdrawals & In Lieu Water

11/12/2020 13:26

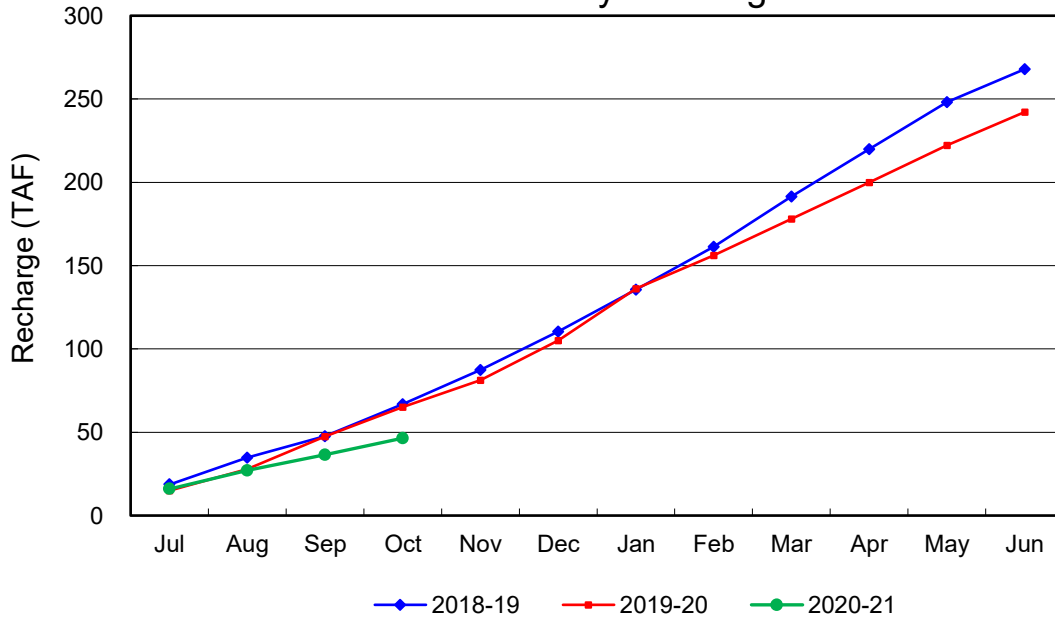
Annual Groundwater Production



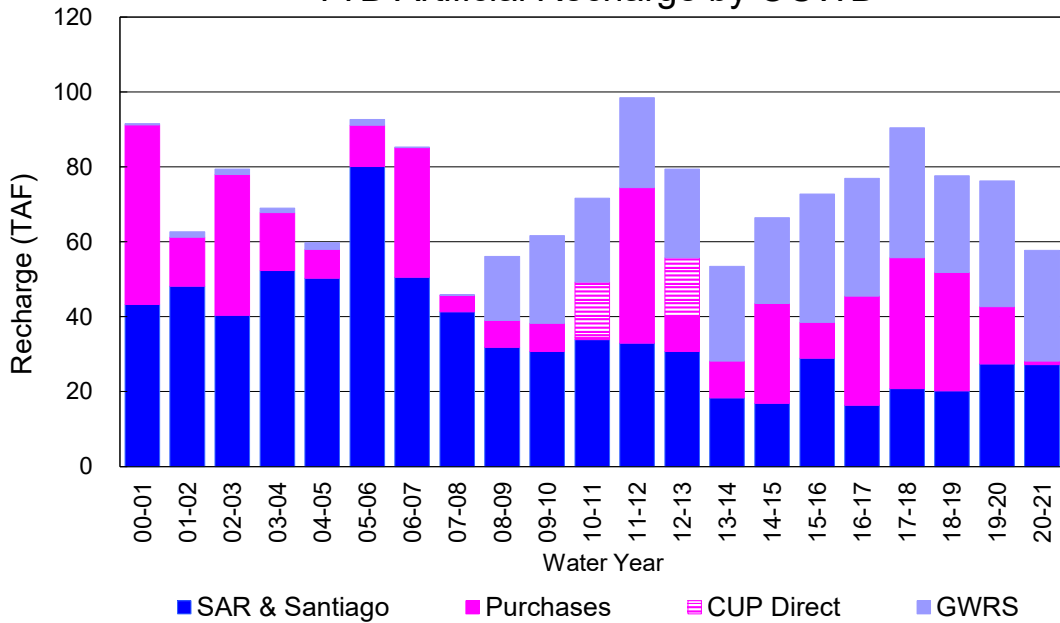
YTD Total Demand in OCWD



Annual Forebay Recharge



YTD Artificial Recharge by OCWD



RECHARGE AREAS REPORT

October 2020

	Percolation (AF)	Remarks
RIVER SYSTEM	3,302	54 cfs per day average
DESILTING SYSTEM	0	
OFF-RIVER SYSTEM	0	0
WARNER SYSTEM	1,132	SAR
OLIVE BASIN	na	0
ANAHEIM LAKE	na	0
MINI-ANA LAKE	na	0
MILLER BASIN	na	0
KRAEMER BASIN	na	0
LA PALMA BASIN	5,032	
MIRA LOMA	na	did not use, all GWRS flow to La Palma
LA JOLLA BASIN	na	
PLACENTIA BASIN	na	
RAYMOND BASIN	na	
FIVE COVES BASIN	na	0
BURRIS BASIN	205	
RIVER VIEW BASIN	na	
FLETCHER BASIN	na	
SANTIAGO BASINS	289	
SANTIAGO CREEK	0	
TOTALS	9,960	
5-YR AVERAGE	20,321	

FLOWS TO RECHARGE AREAS (AF)	
Imperial Headgates (estimated)	4,740
GWRS	5,038
OC-28 (MWD)	0
OC-28a (MWD)	0
CB-11	0
CB-18	0
Est'd local Forebay inflow below Imperial	0
Est'd local Santiago inflow (estimated)	31
Irvine lake releases (OC-13 MWD)	0
Villa Park Dam releases (estimated)	0
Precip at Warner Basin (inches)	0
Precip direct to open water surfaces	0
TOTAL INFLOW	9,809

LOSSES FROM RECHARGE AREAS (AF)	
Est'd SAR flow past Chapman Ave.	0
Est'd Santiago Cr. flow to SAR	0
Est'd flows past Raymond Basin	0
Calc'd evap (inches) Estimated	4.65
Est'd evaporative losses	271
TOTAL LOSSES	271

STORAGE CHANGES (AF)			
Facility	Begin	End	Net
Deep basins	5,278	5,116	-162
Santiago Pits	3,625	3,365	-260
River			0
Off-river			0
Irvine Lake			
TOTAL	8,903	8,481	-422

SUMMARY (AF)	
TOTAL INFLOW	9,809
TOTAL LOSSES	271
STORAGE CHANGE	-422
CALC'D PERCOLATION	9,960

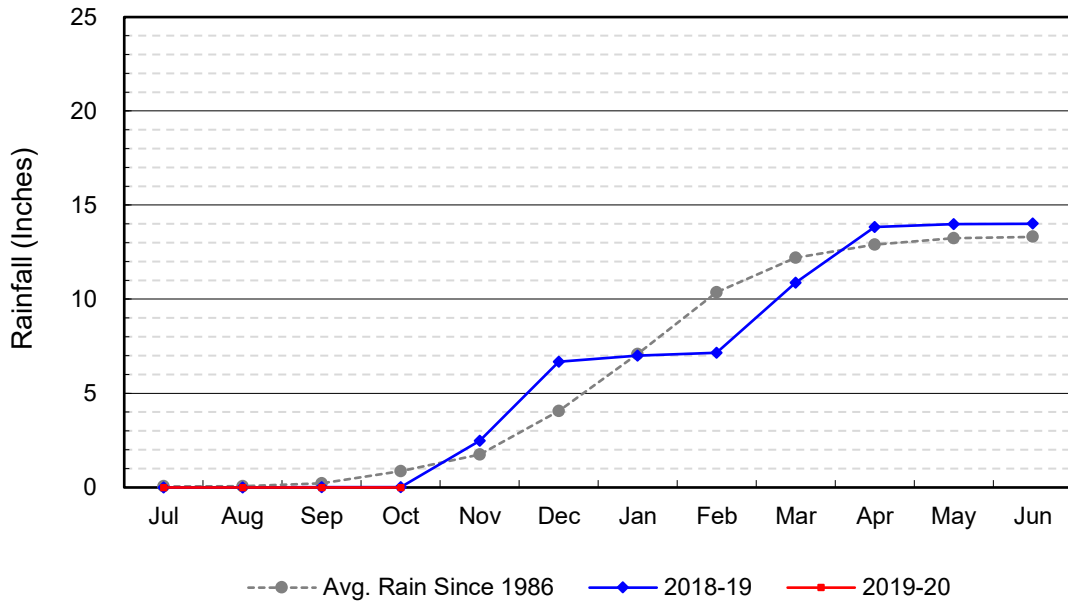
DEEP BASINS MONTHLY STATUS

October 2020

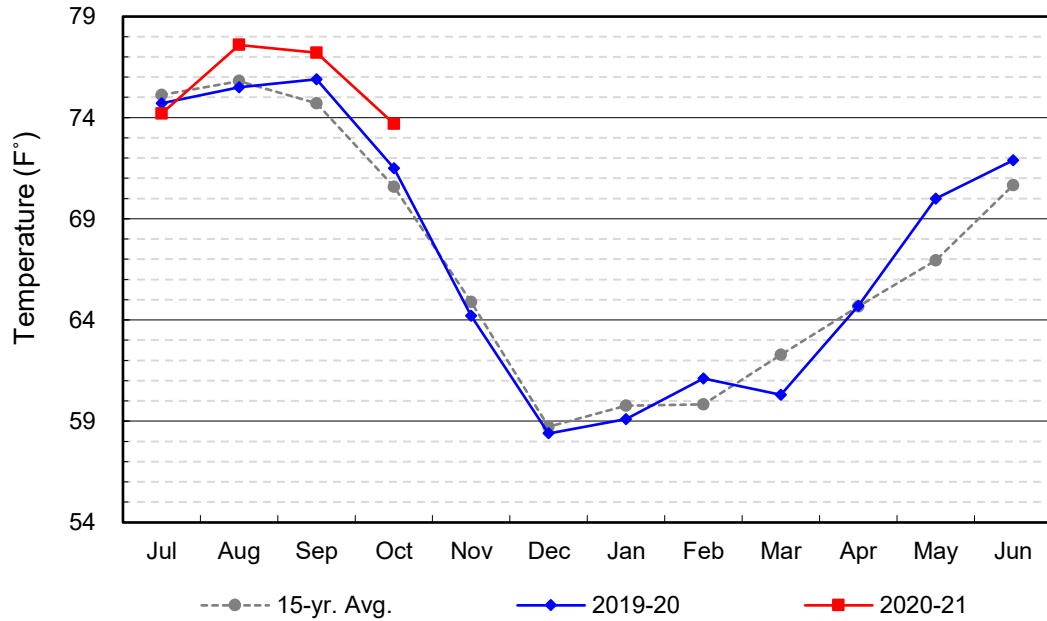
(values in acre-feet)

<i>Facility</i>	<i>Storage Start</i>	<i>Storage End</i>	<i>Maximum Storage</i>	<i>Total Perc</i>	<i>Max Perc</i>	<i>Avg Perc</i>	<i>Avg W.S. Elev</i>
Desilting Ponds	200	200	230	na	na	na	na
Fos-Huckleberry	520	524	630	na	na	na	na
Conrock Basin	548	551	660	na	na	na	na
Warner Basins	2,843	2,876	2,810	1,132	na	na	238
Olive Pit	0	0	183	na	na	na	na
Anaheim Lake	0	0	2,300	na	na	na	na
Mini-Anaheim Lk	0	0	21	na	na	na	na
Miller Basin	0	0	340	na	na	na	na
Kraemer Basin	0	0	1,050	na	na	na	na
La Palma Basin	34	37	105	5,032	176	162	214
Mira Loma	0	0	62	na	na	na	na
La Jolla Basin	0	0	36	na	na	na	na
Placentia Basin	0	0	350	na	na	na	na
Raymond Basin	0	0	370	na	na	na	na
Five Coves Basins	0	0	350	na	na	na	na
Burriss Pit	1,133	928	2,670	205	8	7	156
River View Basin	0	0	12	na	na	na	na
Fletcher Basin	0	0	15	na	na	na	na
Santiago (Bond)	2,545	2,335	8,690	289	14	9	209
Santiago (Blu Dia)	1,080	1,030	5,240	-	-	-	-
Totals	8,903	8,481	26,124	6,658			
Prado Dam	0	2	25,000				

Cumulative Anaheim Field HQ Rainfall



Temperature at Santa Ana Fire Station



TALBERT BARRIER MONITORING WELL OCWD-M26

