

# WATER RESOURCES SUMMARY

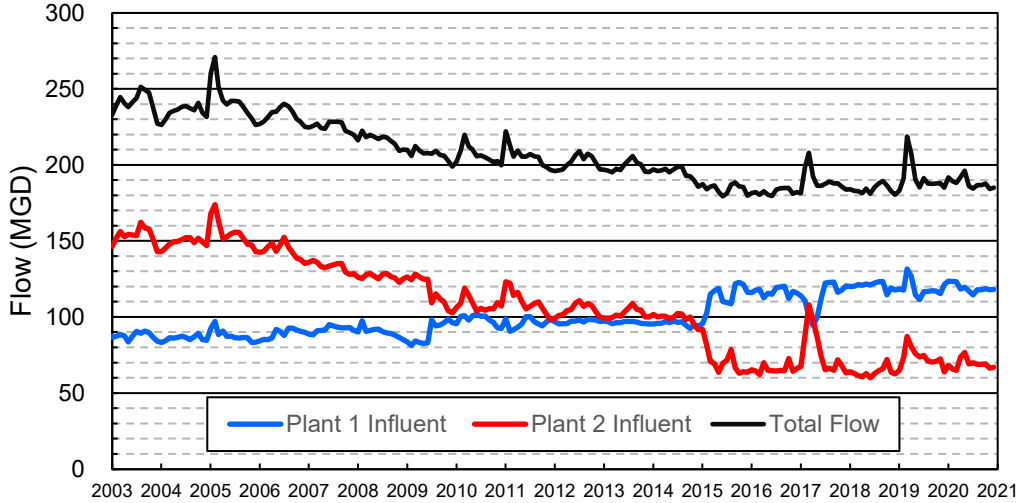
November 2020

INFLOWS & OUTFLOWS (acre-feet)	Total for Month	Year to Date - This Year    Last Year	
<b>BASIN SUPPLIES</b>			
Water Purchases from MWD (excludes In Lieu)	0	0	17,681
Water into MWD Storage Account (excludes In Lieu)	0	0	0
SAR & Santiago Creek Flows (accounts for storage to/from recharge facilities)	7,338	35,979	35,378
GWRS Water to Forebay	5,018	24,351	29,796
GWRS Water to Mid-Basin Injection Wells	932	4,792	742
GWRS Water to Talbert Barrier	2,407	12,131	12,396
OC-44 Water to Talbert Barrier	0	10	0
Alamitos Barrier Water	260	1,225	866
Incidental Recharge (estimated)	2,500	8,400	10,200
Evaporation from Recharge Basins	(202)	(1,657)	(1,657)
River Flow Lost to Ocean	<u>0</u>	<u>0</u>	<u>0</u>
Total Groundwater Recharge	18,254	85,232	105,402
<b>WATER PRODUCTION</b>			
Groundwater Production	23,337	130,672	135,004
MWD Storage Program Withdrawals	<u>0</u>	<u>0</u>	<u>0</u>
Total Groundwater Production	23,337	130,672	135,004
<b>BASIN BALANCE</b>			
Change in Groundwater Storage	(5,082)	(45,441)	(29,602)
Change in Groundwater Storage excluding MWD Stored Water	(5,082)	(45,441)	(29,602)
Accumulated Overdraft	-----	245,441	265,602
Accumulated Overdraft excluding MWD Storage	-----	245,441	265,602
<b>IN LIEU WATER</b>			
OCWD In Lieu Purchases (MWD Cyclic Storage)	0	0	7,655
MWD In Lieu Storage	<u>0</u>	<u>0</u>	<u>0</u>
Total In Lieu	0	0	7,655
<b>OTHER KEY INFORMATION</b>			
1. MWD Water Deliveries to Producers	6,332	47,708	46,107
2. Basin Production Percentage	78.7%	73.3%	78.8%
3. Total Water Demand	31,071	186,125	188,910
4. Total GWRS Production	8,361	41,312	42,968
5. Green Acres Project Water	258	2,006	2,205
6. SAR Water Quality			
- Total Dissolved Solids (TDS) of SAR below Prado Dam (ppm)	570	-----	682
- Total Nitrogen of SAR below Prado Dam (ppm)	5.0	-----	4.6
7. Month-End Water Storage Behind Prado Dam	2	-----	7,392
8. Month-End Water Storage in Recharge Facilities	8,402	-----	10,292
9. Water Storage Change in Recharge Facilities	(79)	(7,337)	(6,491)
10. Total Artificial Recharge	15,754	76,832	95,202
11. Monthly Mean Temperature at Santa Ana Fire Station (°F)	63.4	-----	64.2
12. Rainfall at FHQ (inches)	0.23	0.23	2.48

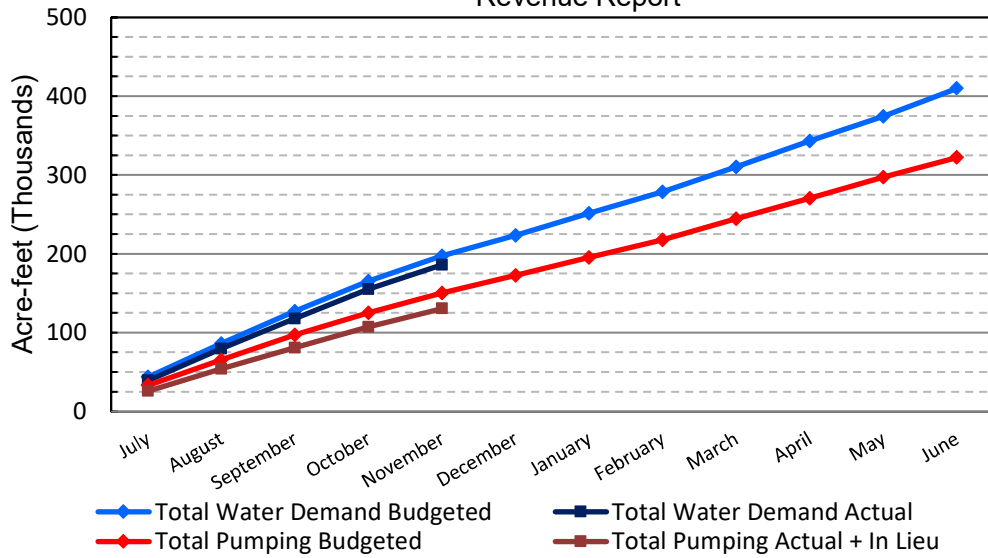
\*\*\* Note: Data are preliminary, subject to change

12/10/2020

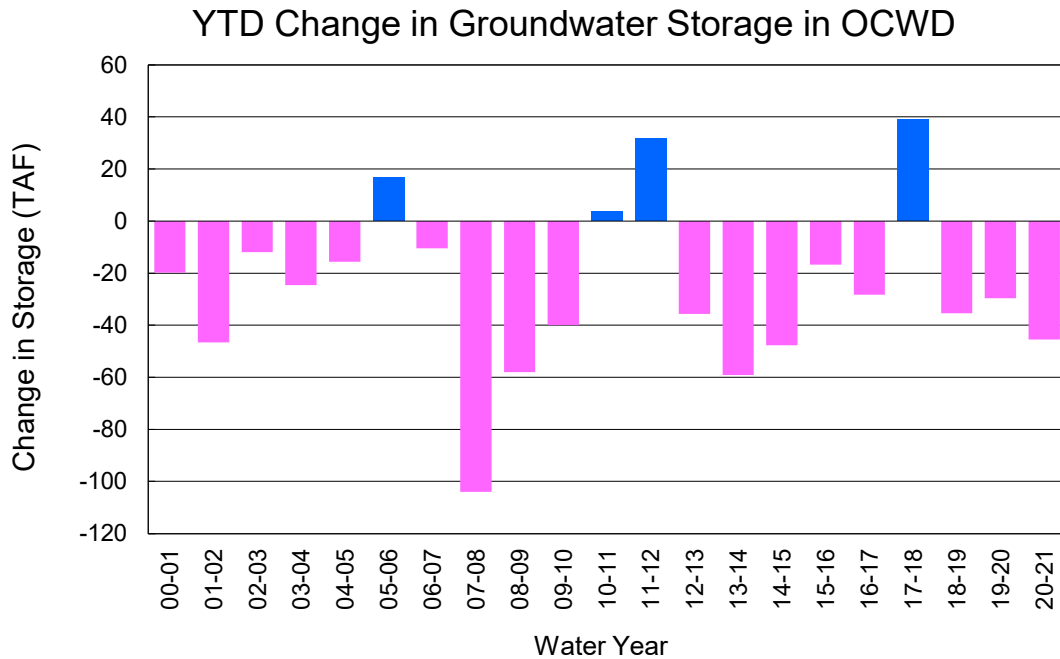
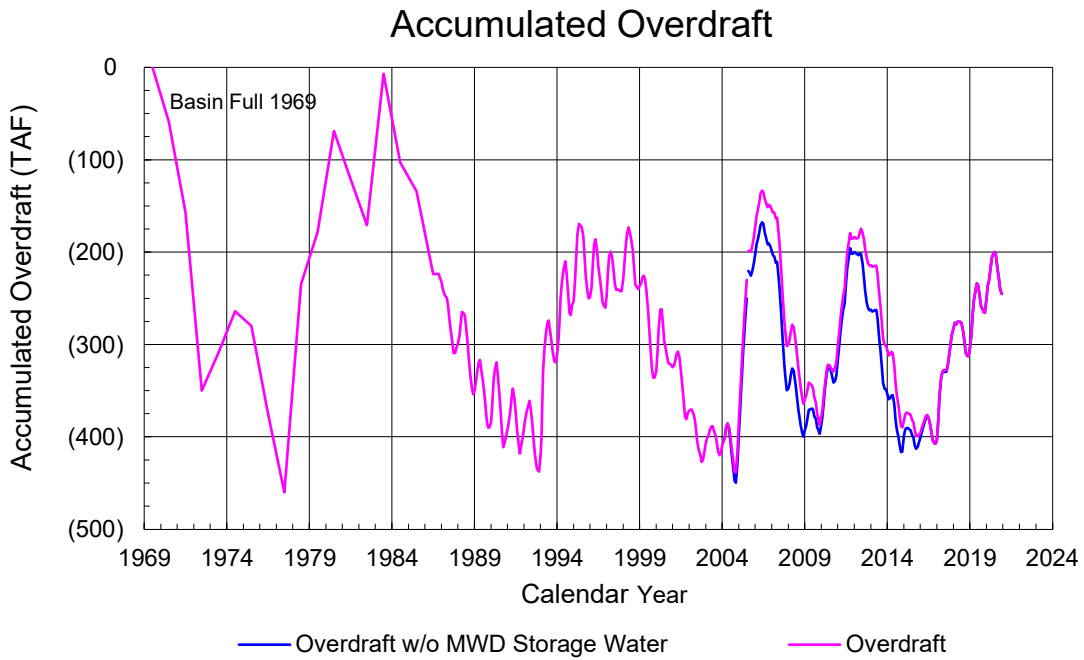
### Orange County Sanitation District Influent Flows Report



### 2019-20 Water Demands/Groundwater Pumping + In Lieu/RA Revenue Report



	Monthly		Accumulated Total for the Year			
	Budget	Actual	Budget	Actual	Difference	Percent
Total Water Demand	32,000	31,071	197,200	186,125	-11,075	94.38%
Total Pumping + In Lieu	25,200	23,337	150,400	130,672	-19,728	86.88%
RA Revenue	\$11,642,400	\$10,781,648	\$69,484,800	\$60,370,669	-\$9,114,131	86.88%



## PRODUCERS WATER USAGE SUMMARY

**November 2020**

(AF except BPP)

WATER AGENCY	Ground-water (1)	In Lieu	Reclaimed Water	Total Import (2)	Total Demand	2020-21 YTD Demand	2019-20 YTD Demand	YTD % Diff Demand	NOV 2020 BPP	2020-21 YTD BPP	2019-20 YTD BPP
Anaheim	1,320	0	0	3,129	4,449	26,971	29,165	92%	29.7%	26.9%	70.8%
Buena Park	1,006	0	0	49	1,055	6,207	6,437	96%	95.3%	87.0%	65.5%
East Orange County	1	0	0	74	75	447	405	110%	1.9%	0.4%	0.7%
Fountain Valley	714	0	77	0	791	4,712	4,913	96%	100.0%	100.0%	100.0%
Fullerton	1,275	0	0	579	1,854	11,490	11,942	96%	68.8%	74.0%	79.8%
Garden Grove	1,525	0	0	251	1,776	10,530	10,456	101%	85.8%	66.3%	59.1%
Golden State	1,370	0	0	500	1,870	11,289	11,042	102%	73.3%	71.2%	80.2%
West OC System	1,142	-	-	3	1,145	6,655	6,493	102%	na	na	na
East OC System	228	-	-	497	725	4,634	4,549	102%	na	na	na
Huntington Beach	1,832	0	0	273	2,105	12,896	12,499	103%	87.0%	77.8%	79.8%
Irvine Ranch	3,779	0	1,230	1	5,010	28,676	28,352	101%	100.0%	99.8%	99.8%
DRWF Clear	2,432	-	-	-	2,432	14,337	8,712	165%	na	na	na
DRWF Color	682	-	-	-	682	3,476	3,580	97%	na	na	na
Laguna Beach	0	0	0	330	330	1,717	1,641	na	0.0%	0.0%	70.0%
La Palma	172	0	0	0	172	939	914	103%	100.0%	100.0%	100.0%
Mesa Water (MW)	1,250	0	50	0	1,301	8,052	8,144	99%	100.0%	100.0%	96.1%
MW Clear	930	-	-	-	930	5,364	5,097	105%	na	na	na
MW Amber	321	-	-	-	321	2,197	1,755	125%	na	na	na
Newport Beach	1,166	0	26	15	1,207	7,275	7,184	101%	98.7%	94.1%	64.0%
Orange	1,881	0	0	182	2,063	13,078	13,308	98%	91.2%	73.0%	77.2%
OCWD (GAP)	118	0	0	0	118	747	660	113%	100.0%	100.0%	100.0%
Santa Ana	2,169	0	16	553	2,738	15,705	15,509	101%	79.7%	74.4%	71.5%
Seal Beach	264	0	0	1	264	1,636	1,589	103%	99.7%	47.3%	44.5%
Serrano	0	0	0	211	211	1,374	1,330	103%	0.0%	0.0%	72.3%
Tustin	883	0	0	2	884	5,215	5,090	102%	99.8%	95.9%	94.6%
Westminster	875	0	0	0	875	4,961	4,936	101%	100.0%	100.0%	73.9%
Yorba Linda	<u>1,380</u>	<u>0</u>	<u>0</u>	<u>174</u>	<u>1,554</u>	<u>10,138</u>	<u>9,643</u>	<u>105%</u>	<u>88.8%</u>	<u>81.4%</u>	<u>75.9%</u>
SUBTOTAL:	22,978	0	1,400	6,324	30,702	184,055	185,159	99%	78.7%	73.3%	78.8%
Other Producers (Est ~3% of Subtotal)	<u>0</u>	<u>0</u>	<u>0</u>	<u>8</u>	<u>8</u>	<u>2,070</u>	<u>3,751</u>	<u>55%</u>			
<b>TOTAL:</b>	<b>22,978</b>	<b>0</b>	<b>1,400</b>	<b>6,332</b>	<b>30,710</b>	<b>186,125</b>	<b>188,910</b>		<b>78.7%</b>	<b>73.3%</b>	<b>78.8%</b>
OCWD (Talbert Barrier)	0		2,407	0	2,407	12,141	12,396				
OCSA (GAP)	na		87	na	87	602	422				

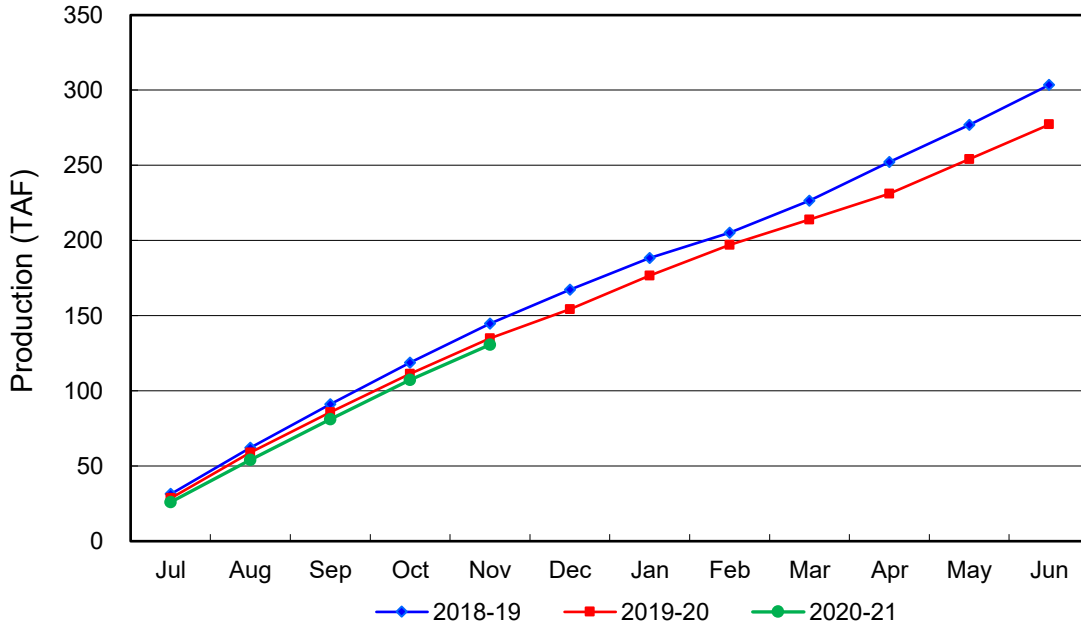
Estimated

(1) Excludes MWD CUP Withdrawals

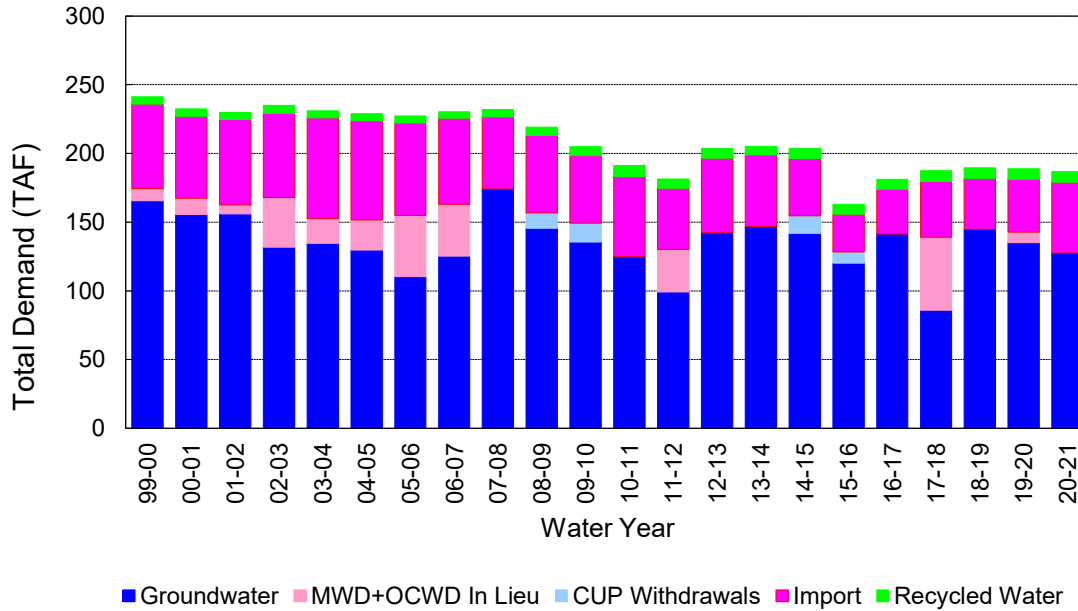
(2) Includes MWD CUP Withdrawals & In Lieu Water

12/10/2020 15:35

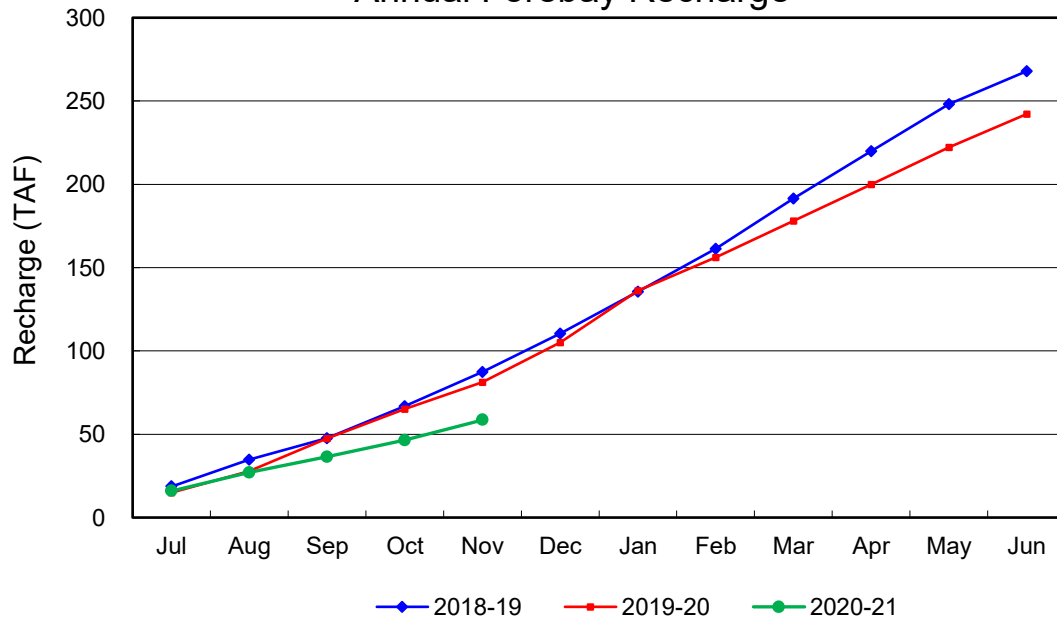
### Annual Groundwater Production



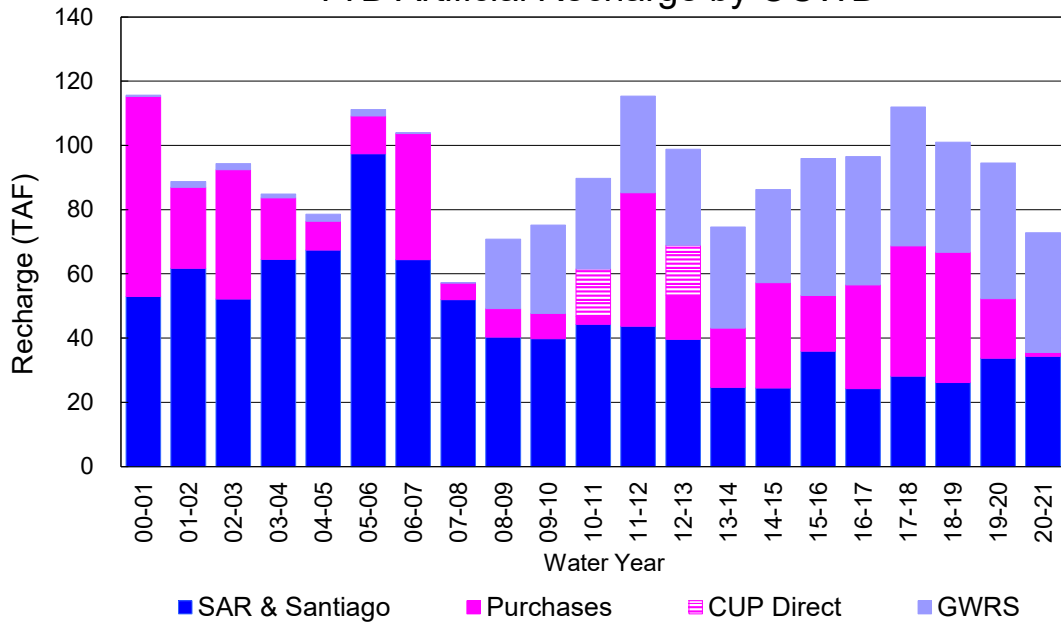
### YTD Total Demand in OCWD



### Annual Forebay Recharge



### YTD Artificial Recharge by OCWD



## RECHARGE AREAS REPORT

November 2020

	Percolation (AF)	Remarks
RIVER SYSTEM	4,589	77 cfs per day average
DESILTING SYSTEM	0	
OFF-RIVER SYSTEM	0	0
WARNER SYSTEM	1,022	SAR
OLIVE BASIN	na	Passive System inflow started 11/4/20
ANAHEIM LAKE	640	0
MINI-ANA LAKE	0	0
MILLER BASIN	115	0
KRAEMER BASIN	52	0
LA PALMA BASIN	5,006	
MIRA LOMA	0	did not use, all GWRS flow to La Palma
LA JOLLA BASIN	0	
PLACENTIA BASIN	na	
RAYMOND BASIN	0	
FIVE COVES BASIN	447	0
BURRIS BASIN	111	
RIVER VIEW BASIN	0	
FLETCHER BASIN	0	
SANTIAGO BASINS	175	
SANTIAGO CREEK	0	
<b>TOTALS</b>	<b>12,157</b>	
<b>5-YR AVERAGE</b>	<b>20,321</b>	

FLOWS TO RECHARGE AREAS (AF)	
Imperial Headgates (estimated)	7,215
GWRS	5,020
OC-28 (MWD)	0
OC-28a (MWD)	0
CB-11	0
CB-18	0
Est'd local Forebay inflow below Imperial	0
Est'd local Santiago inflow (estimated)	31
Irvine lake releases (OC-13 MWD)	0
Villa Park Dam releases (estimated)	0
Precip at Warner Basin (inches)	0.23
Precip direct to open water surfaces	13
<b>TOTAL INFLOW</b>	<b>12,280</b>

LOSSES FROM RECHARGE AREAS (AF)	
Est'd SAR flow past Chapman Ave.	0
Est'd Santiago Cr. flow to SAR	0
Est'd flows past Raymond Basin	0
Calc'd evap (inches) Estimated	3.46
Est'd evaporative losses	202
<b>TOTAL LOSSES</b>	<b>202</b>

STORAGE CHANGES (AF)			
Facility	Begin	End	Net
Deep basins	5,116	5,156	40
Santiago Pits	3,365	3,246	-119
River			0
Off-river			0
Irvine Lake			
<b>TOTAL</b>	<b>8,481</b>	<b>8,402</b>	<b>-79</b>

SUMMARY (AF)	
TOTAL INFLOW	12,280
TOTAL LOSSES	202
STORAGE CHANGE	-79
CALC'D PERCOLATION	12,157

## DEEP BASINS MONTHLY STATUS

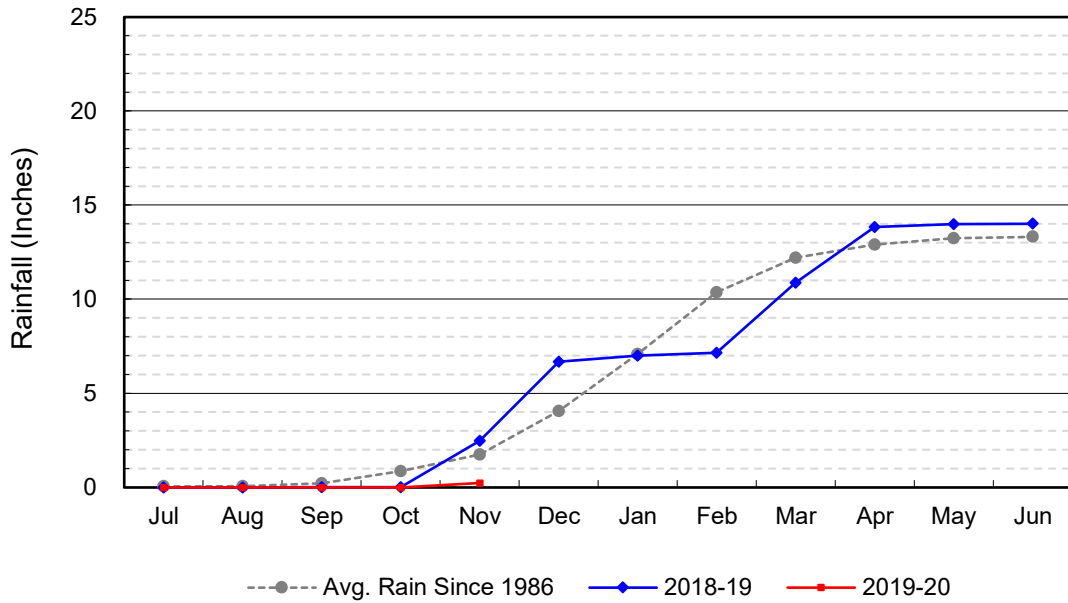
**November 2020**

(values in acre-feet)

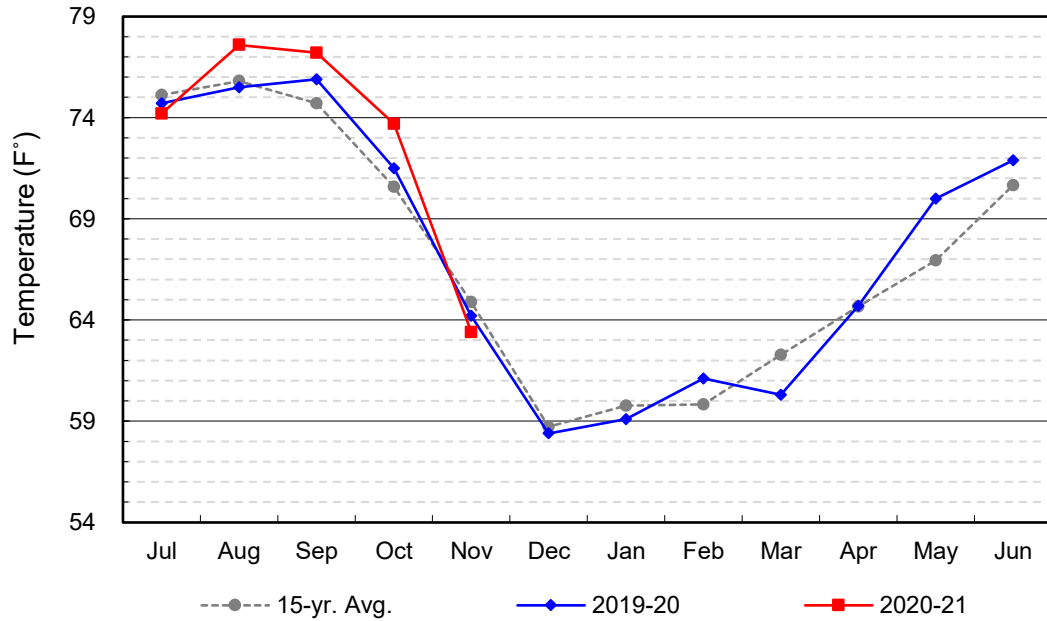
<i>Facility</i>	<i>Storage Start</i>	<i>Storage End</i>	<i>Maximum Storage</i>	<i>Total Perc</i>	<i>Max Perc</i>	<i>Avg Perc</i>	<i>Avg W.S. Elev</i>
Desilting Ponds	200	220	230	na	na	na	na
Fos-Huckleberry	524	520	630	na	na	na	na
Conrock Basin	551	548	660	na	na	na	na
Warner Basins	2,876	2,876	2,810	1,022	na	na	238
Olive Pit	0	6	183	na	na	na	195
Anaheim Lake	0	11	2,300	640	89	21	174
Mini-Anaheim Lk	0	0	21	0	0	0	na
Miller Basin	0	0	340	115	23	4	201
Kraemer Basin	0	0	1,050	52	17	2	165
La Palma Basin	37	49	105	5,006	182	167	215
Mira Loma	0	0	62	0	na	na	na
La Jolla Basin	0	0	36	0	na	na	na
Placentia Basin	0	0	350	na	na	na	na
Raymond Basin	0	0	370	0	na	na	na
Five Coves Basins	0	107	350	447	na	na	na
Burris Pit	928	819	2,670	111	8	4	155
River View Basin	0	0	12	0	na	na	na
Fletcher Basin	0	0	15	0	na	na	na
Santiago (Bond)	2,335	2,212	8,690	175	9	6	206
Santiago (Blu Dia)	1,030	1,034	5,240	-	-	-	-
<b>Totals</b>	<b>8,481</b>	<b>8,402</b>	<b>26,124</b>	<b>7,568</b>			
Prado Dam	2	2	25,000				



### Cumulative Anaheim Field HQ Rainfall



### Temperature at Santa Ana Fire Station



# TALBERT BARRIER MONITORING WELL OCWD-M26

