

WATER RESOURCES SUMMARY

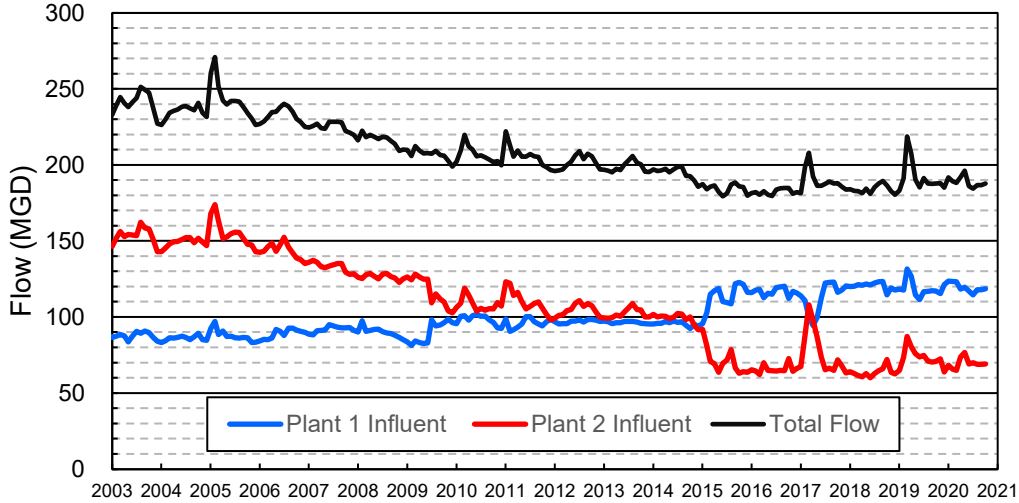
September 2020

INFLOWS & OUTFLOWS (acre-feet)	Total for Month	Year to Date - This Year Last Year	
BASIN SUPPLIES			
Water Purchases from MWD (excludes In Lieu)	0	0	8,245
Water into MWD Storage Account (excludes In Lieu)	0	0	0
SAR & Santiago Creek Flows (accounts for storage to/from recharge facilities)	5,299	23,448	23,271
GWRS Water to Forebay	4,444	14,296	17,116
GWRS Water to Mid-Basin Injection Wells	953	2,867	456
GWRS Water to Talbert Barrier	2,530	7,154	8,022
OC-44 Water to Talbert Barrier	1	10	0
Alamitos Barrier Water	248	679	456
Incidental Recharge (estimated)	1,300	4,600	4,100
Evaporation from Recharge Basins	(345)	(1,184)	(1,184)
River Flow Lost to Ocean	<u>0</u>	<u>0</u>	<u>0</u>
Total Groundwater Recharge	14,430	51,871	60,482
WATER PRODUCTION			
Groundwater Production	26,967	80,995	85,796
MWD Storage Program Withdrawals	<u>0</u>	<u>0</u>	<u>0</u>
Total Groundwater Production	26,967	80,995	85,796
BASIN BALANCE			
Change in Groundwater Storage	(12,537)	(29,125)	(25,313)
Change in Groundwater Storage excluding MWD Stored Water	(12,537)	(29,125)	(25,313)
Accumulated Overdraft	-----	229,124	261,314
Accumulated Overdraft excluding MWD Storage	-----	229,124	261,314
IN LIEU WATER			
OCWD In Lieu Purchases (MWD Cyclic Storage)	0	0	2,675
MWD In Lieu Storage	<u>0</u>	<u>0</u>	<u>0</u>
Total In Lieu	0	0	2,675
OTHER KEY INFORMATION			
1. MWD Water Deliveries to Producers	9,524	32,045	28,486
2. Basin Production Percentage	73.9%	71.7%	77.4%
3. Total Water Demand	38,021	117,805	119,117
4. Total GWRS Production	7,935	24,345	25,614
5. Green Acres Project Water	408	1,322	1,514
6. SAR Water Quality			
- Total Dissolved Solids (TDS) of SAR below Prado Dam (ppm)	712	-----	682
- Total Nitrogen of SAR below Prado Dam (ppm)	5.0	-----	5.1
7. Month-End Water Storage Behind Prado Dam	0	-----	2
8. Month-End Water Storage in Recharge Facilities	8,903	-----	9,036
9. Water Storage Change in Recharge Facilities	(685)	(6,836)	(7,747)
10. Total Artificial Recharge	13,130	47,271	56,382
11. Monthly Mean Temperature at Santa Ana Fire Station (°F)	77.2	-----	75.9
12. Rainfall at FHQ (inches)	0.00	0.00	0.01

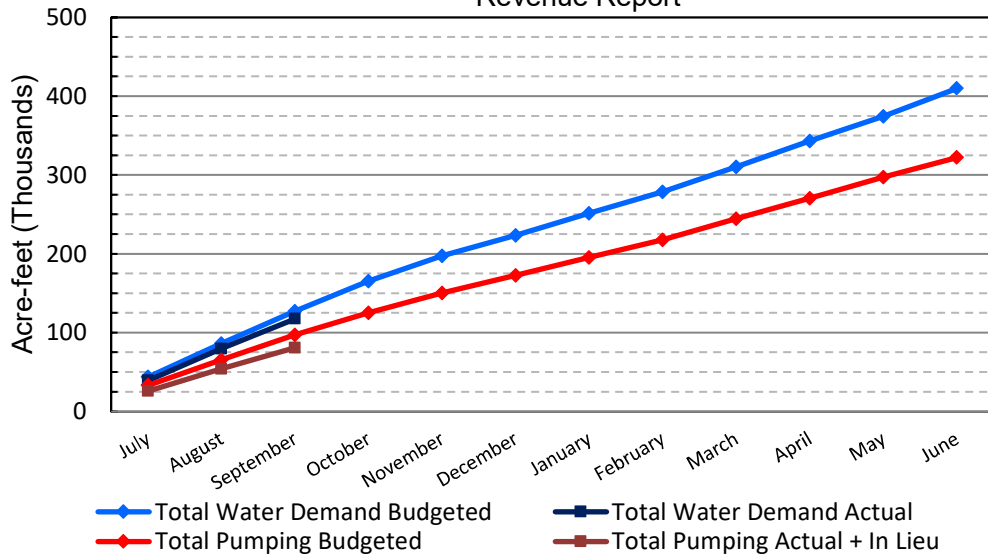
*** Note: Data are preliminary, subject to change

10/15/2020

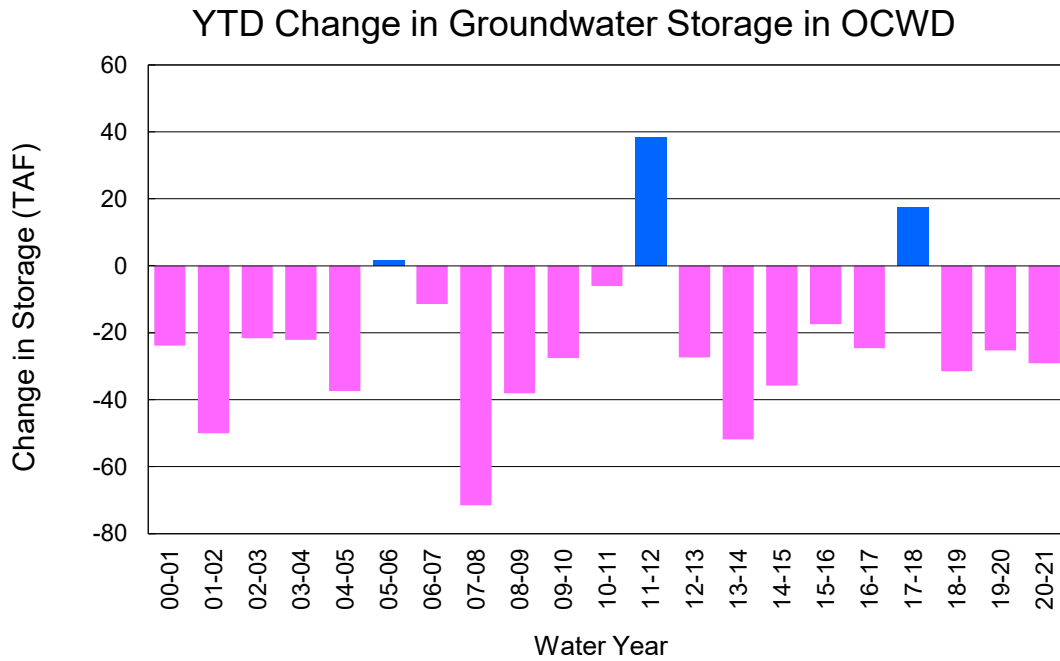
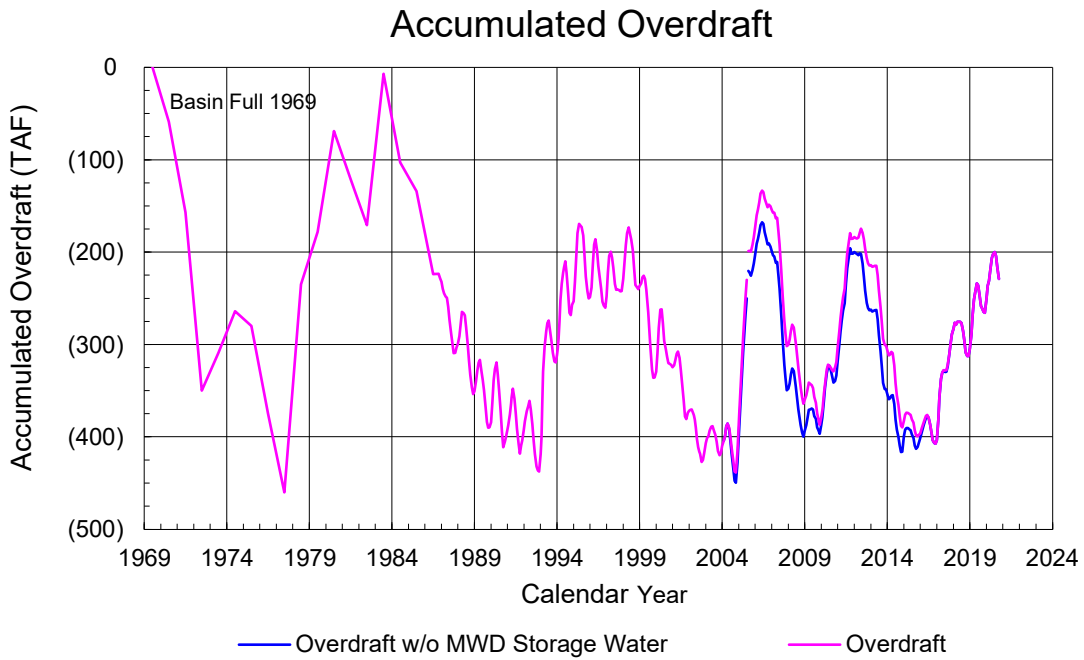
Orange County Sanitation District Influent Flows Report



2019-20 Water Demands/Groundwater Pumping + In Lieu/RA Revenue Report



	Monthly		Accumulated Total for the Year			
	Budget	Actual	Budget	Actual	Difference	Percent
Total Water Demand	41,100	38,021	127,100	117,805	-9,295	92.69%
Total Pumping + In Lieu	31,700	26,967	97,100	80,995	-16,105	83.41%
RA Revenue	\$14,645,400	\$12,458,832	\$44,860,200	\$37,419,840	-\$7,440,360	83.41%



PRODUCERS WATER USAGE SUMMARY

September 2020

(AF except BPP)

WATER AGENCY	Ground-water (1)	In Lieu	Reclaimed Water	Total Import (2)	Total Demand	2020-21 YTD Demand	2019-20 YTD Demand	YTD % Diff Demand	SEPT 2020 BPP	2020-21 YTD BPP	2019-20 YTD BPP
Anaheim	1,535	0	0	4,130	5,665	16,983	18,427	92%	27.1%	26.4%	70.0%
Buena Park	1,073	0	0	178	1,251	3,962	4,051	98%	85.8%	83.6%	58.4%
East Orange County	0	0	0	93	93	282	255	111%	0.0%	0.0%	0.9%
Fountain Valley	844	0	98	0	942	2,967	3,118	95%	100.0%	100.0%	100.0%
Fullerton	1,871	0	0	465	2,335	7,409	7,636	97%	80.1%	78.4%	78.1%
Garden Grove	1,531	0	0	597	2,128	6,688	6,590	101%	71.9%	58.7%	61.2%
Golden State	1,653	0	0	647	2,300	7,202	6,987	103%	71.9%	70.0%	79.2%
West OC System	1,319	-	-	10	1,330	4,195	4,073	103%	na	na	na
East OC System	334	-	-	637	971	3,007	2,913	103%	na	na	na
Huntington Beach	2,054	0	0	657	2,711	8,297	7,907	105%	75.8%	77.7%	70.5%
Irvine Ranch	4,530	0	1,243	7	5,780	17,737	17,387	102%	99.8%	99.7%	99.8%
DRWF Clear	2,987	-	-	-	2,987	8,861	6,611	134%	na	na	na
DRWF Color	668	-	-	-	668	2,097	2,151	97%	na	na	na
Laguna Beach	0	0	0	337	337	1,053	1,021	na	0.0%	0.0%	72.4%
La Palma	188	0	0	0	188	583	581	100%	100.0%	100.0%	100.0%
Mesa Water (MW)	1,515	0	105	0	1,620	5,151	5,163	100%	100.0%	100.0%	93.8%
MW Clear	1,150	-	-	-	1,150	3,326	3,126	106%	na	na	na
MW Amber	365	-	-	-	365	1,480	1,227	121%	na	na	na
Newport Beach	1,313	0	58	23	1,394	4,610	4,608	100%	98.3%	94.3%	81.5%
Orange	1,865	0	0	901	2,767	8,417	8,496	99%	67.4%	67.2%	74.1%
OCWD (GAP)	151	0	0	0	151	505	426	119%	100.0%	100.0%	100.0%
Santa Ana	2,519	0	26	663	3,207	9,866	9,693	102%	79.2%	70.0%	65.0%
Seal Beach	174	0	0	151	325	1,068	1,011	106%	53.5%	19.3%	41.2%
Serrano	0	0	0	289	289	887	854	104%	0.0%	0.0%	78.0%
Tustin	1,045	0	0	15	1,060	3,300	3,243	102%	98.6%	94.4%	93.6%
Westminster	995	0	0	0	995	3,110	3,083	101%	100.0%	100.0%	79.8%
Yorba Linda	<u>1,698</u>	<u>0</u>	<u>0</u>	<u>359</u>	<u>2,057</u>	<u>6,443</u>	<u>6,198</u>	<u>104%</u>	<u>82.5%</u>	<u>81.2%</u>	<u>72.5%</u>
SUBTOTAL:	26,553	0	1,530	9,512	37,594	116,519	116,734	100%	73.9%	71.7%	77.4%
Other Producers (Est ~3% of Subtotal)	<u>0</u>	<u>0</u>	<u>0</u>	<u>12</u>	<u>12</u>	<u>1,286</u>	<u>2,383</u>	<u>54%</u>			
TOTAL:	26,553	0	1,530	9,524	37,606	117,805	119,117		73.9%	71.7%	77.4%
OCWD (Talbert Barrier)	0		2,530	1	2,531	7,164	8,022				
OCSA (GAP)	na		121	na	121	386	276				

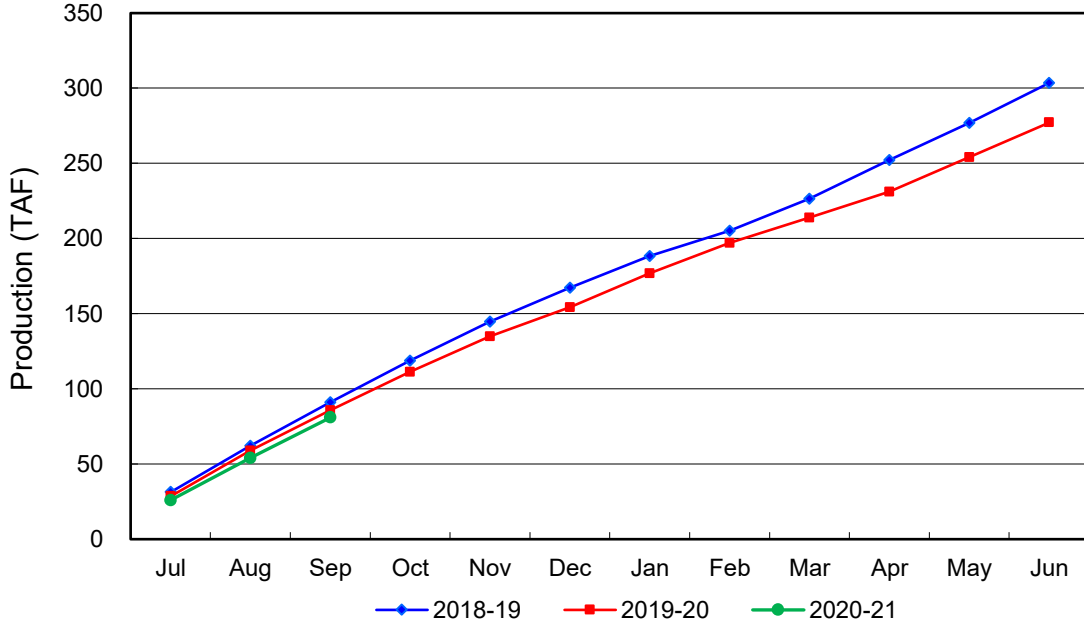
Estimated

(1) Excludes MWD CUP Withdrawals

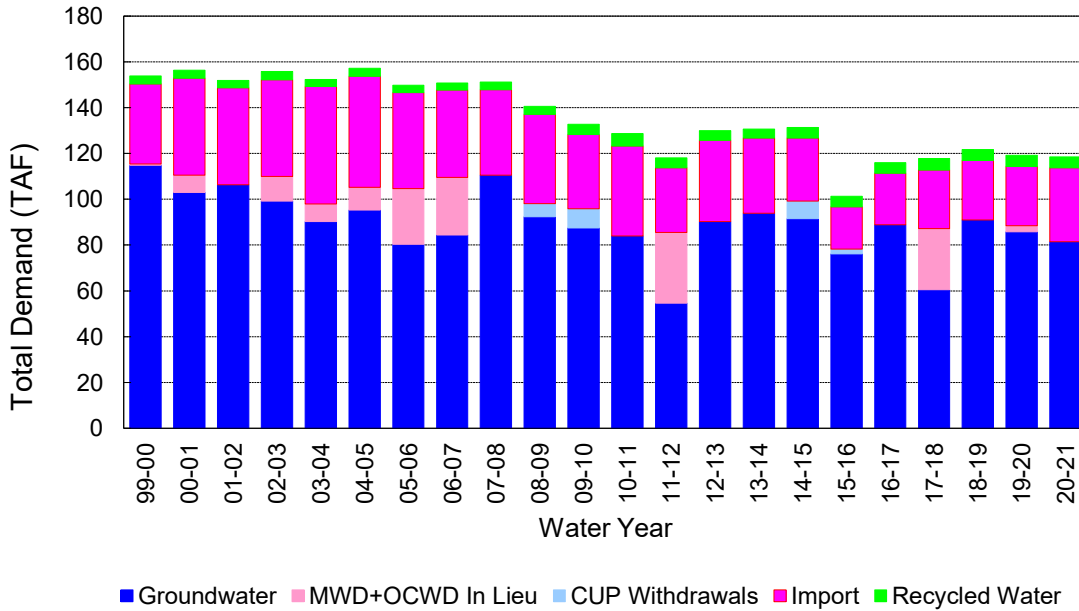
(2) Includes MWD CUP Withdrawals & In Lieu Water

10/15/2020 14:35

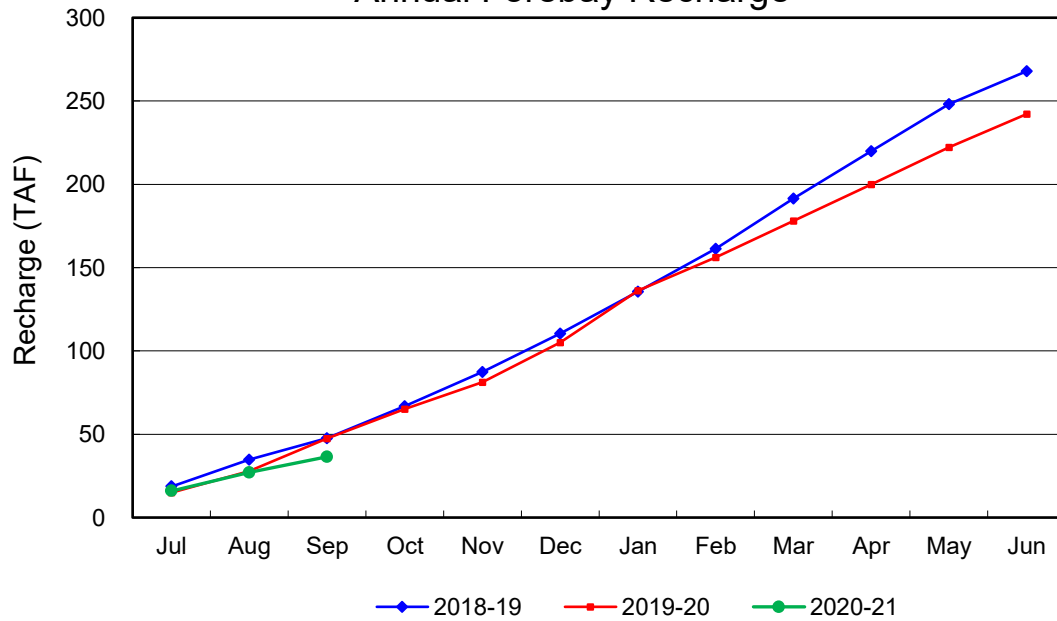
Annual Groundwater Production



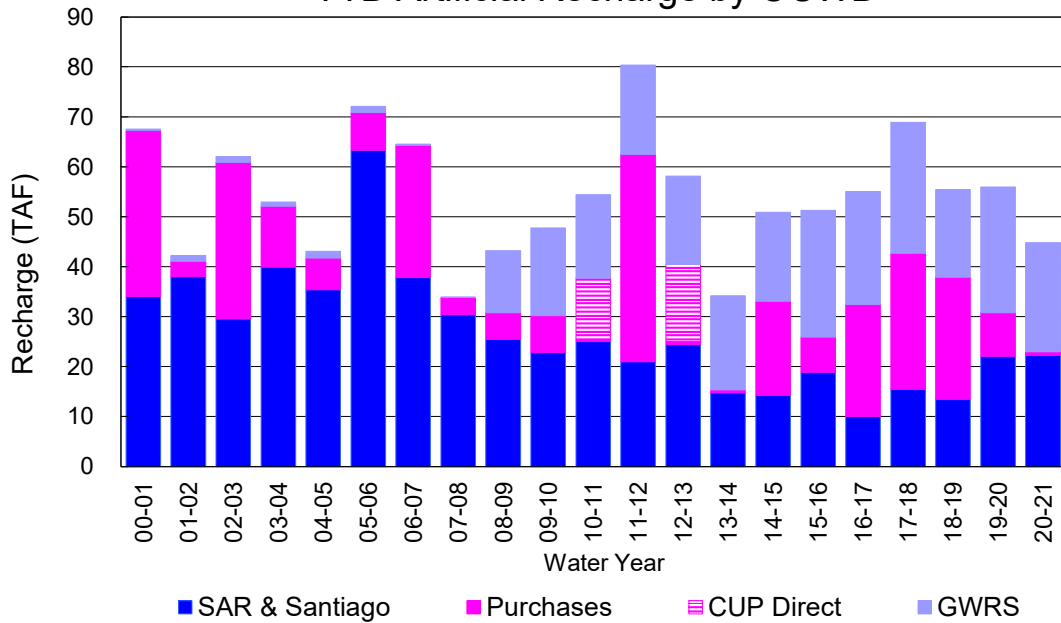
YTD Total Demand in OCWD



Annual Forebay Recharge



YTD Artificial Recharge by OCWD



RECHARGE AREAS REPORT
September 2020

	Percolation (AF)	Remarks
RIVER SYSTEM	3,358	56 cfs per day average
DESILTING SYSTEM	0	
OFF-RIVER SYSTEM	0	0
WARNER SYSTEM	1,027	SAR
OLIVE BASIN	na	cleaned
ANAHEIM LAKE	na	cleaned
MINI-ANA LAKE	na	cleaned
MILLER BASIN	1	0
KRAEMER BASIN	na	0
LA PALMA BASIN	4,414	
MIRA LOMA	na	did not use, all GWRS flow to La Palma
LA JOLLA BASIN	na	
PLACENTIA BASIN	na	
RAYMOND BASIN	na	
FIVE COVES BASIN	na	0
BURRIS BASIN	301	
RIVER VIEW BASIN	na	
FLETCHER BASIN	na	
SANTIAGO BASINS	298	
SANTIAGO CREEK	0	
TOTALS	9,399	
5-YR AVERAGE	20,321	

FLOWS TO RECHARGE AREAS (AF)	
Imperial Headgates (estimated)	4,584
GWRS	4,445
OC-28 (MWD)	0
OC-28a (MWD)	0
CB-11	0
CB-18	0
Est'd local Forebay inflow below Imperial	30
Est'd local Santiago inflow (estimated)	0
Irvine lake releases (OC-13 MWD)	0
Villa Park Dam releases (estimated)	0
Precip at Warner Basin (inches)	0
Precip direct to open water surfaces	0
TOTAL INFLOW	9,059

LOSSES FROM RECHARGE AREAS (AF)	
Est'd SAR flow past Chapman Ave.	0
Est'd Santiago Cr. flow to SAR	0
Est'd flows past Raymond Basin	0
Calc'd evap (inches) Estimated	5.92
Est'd evaporative losses	345
TOTAL LOSSES	345

STORAGE CHANGES (AF)			
Facility	Begin	End	Net
Deep basins	5,634	5,278	-356
Santiago Pits	3,954	3,625	-329
River			0
Off-river			0
Irvine Lake			
TOTAL	9,588	8,903	-685

SUMMARY (AF)	
TOTAL INFLOW	9,059
TOTAL LOSSES	345
STORAGE CHANGE	-685
CALC'D PERCOLATION	9,399

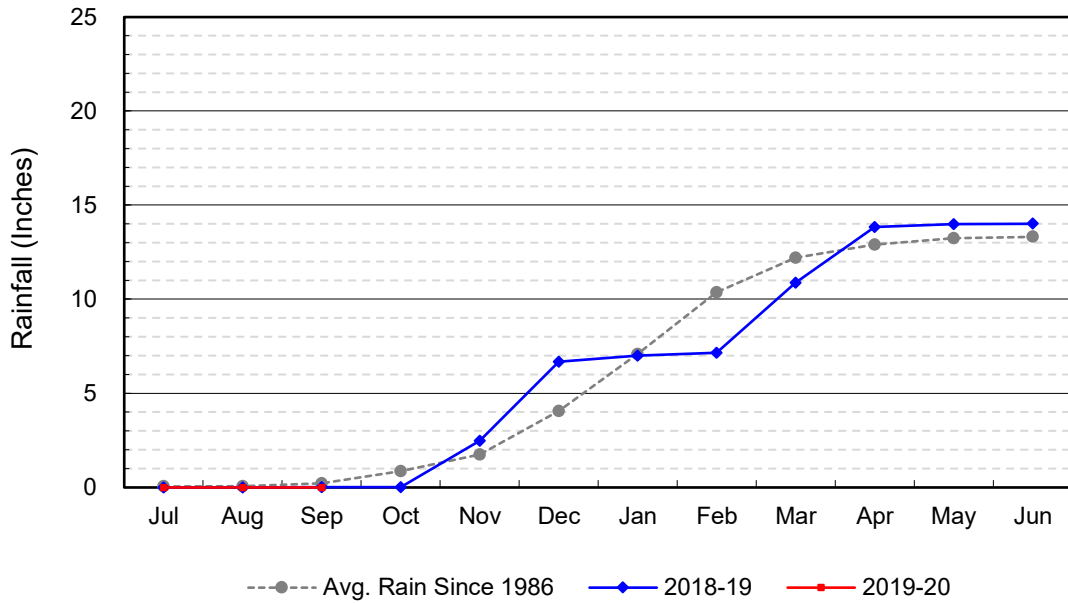
DEEP BASINS MONTHLY STATUS

September 2020

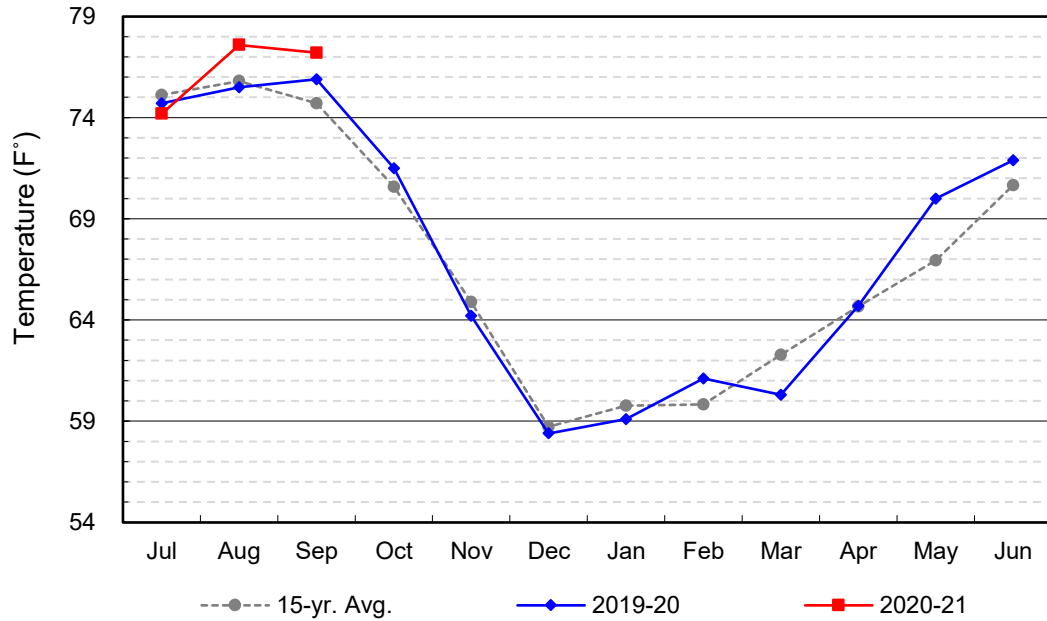
(values in acre-feet)

<i>Facility</i>	<i>Storage Start</i>	<i>Storage End</i>	<i>Maximum Storage</i>	<i>Total Perc</i>	<i>Max Perc</i>	<i>Avg Perc</i>	<i>Avg W.S. Elev</i>
Desilting Ponds	200	200	230	na	na	na	na
Fos-Huckleberry	524	520	630	na	na	na	na
Conrock Basin	554	548	660	na	na	na	na
Warner Basins	2,880	2,843	2,810	1,027	na	na	238
Olive Pit	0	0	183	na	na	na	na
Anaheim Lake	0	0	2,300	na	na	na	na
Mini-Anaheim Lk	0	0	21	na	na	na	na
Miller Basin	1	0	340	1	na	na	na
Kraemer Basin	0	0	1,050	na	na	na	na
La Palma Basin	0	34	105	4,414	168	147	214
Mira Loma	0	0	62	na	na	na	na
La Jolla Basin	3	0	36	na	na	na	na
Placentia Basin	0	0	350	na	na	na	na
Raymond Basin	40	0	370	na	na	na	na
Five Coves Basins	0	0	350	na	na	na	na
Burriss Pit	1,432	1,133	2,670	301	13	10	159
River View Basin	0	0	12	na	na	na	na
Fletcher Basin	0	0	15	na	na	na	na
Santiago (Bond)	2,850	2,545	8,690	298	12	10	213
Santiago (Blu Dia)	1,104	1,080	5,240	-	-	-	-
Totals	9,588	8,903	26,124	6,041			
Prado Dam	0	0	25,000				

Cumulative Anaheim Field HQ Rainfall



Temperature at Santa Ana Fire Station



TALBERT BARRIER MONITORING WELL OCWD-M26

