

WATER RESOURCES SUMMARY

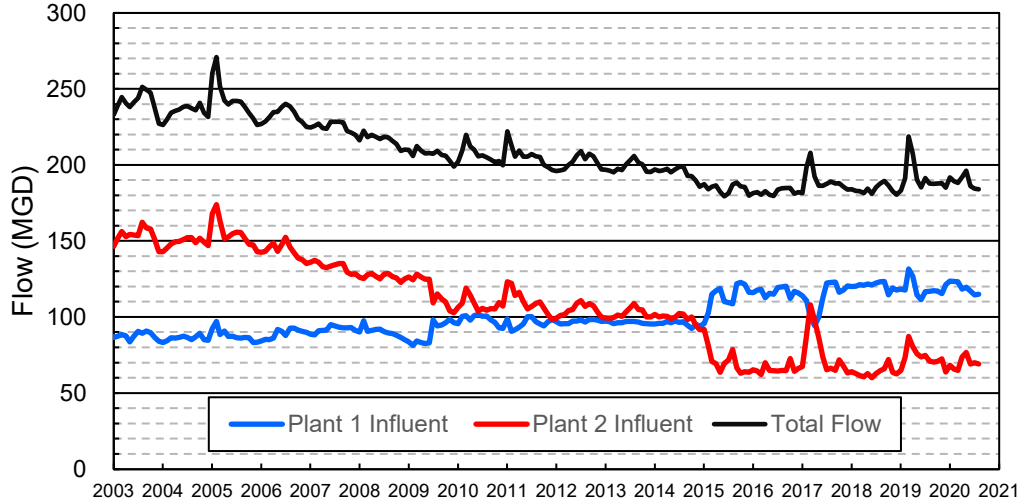
July 2020

INFLOWS & OUTFLOWS (acre-feet)	Total for Month	Year to Date - This Year Last Year	
BASIN SUPPLIES			
Water Purchases from MWD (excludes In Lieu)	0	0	0
Water into MWD Storage Account (excludes In Lieu)	0	0	0
SAR & Santiago Creek Flows (accounts for storage to/from recharge facilities)	11,162	11,162	9,608
GWRS Water to Forebay	5,327	5,327	5,806
GWRS Water to Mid-Basin Injection Wells	1,006	1,006	165
GWRS Water to Talbert Barrier	2,314	2,314	2,649
OC-44 Water to Talbert Barrier	1	1	0
Alamitos Barrier Water	239	239	121
Incidental Recharge (estimated)	2,000	2,000	2,000
Evaporation from Recharge Basins	(418)	(418)	(418)
River Flow Lost to Ocean	<u>0</u>	<u>0</u>	<u>0</u>
Total Groundwater Recharge	21,631	21,631	19,931
WATER PRODUCTION			
Groundwater Production	26,268	26,268	28,633
MWD Storage Program Withdrawals	<u>0</u>	<u>0</u>	<u>0</u>
Total Groundwater Production	26,268	26,268	28,633
BASIN BALANCE			
Change in Groundwater Storage	(4,637)	(4,637)	(8,703)
Change in Groundwater Storage excluding MWD Stored Water	(4,637)	(4,637)	(8,703)
Accumulated Overdraft	-----	187,392	244,703
Accumulated Overdraft excluding MWD Storage	-----	187,392	244,703
IN LIEU WATER			
OCWD In Lieu Purchases (MWD Cyclic Storage)	0	0	0
MWD In Lieu Storage	<u>0</u>	<u>0</u>	<u>0</u>
Total In Lieu	0	0	0
OTHER KEY INFORMATION			
1. MWD Water Deliveries to Producers	11,845	11,845	9,095
2. Basin Production Percentage	68.9%	68.9%	75.9%
3. Total Water Demand	39,664	39,664	39,368
4. Total GWRS Production	8,654	8,654	8,626
5. Green Acres Project Water	387	387	537
6. SAR Water Quality			
- Total Dissolved Solids (TDS) of SAR below Prado Dam (ppm)	760	-----	648
- Total Nitrogen of SAR below Prado Dam (ppm)	4.5	-----	4.8
7. Month-End Water Storage Behind Prado Dam	1	-----	1
8. Month-End Water Storage in Recharge Facilities	11,914	-----	13,101
9. Water Storage Change in Recharge Facilities	(3,825)	(3,825)	(3,682)
10. Total Artificial Recharge	19,631	19,631	17,931
11. Monthly Mean Temperature at Santa Ana Fire Station (°F)	74.2	-----	74.7
12. Rainfall at FHQ (inches)	0.00	0.00	0.00

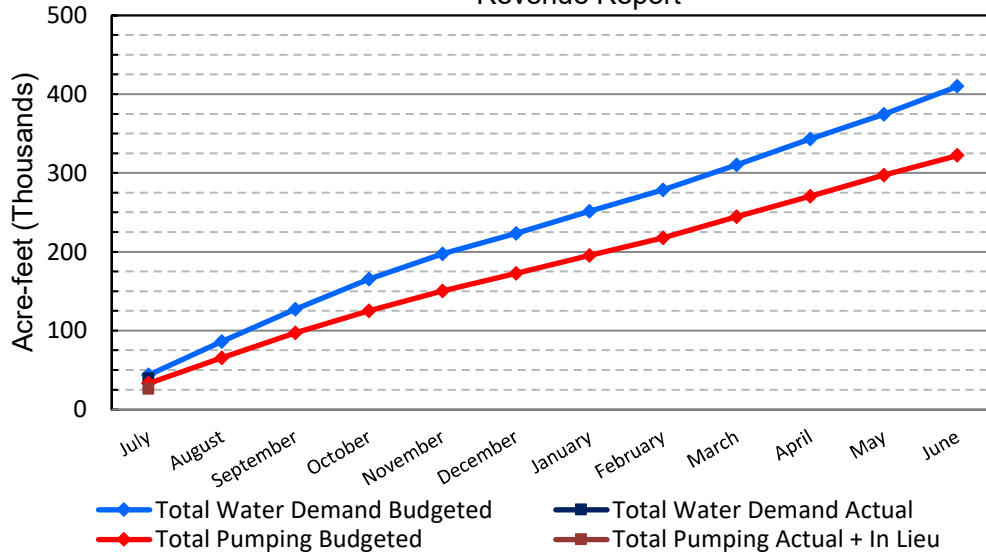
*** Note: Data are preliminary, subject to change

8/13/2020

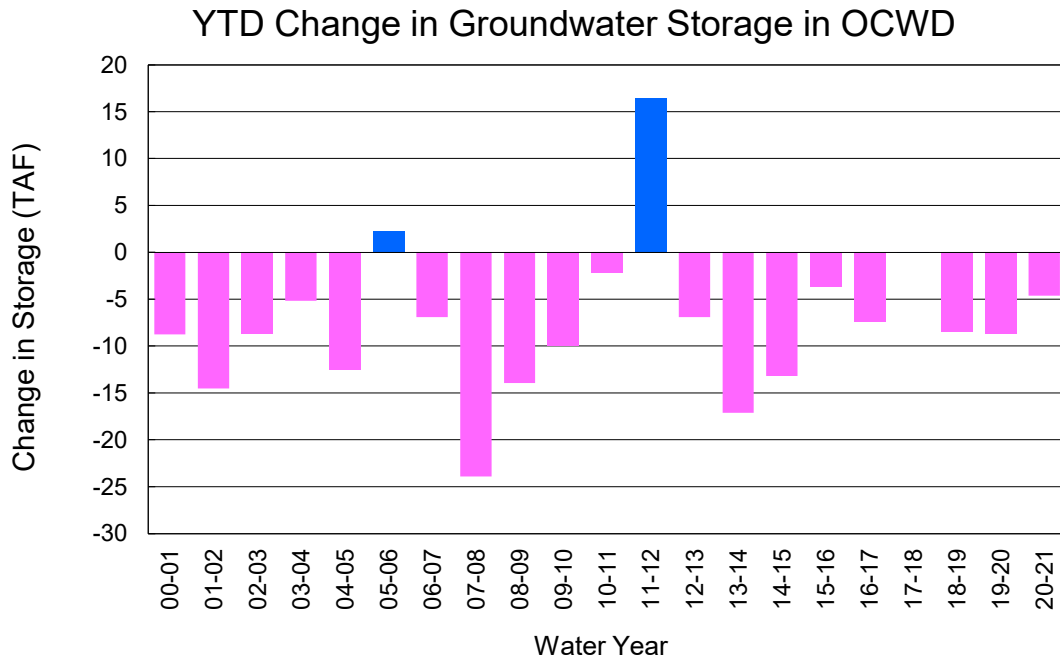
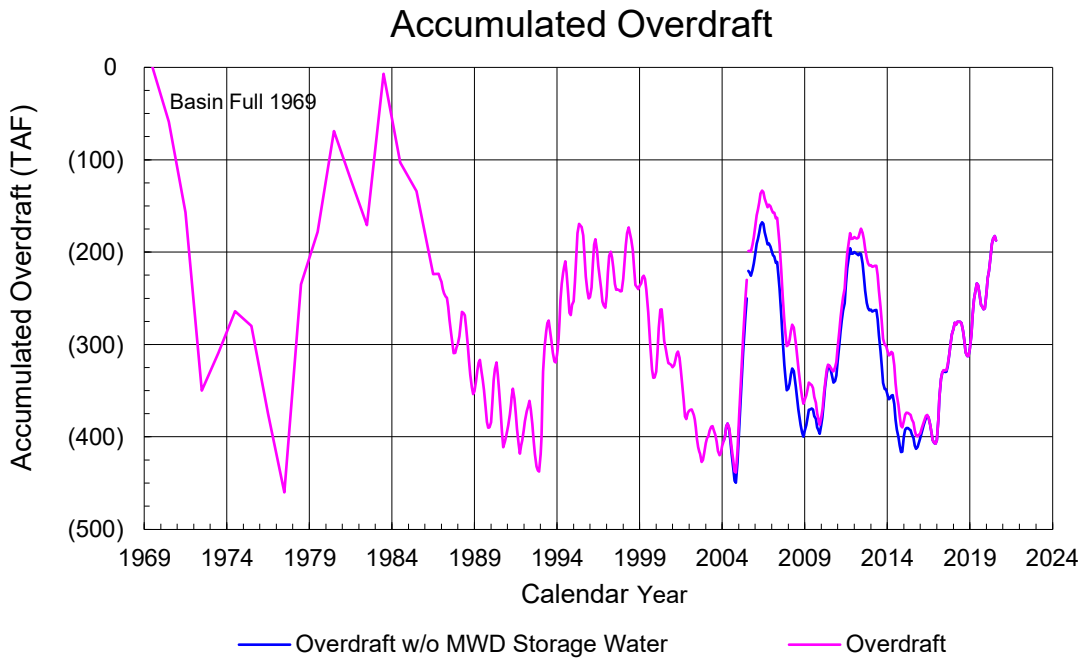
Orange County Sanitation District Influent Flows Report



2019-20 Water Demands/Groundwater Pumping + In Lieu/RA Revenue Report



	Monthly		Accumulated Total for the Year			
	Budget	Actual	Budget	Actual	Difference	Percent
Total Water Demand	43,900	39,664	43,900	39,664	-4,236	90.35%
Total Pumping + In Lieu	33,300	26,268	33,300	26,268	-7,032	78.88%
RA Revenue	\$15,384,600	\$12,135,865	\$15,384,600	\$12,135,865	-\$3,248,735	78.88%



PRODUCERS WATER USAGE SUMMARY

July 2020

(AF except BPP)

WATER AGENCY	Ground-water (1)	In Lieu	Reclaimed Water	Total Import (2)	Total Demand	2020-21 YTD Demand	2019-20 YTD Demand	YTD % Diff Demand	JUL 2020 BPP	2020-21 YTD BPP	2019-20 YTD BPP
Anaheim	1,287	0	0	4,409	5,696	5,696	6,332	90%	22.6%	22.6%	73.0%
Buena Park	1,065	0	0	233	1,299	1,299	1,394	93%	82.0%	82.0%	54.7%
East Orange County	0	0	0	90	90	90	82	110%	0.0%	0.0%	1.0%
Fountain Valley	908	0	59	0	968	968	1,019	95%	100.0%	100.0%	100.0%
Fullerton	1,943	0	0	580	2,523	2,523	2,554	99%	77.0%	77.0%	79.5%
Garden Grove	711	0	0	1,517	2,228	2,228	2,209	101%	31.9%	31.9%	64.5%
Golden State	1,674	0	0	751	2,426	2,426	2,323	104%	69.0%	69.0%	80.9%
West OC System	1,407	-	-	18	1,425	1,425	1,352	105%	na	na	na
East OC System	267	-	-	733	1,001	1,001	971	103%	na	na	na
Huntington Beach	2,251	0	0	538	2,789	2,789	2,666	105%	80.7%	80.7%	70.1%
Irvine Ranch	4,527	0	1,284	21	5,832	5,832	5,237	111%	99.5%	99.5%	99.8%
DRWF Clear	2,809	-	-	-	2,809	2,809	2,239	125%	na	na	na
DRWF Color	723	-	-	-	723	723	729	99%	na	na	na
Laguna Beach	0	0	0	354	354	354	345	na	0.0%	0.0%	72.1%
La Palma	197	0	0	0	197	197	196	101%	100.0%	100.0%	100.0%
Mesa Water (MW)	1,633	0	112	0	1,745	1,745	1,727	101%	100.0%	100.0%	91.6%
MW Clear	1,083	-	-	-	1,083	1,083	1,055	103%	na	na	na
MW Amber	550	-	-	-	550	550	416	132%	na	na	na
Newport Beach	1,418	0	67	97	1,583	1,583	1,605	99%	93.6%	93.6%	78.2%
Orange	1,835	0	0	942	2,778	2,778	2,712	102%	66.1%	66.1%	70.1%
OCWD (GAP)	180	0	0	0	180	180	141	128%	100.0%	100.0%	100.0%
Santa Ana	2,123	0	29	1,130	3,281	3,281	3,280	100%	65.3%	65.3%	65.2%
Seal Beach	16	0	0	349	365	365	333	110%	4.5%	4.5%	26.6%
Serrano	0	0	0	289	289	289	276	105%	0.0%	0.0%	60.6%
Tustin	991	0	0	105	1,096	1,096	1,077	102%	90.4%	90.4%	91.1%
Westminster	1,048	0	0	0	1,048	1,048	1,021	103%	100.0%	100.0%	77.8%
Yorba Linda	<u>1,741</u>	<u>0</u>	<u>0</u>	<u>424</u>	<u>2,165</u>	<u>2,165</u>	<u>2,040</u>	<u>106%</u>	<u>80.4%</u>	<u>80.4%</u>	<u>54.1%</u>
SUBTOTAL:	25,548	0	1,551	11,829	38,929	38,929	38,572	101%	68.9%	68.9%	75.9%
Other Producers (Est ~3% of Subtotal)	<u>0</u>	<u>0</u>	<u>0</u>	<u>15</u>	<u>15</u>	<u>735</u>	<u>796</u>	<u>92%</u>			
TOTAL:	25,548	0	1,551	11,845	38,944	39,664	39,368		68.9%	68.9%	75.9%
OCWD (Talbert Barrier)	0		2,314	1	2,316	2,316	2,649				
OCSA (GAP)	na		120	na	120	120	97				

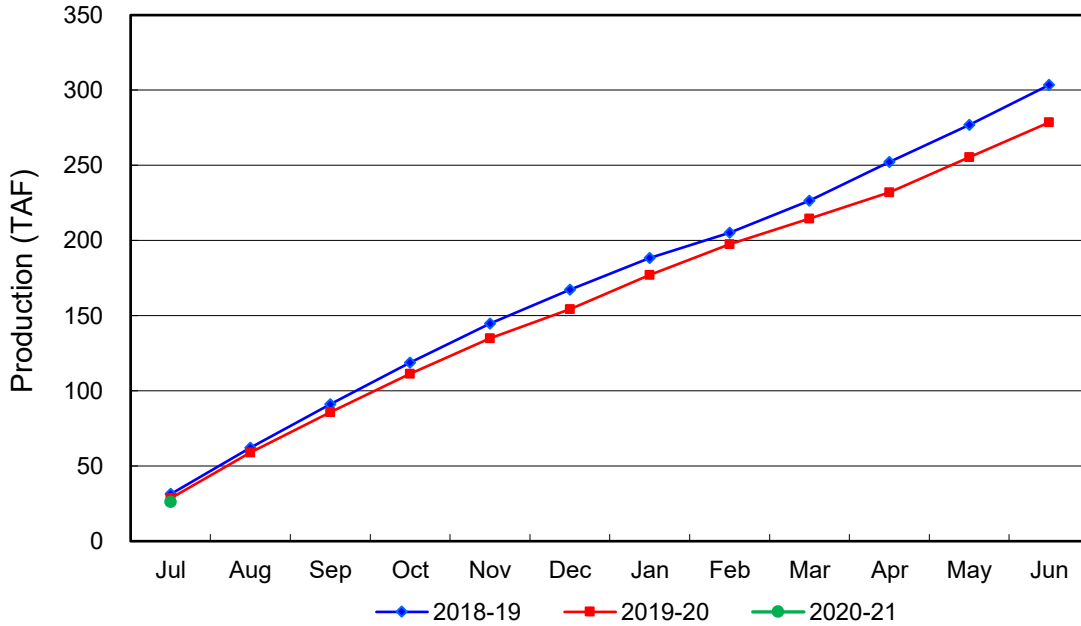
Estimated

(1) Excludes MWD CUP Withdrawals

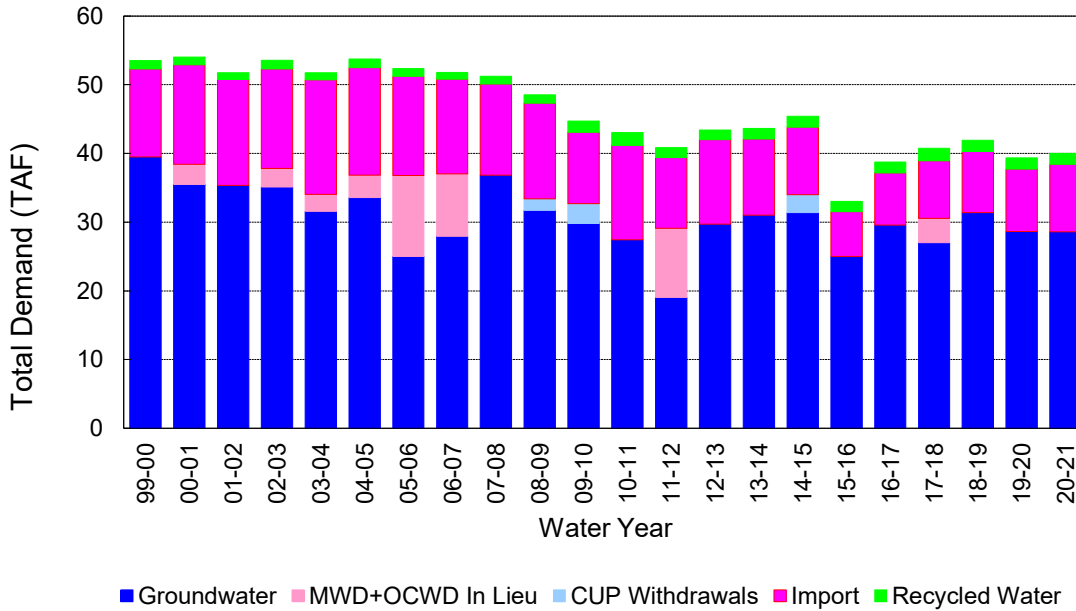
(2) Includes MWD CUP Withdrawals & In Lieu Water

8/13/2020 15:44

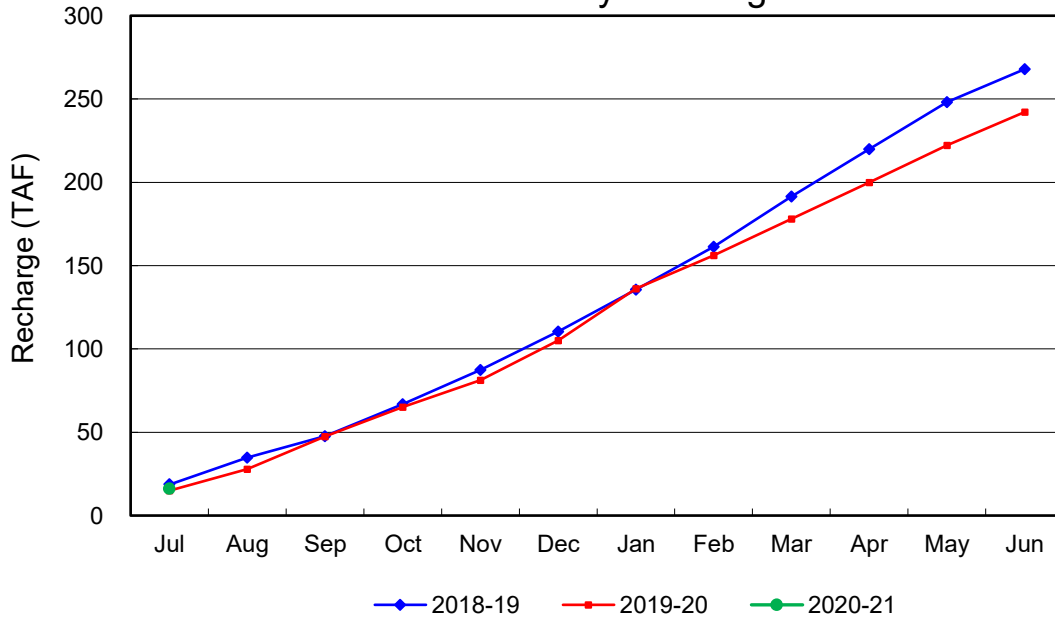
Annual Groundwater Production



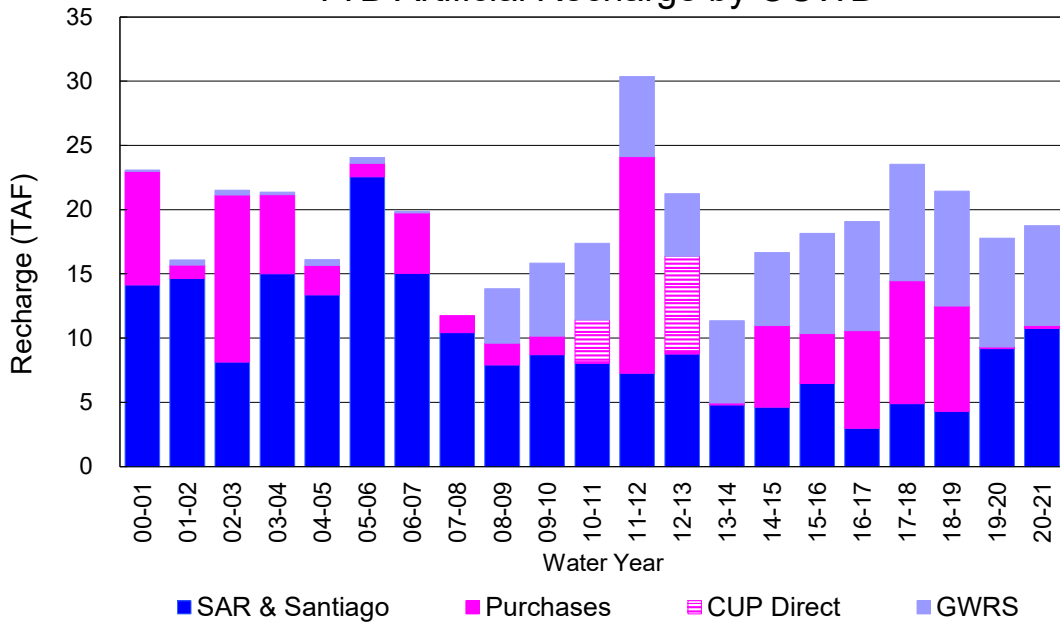
YTD Total Demand in OCWD



Annual Forebay Recharge



YTD Artificial Recharge by OCWD



RECHARGE AREAS REPORT

July 2020

	Percolation (AF)	Remarks
RIVER SYSTEM	5,167	84 cfs per day average
DESILTING SYSTEM	na	
OFF-RIVER SYSTEM	27	cleaned
WARNER SYSTEM	895	SAR
OLIVE BASIN	na	Passive System
ANAHEIM LAKE	589	SAR
MINI-ANA LAKE	57	cleaned
MILLER BASIN	298	cleaned
KRAEMER BASIN	789	SAR
LA PALMA BASIN	5,318	
MIRA LOMA	0	did not use, all GWRS flow to La Palma
LA JOLLA BASIN	366	
PLACENTIA BASIN	na	
RAYMOND BASIN	673	
FIVE COVES BASIN	na	cleaned
BURRIS BASIN	1,181	
RIVER VIEW BASIN	0	
FLETCHER BASIN	0	
SANTIAGO BASINS	713	
SANTIAGO CREEK	0	
TOTALS	16,073	
5-YR AVERAGE	20,321	

FLOWS TO RECHARGE AREAS (AF)	
Imperial Headgates (estimated)	7,276
GWRS	5,329
OC-28 (MWD)	0
OC-28a (MWD)	0
CB-11	0
CB-18	0
Est'd local Forebay inflow below Imperial	0
Est'd local Santiago inflow (estimated)	61
Irvine lake releases (OC-13 MWD)	0
Villa Park Dam releases (estimated)	0
Precip at Warner Basin (inches)	0
Precip direct to open water surfaces	0
TOTAL INFLOW	12,666

LOSSES FROM RECHARGE AREAS (AF)	
Est'd SAR flow past Chapman Ave.	0
Est'd Santiago Cr. flow to SAR	0
Est'd flows past Raymond Basin	0
Calc'd evap (inches) Estimated	7.16
Est'd evaporative losses	418
TOTAL LOSSES	418

STORAGE CHANGES (AF)			
Facility	Begin	End	Net
Deep basins	10,655	7,472	-3,183
Santiago Pits	5,084	4,442	-642
River			0
Off-river			0
Irvine Lake			
TOTAL	15,739	11,914	-3,825

SUMMARY (AF)	
TOTAL INFLOW	12,666
TOTAL LOSSES	418
STORAGE CHANGE	-3,825
CALC'D PERCOLATION	16,073

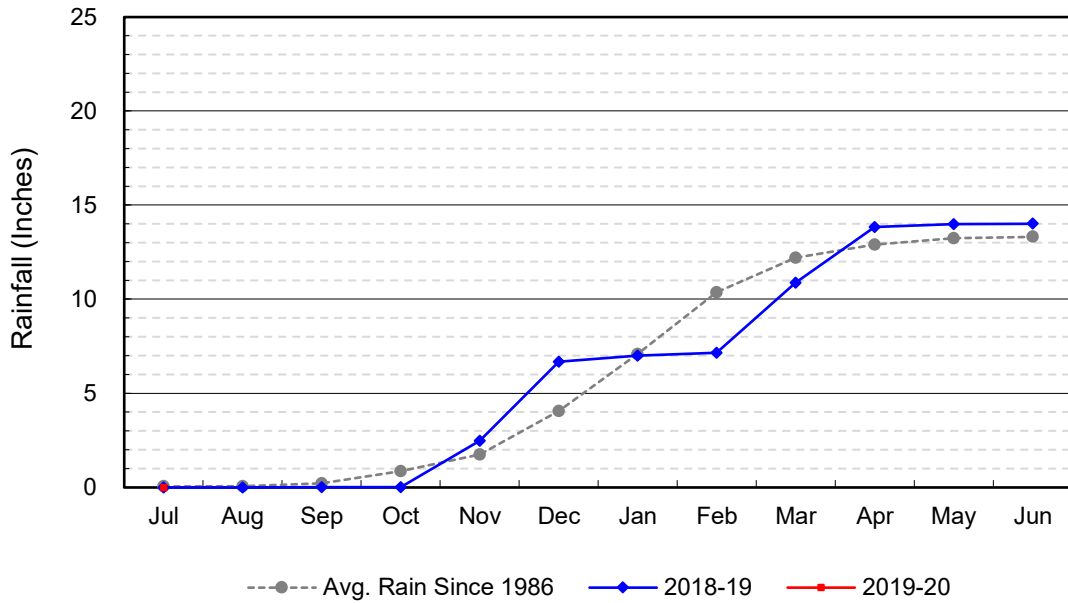
DEEP BASINS MONTHLY STATUS

July 2020

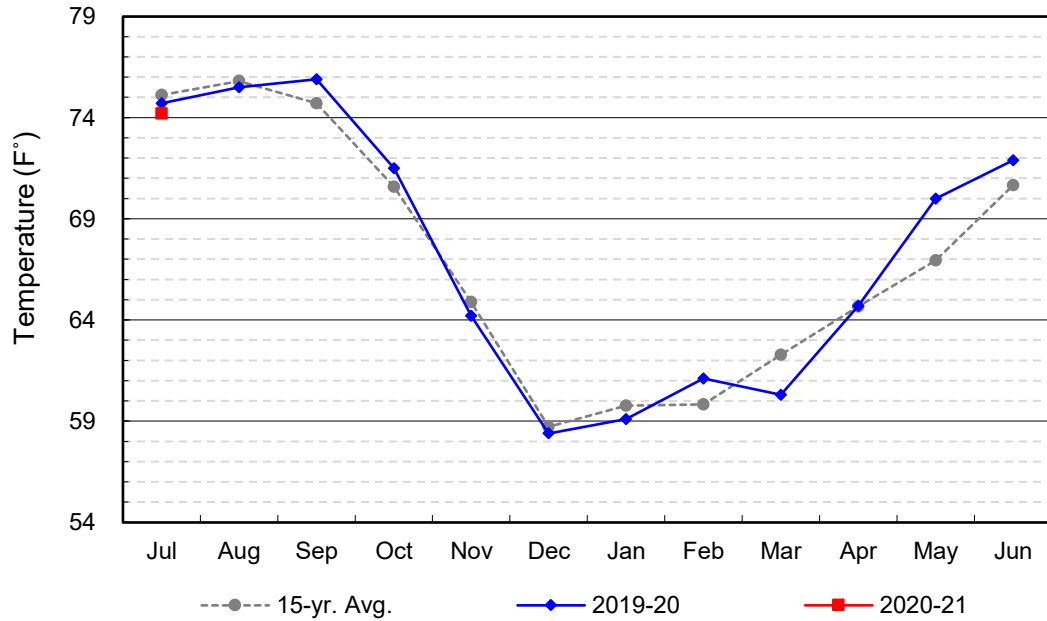
(values in acre-feet)

<i>Facility</i>	<i>Storage Start</i>	<i>Storage End</i>	<i>Maximum Storage</i>	<i>Total Perc</i>	<i>Max Perc</i>	<i>Avg Perc</i>	<i>Avg W.S. Elev</i>
Desilting Ponds	230	200	230	na	na	na	na
Fos-Huckleberry	555	380	630	na	na	na	na
Conrock Basin	586	510	660	na	na	na	na
Warner Basins	2,842	2,816	2,810	895	na	na	238
Olive Pit	80	13	183	na	na	na	212
Anaheim Lake	2,181	485	2,300	589	54	19	209
Mini-Anaheim Lk	6	0	21	57	na	na	221
Miller Basin	342	28	340	298	42	10	205
Kraemer Basin	1,018	782	1,050	789	46	25	214
La Palma Basin	16	25	105	5,318	181	172	214
Mira Loma	0	0	62	0	0	0	210
La Jolla Basin	19	19	36	366	15	12	203
Placentia Basin	0	0	350	na	na	na	na
Raymond Basin	200	200	370	673	na	na	na
Five Coves Basins	213	0	350	na	na	na	na
Burriss Pit	2,366	2,014	2,670	1,181	54	38	170
River View Basin	0	0	12	0	0	0	187
Fletcher Basin	0	0	15	0	0	0	184
Santiago (Bond)	3,683	3,287	8,690	713	68	23	224
Santiago (Blu Dia)	1,401	1,155	5,240	-	-	-	-
Totals	15,739	11,914	26,124	10,879			
Prado Dam	1,482	1	25,000				

Cumulative Anaheim Field HQ Rainfall



Temperature at Santa Ana Fire Station



TALBERT BARRIER MONITORING WELL OCWD-M26

