

WATER RESOURCES SUMMARY

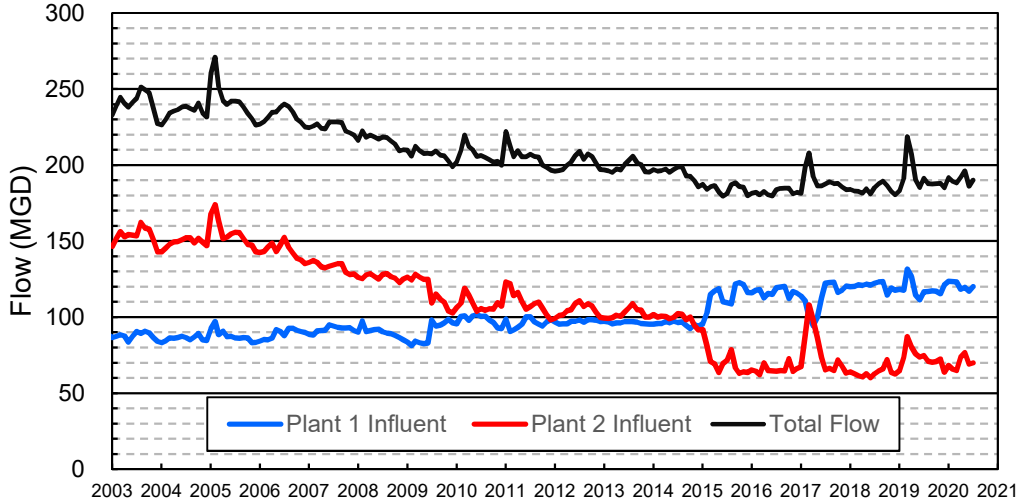
June 2020

INFLOWS & OUTFLOWS (acre-feet)	Total for Month	Year to Date - This Year Last Year	
BASIN SUPPLIES			
Water Purchases from MWD (excludes In Lieu)	0	18,098	40,345
Water into MWD Storage Account (excludes In Lieu)	0	0	0
SAR & Santiago Creek Flows (accounts for storage to/from recharge facilities)	15,204	179,455	240,814
GWRS Water to Forebay	5,258	70,133	65,970
GWRS Water to Mid-Basin Injection Wells	924	3,722	1,826
GWRS Water to Talbert Barrier	2,171	23,777	27,424
OC-44 Water to Talbert Barrier	0	2	21
Alamitos Barrier Water	199	2,075	2,015
Incidental Recharge (estimated)	2,000	42,100	45,236
Evaporation from Recharge Basins	(366)	(3,363)	(3,362)
River Flow Lost to Ocean	<u>0</u>	<u>(22,093)</u>	<u>(75,794)</u>
Total Groundwater Recharge	25,390	313,906	344,496
WATER PRODUCTION			
Groundwater Production	23,744	276,660	303,497
MWD Storage Program Withdrawals	<u>0</u>	<u>0</u>	<u>0</u>
Total Groundwater Production	23,744	276,660	303,497
BASIN BALANCE			
Change in Groundwater Storage	1,647	37,246	41,000
Change in Groundwater Storage excluding MWD Stored Water	1,647	37,246	41,000
Accumulated Overdraft	-----	198,754	236,000
Accumulated Overdraft excluding MWD Storage	-----	198,754	236,000
IN LIEU WATER			
OCWD In Lieu Purchases (MWD Cyclic Storage)	0	7,515	0
MWD In Lieu Storage	<u>0</u>	<u>0</u>	<u>0</u>
Total In Lieu	0	7,515	0
OTHER KEY INFORMATION			
1. MWD Water Deliveries to Producers	11,789	94,389	66,394
2. Basin Production Percentage	66.8%	76.6%	82.1%
3. Total Water Demand	37,124	388,188	384,474
4. Total GWRS Production	8,358	97,719	95,310
5. Green Acres Project Water	513	4,142	3,407
6. SAR Water Quality			
- Total Dissolved Solids (TDS) of SAR below Prado Dam (ppm)	530	-----	634
- Total Nitrogen of SAR below Prado Dam (ppm)	1.2	-----	5.0
7. Month-End Water Storage Behind Prado Dam	1,482	-----	1
8. Month-End Water Storage in Recharge Facilities	15,739	-----	16,783
9. Water Storage Change in Recharge Facilities	(1,137)	(1,044)	4,204
10. Total Artificial Recharge	23,390	271,806	299,260
11. Monthly Mean Temperature at Santa Ana Fire Station (°F)	71.9	-----	69.9
12. Rainfall at FHQ (inches)	0.04	14.02	22.04

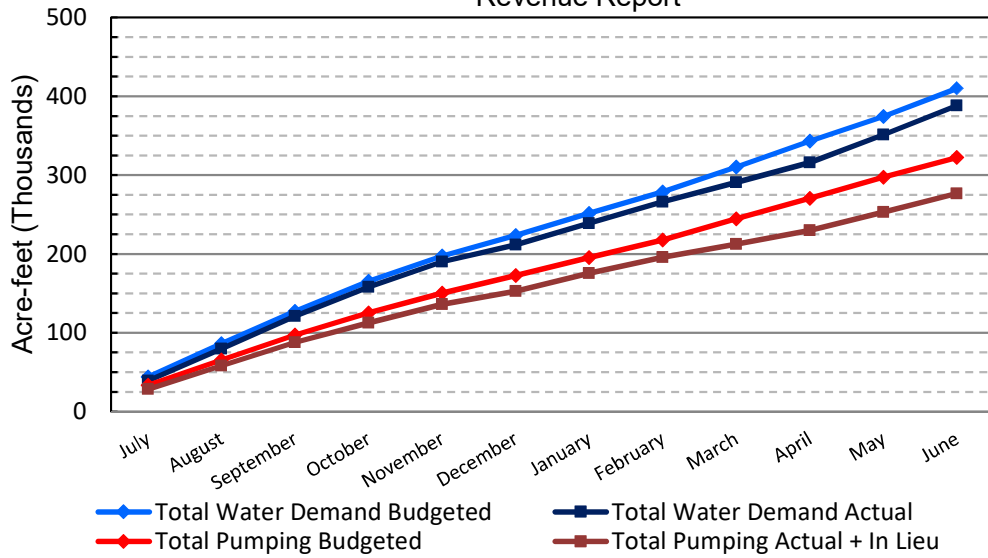
*** Note: Data are preliminary, subject to change

7/9/2020

Orange County Sanitation District Influent Flows Report

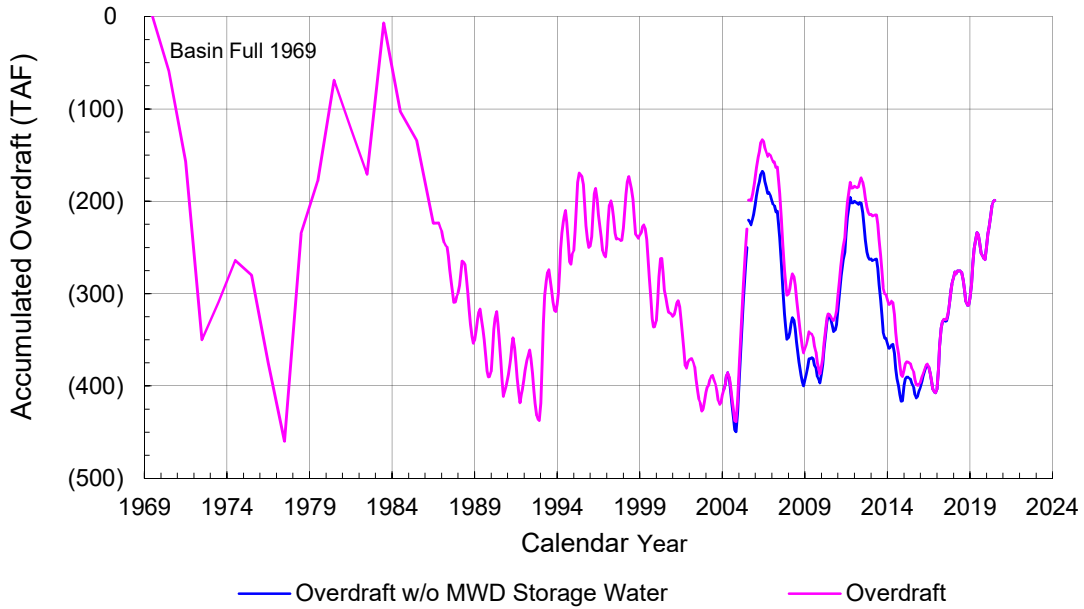


2019-20 Water Demands/Groundwater Pumping + In Lieu/RA Revenue Report

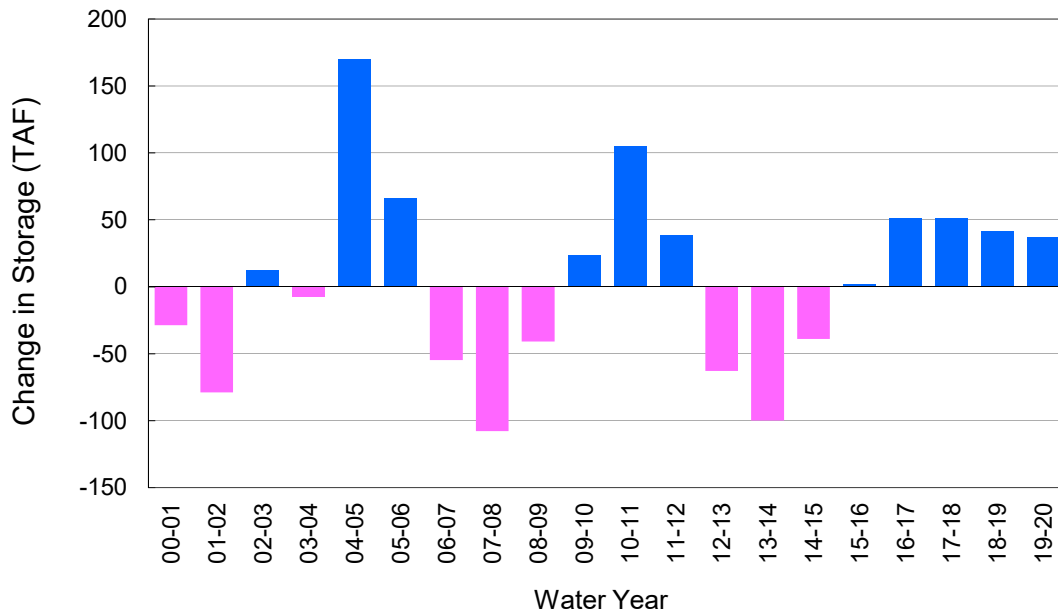


	Monthly		Accumulated Total for the Year			
	Budget	Actual	Budget	Actual	Difference	Percent
Total Water Demand	35,700	37,124	410,000	388,188	-21,812	94.68%
Total Pumping + In Lieu	24,900	23,744	322,300	284,174	-38,126	88.17%
RA Revenue	\$11,503,800	\$10,969,523	\$148,902,600	\$131,288,571	-\$17,614,029	88.17%

Accumulated Overdraft



YTD Change in Groundwater Storage in OCWD



PRODUCERS WATER USAGE SUMMARY

June 2020

(AF except BPP)

WATER AGENCY	Ground-water (1)	In Lieu	Reclaimed Water	Total Import (2)	Total Demand	2019-20 YTD Demand	2018-19 YTD Demand	YTD % Diff Demand	JUN 2020 BPP	2019-20 YTD BPP	2018-19 YTD BPP
Anaheim	1,469	0	0	3,912	5,381	57,121	56,265	102%	27.3%	59.6%	80.5%
Buena Park	1,124	0	0	197	1,321	13,246	12,943	102%	85.1%	79.9%	73.2%
East Orange County	0	0	0	75	76	787	801	98%	0.5%	0.7%	70.6%
Fountain Valley	831	0	79	0	910	9,808	9,211	106%	100.0%	100.0%	100.0%
Fullerton	1,807	0	0	474	2,281	23,796	23,890	100%	79.2%	78.8%	76.9%
Garden Grove	753	0	0	1,313	2,066	21,979	22,341	98%	36.4%	50.2%	84.5%
Golden State	1,698	0	0	553	2,250	22,980	23,078	100%	75.4%	79.8%	81.4%
West OC System	1,329	-	-	2	1,331	13,774	13,590	101%	na	na	na
East OC System	369	-	-	550	919	9,206	9,488	97%	na	na	na
Huntington Beach	2,114	0	0	461	2,575	25,963	26,251	99%	82.1%	80.6%	61.1%
Irvine Ranch	4,653	0	1,225	8	5,885	61,950	59,573	104%	99.8%	99.7%	99.4%
DRWF Clear	3,000	-	-	-	3,000	23,718	27,342	87%	na	na	na
DRWF Color	640	-	-	-	640	8,435	8,429	100%	na	na	na
Laguna Beach	0	0	0	250	250	3,385	3,396	na	0.0%	52.8%	56.9%
La Palma	186	0	0	0	186	1,959	1,853	106%	100.0%	100.0%	100.0%
Mesa Water (MW)	1,524	0	194	0	1,718	17,053	16,870	101%	100.0%	97.5%	84.5%
MW Clear	854	-	-	-	854	11,364	9,813	116%	na	na	na
MW Amber	670	-	-	-	670	3,885	3,760	103%	na	na	na
Newport Beach	1,471	0	65	0	1,536	14,850	14,555	102%	100.0%	70.3%	77.1%
Orange	1,249	0	0	1,180	2,429	26,926	26,386	102%	51.4%	76.6%	82.8%
OCWD (GAP)	177	0	0	0	177	1,586	1,821	87%	100.0%	100.0%	100.0%
Santa Ana	2,145	0	29	931	3,105	33,473	33,472	100%	69.7%	77.0%	76.7%
Seal Beach	94	0	0	252	346	3,282	3,353	98%	27.1%	65.2%	71.7%
Serrano	0	0	0	270	270	2,523	2,554	99%	0.0%	55.0%	75.5%
Tustin	986	0	0	35	1,021	10,447	10,217	102%	96.5%	96.4%	87.9%
Westminster	860	0	0	113	972	10,653	10,672	100%	88.4%	77.0%	77.0%
Yorba Linda	<u>166</u>	<u>0</u>	<u>0</u>	<u>1,749</u>	<u>1,915</u>	<u>19,203</u>	<u>18,036</u>	<u>106%</u>	<u>8.7%</u>	<u>52.6%</u>	<u>82.8%</u>
SUBTOTAL:	23,306	0	1,592	11,774	36,671	382,967	377,540	101%	66.8%	76.6%	82.1%
Other Producers (Est ~3% of Subtotal)	<u>427</u>	<u>0</u>	<u>0</u>	<u>15</u>	<u>442</u>	<u>5,221</u>	<u>6,934</u>	<u>75%</u>			
TOTAL:	23,733	0	1,592	11,789	37,114	388,188	384,474		66.8%	76.6%	82.1%
OCWD (Talbert Barrier)	0		2,171	0	2,171	23,779	27,445				
OCSA (GAP)	na		146	na	146	1,333	926				

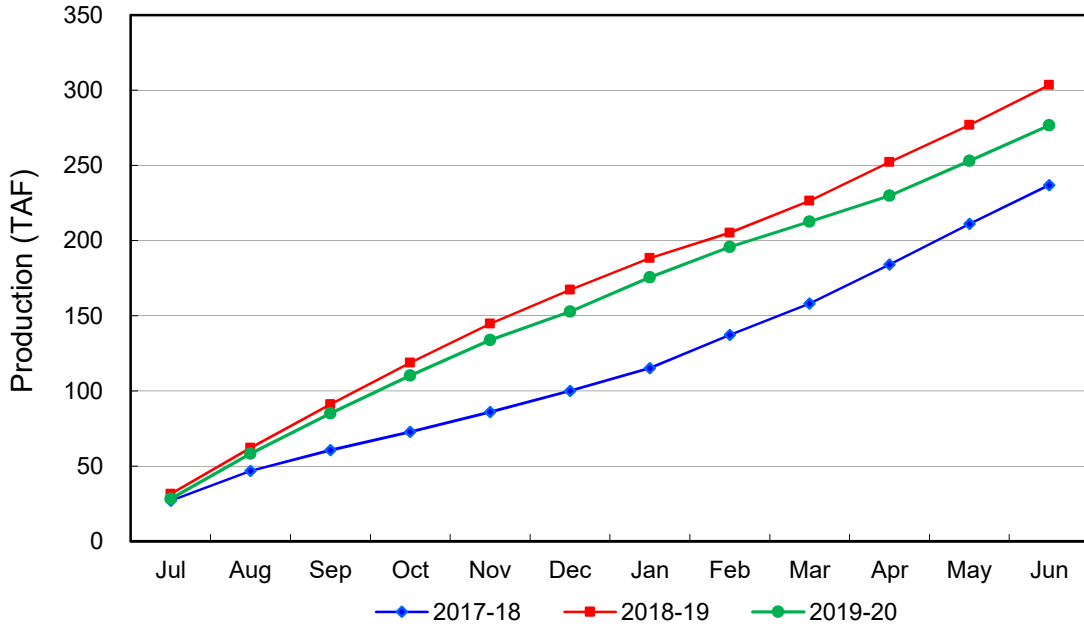
Estimated

(1) Excludes MWD CUP Withdrawals

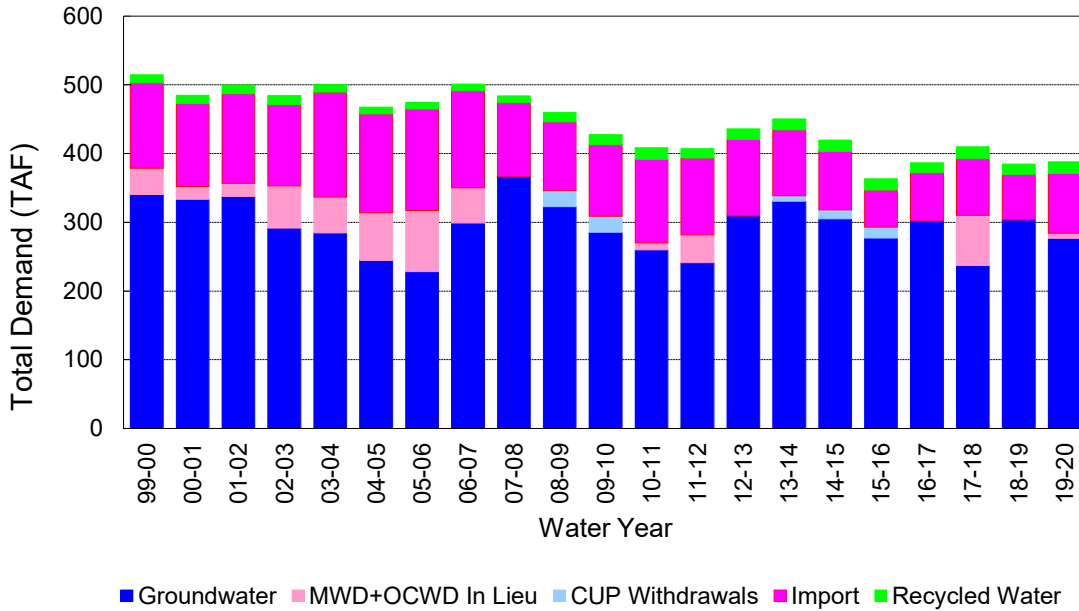
(2) Includes MWD CUP Withdrawals & In Lieu Water

7/9/2020 13:33

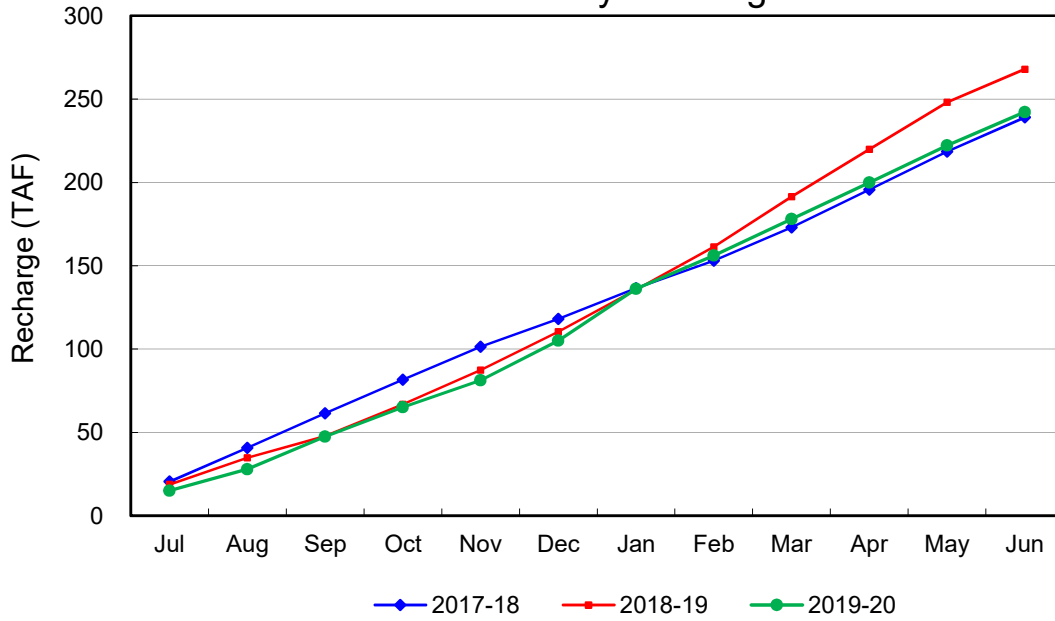
Annual Groundwater Production



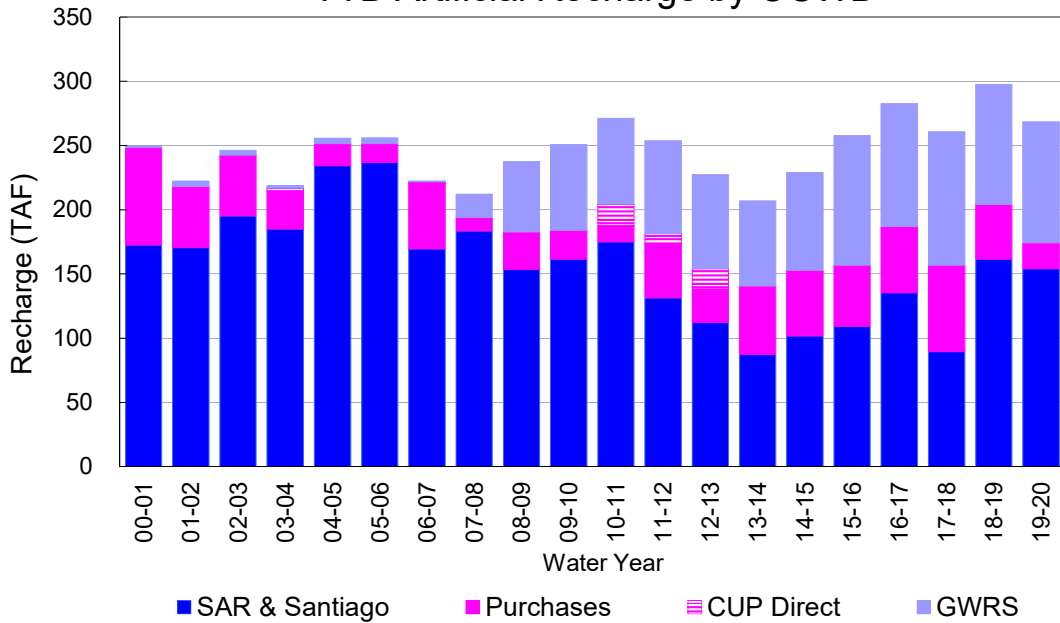
YTD Total Demand in OCWD



Annual Forebay Recharge



YTD Artificial Recharge by OCWD



RECHARGE AREAS REPORT

June 2020

	Percolation (AF)	Remarks
RIVER SYSTEM	6,326	106 cfs per day average
DESILTING SYSTEM	na	
OFF-RIVER SYSTEM	489	SAR
WARNER SYSTEM	978	SAR
OLIVE BASIN	na	Passive System
ANAHEIM LAKE	1,245	SAR
MINI-ANA LAKE	246	SAR
MILLER BASIN	1,256	SAR
KRAEMER BASIN	1,121	SAR
LA PALMA BASIN	5,256	
MIRA LOMA	0	did not use, all GWRS flow to La Palma
LA JOLLA BASIN	402	
PLACENTIA BASIN	na	
RAYMOND BASIN	480	
FIVE COVES BASIN	na	SAR
BURRIS BASIN	1,414	
RIVER VIEW BASIN	0	
FLETCHER BASIN	0	
SANTIAGO BASINS	885	
SANTIAGO CREEK	0	
TOTALS	20,098	
5-YR AVERAGE	20,321	

FLOWS TO RECHARGE AREAS (AF)	
Imperial Headgates (estimated)	13,984
GWRS	5,259
OC-28 (MWD)	0
OC-28a (MWD)	0
CB-11	0
CB-18	0
Est'd local Forebay inflow below Imperial	23
Est'd local Santiago inflow (estimated)	58
Irvine lake releases (OC-13 MWD)	0
Villa Park Dam releases (estimated)	0
Precip at Warner Basin (inches)	0.04
Precip direct to open water surfaces	2
TOTAL INFLOW	19,326

LOSSES FROM RECHARGE AREAS (AF)	
Est'd SAR flow past Chapman Ave.	0
Est'd Santiago Cr. flow to SAR	0
Est'd flows past Raymond Basin	0
Calc'd evap (inches) Estimated	6.27
Est'd evaporative losses	366
TOTAL LOSSES	366

STORAGE CHANGES (AF)			
Facility	Begin	End	Net
Deep basins	10,966	10,655	-311
Santiago Pits	5,910	5,084	-826
River			0
Off-river			0
Irvine Lake			
TOTAL	16,876	15,739	-1,137

SUMMARY (AF)	
TOTAL INFLOW	19,326
TOTAL LOSSES	366
STORAGE CHANGE	-1,137
CALC'D PERCOLATION	20,098

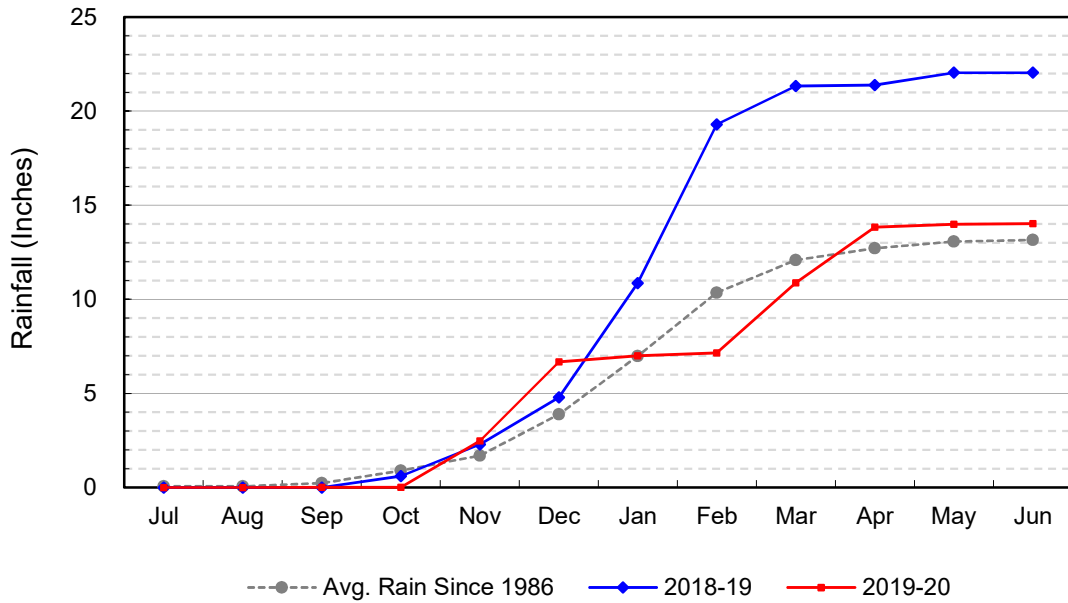
DEEP BASINS MONTHLY STATUS

June 2020

(values in acre-feet)

<i>Facility</i>	<i>Storage Start</i>	<i>Storage End</i>	<i>Maximum Storage</i>	<i>Total Perc</i>	<i>Max Perc</i>	<i>Avg Perc</i>	<i>Avg W.S. Elev</i>
Desilting Ponds	230	230	230	na	na	na	na
Fos-Huckleberry	564	555	630	na	na	na	na
Conrock Basin	597	586	660	na	na	na	na
Warner Basins	2,899	2,842	2,810	978	na	na	238
Olive Pit	84	80	183	na	na	na	220
Anaheim Lake	2,271	2,181	2,300	1,245	60	41	222
Mini-Anaheim Lk	12	6	21	246	na	na	223
Miller Basin	371	342	340	1,256	77	42	219
Kraemer Basin	1,026	1,018	1,050	1,121	60	37	216
La Palma Basin	9	16	105	5,256	184	175	213
Mira Loma	0	0	62	0	0	0	210
La Jolla Basin	18	19	36	402	17	13	203
Placentia Basin	0	0	350	na	na	na	na
Raymond Basin	200	200	370	480	na	na	na
Five Coves Basins	213	213	350	na	na	na	na
Burriss Pit	2,472	2,366	2,670	1,414	52	47	171
River View Basin	0	0	12	0	0	0	na
Fletcher Basin	0	0	15	0	0	0	na
Santiago (Bond)	4,182	3,683	8,690	885	44	29	230
Santiago (Blu Dia)	1,728	1,401	5,240	-	-	-	-
Totals	16,876	15,739	26,124	13,283			
Prado Dam	9,032	1,482	25,000				

Cumulative Anaheim Field HQ Rainfall



Temperature at Santa Ana Fire Station

