

# WATER RESOURCES SUMMARY

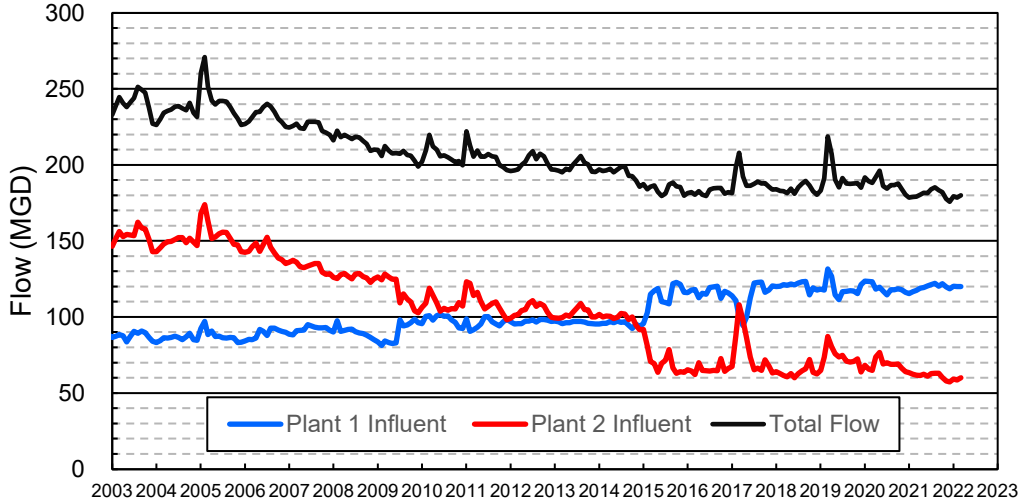
February 2022

INFLOWS & OUTFLOWS (acre-feet)	Total for Month	Year to Date - This Year    Last Year	
<b>BASIN SUPPLIES</b>			
Water Purchases from MWD (excludes In Lieu)	0	20,003	0
Water into MWD Storage Account (excludes In Lieu)	0	0	0
SAR & Santiago Creek Flows (accounts for storage to/from recharge facilities)	13,493	93,034	72,944
GWRS Water to Forebay	5,404	39,358	39,998
GWRS Water to Mid-Basin Injection Wells	624	5,238	7,338
GWRS Water to Talbert Barrier	1,733	16,644	18,306
OC-44 and F. Valley Water to Talbert Barrier	0	6	15
Alamitos Barrier Water	245	2,041	1,924
Incidental Recharge (estimated)	4,000	21,800	13,400
Evaporation from Recharge Basins	(167)	(1,619)	(2,192)
River Flow Lost to Ocean	<u>0</u>	<u>(16,269)</u>	<u>(1,039)</u>
Total Groundwater Recharge	25,331	180,235	150,695
<b>WATER PRODUCTION</b>			
Groundwater Production	18,533	167,977	191,518
MWD Storage Program Withdrawals	<u>0</u>	<u>0</u>	<u>0</u>
Total Groundwater Production	18,533	167,977	191,518
<b>BASIN BALANCE</b>			
Change in Groundwater Storage	6,798	12,258	(40,823)
Change in Groundwater Storage excluding MWD Stored Water	6,798	12,258	(40,823)
Accumulated Overdraft	-----	235,744	240,826
Accumulated Overdraft excluding MWD Storage	-----	235,744	240,825
<b>IN LIEU WATER</b>			
OCWD In Lieu Purchases (MWD Cyclic Storage)	0	0	0
MWD In Lieu Storage	<u>0</u>	<u>0</u>	<u>0</u>
Total In Lieu	0	0	0
<b>OTHER KEY INFORMATION</b>			
1. MWD Water Deliveries to Producers	7,033	79,629	65,055
2. Basin Production Percentage	72.5%	67.8%	74.6%
3. Total Water Demand	26,931	259,902	268,571
4. Total GWRS Production	7,765	61,277	65,689
5. Green Acres Project Water	202	2,391	2,818
6. SAR Water Quality			
- Total Dissolved Solids (TDS) of SAR below Prado Dam (ppm)	728	-----	579
- Total Nitrogen of SAR below Prado Dam (ppm)	5.2	-----	2.4
7. Month-End Water Storage Behind Prado Dam	5	-----	5,737
8. Month-End Water Storage in Recharge Facilities	16,764	-----	12,387
9. Water Storage Change in Recharge Facilities	(4,795)	8,104	(3,352)
10. Total Artificial Recharge	21,331	158,435	137,293
11. Monthly Mean Temperature at Santa Ana Fire Station (°F)	62.8	-----	60.3
12. Rainfall at FHQ (inches)	0.20	5.90	4.43

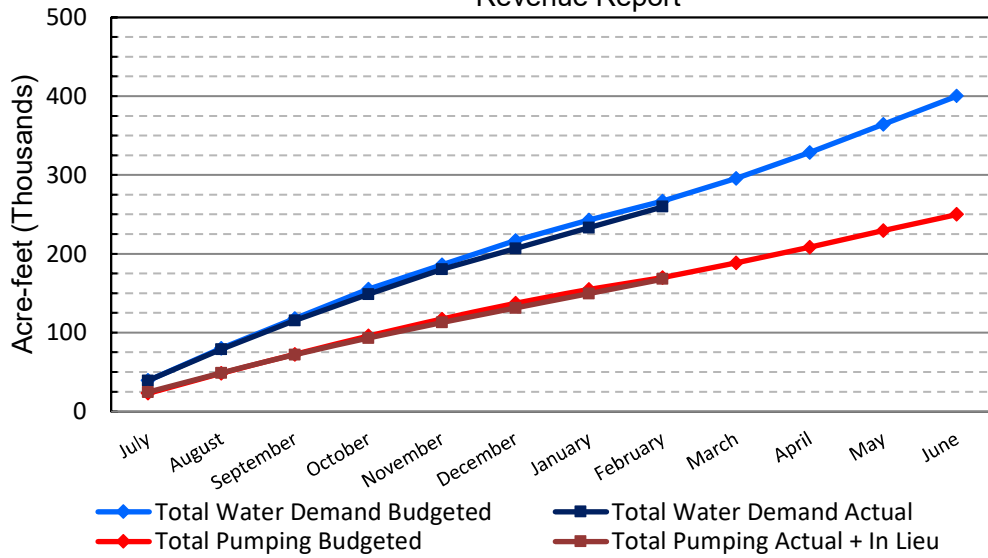
\*\*\* Note: Data are preliminary, subject to change

3/10/2022

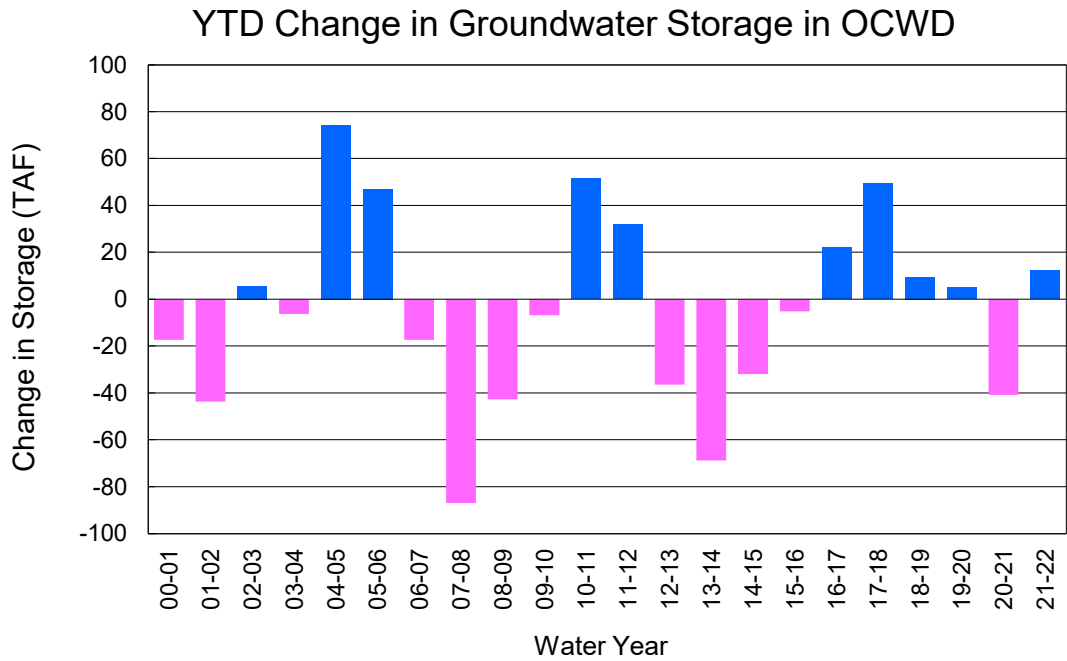
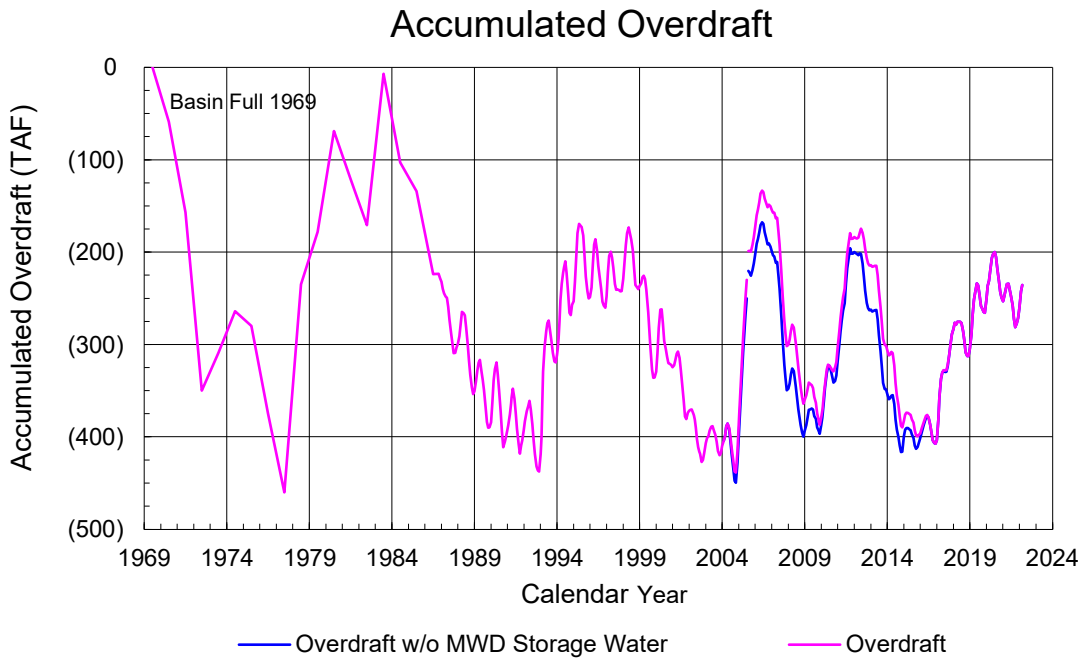
### Orange County Sanitation District Influent Flows Report



### 2021-22 Water Demands/Groundwater Pumping + In Lieu/RA Revenue Report



	Monthly		Accumulated Total for the Year			
	Budget	Actual	Budget	Actual	Difference	Percent
Total Water Demand	23,800	26,931	266,800	259,902	-6,898	97.41%
Total Pumping + In Lieu	15,100	18,533	169,900	167,977	-1,923	98.87%
RA Revenue	\$6,976,200	\$8,562,240	\$78,493,800	\$77,605,309	-\$888,491	98.87%



## PRODUCERS WATER USAGE SUMMARY

**February 2022**

(AF except BPP)

WATER AGENCY	Ground-water (1)	In Lieu	Reclaimed Water	Total Import (2)	Total Demand	2021-22 YTD Demand	2020-21 YTD Demand	YTD % Diff Demand	FEB 2022 BPP	2021-22 YTD BPP	2020-21 YTD BPP
Anaheim	1,041	0	0	2,891	3,932	39,476	38,748	102%	26.5%	29.8%	26.3%
Buena Park	852	0	0	29	881	8,695	8,809	99%	96.8%	84.2%	88.1%
East Orange County	1	0	0	62	63	608	695	87%	1.0%	0.4%	10.0%
Fountain Valley	618	0	82	0	700	6,740	6,929	97%	100.0%	100.0%	100.0%
Fullerton	1,232	0	0	383	1,615	15,743	16,260	97%	76.3%	75.8%	72.4%
Garden Grove	1,230	0	0	295	1,525	14,632	15,364	95%	80.7%	84.6%	72.8%
Golden State	1,056	0	0	562	1,617	15,368	16,230	95%	65.3%	62.5%	71.8%
West OC System	978	-	-	0	978	9,300	9,701	96%	na	na	na
East OC System	77	-	-	562	639	6,069	6,529	93%	na	na	na
Huntington Beach	1,478	0	0	238	1,716	16,976	18,524	92%	86.1%	84.1%	82.7%
Irvine Ranch	3,323	0	1,181	3	4,506	41,746	40,983	102%	99.9%	98.8%	99.5%
DRWF Clear	2,199	-	-	-	2,199	18,961	18,905	100%	na	na	na
DRWF Color	186	-	-	-	186	4,244	5,565	76%	na	na	na
Laguna Beach	0	0	0	210	210	2,142	2,418	na	0.0%	0.0%	15.1%
La Palma	121	0	0	0	121	1,153	1,334	86%	100.0%	94.7%	100.0%
Mesa Water (MW)	1,176	0	59	0	1,235	11,489	11,564	99%	100.0%	98.1%	100.0%
MW Clear	1,067	-	-	-	1,067	8,745	8,561	102%	na	na	na
MW Amber	109	-	-	-	109	1,963	2,385	82%	na	na	na
Newport Beach	708	0	25	176	909	9,528	10,249	93%	80.1%	75.9%	95.6%
Orange	1,030	0	0	744	1,774	17,705	18,751	94%	58.1%	52.0%	79.3%
OCWD (GAP)	117	0	0	0	118	984	1,087	91%	100.0%	100.0%	100.0%
Santa Ana	1,918	0	18	449	2,385	21,931	23,076	95%	81.1%	77.1%	75.5%
Seal Beach	229	0	0	1	230	2,208	2,304	96%	99.7%	73.6%	62.4%
Serrano	47	0	0	129	176	1,844	1,898	97%	26.5%	3.4%	0.2%
Tustin	397	0	0	367	764	7,210	7,557	95%	52.0%	56.7%	93.6%
Westminster	763	0	0	0	763	7,176	7,324	98%	100.0%	100.0%	100.0%
Yorba Linda	<u>810</u>	<u>0</u>	<u>0</u>	<u>486</u>	<u>1,295</u>	<u>12,944</u>	<u>13,653</u>	<u>95%</u>	<u>62.5%</u>	<u>12.6%</u>	<u>78.8%</u>
SUBTOTAL:	18,147	0	1,365	7,024	26,536	256,298	263,757	97%	72.5%	67.8%	74.6%
Other Producers (Est ~3% of Subtotal)	<u>386</u>	<u>0</u>	<u>0</u>	<u>9</u>	<u>395</u>	<u>3,604</u>	<u>4,813</u>	<u>75%</u>			
<b>TOTAL:</b>	<b>18,533</b>	<b>0</b>	<b>1,365</b>	<b>7,033</b>	<b>26,931</b>	<b>259,902</b>	<b>268,571</b>		<b>72.5%</b>	<b>67.8%</b>	<b>74.6%</b>
OCWD (Talbert Barrier)	0		1,733	0	1,733	16,650	18,321				
OCSA (GAP)	na		17	na	17	394	839				

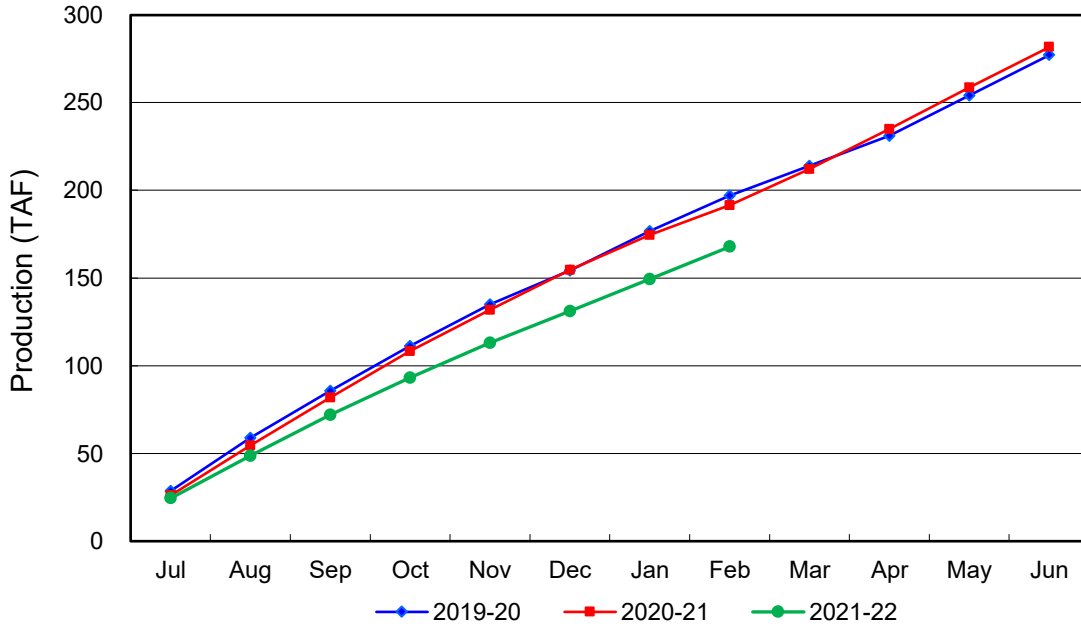
Estimated

(1) Excludes MWD CUP Withdrawals

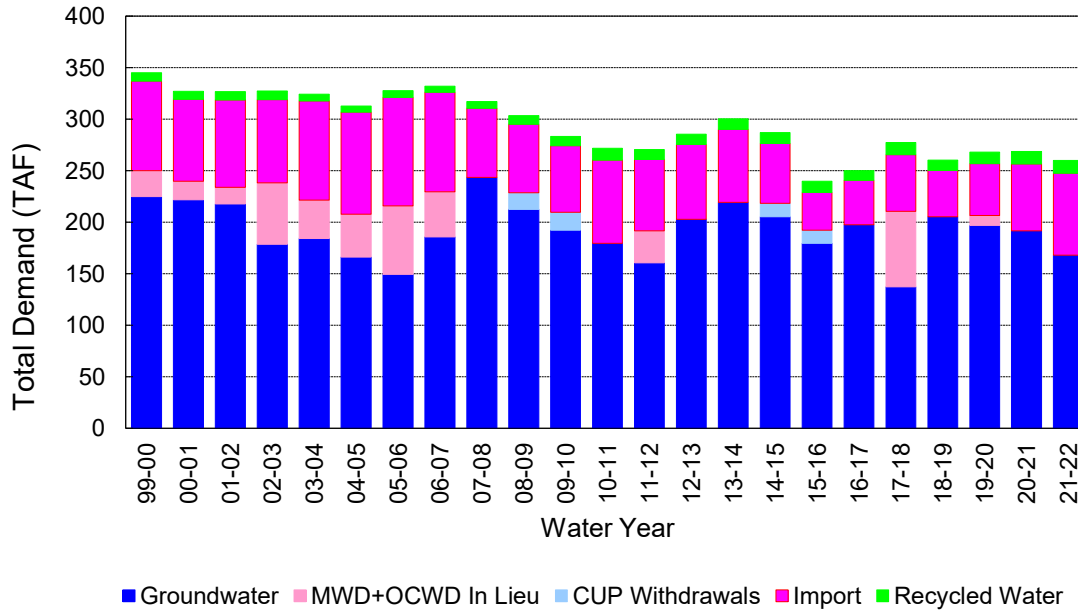
(2) Includes MWD CUP Withdrawals & In Lieu Water

3/10/2022 15:33

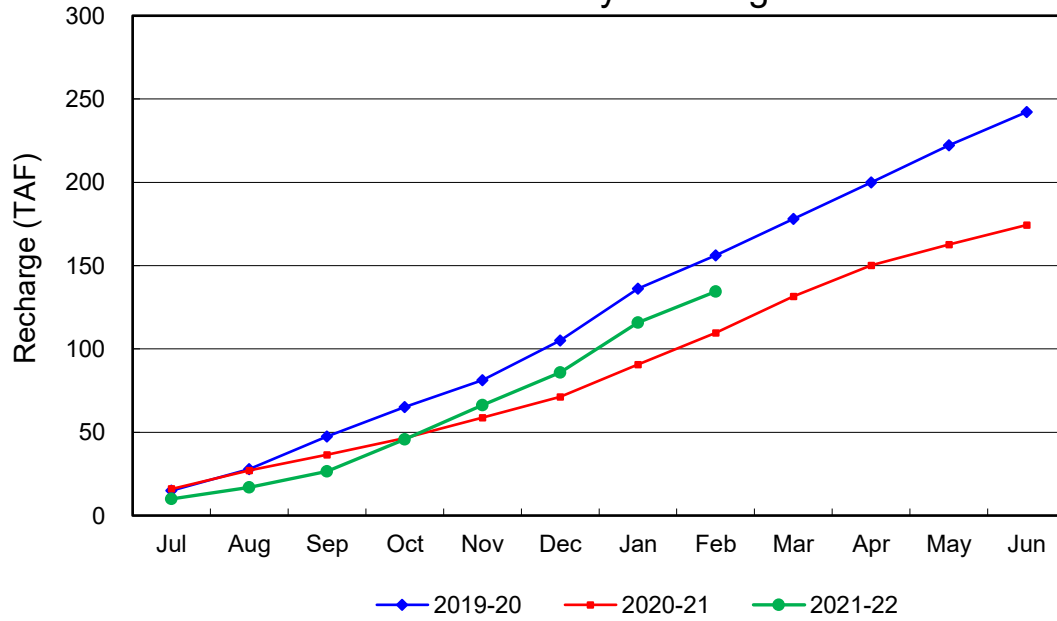
### Annual Groundwater Production



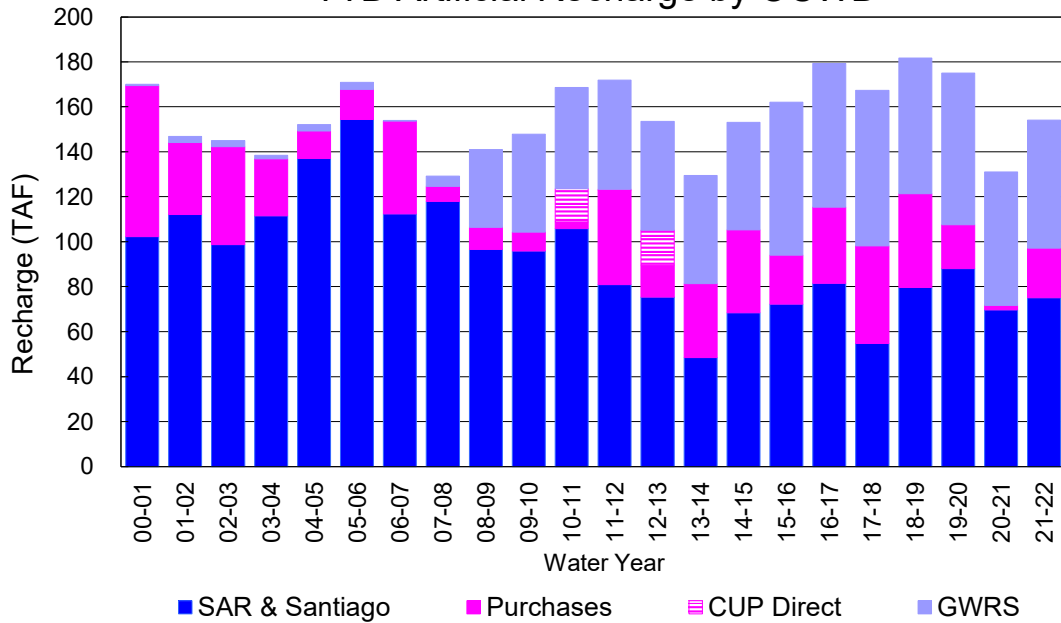
### YTD Total Demand in OCWD



### Annual Forebay Recharge



### YTD Artificial Recharge by OCWD



## RECHARGE AREAS REPORT

February 2022

	Percolation (AF)	Remarks
RIVER SYSTEM	4,763	86 cfs per day average perc
DESILTING SYSTEM	na	SAR
OFF-RIVER SYSTEM	700	SAR
WARNER SYSTEM	681	SAR
OLIVE BASIN	na	Passive System
ANAHEIM LAKE	212	SAR
MINI-ANA LAKE	0	
MILLER BASIN	264	SAR
KRAEMER BASIN	920	SAR
LA PALMA BASIN	4,321	GWRS
MIRA LOMA	1,070	GWRS
LA JOLLA BASIN	273	SAR
PLACENTIA BASIN	na	
RAYMOND BASIN	0	
FIVE COVES BASIN	na	
BURRIS BASIN	858	SAR
RIVER VIEW BASIN	6	
FLETCHER BASIN	0	
SANTIAGO BASINS	4,492	Burris pumped water
SANTIAGO CREEK	172	Burris pumped water
<b>TOTALS</b>	<b>18,732</b>	
<b>5-YR AVERAGE</b>	<b>20,025</b>	

FLOWS TO RECHARGE AREAS (AF)	
Imperial Headgates (estimated)	8,631
GWRS	5,406
OC-28 (MWD)	0
OC-28a (MWD)	0
OC-59	0
Est'd local Forebay inflow below Imperial	0
Est'd local Santiago inflow (estimated)	56
Irvine lake releases (OC-13 MWD)	0
Villa Park Dam releases (estimated)	0
Precip at Warner Basin (inches)	0.20
Precip direct to open water surfaces	11
<b>TOTAL INFLOW</b>	<b>14,104</b>

LOSSES FROM RECHARGE AREAS (AF)	
Est'd SAR flow past Chapman Ave.	0
Est'd Santiago Cr. flow to SAR	0
Est'd flows past Raymond Basin	0
Calc'd evap (inches) Estimated	3.01
Est'd evaporative losses	167
<b>TOTAL LOSSES</b>	<b>167</b>

STORAGE CHANGES (AF)			
Facility	Begin	End	Net
Deep basins	8,117	6,439	-1,678
Santiago Pits	13,442	10,325	-3,117
River			
Off-river			
Irvine Lake			
<b>TOTAL</b>	<b>21,559</b>	<b>16,764</b>	<b>-4,795</b>

SUMMARY (AF)	
TOTAL INFLOW	14,104
TOTAL LOSSES	167
STORAGE CHANGE	-4,795
CALC'D PERCOLATION	18,732

## DEEP BASINS MONTHLY STATUS

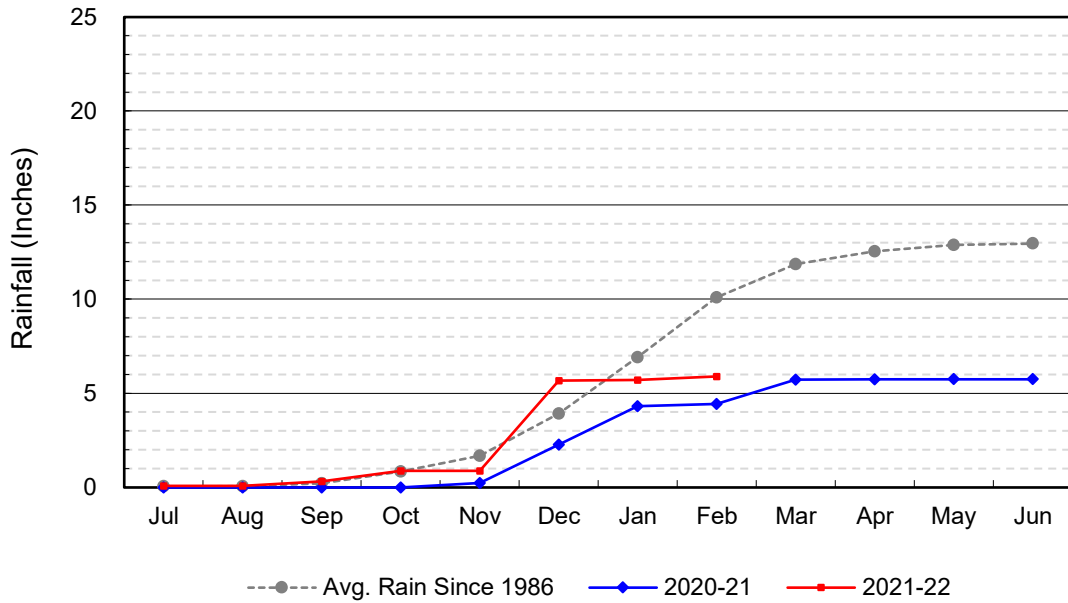
**February 2022**

(values in acre-feet)

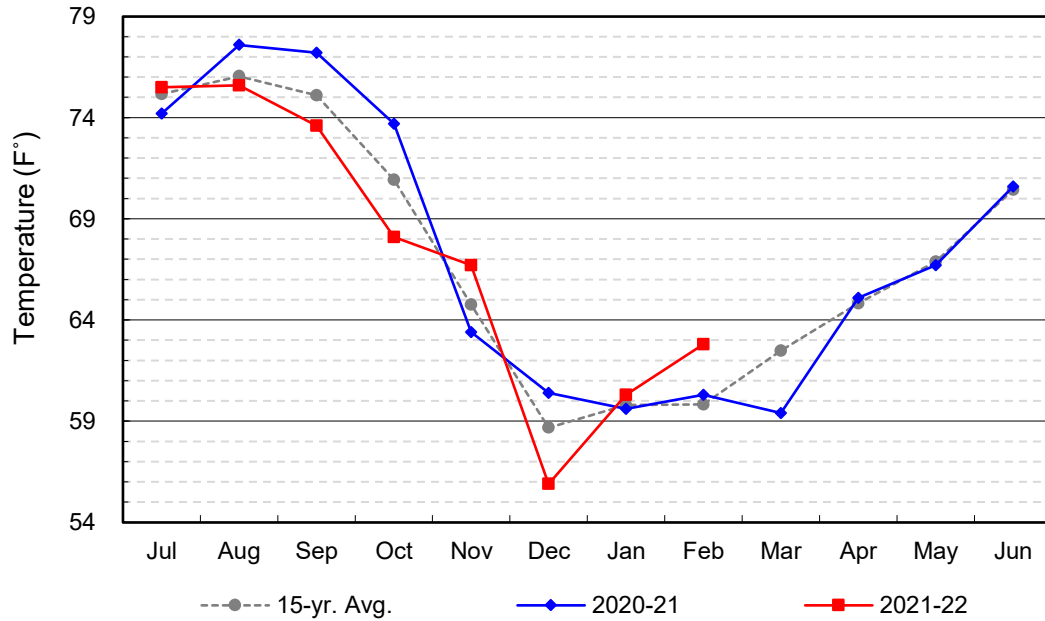
<i>Facility</i>	<i>Storage Start</i>	<i>Storage End</i>	<i>Maximum Storage</i>	<i>Total Perc</i>	<i>Max Perc</i>	<i>Avg Perc</i>	<i>Avg W.S. Elev</i>
Desilting Ponds	230	230	252	na	na	na	na
Fos-Huckleberry	532	529	628	na	na	na	na
Conrock Basin	552	550	661	na	na	na	na
Warner Basins	2,908	2,898	2,900	681	na	na	239
Olive Pit	81	55	95	na	na	na	218
Anaheim Lake	1,117	217	2,300	212	19	8	190
Mini-Anaheim Lk	0	0	10	0	0	0	220
Miller Basin	181	6	350	264	60	9	202
Kraemer Basin	592	178	1,055	920	68	33	189
La Palma Basin	35	43	101	4,321	160	154	215
Mira Loma	16	21	53	1,070	41	38	216
La Jolla Basin	11	4	20	273	28	10	200
Placentia Basin	0	0	200	na	na	na	na
Raymond Basin	0	0	200	0	na	na	na
Five Coves Basins	231	257	329	na	na	na	na
Burriss Pit	1,626	1,451	2,500	858	54	31	164
River View Basin	5	0	8	6	0	0	187
Fletcher Basin	0	0	15	0	0	0	184
Santiago (Bond)	8,249	6,726	8,312	4,492	228	160	273
Santiago (Blu Dia)	5,193	3,599	5,259	-	-	-	-
<b>Totals</b>	<b>21,559</b>	<b>16,764</b>	<b>25,247</b>	<b>13,097</b>			
Prado Dam	5	5	25,000				



### Cumulative Anaheim Field HQ Rainfall



### Temperature at Santa Ana Fire Station



# TALBERT BARRIER MONITORING WELL OCWD-M26

