

WATER RESOURCES SUMMARY

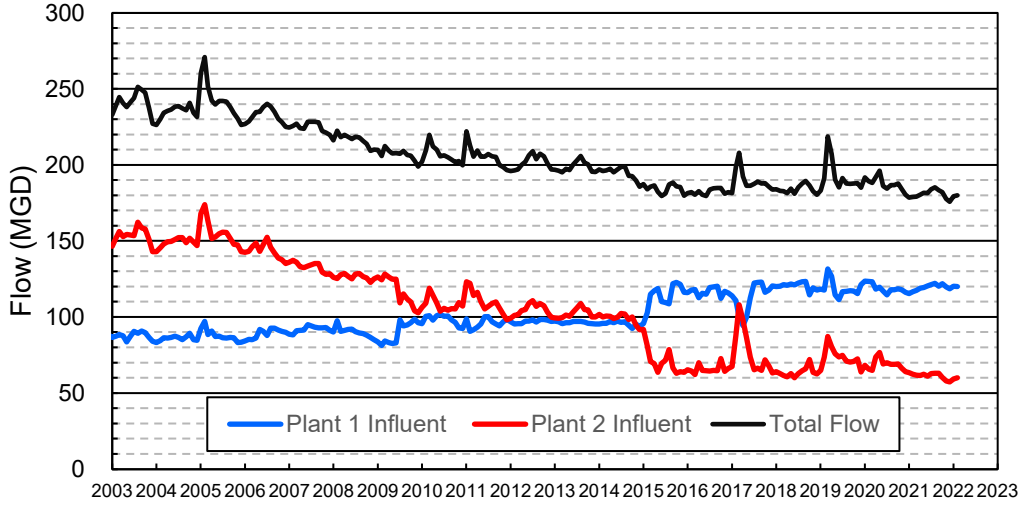
January 2022

INFLOWS & OUTFLOWS (acre-feet)	Total for Month	Year to Date - This Year Last Year	
BASIN SUPPLIES			
Water Purchases from MWD (excludes In Lieu)	0	20,003	0
Water into MWD Storage Account (excludes In Lieu)	0	0	0
SAR & Santiago Creek Flows (accounts for storage to/from recharge facilities)	24,076	79,541	58,967
GWRS Water to Forebay	6,031	33,955	34,801
GWRS Water to Mid-Basin Injection Wells	645	4,614	6,568
GWRS Water to Talbert Barrier	1,802	14,911	16,578
OC-44 and F. Valley Water to Talbert Barrier	0	6	15
Alamitos Barrier Water	270	1,827	1,753
Incidental Recharge (estimated)	3,500	17,800	11,400
Evaporation from Recharge Basins	(189)	(1,452)	(2,016)
River Flow Lost to Ocean	<u>0</u>	<u>(16,269)</u>	<u>(1,039)</u>
Total Groundwater Recharge	36,135	154,936	127,028
WATER PRODUCTION			
Groundwater Production	18,259	149,444	174,565
MWD Storage Program Withdrawals	<u>0</u>	<u>0</u>	<u>0</u>
Total Groundwater Production	18,259	149,444	174,565
BASIN BALANCE			
Change in Groundwater Storage	17,876	5,492	(47,537)
Change in Groundwater Storage excluding MWD Stored Water	17,876	5,492	(47,537)
Accumulated Overdraft	-----	242,511	247,540
Accumulated Overdraft excluding MWD Storage	-----	242,510	247,540
IN LIEU WATER			
OCWD In Lieu Purchases (MWD Cyclic Storage)	0	0	0
MWD In Lieu Storage	<u>0</u>	<u>0</u>	<u>0</u>
Total In Lieu	0	0	0
OTHER KEY INFORMATION			
1. MWD Water Deliveries to Producers	6,476	72,576	59,384
2. Basin Production Percentage	73.8%	67.3%	74.6%
3. Total Water Demand	26,120	232,950	244,673
4. Total GWRS Production	8,480	53,512	57,992
5. Green Acres Project Water	87	2,189	2,636
6. SAR Water Quality			
- Total Dissolved Solids (TDS) of SAR below Prado Dam (ppm)	374	-----	686
- Total Nitrogen of SAR below Prado Dam (ppm)	1.2	-----	3.9
7. Month-End Water Storage Behind Prado Dam	5	-----	9,926
8. Month-End Water Storage in Recharge Facilities	21,559	-----	11,604
9. Water Storage Change in Recharge Facilities	4,083	12,899	(4,135)
10. Total Artificial Recharge	32,635	137,136	115,626
11. Monthly Mean Temperature at Santa Ana Fire Station (°F)	60.3	-----	59.6
12. Rainfall at FHQ (inches)	0.02	5.70	4.31

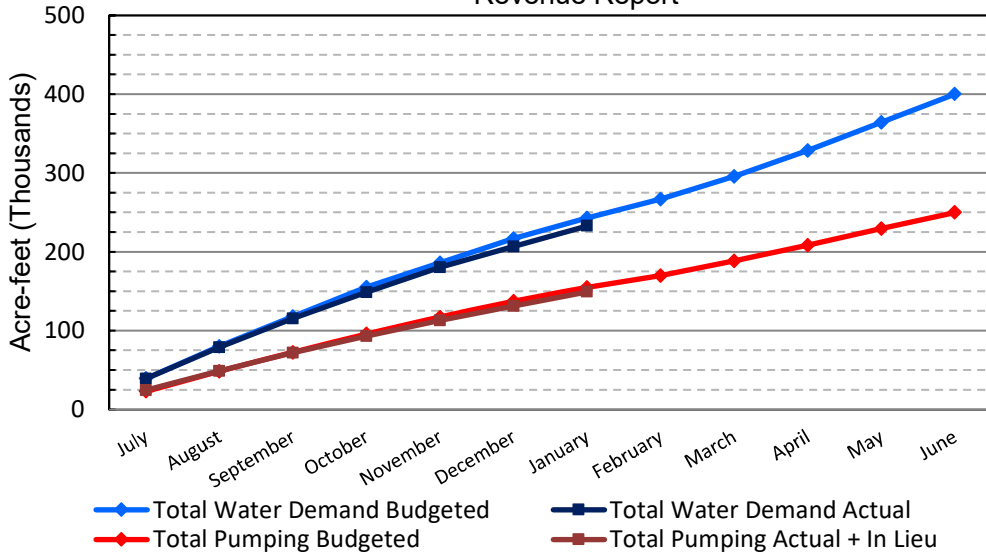
*** Note: Data are preliminary, subject to change

2/10/2022

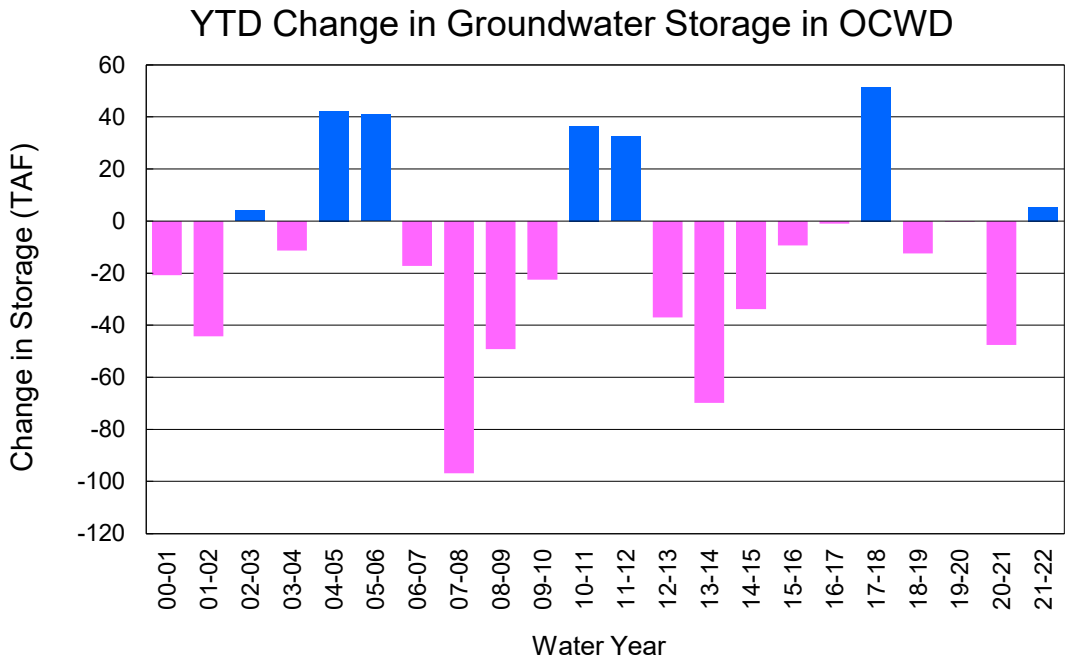
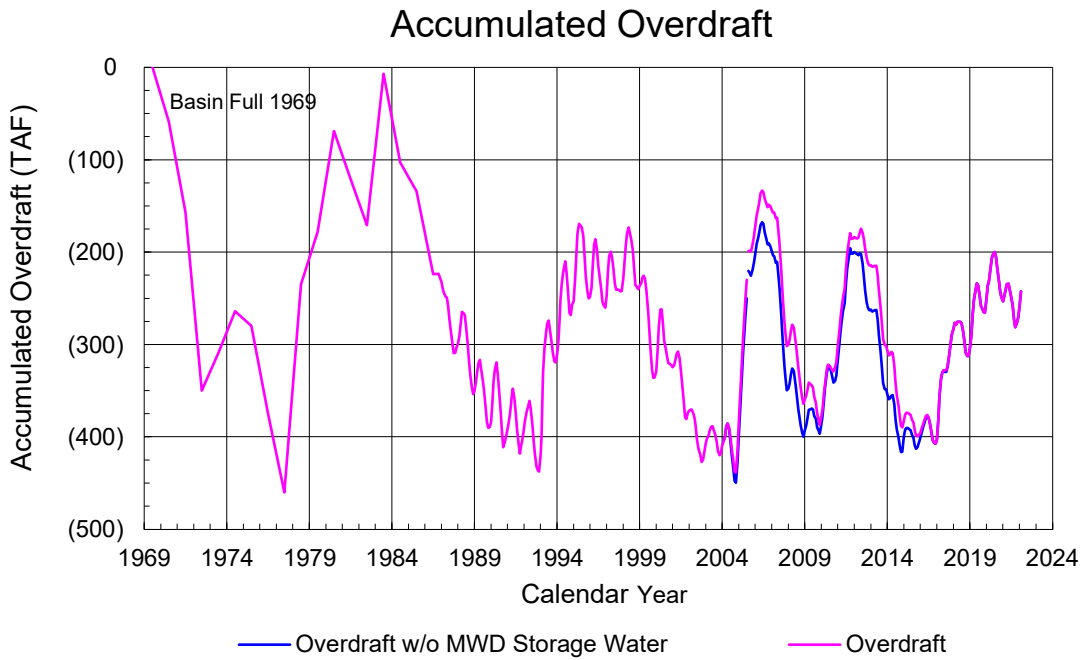
Orange County Sanitation District Influent Flows Report



2021-22 Water Demands/Groundwater Pumping + In Lieu/RA Revenue Report



	Monthly		Accumulated Total for the Year			
	Budget	Actual	Budget	Actual	Difference	Percent
Total Water Demand	26,200	26,120	243,000	232,950	-10,050	95.86%
Total Pumping + In Lieu	17,700	18,259	154,800	149,444	-5,356	96.54%
RA Revenue	\$8,177,400	\$8,435,464	\$71,517,600	\$69,043,069	-\$2,474,531	96.54%



PRODUCERS WATER USAGE SUMMARY

January 2022

(AF except BPP)

WATER AGENCY	Ground-water (1)	In Lieu	Reclaimed Water	Total Import (2)	Total Demand	2021-22 YTD Demand	2020-21 YTD Demand	YTD % Diff Demand	JAN 2022 BPP	2021-22 YTD BPP	2020-21 YTD BPP
Anaheim	1,127	0	0	2,822	3,949	35,544	35,528	100%	28.5%	30.1%	26.1%
Buena Park	865	0	0	0	866	7,815	8,020	97%	100.0%	82.8%	87.1%
East Orange County	0	0	0	55	56	545	645	84%	0.5%	0.3%	10.8%
Fountain Valley	585	0	26	0	611	6,040	6,325	95%	100.0%	100.0%	100.0%
Fullerton	1,165	0	0	327	1,492	14,128	14,819	95%	78.1%	75.7%	73.1%
Garden Grove	1,490	0	0	19	1,509	13,107	13,906	94%	98.7%	85.0%	70.9%
Golden State	1,017	0	0	486	1,503	13,751	14,779	93%	67.7%	62.2%	71.6%
West OC System	934	-	-	2	935	8,322	8,799	95%	na	na	na
East OC System	83	-	-	484	568	5,430	5,980	91%	na	na	na
Huntington Beach	1,456	0	0	317	1,773	15,260	16,813	91%	82.1%	83.8%	81.3%
Irvine Ranch	3,170	0	1,316	1	4,487	37,239	37,368	100%	100.0%	98.7%	99.6%
DRWF Clear	1,984	-	-	-	1,984	16,762	17,657	95%	na	na	na
DRWF Color	418	-	-	-	418	4,058	4,909	83%	na	na	na
Laguna Beach	0	0	0	200	200	1,912	2,189	na	0.0%	0.0%	12.1%
La Palma	114	0	0	0	114	1,032	1,210	85%	100.0%	94.1%	100.0%
Mesa Water (MW)	1,085	0	25	0	1,109	10,253	10,519	97%	100.0%	97.8%	100.0%
MW Clear	1,068	-	-	-	1,068	7,678	7,605	101%	na	na	na
MW Amber	17	-	-	-	17	1,854	2,321	80%	na	na	na
Newport Beach	659	0	11	264	934	8,619	9,346	92%	71.4%	75.4%	95.2%
Orange	1,215	0	0	470	1,685	15,931	17,054	93%	72.1%	51.3%	78.0%
OCWD (GAP)	112	0	0	0	112	867	975	89%	100.0%	100.0%	100.0%
Santa Ana	1,827	0	8	496	2,330	19,546	20,836	94%	78.6%	76.6%	75.1%
Seal Beach	205	0	0	1	206	1,978	2,105	94%	99.5%	70.6%	58.9%
Serrano	16	0	0	137	153	1,667	1,754	95%	10.2%	0.9%	0.3%
Tustin	440	0	0	273	713	6,446	6,858	94%	61.7%	57.3%	96.8%
Westminster	749	0	0	0	749	6,413	6,596	97%	100.0%	100.0%	100.0%
Yorba Linda	<u>583</u>	<u>0</u>	<u>0</u>	<u>598</u>	<u>1,181</u>	<u>11,649</u>	<u>12,575</u>	<u>93%</u>	<u>49.3%</u>	<u>7.1%</u>	<u>85.2%</u>
SUBTOTAL:	17,878	0	1,385	6,468	25,731	229,742	240,220	96%	73.8%	67.3%	74.6%
Other Producers (Est ~3% of Subtotal)	<u>381</u>	<u>0</u>	<u>0</u>	<u>8</u>	<u>389</u>	<u>3,208</u>	<u>4,452</u>	<u>72%</u>			
TOTAL:	18,259	0	1,385	6,476	26,120	232,950	244,673		73.8%	67.3%	74.6%
OCWD (Talbert Barrier)	0		1,802	0	1,802	14,917	16,593				
OCSA (GAP)	na		18	na	18	376	778				

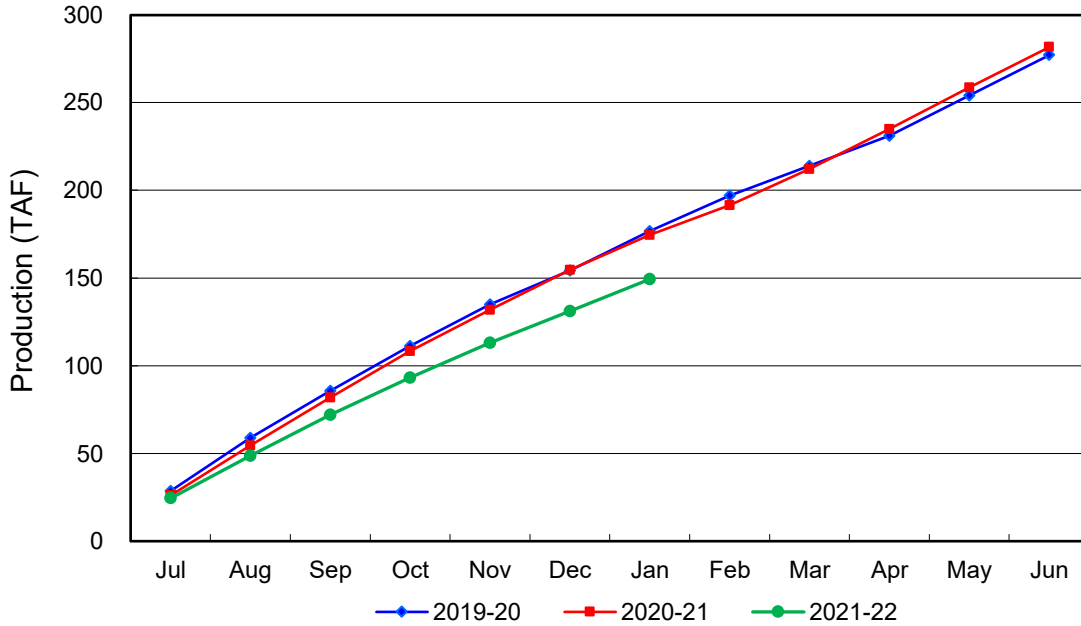
Estimated

(1) Excludes MWD CUP Withdrawals

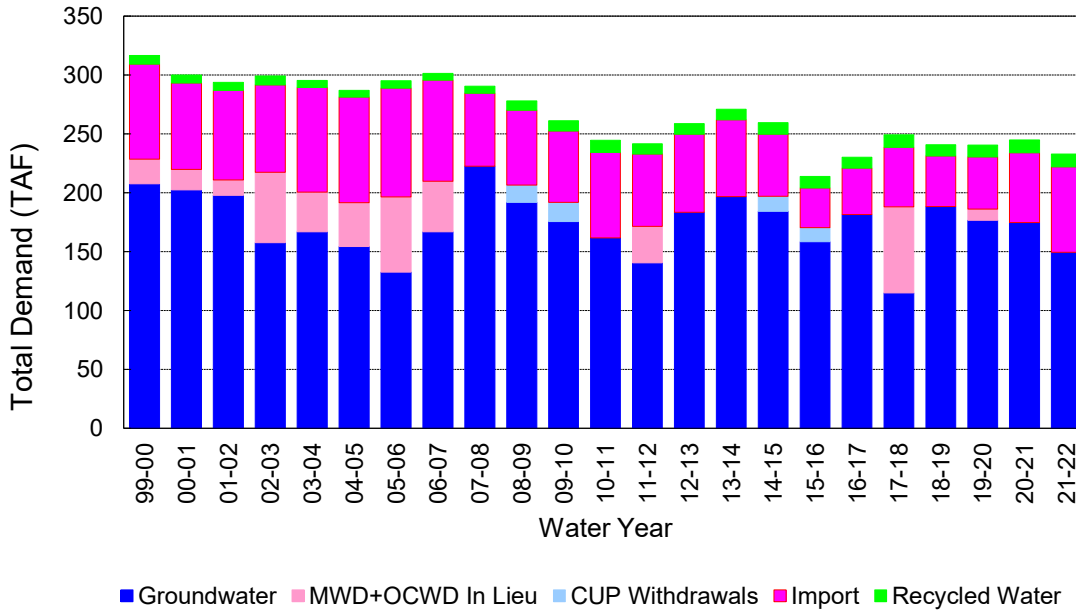
(2) Includes MWD CUP Withdrawals & In Lieu Water

2/10/2022 15:30

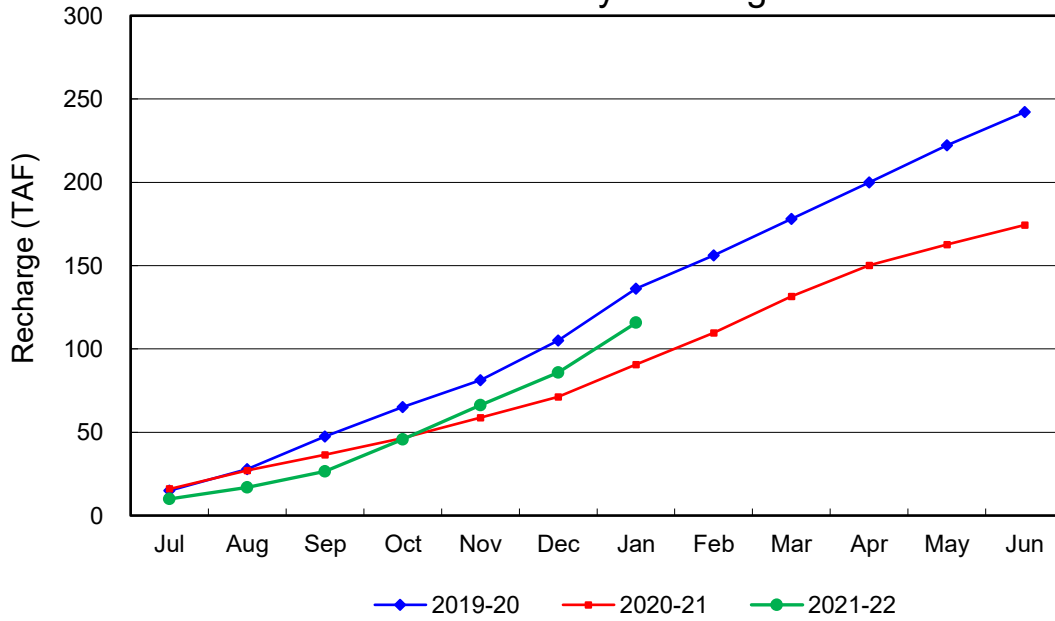
Annual Groundwater Production



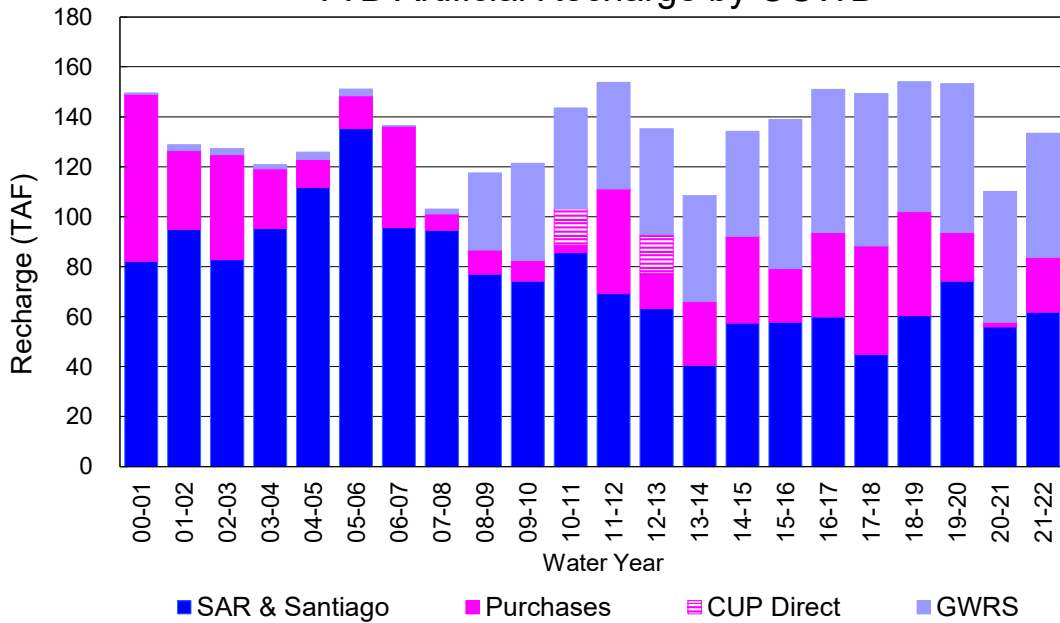
YTD Total Demand in OCWD



Annual Forebay Recharge



YTD Artificial Recharge by OCWD



RECHARGE AREAS REPORT

January 2022

	Percolation (AF)	Remarks
RIVER SYSTEM	4,908	80 cfs per day average perc
DESILTING SYSTEM	na	SAR
OFF-RIVER SYSTEM	1,660	SAR
WARNER SYSTEM	267	SAR
OLIVE BASIN	na	Passive System
ANAHEIM LAKE	3,197	SAR
MINI-ANA LAKE	390	SAR
MILLER BASIN	929	SAR
KRAEMER BASIN	3,405	SAR
LA PALMA BASIN	4,820	GWRS
MIRA LOMA	1,200	GWRS
LA JOLLA BASIN	566	
PLACENTIA BASIN	na	
RAYMOND BASIN	0	
FIVE COVES BASIN	na	
BURRIS BASIN	950	SAR
RIVER VIEW BASIN	283	SAR, Burris pumping
FLETCHER BASIN	23	
SANTIAGO BASINS	6,991	SAR, Burris pumping
SANTIAGO CREEK	331	SAR, Burris pumping
TOTALS	29,920	
5-YR AVERAGE	24,745	

FLOWS TO RECHARGE AREAS (AF)	
Imperial Headgates (estimated)	28,075
GWRS	6,033
OC-28 (MWD)	0
OC-28a (MWD)	0
OC-59	0
Est'd local Forebay inflow below Imperial	10
Est'd local Santiago inflow (estimated)	73
Irvine lake releases (OC-13 MWD)	0
Villa Park Dam releases (estimated)	0
Precip at Warner Basin (inches)	0.02
Precip direct to open water surfaces	1
TOTAL INFLOW	34,192

LOSSES FROM RECHARGE AREAS (AF)	
Est'd SAR flow past Chapman Ave.	0
Est'd Santiago Cr. flow to SAR	0
Est'd flows past Raymond Basin	0
Calc'd evap (inches) Estimated	2.87
Est'd evaporative losses	189
TOTAL LOSSES	189

STORAGE CHANGES (AF)			
Facility	Begin	End	Net
Deep basins	8,297	8,117	-180
Santiago Pits	9,179	13,442	4,263
River			
Off-river			
Irvine Lake			
TOTAL	17,476	21,559	4,083

SUMMARY (AF)	
TOTAL INFLOW	34,192
TOTAL LOSSES	189
STORAGE CHANGE	4,083
CALC'D PERCOLATION	29,920

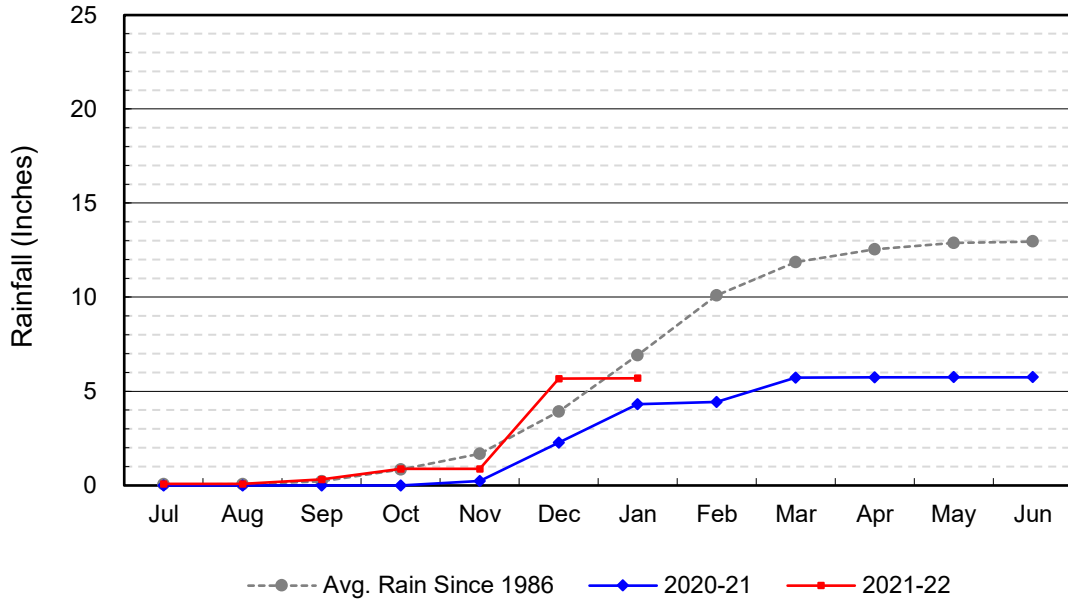
DEEP BASINS MONTHLY STATUS

January 2022

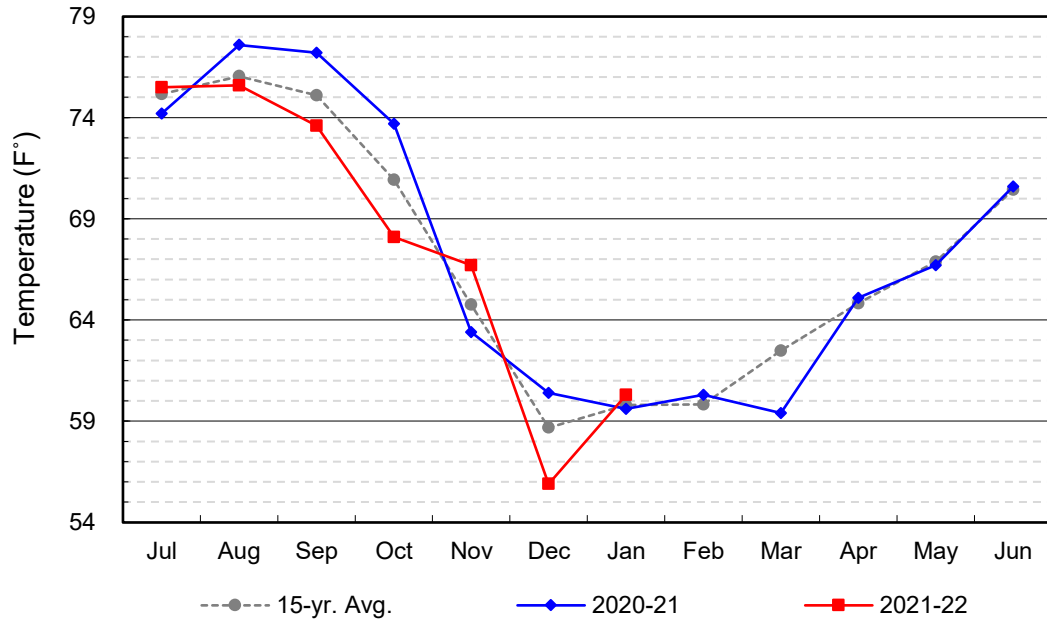
(values in acre-feet)

<i>Facility</i>	<i>Storage Start</i>	<i>Storage End</i>	<i>Maximum Storage</i>	<i>Total Perc</i>	<i>Max Perc</i>	<i>Avg Perc</i>	<i>Avg W.S. Elev</i>
Desilting Ponds	230	230	252	na	na	na	na
Fos-Huckleberry	577	532	628	na	na	na	na
Conrock Basin	612	552	661	na	na	na	na
Warner Basins	2,864	2,908	2,900	267	na	na	238
Olive Pit	68	81	95	na	na	na	220
Anaheim Lake	1,195	1,117	2,300	3,197	134	103	214
Mini-Anaheim Lk	7	0	10	390	16	13	224
Miller Basin	0	181	350	929	60	30	206
Kraemer Basin	402	592	1,055	3,405	126	110	205
La Palma Basin	48	35	101	4,820	167	155	214
Mira Loma	14	16	53	1,200	41	39	216
La Jolla Basin	0	11	20	566	26	18	202
Placentia Basin	0	0	200	na	na	na	na
Raymond Basin	0	0	200	0	na	na	na
Five Coves Basins	306	231	329	na	na	na	na
Burriss Pit	1,961	1,626	2,500	950	43	31	168
River View Basin	0	5	8	283	19	9	187
Fletcher Basin	13	0	15	23	7	1	185
Santiago (Bond)	6,094	8,249	8,312	6,991	276	226	277
Santiago (Blu Dia)	3,085	5,193	5,259	-	-	-	-
Totals	17,476	21,559	25,247	23,021			
Prado Dam	14,861	5	25,000				

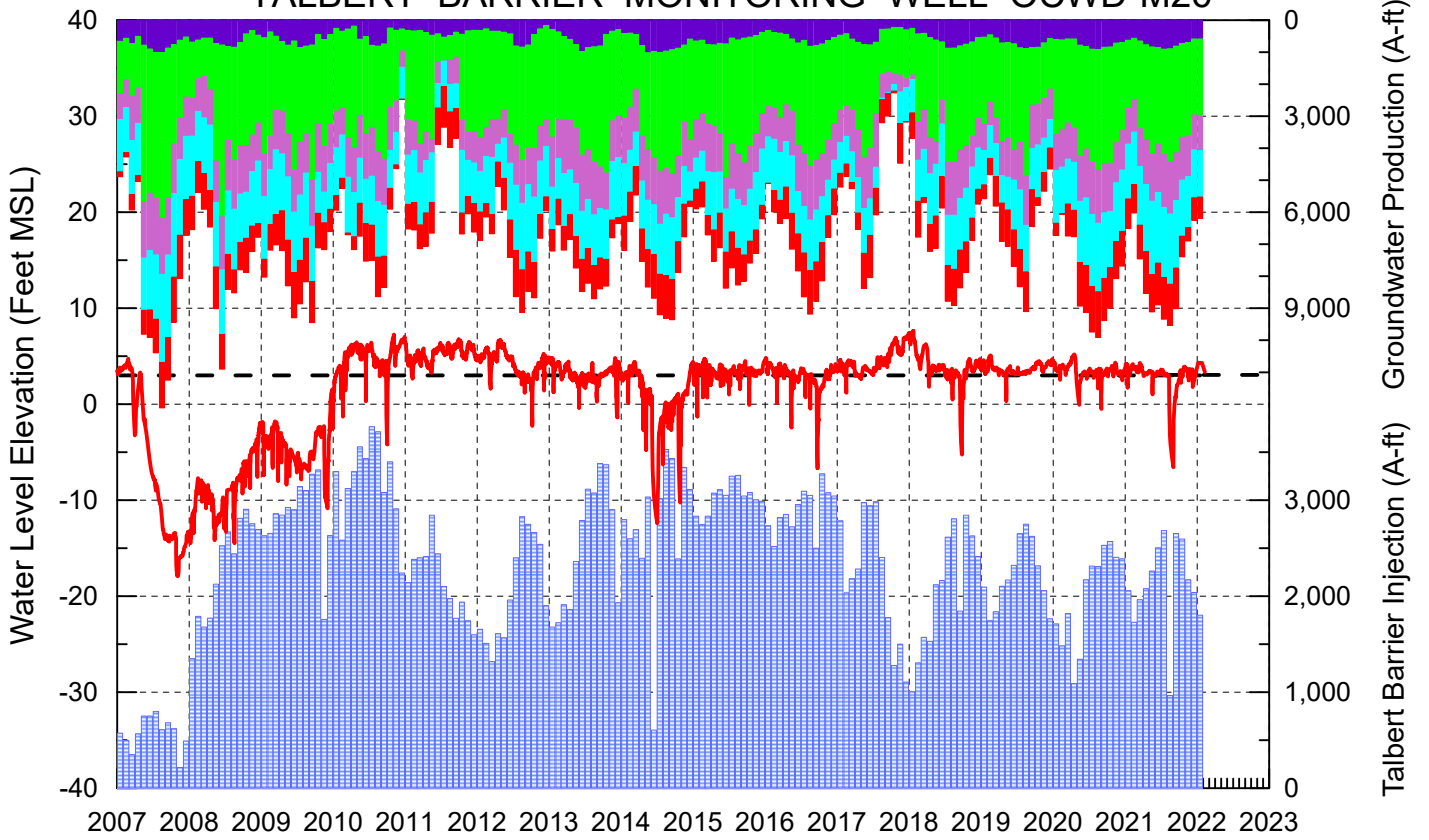
Cumulative Anaheim Field HQ Rainfall



Temperature at Santa Ana Fire Station



TALBERT BARRIER MONITORING WELL OCWD-M26



- Talbert/Lambda Aquifer Mergence Zone Perforated Interval: 71 - 135 ft. bgs
- ▨ Talbert Barrier Injection
- - - Protective Level to Prevent Seawater Intrusion
- ▨ Fountain Valley Groundwater Production
- ▨ IRWD Groundwater Production
- ▨ Mesa Water Groundwater Production
- ▨ Huntington Beach Groundwater Production
- ▨ Newport Beach Groundwater Production

