

WATER RESOURCES SUMMARY

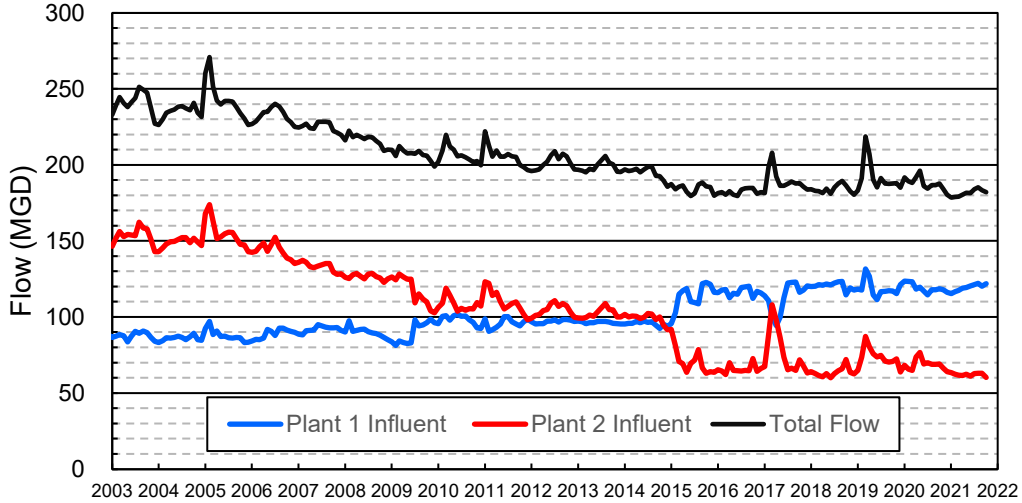
September 2021

INFLOWS & OUTFLOWS (acre-feet)	Total for Month	Year to Date - This Year Last Year	
BASIN SUPPLIES			
Water Purchases from MWD (excludes In Lieu)	0	0	0
Water into MWD Storage Account (excludes In Lieu)	0	0	0
SAR & Santiago Creek Flows (accounts for storage to/from recharge facilities)	5,103	15,385	23,448
GWRS Water to Forebay	4,663	11,873	14,296
GWRS Water to Mid-Basin Injection Wells	496	1,622	2,867
GWRS Water to Talbert Barrier	2,654	6,306	7,154
OC-44 Water to Talbert Barrier	0	0	10
Alamitos Barrier Water	275	816	687
Incidental Recharge (estimated)	1,500	3,500	3,300
Evaporation from Recharge Basins	(202)	(735)	(1,184)
River Flow Lost to Ocean	<u>0</u>	<u>0</u>	<u>0</u>
Total Groundwater Recharge	14,491	38,766	50,579
WATER PRODUCTION			
Groundwater Production	23,419	72,119	81,823
MWD Storage Program Withdrawals	<u>0</u>	<u>0</u>	<u>0</u>
Total Groundwater Production	23,419	72,119	81,823
BASIN BALANCE			
Change in Groundwater Storage	(8,928)	(33,353)	(31,244)
Change in Groundwater Storage excluding MWD Stored Water	(8,928)	(33,353)	(31,244)
Accumulated Overdraft	-----	281,354	231,244
Accumulated Overdraft excluding MWD Storage	-----	281,354	231,244
IN LIEU WATER			
OCWD In Lieu Purchases (MWD Cyclic Storage)	0	0	0
MWD In Lieu Storage	<u>0</u>	<u>0</u>	<u>0</u>
Total In Lieu	0	0	0
OTHER KEY INFORMATION			
1. MWD Water Deliveries to Producers	11,531	38,218	32,045
2. Basin Production Percentage	67.0%	65.4%	71.9%
3. Total Water Demand	36,580	115,393	118,821
4. Total GWRS Production	7,819	19,818	24,345
5. Green Acres Project Water	418	1,336	1,516
6. SAR Water Quality			
- Total Dissolved Solids (TDS) of SAR below Prado Dam (ppm)	696	-----	712
- Total Nitrogen of SAR below Prado Dam (ppm)	4.5	-----	5.0
7. Month-End Water Storage Behind Prado Dam	1	-----	0
8. Month-End Water Storage in Recharge Facilities	6,664	-----	8,903
9. Water Storage Change in Recharge Facilities	(525)	(1,996)	(6,836)
10. Total Artificial Recharge	12,991	35,266	47,279
11. Monthly Mean Temperature at Santa Ana Fire Station (°F)	73.6	-----	77.2
12. Rainfall at FHQ (inches)	0.24	0.32	0.00

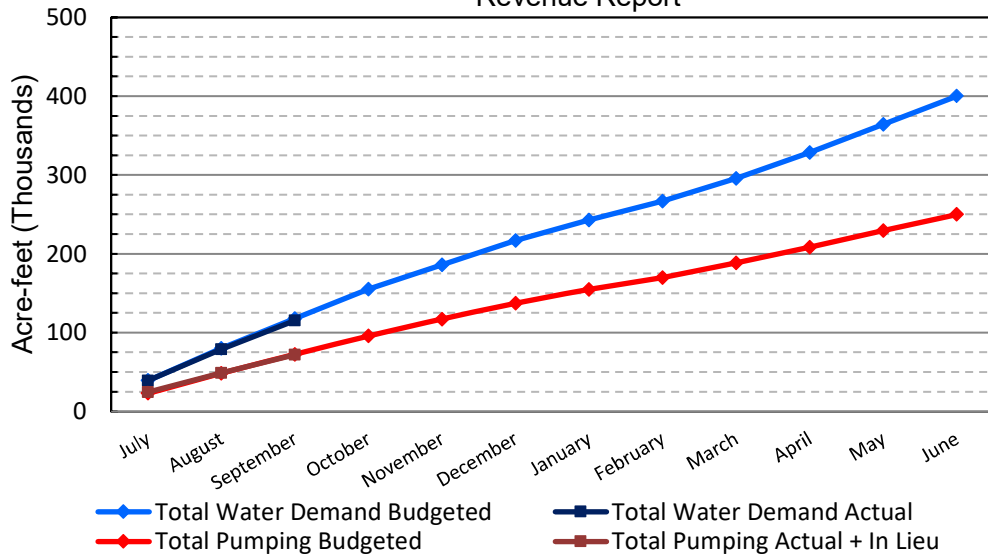
*** Note: Data are preliminary, subject to change

10/14/2021

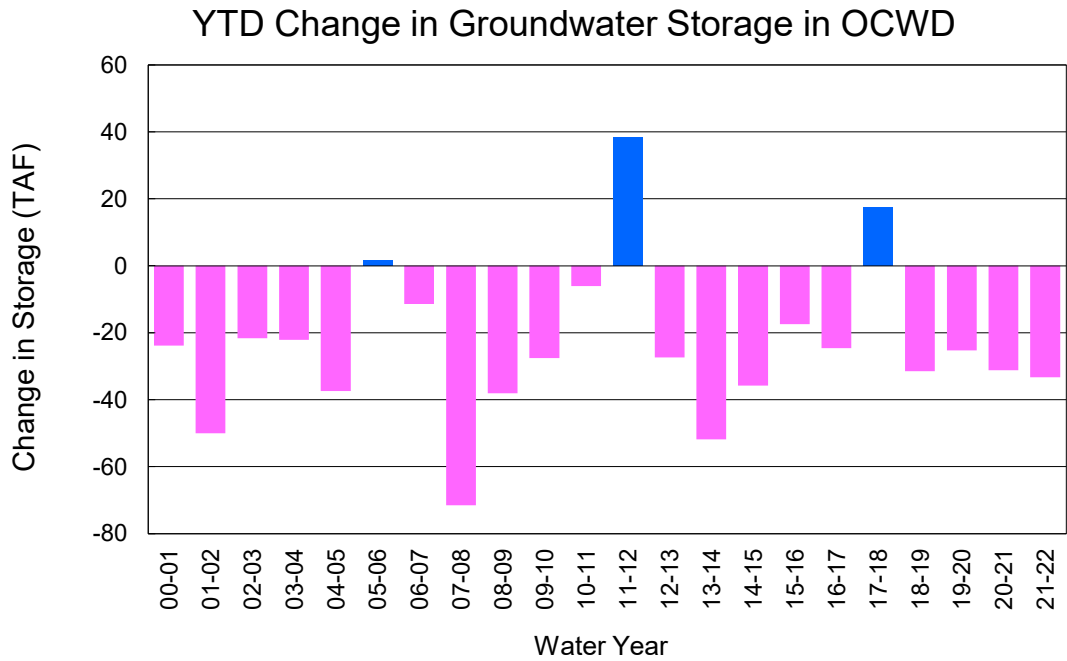
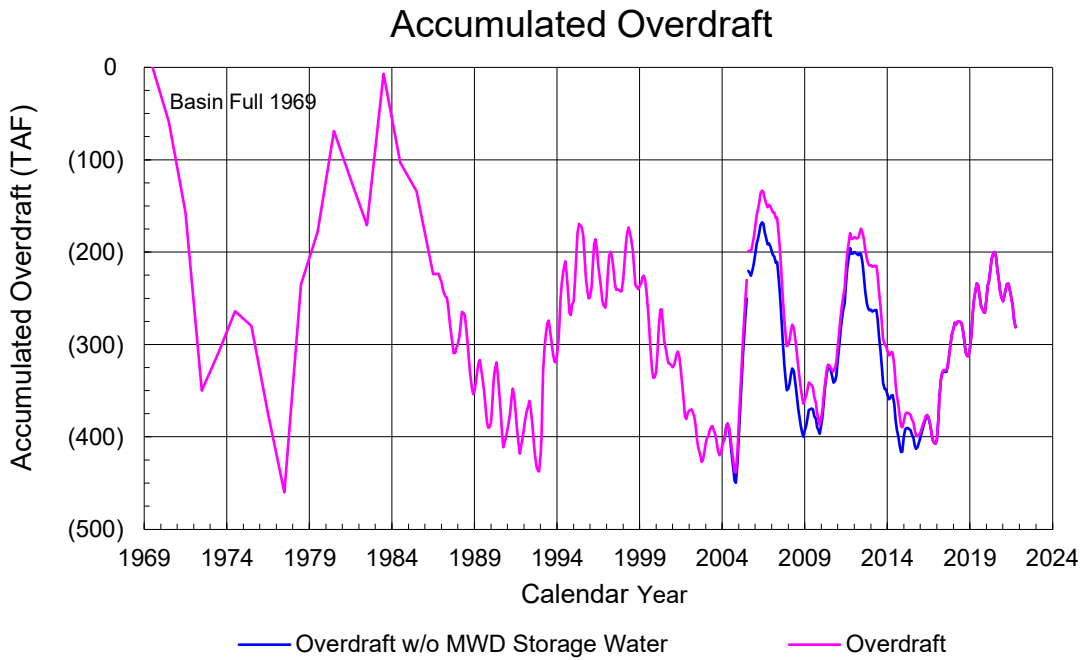
Orange County Sanitation District Influent Flows Report



2019-20 Water Demands/Groundwater Pumping + In Lieu/RA Revenue Report



	Monthly		Accumulated Total for the Year			
	Budget	Actual	Budget	Actual	Difference	Percent
Total Water Demand	38,000	36,580	117,900	115,393	-2,507	97.87%
Total Pumping + In Lieu	24,200	23,419	72,500	72,119	-381	99.47%
RA Revenue	\$11,180,400	\$10,819,572	\$33,495,000	\$33,319,117	-\$175,883	99.47%



PRODUCERS WATER USAGE SUMMARY

September 2021

(AF except BPP)

WATER AGENCY	Ground-water (1)	In Lieu	Reclaimed Water	Total Import (2)	Total Demand	2021-22 YTD Demand	2020-21 YTD Demand	YTD % Diff Demand	SEPT 2021 BPP	2021-22 YTD BPP	2020-21 YTD BPP
Anaheim	1,613	0	0	3,819	5,432	16,894	16,976	100%	29.7%	29.0%	26.3%
Buena Park	967	0	0	289	1,256	3,952	3,962	100%	77.0%	79.9%	83.6%
East Orange County	0	0	0	89	89	292	282	104%	0.3%	0.3%	0.0%
Fountain Valley	807	0	158	0	966	3,092	3,126	99%	100.0%	100.0%	100.0%
Fullerton	1,704	0	0	601	2,305	7,363	7,379	100%	73.9%	76.8%	78.3%
Garden Grove	1,538	0	0	471	2,010	6,455	6,688	97%	76.5%	75.3%	58.7%
Golden State	1,304	0	0	853	2,157	6,949	7,202	96%	60.4%	58.2%	70.0%
West OC System	1,254	-	-	24	1,278	4,129	4,195	98%	na	na	na
East OC System	50	-	-	829	879	2,820	3,007	94%	na	na	na
Huntington Beach	2,103	0	0	328	2,431	7,749	8,298	93%	86.5%	83.7%	77.7%
Irvine Ranch	4,319	0	1,272	90	5,682	17,393	17,737	98%	98.0%	98.0%	99.7%
DRWF Clear	2,857	-	-	-	2,857	8,514	8,861	96%	na	na	na
DRWF Color	483	-	-	-	483	1,671	2,097	80%	na	na	na
Laguna Beach	0	0	0	298	298	958	1,053	na	0.0%	0.0%	0.0%
La Palma	161	0	0	0	161	513	584	88%	100.0%	88.7%	100.0%
Mesa Water (MW)	1,494	0	104	0	1,597	5,104	5,177	99%	100.0%	100.0%	100.0%
MW Clear	1,084	-	-	-	1,084	3,234	3,326	97%	na	na	na
MW Amber	409	-	-	-	409	1,518	1,480	103%	na	na	na
Newport Beach	1,265	0	59	7	1,330	4,532	4,612	98%	99.5%	89.3%	94.3%
Orange	1,263	0	0	1,386	2,648	8,190	8,417	97%	47.7%	46.0%	67.2%
OCWD (GAP)	125	0	0	0	125	420	505	83%	100.0%	100.0%	100.0%
Santa Ana	2,362	0	34	623	3,020	9,499	9,867	96%	79.1%	76.3%	70.0%
Seal Beach	309	0	0	1	310	1,022	1,068	96%	99.8%	43.3%	19.3%
Serrano	0	0	0	262	262	875	889	98%	0.0%	0.0%	0.2%
Tustin	560	0	0	461	1,021	3,238	3,302	98%	54.8%	50.8%	94.4%
Westminster	987	0	0	0	987	3,126	3,110	101%	100.0%	100.0%	100.0%
Yorba Linda	<u>49</u>	<u>0</u>	<u>0</u>	<u>1,938</u>	<u>1,987</u>	<u>6,222</u>	<u>6,445</u>	<u>97%</u>	<u>2.5%</u>	<u>0.8%</u>	<u>81.2%</u>
SUBTOTAL:	22,931	0	1,627	11,517	36,075	113,841	116,680	98%	67.0%	65.4%	71.9%
Other Producers (Est ~3% of Subtotal)	<u>488</u>	<u>0</u>	<u>0</u>	<u>15</u>	<u>503</u>	<u>1,552</u>	<u>2,142</u>	<u>72%</u>			
TOTAL:	23,419	0	1,627	11,531	36,577	115,393	118,821		67.0%	65.4%	71.9%
OCWD (Talbert Barrier)	0		2,654	0	2,655	6,306	7,164				
OCSD (GAP)	na		61	na	61	176	391				

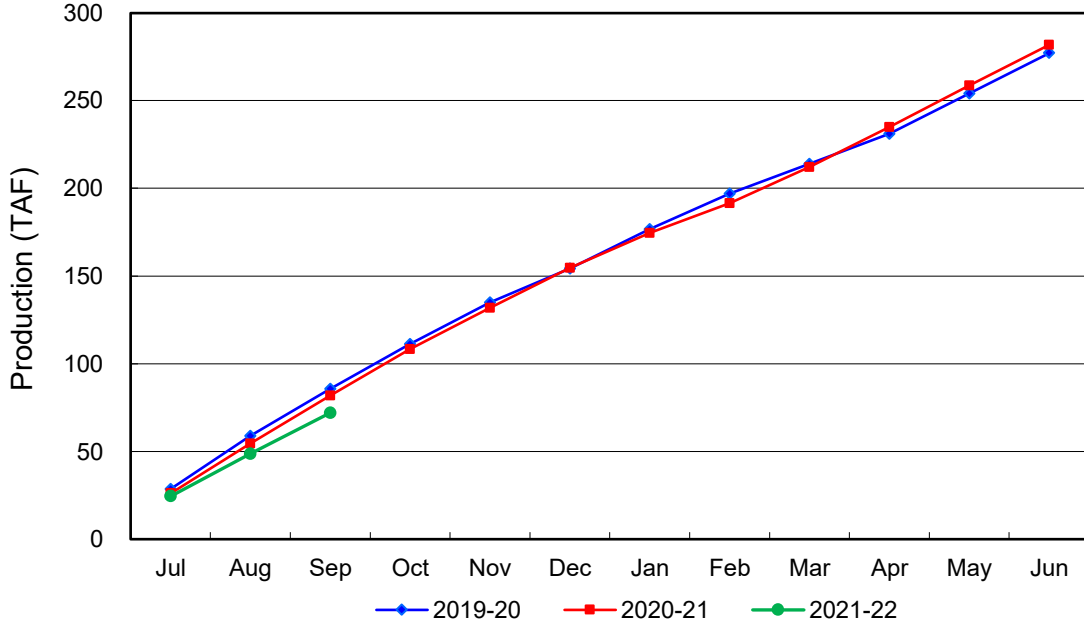
Estimated

(1) Excludes MWD CUP Withdrawals

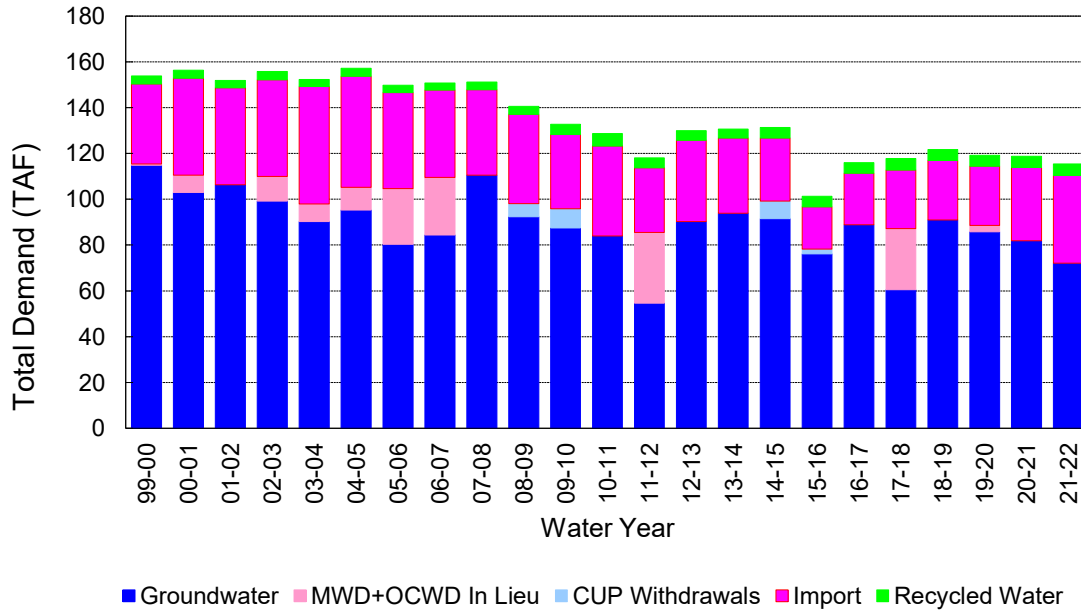
(2) Includes MWD CUP Withdrawals & In Lieu Water

10/14/2021 11:39

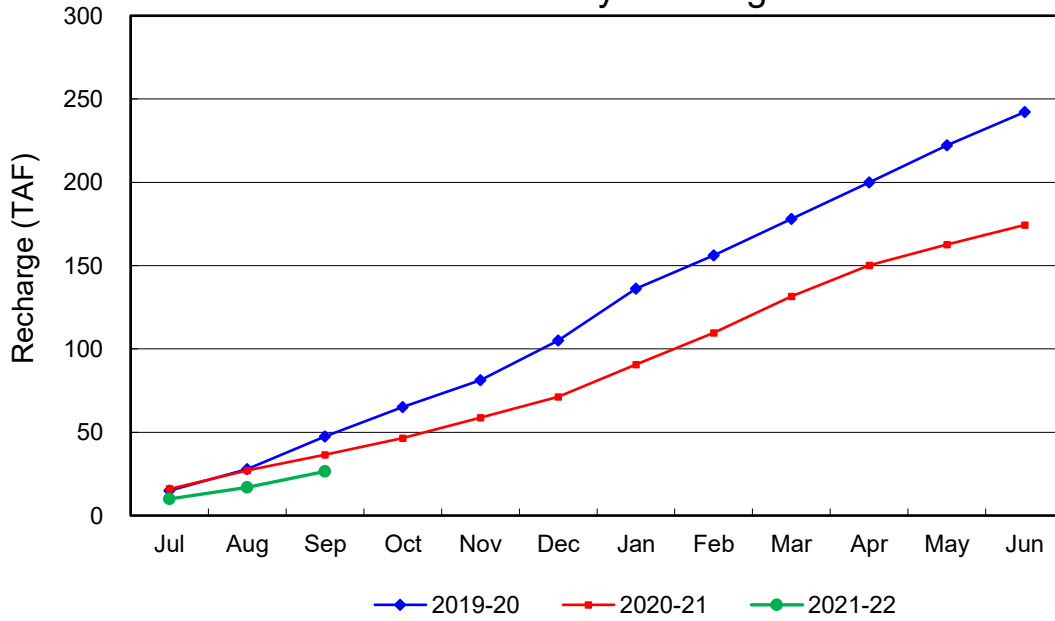
Annual Groundwater Production



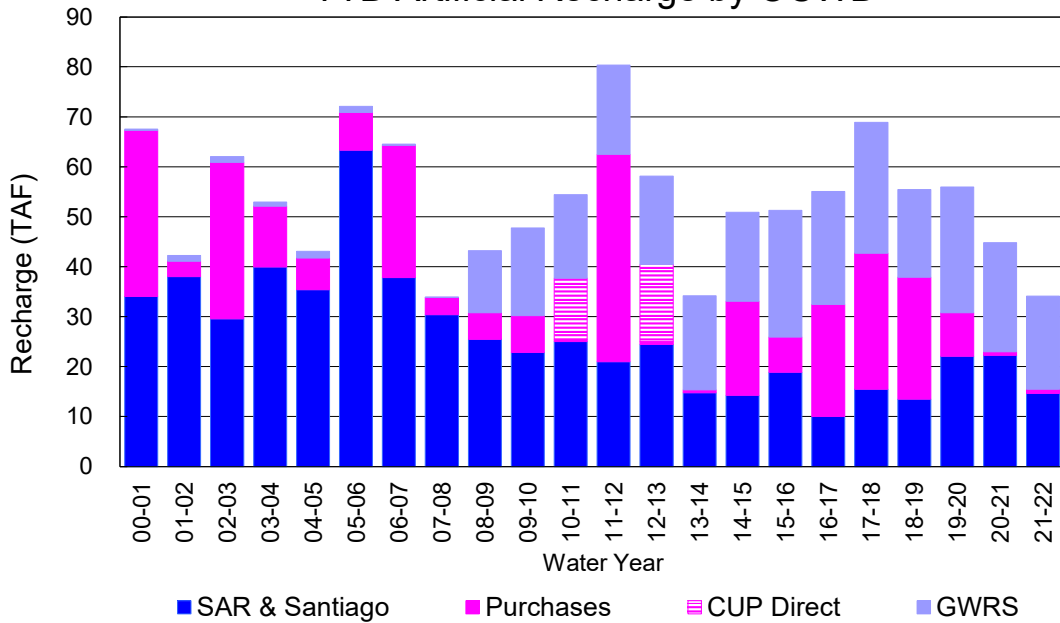
YTD Total Demand in OCWD



Annual Forebay Recharge



YTD Artificial Recharge by OCWD



RECHARGE AREAS REPORT

September 2021

	Percolation (AF)	Remarks
RIVER SYSTEM	3,816	64 cfs per day average perc
DESILTING SYSTEM	na	SAR
OFF-RIVER SYSTEM	0	
WARNER SYSTEM	869	SAR
OLIVE BASIN	na	Passive System
ANAHEIM LAKE	0	
MINI-ANA LAKE	0	
MILLER BASIN	1,222	GWRS
KRAEMER BASIN	0	SAR
LA PALMA BASIN	430	GWRS
MIRA LOMA	2,977	GWRS
LA JOLLA BASIN	0	
PLACENTIA BASIN	na	
RAYMOND BASIN	0	
FIVE COVES BASIN	na	
BURRIS BASIN	190	SAR
RIVER VIEW BASIN	0	
FLETCHER BASIN	0	
SANTIAGO BASINS	63	
SANTIAGO CREEK	0	
TOTALS	9,567	
5-YR AVERAGE	14,447	

FLOWS TO RECHARGE AREAS (AF)	
Imperial Headgates (estimated)	4,570
GWRS	4,665
OC-28 (MWD)	0
OC-28a (MWD)	0
OC-59	0
Est'd local Forebay inflow below Imperial	0
Est'd local Santiago inflow (estimated)	0
Irvine lake releases (OC-13 MWD)	0
Villa Park Dam releases (estimated)	0
Precip at Warner Basin (inches)	0.24
Precip direct to open water surfaces	8
TOTAL INFLOW	9,243

LOSSES FROM RECHARGE AREAS (AF)	
Est'd SAR flow past Chapman Ave.	0
Est'd Santiago Cr. flow to SAR	0
Est'd flows past Raymond Basin	0
Calc'd evap (inches) Estimated	5.92
Est'd evaporative losses	202
TOTAL LOSSES	202

STORAGE CHANGES (AF)			
Facility	Begin	End	Net
Deep basins	5,354	4,888	-466
Santiago Pits	1,835	1,776	-59
River			
Off-river			
Irvine Lake			
TOTAL	7,189	6,664	-525

SUMMARY (AF)	
TOTAL INFLOW	9,243
TOTAL LOSSES	202
STORAGE CHANGE	-525
CALC'D PERCOLATION	9,567

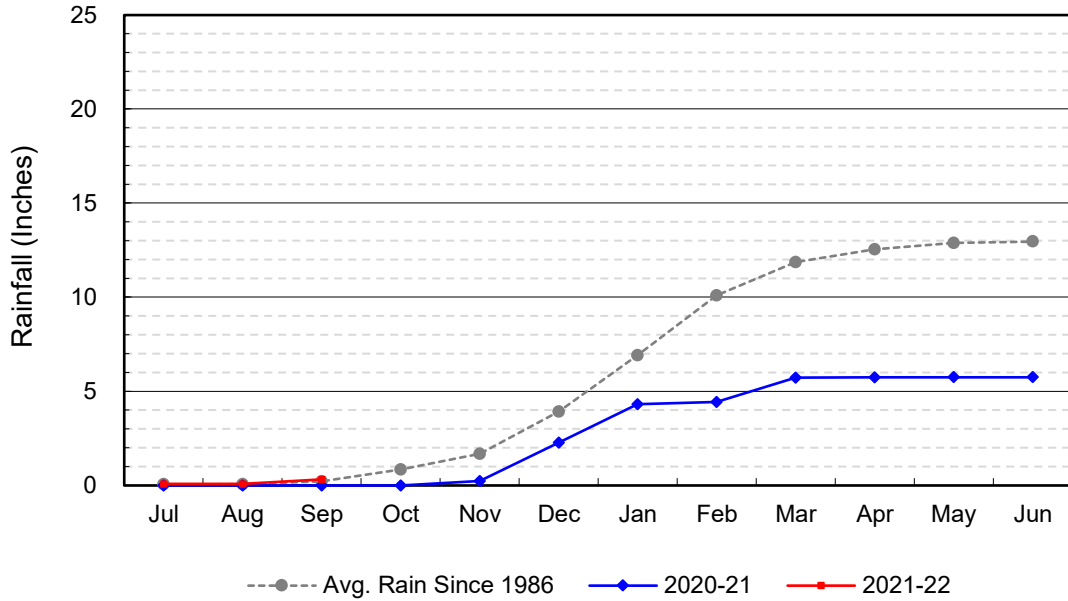
DEEP BASINS MONTHLY STATUS

September 2021

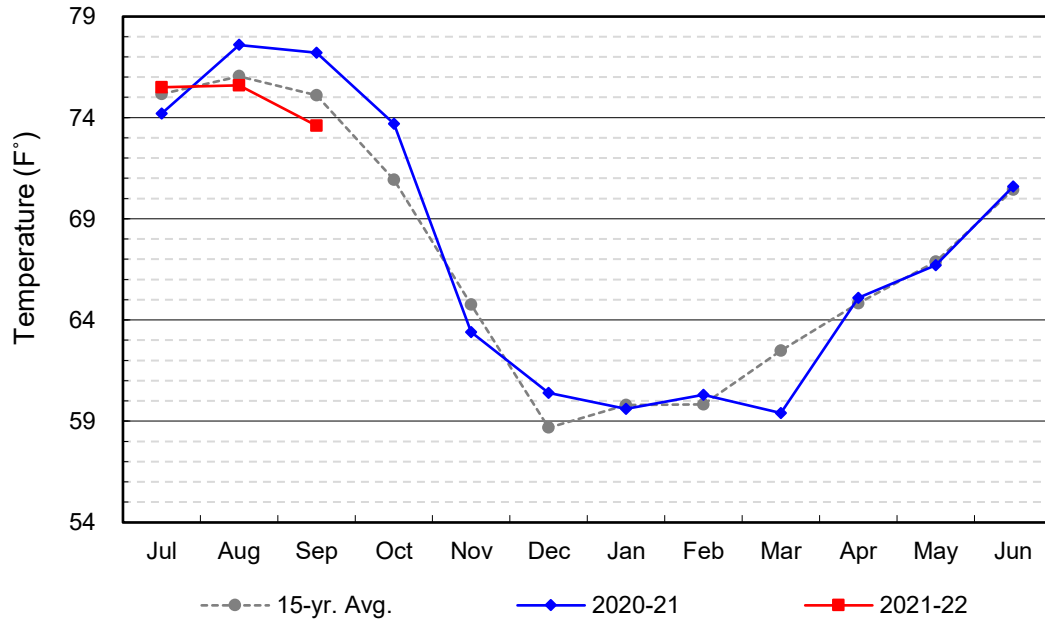
(values in acre-feet)

<i>Facility</i>	<i>Storage Start</i>	<i>Storage End</i>	<i>Maximum Storage</i>	<i>Total Perc</i>	<i>Max Perc</i>	<i>Avg Perc</i>	<i>Avg W.S. Elev</i>
Desilting Ponds	220	190	252	na	na	na	na
Fos-Huckleberry	524	518	628	na	na	na	na
Conrock Basin	551	533	661	na	na	na	na
Warner Basins	2,853	2,635	2,900	869	na	na	237
Olive Pit	19	11	95	na	na	na	201
Anaheim Lake	0	0	2,300	0	0	0	168
Mini-Anaheim Lk	0	0	10	0	0	0	220
Miller Basin	0	0	350	1,222	86	41	205
Kraemer Basin	0	0	1,055	0	0	0	164
La Palma Basin	0	2	101	430	54	14	210
Mira Loma	0	22	53	2,977	125	99	216
La Jolla Basin	0	0	20	0	0	0	199
Placentia Basin	0	0	200	na	na	na	na
Raymond Basin	20	0	200	0	na	na	na
Five Coves Basins	0	0	329	na	na	na	na
Burris Pit	1,167	977	2,500	190	9	6	156
River View Basin	0	0	8	0	0	0	187
Fletcher Basin	0	0	15	0	0	0	184
Santiago (Bond)	1,097	1,059	8,312	63	7	2	184
Santiago (Blu Dia)	738	717	5,259	-	-	-	-
Totals	7,189	6,664	25,247	5,751			
Prado Dam	1	1	25,000				

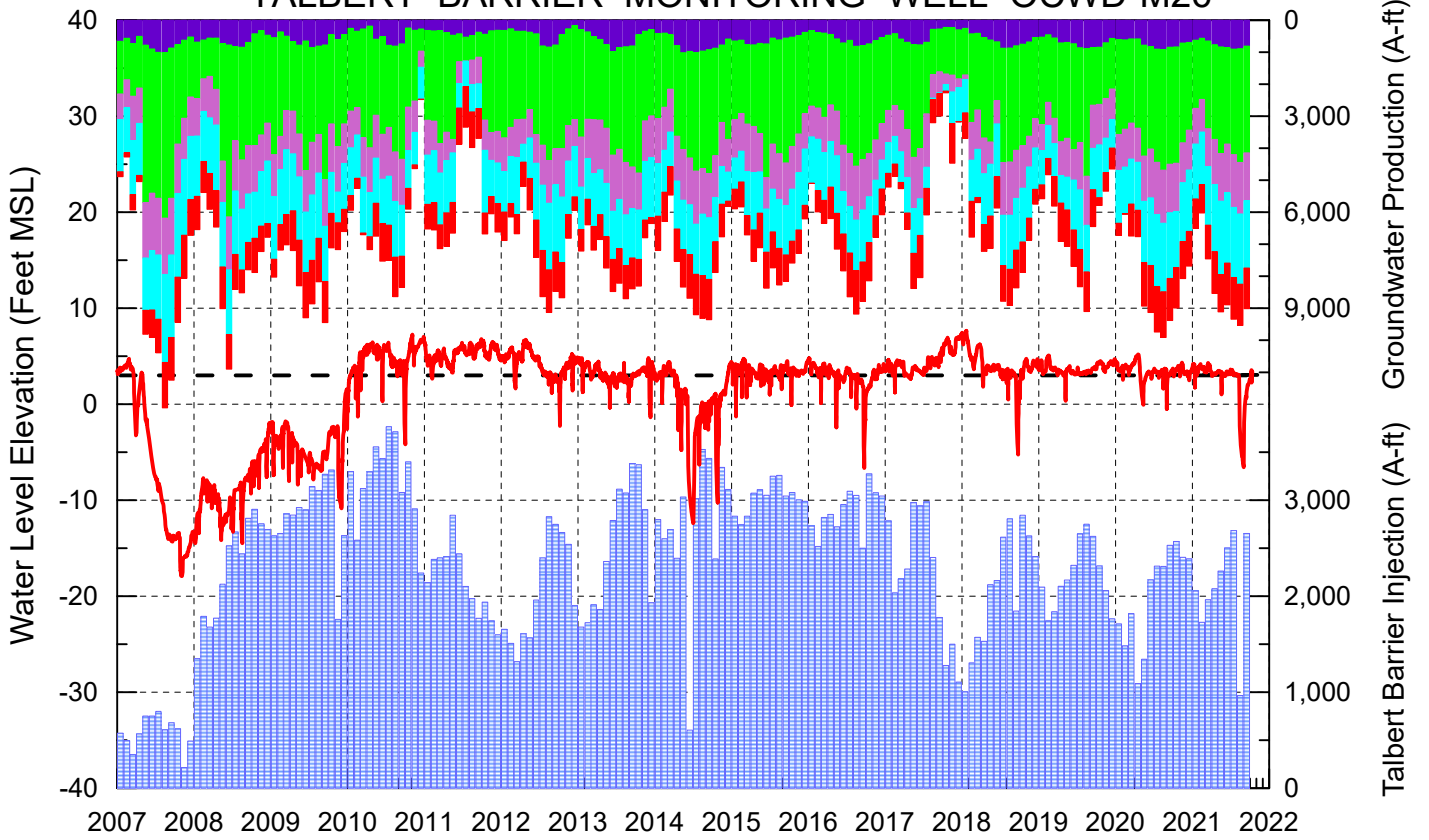
Cumulative Anaheim Field HQ Rainfall



Temperature at Santa Ana Fire Station



TALBERT BARRIER MONITORING WELL OCWD-M26



- Talbert/Lambda Aquifer Mergence Zone Perforated Interval: 71 - 135 ft. bgs
- ▨ Talbert Barrier Injection
- - - Protective Level to Prevent Seawater Intrusion
- ▨ Fountain Valley Groundwater Production
- ▨ IRWD Groundwater Production
- ▨ Mesa Water Groundwater Production
- ▨ Huntington Beach Groundwater Production
- ▨ Newport Beach Groundwater Production

