

WATER RESOURCES SUMMARY

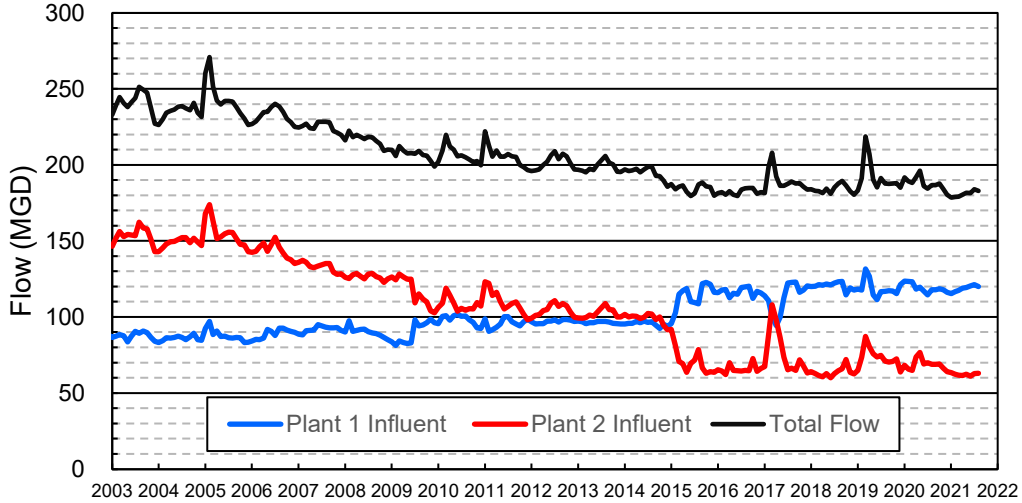
July 2021

INFLOWS & OUTFLOWS (acre-feet)	Total for Month	Year to Date - This Year Last Year	
BASIN SUPPLIES			
Water Purchases from MWD (excludes In Lieu)	0	0	0
Water into MWD Storage Account (excludes In Lieu)	0	0	0
SAR & Santiago Creek Flows (accounts for storage to/from recharge facilities)	5,022	5,022	11,162
GWRS Water to Forebay	5,267	5,267	5,327
GWRS Water to Mid-Basin Injection Wells	818	818	1,006
GWRS Water to Talbert Barrier	2,684	2,684	2,314
OC-44 Water to Talbert Barrier	0	0	1
Alamitos Barrier Water	230	230	239
Incidental Recharge (estimated)	1,800	1,800	1,800
Evaporation from Recharge Basins	(275)	(275)	(418)
River Flow Lost to Ocean	<u>0</u>	<u>0</u>	<u>0</u>
Total Groundwater Recharge	15,547	15,547	21,431
WATER PRODUCTION			
Groundwater Production	24,628	24,628	26,171
MWD Storage Program Withdrawals	<u>0</u>	<u>0</u>	<u>0</u>
Total Groundwater Production	24,628	24,628	26,171
BASIN BALANCE			
Change in Groundwater Storage	(9,081)	(9,081)	(4,740)
Change in Groundwater Storage excluding MWD Stored Water	(9,081)	(9,081)	(4,740)
Accumulated Overdraft	-----	246,350	204,740
Accumulated Overdraft excluding MWD Storage	-----	246,350	204,740
IN LIEU WATER			
OCWD In Lieu Purchases (MWD Cyclic Storage)	0	0	0
MWD In Lieu Storage	<u>0</u>	<u>0</u>	<u>0</u>
Total In Lieu	0	0	0
OTHER KEY INFORMATION			
1. MWD Water Deliveries to Producers	12,999	12,999	11,845
2. Basin Production Percentage	65.5%	65.5%	68.8%
3. Total Water Demand	39,258	39,258	39,679
4. Total GWRS Production	8,778	8,778	8,654
5. Green Acres Project Water	476	476	503
6. SAR Water Quality			
- Total Dissolved Solids (TDS) of SAR below Prado Dam (ppm)	700	-----	760
- Total Nitrogen of SAR below Prado Dam (ppm)	3.3	-----	4.5
7. Month-End Water Storage Behind Prado Dam	25	-----	1
8. Month-End Water Storage in Recharge Facilities	8,028	-----	11,914
9. Water Storage Change in Recharge Facilities	(632)	(632)	(3,825)
10. Total Artificial Recharge	13,747	13,747	19,631
11. Monthly Mean Temperature at Santa Ana Fire Station (°F)	75.5	-----	74.2
12. Rainfall at FHQ (inches)	0.08	0.08	0.00

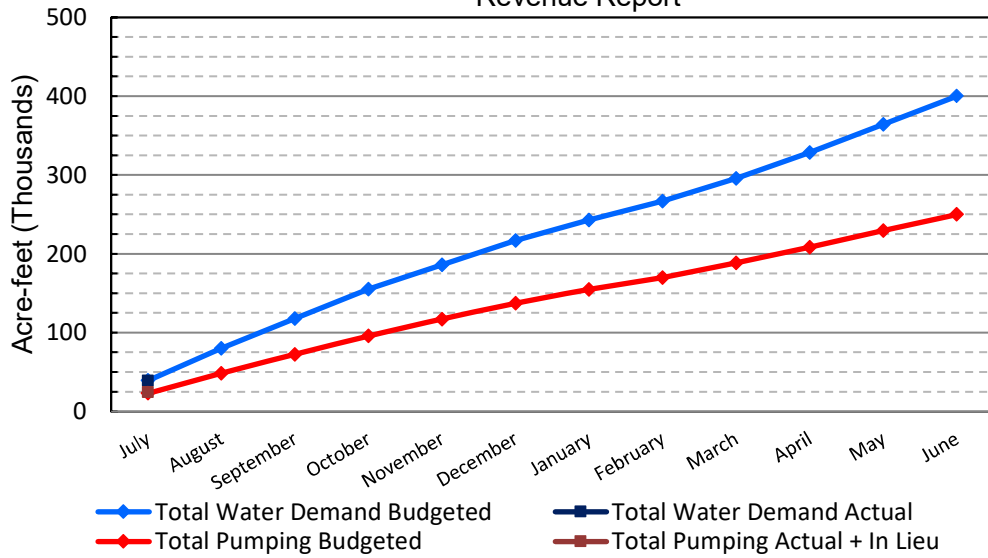
*** Note: Data are preliminary, subject to change

8/12/2021

Orange County Sanitation District Influent Flows Report

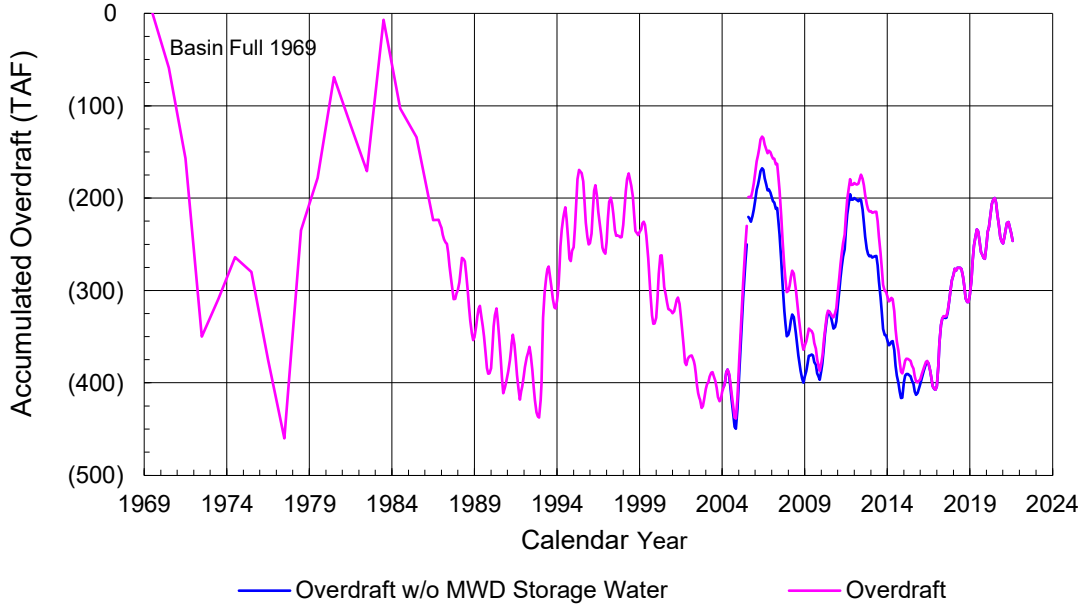


2019-20 Water Demands/Groundwater Pumping + In Lieu/RA Revenue Report

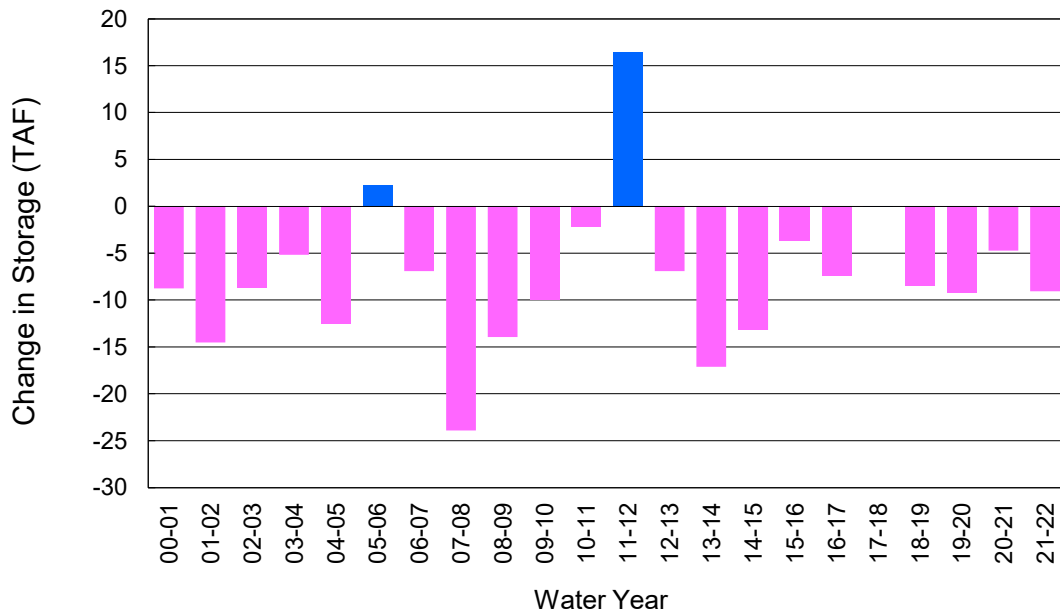


	Monthly		Accumulated Total for the Year			
	Budget	Actual	Budget	Actual	Difference	Percent
Total Water Demand	39,400	39,258	39,400	39,258	-142	99.64%
Total Pumping + In Lieu	23,200	24,628	23,200	24,628	1,428	106.16%
RA Revenue	\$10,718,400	\$11,378,157	\$10,718,400	\$11,378,157	\$659,757	106.16%

Accumulated Overdraft



YTD Change in Groundwater Storage in OCWD



PRODUCERS WATER USAGE SUMMARY

July 2021

(AF except BPP)

WATER AGENCY	Ground-water (1)	In Lieu	Reclaimed Water	Total Import (2)	Total Demand	2021-22 YTD Demand	2020-21 YTD Demand	YTD % Diff Demand	JUL 2021 BPP	2021-22 YTD BPP	2020-21 YTD BPP
Anaheim	1,582	0	0	3,948	5,530	5,530	5,694	97%	28.6%	28.6%	22.6%
Buena Park	1,152	0	0	204	1,356	1,356	1,299	104%	85.0%	85.0%	82.0%
East Orange County	0	0	0	100	100	100	90	111%	0.2%	0.2%	0.0%
Fountain Valley	909	0	174	0	1,082	1,082	1,074	101%	100.0%	100.0%	100.0%
Fullerton	1,966	0	0	544	2,511	2,511	2,492	101%	78.3%	78.3%	76.7%
Garden Grove	1,675	0	0	565	2,240	2,240	2,228	101%	74.8%	74.8%	31.9%
Golden State	1,399	0	0	991	2,390	2,390	2,426	99%	58.5%	58.5%	69.0%
West OC System	1,325	-	-	102	1,427	1,427	1,425	100%	na	na	na
East OC System	74	-	-	889	963	963	1,001	96%	na	na	na
Huntington Beach	2,189	0	0	483	2,672	2,672	2,789	96%	81.9%	81.9%	80.7%
Irvine Ranch	4,374	0	1,215	101	5,689	5,689	5,832	98%	97.7%	97.7%	99.5%
DRWF Clear	2,680	-	-	-	2,680	2,680	2,809	95%	na	na	na
DRWF Color	611	-	-	-	611	611	723	84%	na	na	na
Laguna Beach	0	0	0	305	305	305	354	na	0.0%	0.0%	0.0%
La Palma	179	0	0	0	179	179	198	91%	100.0%	100.0%	100.0%
Mesa Water (MW)	1,648	0	129	0	1,777	1,777	1,748	102%	100.0%	100.0%	100.0%
MW Clear	1,121	-	-	-	1,121	1,121	1,083	104%	na	na	na
MW Amber	527	-	-	-	527	527	550	96%	na	na	na
Newport Beach	1,303	0	77	275	1,655	1,655	1,585	104%	82.6%	82.6%	93.6%
Orange	1,295	0	0	1,499	2,794	2,794	2,778	101%	46.4%	46.4%	66.1%
OCWD (GAP)	133	0	0	0	133	133	180	74%	100.0%	100.0%	100.0%
Santa Ana	2,602	0	37	612	3,250	3,250	3,282	99%	81.0%	81.0%	65.3%
Seal Beach	0	0	0	354	354	354	365	97%	0.1%	0.1%	4.5%
Serrano	0	0	0	308	308	308	289	107%	0.0%	0.0%	0.0%
Tustin	523	0	0	578	1,101	1,101	1,097	100%	47.5%	47.5%	90.4%
Westminster	1,083	0	0	0	1,083	1,083	1,048	103%	100.0%	100.0%	100.0%
Yorba Linda	<u>0</u>	<u>0</u>	<u>0</u>	<u>2,115</u>	<u>2,115</u>	<u>2,115</u>	<u>2,165</u>	<u>98%</u>	<u>0.0%</u>	<u>0.0%</u>	<u>80.4%</u>
SUBTOTAL:	24,013	0	1,631	12,983	38,627	38,627	39,011	99%	65.5%	65.5%	68.8%
Other Producers (Est ~3% of Subtotal)	<u>615</u>	<u>0</u>	<u>0</u>	<u>17</u>	<u>631</u>	<u>631</u>	<u>668</u>	<u>94%</u>			
TOTAL:	24,628	0	1,631	12,999	39,258	39,258	39,679		65.5%	65.5%	68.8%
OCWD (Talbert Barrier)	0		2,684	0	2,684	2,684	2,316				
OCSA (GAP)	na		60	na	60	60	123				

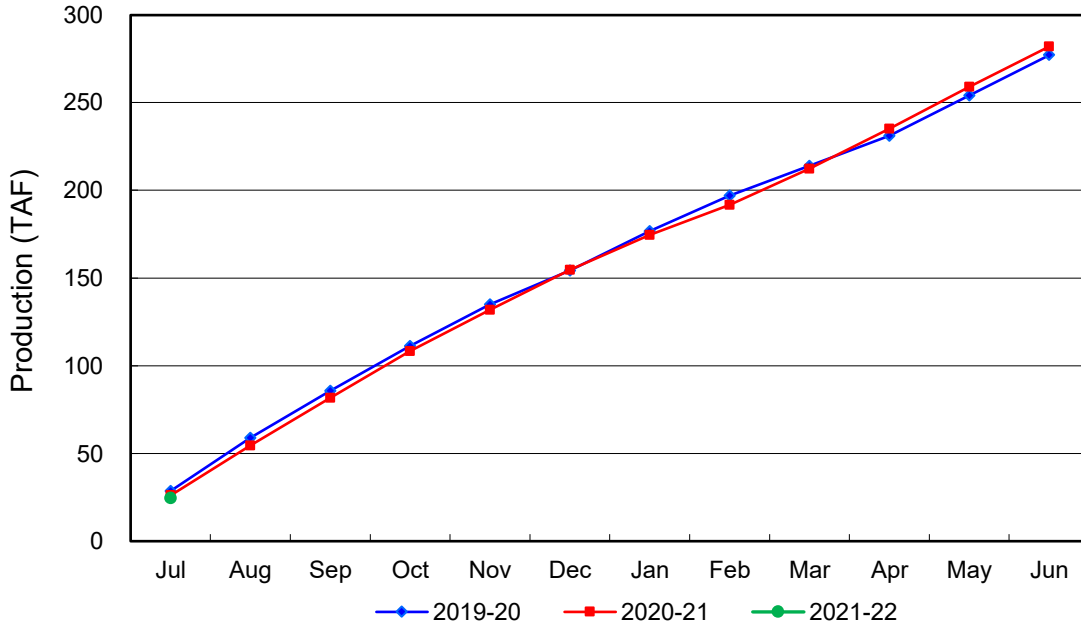
Estimated

(1) Excludes MWD CUP Withdrawals

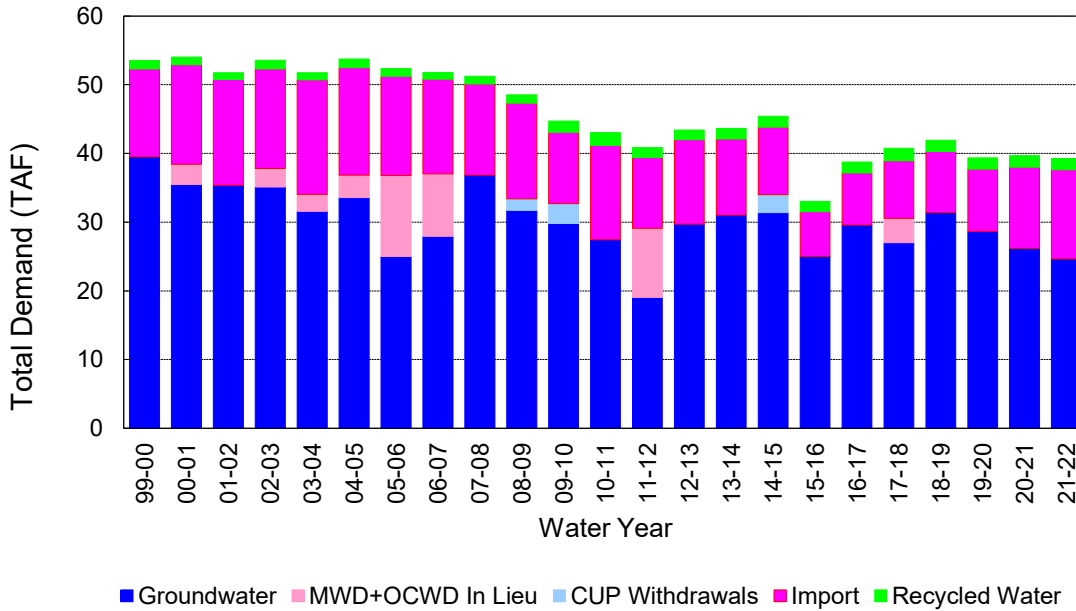
(2) Includes MWD CUP Withdrawals & In Lieu Water

8/12/2021 15:50

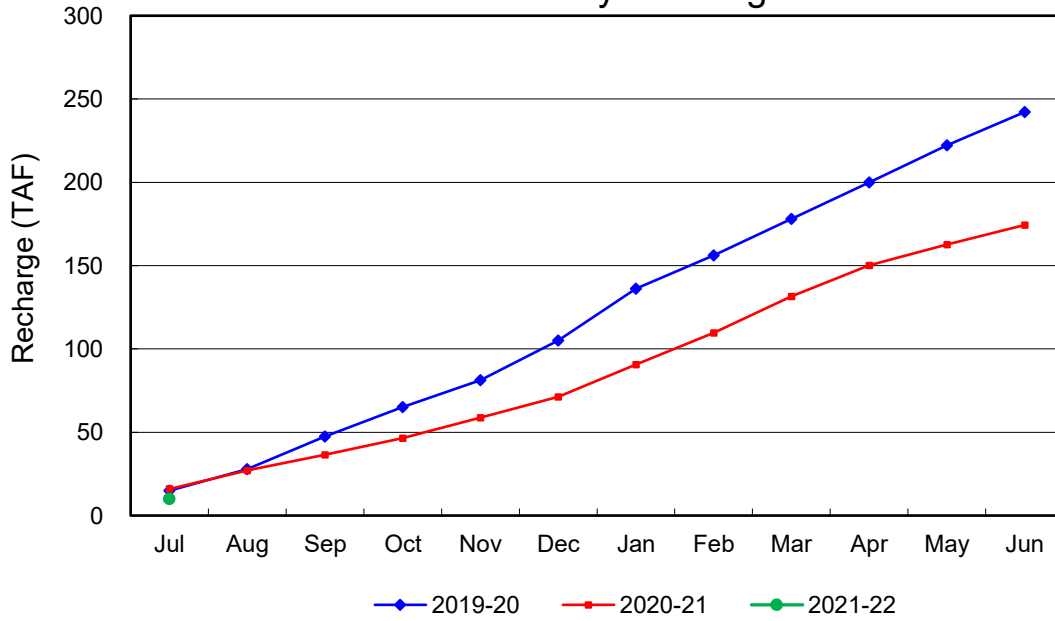
Annual Groundwater Production



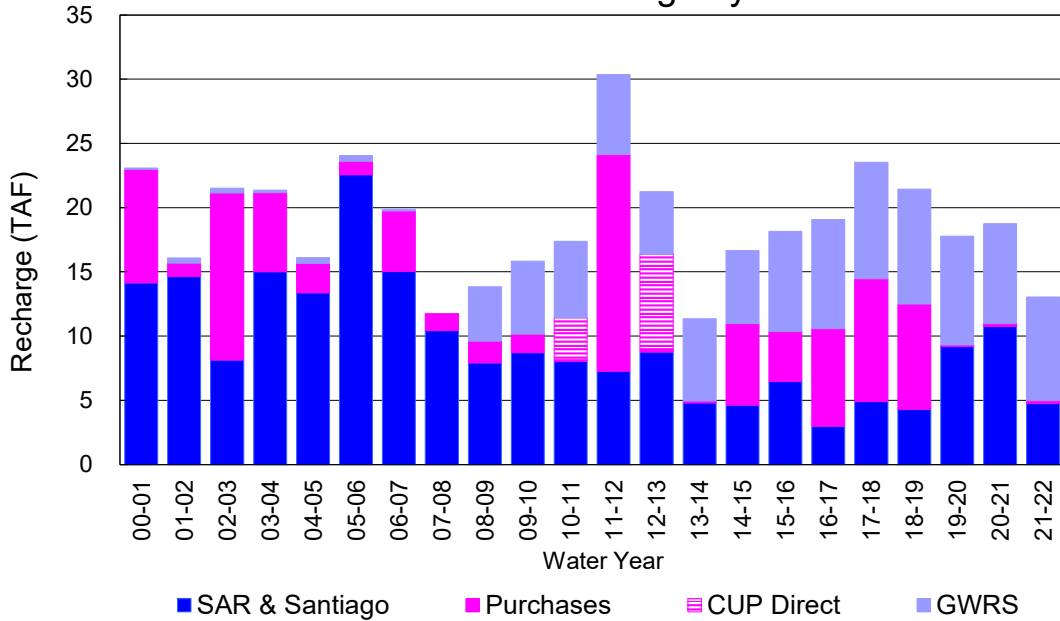
YTD Total Demand in OCWD



Annual Forebay Recharge



YTD Artificial Recharge by OCWD



RECHARGE AREAS REPORT

July 2021

	Percolation (AF)	Remarks
RIVER SYSTEM	2,299	37 cfs per day average perc
DESILTING SYSTEM	na	SAR
OFF-RIVER SYSTEM	440	
WARNER SYSTEM	1,060	SAR
OLIVE BASIN	na	Passive System
ANAHEIM LAKE	217	SAR
MINI-ANA LAKE	0	
MILLER BASIN	2,096	GWRS
KRAEMER BASIN	0	
LA PALMA BASIN	1,158	GWRS
MIRA LOMA	2,001	GWRS
LA JOLLA BASIN	15	Anaheim Lake pumped water
PLACENTIA BASIN	na	
RAYMOND BASIN	57	Anaheim Lake pumped water
FIVE COVES BASIN	na	
BURRIS BASIN	572	SAR
RIVER VIEW BASIN	0	
FLETCHER BASIN	0	
SANTIAGO BASINS	101	
SANTIAGO CREEK	0	
TOTALS	10,016	
5-YR AVERAGE	16,055	

FLOWS TO RECHARGE AREAS (AF)	
Imperial Headgates (estimated)	4,387
GWRS	5,269
OC-28 (MWD)	0
OC-28a (MWD)	0
OC-59	0
Est'd local Forebay inflow below Imperial	0
Est'd local Santiago inflow (estimated)	0
Irvine lake releases (OC-13 MWD)	0
Villa Park Dam releases (estimated)	0
Precip at Warner Basin (inches)	0.08
Precip direct to open water surfaces	3
TOTAL INFLOW	9,659

LOSSES FROM RECHARGE AREAS (AF)	
Est'd SAR flow past Chapman Ave.	0
Est'd Santiago Cr. flow to SAR	0
Est'd flows past Raymond Basin	0
Calc'd evap (inches) Estimated	7.16
Est'd evaporative losses	275
TOTAL LOSSES	275

STORAGE CHANGES (AF)			
Facility	Begin	End	Net
Deep basins	6,649	6,119	-530
Santiago Pits	2,011	1,909	-102
River			
Off-river			
Irvine Lake			
TOTAL	8,660	8,028	-632

SUMMARY (AF)	
TOTAL INFLOW	9,659
TOTAL LOSSES	275
STORAGE CHANGE	-632
CALC'D PERCOLATION	10,016

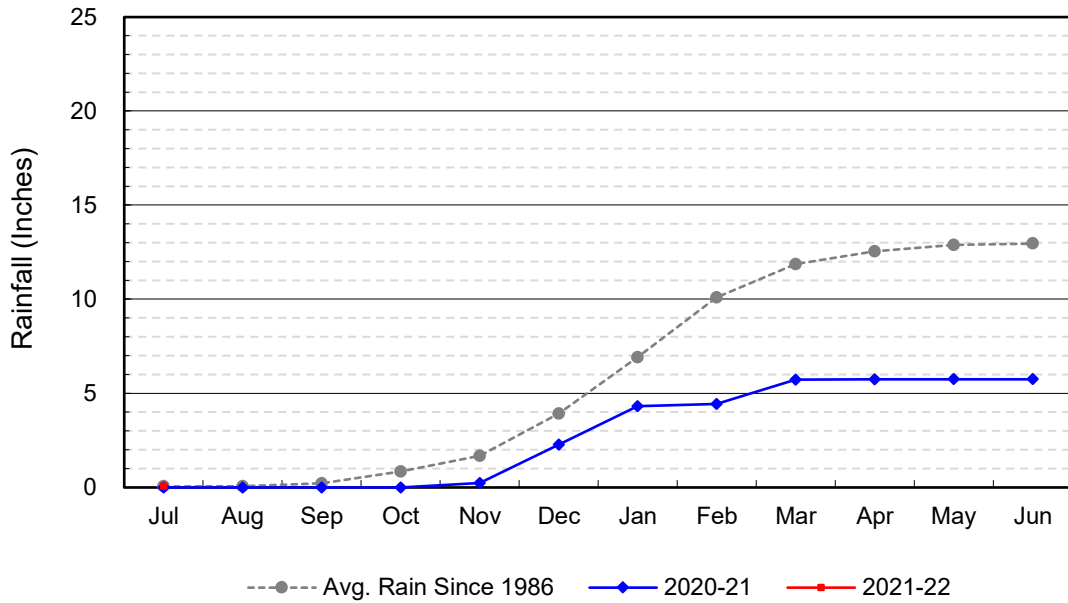
DEEP BASINS MONTHLY STATUS

July 2021

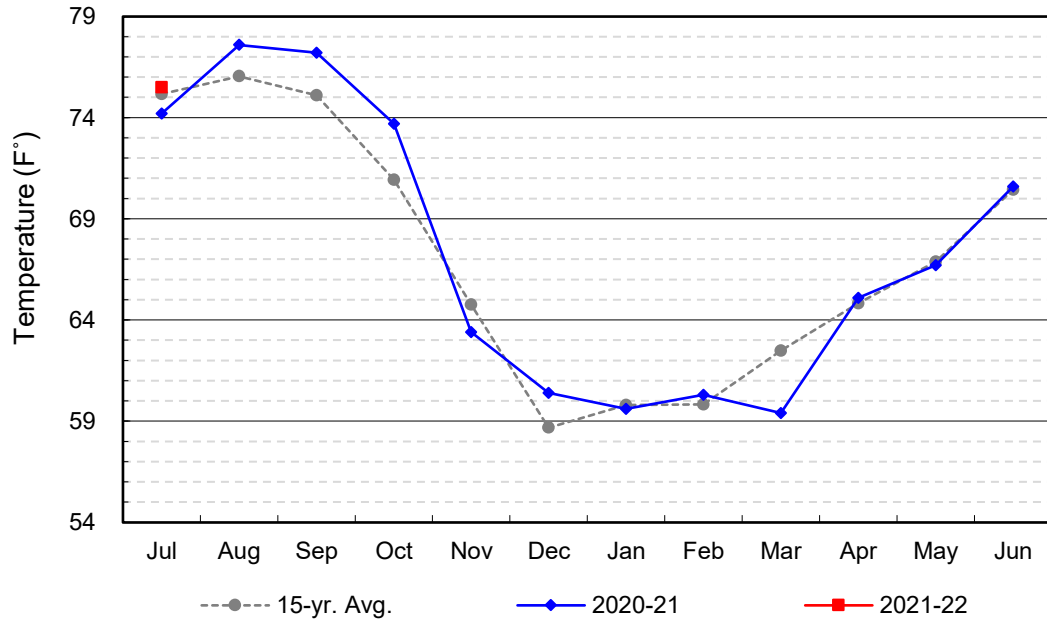
(values in acre-feet)

<i>Facility</i>	<i>Storage Start</i>	<i>Storage End</i>	<i>Maximum Storage</i>	<i>Total Perc</i>	<i>Max Perc</i>	<i>Avg Perc</i>	<i>Avg W.S. Elev</i>
Desilting Ponds	200	220	252	na	na	na	na
Fos-Huckleberry	531	536	628	na	na	na	na
Conrock Basin	562	568	661	na	na	na	na
Warner Basins	2,764	2,911	2,900	1,060	na	na	236
Olive Pit	14	3	95	na	na	na	196
Anaheim Lake	390	184	2,300	217	25	7	184
Mini-Anaheim Lk	0	0	10	0	0	0	220
Miller Basin	40	47	350	2,096	81	68	206
Kraemer Basin	0	0	1,055	0	0	0	164
La Palma Basin	55	56	101	1,158	40	37	216
Mira Loma	35	39	53	2,001	68	65	218
La Jolla Basin	0	1	20	15	15	0	199
Placentia Basin	0	0	200	na	na	na	na
Raymond Basin	0	60	200	57	na	na	na
Five Coves Basins	199	0	329	na	na	na	na
Burriss Pit	1,859	1,494	2,500	572	23	18	164
River View Basin	0	0	8	0	0	0	187
Fletcher Basin	0	0	15	0	0	0	184
Santiago (Bond)	1,194	1,147	8,312	101	10	3	186
Santiago (Blu Dia)	817	762	5,259	-	-	-	-
Totals	8,660	8,028	25,247	7,277			
Prado Dam	1	25	25,000				

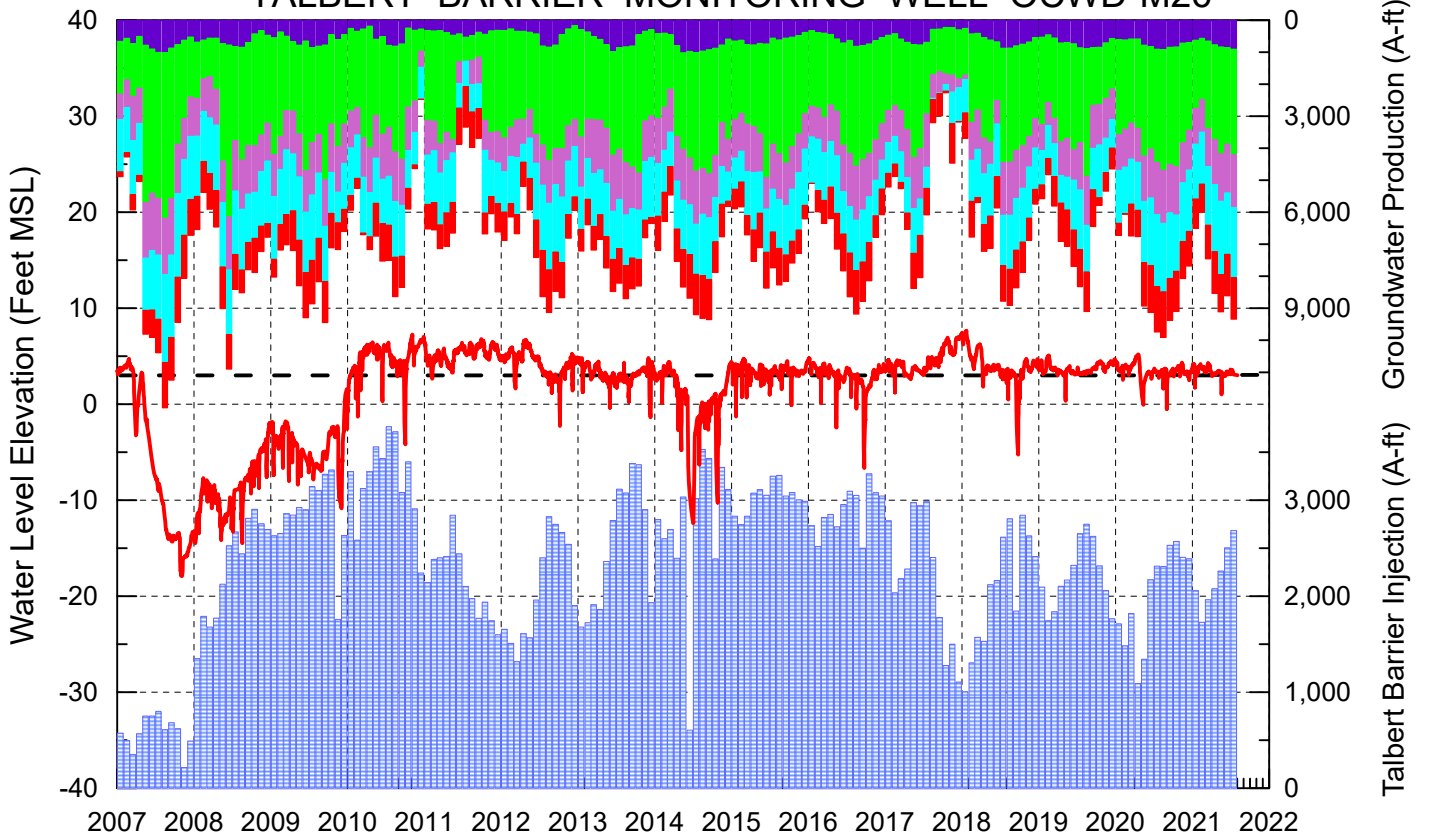
Cumulative Anaheim Field HQ Rainfall



Temperature at Santa Ana Fire Station



TALBERT BARRIER MONITORING WELL OCWD-M26



- Talbert/Lambda Aquifer Mergence Zone Perforated Interval: 71 - 135 ft. bgs
- ▨ Talbert Barrier Injection
- ▨ Fountain Valley Groundwater Production
- ▨ IRWD Groundwater Production
- ▨ Mesa Water Groundwater Production
- ▨ Huntington Beach Groundwater Production
- ▨ Newport Beach Groundwater Production
- - - Protective Level to Prevent Seawater Intrusion

