

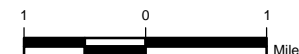
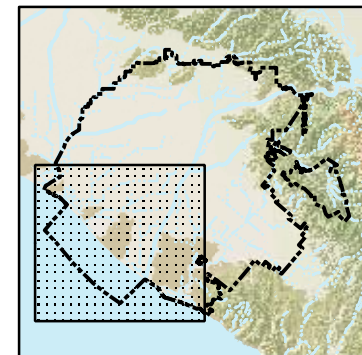
JUNE 2007

Groundwater Elevation Contours for the Principal Aquifer

*Southwest Quadrant
of OCWD*

June 2007 Water Levels Groundwater Elevations (Feet, MSL)

- 110 - -10
- 0
- 20 - 360
- Orange County Water District



Reproduced with permission granted by THOMAS BROS. MAPS ©.
© Thomas Bros. Maps. All rights reserved.

