

WATER RESOURCES SUMMARY

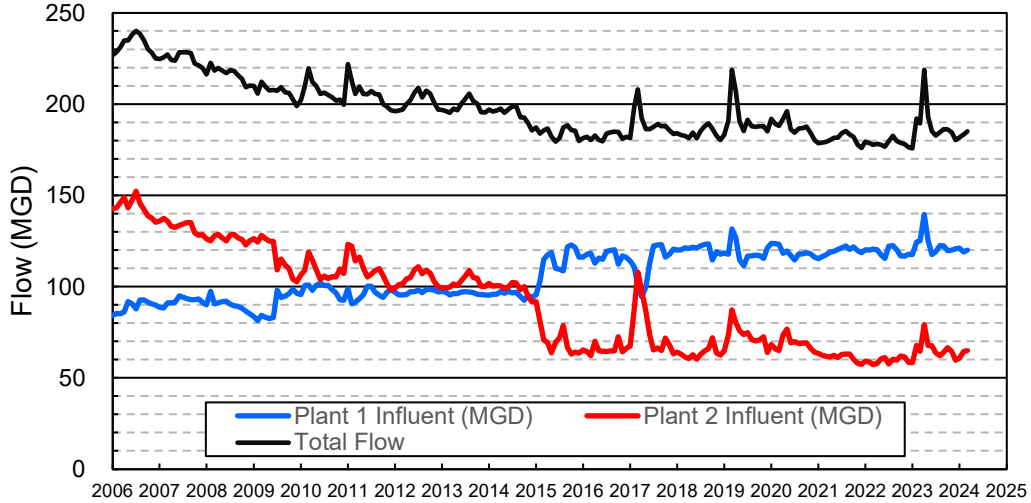
February 2024

INFLOWS & OUTFLOWS (acre-feet)	Total for Month	Year to Date - This Year Last Year	
BASIN SUPPLIES			
Water Purchases from MWD (excludes In Lieu)	0	7	16,864
Water into MWD Storage Account (excludes In Lieu)	0	0	0
SAR & Santiago Creek Flows (accounts for storage to/from recharge facilities)	115,732	207,473	123,129
GWRS Water to Forebay	7,758	62,671	49,413
GWRS Water to Mid-Basin Injection Wells	475	4,788	5,086
GWRS Water to Talbert Barrier	1,058	12,428	14,527
OC-44 and F. Valley Water to Talbert Barrier	0	7	18
Alamitos Barrier Water	99	1,356	1,811
Incidental Recharge (estimated)	4,000	15,700	16,400
Evaporation from Recharge Basins	(252)	(2,492)	(1,788)
River Flow Lost to Ocean	<u>(93,829)</u>	<u>(95,202)</u>	<u>(41,463)</u>
Total Groundwater Recharge	35,041	206,735	183,996
WATER PRODUCTION			
Groundwater Production	17,025	184,463	160,946
MWD Storage Program Withdrawals	<u>0</u>	<u>0</u>	<u>0</u>
Total Groundwater Production	17,025	184,463	160,946
BASIN BALANCE			
Change in Groundwater Storage	18,017	22,273	23,050
Change in Groundwater Storage excluding MWD Stored Water	18,017	22,273	23,050
Accumulated Overdraft	-----	166,730	234,953
Accumulated Overdraft excluding MWD Storage	-----	166,730	234,953
IN LIEU WATER			
OCWD In Lieu Purchases (MWD Cyclic Storage)	0	0	0
MWD In Lieu Storage	<u>0</u>	<u>0</u>	<u>0</u>
Total In Lieu	0	0	0
OTHER KEY INFORMATION			
1. MWD Water Deliveries to Producers	2,162	41,294	68,319
2. Basin Production Percentage	88.7%	81.7%	70.2%
3. Total Water Demand	20,093	239,427	243,063
4. Total GWRS Production	9,293	79,925	69,074
5. Green Acres Project Water	80	2,106	2,430
6. SAR Water Quality			
- Total Dissolved Solids (TDS) of SAR below Prado Dam (ppm)	272	-----	348
- Total Nitrogen of SAR below Prado Dam (ppm)	1.8	-----	1.6
7. Month-End Water Storage Behind Prado Dam	19,506	-----	20,261
8. Month-End Water Storage in Recharge Facilities	23,986	-----	23,311
9. Water Storage Change in Recharge Facilities	4,542	2,736	12,435
10. Total Artificial Recharge	31,041	191,035	167,596
11. Monthly Mean Temperature at Santa Ana Fire Station (°F)	59.0	-----	56.7
12. Rainfall at FHQ (inches)	9.81	16.07	17.32

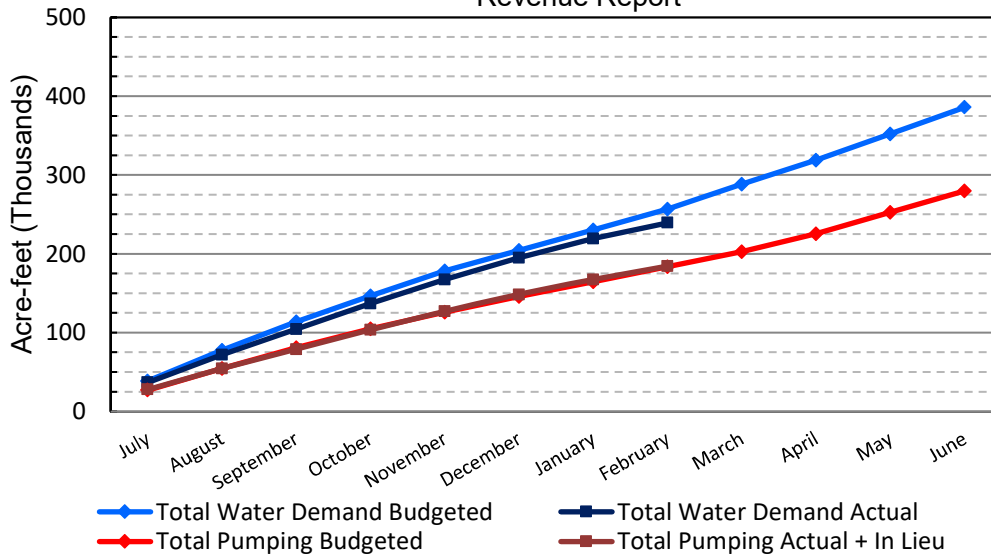
*** Note: Data are preliminary, subject to change

3/14/2024

Orange County Sanitation District Influent Flows Report

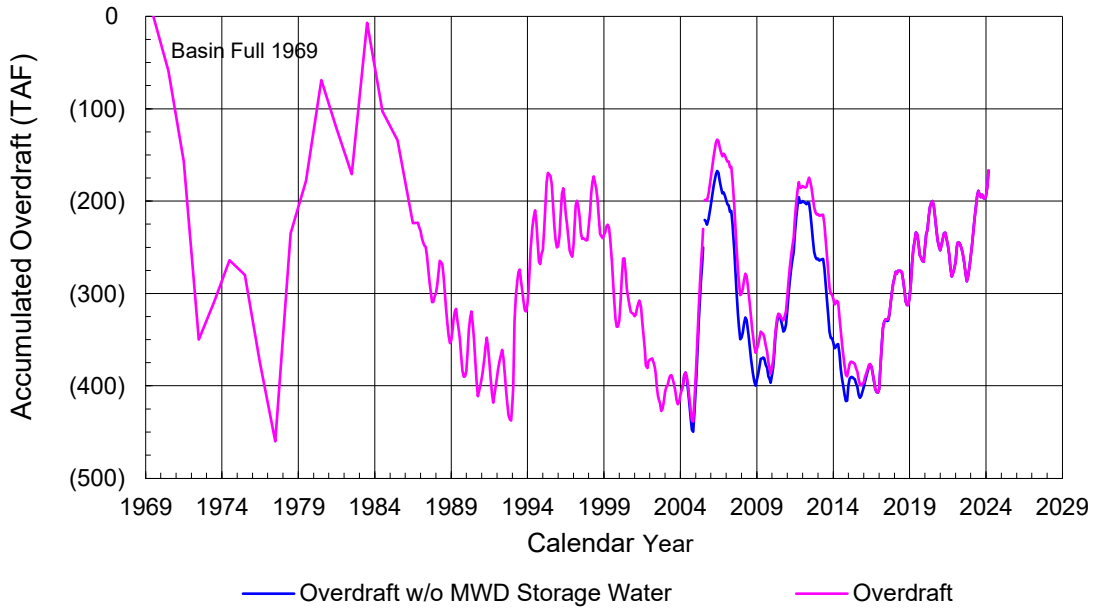


2023-24 Water Demands/Groundwater Pumping + In Lieu/RA Revenue Report

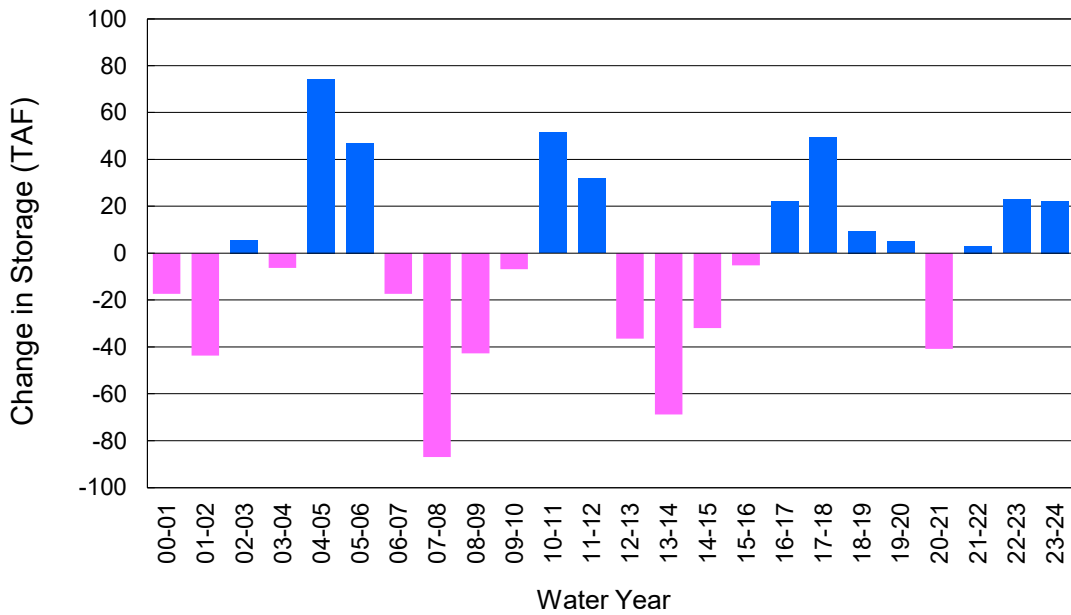


	Monthly		Accumulated Total for the Year			
	Budget	Actual	Budget	Actual	Difference	Percent
Total Water Demand	26,600	20,093	256,800	239,427	-17,373	93.23%
Total Pumping + In Lieu	19,400	17,025	183,800	184,463	663	100.36%
RA Revenue	\$12,105,600	\$10,623,371	\$114,691,200	\$115,104,775	\$413,575	100.36%

Accumulated Overdraft



YTD Change in Groundwater Storage in OCWD



PRODUCERS WATER USAGE SUMMARY

February 2024

(AF except BPP)

WATER AGENCY	Ground-water (1)	In Lieu	Reclaimed Water	Total Import (2)	Total Demand	2023-24 YTD Demand	2022-23 YTD Demand	YTD % Diff Demand	FEB 2024 BPP	2023-24 YTD BPP	2022-23 YTD BPP
Anaheim	2,293	0	0	691	2,984	35,371	36,457	97%	76.8%	54.2%	25.6%
Buena Park	711	0	0	0	711	8,028	8,161	98%	100.0%	92.0%	85.4%
East Orange County	0	0	0	35	35	518	516	100%	0.9%	0.5%	0.3%
Fountain Valley	464	0	5	0	469	6,084	6,034	101%	100.0%	100.0%	100.0%
Fullerton	882	0	0	195	1,077	13,600	14,353	95%	81.9%	76.0%	76.4%
Garden Grove	1,298	0	0	0	1,298	13,988	13,509	104%	100.0%	100.0%	73.1%
Golden State	842	0	0	310	1,152	13,959	13,822	101%	73.1%	63.0%	57.2%
West OC System	614	-	-	145	759	8,595	8,438	102%	na	na	na
East OC System	227	-	-	165	393	5,364	5,384	100%	na	na	na
Huntington Beach	1,294	0	0	80	1,374	15,919	16,075	99%	94.2%	85.5%	62.6%
Irvine Ranch	2,652	0	884	0	3,536	41,732	41,174	101%	100.0%	99.9%	99.7%
DRWF Clear	1,878	-	-	-	1,878	19,325	17,675	109%	na	na	na
DRWF Color	265	-	-	-	265	5,217	5,616	93%	na	na	na
Laguna Beach	0	0	0	165	165	2,020	2,075	na	0.0%	0.0%	21.1%
La Palma	87	0	0	1	88	1,094	1,105	99%	98.8%	100.0%	99.6%
Mesa Water (MW)	906	0	4	0	910	10,496	10,612	99%	100.0%	100.0%	99.9%
MW Clear	745	-	-	-	745	8,600	7,869	109%	na	na	na
MW Amber	161	-	-	-	161	1,423	2,220	64%	na	na	na
Newport Beach	408	0	1	240	648	8,458	8,922	95%	63.0%	81.1%	77.9%
Orange	1,140	0	0	103	1,243	15,671	15,867	99%	91.7%	87.4%	77.3%
OCWD (GAP)	97	0	0	0	97	1,129	944	120%	100.0%	100.0%	100.0%
Santa Ana	1,770	0	12	250	2,031	20,782	20,914	99%	87.6%	84.7%	68.2%
Seal Beach	174	0	0	0	175	1,978	1,910	104%	99.8%	99.7%	69.0%
Serrano	3	0	0	73	76	1,579	2,035	78%	3.8%	42.5%	66.7%
Tustin	505	0	0	15	520	6,599	6,623	100%	97.1%	72.1%	51.0%
Westminster	631	0	0	0	631	6,609	6,629	100%	100.0%	100.0%	96.7%
Yorba Linda	<u>667</u>	<u>0</u>	<u>0</u>	<u>1</u>	<u>668</u>	<u>11,581</u>	<u>11,602</u>	<u>100%</u>	<u>99.9%</u>	<u>85.8%</u>	<u>83.9%</u>
SUBTOTAL:	16,823	0	907	2,159	19,890	237,194	239,339	99%	88.7%	81.7%	70.2%
Other Producers (Est ~3% of Subtotal)	<u>201</u>	<u>0</u>	<u>0</u>	<u>3</u>	<u>204</u>	<u>2,233</u>	<u>3,724</u>	<u>60%</u>			
TOTAL:	17,025	0	907	2,162	20,093	239,427	243,063		88.7%	81.7%	70.2%
OCWD (Talbert Barrier)	0		1,058	0	1,058	12,435	14,545				
OCSD (GAP)	na		58	na	58	677	736				

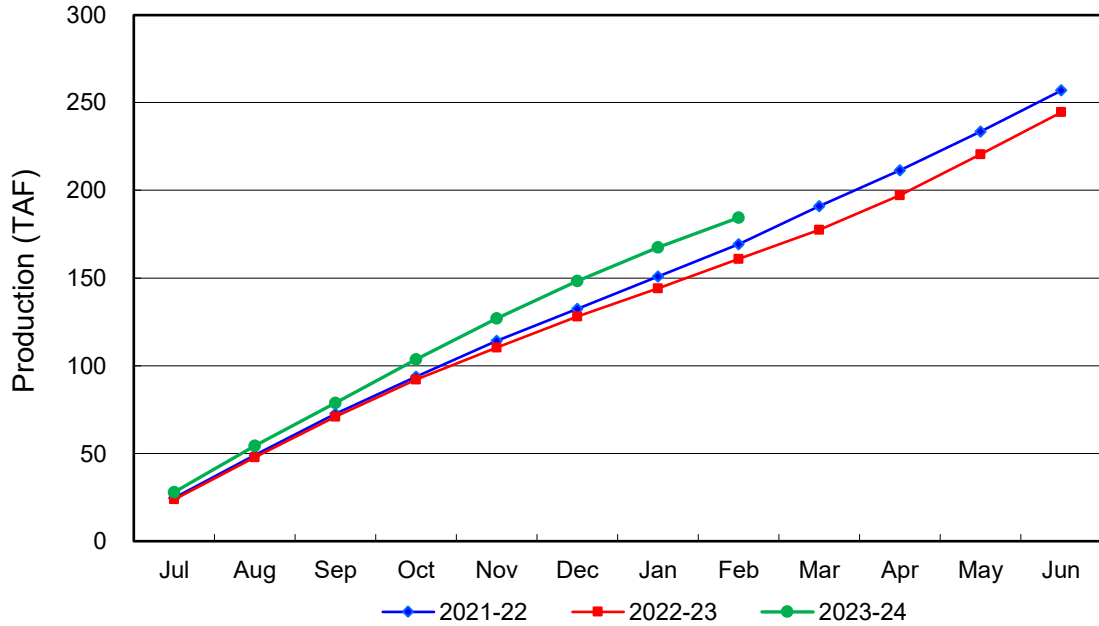
Estimated

(1) Excludes MWD CUP Withdrawals

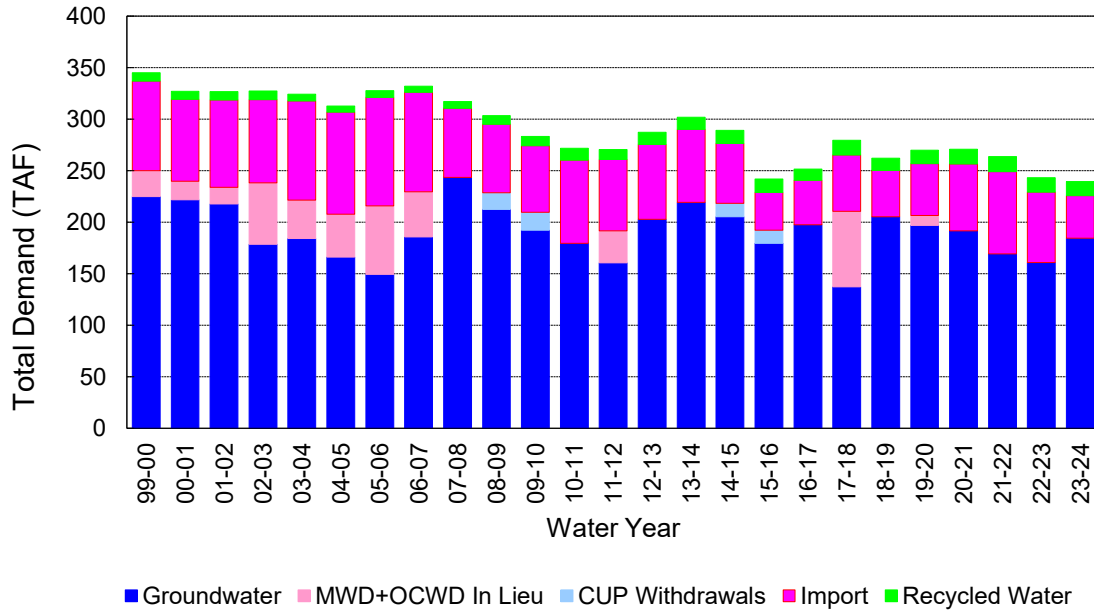
(2) Includes MWD CUP Withdrawals & In Lieu Water

3/14/2024 13:14

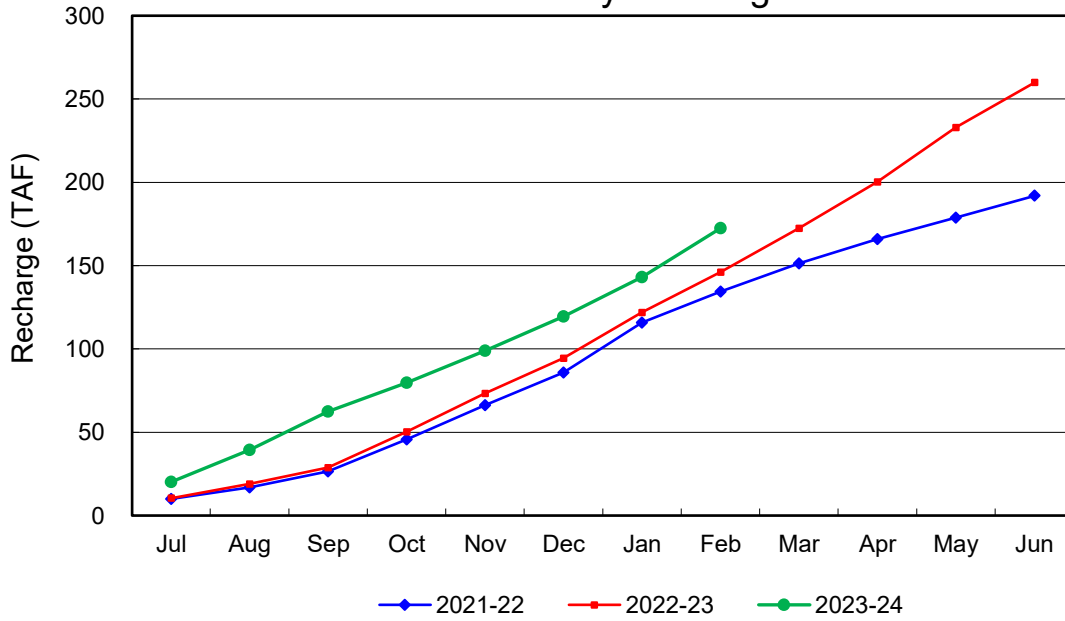
Annual Groundwater Production



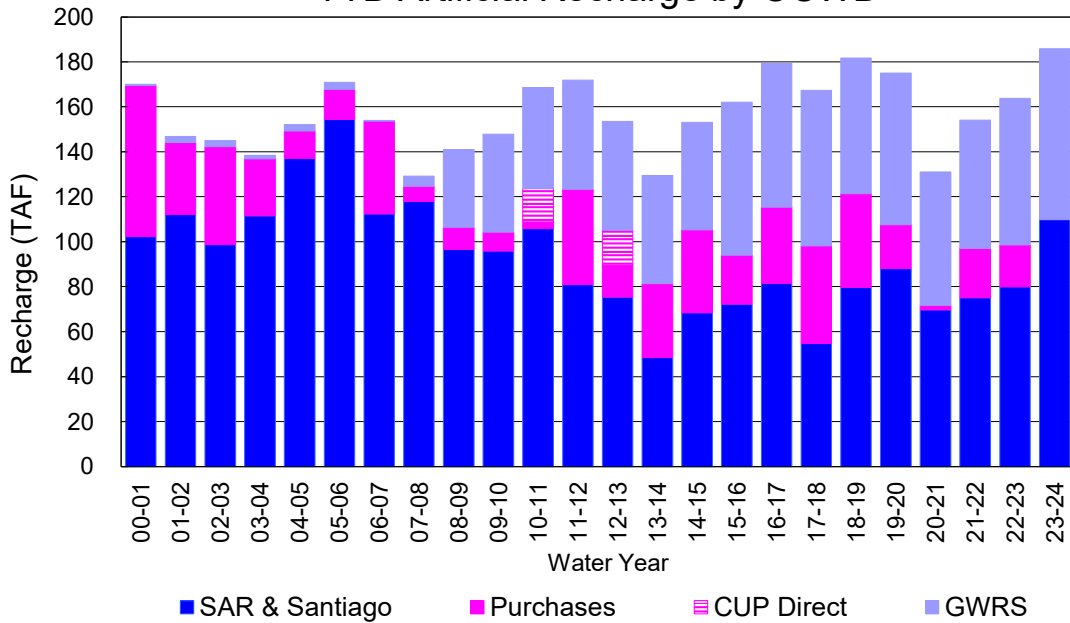
YTD Total Demand in OCWD



Annual Forebay Recharge



YTD Artificial Recharge by OCWD



RECHARGE AREAS REPORT

February 2024

	Percolation (AF)	Remarks
RIVER SYSTEM	5,639	98 cfs per day average perc
DESILTING SYSTEM	na	SAR
OFF-RIVER SYSTEM	1,124	SAR
WARNER SYSTEM	425	SAR
OLIVE BASIN	na	Passive System
ANAHEIM LAKE	3,013	SAR
MINI-ANA LAKE	313	SAR
MILLER BASIN	1,272	SAR
KRAEMER BASIN	3,859	GWRS, SAR
LA PALMA BASIN	3,945	GWRS
MIRALOMA BASIN	2,012	GWRS
LA JOLLA BASIN	289	SAR
PLACENTIA BASIN	na	
RAYMOND BASIN	0	
FIVE COVES BASIN	na	SAR
BURRIS BASIN	1,033	SAR
RIVER VIEW BASIN	152	SAR, Burris Pumping
FLETCHER BASIN	55	Local Runoff
SANTIAGO BASINS	6,059	SAR, Burris Pumping, Local Runoff
SANTIAGO CREEK	219	SAR, Burris Pumping, Local Runoff
TOTALS	29,409	
5-YR AVERAGE	22,296	

FLOWS TO RECHARGE AREAS (AF)	
Imperial Headgates (estimated)	102,454
GWRS	7,758
OC-28 (MWD)	0
OC-28a (MWD)	0
OC-59	0
Est'd local Forebay inflow below Imperial	13,004
Est'd local Santiago inflow (estimated)	1,335
Irvine lake releases (OC-13 MWD)	2,658
Villa Park Dam releases (estimated)	0
Precip at Warner Basin (inches)	9.81
Precip direct to open water surfaces	823
TOTAL INFLOW	128,032

LOSSES FROM RECHARGE AREAS (AF)	
Est'd SAR flow past Chapman Ave.	92,927
Est'd Santiago Cr. flow to SAR	902
Est'd flows past Raymond Basin	0
Calc'd evap (inches) Estimated	3.01
Est'd evaporative losses	252
TOTAL LOSSES	94,081

STORAGE CHANGES (AF)			
Facility	Begin	End	Net
Deep basins	8,630	10,473	1,843
Santiago Pits	10,814	13,513	2,699
River			
Off-river			
Irvine Lake			
TOTAL	19,444	23,986	4,542

SUMMARY (AF)	
TOTAL INFLOW	128,032
TOTAL LOSSES	94,081
STORAGE CHANGE	4,542
CALC'D PERCOLATION	29,409

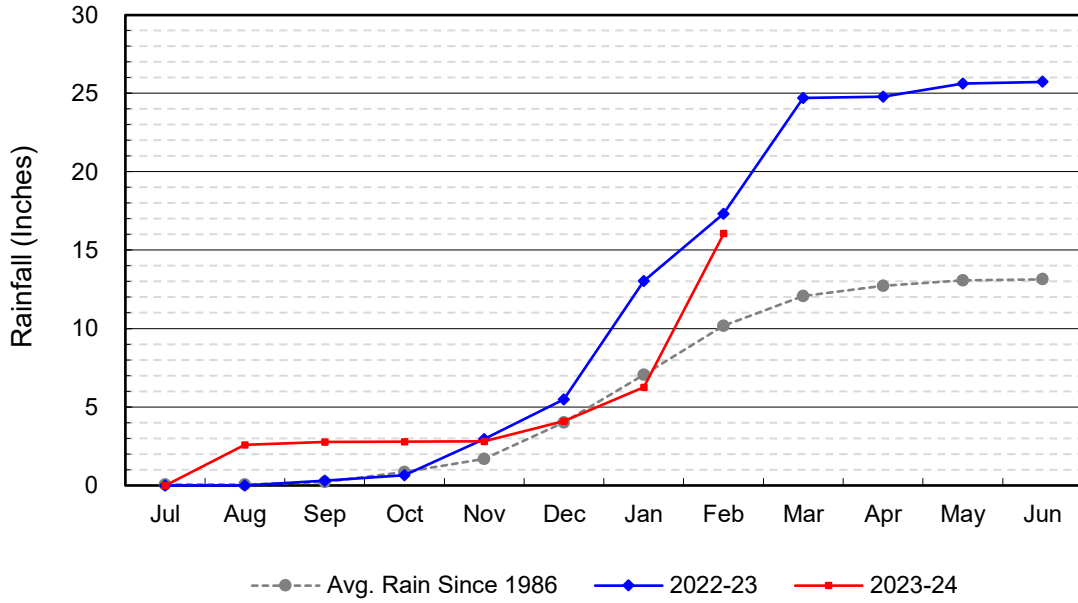
DEEP BASINS MONTHLY STATUS

February 2024

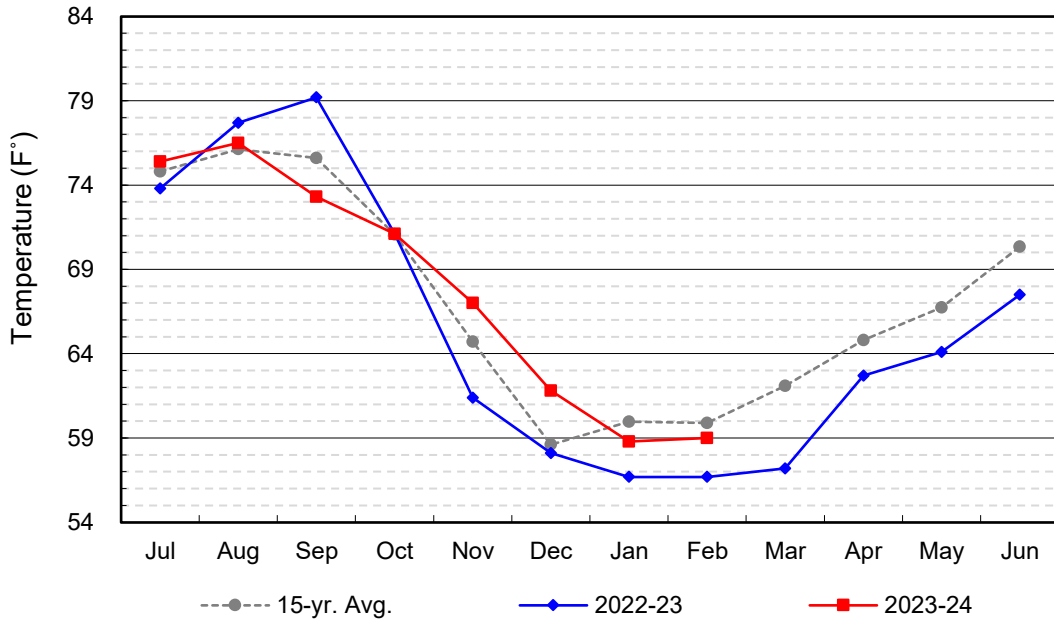
(values in acre-feet)

<i>Facility</i>	<i>Storage Start</i>	<i>Storage End</i>	<i>Maximum Storage</i>	<i>Total Perc</i>	<i>Max Perc</i>	<i>Avg Perc</i>	<i>Avg W.S. Elev</i>
Desilting Ponds	230	230	252	na	na	na	na
Fos-Huckleberry	562	583	628	na	na	na	na
Conrock Basin	603	604	661	na	na	na	na
Warner Basins	2,915	2,917	2,900	425	na	na	238
Olive Pit	45	49	95	na	na	na	211
Anaheim Lake	1,112	2,062	2,300	3,013	127	106	216
Mini-Anaheim Lk	6	2	10	313	20	11	221
Miller Basin	213	241	350	1,272	66	45	213
Kraemer Basin	368	1,071	1,055	3,859	174	133	209
La Palma Basin	94	88	101	3,945	160	136	219
Miraloma Basin	43	43	53	2,012	82	69	220
La Jolla Basin	0	18	20	289	17	10	202
Placentia Basin	0	0	200	na	na	na	na
Raymond Basin	0	0	200	0	na	na	na
Five Coves Basins	249	221	329	na	na	na	na
Burriss Pit	2,180	2,327	2,500	1,033	51	36	169
River View Basin	2	7	8	152	12	5	188
Fletcher Basin	8	10	15	55	5	2	189
Santiago (Bond)	7,012	8,281	8,312	6,059	255	213	283
Santiago (Blu Dia)	3,802	5,232	5,259	-	-	-	-
Totals	19,444	23,986	25,247	22,427			
Prado Dam	738	19,506	20,000				

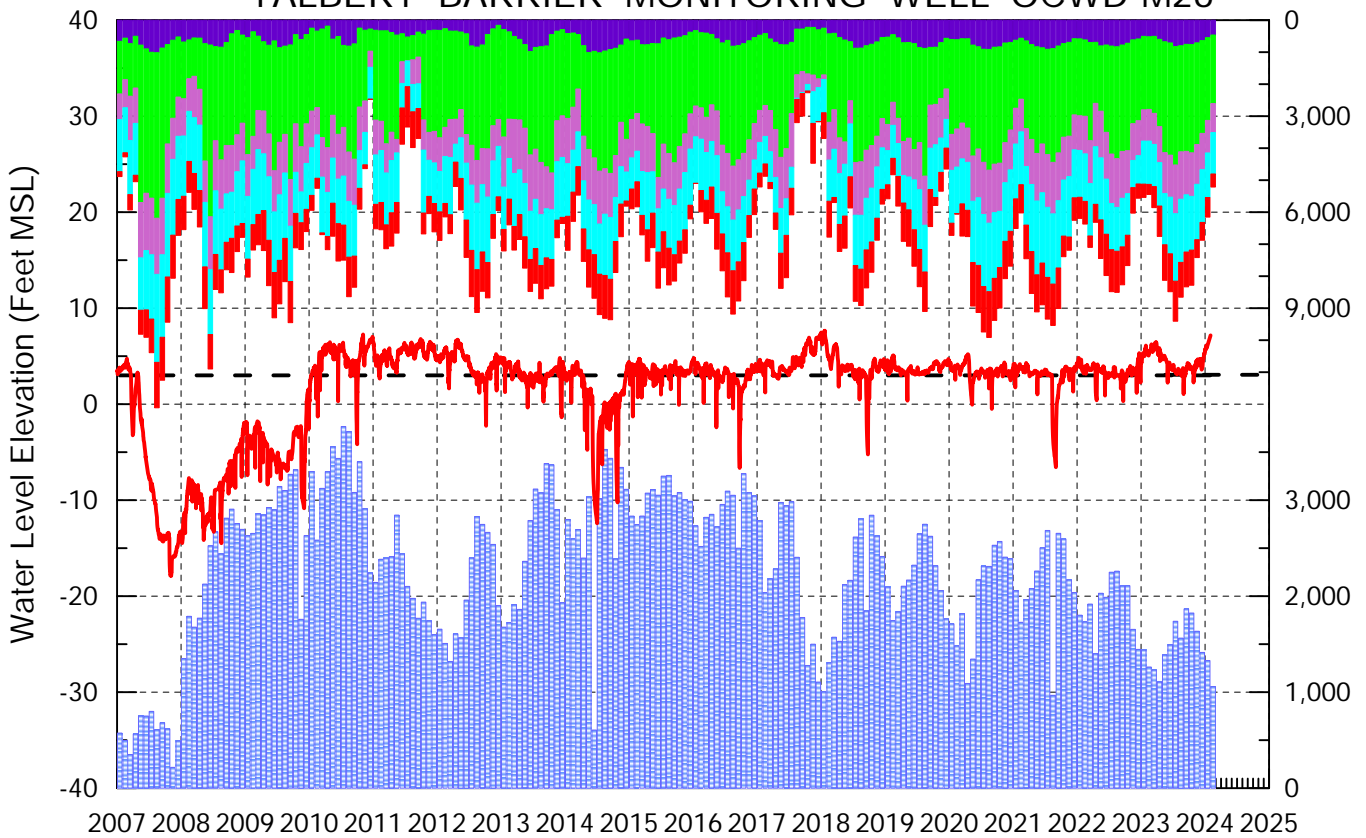
Cumulative Anaheim Field HQ Rainfall



Temperature at Santa Ana Fire Station



TALBERT BARRIER MONITORING WELL OCWD-M26



- Talbert/Lambda Aquifer Mergence Zone
Perforated Interval: 71 - 135 ft. bgs
- ▨ Talbert Barrier Injection
- Protective Level to Prevent Seawater Intrusion
- Fountain Valley Groundwater Production
- IRWD Groundwater Production
- Mesa Water Groundwater Production
- Huntington Beach Groundwater Production
- Newport Beach Groundwater Production

