

WATER RESOURCES SUMMARY

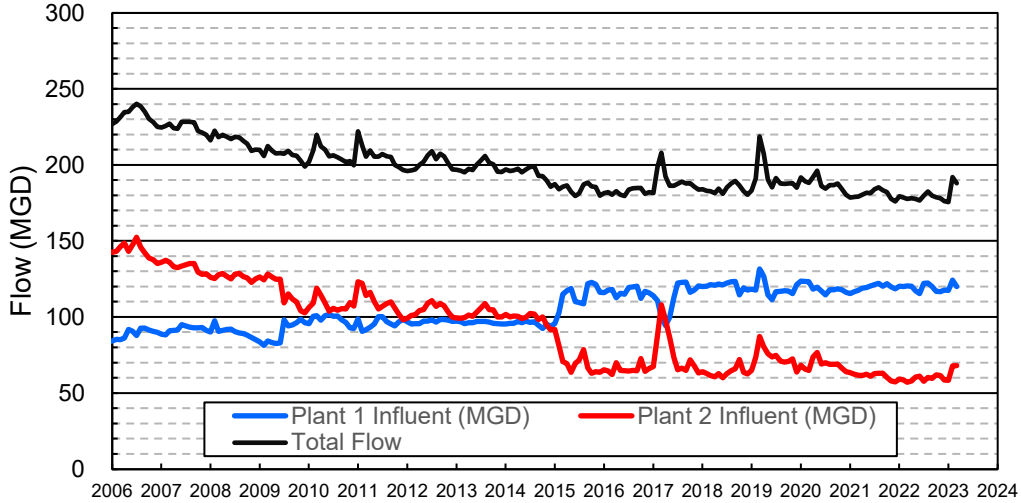
February 2023

INFLOWS & OUTFLOWS (acre-feet)	Total for Month	Year to Date - This Year Last Year	
BASIN SUPPLIES			
Water Purchases from MWD (excludes In Lieu)	0	16,864	20,003
Water into MWD Storage Account (excludes In Lieu)	0	0	0
SAR & Santiago Creek Flows (accounts for storage to/from recharge facilities)	27,972	123,129	93,034
GWRS Water to Forebay	7,045	49,413	39,358
GWRS Water to Mid-Basin Injection Wells	560	5,086	5,238
GWRS Water to Talbert Barrier	1,262	14,527	16,644
OC-44 and F. Valley Water to Talbert Barrier	0	18	6
Alamitos Barrier Water	209	1,847	1,909
Incidental Recharge (estimated)	5,500	23,400	14,136
Evaporation from Recharge Basins	(246)	(1,788)	(1,619)
River Flow Lost to Ocean	<u>(10,465)</u>	<u>(41,463)</u>	<u>(16,269)</u>
Total Groundwater Recharge	31,837	191,033	172,439
WATER PRODUCTION			
Groundwater Production	16,943	160,768	169,348
MWD Storage Program Withdrawals	<u>0</u>	<u>0</u>	<u>0</u>
Total Groundwater Production	16,943	160,768	169,348
BASIN BALANCE			
Change in Groundwater Storage	14,894	30,265	3,091
Change in Groundwater Storage excluding MWD Stored Water	14,894	30,265	3,091
Accumulated Overdraft	-----	227,738	244,911
Accumulated Overdraft excluding MWD Storage	-----	227,738	244,911
IN LIEU WATER			
OCWD In Lieu Purchases (MWD Cyclic Storage)	0	0	0
MWD In Lieu Storage	<u>0</u>	<u>0</u>	<u>0</u>
Total In Lieu	0	0	0
OTHER KEY INFORMATION			
1. MWD Water Deliveries to Producers	5,174	68,318	79,663
2. Basin Production Percentage	76.6%	70.2%	68.0%
3. Total Water Demand	23,534	242,884	263,574
4. Total GWRS Production	8,870	69,074	61,277
5. Green Acres Project Water	179	2,430	2,391
6. SAR Water Quality			
- Total Dissolved Solids (TDS) of SAR below Prado Dam (ppm)	348	-----	728
- Total Nitrogen of SAR below Prado Dam (ppm)	NA	-----	5.2
7. Month-End Water Storage Behind Prado Dam	20,261	-----	5
8. Month-End Water Storage in Recharge Facilities	23,311	-----	16,764
9. Water Storage Change in Recharge Facilities	524	12,435	8,104
10. Total Artificial Recharge	26,337	167,633	158,303
11. Monthly Mean Temperature at Santa Ana Fire Station (°F)	56.7	-----	62.8
12. Rainfall at FHQ (inches)	4.29	17.32	5.90

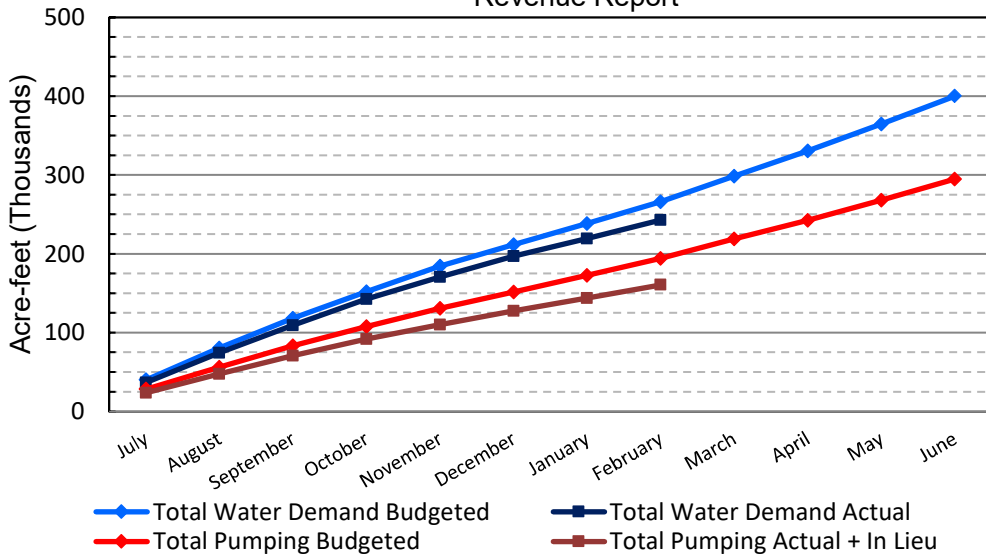
*** Note: Data are preliminary, subject to change

3/9/2023

Orange County Sanitation District Influent Flows Report

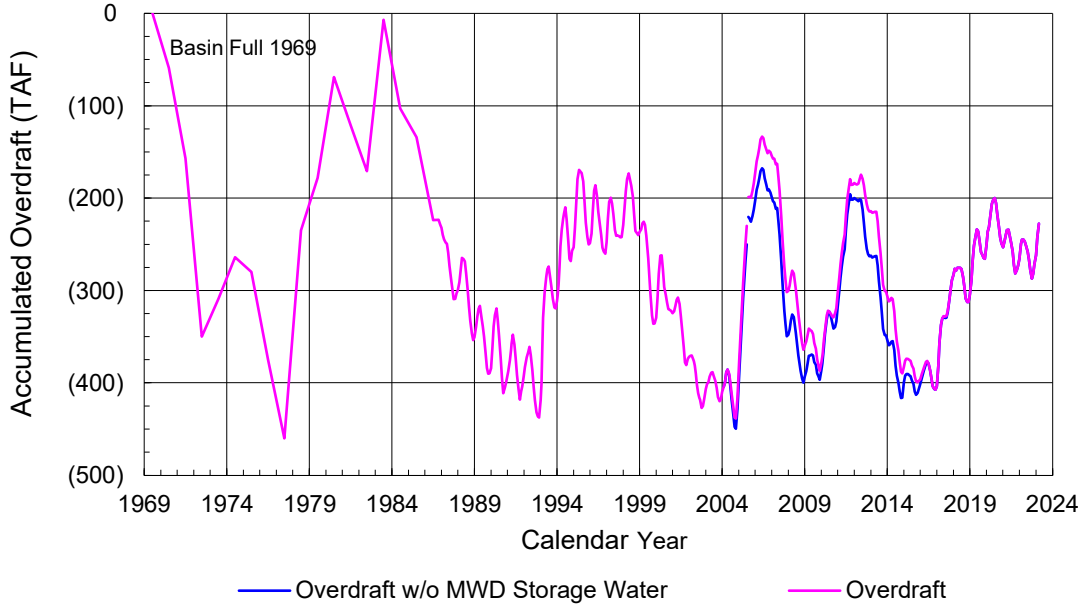


2022-23 Water Demands/Groundwater Pumping + In Lieu/RA Revenue Report

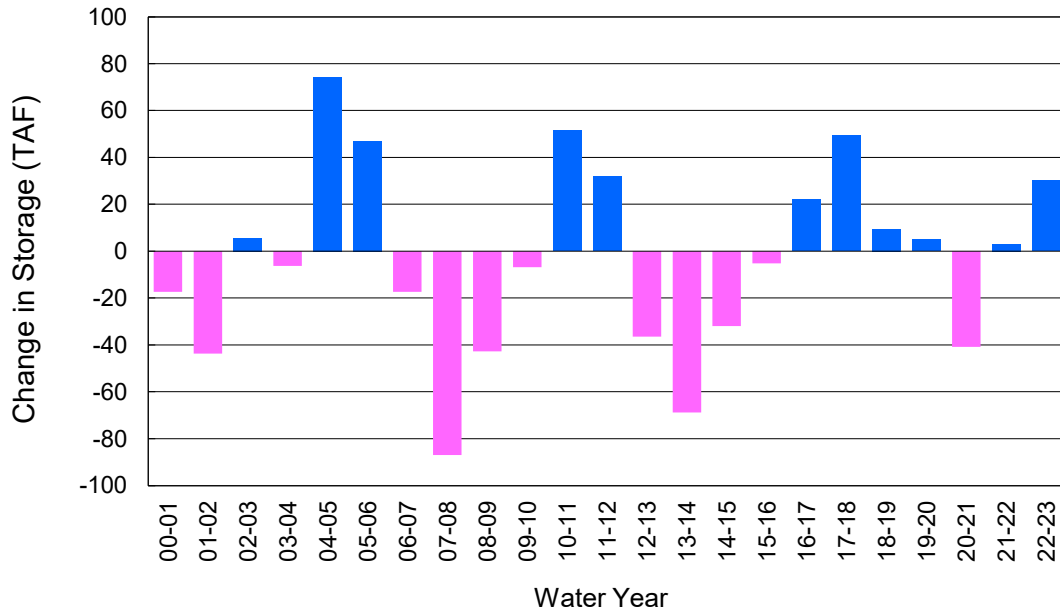


	Monthly		Accumulated Total for the Year			
	Budget	Actual	Budget	Actual	Difference	Percent
Total Water Demand	27,600	23,534	265,900	242,884	-23,016	91.34%
Total Pumping + In Lieu	21,500	16,943	194,300	160,768	-33,532	82.74%
RA Revenue	\$9,933,000	\$7,827,554	\$89,766,600	\$74,275,047	-\$15,491,553	82.74%

Accumulated Overdraft



YTD Change in Groundwater Storage in OCWD



PRODUCERS WATER USAGE SUMMARY

February 2023

(AF except BPP)

WATER AGENCY	Ground-water (1)	In Lieu	Reclaimed Water	Total Import (2)	Total Demand	2022-23 YTD Demand	2021-22 YTD Demand	YTD % Diff Demand	FEB 2023 BPP	2022-23 YTD BPP	2021-22 YTD BPP
Anaheim	946	0	0	2,723	3,670	36,410	39,477	92%	25.8%	25.5%	29.8%
Buena Park	695	0	0	66	762	8,161	8,695	94%	91.3%	85.4%	84.2%
East Orange County	0	0	0	45	45	516	608	85%	0.7%	0.3%	0.3%
Fountain Valley	519	0	36	0	555	6,034	6,740	90%	100.0%	100.0%	100.0%
Fullerton	1,034	0	0	297	1,331	14,353	15,746	91%	77.7%	76.4%	75.8%
Garden Grove	1,295	0	0	0	1,295	13,509	14,632	92%	100.0%	73.1%	84.6%
Golden State	669	0	0	626	1,295	13,822	15,371	90%	51.7%	57.2%	62.5%
West OC System	665	-	-	136	801	8,438	9,303	91%	na	na	na
East OC System	4	-	-	490	493	5,384	6,069	89%	na	na	na
Huntington Beach	1,353	0	0	169	1,522	16,075	17,280	93%	88.9%	62.6%	84.3%
Irvine Ranch	2,876	0	1,335	0	4,212	41,296	44,001	94%	100.0%	99.7%	98.8%
DRWF Clear	1,615	-	-	-	1,615	17,675	18,961	93%	na	na	na
DRWF Color	654	-	-	-	654	5,616	4,244	132%	na	na	na
Laguna Beach	101	0	0	90	191	2,075	2,176	na	52.9%	21.1%	0.0%
La Palma	105	0	0	0	105	1,105	1,094	101%	100.0%	99.6%	94.4%
Mesa Water (MW)	990	0	24	0	1,014	10,612	11,489	92%	100.0%	99.9%	98.1%
MW Clear	976	-	-	-	976	7,869	8,745	90%	na	na	na
MW Amber	15	-	-	-	15	2,220	1,963	113%	na	na	na
Newport Beach	314	0	11	411	736	8,922	9,526	94%	43.3%	77.9%	75.8%
Orange	1,475	0	0	15	1,490	15,867	17,705	90%	99.0%	77.3%	52.0%
OCWD (GAP)	100	0	0	0	100	944	984	96%	100.0%	100.0%	100.0%
Santa Ana	1,868	0	11	309	2,187	20,914	21,936	95%	85.8%	68.2%	77.1%
Seal Beach	184	0	0	0	184	1,914	2,216	86%	99.8%	69.1%	73.7%
Serrano	27	0	0	125	152	1,835	1,860	99%	17.6%	63.1%	4.2%
Tustin	348	0	0	272	619	6,622	7,210	92%	56.2%	51.0%	56.7%
Westminster	657	0	0	0	657	6,629	7,176	92%	100.0%	96.7%	100.0%
Yorba Linda	<u>1,009</u>	<u>0</u>	<u>0</u>	<u>19</u>	<u>1,028</u>	<u>11,595</u>	<u>13,128</u>	<u>88%</u>	<u>98.2%</u>	<u>83.9%</u>	<u>13.8%</u>
SUBTOTAL:	16,565	0	1,418	5,167	23,149	239,210	259,052	92%	76.6%	70.2%	68.0%
Other Producers (Est ~3% of Subtotal)	<u>378</u>	<u>0</u>	<u>0</u>	<u>7</u>	<u>385</u>	<u>3,673</u>	<u>4,523</u>	<u>81%</u>			
TOTAL:	16,943	0	1,418	5,174	23,534	242,884	263,574		76.6%	70.2%	68.0%
OCWD (Talbert Barrier)	0		1,262	0	1,262	14,545	16,650				
OCSA (GAP)	na		97	na	97	736	394				

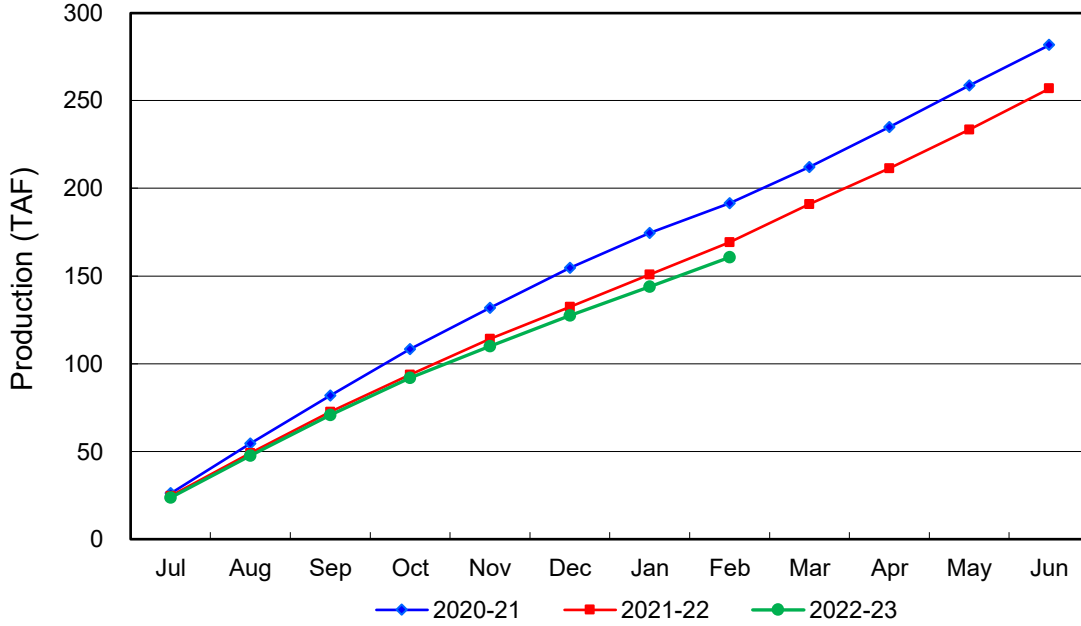
Estimated

(1) Excludes MWD CUP Withdrawals

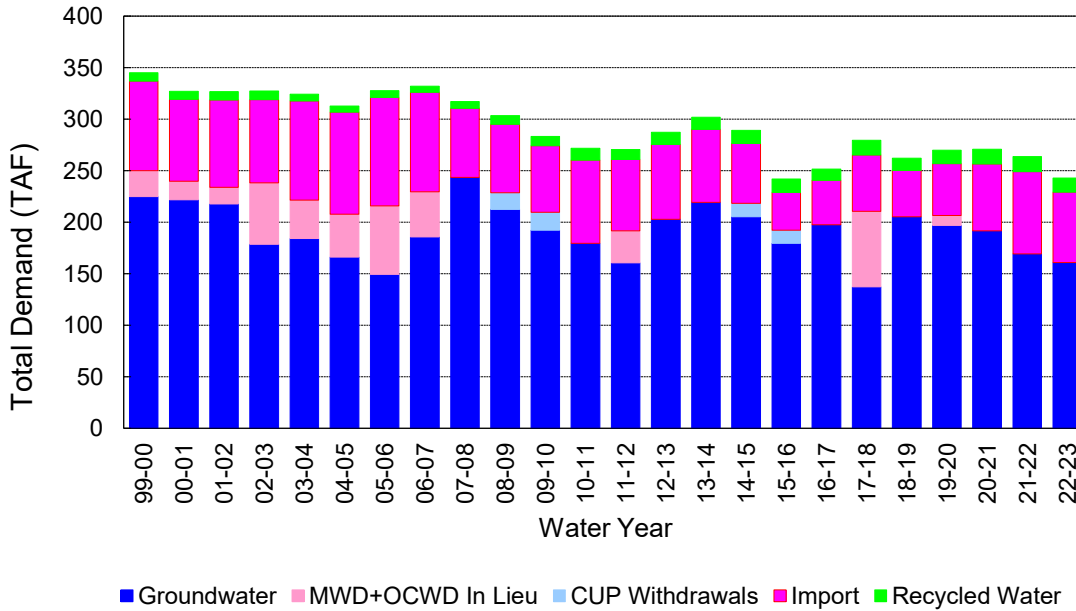
(2) Includes MWD CUP Withdrawals & In Lieu Water

3/9/2023 15:48

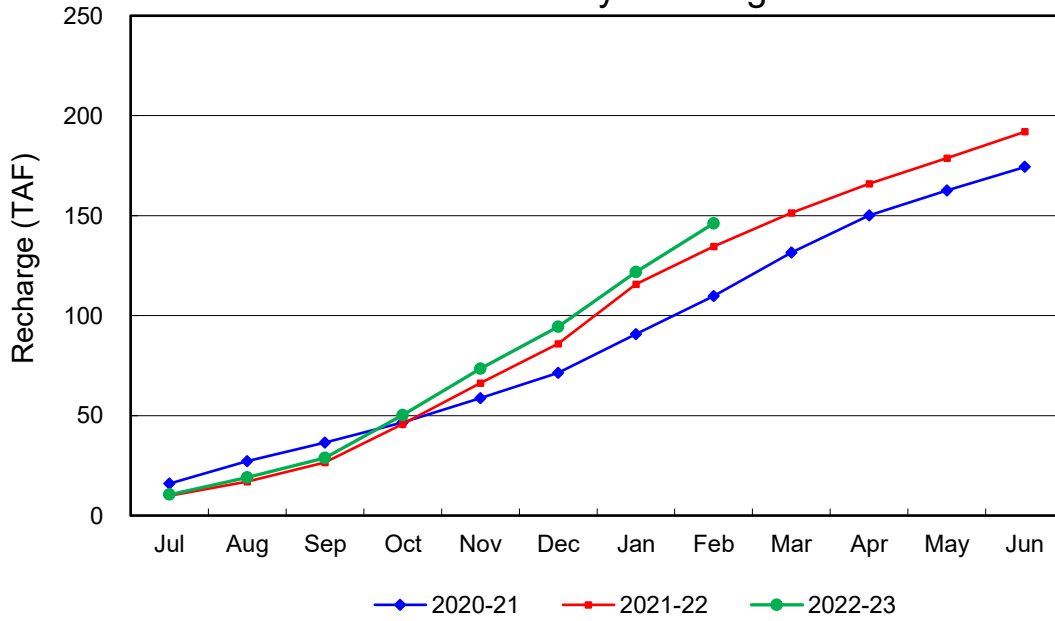
Annual Groundwater Production



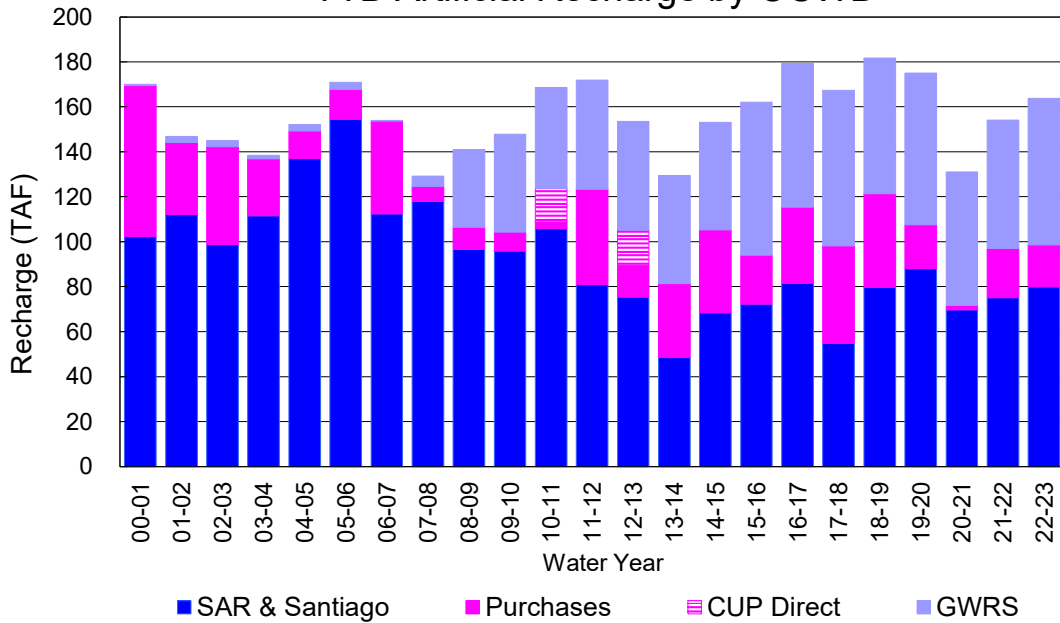
YTD Total Demand in OCWD



Annual Forebay Recharge



YTD Artificial Recharge by OCWD



RECHARGE AREAS REPORT

February 2023

	Percolation (AF)	Remarks
RIVER SYSTEM	5,170	93 cfs per day average perc
DESILTING SYSTEM	na	SAR
OFF-RIVER SYSTEM	67	SAR
WARNER SYSTEM	286	SAR
OLIVE BASIN	na	Passive System
ANAHEIM LAKE	2,189	SAR
MINI-ANA LAKE	0	
MILLER BASIN	1,639	GWRS
KRAEMER BASIN	3,313	GWRS, SAR
LA PALMA BASIN	2,506	GWRS
MIRA LOMA	206	GWRS
LA JOLLA BASIN	182	SAR
PLACENTIA BASIN	na	
RAYMOND BASIN	na	
FIVE COVES BASIN	na	SAR
BURRIS BASIN	1,693	SAR
RIVER VIEW BASIN	75	Burriss Pumped
FLETCHER BASIN	100	Burriss Pumped, local
SANTIAGO BASINS	6,656	Burriss Pumped, local
SANTIAGO CREEK	226	Burriss Pumped, local
TOTALS	24,308	
5-YR AVERAGE	22,177	

FLOWS TO RECHARGE AREAS (AF)	
Imperial Headgates (estimated)	24,925
GWRS	7,048
OC-28 (MWD)	0
OC-28a (MWD)	0
OC-59	0
Est'd local Forebay inflow below Imperial	1,690
Est'd local Santiago inflow (estimated)	1,380
Irvine lake releases (OC-13 MWD)	150
Villa Park Dam releases (estimated)	0
Precip at Warner Basin (inches)	4.29
Precip direct to open water surfaces	351
TOTAL INFLOW	35,544

LOSSES FROM RECHARGE AREAS (AF)	
Est'd SAR flow past Chapman Ave.	10,000
Est'd Santiago Cr. flow to SAR	465
Est'd flows past Raymond Basin	0
Calc'd evap (inches) Estimated	3.01
Est'd evaporative losses	246
TOTAL LOSSES	10,711

STORAGE CHANGES (AF)			
Facility	Begin	End	Net
Deep basins	9,658	9,705	47
Santiago Pits	13,129	13,606	477
River			
Off-river			
Irvine Lake			
TOTAL	22,787	23,311	524

SUMMARY (AF)	
TOTAL INFLOW	35,544
TOTAL LOSSES	10,711
STORAGE CHANGE	524
CALC'D PERCOLATION	24,308

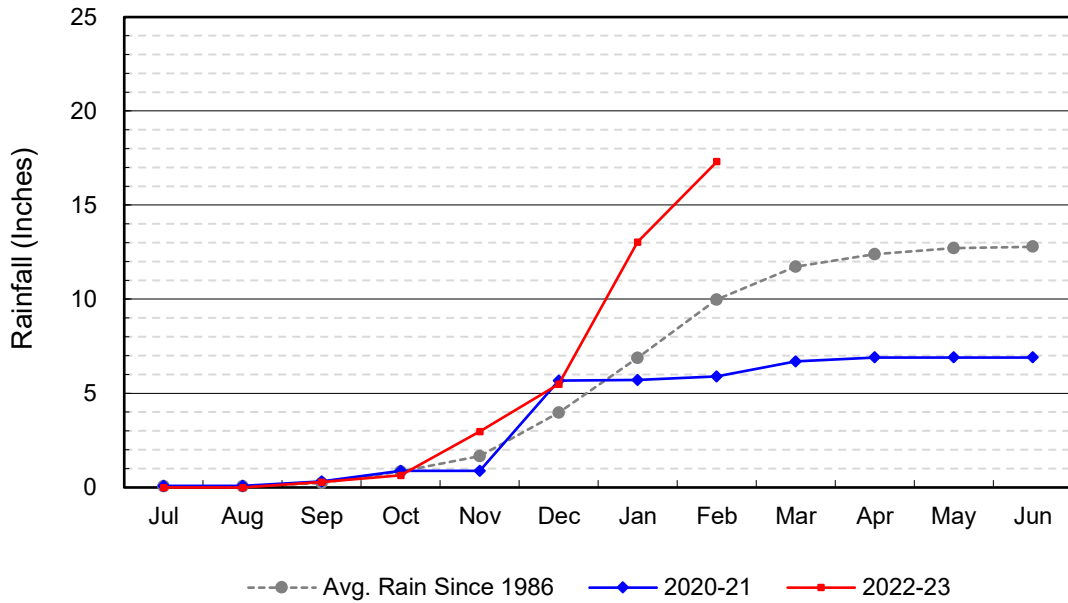
DEEP BASINS MONTHLY STATUS

February 2023

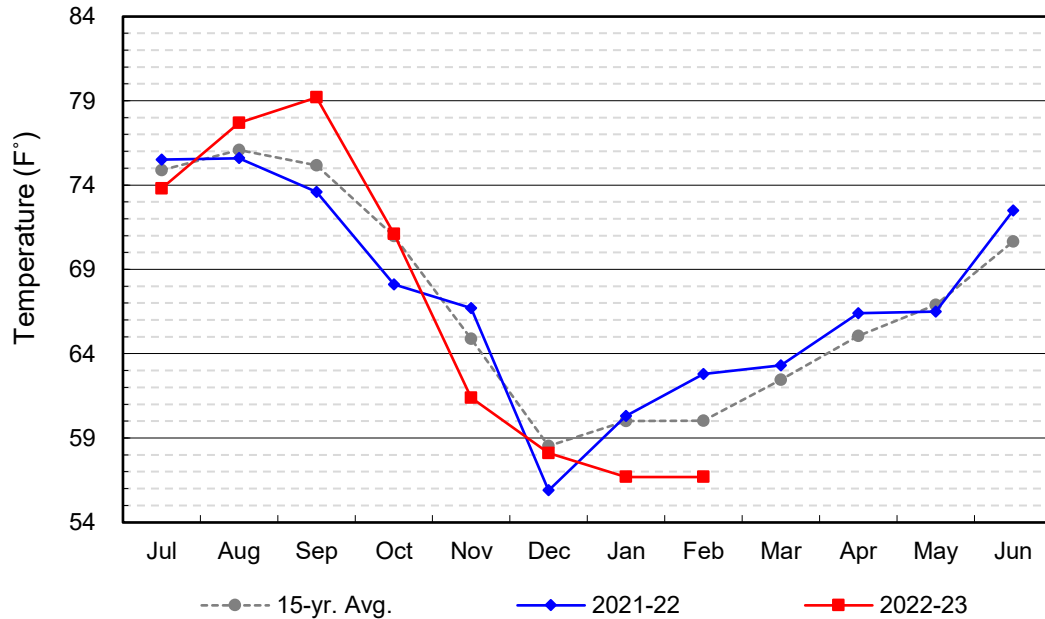
(values in acre-feet)

<i>Facility</i>	<i>Storage Start</i>	<i>Storage End</i>	<i>Maximum Storage</i>	<i>Total Perc</i>	<i>Max Perc</i>	<i>Avg Perc</i>	<i>Avg W.S. Elev</i>
Desilting Ponds	230	230	252	na	na	na	na
Fos-Huckleberry	553	533	628	na	na	na	na
Conrock Basin	590	555	661	na	na	na	na
Warner Basins	2,870	2,892	2,900	286	na	na	238
Olive Pit	81	76	95	na	na	na	219
Anaheim Lake	1,580	1,835	2,300	2,189	106	78	216
Mini-Anaheim Lk	0	0	10	0	0	0	220
Miller Basin	201	29	350	1,639	81	59	211
Kraemer Basin	995	1,007	1,055	3,313	141	118	215
La Palma Basin	94	90	101	2,506	110	90	219
Mira Loma	30	0	53	206	21	7	214
La Jolla Basin	11	0	20	182	14	7	202
Placentia Basin	0	0	200	na	na	na	na
Raymond Basin	0	0	200	na	na	na	na
Five Coves Basins	311	296	329	na	na	na	na
Burris Pit	2,101	2,146	2,500	1,693	81	60	169
River View Basin	8	0	8	75	5	3	189
Fletcher Basin	3	16	15	100	6	4	190
Santiago (Bond)	8,105	8,324	8,312	6,656	263	238	285
Santiago (Blu Dia)	5,024	5,282	5,259	-	-	-	-
Totals	22,787	23,311	25,247	18,845			
Prado Dam	14,709	20,261	20,000				

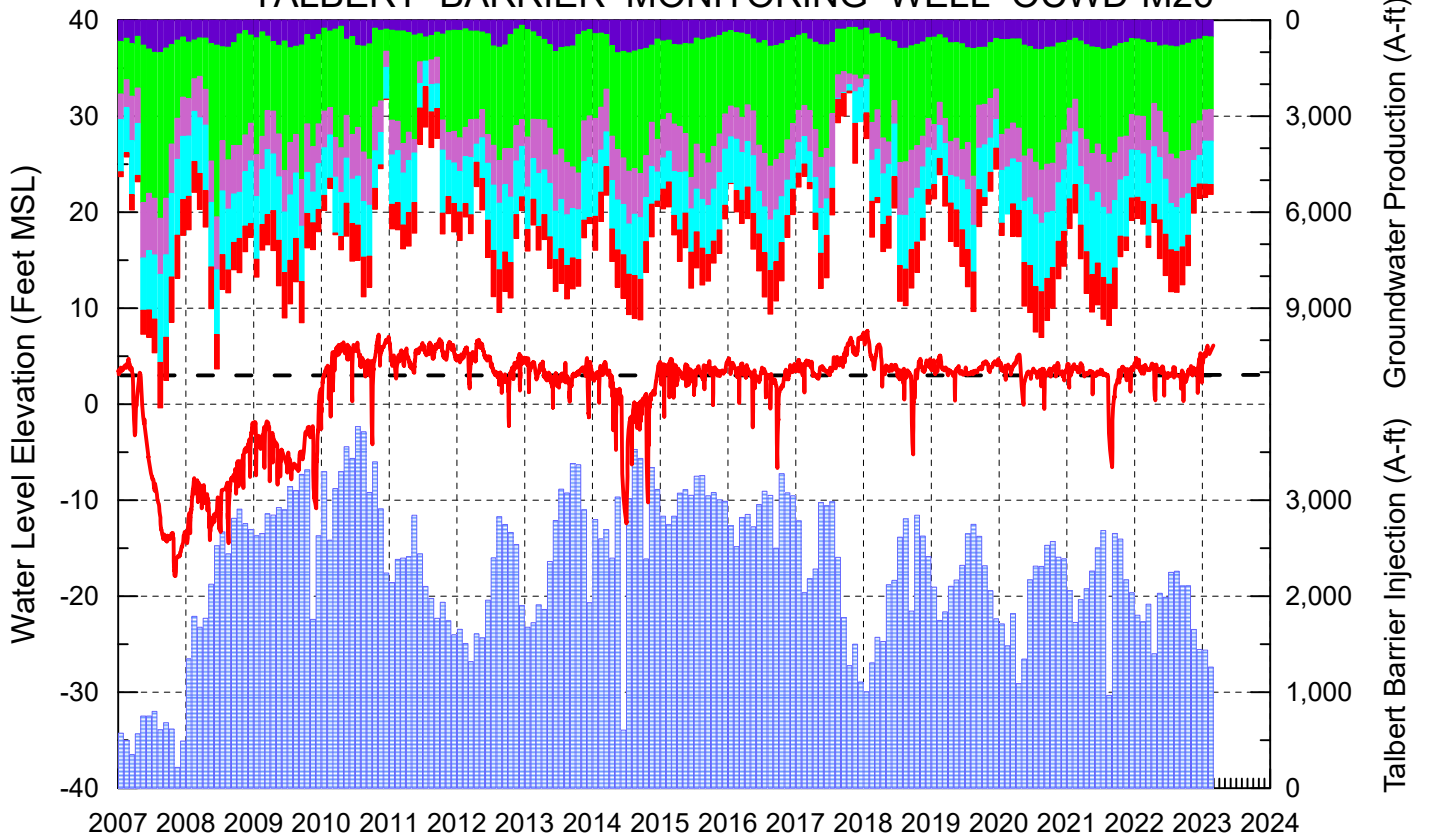
Cumulative Anaheim Field HQ Rainfall



Temperature at Santa Ana Fire Station



TALBERT BARRIER MONITORING WELL OCWD-M26



- Talbert/Lambda Aquifer Mergence Zone
Perforated Interval: 71 - 135 ft. bgs
- ▨ Talbert Barrier Injection
- - - Protective Level to Prevent Seawater Intrusion
- ▨ Fountain Valley Groundwater Production
- ▨ IRWD Groundwater Production
- ▨ Mesa Water Groundwater Production
- ▨ Huntington Beach Groundwater Production
- ▨ Newport Beach Groundwater Production

